

Building the System of National Accounts - measuring quarterly GDP

Statistics Explained

This article is part of a [set of background articles](#) explaining in some detail how statistics producers, such as national or international statistical institutes, may build a coherent [system of national accounts \(SNA\)](#), especially in developing countries. The articles are based on the official Eurostat handbook [Essential SNA - Building the basics](#) and they focus particularly on the early stages of the implementation.

The 2008 SNA implementation represents a complex process with several phases. One of the milestones of the 2008 SNA implementation's six phases calls for the compilation of quarterly national accounts. In addition, the recent economic and political context has brought about an increase in the demand for accurate indicators that provide timely, comprehensive information about the evolution of the economy on a short-term basis. Users obtain this information from quarterly national accounts. In keeping with the objective of the handbook, the present chapter describes the main methodological aspects of quarterly national accounts implementation and development, focusing on quarterly [GDP \(QGDP\)](#). The data sources and methods used for its compilation each quarter, based on two approaches (production and expenditure), are presented, along with numerical examples of estimation procedures. This handbook omits the income approach to calculating quarterly GDP due to a widespread lack of availability of data sources.

What are quarterly national accounts and why do we need them?

General scope

[Quarterly national accounts \(QNA\)](#) serve two main purposes; namely, to provide information about the evolution of the economy in a more timely manner than annual data, and more comprehensively than individual short-term indicators. Timely, coherent, accurate, comprehensive and reasonably detailed quarterly national accounts serve as a framework for assessing, analysing and monitoring current economic developments.

‘In looking for momentum, quarter-on-quarter real GDP growth rates are more important. The year-on-year rates can be inadequate in identifying the current trend in economic activity, as they could indicate, for example, that an economy is still in recession when it has actually been recovering for some time. In other words, a year-long span is too broad and insensitive to quarterly (or monthly) growth reversals: e.g. a yearly growth can be negative due to the fact that the current observation is below its counterpart one year ago, but monthly or quarterly trend movements may have been in growth for many months or quarters. In sum, year-to-year rates of change are not suitable for business cycle analysis, and analysing the economy on the basis of these rates of change can have an adverse impact on the soundness of macroeconomic policy.’

Figure 1: Role of QGDP - Source: Paper 'A Background Note on Uses of National Accounts Estimates at ADB' - OECD/ADB/ESCAP Workshop on Quarterly National Accounts, 17-21 June 2002, Bangkok

Compilation of quarterly national accounts is based on the 2008 SNA and other manuals devoted to this task. The 2008 SNA contains no chapter specifically addressing quarterly national accounts issues, but the same principles, classifications, definitions and overall coverage as for annual national accounts apply. [The European System of Accounts \(ESA 2010\)](#) includes a chapter dedicated to this issue.

There are two important requirements for quarterly national accounts. Quarterly national accounts must be: available as soon as possible after the end of the reference period; and as accurate as is feasible to require as little subsequent revision as possible.

A conflict between the two requirements thus arises, as more timely quarterly estimates may require greater subsequent revision. A balance between [timeliness](#) and accuracy must therefore be struck, depending on the interests of users of the national accounts data in each country.

The main characteristics of quarterly national accounts are the following.

1. Their purpose is to present the short-term movements of the economy, providing a coherent measure of such movements within the methodological framework of national accounts. In contrast with annual estimates, quarterly data focuses on growth rates and their temporal characteristics such as acceleration, deceleration or changes in sign.
2. In quarterly accounts, the same standard classification as in annual accounts applies, albeit at a higher level of aggregation. This is because the purpose of quarterly accounts is to give an overall picture of the short-term macroeconomic situation and evolution, rather than to provide the structural details about the economy, which is the domain of annual accounts.
3. Due to variations in the intensity of economic activity throughout the year, quarterly indicators are compiled in raw (non-seasonally adjusted) and in seasonally adjusted forms.
4. Quarterly national accounts have to be reconciled to annual accounts values (i.e. annual estimates and the sum of the four quarterly estimates should be equal).
5. Quarterly national accounts revisions are more substantial and occur more frequently than for annual accounts because of the characteristics of data sources and compilation methods.

Countries all around the world are interested in setting up a system of quarterly national accounts, or in improving their existing systems, to take advantage of the benefits of having such a system in place. These benefits include the following. Quarterly national accounts:

1. Provide a timelier picture of the economy in a coherent accounting framework, and offer a means of detecting the phase of the economic cycle, highlighting peaks and troughs. Business cycle fluctuations are successfully captured by quarterly national accounts because the average period of the cycle generally coincides with quarters.

2. Incorporate into a common framework the available short-term indicators—which are often incomplete and cover only a specific aspect or sector of economic activity—using a range of classifications, and disseminate these indicators in various ways.
3. Supply a pool of useful information for monitoring the economy and suggesting directions for policies concerning the main short-term target variables. Monitoring the short-term movements of major economic flows is possible based on quarterly national accounts data, using indicators such as the output, GDP, private consumption, government consumption, gross fixed capital formation, change in stocks, exports, imports, wages, profits, taxes, and lending and borrowing of the main institutional sectors, with an emphasis on the government sector. Quarterly national accounts record the flows of goods and services at both current and constant prices, which provides insight into the growth dimension of the flows.
4. Support on-going economic policy decisions, which require prompt information about the economy over the short term.
5. Offer information for other purposes such as econometric modelling, including structural econometric models and multivariate [time series models](#) . These models represent a tool for economic policymaking and business cycle evaluation, and an instrument for structural economic analysis and forecasting.
6. Offer the framework for further improvements to the entire statistical system. Quarterly national accounts provide a coordinated conceptual framework for designing surveys and collecting economic and social statistical data, as well as a framework for identifying major gaps in the range of available short-term statistics.

Coverage

Quarterly national accounts adopt the same principles, definitions and structure of annual national accounts, and cover, in principle, the entire sequence of accounts and corresponding aggregates, as well as the supply-and-use framework based on the methodology of the 2008 SNA.

The progress of the 2008 SNA implementation in each country is evaluated at the international level against the Standard Minimum Requirement Data Set (MRDS) and the milestones set out by the United Nations.

The section entitled *The SNA implementation strategy* , in the article [Building the System of National Accounts - strategy](#) presents the scope and content of MRDS for annual accounts.

The set of data required to meet the criteria for SNA implementation in the field of quarterly national accounts is presented in Figure 2.

NAQ Table Number	Indicators	Quarterly accounts
	<i>GDP, value added and employment</i>	
	Nominal and volume measure of GDP by industry or by expenditure components	<i>Minimum requirement</i>
1.1	GDP expenditure at current prices	<i>Optional minimum requirement</i>
1.2	GDP expenditure at constant prices	<i>Optional minimum requirement</i>
2.1	Value added and GDP in current prices by industry	<i>Optional minimum requirement</i>
2.2	Value added and GDP in constant prices by industry	<i>Optional minimum requirement</i>
2.3	Value-added components by industry, current prices	<i>Recommended</i>
	Employment by industry	<i>Recommended</i>
	Integrated accounts and tables, including integrated satellite accounts	
1.3/4.1	Accounts for the total economy (until net lending)	<i>Minimum requirement</i>
	Supply and use table	<i>Desirable</i>
	Institutional sector accounts (until net lending)	
4.2	Rest-of-the-world accounts (until net lending)	<i>Minimum requirement</i>
4.3	Non-financial corporations sector accounts	<i>Recommended</i>
4.4	Financial corporations accounts (until net lending)	<i>Recommended</i>
4.5	General government sector accounts (until net lending)	<i>Recommended</i>
4.6	Household sector accounts (until net lending)	<i>Recommended</i>
4.7	Non-profit institutions serving households sector accounts (until net lending)	<i>Recommended</i>
	Financial accounts	
4.1-4.7	Financial accounts for all sectors	<i>Desirable</i>
	Balance sheets and other changes in asset accounts	
	Balance sheets, revaluation and other volume changes in asset accounts for all sectors	<i>Desirable</i>

Figure 2: Scope of implementation of 2008 SNA related to quarterly national accounts Note: Minimum requirement: adequate implementation of the 2008 SNA, where relevant. Recommended: recommended for compilation by all countries. Desirable: Useful statistics that should be compiled, if possible. Tables shown without a number are not included in the annual United Nations Questionnaire (NAQ). For the institutional sector accounts, the household accounts and the non-profit institutions serving households may be presented together. Source: Report of the Inter Secretariat Working Group on National Accounts (ISWGNA) to the forty-second session (2011) of the United Nations Statistical Commission

In practice, not all the requested data are compiled; the availability of data sources, the coverage of annual accounts, and the lack of human resources reduces the scope and the coverage for quarterly national accounts. Many countries therefore only provide the main aggregate and the GDP, along with some details from the production and expenditures approaches.

The section 2, *Accounts and main aggregates*, in the article [Building the system of National Accounts - basic concepts](#) presents the three approaches of annual GDP compilation.

Some conceptual issues

Some compilation considerations are particularly important for quarterly estimates; namely, the point at which transactions are recorded, their consistency and the meaningfulness of the estimates.

1. Time of recording

The 2008 SNA defines the [time of recording](#) of flows in national accounts and the systems used to do so. Examples of such systems are:

1. cash accounting system: transactions are recorded when 'cash' (the payment) is received or tendered;
2. full accrual accounting system: transactions are recorded when the underlying economic events occur, regardless of the timing of the related payments;
3. due for payment: transactions are recorded when a commitment—a liability to make a payment—occurs (e.g. pension liabilities in the public sector, tax payment).

More information concerning the recording of the transactions in national accounts is presented in Chapter 3: Basic concepts, Section 1.4.2: Time of recording.

The choice of system may affect results, especially when the recording period is shorter than one year, as is the case with quarterly accounts. To obtain a record of flows on an accrual basis, as required by the 2008

SNA, some data adjustments are necessary. The process starts with an in-depth analysis of the sources, to gain an understanding of the recording time of the transactions, and continues with adjustments for the current period. For example, if VAT declarations are used for the output estimation, adjustments should be made, taking into account that quarterly data from tax authorities do not refer to the production of the quarter; instead, this data usually has a one-month lag. This means that the value of turnover declared for VAT purposes in April represents the results of the activity carried out in March, thereby requiring adjustments to the data.

2. Consistency in recording and work-in-progress

The main issues, especially for quarterly accounts, are to ensure consistency in the records for:

1. Production of goods or services produced over lengthy periods. Unfinished production from one quarter is recorded as inventory of a work-in-progress so as to ensure consistency with the compensation earned by the employees for this production.
2. Services produced over lengthy periods. At present, there is growing evidence of producers with activity in the business and financial services industries producing services over lengthy periods. In this respect, quarterly business surveys need to capture incomplete service production, such as inventories of work-in-progress at the end of each quarter, as these surveys would for goods.
3. Data for the variables that appear in the accounts by different institutional sectors, and within or between components of the three GDP approaches.

3. The meaningfulness of the quarterly data

In the compilation process of quarterly GDP, a specific issue that needs addressing is meaningful estimation using data from production, expenditure and, possibly, incomes. Some examples of problems that may arise are the following:

1. interest payments may occur twice a year or annually;
2. payments of taxes on operating surplus may be concentrated in one or two quarters of the year;
3. taxes on land and buildings, which may be seen as an annual tax, may be paid irregularly over the course of the year.

Solutions to these problems should be based on the analysis of the phenomena and annual data. For example, to determine the quarterly profile of non-seasonally adjusted data for taxes on operating surplus, an appropriate tax rate from the annual estimates should be applied to the corresponding series of the operating surplus.

Data sources and methods used for QGDP compilation

Data sources

The link between available data sources and methods used for GDP compilation is obvious. Ideally, the three GDP approaches should also be applied for compiling quarterly data, starting from the very preliminary phase of compilation. In reality, however, very few data sources are timely enough for this purpose. In these circumstances, it is necessary to make maximum use of available sources, and establish suitable methods to compile quarterly GDP. In general, none of the three approaches is more reliable than any other because the quality of the sources and the institutional context have an important impact on the accuracy of the estimates. In many countries, the estimates of QGDP by the production approach are considered to have the highest reliability, although good estimates from the income side are only available in a few countries. One of the compilation process steps involves determining the most reliable sources, the appropriate approach or approaches for the estimates based on available sources and, ultimately, the optimal method for reliable QGDP compilation.

1. Relationship to the sources and methods used in the annual estimates
 - Are the same sources available quarterly?
 - Are other sources/indicators available quarterly?
 - Are several alternative sources/indicators available for the same item?
2. Compilation level
 - As detailed as possible?
 - At the level of the main aggregates?
3. Coverage
 - What parts of the annual national accounts can be covered?
4. Assessment of sources and methods
 - Accuracy in predicting annual changes
 - Systematic bias or noise
 - Individual and aggregated tracking exercises
 - Definitions of source data
 - Coverage
 - Units
 - Classifications
 - Reliability (revision of indicators)
 - Systematic bias
 - Noise implied by irregular changes
 - Timeliness
 - Reliability of preliminary estimates
 - Amount of gap filling and guess estimation
5. Do the annual sources and methods need to be changed?

Figure 3: Assessment of indicators and compilation methods - Source: Quarterly National Accounts Manual- Concepts, Data Sources, and Compilation, By Adriaan M. Bloem, Robert J. Dippelsman, and Nils Ø. Mæhle, IMF, 2001

In very few cases, a data source is available in a form that enables its direct use for QGDP estimation with little or no adjustment. In most cases, the indicators offered by the existing data sources differ from user needs in some way, and so require adjustments. These adjustments may typically be established for one or a small number of main benchmark years for which additional sources, such as the results of more comprehensive and detailed surveys or censuses, may be available. In these cases, the annual and quarterly time series are anchored to these main benchmark years and the regular source data are used as indicators to update the benchmark estimates. As the annual estimates provide the benchmarks for quarterly indicators, they should be the starting point in selecting and developing quarterly data sources.

Statistical and administrative data sources used for QGDP compilation differ from one country to another, due to:

1. the capacity of the statistical system to provide short-term indicators that cover the main economic activities;
2. the availability of administrative data, their coverage and the access of national accountants to this data;
3. the structure and size of the economy.

Chapter 5 *Statistical sources* and Chapter 6: *Administrative Sources* present information about data sources used for annual GDP compilation.

The **statistical data sources** cover a variety of economic fields that should be integrated into the QGDP compilation process. At the international level, however, it is necessary to harmonise the basic statistics in order to facilitate theoretical and practical comparability. Thus, the greater the degree of harmonisation in classifications, prices, and so forth in different countries' statistical systems, the more comparable the corresponding national accounts statistics (both annual and quarterly) between nations will be.

For QGDP compilation, the most important statistical sources available within the national statistical system are the following (they are part of the 'ideal' data set).

1. Short term business surveys, which provide:
 - (a) appropriate general information on: sales/turnover; purchases from market, **GFCF** by principal assets type, inventories by types, foreign trade in services, compensation of employees and employment;

- (b) specific information on: monthly index of production and the monthly (or quarterly) index of retail sales, quantity indicators for hotels and restaurants (overnight stays), transport (tonne km, passenger km), etc.
- 2. [Household budget survey \(HBS\)](#) , offering information on household income and expenditures on goods and services. In order to be used for quarterly estimates, it is essential to have an appropriate sample, representative for the period of time, that is sufficiently large to ensure accurate estimates.
- 3. Price statistics, covering the [consumer price indices \(CPI\)](#) , [producer price indices \(PPI\)](#) for goods (including agriculture), producer price indices for services, export and import price indices and the construction cost index.
- 4. Foreign trade statistics providing data on imports and exports of goods and services.

The **administrative sources** generally used for QGDP compilation provided by public authorities or institutions are the following:

1. government expenditures and revenues, available on a monthly basis;
2. financial statements of financial and non-financial enterprises, which may be available quarterly or twice a year;
3. tax declarations, which provide information concerning the turnover and the value of VAT paid;
4. [balance of payments \(BoPs\)](#) , available monthly;
5. building permit issued (data taken from an identifiable public authority);
6. registration of vehicles (data taken from an identifiable public authority);
7. employment data (e.g. employment register, social security system, etc.).

In the absence of statistical or administrative data, **other sources** should be sought and used for the compilation of quarterly national accounts indicators. Data from industry associations, industry experts, or leading enterprises in a particular industry may help with the calculation of quarterly indicators. These can be grouped as follows:

1. data from research institutes, news agencies, etc. (e.g. opinion surveys and other qualitative data);
2. data from professional unions and industry bodies (e.g. information relating to doctors, dentists, lawyers and pharmacists);
3. quarterly company reports or special, tailored surveys of a few very large private and public corporations (e.g. utilities and transport usage).

One of the objectives of quarterly national accounts is to provide as much accurate data as possible following the annual methodology and data. For this reason, national accountants should ensure an adequate use of all available sources. It is crucial that they have a good understanding of the indicators these sources provide, their definitions and coverage, how the data are derived, their accuracy, and possible biases. Establishing the ways in which the data sources are used is an on-going exercise. Basic data need continuous monitoring because new issues may emerge at any time. In this respect, national accounts compilers should endeavour to develop a good working relationship with their data suppliers to get the best possible support from these agents and to avoid complications in the compilation process. The data sources should be assessed for accuracy, reliability and timeliness for several reasons:

1. to determine whether a specific data source is suitable for QGDP compilation;
2. where more than one data source is available for a particular indicator, the selection of one source should be based on coverage, content, etc.;
3. when data from different sources are in conflict, this assessment will lead to a choice on where to make adjustments;
4. to identify areas for data source improvement;
5. to allow national accountants to inform data users about the quality of the estimates and expected future revisions of the quarterly time series.

In practice, in many cases, there will be little or no choice about sources in the short term. Nonetheless, it is still necessary to assess the data sources and the indicators that may be used based on information from the data providers.

The most important criterion for the assessment of the accuracy of quarterly sources is the extent to which they are able to indicate annual movements. This follows the main requirement of keeping QGDP consistent with annual accounts. The accuracy of the short-term source statistics as indicators of the annual movements depends on definitions and specifications of the variables, and on issues such as coverage, units and classifications. The timeliness of the quarterly source data also has considerable implications for how early QGDP estimates can be disseminated. Usually, the first estimates are based on an incomplete set of data; for some indicators, only two months of the last quarter may be available, while data for other series may be missing completely. In this situation, provisional estimates of QGDP are made based on a simple trend extrapolation, or on alternative indicators that are more timely but less accurate.

It is important to underline that the assessment of the source data may also help identify areas for improvement, both for the quarterly and annual national accounts, with respect to coverage, definitions, units, sources, methods, and so on. In establishing priorities for improvements, the relative importance of an indicator is a key consideration. For many components, the basic data are so poor that refinement of methods would be of doubtful benefit.

The development of QNA methods, including QGDP compilation, also leads to improvements in annual accounts. The regular process of reviewing quarterly estimates brings to light outdated or unrealistic methods and assumptions used for annual accounts, and can contribute to a better compilation of annual data.

Methods for QGDP compilation

As stressed above, QGDP must be closely linked to annual estimates to ensure consistency between short-term and long-term movements. Through the quarterly figures, national accounts seek to provide accurate estimates of unknown future annual GDP. Thus, because in quarterly accounts the emphasis is on relative movements rather than absolute levels, the selection of indicators for quarterly estimates is based on how well these reflect changes in annual national accounts.

The strategy for establishing QGDP compilation and dissemination is based on several steps.

1. Consultation with the data users in order to identify their needs, the coverage and details of quarterly data, and the dissemination deadline.
2. Performing an inventory of data sources and methods in the statistical system, such as:
 - (a) analysis of available annual and quarterly data sources;
 - (b) assessment of annual compilation methods;
 - (c) identification of the possible links between quarterly and annual data sources and methods.
3. Assessment of indicators provided by quarterly data sources, concerning:
 - (a) definition (coverage, units, classifications);
 - (b) accuracy in indicating quarterly movements;
 - (c) revision of sub-annual indicators;
 - (d) timeliness (available within at least one month after the end of the quarter).
4. Designing compilation methods and procedures based on:
 - (a) availability of sources and relevance of indicators on a quarterly basis;
 - (b) relations between sources and methods used in annual and quarterly estimates;
 - (c) coverage of quarterly estimates, including which parts of the 2008 SNA will be implemented;
 - (d) the level of detail of the compilation (two or three digits of the product and industry classifications);
 - (e) selection of the integrated or separate annual and quarterly national accounts compilation system;
 - (f) the compilation schedule, including dissemination and revision policy.
5. Reviewing the quality of data sources and methods of compilation:

- (a) analysing the correlation between annual and quarterly data;
 - (b) analysing the revisions of quarterly national accounts aggregates, based on historical data;
 - (c) revisions to the quarterly compilation methods based on new data sources or improvements in annual accounts estimation methods.
6. Generating time series of QGDP data for past years ('back series') and benchmarking them to the time series of annual data. This should be done:
- (a) for a sufficiently long time series;
 - (b) at the most detailed compilation level.
7. Revision of quarterly national accounts in line with annual results so as to keep data up to date and include new or improved information when available.
8. Compilation of the current quarterly GDP based on available data sources by:
- (a) linking monthly and quarterly source data for the current quarters with estimates for the back series;
 - (b) extrapolating with indicators;
 - (c) benchmarking the time series of quarterly source data to the time series of annual data;
 - (d) filling the information gaps.
9. Dissemination of the results: first release and revised data.

An important step of the implementation strategy is to decide on the compilation method (Step 4). The QGDP compilation system may be separate from the annual accounts compilation system or integrated into it. Separate systems are commonly found in countries with a comprehensive, detailed annual system that includes annual SUTs, which involve a cross-sectional reconciliation of national accounts indicators. Integrated annual and quarterly accounts compilation systems are typically found in countries not using the SUTs framework for their annual data, which makes it easier to use the same system for annual accounts and QGDP. In an integrated system, the data storage and calculation functions for both annual and quarterly data are carried out within the same processing system, although the level of detail differs (i.e. more details for annual accounts). In this situation, QGDP sources and compilation methods may be benchmarked to annual sources and methods.

The choice of the compilation method depends on the conditions in each country and the specifics of annual and quarterly national accounts, bearing in mind that:

1. annual data are subject to a detailed reconciliation process that cannot be applied each quarter;
2. quarterly data have a time series dimension; the annual system follows a year-by-year calculation method.

Another important aspect that should be taken into consideration when the methods of product and industry for quarterly national accounts compilation are defined is the recommendation to compile them simultaneously in current and constant prices, and at the most detailed level possible. For this procedure, three options exist:

1. to obtain the value at constant prices, and then to inflate the result to obtain the value at current prices;
2. to obtain the value at current prices, and then to deflate the result to obtain the value at constant prices;
3. to produce independent estimates of the indicators in current and constant prices.

Ideally, the quarterly data sources and the methods should be the same as for annual accounts. In reality, however, this is usually unfeasible. Therefore, simpler methods that differ from those for annual NA compilation are developed to produce QGDP. In general, there are two main **approaches** for QGDP compilation:

1. the direct approach, which is based on the assumption that the basic quarterly data and the corresponding data from the annual accounts are quite consistent, at least in terms of growth rates;
2. the indirect approach, which employs statistical techniques to quantify the relationship between a time series of annual data (from the annual accounts) and the available quarterly indicators in order to generate quarterly estimates of the national accounts variables.

As the methods used for the estimation of national accounts are determined by the availability of data, the recommended approach for the compilation of quarterly national accounts aggregates is based on the best use of the existing data sources. This may be described as a 'pragmatic' approach. The vast majority of countries use a combination of direct and indirect methods, depending on the availability of source data. For example, when no quarterly indicator is available, national accountants fill gaps in the QNA by looking at the available alternatives to ensure comprehensive estimates of the national accounts aggregates. After choosing a suitable alternative, compilers can use historical patterns in the annual data for the chosen variable as a guide. If a series is volatile and relates to the economic cycle, growth rates of the rest of the economy may be a suitable indicator. Extrapolation on the basis of past trends is generally undesirable, as this approach tends to mask current trends. In the absence of a suitable indicator, a simple, transparent method may be more appropriate than one that is time-consuming and complicated without necessarily providing clear benefits.

Figure 4 shows a schematic representation of the main approaches to estimate QGDP based on the available data sources. The figure depicts the thought process that national accountants should follow to find the most appropriate method for estimating national accounts variables.

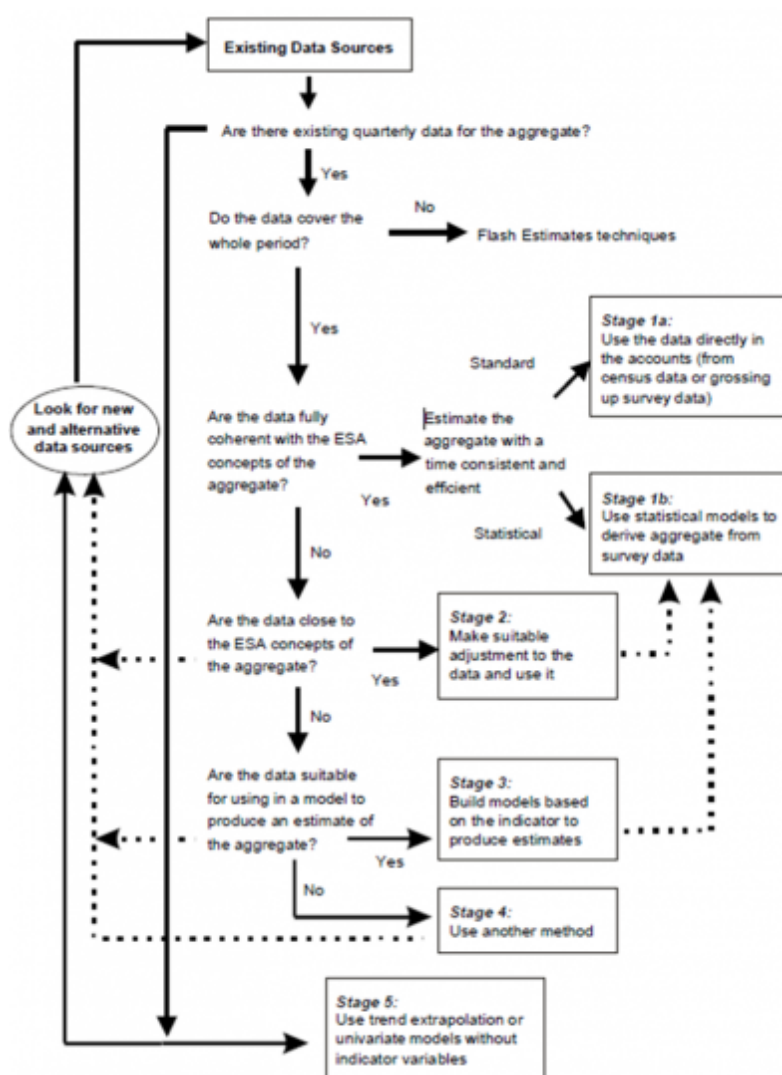


Figure 4: Use of information in the estimation of a single aggregate - Source: Handbook on quarterly national accounts, Eurostat, European Commission, 2013

Stages 1 to 5 apply when working with some available data that are conceptually related to the QGDP variable.

Stage 1: The basic data are used directly with no amendments required for measurement or for coverage of indicators, although some classification changes for the level of disaggregation of indicators may be admis-

sible. This is most commonly the case when the quarterly data sources meet the national accounts requirements.

Stage 2: If the data fails to meet the SNA requirements, some adjustments are necessary, such as conversion from cash to accruals or adjustments, or amendments regarding the coverage. These techniques are not mathematical nor use a statistical model, but instead are based on the basic data being close to the definition given by the 2008 SNA. The adjustments are relatively small and have a methodological foundation.

Stage 3: Data from sources fail to meet national accounts requirements, but serve a purpose as indicators in a statistical model to estimate the QGDP variables.

Stage 4: Applying some other (non-mathematical and non-statistical) approach, often qualitative, to estimate the path of the QGDP variable using knowledge of the series and of the principal influences upon its level and growth.

Stage 5: In some instances, data sources for quarterly estimates are unavailable, and the only information comes from annual national accounts. In this case, quarterly estimates are derived either by a weighted disaggregation of the available annual data according to some purely mathematical criterion or by using time series models. These methods are not recommended—they are a last resort—and national accountants should do their utmost to obtain and use quarterly sources for the estimates.

The general objective of quarterly national accounts implementation is to be able to apply an estimation method that fits into the first or second stage of the process. Movements among stages depend on availability, quality and timeliness of data sources, the degree of adherence to the 2008 SNA methodological requirements, and the philosophy upon which a country bases its accounts compilation.

The basic national accounts relationships between supply, use and income categories are supposed to hold at the quarterly level, too. Nevertheless, the QGDP is often compiled using an indirect approach at a much higher aggregate level than the annual estimates. This approach may generate divergent results for related values of the aggregate, and, for this reason, it is advisable to check the consistency for the following metrics at least: value added in construction versus gross fixed capital formation (GFCF), investment versus imports of capital goods, production of general government versus final consumption of government, value added of the retail trade versus VAT in volume, and the QGDP deflator versus household consumption deflator.

Benchmarking

Quarterly national accounts estimates, including QGDP, should be consistent with annual national accounts data estimates, where the annual data provide the benchmarks. This consistency is obtained by a separate process of so-called 'benchmarking'. Generally, the annual indicators provide the most reliable information at the overall level and long-term movements in the series, while the quarterly estimates provide information about the short-term movements in the series. Benchmarking issues also arise in annual data (e.g. for the estimation of SUTs when a special survey is only conducted every few years).

The benchmarking process is seen as a way of improving the quality of the quarterly data and of the accounts overall, through what might be termed 'retrospective' alignment. In other words, a set of quarterly accounts has been established at a given moment in the past, with these estimates being consistent with the corresponding annual set of figures at the time of compilation. When the annual figures are improved by integrating more information from data sources that become available later, the quarterly accounts have to be aligned with the new annual data.

Discrepancies between quarterly and annual estimates should be corrected in order to ensure consistency. Such discrepancies are removed by benchmarking the quarterly data against the annual estimates, which, due to the accuracy of data sources and methodology, provide more reliable data. As a result, the time series of quarterly and annual data for the same phenomenon are consistent, while accuracy and quality of the quarterly estimates improve (so they may form the basis for forecasts of annual data).

The benchmarking procedure must simultaneously:

1. preserve, as much as possible, the short-term movements in the quarterly data source under the restrictions provided by the annual data;
2. ensure, for the forward series, that the sum of the four quarters of the current year is as close as possible to the unknown real future annual data.

It is important to preserve the short-term movements in the source data because the short-term movements in the series are the QNA's key contribution, with the indicator providing the only available explicit information on these movements.

Benchmarking has two main uses for quarterly estimates:

1. quarterisation of annual data to construct time series of historical QGDP estimates ('back series') and revise preliminary QGDP estimates to align them with new annual data when they become available;
2. extrapolation to update the series from movements in the indicator for the most current period ('forward series').

To understand the relationship between the corresponding annual and quarterly data, it is useful to analyse the ratio between the annual benchmark and the sum of the four quarters of the indicator (referred to as the annual benchmarking indicator ratio), which highlights any inconsistencies between the long-term movements of the indicator in the annual and quarterly data. These inconsistencies can help identify areas for improvement in the annual and quarterly data sources. The standard, basic method for benchmarking, at least for most variables, is the uniform proportional adjustment (i.e. taking the difference and allocating it proportionally over the four quarters), a method that may sometimes be unsuitable. For this reason, various other approaches may be more appropriate for benchmarking.

1. *Manual approach*

The simplest approach is to adjust the quarterly data manually; that is, 'by eye'. This procedure involves combining direct knowledge of the series with an ability to smooth the series manually. This may be appropriate when the differences between the annual and quarterly data are small, and when few series require adjusting.

2. *Ratio approach*

The pro rata distribution refers to the allocation of an annual total of a flow series to its four quarters. A pro rata distribution splits the annual total according to the proportions indicated by the four quarterly observations. Below, two algebraically equivalent equations, presented differently, are shown:

1. Distribution presentation:

$$X_{q,\beta} = A_{\beta} \cdot \left(\frac{I_{q,\beta}}{\sum_q I_{q,\beta}} \right)$$

2. Benchmark-to-indicator (B-I) presentation:

$$X_{q,\beta} = I_{q,\beta} \cdot \left(\frac{A_{\beta}}{\sum_q I_{q,\beta}} \right)$$

Where, in both cases:

$$X_{q,\beta}$$

is the level of the QNA estimate for quarter q of year β ;

$$I_{q,\beta}$$

is the level of the indicator in quarter q of year β ; and

$$A_{\beta}$$

is the level of the annual national accounts estimate for year β .

Extrapolation with an indicator is another ratio approach. For the quarters of the current year or even the most recent year, independent estimates of annual data may be unavailable. QNA estimates for these periods should be consistent with the QNA estimates for previous periods that are benchmarked against the annual data. Movements in the quarterly indicator are used to extrapolate or update the QNA estimates (i.e. benchmarked to the annual data) to derive the QNA estimates for quarters with no annual accounts values.

1. Extrapolation presentation, moving from last quarter of the last benchmark year:

$$X_{4,\beta+1} = X_{4,\beta} \cdot \left(\frac{I_{4,\beta+1}}{I_{4,\beta}} \right)$$

2. Benchmark-to-indicator (B-I) presentation:

$$X_{4,\beta+1} = I_{4,\beta+1} \cdot \left(\frac{X_{4,\beta}}{I_{4,\beta}} \right)$$

Where, in both cases:

$$X_{q,\beta}$$

is the level of the QNA estimate for quarter $q=4$ of year β ; and

$$I_{q,\beta}$$

is the level of the indicator in quarter $q=4$ of year β .

In the ratio approaches, the **step problem** arises because of discontinuities between years. If an indicator is growing more slowly than the annual data that constitute the benchmark, then the growth rate in the QNA estimates needs to be higher than in the indicator. For example, with the pro rata distribution, the entire increase in the quarterly growth rates is attributed to a single quarter, while other quarterly growth rates are left unchanged. The significance of the step problem depends on the size of variations in the annual B-I ratio.

3. Mathematical and statistical techniques

A third approach refers strictly to mathematical and statistical techniques. The quarterly figures are like preliminary estimates that do not match annual estimates. The resulting discrepancies have to be distributed according to some criteria. As shown above, the ratio approach brings with it the step problem. Various time series methods that avoid steps exist, but all have the same purpose: to keep the ratio of movements of the short-term benchmarked series to those in the original series as stable as possible over time.

Widely known and applied, the proportional Denton method uses a least squares technique to minimise the difference in relative adjustment to neighbouring quarters, subject to an annual total binding constraint, thus avoiding the step problem. In mathematical terms, according to the basic version of the proportional Denton technique, the benchmarked series X_t is the solution of the following minimisation problem:

$$\min_{(X_1, \dots, X_{4\beta}, \dots, X_T)} \sum_{t=2}^T \left[\frac{X_t}{I_t} - \frac{X_{t-1}}{I_{t-1}} \right]^2, t \in \{1, \dots, (4\beta), \dots, T\}$$

under the restriction that, for the flow series,

$$\sum_{t=4y-3}^{4y} X_t = A_y, y \in \{1, \dots, \beta\}$$

where:

t

is the time (e.g. $t = 4y - 3$ is the first quarter of year y , and $t = 4y$ is the fourth quarter of year y and may be T);

X_t

is the derived QNA estimate for quarter t ;

I_t

is the level of the indicator for quarter t ;

A_y

is the annual data for quarter y ;

β

is the last year for which an annual benchmark is available; and

T

is the last quarter for which quarterly source data are available.

Using the proportional Denton method implies that the B-I ratio for the fourth quarter of the last benchmarked year is used to prepare the forward QNA series. The B-I ratios for quarters with annual data are usually different and change smoothly, depending on the movements in the annual B-I ratios.

The benchmarking procedure is highly dependent on revisions. When annual national accounts data for previous years are revised, the QNA data for those years are benchmarked to the revised annual data.

Benchmarking can be applied automatically using the following custom software:

1. *BENCH* (*Statistics Canada, 1994*) —now integrated in SAS;
2. *ECOTRIM* (*Eurostat, 2001*) —new version under development;
3. *MATLAB library* (*Bank of Spain, 2009*) , and other ad hoc implementations: Modeleasy+, Gauss, R;
4. *XLPBM* (*IMF, 2012*) —an excel add-in implementing Denton PFD with enhancement for extrapolation.

Seasonal adjustment methods

Seasonal adjustment serves to facilitate an understanding of the evolution of the economy over time, and the direction and magnitude of changes that have taken place. To achieve this aim, it is necessary to compare the results of one period with those of the previous periods obtained in the same conditions. Seasonal adjustment (SA) corrects for seasonal or calendar effects, which means working under the assumptions that the temperature is exactly the same in winter as in the summer, there are no public holidays, religious holidays (e.g. Christmas, Ramadan) have no effect on behaviour, people work every day of the week with the same intensity (i.e. no break over the weekend), and so forth. The presence of such effects in a time series makes comparability more difficult. Effects that occur every year in the same period and with the same intensity, however, remain hidden under annual comparisons.

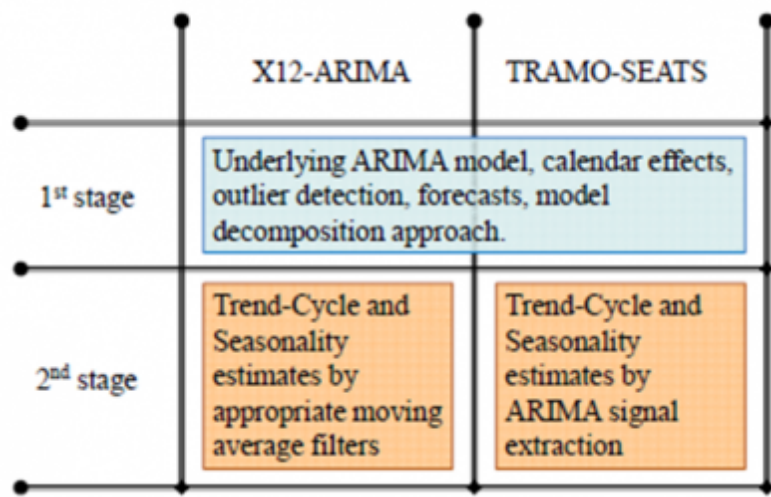


Figure 5: Two-stage seasonal adjustment methods - Source: Quarterly National Accounts Course, Joint Vienna Institute, August 5 - 16, 2013 - IMF Statistics Department

Mathematically, seasonal adjustment means using analytical techniques to break down a series into its components, with the main objective being to identify the components of the time series and thus provide a better understanding of their behaviour. The impact of the regular intra-annual seasonal pattern, the influences of moving holidays, the number of working/trading days, and the weekday composition in each period (the trading-day effect) are removed in the seasonally adjusted quarterly data. By removing the repeated impact of these effects, national accountants can produce seasonally adjusted data that highlight the underlying trends and short-run movements in the series.

Seasonal adjustment is based on the assumption that time series can be decomposed into unknown components, with the simplest presentation being the following:

$$Y_t = f(TCt, St, It)$$

Where:

TCt is the long-term trend and cyclical movements;

St is the seasonal (and calendar-related) effects; and

It is the irregular component.

The trend-cycle Component (TCt) is composed of: long-term upwards/downwards (underlying) trend movement observed over decades; medium-term fluctuations, which commonly define the business cycle turning points; and abrupt changes in the level of the long-term trend. The component TCt may also be presented by its two sub-components: trend and cycle.

Seasonality (St) can be described as all types of intra-annual events that occur regularly with the same annual timing, with a fairly stable magnitude, and in the same direction. Examples of widely known seasonal events are:

- weather seasons: weather conditions change during the year (e.g. more/less rain, warmer/colder environment);
- institutional conventions: agreement on certain administrative rules such as tax collection, bonus payment, and the like;
- induced seasonality: inherent industry conditions due to a relationship with seasonal activities, such as the canned fruit industry or wrapping paper production.

Seasonality (St) also includes calendar-related effects. Since a solar year is not divided into an exact number of weeks, the occurrence of each day of the week within the same month/quarter may differ (e.g. January 2011 and January 2012 both had 31 days, but in 2011 there were 10 weekend days while in January 2012 there were only 9). If a daily pattern of activity exists within the week, and such differences of days exist, then there will be an impact on monthly/quarterly measures. This is called the *trading (or working) day effect*. A solar year is not exactly divisible by 365 days, the remainder becomes a full day every 4 years; February 2012 had 29 days while February 2011 had 28. This event is called *leap year*.

The *irregular component (It)* comprises the remaining non-systematic volatility of the series or its unpredictability. It also contains unusual effects (of unseasonable weather, natural disasters, irregular sales campaigns, etc.) such as outliers. In time series decomposition, as well as for analysis purposes, outliers are very important effects that must be detected and treated, whether or not their cause is known.

Essentially, **the decomposition of the series** by components is based on an equation with two or three non-observable components, thus resulting in infinite solutions. The decomposition could be either additive or multiplicative. There is no best solution, but several possible decompositions exist. Thus, the trend is also non-unique, depending on the applied decomposition. Knowing the components of the series, seasonally adjusted series may be viewed as:

1. original series from which seasonality and calendar-related effects have been removed; or
2. the trend-cycle of the series, including irregular components.

Provided that seasonality and calendar-related effects evolve within certain intervals (known as stable behaviour), seasonally adjusted series contain most of the updates regarding the evolution of the series; namely, changes in trends (shifts), shifts in the cycle (turning points) and irregular effects (outliers).

Demetra+ is an IT tool, developed by Eurostat, for seasonal and calendar adjustment. It offers a choice of two seasonal adjustment methods (X-12-ARIMA and TRAMO/SEATS), and provides user-friendly tools to check the quality of results. It is open, free, flexible software that supports a wide range of uses. The .NET version (1.04) of Demetra+ was released in December 2012, and supports the implementation of the 2009 ESS guidelines on seasonal adjustment. A Java version (JDemetra+) was released in December 2012.]

As a result of the experience gained with the previous versions of Demetra+, the 2012 release offers multi-processing (i.e. a large number of series can be seasonally adjusted at the same time), more advanced diagnostic tools, and compatibility with .xml files.

Seasonally adjusted official statistics are the headline figures, so it is very important to perform seasonal adjustment well. Accordingly, since the 1990s, Eurostat has played a leading role in the promotion, development and maintenance of freely available seasonal adjustment software that supports established best practices. The adoption of the ESS guidelines and the support for their implementation of Demetra+ takes this advocacy even further.

The ESS guidelines cover all the key steps of the seasonal and calendar adjustment process, and

represent an important step towards the harmonisation of seasonal and calendar adjustment practices within the European statistical system and Eurostat. A common policy for seasonal and calendar adjustment of all infra-annual statistics is essential for maximising the quality and comparability of national data, as well as enhancing the overall quality of European statistics.

The ESS guidelines are not restricted to seasonal adjustment *per se*, they also cover the pre-treatment of series, revision policies, quality assessment, documentation, and specific issues related to the limitations of seasonal adjustment. Throughout the document, the reader is presented with a step-by-step process with explanations and reasons for choosing different options when either analysing individual series, or adjusting a large number of series for production purposes.

To download the Demetra+ and the JDemetra+ software, and to access the ESS guidelines and other documents, visit the CROS portal at: <http://www.cros-portal.eu/content/seasonal-adjustment>

Figure 6: Seasonal adjustment using Demetra+ - Source: Handbook on quarterly national accounts, Eurostat, European Commission, 2013

The two main groups of methods for estimation of seasonal adjustments data are the following.

1. *Moving average-based methods*, which use different kinds of moving average filters. Moving average represents a weighted sum of a certain number of values of a time series comprising the observation under consideration and neighbouring observations. While the number of values in the average is kept constant, the time periods 'move' successively, hence the adjective 'moving'. These methods do not rely on an underlying explicit model and were developed mainly on an empirical basis. The best known moving average-based method is the US Census Bureau's X-11 (and its upgrades), which involves the repeated application of suitable moving average filters. This procedure leads to a decomposition of the unadjusted data into its trend-cycle, seasonal and irregular components. The latest update of the model is X-13 ARIMA, but the upgrade most commonly used is X-12-ARIMA.

1. *Model-based seasonal adjustment methods* estimate the trend-cycle, seasonal and irregular components with signal extraction techniques applied to an ARIMA model fitted to the unadjusted or transformed (e.g. logged) data. Each component is then represented by an ARIMA expression and some parameter restrictions are imposed to obtain orthogonal components. TRAMO/SEATS is one of the best known and most widely used methods of this type. In order to isolate a unique decomposition (i.e. the canonical decomposition), TRAMO/SEATS imposes further constraints. These constraints stipulate that the variance of the irregular component be maximised and, conversely, the other components be kept as stable as possible (compatible with the stochastic nature of the model used for their representations).

Both methods are divided into two stages. In the first stage, the model, the calendar effects, and the outliers are estimated (before adjustments and forecasts); in the second stage, the trend-cycle and the seasonal component are extracted.

In general, when applying the seasonal adjustment method based on X12-ARIMA/TRAMO-SEATS, NA compilers should follow **eight steps** :

Step 0: Number of observations It is a requirement for seasonal adjustment that the times series *beat*

least 3 years long (36 observations) for monthly series and 4 years-long (16 observations) for quarterly series. Of course, these are minimum values; series should be longer for an adequate adjustment or for the computation of diagnostics on the basis of the fitted ARIMA model.

Step 1: Graph Compilers should first study the *data and graph* of the original time series before running a seasonal adjustment. Series with possible outlier values should be identified. It is important to check that the outliers are valid and free from sign problems (e.g. erroneous data capture). Missing observations in the time series should be identified and explained. Series with too many missing values will cause estimation problems. If series are part of an aggregate series, compilers should verify that the start and end dates for all component series are the same.

Step 2: Constant in variance *The type of transformation should be used automatically* . Confirm the results of the automatic choice by looking at graphs of the series. If the tests for choosing between additive and multiplicative decomposition models are inconclusive, then national accountants may choose to continue with the type of transformation used in the past for consistency between years, or should visually inspect the graph of the series.

If the series has zero and negative values, then this series must be additively adjusted, as in the equation: $Y_t = TCt + St + It$

If the series is decreasing with positive values close to zero, then multiplicative adjustment must be used: $Y_t = TCt * St * It$

Step 3: Calendar Effects Analysis should determine which regression effects, such as *trading/working day, leap year, moving holidays* (e.g. Easter) and national holidays, may be affecting the series. If the effects are implausible for the series or the coefficients for the effect are non-significant, then regressors (a kind of 'independent variable' representing the inputs or causes) should not be fitted for these effects. If the coefficients for the effects are marginally significant, then it should be determined if there is a reason to keep the effects in the model. If the automatic test of the model does not indicate the need to include a trading-day regressor but there is a peak at the first trading day frequency of the spectrum of the residuals, a trading-day regressor may be fitted manually. If the series is long enough and the coefficients for the effect are highly significant, then six regressors for the trading-day effect should be used instead of one. The regressors represent the elements of the common trading-day (TD) regression and are calculated as follows:

1t TD = (number of Mondays) – (number of Sundays)
2t TD = (number of Tuesdays) – (number of Sundays)
...
6t TD = (number of Saturdays) – (number of Sundays)
where t is the month or the quarter.

Step 4: Outliers There are two ways to identify outliers. *The first is when identifying series with possible outlier values, as in Step 1* . If some outliers are marginally significant, compilers should check if there is a reason to keep the outliers in the model. *The second possibility is when automatic outlier correction is used* . The results should be confirmed by studying graphs of the series, and any additional available information (economic, social, etc.) on the possible cause of the detected outlier should be used. A high number of outliers signifies that there is a problem related to weak stability of the process, or that the data are unreliable. Series with a high number of outliers relative to the series' length should be identified. This can result in many interventions (over-specifications) in the regression model. The series should be remodelled by reducing the number of outliers. The outlier regressors that are revised should be considered carefully. Expert information about outliers is especially important at the end of the series because outlier type is unclear from a mathematical point of view, and changing outlier type (e.g. removing a level shift) leads to large revisions at a later date.

Step 5: ARIMA model *Automatic model identification should be used once a year* , but re-estimation of the parameters is recommendable upon adding new observations. If the results are implausible, then following the procedure described below is advisable. Non-significant high-order ARIMA model coefficients should be identified. It may be helpful to simplify the model by reducing the order of the model, taking care not to skip lags of AR (autoregressive) models. For moving average (MA) models, it is unnecessary to skip model lags whose coefficients are non-significant.

Step 6: Check the filter (*optional*) The critical X-11 options in X-12 ARIMA are the options that control the extreme value procedure in the X-11 module, and the trend and seasonal filters used for seasonal adjustment. National accountants should verify whether seasonal filters are in agreement with the overall moving seasonality ratio. After reviewing the seasonal filter choices, the seasonal filters in the input file should be set to the specific chosen length, so they will not change during production. The SI-ratio graphs in the X-12 ARIMA output file

should be studied. Any months with many extreme values relative to the length of the time series should be identified.

Step 7: Residuals *There should not be any residual seasonal and calendar effects in the published seasonally adjusted series or in the irregular component.* The spectral graph of the seasonally adjusted series and the irregular component may be looked at (*optional*). If there is residual seasonality or a calendar effect, as indicated by the spectral peaks, the model and regressor options should be checked in order to remove the residual peaks. If the series is a composite indirect adjustment of several component series, the checks mentioned above in the aggregation approach should be performed. Among others, the tests for normality and Ljung-Box Q-statistics should be studied in order to check the model's residuals.

Step 8: Diagnostic The stability diagnostics for seasonal adjustment are the sliding spans and revision history. Large revisions and instability indicated by the history and sliding spans diagnostics imply that the seasonal adjustment is not useful.

TRAMO/SEATS and X-12-ARIMA, together with well-documented and stable interfaces to use these tools, provide a sound basis for seasonal adjustment. The choice between these applications may be based on past experience, subjective preference and characteristics of the time series. These applications should be reviewed on a regular basis and, if necessary, updated after satisfactory testing. The methods and specifications currently used in seasonal adjustment should be clearly communicated to users.

Seasonal adjustment of QNA is a **specific activity** that requires specific knowledge of econometrics. Both TRAMO/SEATS and X-12-ARIMA provide extensive aids for helping analysts achieve high quality seasonal adjustments, but the range of options and diagnostics may be difficult to understand for newcomers to the field. While both programs can be configured to work automatically, the automated choices made by the software should never be accepted blindly (see steps described above), hence the strong argument for having seasonal adjustment specialists performing the seasonal adjustment for QNA.

An arrangement that has proved to be successful in a number of countries is one whereby a small team of seasonal adjustment specialists meets the seasonal-adjustment needs of the whole NSI. The specialist statisticians, including the national accounts compilers, are responsible for the routine seasonal adjustment of the data each month or quarter. Whatever the arrangements within an NSI, it is imperative to have a pool of individuals responsible for the seasonal adjustment of QNA with a high degree of seasonal adjustment expertise.

Production approach to QGDP

The production approach is the most common approach for compiling QGDP, predominantly because of the availability of data within the statistical systems. Following the national accounts methodological requirements, QGDP from the production side should be estimated based on the independent compilation of its main elements: output, intermediate consumption and net taxes on production. In standard practice, however, the quarterly data necessary for intermediate consumption estimates are often unavailable, and estimates of [GVA](#) are derived only using estimates of output or a proxy for output.

In order to derive the volume estimates of output or GVA directly, the volume indicators related to output (output-related index) may be used. Such indicators include sales or turnover data, or product quantities. This process allows for extrapolation of the output in the base period. Also, input-related indices such as employment may be used when output indices are unavailable.

The section entitled, [How to measure price and volume in SNA](#) under the Chapter 9: *Volume Measures*, in [Building the System of National Accounts](#) presents the basic methods for deriving volume measures.

Compiling the production account (output, intermediate consumption and GVA) at current prices and in volume terms requires detailed information on both output and current expenses, which may be unavailable at a quarterly frequency. Estimation of the missing data must rely on the use of other series as an indicator. Most commonly, output data is available, while data on intermediate consumption is missing. In other cases, data on total intermediate consumption, component(s) of intermediate consumption, labour inputs or capital inputs may be available as indicators. The quality of the estimate depends on the assumption of a stable relationship between the indicator and the target variable.

Relationships between inputs and outputs (input–output ratio or IO coefficients) may change as a result of technological changes, differences in seasonal patterns of outputs and inputs, or variations in capacity utilisation caused by changes in the business cycle. The impact of technological changes is non-significant in the short term, and the benchmarking process is capable of handling such changes if they happen gradually over a long period. It is preferable to use benchmarking rather than fixed ratios.

An implicit ratio of GVA in output (GVA/output ratio) may be established and used in order to compile current and constant price estimates in the absence of other information. These ratios, derived from annual estimates, must be checked and updated continuously. The initial estimates of quarterly GVA by kind of activity for market sector activities may also be based on the assumption that output and intermediate consumption grow with the same rate in volume terms, either from the previous quarter or from the same quarter of the previous year.

In the process of performing the inventory and assessing the available data sources, an important activity is to separate the information by activities at the classification's chosen detail level to obtain the total GVA as the sum of corresponding values for all activities within the economy.

Output

Figure 7 presents indications on what kind of sources or information can be used in the compilations, in general, for both current and constant prices.

<i>ISIC Sections</i>	<i>Rev.4</i>	<i>Components</i>	<i>Sources/ Indicators</i>
<i>Agriculture, forestry</i>		Output - Wheat and barley - Other grains - Livestock slaughtering - Whole milk and eggs - Wool production - Animal production (GFCF) - Other crops - Fruits and vegetables - Other horticultural products - Forestry	Indicators: - Marketing boards - Harvesting data - Quantity of meat produced and prices obtained from abattoirs - Numbers of animals slaughtered - Data on deliveries - Quantity data - Stock numbers from agricultural censuses - Allocation of annual estimates - Quantities and values delivered at auctions - Annual turnover from trade associations (allocated to the quarters) - State forestry sales - Labour force in forestry - Quantity of timber felled - Official government estimates
		Intermediate consumption	Administrative data - Statistics on quantities - Indicators: o Costs of marketing, fodder, fuels o Fodder and consumption of fertilizers
<i>Fishing</i>			- Value and size of catches - Sales revenue and quantities - Amount of fish slaughtered on fish farms
<i>Mining and quarrying</i>			- Production information: quantity data, expenditures on mineral exploration; metres drilled, etc. - Data from short term statistics—Indices: IPI and PPI - Turnover from VAT statistics
<i>Manufacturing</i>			- Data from STS - Indices: IPI and PPI - Turnover from VAT statistics
<i>Electricity, gas, steam and air conditioning supply</i>			- Quantity data - Sales provided by specialised units - Data from short term statistics - Indices: IPI and PPI - Turnover from VAT statistics - Consumption on inputs
<i>Water supply, sewerage, waste management and remediation activities</i>			- Quantity data - Sales provided by specialised units - Index of industrial production - Turnover from VAT statistics or business surveys - Consumption on inputs
<i>Construction</i>		Private sector - Residential construction - Non-residential construction	- Data from short term statistics; Building and engineering construction surveys - Turnover from VAT statistics - Administrative data concerning the building permits - Employment figures - Indicators: o Estimates of work put in place by type of dwelling o Estimates of work put in place by type of structure o Construction surveys
		Public sector construction	- Budget data - Estimates of work done - Employment indicators - Budget data
<i>Wholesale and retail trade; repair of motor vehicles and motorcycles</i>			- Sales from short term statistics and/or VAT statistics - Sales by public market authorities - Output volume indicators - Volume trade index - Sum of calculated trade margins
<i>Transport and storage</i>		Transport - Air transport, pipeline system, water transport, ferry operations, etc. - Transit operations - Road haulage - Taxicab services	- Turnover from VAT statistics and/or short term statistics - Index of industrial production - Volume indicators: o Passenger numbers o Passenger kilometres o Weight/volume kilometres o Volume measures of output of industries relying on road haulage - Employment data
		Postal and courier services	- Turnover from VAT statistics and/or short term statistics - Gross revenue of the postal service - Volume indicators: data for letters and parcels
<i>Accommodation and food service activities</i>		Accommodation	- Turnover from VAT statistics and/ or business surveys - Indicators: o Balance of payments data o Statistics on nights spent by non-residents o Estimation according to total domestic consumption o Nights spent in hotels
		Food service activities	- Turnover from VAT statistics and/ or business surveys
<i>Information and communication</i>		Publishing Motion picture, video and television programme production, sound recording and music publishing activities Programming and broadcasting activities Telecommunication Computer programming consultancy and related activities TISIM	- Index of industrial production - Indicators: o Employment indicators o Audience viewing hours o Sample surveys of radio advertising sales o Number of subscribing to cable services - Turnover from VAT statistics and/ or business surveys
		Other financial services	- Indicators: Stocks of financial assets and liabilities and interest payment flows of financial intermediaries from prudential regulation authorities or central banks
<i>Financial and insurance services</i>			- Indicators: Stocks of financial assets and liabilities and interest payment flows of financial intermediaries from prudential regulation authorities or central banks

A summary of the main methods used for the estimation of quarterly **output** by activities appears below.

Agriculture, forestry and fishing For these activities specific estimates should be made for the output produced and sold in the same quarter (e.g. milk and eggs) and the outputs that extend over a number of quarters, such as:

1. cases of 'one-off' production, such as annual crops, trees for timber and livestock for consumption. Unfinished output, such as growing crops is classified as work-in-progress.
2. 'continuing' production, covering, for example, fruit trees, vines, breeding, and dairy cattle. These are unfinished outputs classified as work-in-progress and converted to GFCF when completed.

For these cases, the 2008 SNA requirements recommend that the output of crops and similar production be considered in the same way as for other industries where production spans a number of quarters. Thus, the total value of the output of the crop over the whole period of production is recorded in proportion to the costs incurred in each quarter. The costs considered for inclusion are: material inputs, compensation of employees, a return to the labour and capital of unincorporated enterprises (gross mixed income), and a return to capital of incorporated enterprises (gross operating surplus).

The application of the recommendations raises two major issues: the need to estimate a value for the crop before the harvest is sold; and the imputation of a value for activity (or income) at least two quarters before it actually takes place (or is received). The two main solutions to these problems are the following.

1. First solution:

[U+2010] in quarters where preparatory work is being undertaken for the harvest and the crop is reaped, output is taken to be equal to the input costs;

[U+2010] in the quarter(s) in which the crop is sold, output is taken as the difference between receipts in the quarter(s) and the costs incurred in the previous quarters.

2. Second solution:

[U+2010] the output of crop products at both current and constant prices are compiled on the basis of an estimation of the annual production (harvest) and a distribution on quarterly values in proportion to inputs;

[U+2010] the output of animal products at both current and constant prices is obtained by extrapolation using indicators based on surveys and agricultural statistics.

Mining and quarrying Taking into account the general data sources available for this industry, the methods applied are extrapolation by quantity indicator, and inflation with the output prices, unit value indices and import indices.

Manufacturing For the manufacturing industry, estimates should be made at the most detailed level possible (i.e. at least at the [ISIC rev.4](#) two-digit level). The extrapolation method can be applied using volume indicators (IPI), deflation of current values with corresponding PPI, or direct estimation based on turnover obtained from VAT statistics.

The section entitled [Transition to national accounts](#), in the article [Building the System of National Accounts - administrative sources](#) presents the estimation of output based on administrative data source.

Electricity, gas, steam and air conditioning supply The value of the turnover from specialised enterprises can be used for the estimation of the output. In the absence of reliable information about turnover and other elements necessary for the estimation of the output, volume indicators (number of kwh or m3 of water) and price index (PPI for electricity, CPI for water supply) can be used. Current prices could be extrapolated on the basis of data from the companies (volume indicators).

Construction

The estimation of construction output on a quarterly basis is a difficult task. Feasibility is limited by the availability of data, as construction enterprises are often small and production may be hard to separate by quarters. Construction output can be measured in various ways, corresponding to different stages in the building process and the availability of source data.

1. The supply of building materials is often the most readily available construction volume indicator. While building companies tend to be small and dispersed, building materials are often produced by a relatively small number of large factories and quarries. Data on exports and imports of building materials are also generally available and may be important for some kinds of building materials in some countries.
2. Building permits provide information on the location, type of building (building or dwelling), kind of building activities, building costs, content, floor area and estimated building time. This information can be used to calculate, on a monthly basis, the different stages of the building process and to monitor its progress in order to identify the output.
3. Turnover reported by construction businesses to the tax authority or as a result of statistical surveys.
4. Households reports of their own consumption, collected by statistical surveys.

An example for the calculation of the output and intermediate consumption in construction, based on the supply of raw materials, is presented in Figure 8.

Row	Indicators	Data source/Calculation	2009	2010
1	Construction output	row 10 / 65%	435	480
2	Import raw materials	from the BoPs	173	190
3	VAT import	administrative data	24	29
4	Tax duties	administrative data	8	9
5	Export of raw materials	from the BoPs	15	20
6	Net import raw materials	row 2 + row 3 + row 4 - row 5	190	208
7	Trade margins	row 6 x 20 / 100	38	42
8	Net import	row 6 + row 7	228	250
9	Local construction materials	data from manufacturing production	55	62
10	Total raw materials	row 8 + row 9	283	312
11	Other consumption	row 10 x 10%	28	31
12	Total IC	row 10 + row 11	311	343
13	GVA	row 1 - row 12	124	137
14	Ratio IC/O (%)	row 12 / row 1	71	71

Assumptions based on annual accounts:

- the IC represents 65% from the output,

- the value of trade margin represents 20% from the sales,

- other intermediate consumption elements represent 10% from the consumption on raw materials.

Figure 8: Example of estimation of construction indicators

Wholesale and retail trade; repair of motor vehicles and motorcycles Sales data commonly serve as quarterly indicators for the output of wholesale and retail trade. Business surveys or administrative sources (VAT data) may yield sales data; shares of trade margins in the total sales from the previous year serve as indicators for the current price estimation. The constant prices can be obtained by extrapolating the sales based on the turnover volume index (in the absence of this information, the CPI provides an alternative), and deflation of goods bought for resale using PPI for the specific products.

Transport and storage The compilation of output should be made at a detailed level (at least at the two-digit level of ISIC rev. 4) by kind of transport services. Extrapolation of indicators based on the VAT statistics in combination with a deflator or inflator based on the relevant price index is recommendable. For some activities, volume indicators like tonne km and passenger km can be used.

Accommodation and food service activities Estimation of the output is based on turnover provided by VAT statistics or business surveys. Turnover value indices are used for deflation and estimation of the output in constant prices. For accommodation services, the extrapolation method is sometimes applied based on available volume indicators (number of beds in hotel, number of nights, etc.).

Financial and insurance services FISIM is the indirect payment to the financial institutions for intermediary services. The supply of FISIM is produced in resident financial institutions, and is imported by residents who pay interest for loans abroad and by residents who have deposits abroad. The demand for FISIM is used for intermediate consumption, final consumption expenditure and exports.

On a quarterly basis, it is possible to estimate FISIM directly based on data sources provided by the national central bank. The distribution of quarterly FISIM between users usually relies on some assumptions. For example, intermediate consumption of FISIM can be regarded as a service similar to other consumed services and is thus part of the fixed coefficient estimation of intermediate consumption (see Section 3.2). For imports and exports, the assumption is that FISIM has the same share of interests to and from abroad as in the final version of annual national accounts. The output of insurance and pension funding at current prices can be compiled by extrapolating an indicator based on the number of employees in the industry. For activities auxiliary to financial intermediation, the value of output at current prices is compiled based on data from VAT statistics. The measure of the volume of these activities on a quarterly basis usually uses the relevant index of average earnings as a deflator.

Other services, including real estate activities; professional, scientific and technical activities, administrative and support services; education, human health and social work activities (market activity); arts, entertainment and recreation (market activity); other service activities Data from VAT statistics and short-term business surveys (usually monthly) contribute to the estimation of the output. One element of the real estate activity that requires specific estimation from national accountants is the imputed rent. Data concerning the quarterly own-dwelling services can be estimated by extrapolation on the basis of the number of dwellings. If construction data do not allow estimates of the net increase in the number of dwellings, population may be used as a proxy (preferably adjusted for any trends in the average number of persons per dwelling). Due to the differences in the average rent per dwelling, the quality of the estimation can be improved by doing separate calculations by location and by different dwelling types (e.g. house/apartment, number of bedrooms). Compilers should also consider employing an adjustment factor to account for any shortcomings in this method (e.g. for long-term changes in the size and quality of dwellings). These factors should be estimated for annual accounts, so that their effects are incorporated into the quarterly estimates by the benchmarking process. The extrapolation using the turnover value indices is advisable for the estimation at constant prices. If these indices are unavailable, the use of CPI represents one option, as long as the methodological requirements are followed. The estimation of the quarterly imputed rent represents one of the challenges of this process. Based on the availability of data sources, different methods have been developed and may be applied. For instance, the use of the annual data of the previous year and the growth rate of the construction of dwellings is an option for the output estimation.

Public administration and defence; compulsory social security; education, human health and social work activities; arts, entertainment and recreation (non-market activities) The direct estimation method is applied using data from the government budget. Consumption of fixed capital, as part of the output of non-market output, may be calculated using annual figures, divided by quarter.

Education, human health and social work activities, arts, entertainment and recreation, other service activities (market activities) For this kind of activity, extrapolation of the output based on the turnover is generally used. Data from the VAT system and from short-term statistics are used.

Intermediate consumption

For the compilation of [intermediate consumption](#) data, few sources are available on a quarterly basis. Some information may be available for purchases (usually for government and sometimes for businesses) or the change in inventory, based on special surveys carried out by the statistics office.

Objective: to calculate the intermediate consumption (IC) in the second quarter of 2013 for manufacturing of textiles.

The available information is:

	Quarter II, year 2012	Quarter II, year 2013
Output at current prices	210	214
Output at prices of the previous year	207	211
IC at current prices	130	Should be estimated
IC at prices of the previous year	127	Should be estimated

Estimation procedure:

Step 1: Estimation of the IC for quarter II 2013 at constant prices

Assume that the growth rate of the IC is the same as for the output (the coefficient I/O is constant)

Value of the IC at constant prices:

- I/O ratio = $130/210 = 0.62$
- IC at constant prices = output at constant prices x I/O = $207 \times 0.62 = 128$

Step 2: Estimation of the IC at current prices

The structure of the IC from SUTs or other sources is presented in the table below. Each element of the IC is reflated with the corresponding price indices.

	Structure of the IC	Value of the IC at constant prices quarter II 2013	Price indices	Value of the IC at current prices quarter II 2013
	(1)	(2)	(3)	(4)
Total IC	100	128		131
Product A	14	18	103.4	19
Product B	47	60	101.9	61
Product C	12	15	102.6	16
Product D	27	35	102.3	35

Calculation:

Column (2) (e.g. Product A) $18 = 14 \times 128.0/100$

Column (4) (e.g. Product A) $19 = 18 \times 103.4/100$

Figure 9: Example of intermediate consumption estimation

One method for the estimation of the intermediate consumption relies on the assumption that the output and the intermediate consumption growth follow the same trend in terms of volume. Thus, the first step is to estimate intermediate consumption at constant prices using the constant price output as an indicator. This method assumes a stable ratio of the inputs in output (IO ratio), modified by annual trends in the ratio that are incorporated through the benchmarking process. Intermediate consumption at current prices can then be derived by reflating the constant price estimate by price indices that reflect the product composition of intermediate inputs. Because specific producer price indices (PPI) for inputs are non-existent, this should be constructed by weighting together relevant price indices for each component of the intermediate consumption. These indices include the CPI, PPI and foreign trade price indices—for inputs, data are supplied by imports.

The use of a fixed ratio between output and intermediate consumption is a way to make maximum use of the available information, and this method is often valid because the structure of the output and intermediate consumption in terms of volume is slow to change over time. In any event, this method has some weaknesses:

1. it does not take into account the improvement of the efficiency of the production process;
2. the change in volume of goods and services of the intermediate consumption can differ between quarters;
3. for some industries, particularly agriculture, the input–output ratio can fluctuate greatly in the short-term.

Taxes and subsidies on products

The estimation of taxes on products in current prices is based on revenues and expenditures recorded in government and customs administrative data (excise duties, VAT on imports). Compilers should pay special attention to the application of the accrual valuation principle. For constant prices estimation, the same methods of annual estimation are applied (for more information, see Chapter 9: *Volume measures*).

The subsidies on products are provided by the Ministry of Finance, but the payments are usually made and recorded in a different quarter from that of the production itself. This is the case for subsidies that may be regarded as essentially annual in nature, and for which the quarterly payments are insignificant. In these cases, estimates should be obtained by relating the subsidy to the economic activity for which it is due.

Exhaustiveness

The estimation of QGDP should follow the same methodological requirements as for annual data. Adhering to this principle ensures the exhaustiveness of quarterly estimates. Differences in the size of the non-registered

economy normally owe to economic and social structures, and the stage of development of the statistical system. The main topics of exhaustiveness that appear in the annual accounts should be included in quarterly GDP, too. These refer, in general, to the following areas:

1. underreporting and non-registration of the activity in order to avoid the payment of taxes and fulfil the legislative requirements;
2. non-coverage of the national accounts indicators due to statistical under-recording;
3. estimation of the informal sector;
4. estimation of illegal activities.

The Chapter 8: *The informal sector*, in [Building the System of National Accounts](#) includes information concerning the estimation of the non-observed economy and informal sector in annual national accounts.

Estimating the [non-observed economy \(NOE\)](#) for annual national accounts is a difficult task. This difficulty intensifies when compiling quarterly accounts due to the lack of sources and additional information in this area. The methods developed for quarterly estimates take into account the characteristics of the economy and the trend of the quarterly production of specific activities (e.g. the value of the non-observed economy in construction is bigger in the warmer half of the year—April to September in the Northern Hemisphere and October to March in the Southern Hemisphere—due to the increase in activity in these periods).

Usually, the method for estimating the non-observed economy is based on projections because directly measured data are unavailable on a quarterly basis. Thus, the identification of suitable indicators related to the evolution of the non-recorded data represents one of national accountants' key tasks and requires a deep knowledge of this phenomenon, the methods used for annual estimates and the availability of data sources. The use of suitable proxy indicators based on the methodology for annual NOE estimation is common practice.

Expenditure approach to QGDP

There exist various data sources and methods for the compilation of components for QGDP using the expenditure approach, which this section expands upon.

Final consumption expenditure of households

The final consumption of households is usually the largest component of GDP by expenditure. The main sources of data on household consumption on a quarterly basis are:

1. sales/turnover statistics—by 'type of outlet' (wholesale, retail, etc.);
2. household survey on expenditure;
3. value added tax (VAT) systems;
4. business short term statistics—for services rendered to the population.

Apart from the above sources, data on production and foreign trade in consumer products can be used to derive estimates using the commodity flow approach. Statistics on trade and business surveys of other consumer services provided to households are also common data sources for the estimation of household consumption at current prices.

In addition to broad sources such as retail sales, VAT systems and household surveys, there are a range of specific indicators for components of household consumption, which include specialised statistical surveys, major supplying enterprises and regulators. Some information can be collected specifically for QNA, when there are a small number of large suppliers of a particular item, but the data are not currently published. An example of this is the sales of electricity, gas or water to residences, as well as some components of transport and communication. Of course, just like for annual estimates, the quarterly data need to be adjusted to the domestic concept, using information from BoPs.

The commodity flow approach can be used when there are good data on the supply of the products, namely production and imports. This method may be particularly useful for goods supplied by a relatively small number of producers and importers, and data on the supply of the goods are easier to collect than data on sales

at the retail level. The household consumption is obtained as a residual from the supply approach, after the intermediate consumption, government consumption, fixed capital formation, and changes in inventories are estimated and deducted.

Figure 10 lists the main data sources for quarterly estimation of the final consumption expenditure of households, classified by COICOP (the classifications used in national accounts are presented in Chapter 4: *Business register and statistical classifications*).

COICOP one-digit level	Data sources/Indicators
01-Food and non-alcoholic beverages	- Sales or turnover statistics - Commodity flow method - Household surveys
02-Alcoholic beverages, tobacco and narcotics	- Sales or revenue statistics - Commodity flow method - Household surveys - Tax records of tobacco - Trend extrapolation
03-Clothing and footwear	- Sales or revenue statistics - Commodity flow method
04-Housing, water, electricity, gas and other fuels	- Sales or revenue statistics - Commodity flow method - Household surveys - Trend extrapolation - Housing stock (rents) - Quantity purchased (motor fuel) - Water data, volumes of gas, electricity, etc. provided to households - Revenues statistics from utilities - VAT returns (house repairing)
05-Furnishings, household equipment and routine household maintenance	- Sales or revenue statistics - Employment/earnings in the activity concerned - Commodity flow method
06-Health	- Employment/earnings in the activity concerned - Trend extrapolation - Social security benefits, fees charged - Beds occupied (hospitals) - Medical and hospital insurance claims
07-Transport	- Sales or revenue statistics - Household surveys - Passengers, passengers km - Freight km - Traffic indicators - Stock of vehicles (personal transport) - New motor vehicle registration
08-Communication	- Trend extrapolation - Stock of receivers (radio and TV repairs) - Radio and TV licences (telecommunications) - Minutes spoken (household sector)
09-Recreation and culture	- Sales or revenue statistics - Trend extrapolation - Household survey on tourist services
10-Education	- (Private education) employment/earnings in the activity concerned
11-Restaurants and hotels	- Sales or revenue statistics - Number of overnight stays in hotels
12-Miscellaneous goods and services	- Sales or revenue statistics - Employment/earnings in the activity concerned - Trend extrapolation - Population growth (personal services) - Funeral services (death rate) - Stock exchange transactions (brokerage charges) - Output of the services providers (finance, banking and insurance services)

Figure 10: Data sources/Indicators for final consumption expenditure of households by COICOP
- Source: Handbook on quarterly national accounts, Eurostat, European Commission, 2013 and author's contribution

Final consumption expenditure of general government

Government accounting data showing revenues and expenditures are often available on a monthly or quarterly basis. For quarterly national accounts, the fundamental requirement is to have the expenditures classified by economic type, in particular, consumption of goods and services, capital formation of goods and services, other expenditures.

As already mentioned (see Section 1.3 *Some conceptual issues*), the problem of the time of recording is an issue for government consumption (both individual and collective), due to the tendency to record expendi-

tures and revenues on a cash basis rather than on an accrual basis. One consequence of recording on a cash basis is that the estimates of expenditures in the government account may be inconsistent with the output and income recorded by producers who have supplied goods and services. The degree of potential inconsistency is likely to vary by country, depending on the government recording practices and the nature of the spending.

National accountants should examine the series of government consumption to check whether the data appear erratic or implausible (e.g. where expenditure is much higher in the last quarter of the budget year), and are therefore unlikely to be consistent with the associated figures in the production accounts. In these situations, the national accountants, together with the providers of information, should establish suitable assumptions, and should then identify the best methods to ensure consistency with the other national accounts indicators.

Final consumption expenditure of non-profit institutions serving households (NPISHs)

Although they could be estimated together with consumption expenditure of households, estimates are often made separately. When this is the case and, unlike for annual estimates, no quarterly data sources exist, the quarterly estimate of NPISHs final consumption expenditure is often based on the movements in 'indicator' series, such as compensation of employees at current prices and employment at constant prices, or trend extrapolation. In any case, the relationship between the actual figures and the indicator series should be reviewed to verify the inclusion of the most recent annual figures.

Gross fixed capital formation

The main data sources for annual and quarterly gross fixed capital formation (GFCF) compilation are surveys of capital expenditure by businesses. These surveys, however, are particularly expensive and difficult to conduct on a quarterly basis. The coverage of the enterprises that make investments is difficult to control using the statistical business register. For instance, new enterprises, which may not yet even be in operation, are likely to have higher rates of capital formation than established businesses. At the same time, the target population is all enterprises, although a large number of enterprises will have little or no capital formation in any particular quarter. Consequently, the sample frame needs frequent updating, and the samples have to be relatively large.

Gross fixed capital formation	Sources/Indicators
Dwellings	<ul style="list-style-type: none"> • Building activity statistics (e.g. value/volume of work done by builders) relating to dwellings • Capital outlays by purchasers of capital goods (improvements to dwellings, public construction) • Number of units sold (brokers' commissions on sale of new dwellings) • Index of construction output or turnover • Number of building permits issued, with adjustments for delay/completion • Production or sale of building products, such as concrete • Labour inputs in physical terms and labour cost
Other buildings and structures	<ul style="list-style-type: none"> • Building activity statistics (e.g. value/volume of work done by builders) relating to non-residential building • Civil and other engineering construction activity statistics • Capital outlays by purchasers of capital goods • Index of construction output or turnover, other than dwellings • Labour inputs in physical terms and labour cost • Investment intentions • Production or sale of building products, such as concrete
Transport equipment	<ul style="list-style-type: none"> • Capital outlays by purchasers of capital goods • Product (i.e. commodity) flow approach (using manufacturing output, and export and import data by product) • Estimated commercial share of dealers' sales, new motor vehicle registrations
Other machinery and equipment, of which: <ul style="list-style-type: none"> • Office machinery and hardware • Radio, TV and communication equipment 	<ul style="list-style-type: none"> • Capital outlays by purchasers of capital goods (corporate sector) • Product flow approach • Average purchase by farms/unincorporated businesses multiplied by estimated number of farms/unincorporated businesses (machinery and equipment)
Weapons systems	<ul style="list-style-type: none"> • Government finance statistics
Cultivated assets	<ul style="list-style-type: none"> • Extension of annual models used to derive estimates of the production of cultivated assets
Intellectual property products, of which: <ul style="list-style-type: none"> • Computer software • Research and development 	<ul style="list-style-type: none"> • Value/volume of work done by capital goods producers • Product flow approach • Metres drilled (oil and gas exploration well drilling) • Labour inputs in physical terms and labour cost • Turnover from VAT statistics or business surveys (for computer software)

Figure 11: Data sources/Indicators for gross fixed capital formation - Source: Handbook on quarterly national accounts, Eurostat, European Commission, 2013

Administrative data, such as the VAT system, offers another source for quarterly GFCF estimation. If the system requires enterprises to provide detailed information about the capital and intermediate purchases on these conditions, this yields a useful indicator for capital formation.

The largest components of GFCF are construction and equipment, followed by cultivated assets (such as livestock and orchards) and intangible assets (such as mineral exploration, computer software, entertainment, literary and artistic originals, and research and development). The costs associated with the purchase of fixed and other assets are also included, such as transfer costs, architects' fees and installation costs. Own-account production of capital is also important in some cases, notably including construction, computer software or research and development. The estimation of GFCF on construction raises the same problems as for the estimation of the construction output (presented in Section 4.1).

Estimation of GFCF on a quarterly basis is commonly derived from a mix of demand-side and supply-side data. For example, estimates of GFCF of equipment by corporations are commonly derived using data from capital expenditure surveys or imports. The components of GFCF relating to dwellings, other buildings and other structures are commonly derived from data obtained from producers in the construction industry.

Changes in inventories

Inventories are defined as goods and some services that have been produced or imported but have not yet been used for consumption (intermediate and final), fixed capital formation, or exports. They are explicitly presented only on the expenditure side of GDP, even if they are part of the output and intermediate consumption (see Chapter 6: *Administrative data sources*, Section 2: *Transition to national accounts*).

Although changes in inventories are a small component of GDP, they may vary substantially between strongly positive and strongly negative. Consequently, this component may be a major factor in GDP movements, especially on a quarterly basis, where they are often one of the major quarterly growth factors. Over the long term, the contribution of changes in inventories to GDP tends to be small because some of the quarterly volatility will cancel itself out over the course of the year.

The estimation of changes in inventories presents some difficulties in terms of valuation, both annually and quarterly. In the financial records of businesses, several varieties of historical costs are used, but none of them matches the national accounting valuation concepts. Measurement practice also varies, from complete physical stock-takes to samples and estimates.

A practical example for the estimation of changes in inventory based on the accounting data is presented in Annex 3.1 of Chapter 3: *Estimation of Changes in Inventory*, of the handbook *Quarterly National Accounts Manual - concepts, data sources, and compilation*, by Adriaan M. Bloem, Robert J. Dippelsman, Nils Maehle, International Monetary Fund, Washington DC, 2001.

Some countries derive the changes in inventories in GDP by expenditure as a residual, especially on a quarterly basis. This method is applicable if there is a complete measure of GDP from the production approach and estimates are available for all other expenditure categories. As inventories should also be included in estimates of output and intermediate consumption, measurement issues still need to be resolved. Considering the changes in inventories as a residual means that they include the net effect of errors and omissions incurred in the compilation process. In order to avoid inconsistency in estimates, the changes in inventory should be compiled independently, using the available data sources as much as possible. Figure 12 shows the main data sources/indicators available for the estimation of changes in inventory.

Sections ISIC rev.4	Name	Sources/Indicators
A	Agriculture, forestry and fishing	- Business surveys (wool and fruit stocks) - Information from holders of farm stocks - Product flow (agricultural stocks, forestry stocks) - Models (growing crops and maturing livestock)
B,C,D,E	Mining and quarrying; manufacturing; electricity, gas, steam and air conditioning supply; water supply; sewerage, waste management and remediation activities	- Business surveys (mining, manufacturing, energy) - Information from shareholders (oil refineries, bulk petroleum stations, electricity utilities and at car and truck dealerships) - Figures assumed to move in line with unincorporated manufacturing and trade inventories (unincorporated enterprises)
F	Construction	- Business surveys (new housing stocks) - Assumed to move in line with usage of construction materials
G,H,I	Wholesale and retail trade; repair of motor vehicles and motorcycles; transportation and storage; accommodation and food service activities	- Business surveys
J	Information and communication	- Business surveys - Employment
K	Financial and insurance activities	- Business surveys - Employment
L	Real estate activities	- Business surveys - Financial records
M,N	Professional, scientific and technical activities; administrative and support service activities	- Business surveys - Employment
O	Public administration and defence; compulsory social security; education; human health and social work activities	- Government finance statistics
R	Arts, entertainment and recreation	- Business surveys - Employment

Figure 12: Data Sources/Indicators for changes in inventories - Source: Handbook on quarterly national accounts, Eurostat, European Commission, 2013

Imports and exports of goods and services

Data for imports and exports of goods are usually available in all countries. Quarterly data are generally available for exports and imports of services from balance of payments estimates, and are used directly in national accounts compilation. External trade statistics or custom authorities supply data on the imports and exports of goods.

Combining different techniques for compiling GDP can mitigate the weaknesses of each method. Production and expenditure data can be combined based on the commodity flow method. The method is based on the fundamental national accounting identity of goods and services accounts, and supply and use tables (i.e. total

supply (by product) = total use).¹

The commodity flow method can be applied on different levels, such as for groups of commodities or for individual commodities. The more detailed the level at which the method is applied, the more accurate the result—detailed information requires fewer assumptions about origin and use.

Revisions and dissemination

Revisions

Revisions are a common characteristic of both quarterly and annual national accounts, but they have particular significance for the quarterly indicators because they tend to be more substantial and occur more frequently. The balance between the statistics office's limited resources on the one hand and the user needs on the other raises a dilemma between timeliness of published QNA, and the guarantee of reliability, accuracy and comprehensiveness. In order to meet user needs, preliminary quarterly data are compiled and are later revised when better source data are available. Good management of the process of revisions relies on a well-established and transparent revision policy.

It is important to emphasise that the revisions are carried out *for the benefit of users*, to provide them with data that are as timely and accurate as possible, while later incorporating new, more accurate information without introducing breaks in the time series. Sometimes, the revisions may seem to reflect negatively on the trustworthiness of official statistics, but the lack of revisions can have a much more detrimental effect. This may indicate that no better information is available to improve the poor first estimates. Finally, attempting to avoid revisions by producing accurate but highly untimely data, and thus of little use to users, is a wasteful use of the available information.

To avoid unnecessary criticism, a well-designed and carefully managed revision policy is crucial. Essential features of a well-designed revision policy are predictability and openness, advance notice of causes and effects along with explanations, and easy access to sufficiently long time series of revised data.

The main factors contributing to accurate quarterly national accounts revisions are:

1. preliminary data sources used for quarterly indicators are revised;
2. seasonally adjusted data are revised when more data allow better estimates to be made of the current seasonal pattern;
3. revisions occur when quarterly figures are benchmarked to more accurate and updated annual figures.

An awareness of two types of revisions is important: revisions applied **by reason** and revisions applied **by scheduling**.

1. Revisions by Reason Reasons that give rise to revisions to time series data can be broken down into four main categories.

(a) Incorporation of better data sources:

- incorporation of source data with more complete or otherwise better reporting;
- incorporation of source data that more closely match the concepts;
- replacement of judgment or values derived largely by statistical techniques with indicators from available data sources.

(b) Capturing the routine recalculation:

- incorporation of updated seasonal factors;
- updating of the base period.

¹Detailed presentations of the SUTs are included in Chapter 10: *Supply and Use Tables*, of the handbook *Building the System of National Accounts*.

(c) *Reflection of the improvements in methodology:*

- changes in statistical methods;
- changes in concepts, definitions and classifications.

(d) *Error corrections* that may occur in source data and computations.

2. **Revisions by Scheduling** , also called **expected revisions** , can be further subdivided, depending on their frequency, into the following groups.

(a) *Routine revisions* —characterised by their high periodicity and regularity—, which affect the current weekly, monthly or quarterly data. These revisions depend on the statistical characteristics of the estimation techniques adopted by the NSIs, the revisions of the basic statistics used to compile quarterly figures, or on errors made by national accountants. The reasons for routine revisions may include the following.

- Timeliness.
- Quarterly data are revised in line with the annual estimates. This introduces a new annual benchmark, not only for the intra-annual quarters, but also for any subsequent quarter.
- 'Annual benchmark' revision when the annual estimates are revised after data for all the months or quarters of a year become available, and whenever more detailed annual surveys become available.
- Seasonal and calendar adjustment.

(b) *Major revisions* are changes in the published data, often substantial, which happen when:

- a new structural source that is only collected at long intervals (5 to 10 years), such as a census or input-output tables, becomes available;
- a new methodology is developed, such as the 2008 SNA, which incorporates new concepts to be integrated in the current estimates;
- a new legal act is brought into force, such as a new classification by industry or products, or a new international national accounts methodology (e.g. the 2008 SNA).

(c) *Ad hoc revisions* are revisions that are non-scheduled and are unannounced in advance because they are a result of unforeseeable events, such as errors or accidents, or depend on the lack of a scheduling procedure. Non-scheduled revisions are not pre-announced or reflected in dissemination plans, and they can confuse users and undermine confidence in the quality of statistics. National accountants should strive to avoid ad hoc revisions at all costs.

	2001	2002	2003	2004	2005	2006	2007	2008
Resources								
Value added market producers and producers of own final use	0,5	-0,3	0,4	-0,1	-0,1	0,2	0,2	0,6
Value added central government and social authorities	0,0	0,5	0,3	0,1	-3,5	1,0	0,0	-1,7
Value added local authorities	0,1	-0,1	-1,4	-0,9	-0,4	-0,4	-0,2	-2,1
Value added NPISH	-2,0	0,8	-0,2	1,0	0,6	-0,6	0,6	1,0
Imports of goods and services	0,4	-2,9	-2,8	-1,5	-1,1	0,9	0,3	1,4
Uses								
Household consumption	0,9	1,0	0,6	0,3	-0,3	0,0	-0,2	0,0
General government consumption	1,2	-0,2	-0,7	0,1	-0,2	-0,7	0,0	-1,6
Gross fixed capital formation	-0,3	-4,2	-0,8	-1,1	1,8	0,0	-0,6	-0,3
Changes in inventories	0,4	-0,2	0,0	0,6	-0,2	0,6	0,3	0,2
Exports goods and services	-1,4	-1,4	-1,8	-3,2	-1,1	0,5	0,4	1,3
GDP	0,4	-0,1	0,2	-0,2	-0,1	0,2	0,1	0,0

Note: positive numbers mean that the First Report overestimated the development and negative numbers mean that the First Report underestimated the development.

Figure 13: Difference between first release and subsequent estimates - Swedish example - Source: Quarterly National Accounts Inventory, Sweden (September 2010)

Major revisions affect a large part of the time series, and sometimes even the complete time series. Usually, the data producers take the opportunity of a forthcoming major revision to introduce methodological improvements, which is good practice because it helps prevent revisions from occurring too often. Therefore, it is common for major revisions to be determined by a combination of factors, rather than one single cause. They are expected and planned well in advance, based on a detailed strategy. The policy for major revisions usually takes into account the following:

1. pre-announcing to users the implementation of a major revision, its calendar and the date of dissemination of the new estimates, and the reasons for doing it;
2. communicating and explaining the elements of the revision in advance, as well as the causes of the revisions;
3. informing the users about the expected magnitude, scope, length and impact.

When considering a revision, it is essential to distinguish between **revision analysis** and **revision policy**. The main purpose of revision analysis is to identify and adjust for any possible bias in the data. Revision analysis is therefore concerned with data quality. Revision policy, on the other hand, is concerned with establishing an approach, possibly a common approach, for introducing revisions.

The purpose of **revision analysis** is to reduce revisions in the future by identifying and remedying any possible bias in the initial figures. In addition, it helps with quantifying the scope and nature of revisions so that users are aware of the quality of the data when using them.

Three key aspects are important for the evaluation of the impact of revisions on the overall data quality.

1	General policy on data revisions	Each statistical institution within the ESS defines and disseminates a general policy on data revisions applicable to all statistics under its responsibility.
2	Specific revision policies for each statistical domain	For each statistical domain a specific revisions policy compliant with the general policy should be drawn up and implemented by each statistical institution.
3	Documentation and communication of revisions	The general revisions policy as well as the domain specific ones should be documented, publicly available, easily accessible and presented in a form that facilitates proper interpretation by the general public.
4	Consistency and stability of specific revision policies over time and across domain	As far as possible, revision policies should be kept consistent across statistical domains and countries. They also should be kept stable over a sufficiently long time period.

Figure 14: Main pillars of the revision policy - Source: A proposal for a revision policy of principal European economic indicators (PEEIs), by Gian Luigi Mazzi and Rosa Ruggeri Cannata, European Commission, Eurostat, June 2008.

1. *Accuracy* is the proximity of an estimate to its notional true value. An assessment of how accurate the estimates are may involve: analysis of data, analysis of methodology and analysis of the information gained from data confrontation within SUTs. After completing this process, analysts rank the accuracy of the estimates, disseminating this ranking to users.
2. *Reliability* is the extent to which estimates are revised. Consequently, the more the estimates are revised, the less reliable they are. Unlike accuracy, reliability is easily measured. This may be a measurement of the differences between the initial and final estimates of QNA. Initial estimates that are substantially revised are clearly inaccurate, given that the final estimates are the most accurate. In any event, care must be taken with estimates that are highly reliable (e.g. they are subject to few revisions), because they are not necessarily accurate; it may be that initial estimates are highly inaccurate and remain so.
3. *Stability of the estimates* means frequency of revisions, or the number of revisions within a given unit of time. Users appreciate stability in the data, but at the same time, they want the most accurate statistics possible. This means that national accountants have to strike a balance between making meaningful revisions when new or better data become available, and avoiding minor revisions of little consequence.

Two aspects are important when looking at user needs. First, users appreciate stability in the data. Second, users want the most accurate statistics available. Following these two requirements, two approaches are suitable for adoption in the revision analysis.

Reference Year	Time of publishing	Q1 Year T	Q2 Year T	Q3 Year T	Q4 Year T	Year T
T	End May	First				
T	Middle September	Revised	First			
T	End November	Revised	Revised	First		
T	End February	Revised	Revised	Revised	First	First sum of quarters
T+1	End May	Revised	Revised	Revised	Revised	Revised sum of quarters
T+1	Middle September					
T+1	End November	Revised	Revised	Revised	Revised	Preliminary annual national accounts
T+1	End February					
T+2	End May					
T+2	Middle September					
T+2	End November	Final	Final	Final	Final	Final annual national accounts
T+2	End February					

Figure 15: Revision policy of the Swedish National Accounts (GDP calculations) - Source: Quarterly National Accounts Inventory, Sweden (September 2010)

1. *Producer-oriented*: this approach means considering the revision process from the viewpoint of data producers, by:

- (a) assessing the accuracy of preliminary estimates in relation to final estimates;
- (b) improving methods of estimation used to compile preliminary figures.

2. *User-oriented*: this approach means analysing the effects that the revision process may have on users' perceptions of the economic conditions. It concentrates on the nature of the revision in order to verify if preliminary releases satisfy certain desirable features of rational forecasts.

An essential *tool* for revision analysis is a database used to archive data releases, so the revisions between any two releases for any common variables for any common period can be easily identified.

Revision policy consists of establishing a standardised, coordinated and publicised approach for introducing revisions. A basic principle is that the most accurate estimates, using the most up-to-date data source, should be published in every release, but it is advisable to avoid making minor revisions of little consequence. Revisions linked to other data sources used for QNA compilation should be coordinated across statistical domains (e.g. BoPs, Government Finance Statistics).

When considering the effects of revisions or when performing revision analysis, routine and annual revisions are often grouped together since it is somewhat difficult to quantify their effects separately. There are at least three ways in which the effects of routine and annual revisions may be considered from a policy point of view.

1. Each revision will cause data users to revise existing interpretations of the indicator, and hence possibly change economic forecasts and policy implications. When revision processes are appropriately and clearly documented in a standard form, and are widely disseminated (e.g. via websites), users will be able to qualify their interpretations according to the potential revisions of current and recent observations.
2. The statistical properties of the revision process can give users information about the expected reliability of existing and future values, and hence advise as to the degree of confidence that they may attribute to existing interpretations of the indicator.
3. The statistical properties of the revision process may be used by data producers to monitor the quality of the data production process. In particular, the existence of any revision may indicate some bias in the production of the first estimates. This could be a sign that the production process is in need of further improvement.

Major revisions have an extensive, sometimes even disruptive, effect, especially when they are associated with changes in statistical methods and in concepts, definitions or classifications.

Dissemination and publication

The dissemination of QNA is similar to the dissemination of annual national accounts and other statistics, and general guidance is available from the IMF's SDDS and GDDS. These standards focus on integrity and other aspects such as avoiding non-statistical interference with the data, simultaneous release to all users, general accessibility of the data and transparency.

NEWS RELEASE

15 May 2013

GDP decrease deepened in q1 2013

GDP preliminary estimate – the first quarter of 2013

In the Q1 2013 the gross domestic product adjusted for price, seasonal, and calendar effects decreased by 1.9%, year-on-year, and by 0.8%, quarter-on-quarter, according to the preliminary estimate.

In the Q1 2013 the gross domestic product (GDP) adjusted for price effects and seasonally adjusted * decreased by 1.9%, y-o-y, and by 0.8%, q-o-q, according to the preliminary estimate. From currently available partial statistical and administrative data sources it results that the deepening y-o-y and q-o-q GDP decrease was contributed to by basic demand and offer aggregates in a markedly differentiated way.

Demand components

The development of final consumption expenditure of households, general government, and non-profit institutions serving households in the last quarter was no longer the main cause of the economic recession. Low inflation supported stabilisation of demand of households especially for non-durable consumer goods. Fixed capital formation is affected for a long-term by decreasing willingness of enterprises and general government to invest mainly to dwellings and other buildings and structures. Important turnaround occurred during last months in the external trade development and its contribution to the GDP formation. Decreasing external demand due to overall economic recession is gradually reflected in export opportunities of the domestic economy. After three years of growth, domestic export dropped in the last quarter and external trade was no longer a source of the GDP growth.

Structure of the supply

Drop of external demand was reflected mainly in decreased gross value added formation of industries oriented on export, among the most affected was production of transport equipment. Decreasing investment activity caused further fall of construction. Year-on-year and especially quarter-on-quarter GDP development were negatively influenced by imbalanced collection of some taxes on products. Marked stocking up on tobacco products and related to that high collection of the relevant excise tax in the Q4 2012 were the reasons why the income from the tax was deeply under the average in the Q1 2013.

Next News Release will be published on: 4 June 2013 (national accounts for the Q1 2013)

* Unless otherwise stated, all data presented in this News Release are adjusted for price, seasonal, and calendar effects.

Figure 16: Example of first press-release on QNA

The section entitled, *Phase D: Dissemination*, in Chapter 2 of *Building the System of National Accounts* presents the dissemination policy for national accounts.

Taking into account the nature of QNA and their importance for decision-taking, the predominant condition is that the dissemination of the data should be swift. Rather than spending time on preparing and printing a glossy, comprehensive publication, the emphasis should be on releasing the quarterly data as soon as they are available, according to a release calendar available to users. The first release is usually rather limited, focusing on the most important data, which could be the growth rate of GDP and its value in current and constant prices, both seasonally adjusted and non-seasonally adjusted. As a further extension, a second release may include production and expenditure approach breakdowns.

The ways to disseminate quarterly data is through a press release and via the Internet (i.e. on the statistics office's website). The press release text should be concise (as a rule, no longer than one typed page) and ready for use without rewriting. It is advisable to support the press release with a small table containing the most important data, ideally consisting of content that has been discussed and agreed on with the users.

Later, when more data are available and the estimation of quarterly accounts improves, the QNA can begin to appear in more comprehensive statistical publications. These publications will provide a more thorough analysis of the data, supported by charts depicting the economic developments in a range of ways.

Concluding remarks

The introduction of QNA in statistical practice is part of the 2008 SNA implementation strategy. The need for the type of information provided through QNA may be equally urgent in developing countries as in developed nations, although more efforts are necessary in developing countries to convince users of the importance of the data, and inform them about the limitations of QNA.

The section entitled, *The 2008 SNA implementation strategy*, in Chapter 2 of *Building the System of National Accounts* presents the phases and the main steps of this process.

Figure 17 presents the minimum data set needed for the estimation of QGDP to an acceptable standard. The precise specification of desirable data depends on the economic structure in the country and the importance of various components in the accounts. For instance, if agriculture has a very small contribution to GDP, its compilation may be based on a smaller amount of quarterly information than for a country where the agriculture contribution is significant (i.e. 10–12%).

1. *Quarterly household budget surveys*
2. *Business surveys:*
 - (a) sales/turnover
 - (b) purchases
 - (c) gross fixed capital formation by principal asset type
 - (d) inventories
 - (e) compensation of employees
 - (f) employment
 - (g) sectorial and industry breakdown.
3. *Government spending and receipts:*
 - (a) data to compile the accounts with respect to the general government sector
 - (b) data needed to split government final consumption expenditure into its collective and individual components
 - (c) current taxes on income and wealth
 - (d) taxes and subsidies on products, and production and imports
 - (e) social benefits payable to households.
4. *Balance of payments and international investment position*
5. *Price indices:*
 - (a) consumer price indices
 - (b) producer price indices for goods (including agriculture)
 - (c) producer price indices for services
 - (d) export and import prices for goods.

Figure 17: Ideal data requirement for QGDP compilation - Source: Handbook on quarterly national accounts, Eurostat, European Commission, 2013, and author's own contribution

Statistical processing for quarterly data demands data gathering, benchmarking, deflating, seasonal adjustment, aggregation and other calculations. In designing a processing system, it is useful to anticipate the differences and links between the preparatory and operational phases of quarterly national accounts compilation so that the full range of user needs are satisfied. In the preparatory phase, the objective is to compile the data on past years (back series), whereas in the operational phase, the objectives are to update the time series with data for the current quarters and to revise the data for past years based on annual results.

The management of QNA differs from that of annual accounts due to the greater intensity of work and tightness of deadlines. This means that the main problem for QNA is timeliness: their compilation is particularly vulnerable to problems like delays in major data inputs or bugs in computing systems. To deal with such problems, compilers should draw up and follow an efficient work schedule that includes the expected time of arrival of each of the data sources, the period required to carry out each process, and the flow of data from one stage to the next.

At the same time, the compilation of QNA is more 'creative' than the compilation of annual NA, because more assumptions and indirect indicators are used. This implies a need for staff with a solid economic background and strong mathematical skills. A good work plan also covers staff organisation, and allocation of personnel between quarterly and annual activities. Obviously, a smaller number of staff may result in a much more basic quality of estimation, and a lower level of detail and timeliness.

An important organisational choice relates to whether there should be a unit specifically focused on QNA or whether the same unit that works on annual national accounts should compile the QNA. The cycle of peaks in workload is quite different, so peaks in the annual compilation may not crowd out activities in QNA (and vice versa). An advantage of combining both functions is that harmonisation between quarterly and annual accounts is more likely if the same personnel is working on both. Nevertheless, the best choice when setting up the QNA compilation system is to identify a separate team, even if this requires a high level of conceptual ability, and a staff with a good knowledge of national accounts methodology and the annual compilation system.

Another important aspect to organise following the implementation of quarterly accounts is the process of maintaining their compilation. The work plan should take into account the main steps of this process (see Figure 18) in order to ensure the sustained quality of the data over time.

1. Revise the quarterly estimates for the current year when new quarterly data become available:
 - (a) link monthly and quarterly source data for the current quarters with estimates for the back series;
 - (b) extrapolation with indicators: benchmark the time series of quarterly source data to the time.
2. Revise the quarterly estimates when new annual data become available:
 - (a) revise the quarterly estimates for year y (and preceding years) to incorporate new benchmarking data without introducing steps in the series;
 - (b) benchmark the time series of quarterly source data to the new series of annual data;
 - (c) revise at the most detailed compilation level.
3. Update the quarterly time series with estimates for the next current year (year y+1):
 - (a) compile quarterly estimates for year y+1 by linking monthly and quarterly source data for the quarters of year y+1 with the revised and benchmarked QNA estimates for year 1 to year y;
 - (b) extrapolation with indicators: benchmark the time series of quarterly source data to the time series of annual data;
 - (c) update at the most detailed compilation level.

Figure 18: Main steps to maintain quarterly national accounts - Source: Quarterly National Accounts Manual- Concepts, Data Sources, and Compilation, by Adriaan M. Bloem, Robert J. Dippelsman, and Nils Ø. Mæhle, IMF, 2001

In the initial stage of QNA implementation, only the estimates of GDP with corresponding components from the production or expenditure side may be produced. With time, it is useful and necessary to revisit the coverage of the QNA in view of changes in the availability of source data and changes in the coverage of annual accounts. The users' need for additional data guides future extension of the statistical system. Once QNA are well established, users will begin to make more sophisticated requests, and will step up their interest in quarterly supply and use reconciliation, institutional sector accounts and balance sheets.

Questions to practitioners

1. What is the current stage of QNA estimation in your country? Are QNA currently being implemented? If not, are there plans for their implementation? What are the main problems you currently face as regards QNA estimation?
2. What are the available quarterly data sources in your country and what is their role in QNA compilation?
3. To what extent are administrative data used in the compilation process? Do they meet the methodological requirements of national accounts or are adjustments necessary?
4. What is the quality of the QNA? How big are the differences with annual estimates?
5. Is a strategy for QNA revision in place and agreed on with users? What is the magnitude of the revisions?

See also

- [Building the System of National Accounts](#) (online publication, overview of all articles)

Dedicated section

- [International statistical cooperation](#)

Publications

- [Benchmarking a system of time series: Denton's movement preservation principle vs a data based procedure](#), 2005
- [ESS guidelines on revision policy for PEEIs - 2013 edition](#)
- [Essential SNA - Building the basics - 2014 edition](#)
- [Handbook on quarterly national accounts - 2013 edition](#)
- [The use of benchmarking techniques in the compilation of the European quarterly national accounts: situation and perspectives](#) - Roberto Barcellan (Eurostat, 2005) - Paper presented at the OECD-Eurostat Workshop on Frontiers in Benchmarking Techniques and their Application to Official Statistics

Legislation

- [Regulation 549/2013](#) of 21 May 2013 on the European system of national and regional accounts in the European Union (European System of Accounts, ESA 2010), Chapter 12: Quarterly National Accounts
- [Summaries of EU Legislation: European Union system of national and regional accounts](#)

External links

- [Agriculture in Quarterly National Accounts: Allocation of output to non-harvest quarters](#) , Adriaan M. Bloem , STD/NA 97(3)
- [Backward recalculation of seasonal series affected by economic crisis: a Model-Based-Link method for the case of Turkish GDP](#) , Dario Buono and Kocak Alpay (Eurostat) 15 October 2010, MPRA Paper No. 40243, posted 24. July 2012 12:45 UTC
- [Practical Guide to seasonal adjustment with Demetra+, From source series to user communication](#) , UN, 2012
- [Quarterly National Accounts Manual – concepts, data sources, and compilation](#) , Adriaan M. Bloem, Robert J. Dippelsman, Nils Maehle – International Monetary Fund, Washington DC, 2001
- [Quarterly national accounts: Sources and methods used by OECD member countries](#) , OECD, 2001