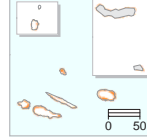


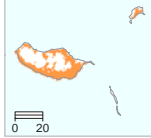
Population density in Europe  
(inhabitants per km<sup>2</sup>)

- Not inhabited
- 1 - 4
- 5 - 19
- 20 - 199
- 200 - 499
- 500 - 5000
- >5000
- Data not available

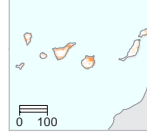
Açores (PT)



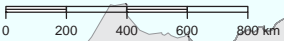
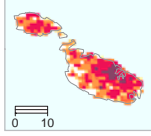
Madeira (PT)



Canarias (ES)



Malta



Administrative boundaries: © EuroGeographics © UN-FAO