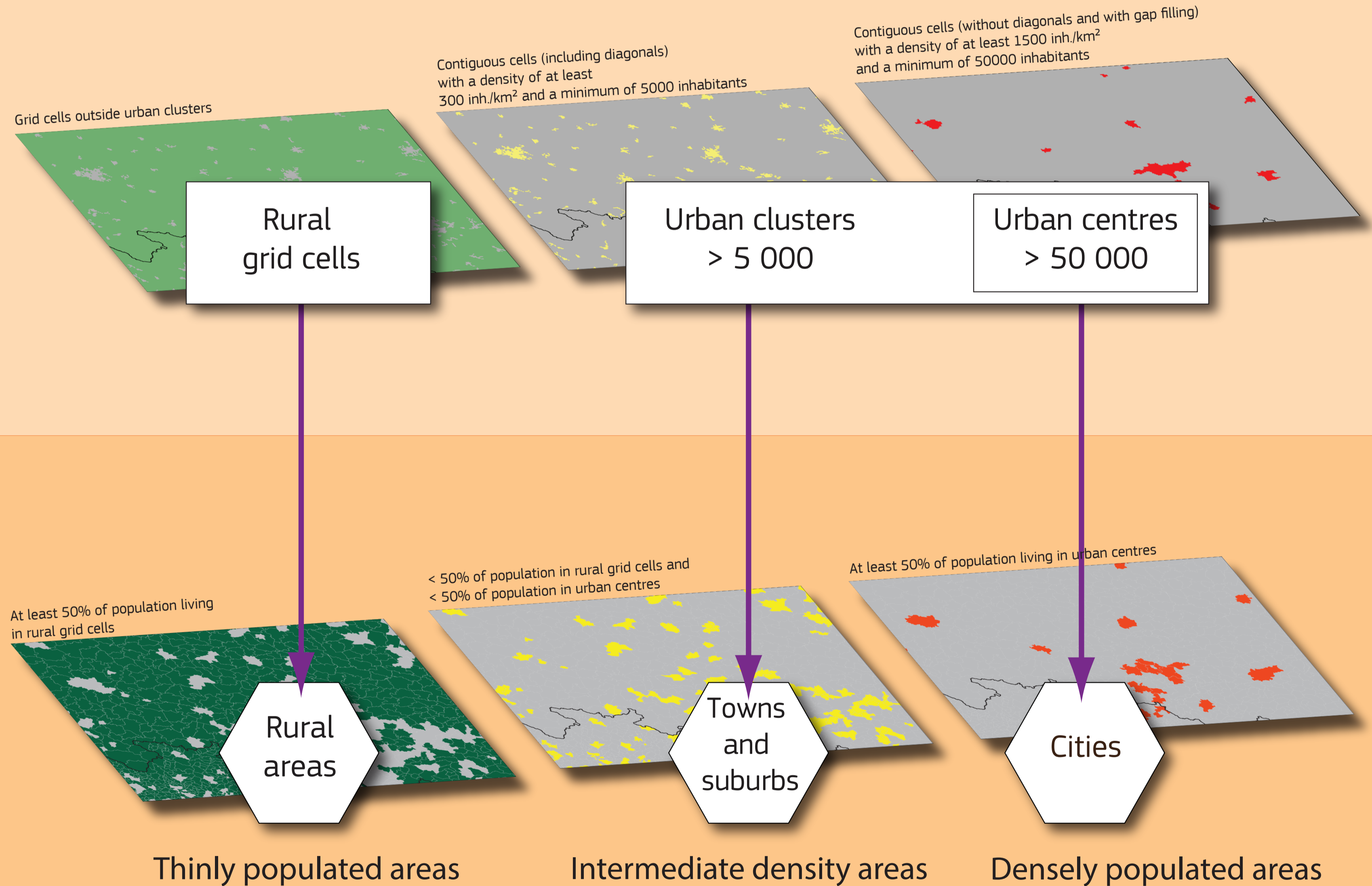
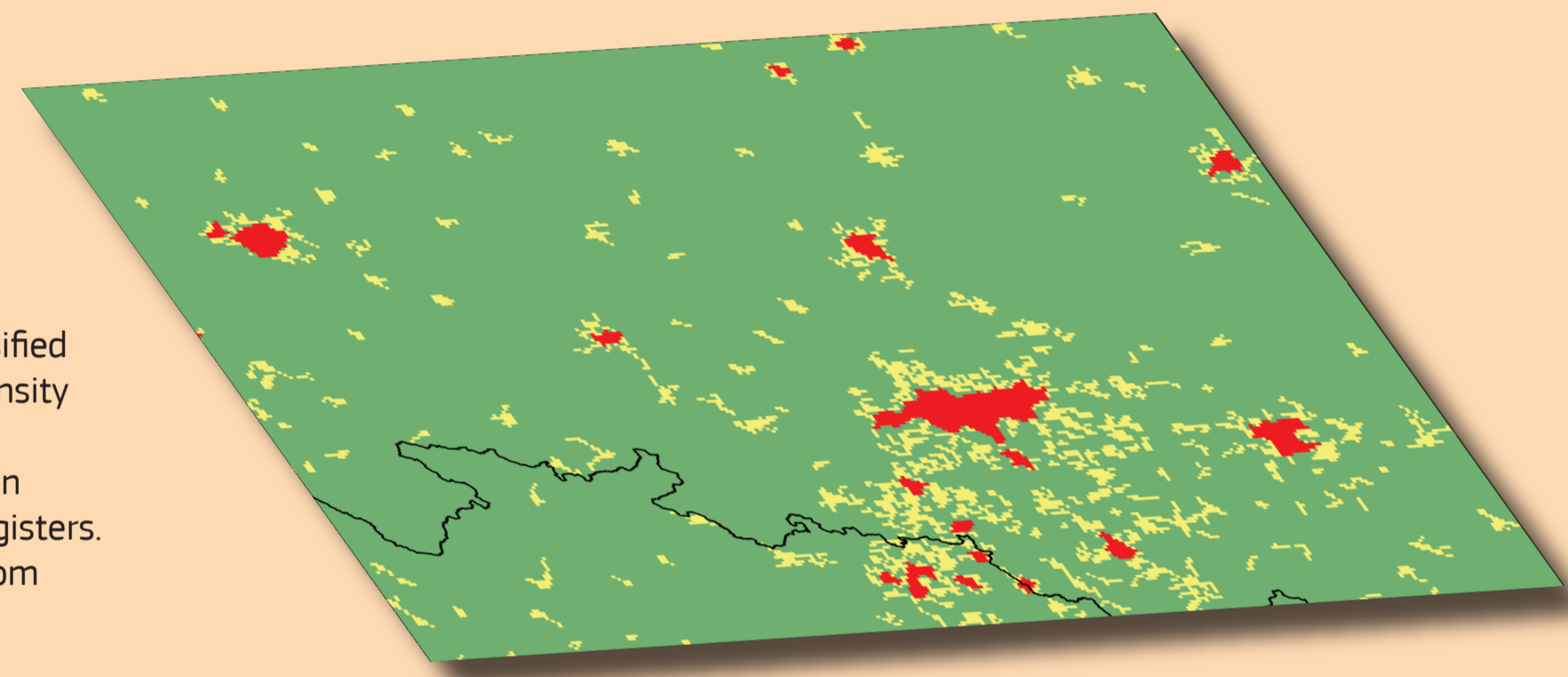


Degree of urbanisation

A classification of local administrative units

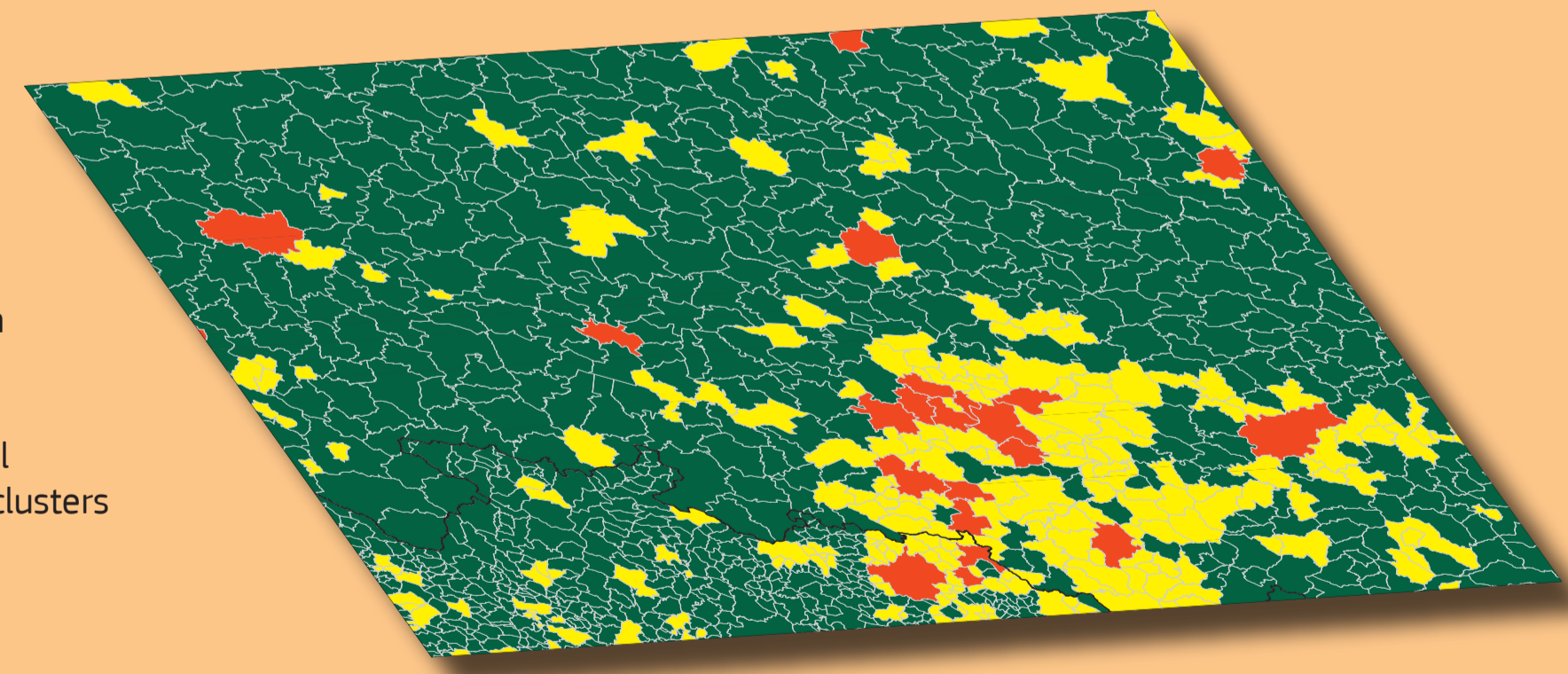
Grid cells

Raster cells of 1 km² are classified using criteria of population density and contiguity. Where available, the population distribution is derived from registers. Elsewhere, it is downscaled from local (LAU) population figures.



LAU units

The degree of urbanisation is a classification of local administrative units (LAU) based on the share of local population living in urban clusters and in urban centres.



This typology has been developed by DG Regional and Urban Policy in co-operation with DG Agriculture and Rural Development, Eurostat, DG Joint Research Centre and OECD.

Data sources: Eurostat, DG JRC, national statistical institutes

For more information:

Degree of urbanisation classification:
http://ec.europa.eu/eurostat/statistics-explained/index.php?title=Degree_of_urbanisation_classification_-_2011_revision

Correspondence table of LAU:
http://ec.europa.eu/eurostat/ramon/miscellaneous/index.cfm?TargetUrl=DSP_DEGURBA