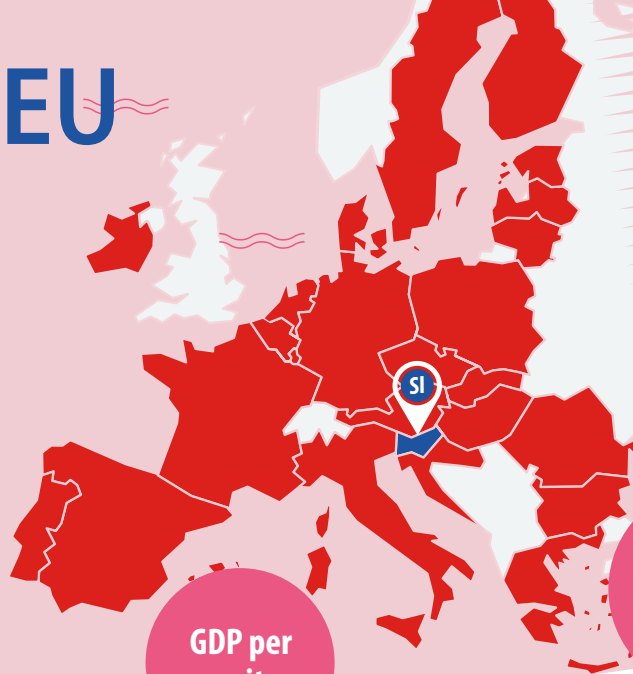


# Slovenia in the EU



Share in  
EU area

**0.5%**  
20 300 km<sup>2</sup>

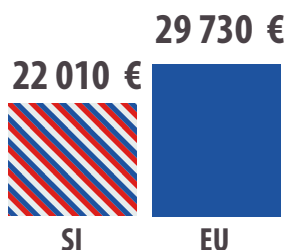
Share  
in EU  
population

**0.5%**  
2.1 million inhabitants

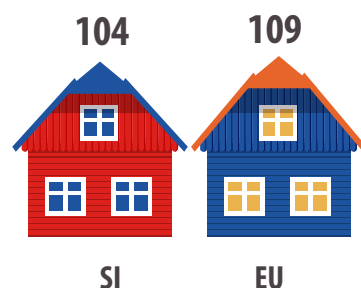
Share in  
EU GDP

**0.3%**

GDP per  
capita



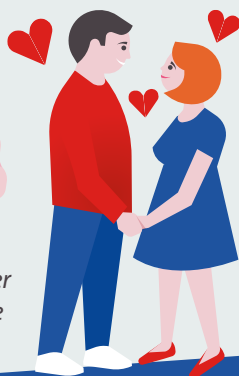
Population  
density  
(per km<sup>2</sup>)



Did  
you know  
that...

**26% of people** in Slovenia **use smart watches** or other smart wearables, one of the largest shares in the EU

People in Slovenia are the **most satisfied** with their **personal relationships** in the EU



**66% of the population** in Slovenia live in **detached houses**, the second-highest share in the EU

**40% of managers** in Slovenia **are women**, one of the highest shares in the EU Member States.

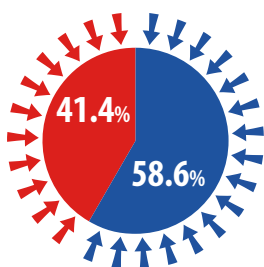
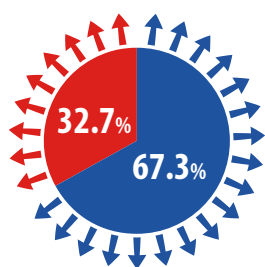


**Over half of the land area** in Slovenia is **covered with forests (61%)**, the third largest share in the EU



Exports of goods

Imports of goods



● Inside EU  
● Outside EU

Employment rate, men

**78.6%** **78.1%**



SI

EU

Employment rate, women

**72.4%** **66.8%**



SI

EU

# Slovenia in the EU

On the occasion of Slovenia's Presidency of the Council of the European Union (from 1<sup>st</sup> July 2021), Eurostat, the statistical office of the European Union, releases some indicators and infographics to show Slovenia in comparison with the European Union

## July 2021

Indicator	Slovenia	EU
<b>Economy</b>		
Government surplus/deficit (% of GDP)	-8.4	-6.9
Government gross debt (% of GDP)	80.8	90.7
GDP per capita in PPS (EU = 100)	89	100
Tax to GDP ratio	37.7	41.1
Annual average inflation rate (HICP)	-0.3	0.7
Investment (gross fixed capital formation as % of GDP)	19.9	21.6
Weight of manufacturing in the economy (value added of manufacturing as % of GDP)	20.5	14.5
<b>Population and social conditions</b>		
Share of population aged 65 or over (%)	20.2	20.6
Share of population under 15 (%)	15.1	15.1
Fertility rate (children per woman)	1.61	1.53
Unemployment rate (total)	5.0	7.0
Unemployment rate (less than 25 years)	14.2	16.8
Risk-of-poverty or social exclusion (% of population)	14.4	20.9
<b>Education</b>		
Tertiary educational attainment total (% of persons aged 30-34)	46.9	41.0
Tertiary educational attainment women (% of persons aged 30-34)	59.1	46.1
Tertiary educational attainment men (% of persons aged 30-34)	36.8	36.0
Early leavers from education (% of persons aged 18-24 years)	4.1	9.9
<b>Science and Technology</b>		
R&D expenditure (% of GDP)	2.04	2.20
Individuals having made a purchase online (% of persons aged 16 to 74)	72	73
Employment in high- and medium-high technology manufacturing (%)	10.4	6.2
<b>Environment &amp; Energy</b>		
Greenhouse gas emissions including international aviation and indirect CO <sub>2</sub> emissions (% reduction since 1990) – Source: EEA	-8.0	-24.0
Share of renewables in final energy consumption (%)	22.0	19.7
Energy dependency (share of imports in energy consumption)	52.1	60.7

based on annual data available on 22 June 2021

[ec.europa.eu/eurostat](https://ec.europa.eu/eurostat)

[@EU\\_Eurostat](https://twitter.com/EU_Eurostat)

[@EurostatStatistics](https://www.facebook.com/EurostatStatistics)

[@EU\\_Eurostat](https://www.instagram.com/EU_Eurostat)

