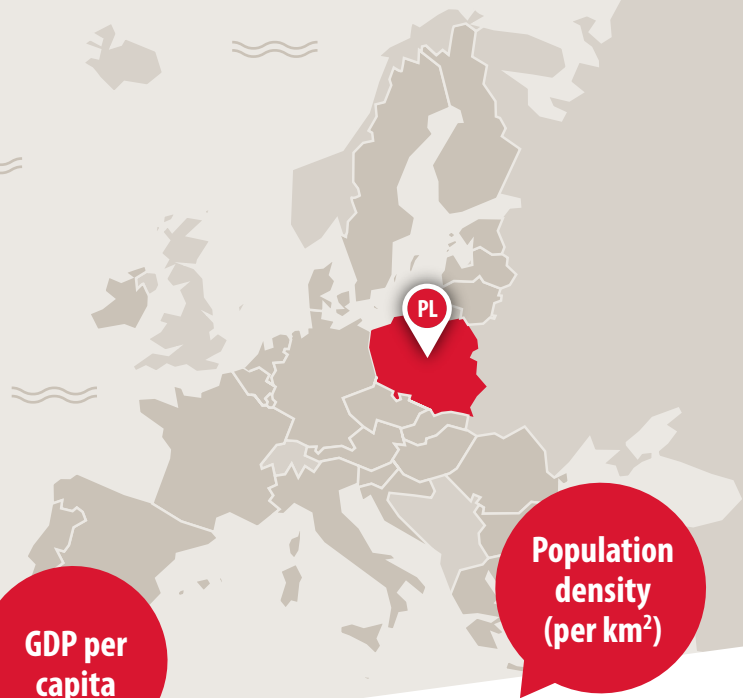


# Poland in the EU



Share in  
EU area

**7.4%**  
311 928 km<sup>2</sup>

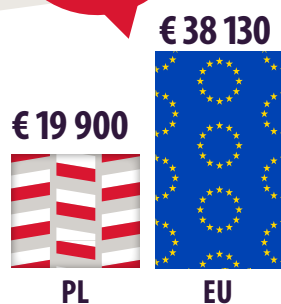
Share  
in EU  
population

**8.2%**  
36.6 million inhabitants

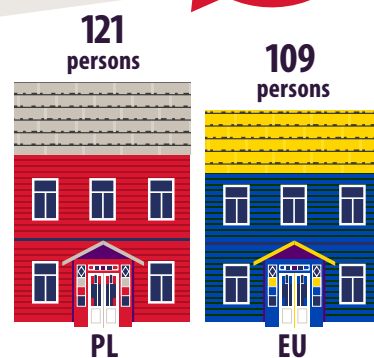
Share in  
EU GDP

**4.4%**

GDP per  
capita



Population  
density  
(per km<sup>2</sup>)



Did  
you know  
that ...



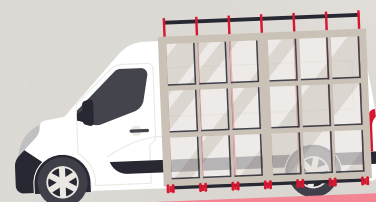
Poland is **the largest EU exporter of candles**

Poland is the **top producer of raspberries, apples and cherries** in the EU



**48% of managers in Poland are women**, the 3rd highest share in the EU

Poland is the **largest EU exporter of wooden windows**



Employment rate,  
women

**72.0%** **70.2%**

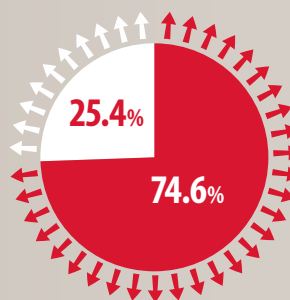


Employment rate,  
men

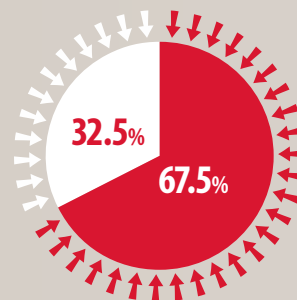
**83.8%** **80.4%**



Exports of goods



Imports of goods



● Inside EU ● Outside EU

# Poland in the EU

On the occasion of Poland's Presidency of the Council of the European Union (from 1st January 2025), Eurostat, the statistical office of the European Union, releases some indicators and infographics to show Poland in comparison with the European Union.

JANUARY 2025

ECONOMY	Poland	EU
Government surplus/deficit (% of GDP)	-5.3	-3.5
Government gross debt (% of GDP)	49.7	80.8
GDP per capita in PPS (EU = 100)	80.0	100.0
Tax to GDP ratio	36.0	40.0
Annual average inflation rate (HICP)	10.9	6.4
Investment (gross fixed capital formation as % of GDP)	17.7	22.0
Weight of manufacturing in the economy (value added of manufacturing as % of GDP)	16.8	14.7
POPULATION AND SOCIAL CONDITIONS		
Share of population aged 65 or over (%)	19.9	21.3
Share of population under 15 (%)	15.4	14.9
Fertility rate (children per woman)	1.29	1.46
Unemployment rate (total)	2.8	6.1
Unemployment rate (less than 25 years)	11.4	14.5
Risk of poverty or social exclusion (% of population)	16.3	21.3
EDUCATION		
Tertiary educational attainment total (% of persons aged 30-34)	49.2	43.9
Tertiary educational attainment women (% of persons aged 30-34)	59.6	49.4
Tertiary educational attainment men (% of persons aged 30-34)	39.4	38.5
Early leavers from education (% of persons aged 18-24)	3.7	9.5
SCIENCE AND TECHNOLOGY		
R&D expenditure (% of GDP)	1.45	2.27
Employment in high- and medium high-technology manufacturing (%)	5.3	6.0
ENVIRONMENT AND ENERGY		
Greenhouse gas emissions including international aviation and indirect CO <sub>2</sub> emissions (% reduction since 1990) – Source: EEA	-22.4	-31.0
Share of renewables in final energy consumption	16.9	23.1
Energy dependency (share of imports in energy consumption)	46.0	62.5

Based on data available on 2 December 2024

[ec.europa.eu/eurostat](https://ec.europa.eu/eurostat)

 @EU\_Eurostat

 EurostatStatistics

 @EU\_Eurostat

 Eurostat

