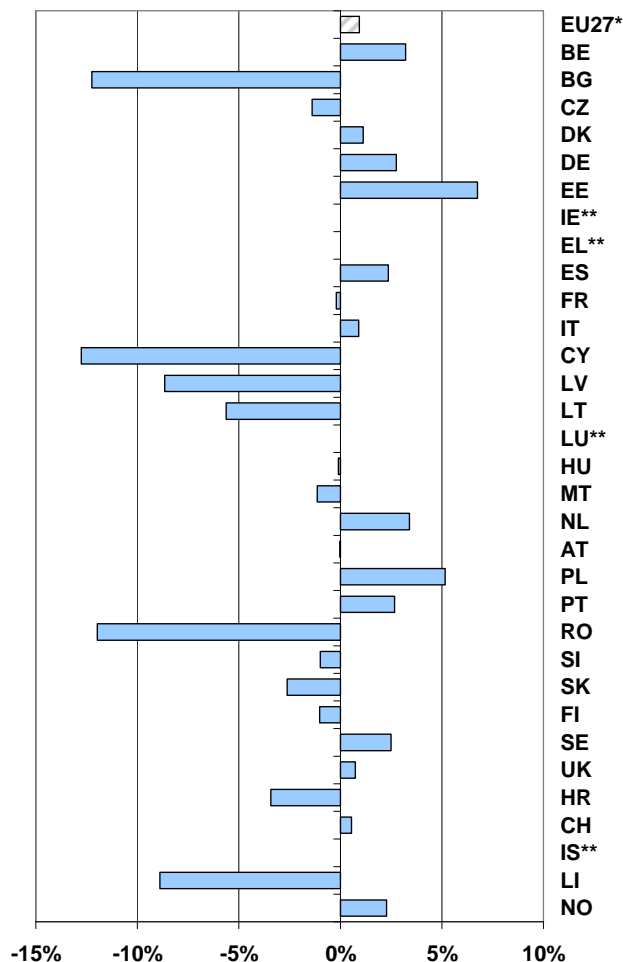


Winter season tourism trends 2009/2010

In terms of nights spent in hotels and similar establishments, tourism in the European Union increased by 0.9% or 5.1 million nights spent during the 2009-2010 winter season¹ compared to the same period in 2008-2009.

Figure 1: Percentage change in number of nights spent in hotels and similar establishments, non-residents and residents, November 2009 - April 2010 compared with the same period in 2008-2009



(*) EU27 aggregate for 2009-2010 based on estimations for Ireland, Greece and Luxembourg.

(**) Ireland, Greece, Luxembourg and Iceland: not enough data available for 2009-2010.

Source: Eurostat ([tour_occ_nim](#))

¹ The winter season runs from November to April of the following year. For example, the 2009-2010 winter season ran from November 2009 to April 2010.

In the winter season 2009-2010 the increase of the number of nights spent in hotels and similar establishments was mainly due to people travelling inside their own country of residence (+1.8%) while the number of nights spent by non-residents remained almost stable (-0.3%).

Table 1: Nights spent in hotels and similar establishments, non-residents and residents, November 2009 - April 2010 compared with November 2008 - April 2009

('000)	Winter season 2008-2009				Winter season 2009-2010				2009-10 / 2008-9 change (in %)		
	Total	of which:		Non-residents as % of Total	Total	of which:		Non-residents as % of Total	Total	of which:	
		Non-residents	Residents			Non-residents	Residents			Non-residents	Residents
EU27*	549 383	229 444	319 940	41.8%	554 493	228 848	325 644	41.3%	0.9%	-0.3%	1.8%
BE	6 896	4 629	2 266	67.1%	7 117	4 598	2 519	64.6%	3.2%	-0.7%	11.1%
BG	3 147	1 184	1 963	37.6%	2 762	1 169	1 593	42.3%	-12.2%	-1.3%	-18.8%
CZ	10 666	6 764	3 902	63.4%	10 518	6 717	3 801	63.9%	-1.4%	-0.7%	-2.6%
DK	3 795	1 387	2 408	36.5%	3 837	1 463	2 374	38.1%	1.1%	5.5%	-1.4%
DE	85 760	17 532	68 228	20.4%	88 120	18 770	69 349	21.3%	2.8%	7.1%	1.6%
EE	1 367	914	453	66.9%	1 459	1 016	443	69.6%	6.8%	11.2%	-2.2%
IE**	9 183	5 596	3 587	60.9%	:	:	:	:	:	:	:
EL**	8 795	3 080	5 715	35.0%	:	:	:	:	:	:	:
ES	84 597	44 228	40 369	52.3%	86 591	44 900	41 691	51.9%	2.4%	1.5%	3.3%
FR	77 994	23 551	54 443	30.2%	77 834	22 738	55 097	29.2%	-0.2%	-3.5%	1.2%
IT	74 314	32 751	41 563	44.1%	74 985	32 567	42 417	43.4%	0.9%	-0.6%	2.1%
CY	3 085	2 752	334	89.2%	2 692	2 363	328	87.8%	-12.8%	-14.1%	-1.6%
LV	905	603	302	66.7%	827	565	262	68.3%	-8.7%	-6.4%	-13.2%
LT	812	447	365	55.1%	767	439	328	57.2%	-5.6%	-1.9%	-10.2%
LU**	546	508	38	93.1%	:	:	:	:	:	:	:
HU	5 543	2 785	2 758	50.2%	5 537	2 865	2 672	51.7%	-0.1%	2.9%	-3.1%
MT	2 401	2 235	166	93.1%	2 373	2 205	168	92.9%	-1.1%	-1.4%	1.7%
NL	13 411	6 097	7 314	45.5%	13 866	6 585	7 282	47.5%	3.4%	8.0%	-0.4%
AT	40 296	30 478	9 818	75.6%	40 289	30 174	10 114	74.9%	0.0%	-1.0%	3.0%
PL	10 082	2 706	7 376	26.8%	10 601	2 809	7 793	26.5%	5.1%	3.8%	5.6%
PT	12 926	8 251	4 674	63.8%	13 270	8 142	5 128	61.4%	2.7%	-1.3%	9.7%
RO	5 546	1 026	4 520	18.5%	4 881	958	3 923	19.6%	-12.0%	-6.6%	-13.2%
SI	2 202	1 240	962	56.3%	2 180	1 262	918	57.9%	-1.0%	1.8%	-4.6%
SK	2 812	1 265	1 547	45.0%	2 738	1 237	1 502	45.2%	-2.6%	-2.2%	-2.9%
FI	6 921	2 055	4 866	29.7%	6 850	1 951	4 899	28.5%	-1.0%	-5.1%	0.7%
SE	10 315	2 016	8 299	19.5%	10 572	2 097	8 474	19.8%	2.5%	4.0%	2.1%
UK	65 067	23 363	41 704	35.9%	65 545	22 318	43 227	34.1%	0.7%	-4.5%	3.7%
HR	2 517	1 623	894	64.5%	2 431	1 636	795	67.3%	-3.4%	0.8%	-11.1%
CH	15 844	8 979	6 865	56.7%	15 930	8 952	6 978	56.2%	0.5%	-0.3%	1.6%
IS**	497	355	141	71.5%	:	:	:	:	:	:	:
LI	61	59	2	97.3%	55	54	1	98.0%	-8.9%	-8.3%	-31.8%
NO	7 134	1 455	5 679	20.4%	7 296	1 511	5 785	20.7%	2.3%	3.9%	1.9%

(*) EU27 aggregate for 2009-2010 based on estimations for Ireland, Greece and Luxembourg.

(**) Ireland, Greece, Luxembourg and Iceland: not enough data available for 2009-2010.

Source: Eurostat ([tour_occ_nim](#))

During the 2009-2010 winter season, net occupancy rates of bed places in the EU countries ranged from 14.5 in Bulgaria to 65.2 in Austria. Compared with the same months of the previous year, the season started in November with decreased occupancy rates in all Member States while it ended in April with the rates increasing or remaining at last year's level in most of the Member States.

Table 2: Net occupancy rates of bed places in hotels and similar establishments.

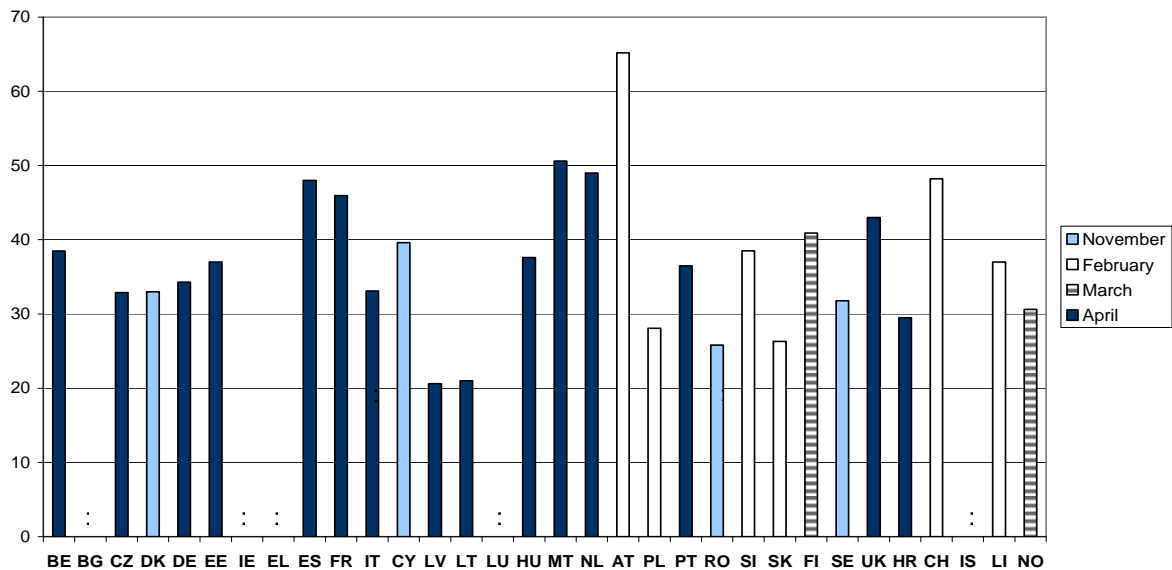
%	Winter season 2008-2009						Winter season 2009-2010						Change in percentage points					
	NOV	DEC	JAN	FEB	MAR	APR	NOV	DEC	JAN	FEB	MAR	APR	NOV	DEC	JAN	FEB	MAR	APR
EU27*	32.9	31.8	30.0	35.0	33.7	37.9	31.2	31.4	29.4	35.0	34.9	38.3	-1.8	-0.4	-0.6	0.0	1.1	0.4
BE	34.0	33.5	25.1	31.3	30.9	38.0	33.6	34.2	25.5	31.5	31.5	38.5	-0.4	0.7	0.4	0.2	0.6	0.5
BG**	17.6	17.6	17.0	17.0	17.0	23.4	14.5	14.5	15.7	15.7	15.7	:	-3.1	-3.1	-1.3	-1.3	-1.3	:
CZ	29.2	27.8	25.5	28.6	28.4	32.9	26.7	26.1	25.3	28.9	30.7	32.9	-2.5	-1.7	-0.2	0.3	2.3	0.0
DK	40.0	27.0	25.0	28.0	30.0	32.0	33.0	28.0	23.0	26.0	30.0	32.0	-7.0	1.0	-2.0	-2.0	0.0	0.0
DE	30.7	29.1	24.8	29.4	29.6	32.7	30.1	29.1	24.4	29.5	30.4	34.3	-0.6	0.0	-0.4	0.1	0.8	1.6
EE	32.0	30.0	25.0	27.0	26.0	32.0	28.0	29.0	27.0	28.0	29.0	37.0	-4.0	-1.0	2.0	1.0	3.0	5.0
IE	34.0	36.0	29.0	34.0	36.0	41.0	32.0	33.0	:	:	:	:	-2.0	-3.0	:	:	:	:
EL	29.5	28.4	22.5	25.9	27.8	27.3	26.6	27.5	25.0	27.7	:	:	-2.9	-0.9	2.5	1.8	:	:
ES	41.6	36.4	34.8	40.3	42.2	48.1	40.1	36.4	34.4	41.1	44.2	48.0	-1.5	0.0	-0.4	0.8	2.0	-0.1
FR	38.5	40.1	35.7	39.6	39.2	45.2	36.6	39.8	34.5	39.8	41.8	45.9	-1.9	-0.3	-1.2	0.2	2.6	0.7
IT	24.3	26.7	27.6	30.0	27.1	32.1	21.6	25.3	26.7	29.7	29.4	33.1	-2.7	-1.4	-0.9	-0.3	2.3	1.0
CY	42.8	30.1	26.8	32.0	38.5	44.1	39.6	26.3	17.1	20.3	25.2	30.2	-3.2	-3.8	-9.7	-11.7	-13.3	-13.9
LV	25.2	22.3	17.8	18.0	17.3	21.2	16.5	17.9	17.3	17.9	18.2	20.6	-8.7	-4.4	-0.5	-0.1	0.9	-0.6
LT	25.3	22.7	18.9	18.4	18.5	22.1	18.8	18.3	16.2	17.0	19.9	21.0	-6.5	-4.4	-2.7	-1.4	1.4	-1.1
LU	25.2	22.7	20.7	23.7	25.5	25.0	23.9	19.3	18.2	:	:	:	-1.3	-3.4	-2.5	:	:	:
HU	23.7	20.6	20.4	30.8	33.2	28.5	25.1	21.5	27.4	31.4	35.8	37.6	1.4	0.9	7.0	0.6	2.6	9.1
MT	39.6	30.2	31.8	39.2	38.7	48.2	38.0	30.0	31.6	39.3	42.8	50.6	-1.6	-0.2	-0.2	0.1	4.1	2.4
NL	41.2	35.4	31.5	35.6	36.5	47.8	39.3	34.1	30.1	35.8	37.9	49.0	-1.9	-1.3	-1.4	0.2	1.4	1.2
AT	23.7	41.4	53.9	64.4	43.8	33.2	23.2	40.7	55.0	65.2	41.2	29.9	-0.5	-0.7	1.1	0.8	-2.6	-3.3
PL	30.7	26.1	25.1	28.8	28.4	29.3	27.1	24.3	23.8	28.1	27.3	27.8	-3.6	-1.8	-1.3	-0.7	-1.1	-1.5
PT	28.1	22.8	21.8	26.6	29.6	37.4	26.9	22.7	21.5	27.2	30.6	36.5	-1.2	-0.1	-0.3	0.6	1.0	-0.9
RO	33.1	23.3	17.9	21.0	20.3	21.3	25.8	18.3	15.5	17.5	18.4	20.9	-7.3	-5.0	-2.4	-3.5	-1.9	-0.4
SI	36.9	33.4	35.4	38.7	34.1	38.3	30.8	30.1	34.5	38.5	32.8	35.7	-6.1	-3.3	-0.9	-0.2	-1.3	-2.6
SK	25.2	21.2	23.3	27.0	21.8	22.3	20.6	18.3	21.1	26.3	23.6	22.8	-4.6	-2.9	-2.2	-0.7	1.8	0.5
FI	34.6	33.6	34.9	38.1	37.3	34.3	31.1	32.2	32.8	38.1	40.9	36.1	-3.5	-1.4	-2.1	0.0	3.6	1.8
SE	32.6	26.9	25.4	29.9	30.9	29.5	31.8	28.0	24.4	30.1	31.1	30.6	-0.8	1.1	-1.0	0.2	0.2	1.1
UK	38.0	33.0	27.0	35.0	36.0	43.0	37.0	35.0	27.0	36.0	36.0	43.0	-1.0	2.0	0.0	1.0	0.0	0.0
HR	19.8	15.3	17.8	21.4	26.1	32.2	18.8	16.4	14.8	19.2	21.0	29.5	-1.0	1.1	-3.0	-2.2	-5.1	-2.7
CH	31.9	37.6	39.9	47.7	41.1	36.5	32.0	37.4	38.6	48.2	42.5	36.5	0.1	-0.2	-1.3	0.5	1.4	0.0
IS	25.4	19.9	16.8	23.3	24.2	28.1	22.3	17.6	:	:	:	:	-3.1	-2.3	:	:	:	:
LI	26.4	28.0	31.4	36.4	30.1	26.5	20.5	24.6	27.1	37.0	35.4	22.5	-5.9	-3.4	-4.3	0.6	5.3	-4.0
NO	33.3	25.7	28.4	33.6	33.6	28.5	30.2	24.8	25.9	29.4	30.6	30.3	-3.1	-0.9	-2.5	-4.2	-3.0	1.8

(*) EU27: estimated figures, calculated using estimated average monthly capacities for each Member State; not including BG, IE, EL and LU (due to incomplete data).

(**) BG: the figures are based on quarterly data.

Source: Eurostat ([tour_occ_ubnet](#))

Figure 2: Net occupancy rates of bed places in hotels and similar establishments in the peak month, winter season 2009-2010.



Source: Eurostat (tour_occ_ubnet)

Methodology

CONCEPTS AND DEFINITIONS

Net occupancy rate

The net occupancy rate of bed places in one month is obtained by dividing total overnight stays by the product of the bed places on offer and the number of days when the bed places are actually available for use (net of seasonal closures and other temporary closures for decoration, by police order, etc.) for the same group of establishments, multiplying the quotient by 100 to express the result as a percentage.

Hotels and similar establishments

Hotels, apartment hotels, motels, roadside inns, beach hotels and other similar establishments which provide hotel services including more than bed-making and cleaning of the room and sanitary facilities. Similar establishments are other similar types of accommodation which is let per room and has a limited number of hotel-type services, including bed-making and cleaning of rooms and sanitary facilities, on a daily basis.

COUNTRY CODES

EU-27: European Union	IE: Ireland	LT: Lithuania	PT: Portugal	HR: Croatia
BG: Bulgaria	EL: Greece	LU: Luxembourg	RO: Romania	CH: Switzerland
BE: Belgium	ES: Spain	HU: Hungary	SI: Slovenia	IS: Iceland
CZ: Czech Republic	FR: France	MT: Malta	SK: Slovakia	LI: Liechtenstein
DK: Denmark	IT: Italy	NL: Netherlands	FI: Finland	NO: Norway
DE: Germany	CY: Cyprus	AT: Austria	SE: Sweden	
EE: Estonia	LV: Latvia	PL: Poland	UK: United Kingdom	

SYMBOLS

": data unavailable or unreliable

Further information

Data on "Tourism statistics":

<http://epp.eurostat.ec.europa.eu/portal/page/portal/tourism/data/database>

More information about Tourism statistics:

<http://epp.eurostat.ec.europa.eu/portal/page/portal/tourism/introduction>

European Statistical Data Support:

Contact details for this support network can be found on our Internet site:

<http://ec.europa.eu/eurostat/>

Manuscript completed on: 06.10.2010

Data extracted on: 28.09.2010

ISSN 1977-0340

Catalogue number: KS-QA-10-041-EN-N

© European Union, 2010