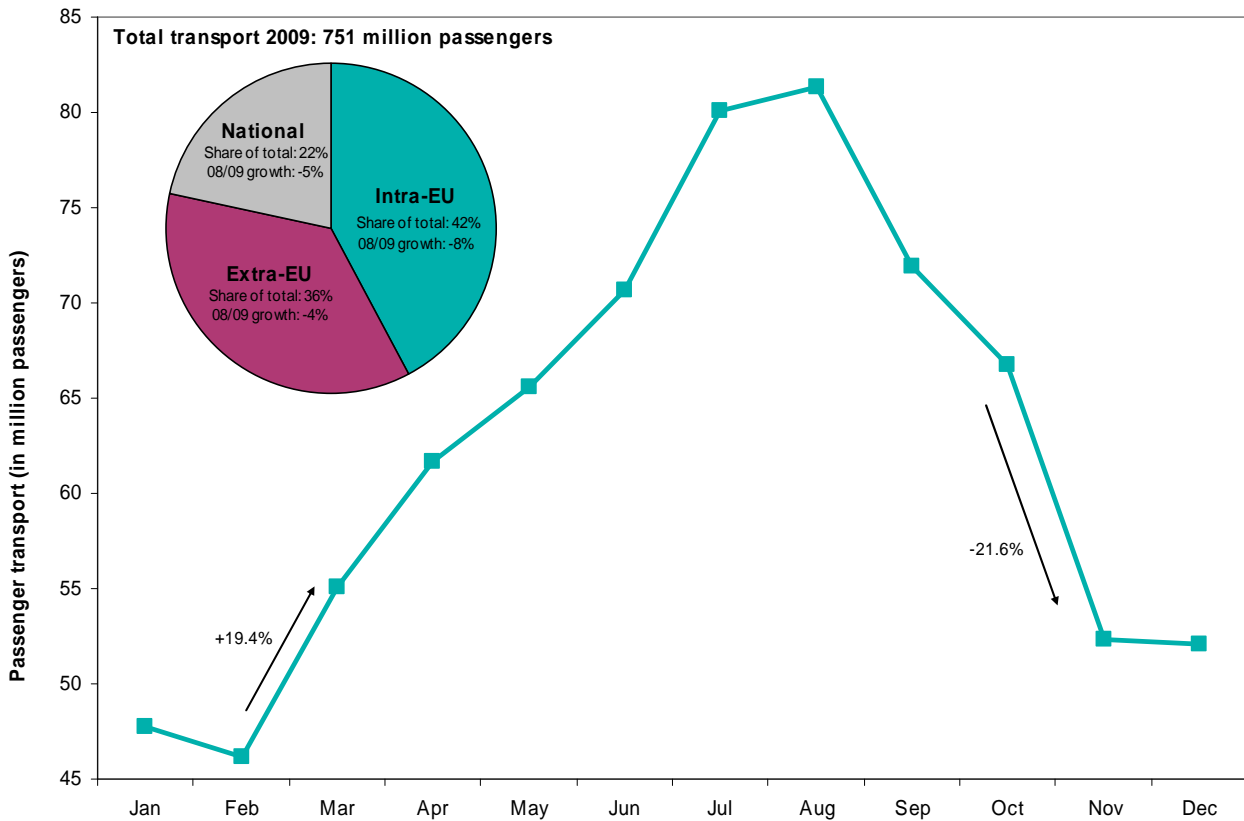


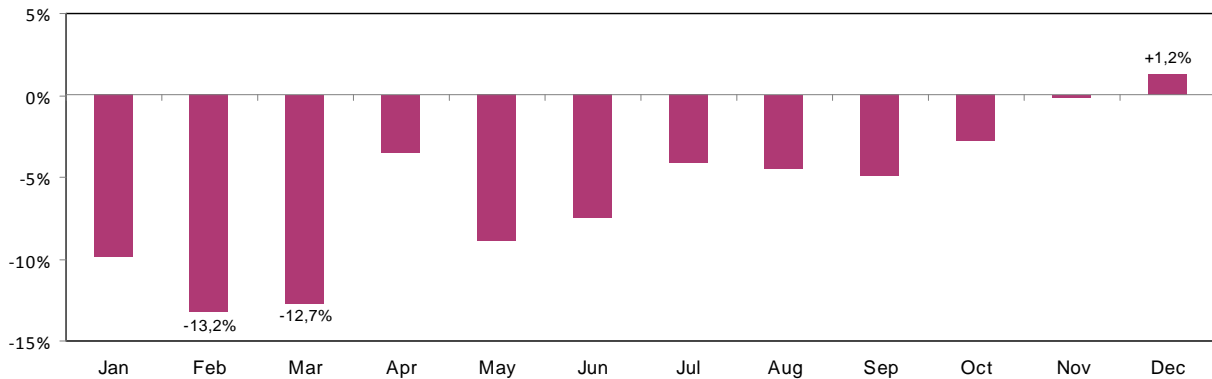
Passenger air transport – 2009 monthly data

Graph 1: EU-27 monthly passengers carried in 2009*



Source: Eurostat ([avia_paoc](#))

Graph 2: 2008/2009 evolution in passengers carried*



Source: Eurostat ([avia_paoc](#))

* For more details about the data presented, please see the notes in the "Methodology" section

Table 1: Passengers carried (in 1000) per country: monthly data for 2009

	Total 2008	2009												Total 2009	Growth 2008-2009
		Jan	Feb	Mar	Apr	May	Jun	Jul	Aug	Sep	Oct	Nov	Dec		
BELGIUM	21 982	1 242	1 269	1 537	1 874	1 921	1 954	2 304	2 236	2 031	1 881	1 593	1 471	21 314	-3.0%
BULGARIA	6 418	273	240	261	273	414	777	1 042	1 072	689	312	227	259	5 839	-9.0%
CZECH REPUBLIC	13 429	671	641	836	981	1 032	1 235	1 447	1 474	1 291	1 053	855	852	12 367	-7.9%
DENMARK	24 629	1 327	1 318	1 531	1 806	1 911	1 953	2 055	1 916	1 839	2 047	1 653	1 503	20 860	-15.3%
GERMANY	166 095	9 950	9 855	11 940	12 981	14 017	14 550	15 922	15 722	15 229	15 228	11 695	11 063	158 150	-4.8%
ESTONIA	1 804	99	91	114	111	115	127	128	130	118	118	99	92	1 341	-25.7%
IRELAND	30 018	1 825	1 820	2 141	2 201	2 364	2 516	2 763	2 767	2 296	2 167	1 721	1 695	26 277	-12.5%
GREECE	34 404	1 102	985	1 211	1 894	3 122	4 218	5 126	5 462	4 417	2 747	1 275	1 323	32 882	-4.4%
SPAIN	161 401	8 630	8 901	10 715	12 440	13 063	14 165	16 465	17 000	14 437	13 207	9 773	9 523	148 318	-8.1%
FRANCE	122 724	8 031	7 658	8 967	10 346	10 513	10 666	12 117	12 080	10 316	10 024	8 259	8 580	117 557	-4.2%
ITALY	105 217	6 070	5 961	7 377	8 728	9 176	9 587	10 850	11 531	9 969	8 925	6 907	7 086	102 167	-2.9%
CYPRUS	7 218	274	249	336	560	642	715	860	927	779	701	371	315	6 730	-6.8%
LATVIA	3 687	256	224	275	326	351	386	431	428	387	375	307	317	4 063	10.2%
LITHUANIA	2 552	129	107	132	140	157	179	198	198	177	171	142	138	1 867	-26.8%
LUXEMBOURG	1 713	89	91	105	135	143	144	162	168	144	139	111	105	1 535	-10.4%
HUNGARY	8 429	487	428	548	672	694	743	869	919	829	766	578	549	8 081	-4.1%
MALTA	3 110	138	140	184	255	258	278	347	377	324	280	180	158	2 919	-6.1%
NETHERLANDS	50 419	3 074	2 893	3 393	3 891	4 175	4 132	4 854	4 813	4 325	4 277	3 357	3 295	46 479	-7.8%
AUSTRIA	23 900	1 553	1 516	1 741	1 783	1 857	1 967	2 177	2 123	2 030	1 873	1 575	1 621	21 817	-8.7%
POLAND	18 727	1 075	1 036	1 162	1 289	1 475	1 686	1 948	1 861	1 772	1 466	1 142	1 134	17 046	-9.0%
PORTUGAL	25 180	1 413	1 321	1 629	2 121	2 162	2 228	2 662	2 871	2 392	2 166	1 543	1 597	24 104	-4.3%
ROMANIA	8 031	510	470	576	643	643	738	841	887	807	669	579	621	7 984	-0.6%
SLOVENIA	1 649	79	72	84	105	118	148	186	186	154	122	89	80	1 423	-13.7%
SLOVAKIA	2 596	115	108	123	139	147	209	278	309	176	127	107	111	1 948	-25.0%
FINLAND	14 851	1 080	1 052	1 195	1 157	1 116	1 239	1 205	1 207	1 191	1 245	999	1 144	13 829	-6.9%
SWEDEN	27 818	1 733	1 754	2 086	2 077	2 249	2 402	2 174	2 252	2 308	2 282	2 032	1 869	25 219	-9.3%
UNITED KINGDOM	213 888	12 942	12 473	14 764	16 185	17 334	18 732	21 140	21 491	19 177	17 524	13 289	13 481	198 532	-7.2%
EU-27*	798 331	47 723	46 153	55 104	61 644	65 624	70 677	80 065	81 349	71 953	66 718	52 293	52 098	751 401	-5.9%
CROATIA	4 504	154	133	170	278	424	538	693	739	553	338	163	152	4 335	-3.8%
THE FORMER YUGOSLAV REPUBLIC OF MACEDONIA	688	41	35	40	45	50	56	84	83	56	51	41	48	631	-8.2%
TURKEY	79 373	4 348	4 304	4 907	5 952	7 563	8 673	10 061	10 520	9 059	8 122	5 907	5 891	85 307	7.5%
ICELAND	2 241	135	119	101	129	149	218	285	275	163	145	107	105	1 932	-13.8%
NORWAY	:	:	:	:	:	:	:	:	:	:	:	:	:	:	:
SWITZERLAND	36 596	2 633	2 524	2 929	3 047	2 951	3 110	3 476	3 435	3 150	3 284	2 599	2 789	35 928	-1.8%

Source: Eurostat ([avia_paoc](#))

* For more details about the data presented, please see the notes in the "Methodology section"

Table 2: Passengers handled in top airports* (in 1000): monthly data for 2009

Rank 2009	Airports*	Country	Total 2008	2009												Total 2009	Growth 2008-2009
				Jan	Feb	Mar	Apr	May	Jun	Jul	Aug	Sep	Oct	Nov	Dec		
1	LONDON/HEATHROW	UK	66 907	4 853	4 371	5 193	5 613	5 425	5 775	6 477	6 383	5 783	5 687	5 028	5 315	65 904	-1.5%
2	PARIS/CHARLES DE GAULLE	FR	60 496	4 094	3 806	4 513	5 064	5 008	5 098	5 689	5 695	5 022	5 046	4 249	4 406	57 689	-4.6%
3	FRANKFURT/MAIN	DE	53 189	3 519	3 321	4 005	4 232	4 406	4 501	4 864	4 860	4 578	4 598	3 875	3 814	50 573	-4.9%
4	MADRID/BARAJAS	ES	50 366	3 099	3 262	3 840	4 195	4 025	4 231	4 804	4 687	4 227	4 192	3 671	3 709	47 944	-4.8%
5	AMSTERDAM/SCHIPHOL	NL	47 404	2 912	2 722	3 201	3 673	3 893	3 852	4 533	4 485	4 016	3 984	3 159	3 101	43 532	-8.2%
6	ROMA/FIUMICINO	IT	34 815	1 993	2 016	2 606	2 960	3 052	2 963	3 346	3 397	3 128	3 019	2 446	2 489	33 416	-4.0%
7	MÜNCHEN	DE	34 399	2 162	2 205	2 573	2 714	2 834	2 864	3 027	3 020	3 125	3 104	2 562	2 370	32 560	-5.3%
8	LONDON/GATWICK	UK	34 162	1 979	1 989	2 317	2 577	2 846	3 069	3 540	3 740	3 292	2 827	2 064	2 121	32 360	-5.3%
9	BARCELONA	ES	30 364	1 635	1 775	2 108	2 407	2 388	2 491	2 821	2 879	2 501	2 360	2 007	1 915	27 287	-10.1%
10	PARIS/ORY	FR	26 188	1 808	1 747	2 005	2 242	2 195	2 259	2 530	2 417	2 059	2 010	1 874	1 942	25 087	-4.2%
11	PALMA DE MALLORCA	ES	22 807	731	811	1 111	1 590	2 215	2 588	2 977	3 054	2 508	1 978	836	775	21 173	-7.2%
12	DUBLIN	IE	23 379	1 443	1 425	1 685	1 739	1 842	1 940	2 116	2 096	1 783	1 692	1 364	1 347	20 472	-12.4%
13	LONDON/STANSTED	UK	22 338	1 288	1 295	1 534	1 629	1 647	1 840	2 182	2 224	1 856	1 776	1 312	1 366	19 949	-10.7%
14	KØBENHAVN/KASTRUP	DK	21 687	1 297	1 296	1 504	1 620	1 689	1 905	1 986	1 857	1 789	1 803	1 495	1 364	19 605	-9.6%
15	MANCHESTER	UK	21 062	1 181	1 150	1 341	1 455	1 712	1 846	2 036	2 151	1 948	1 601	1 122	1 085	18 630	-11.5%
16	WIEN/SCHWECHAT	AT	19 687	1 149	1 132	1 364	1 512	1 597	1 643	1 818	1 756	1 706	1 635	1 378	1 353	18 045	-8.3%
17	DÜSSELDORF	DE	18 103	1 080	1 067	1 313	1 390	1 593	1 640	1 869	1 717	1 750	1 783	1 349	1 173	17 724	-2.1%
18	MILANO/MALPENSA	IT	19 012	1 183	1 117	1 365	1 476	1 457	1 570	1 716	1 887	1 600	1 470	1 234	1 272	17 348	-8.8%
19	BRUXELLES/NATIONAL	BE	18 369	996	1 011	1 244	1 504	1 526	1 547	1 804	1 725	1 607	1 480	1 223	1 119	16 785	-8.6%
20	ATHENS INTL/ELEFTHERIOS VENIZELOS	EL	16 362	946	865	1 048	1 368	1 371	1 577	1 837	1 906	1 637	1 368	1 086	1 130	16 138	-1.4%
21	STOCKHOLM/ARLANDA	SE	18 126	1 120	1 129	1 371	1 342	1 437	1 534	1 351	1 411	1 440	1 439	1 305	1 180	16 058	-11.4%
22	BERLIN/TEGEL	DE	14 454	913	948	1 154	1 176	1 252	1 255	1 276	1 222	1 346	1 370	1 172	1 051	14 133	-2.2%
23	LISBOA	PT	13 604	874	800	945	1 191	1 121	1 139	1 391	1 495	1 227	1 160	928	993	13 265	-2.5%
24	HELSINKI/VANTAA	FI	13 435	955	949	1 088	1 064	1 029	1 145	1 126	1 130	1 099	1 138	921	960	12 602	-6.2%
25	HAMBURG	DE	12 782	771	798	995	1 001	1 070	1 078	1 175	1 085	1 150	1 199	964	892	12 178	-4.7%
26	PRAHA/RUZYNE	CZ	12 587	641	613	801	943	986	1 128	1 308	1 338	1 181	1 008	826	829	11 602	-7.8%
27	MALAGA	ES	12 754	563	608	789	1 024	1 140	1 176	1 339	1 380	1 202	1 102	657	621	11 601	-9.0%
28	NICE/CÔTE D'AZUR	FR	10 365	541	540	685	835	970	991	1 134	1 134	945	853	595	591	9 813	-5.3%
29	KÖLN/BONN	DE	10 296	571	561	678	791	904	920	1 032	988	969	947	684	651	9 696	-5.8%
30	LONDON/LUTON	UK	10 174	576	545	672	787	841	861	978	1 012	868	811	599	564	9 115	-10.4%

Source: Eurostat (avia.paoa)

* Top-30 airports according to the total annual passengers handled in 2009

Comments

Definition of “Passengers carried”

All passengers on a particular flight counted once only and not repeatedly on each individual stage of that flight. This excludes direct transit passengers.

Exclusion of double counting

The national transport (included in the total transport at country level) and the intra-EU transport aggregates (included in the total transport at EU level) have been calculated excluding double counting.

Country Specific Notes

Norway: No data available for 2009.

Country codes

BE Belgium - CZ Czech Republic - DK Denmark - DE Germany - IE Ireland - EL Greece - ES Spain - FR France - IT Italy - NL Netherlands - AT Austria - PT Portugal - FI Finland - SE Sweden - UK United Kingdom

Legend

The symbol “.” stands for “data not available”

Further information

Eurostat Website: <http://ec.europa.eu/eurostat>

Data on “Transport statistics”

<http://epp.eurostat.ec.europa.eu/portal/page/portal/transport/data/database>

Select “Air transport”

More information about “Transport statistics”

<http://epp.eurostat.ec.europa.eu/portal/page/portal/transport/introduction>

European Statistical Data Support:

Contact details for this support network can be found on our Internet site:

<http://ec.europa.eu/eurostat/>

Manuscript completed on: 13.07.2010

Data extracted on: 12.07.2010

ISSN 1977-0340

Catalogue number: KS-QA-10-034-EN-N

© European Union, 2010