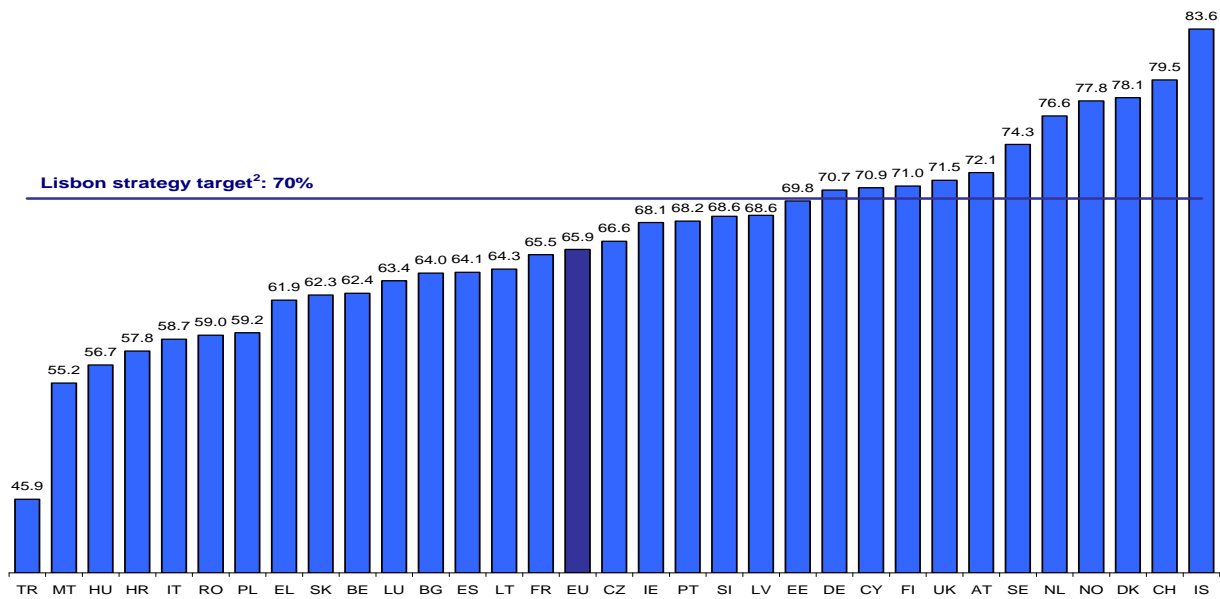


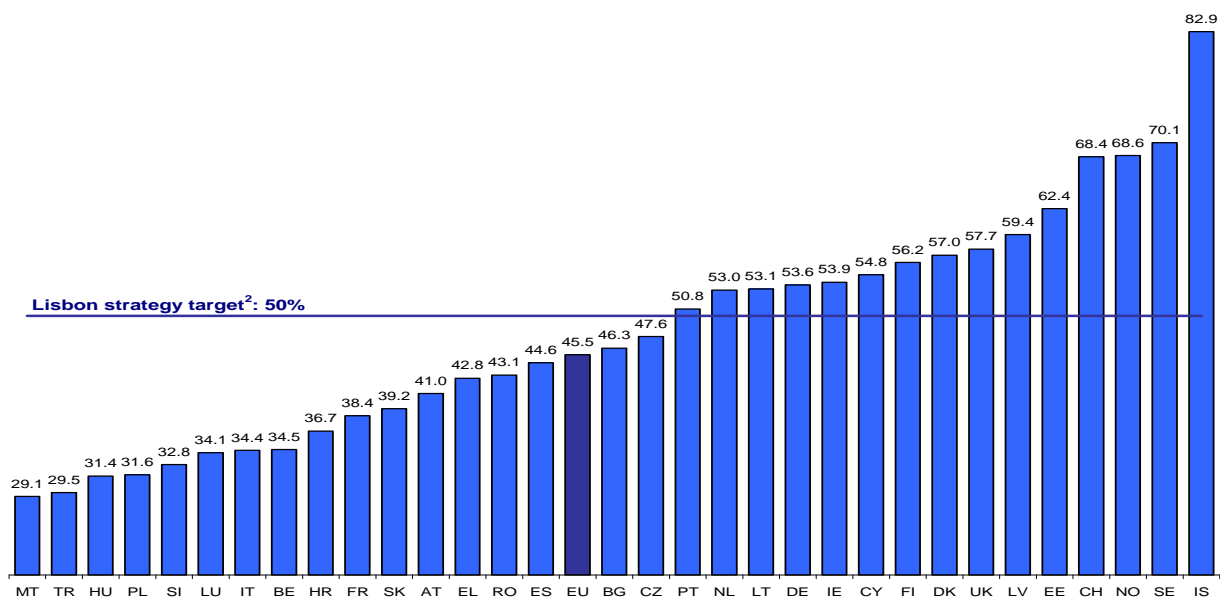
# European Union Labour Force Survey-Annual results 2008

Chart 1: Total employment rate<sup>1</sup> (persons aged 15 to 64 years) in 2008



Source: Eurostat ([tsiem010](#))

Chart 2: Employment rate<sup>1</sup> of older workers (persons aged 55 to 64 years) in 2008



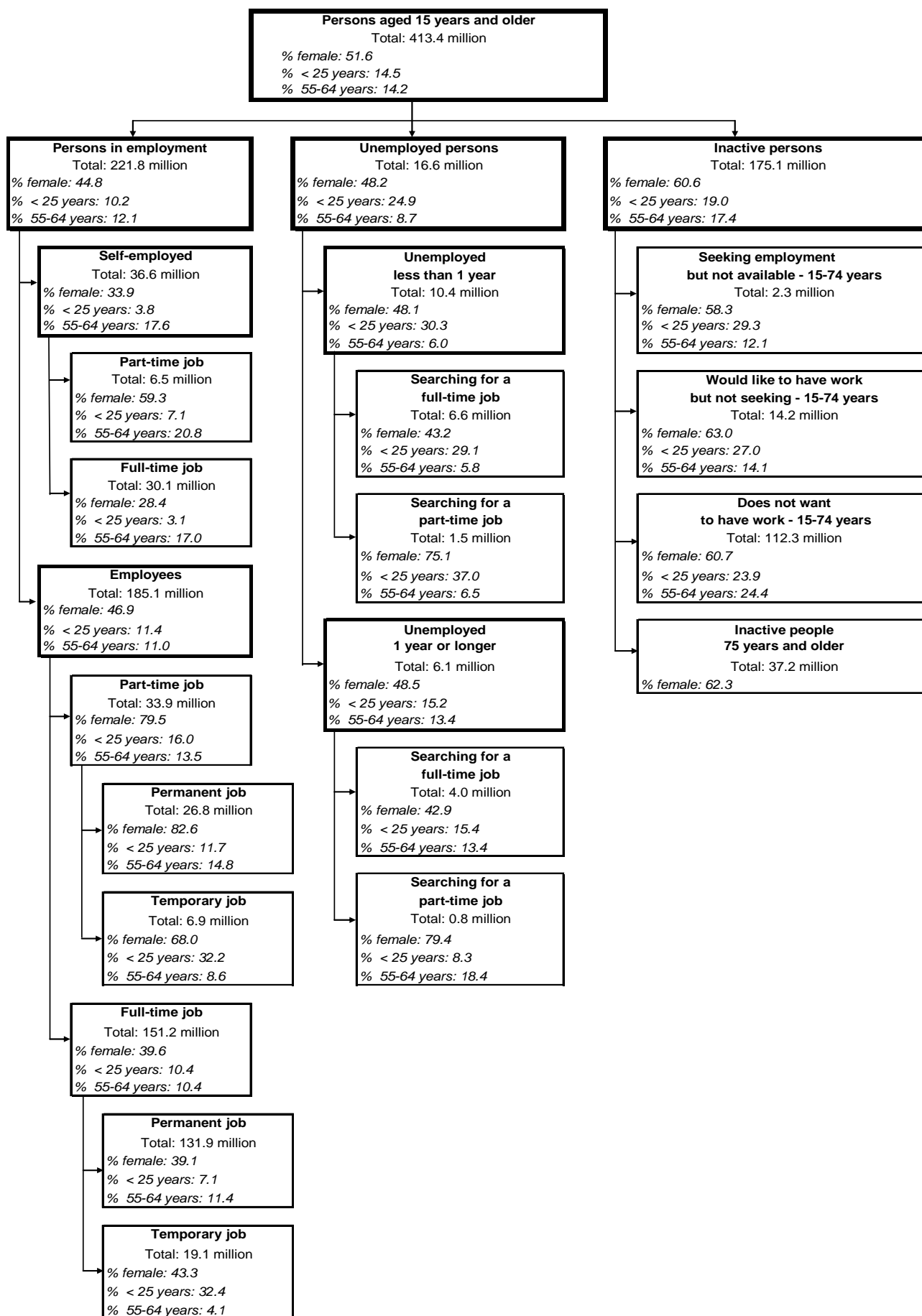
Notes: In chart 1 and chart 2, EU refers to EU-27

(1) Employment rates represent employed persons as a percentage of the same age population.

(2) Targets set by the European Council in Lisbon (2000) and Stockholm (2001), to be achieved by 2010.

Source: Eurostat ([tsiem020](#))

## Work status of persons aged 15 years and older, EU-27, 2008 (1)



Notes: (1) Due to non-response, certain sub-totals may not exactly sum up to the corresponding aggregate

**Table 1 - Employed persons: number, employment rates and share of part-time employment by sex, 2008**

	Total employment (1000)				Employment rates (%)							Part-time employment as a share of total employment (%)		
	Age 15 and older				Age 15-64				Age 55-64			Age 15-64		
	Total	Confidence limit	Men	Women	Total	Confidence limit	Men	Women	Total	Men	Women	Total	Men	Women
<b>EU-27</b>	<b>221 762</b>	<b>± 352</b>	<b>122 495</b>	<b>99 268</b>	<b>65.9</b>	<b>± 0.1</b>	<b>72.8</b>	<b>59.1</b>	<b>45.6</b>	<b>55.0</b>	<b>36.9</b>	<b>17.6</b>	<b>7.0</b>	<b>30.6</b>
<b>EA15</b>	<b>141 805</b>	<b>± 206</b>	<b>79 040</b>	<b>62 765</b>	<b>66.1</b>	<b>± 0.1</b>	<b>73.4</b>	<b>58.8</b>	<b>44.4</b>	<b>53.3</b>	<b>35.9</b>	<b>19.3</b>	<b>7.0</b>	<b>34.7</b>
BE	4 446	± 31	2 461	1 985	62.4	± 0.4	68.6	56.2	34.5	42.8	26.3	22.4	7.5	40.8
BG	3 361	± 63	1 793	1 568	64.0	± 1.2	68.5	59.5	46.0	55.7	37.7	2.0	1.7	2.4
CZ	5 003	± 35	2 863	2 139	66.6	± 0.5	75.4	57.6	47.6	61.9	34.4	4.3	1.6	7.8
DK	2 854	± 10	1 518	1 336	78.1	± 0.3	81.9	74.2	57.0	64.3	49.7	23.9	13.0	36.1
DE	38 880	± 106	21 069	17 810	70.7	± 0.2	75.9	65.4	53.8	61.8	46.1	25.2	8.4	44.9
EE	657	± 14	331	326	69.7	± 1.5	73.6	66.3	62.0	65.6	60.0	6.3	(3.4)	9.3
IE	2 101	± 16	1 181	921	67.6	± 0.5	74.9	60.2	53.6	66.1	40.9	18.1	7.1	31.9
EL	4 559	± 80	2 775	1 784	61.9	± 1.1	75.0	48.7	42.7	59.2	27.5	5.4	2.5	9.8
ES	20 258	± 95	11 721	8 537	64.3	± 0.3	73.5	54.9	45.6	60.9	31.2	11.8	4.0	22.6
FR	26 004	± 102	13 782	12 222	65.2	± 0.3	69.8	60.7	38.3	40.6	36.1	16.7	5.6	29.3
IT	23 405	± 87	14 064	9 341	58.7	± 0.2	70.3	47.2	34.4	45.5	24.0	14.1	4.8	27.8
CY	383	± 8	212	171	71.0	± 1.4	78.9	62.7	55.3	69.0	38.6	6.7	3.4	10.7
LV	1 125	± 11	572	552	68.6	± 0.7	72.1	65.5	59.4	63.0	56.6	5.5	3.8	7.2
LT	1 520	± 32	769	751	64.3	± 1.3	67.1	61.8	53.1	60.7	47.7	6.4	4.7	8.3
LU	202	± 1	115	87	63.3	± 0.4	72.0	55.4	34.7	40.0	29.2	17.8	(2.6)	37.9
HU	3 879	± 28	2 111	1 769	56.7	± 0.4	63.0	50.6	31.4	38.4	25.7	4.3	3.0	5.8
MT	160	± 2	107	53	55.0	± 0.8	72.1	37.3	28.8	44.8	13.3	11.3	3.8	24.5
NL	8 593	± 43	4 676	3 917	77.2	± 0.4	83.2	71.1	53.0	63.7	42.2	46.8	22.8	75.2
AT	4 090	± 40	2 222	1 868	72.1	± 0.7	78.5	65.8	41.1	51.9	30.8	22.6	6.8	41.1
PL	15 800	± 93	8 718	7 082	59.2	± 0.3	66.3	52.4	31.6	44.0	20.7	7.7	5.1	11.0
PT	5 198	± 53	2 797	2 401	68.2	± 0.7	74.0	62.5	50.8	58.5	44.0	8.6	4.1	14.0
RO	9 369	± 202	5 157	4 212	59.0	± 1.3	65.6	52.5	43.1	53.0	34.5	8.6	8.1	9.3
SI	996	± 16	543	453	68.6	± 1.1	72.5	64.3	32.7	44.4	21.3	8.1	6.2	10.4
SK	2 434	± 19	1 364	1 070	62.3	± 0.5	69.9	54.7	39.2	56.5	24.3	2.5	1.3	4.0
FI	2 531	± 12	1 315	1 216	71.1	± 0.3	73.1	69.0	56.4	57.0	55.8	12.7	7.9	17.8
SE	4 593	± 22	2 422	2 171	74.3	± 0.3	76.8	71.8	70.1	73.4	66.7	25.7	11.9	40.9
UK	29 364	± 115	15 838	13 526	71.5	± 0.3	77.3	65.8	58.0	67.3	49.1	24.2	9.8	41.0
HR	1 636	± 54	905	730	57.8	± 1.9	65.0	50.8	36.7	49.1	25.6	6.9	5.3	8.8
TR	21 566	± 42	15 835	5 731	45.9	± 0.1	67.7	24.3	29.5	43.0	16.5	9.1	5.0	20.2
IS	177	± 1	96	81	83.3	± 0.7	86.8	80.4	81.3	87.5	80.0	20.0	8.7	33.3
NO	2 514	± 14	1 323	1 191	78.0	± 0.4	80.5	75.4	69.2	74.1	64.3	27.4	13.4	43.0
CH	4 229	± 50	2 289	1 940	79.5	± 0.9	85.4	73.5	68.4	77.1	60.1	33.3	11.9	58.4

Source: Eurostat ([lfsi\\_emp\\_a](#))

**Table 2 – Employed persons 15 and older by sex: composition by industry (main job), 2008**

(%)	Total				Men				Women			
	Agriculture	Industry	Market services	Non-market services	Agriculture	Industry	Market services	Non-market services	Agriculture	Industry	Market services	Non-market services
BE	1.7	24.5	38.0	35.8	2.2	36.1	39.5	22.3	1.1	10.3	36.2	52.5
BG	8.5	35.4	35.4	20.7	10.5	41.6	33.7	14.2	6.3	28.3	37.2	28.3
CZ	4.3	39.4	34.4	21.9	5.5	49.2	32.3	13.1	2.6	26.4	37.3	33.8
DK	2.6	22.5	38.8	36.0	4.0	32.1	43.1	20.7	1.1	11.5	34.0	53.4
DE	2.1	29.0	38.9	30.1	2.6	40.8	37.4	19.2	1.4	15.0	40.6	43.0
EE	4.7	34.5	36.6	24.1	7.0	46.7	34.2	12.1	(2.5)	22.2	39.1	36.3
IE (*)	5.7	25.8	40.6	27.9	8.9	37.9	38.0	15.1	1.5	10.4	43.8	44.3
EL	11.7	21.9	41.0	25.4	11.6	30.0	40.0	18.5	11.9	9.3	42.5	36.3
ES	4.3	27.6	42.5	25.6	5.5	39.7	39.3	15.5	2.6	11.1	46.9	39.3
FR	2.9	23.4	37.8	35.9	3.7	34.4	39.6	22.3	1.9	11.0	35.9	51.2
IT	3.9	29.7	40.2	26.2	4.5	38.9	39.9	16.7	2.9	15.9	40.7	40.6
CY	4.4	22.9	44.5	28.1	5.7	33.5	42.0	18.9	2.9	9.9	47.7	39.5
LV	8.1	28.9	37.8	25.3	10.5	40.4	33.9	15.2	5.6	16.8	41.8	35.8
LT	8.2	30.4	36.1	25.4	10.4	41.6	34.3	13.7	5.9	18.9	37.8	37.4
LU	2.0	14.9	43.1	40.1	(2.6)	21.6	44.8	31.0	(1.1)	5.7	41.4	51.7
HU	4.6	32.1	37.7	25.6	6.4	41.5	36.7	15.4	2.3	20.9	39.0	37.8
MT (*)	(1.9)	25.5	42.9	29.8	(2.8)	32.7	42.1	22.4	:	11.1	44.4	44.4
NL	2.9	18.5	43.2	35.3	3.8	28.0	46.4	21.8	1.8	7.4	39.6	51.2
AT	5.6	26.0	42.4	25.9	5.7	37.6	39.6	17.1	5.5	12.1	45.8	36.6
PL	15.5	30.4	32.2	22.0	16.4	40.9	30.2	12.5	14.2	17.5	34.6	33.6
PT	11.5	29.0	34.4	25.1	11.2	39.5	34.8	14.6	11.9	16.8	34.0	37.3
RO	29.8	30.5	24.6	15.1	29.1	36.1	23.9	10.8	30.7	23.5	25.4	20.3
SI	9.0	34.7	34.0	22.3	9.4	44.9	32.3	13.3	8.4	22.6	35.9	33.0
SK	4.5	39.5	33.3	22.7	6.3	51.5	29.6	12.5	2.3	24.3	37.9	35.5
FI	4.7	25.0	38.5	31.8	6.6	38.4	39.7	15.3	2.7	10.4	37.2	49.6
SE	2.3	21.1	39.9	36.7	3.6	32.7	44.8	18.9	0.9	8.2	34.3	56.5
UK	1.5	21.6	43.0	33.9	2.0	32.1	45.4	20.5	0.9	9.2	40.2	49.6
HR	13.9	30.2	35.4	20.5	13.1	40.0	34.4	12.5	14.9	18.1	36.4	30.5
TR (*)	26.2	25.7	31.1	17.0	19.0	29.7	35.4	15.8	46.0	14.7	19.3	20.1
IS	4.5	22.0	39.5	33.9	6.3	33.3	42.7	17.7	2.5	8.6	35.8	53.1
NO	4.3	19.3	39.0	37.4	6.4	30.3	42.8	20.5	2.0	7.0	34.7	56.3
CH (*)	4.1	22.0	40.5	33.4	5.2	31.5	42.1	21.2	2.8	10.9	38.6	47.7

Notes :

(\*) The breakdown of employed persons by economic activity is still based on the classification NACE Rev 1.1 (sections A and B for agriculture, C to F industry, G to K for market services, and L to Q for non market services).

For all other countries, NACE Rev 2 (sections A and B for agriculture, C to F industry, G to N for market services, and O to U for non market services) is used, which is being implemented in the EU-LFS starting from 2008 quarter 1. As a few Member States are changing over their LFS to NACE Rev. 2 in 2009, during the transition period no 2008 EU/EA estimates from LFS are calculated with economic activity breakdowns.

- BG: due to the very high proportion of persons employed in agriculture in addition to another main occupation, the Labour Force Survey does not provide a precise estimate of total employment in this sector.

Source: Eurostat ([lfsa.egana](http://lfsa.egana))

**Table 3 – Employed persons 15 and older by sex: composition by occupation (main job), 2008**

Total				Men				Women				(%)
Skilled non manual	Low skilled non manual	Skilled manual	Elementary occup.	Skilled non manual	Low skilled non manual	Skilled manual	Elementary occup.	Skilled non manual	Low skilled non manual	Skilled manual	Elementary occup.	
<b>39.1</b>	<b>24.3</b>	<b>26.7</b>	<b>9.8</b>	<b>37.8</b>	<b>13.6</b>	<b>40.1</b>	<b>8.6</b>	<b>40.8</b>	<b>37.6</b>	<b>10.3</b>	<b>11.2</b>	<b>EU-27</b>
<b>40.1</b>	<b>24.8</b>	<b>25.1</b>	<b>10.0</b>	<b>39.1</b>	<b>14.2</b>	<b>38.7</b>	<b>8.0</b>	<b>41.4</b>	<b>38.1</b>	<b>8.1</b>	<b>12.5</b>	<b>EA15</b>
44.3	26.9	19.8	9.0	44.5	16.7	31.6	7.2	43.9	39.6	5.3	11.2	BE
29.5	23.1	34.5	12.9	26.0	14.8	45.4	13.7	33.4	32.5	22.1	12.0	BG
40.8	18.6	35.2	5.4	36.8	10.1	49.0	4.1	46.2	30.1	16.6	7.1	CZ
45.6	25.6	18.4	10.4	44.8	12.9	30.8	11.5	46.5	39.9	4.4	9.1	DK
42.6	24.9	24.0	8.5	40.9	13.2	38.5	7.5	44.7	38.7	6.8	9.8	DE
39.4	18.0	33.0	9.6	33.0	8.2	51.5	7.3	45.8	28.0	14.2	12.0	EE
39.2	30.8	21.3	8.7	38.5	16.3	35.2	9.9	40.0	49.2	3.6	7.3	IE
35.0	25.8	32.4	6.8	33.6	18.1	43.2	5.1	37.1	37.8	15.7	9.4	EL
32.9	25.3	27.3	14.4	31.3	15.3	42.6	10.7	35.1	39.0	6.4	19.5	ES
42.0	24.4	23.9	9.6	43.1	11.9	38.7	6.4	40.8	38.6	7.3	13.3	FR
40.7	22.9	27.0	9.4	38.5	15.6	37.8	8.2	44.0	33.8	10.8	11.3	IT
32.7	29.8	22.5	14.9	33.5	18.9	37.3	10.4	31.6	43.3	4.1	21.1	CY
40.4	17.0	29.2	13.4	30.6	8.6	46.6	14.2	50.4	25.9	11.2	12.5	LV
39.9	16.6	34.4	9.1	31.6	8.2	52.2	7.9	48.3	25.1	16.2	10.4	LT
47.0	24.8	17.3	10.9	47.0	17.4	27.8	7.8	47.7	34.9	(2.3)	15.1	LU
36.2	23.4	32.4	8.0	30.5	14.8	48.2	6.5	42.9	33.7	13.6	9.8	HU
36.9	28.1	22.5	12.5	35.8	20.8	30.2	13.2	38.9	42.6	7.4	11.1	MT
49.1	26.2	15.7	9.0	50.1	14.6	26.4	8.9	48.0	39.9	2.9	9.2	NL
37.1	27.3	24.5	11.1	39.0	14.3	37.6	9.2	34.8	42.8	9.0	13.4	AT
33.0	19.0	40.3	7.8	26.9	11.6	55.1	6.3	40.4	28.0	22.0	9.6	PL
25.0	24.5	37.7	12.8	25.2	15.8	51.0	7.9	24.7	34.5	22.3	18.5	PT
22.6	14.9	51.3	11.3	19.8	8.9	59.3	12.0	25.9	22.2	41.5	10.3	RO
39.3	20.9	31.7	8.0	35.1	14.1	44.5	6.3	44.3	29.2	16.5	10.0	SI
35.1	20.4	35.7	8.8	28.9	11.1	51.5	8.5	42.9	32.1	15.7	9.3	SK
44.7	22.5	24.9	8.0	43.8	8.7	40.9	6.6	45.6	37.3	7.7	9.4	FI
44.9	27.5	21.5	6.1	44.0	14.2	36.3	5.5	46.1	42.2	5.1	6.7	SE
42.9	29.9	16.6	10.6	45.1	14.2	28.4	12.3	40.4	48.4	2.7	8.5	UK
30.6	26.2	35.5	7.8	29.8	17.1	46.4	6.6	31.6	37.3	21.9	9.2	HR
21.3	17.9	45.6	15.2	22.0	17.6	46.7	13.7	19.5	18.7	42.7	19.1	TR
45.8	26.0	21.5	6.8	41.2	16.5	35.1	7.2	51.9	35.8	4.9	7.4	IS
44.3	30.9	20.4	4.4	43.4	18.8	34.7	3.2	45.3	44.3	4.5	5.8	NO
47.4	24.2	22.7	5.6	48.1	13.9	34.4	3.6	46.6	36.5	8.9	7.9	CH

Note: The breakdown of employed persons by occupation is based on the classification ISCO 88-COM (groups 1 to 3 for skilled non manual, 4 to 5 for low skilled non manual, 6 to 8 for skilled manual and 9 for elementary occupations).

Source: Eurostat ([lfsa\\_egais](#))

**Table 4 – Employees aged 15 and older: number, average hours usually worked per week and share of temporary contracts by sex, 2008**

	Number of employees (1000)			Usual hours worked per week						Share of employees with limited duration contract (%)		
	Total	Men	Women	Full time			Part time			Total	Men	Women
				Total	Men	Women	Total	Men	Women			
<b>EU-27</b>	<b>185 115</b>	<b>98 278</b>	<b>86 837</b>	<b>40.5</b>	<b>41.3</b>	<b>39.3</b>	<b>20.1</b>	<b>19.1</b>	<b>20.4</b>	<b>14.0</b>	<b>13.3</b>	<b>14.9</b>
<b>EA15</b>	<b>118 923</b>	<b>63 708</b>	<b>55 215</b>	<b>40.0</b>	<b>40.7</b>	<b>38.8</b>	<b>20.1</b>	<b>19.1</b>	<b>20.3</b>	<b>16.4</b>	<b>15.4</b>	<b>17.5</b>
BE	3 813	2 042	1 771	39.1	39.6	38.0	23.7	24.6	23.5	8.3	6.6	10.2
BG	2 944	1 530	1 414	41.5	41.9	41.2	21.3	(22.7)	20.5	5.1	5.6	4.5
CZ	4 196	2 284	1 912	41.3	42.0	40.5	22.6	21.6	22.9	8.0	6.5	9.8
DK	2 599	1 330	1 269	39.3	40.2	38.1	19.8	15.1	21.7	8.3	7.6	9.1
DE	34 388	18 127	16 261	40.4	40.8	39.7	18.1	16.3	18.5	14.7	14.7	14.6
EE	606	296	310	40.7	41.2	40.1	20.5	(19.9)	20.7	2.3	(3.4)	:
IE	1 736	885	851	38.8	40.2	36.9	18.9	19.4	18.8	8.4	7.2	9.8
EL	2 945	1 714	1 230	40.8	41.7	39.4	20.4	22.2	19.9	11.4	9.9	13.7
ES	16 681	9 279	7 402	40.6	41.4	39.5	19.3	19.2	19.3	29.3	27.6	31.4
FR	23 279	11 950	11 329	39.3	40.1	38.3	23.4	22.5	23.6	14.2	13.0	15.4
IT	17 446	9 908	7 537	39.2	40.5	37.0	22.0	22.1	22.0	13.3	11.5	15.6
CY	306	158	149	40.6	41.2	40.0	21.5	21.0	21.8	14.0	8.2	20.1
LV	1 011	499	512	41.1	41.7	40.6	20.9	22.5	20.3	3.3	4.6	2.0
LT	1 345	660	685	39.9	40.3	39.6	21.4	(20.6)	21.7	2.4	(2.9)	(1.9)
LU	189	108	81	39.8	39.9	39.8	22.4	(24.3)	22.2	6.3	5.6	6.2
HU	3 405	1 789	1 616	40.6	41.0	40.1	24.3	24.3	24.3	7.9	8.7	7.0
MT	139	89	50	40.4	41.0	38.9	21.6	(25.3)	22.3	4.3	(3.4)	(6.0)
NL	7 461	3 939	3 522	38.9	39.1	38.1	19.8	19.3	19.9	18.2	16.6	19.9
AT	3 528	1 874	1 654	42.2	42.9	41.0	20.8	18.5	21.2	9.0	8.9	9.1
PL	12 178	6 541	5 637	41.2	42.5	39.6	22.1	22.5	21.9	27.0	26.3	27.7
PT	3 950	2 087	1 863	40.2	41.0	39.4	19.8	20.4	19.7	22.8	21.7	24.2
RO	6 317	3 468	2 849	41.3	41.6	41.0	24.9	26.7	23.6	1.3	1.3	1.2
SI	855	453	402	41.5	42.0	41.0	20.0	19.3	19.8	17.4	15.4	19.7
SK	2 094	1 112	983	40.8	41.4	40.1	21.4	20.2	21.5	4.7	4.6	4.8
FI	2 207	1 095	1 112	39.1	40.1	38.1	20.2	19.0	20.7	15.0	11.2	18.7
SE	4 115	2 072	2 043	39.9	40.0	39.8	24.3	20.7	25.3	16.1	13.4	18.7
UK	25 382	12 989	12 393	42.4	43.9	40.1	19.2	18.1	19.5	5.4	4.9	6.0
HR	1 282	700	582	41.4	41.9	40.9	(22.5)	(20.8)	(23.3)	12.1	12.0	12.2
TR	12 710	9 860	2 849	52.3	53.4	48.6	20.6	21.1	20.0	11.8	11.6	12.5
IS	154	80	74	45.3	47.7	41.9	21.0	17.4	21.3	9.7	8.9	9.5
NO	2 318	1 180	1 138	38.5	38.8	38.1	19.6	17.0	20.4	9.1	7.1	11.1
CH	3 557	1 874	1 683	:	:	:	:	:	:	13.2	13.2	13.1

Source: Eurostat ([lfsi\\_emp\\_a](#), [lfsa\\_ewhuis](#))

**Table 5 – Unemployed persons: number, share of long-term unemployment and youth unemployment rate by sex, 2008**

Total unemployment (1000)				Share of long-term-unemployment			Youth unemployment ratio (%)	
Total	Confidence limit	Men	Women	Total	Men	Women		
<b>16 601</b>	<b>± 137</b>	<b>8 599</b>	<b>8 001</b>	<b>37.0</b>	<b>36.8</b>	<b>37.2</b>	<b>6.9</b>	<b>EU-27</b>
<b>11 421</b>	<b>± 101</b>	<b>5 775</b>	<b>5 646</b>	<b>38.7</b>	<b>38.0</b>	<b>39.4</b>	<b>6.9</b>	<b>EA15</b>
333	± 16	170	163	47.6	47.1	48.1	6.0	BE
200	± 14	104	96	51.5	50.0	53.1	3.8	BG
230	± 11	103	127	49.1	49.5	48.8	3.1	CZ
98	± 4	47	51	13.4	(14.9)	(12.0)	5.5	DK
3 141	± 44	1 690	1 451	52.6	53.3	51.9	5.5	DE
38	± 4	20	18	30.8	(35.0)	:	(5.0)	EE
134	± 7	89	44	27.1	30.3	18.2	6.6	IE
378	± 15	148	230	47.6	40.5	52.2	6.7	EL
2 591	± 58	1 311	1 280	17.9	13.9	22.0	11.7	ES
2 066	± 57	1 022	1 044	37.5	38.9	36.2	7.1	FR
1 692	± 44	820	872	45.7	43.7	47.6	6.6	IT
15	± 2	7	8	13.3	(14.3)	(12.5)	4.3	CY
91	± 6	49	41	25.6	24.5	26.8	5.6	LV
94	± 8	49	45	(21.3)	(18.0)	(24.4)	(4.1)	LT
11	± 1	5	6	(30.0)	(33.3)	(33.3)	(5.6)	LU
329	± 14	174	155	46.5	47.7	45.2	5.0	HU
10	± 1	6	4	40.0	(50.0)	:	6.9	MT
243	± 10	122	121	34.9	37.0	32.2	3.9	NL
162	± 9	82	80	24.1	25.6	22.5	4.8	AT
1 211	± 45	599	612	33.4	31.7	35.1	5.7	PL
427	± 24	194	233	47.4	48.5	46.6	6.8	PT
576	± 37	369	206	41.3	42.8	38.3	5.6	RO
46	± 3	23	23	42.2	(40.9)	(43.5)	4.3	SI
256	± 15	124	131	69.5	69.4	70.2	6.1	SK
172	± 5	85	87	18.2	20.2	16.3	8.8	FI
305	± 8	153	153	12.8	14.1	10.8	10.7	SE
1 753	± 45	1 032	721	24.1	28.3	18.1	9.2	UK
149	± 11	68	81	63.1	60.3	65.4	7.7	HR
2 232	± 63	1 636	596	23.6	20.9	31.2	6.7	TR
5	± 1	3	2	:	:	:	7.5	IS
66	± 4	37	29	12.7	(13.9)	:	4.7	NO
147	± 10	66	80	32.4	25.8	38.0	4.7	CH

Notes:

- Total unemployment and the share of long-term unemployment refer to persons aged 15-74.

- The number of unemployed calculated here is directly derived from the Labour Force Survey data. The harmonised unemployment series published on a monthly basis by Eurostat can differ from these results.

- Long-term unemployed persons are persons who have been unemployed for one year or more, i.e. unemployed persons who have searched for employment for one year or longer or have left the last job one year or more ago, whichever period is shorter. The share of long-term unemployment represents long-term unemployed persons as a percentage of total unemployed persons.

- Youth unemployment ratio represents unemployed aged 15-24 years as a percentage of the total population of this age group.

Source: Eurostat ([une\\_nb\\_a](#), [une\\_ltu\\_a](#))

## Methodology

---

**Source:** the European Union Labour Force Survey (EU-LFS) is a quarterly, large sample survey providing results for the population in private households in the EU, EFTA, and the Candidate Countries. 2008 data for the Former Yugoslav Republic of Macedonia are not yet available. Conscripts in military or community service are not included in the results.

The yearly sampling rates (population aged 15 and older) vary between 0.56% and 6.85%. The concepts and definitions used in the survey follow the guidelines of International Labour Organisation.

Definitions of indicators presented in this publication are on the Eurostat website:

[http://epp.eurostat.ec.europa.eu/portal/page/portal/employment\\_unemployment\\_lfs/introduction](http://epp.eurostat.ec.europa.eu/portal/page/portal/employment_unemployment_lfs/introduction)

**Reference period:** In Ireland, the reference period is December 2007 to November 2008.

**Coverage:** The data for France cover the metropolitan territory (excluding overseas regions)

**Aggregates:** When data are unavailable for a country, the calculation of the corresponding aggregates takes into account the data for the same country one year before.

**Confidence limits:** All confidence limits are calculated at a level of confidence of 95%. The country limits are derived from coefficients of variation calculated by the National Statistic Institutes. When a coefficient is not available, the coefficient for the last year available is taken. For the calculation of limits of aggregates, we assume that the EU-LFS is a stratified sample with the country as the first stratum.

**Symbols:** figures shown in brackets lack reliability due to small sample size; “:” colons are used for unavailable or extremely unreliable data.

## Further information

---

### European Statistical Data Support:

Contact details for this support network can be found on our Internet site:

<http://ec.europa.eu/eurostat/>

### Data

Data on "Population and Social conditions, Labour force survey":

[http://epp.eurostat.ec.europa.eu/portal/page/portal/employment\\_unemployment\\_lfs/data/database](http://epp.eurostat.ec.europa.eu/portal/page/portal/employment_unemployment_lfs/data/database)

More information about "Population and Social conditions, Labour force survey":

[http://epp.eurostat.ec.europa.eu/portal/page/portal/employment\\_unemployment\\_lfs/introduction](http://epp.eurostat.ec.europa.eu/portal/page/portal/employment_unemployment_lfs/introduction)

---

Manuscript completed on: 03.08.2009

Data extracted on: 19.07.2009

ISSN 1977-0340

Catalogue number: KS-QA-09-033-EN-N

© European Communities, 2009