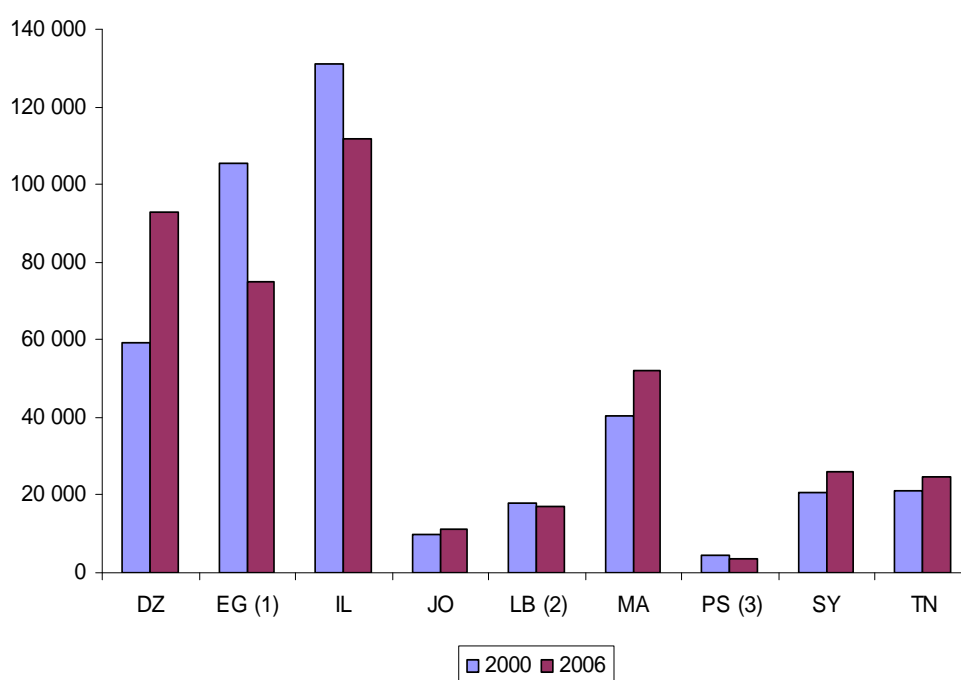


Panorama of the national accounts of the Mediterranean Partner Countries 2000-2006

Graph 1: Gross domestic product (GDP) at current prices, 2000 and 2006 (Million EUR)



Notes: (1) 2005 data instead of 2006. (2) 2004 data instead of 2006. (3) 2003 data instead of 2006.

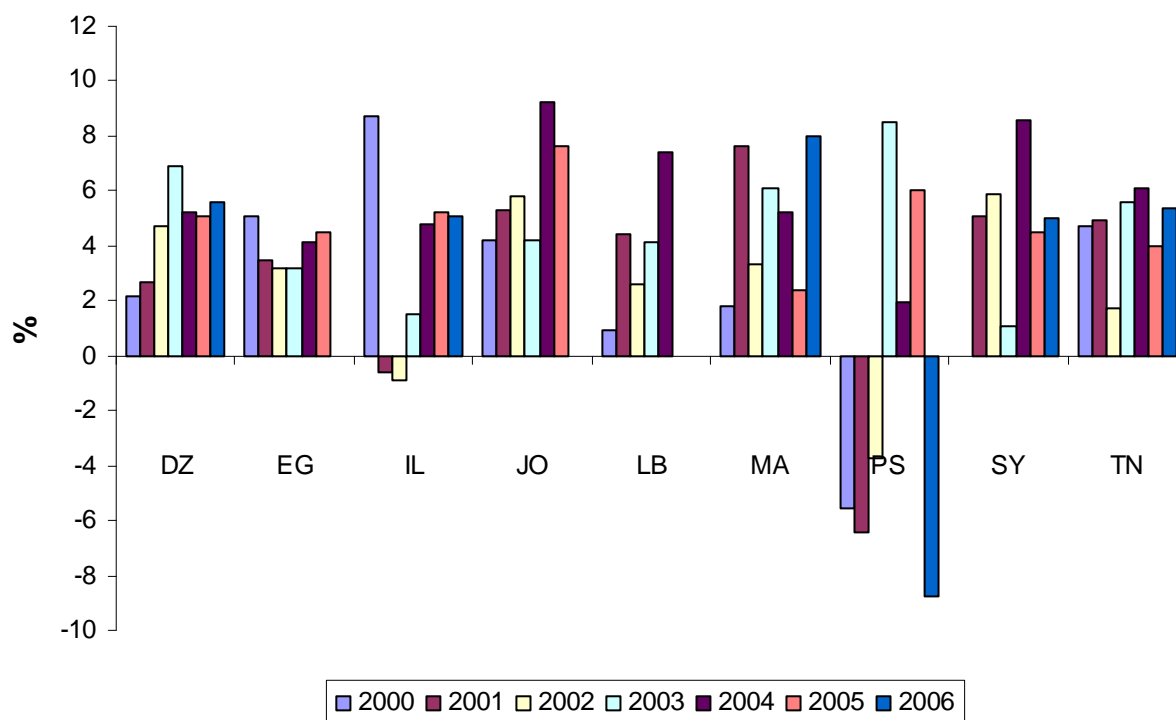
Table 1: GDP at current prices (Million EUR)

	2000	2001	2002	2003	2004	2005	2006
DZ	59 378	61 082	60 049	60 020	68 466	82 608	92 745
EG	105 295	100 647	88 344	61 252	62 751	74 998	:
IL	130 925	132 533	115 671	102 057	98 563	104 297	111 914
JO	9 657	10 055	10 198	9 058	9 208	10 179	11 368
LB	18 070	19 057	19 790	17 491	17 266	:	:
MA	40 236	41 719	42 930	44 108	45 375	47 419	52 098
PS	4 456	4 261	3 684	3 466	:	:	:
SY	20 488	22 596	21 858	19 173	19 857	22 440	26 168
TN	21 096	22 332	22 301	22 075	22 738	23 358	24 662

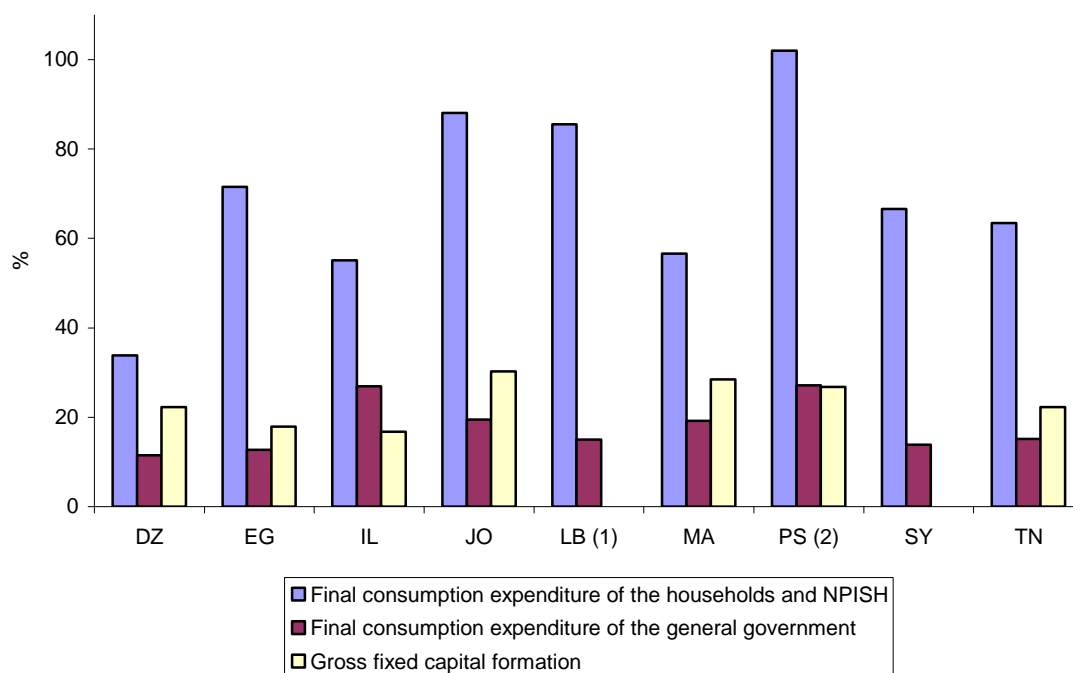
Table 2: Annual growth rate of the GDP at constant prices (%)

	2000	2001	2002	2003	2004	2005	2006
DZ	2.2	2.7	4.7	6.9	5.2	5.1	5.6
EG	5.1	3.5	3.2	3.2	4.1	4.5	:
IL	8.7	-0.6	-0.9	1.5	4.8	5.2	5.1
JO	4.2	5.3	5.8	4.2	9.2	7.6	:
LB	0.9	4.4	2.6	4.1	7.4	:	:
MA	1.8	7.6	3.3	6.1	5.2	2.4	8.0
PS	-5.6	-6.4	-3.8	8.5	2.0	6.0	-8.8
SY	:	5.1	5.9	1.1	8.6	4.5	5.0
TN	4.7	4.9	1.7	5.6	6.1	4.0	5.4

Graph 2: Annual growth rate of the GDP at constant prices (%)



Graph 3: GDP components at current prices, expenditure approach, 2005



Notes: (1) 2004 data. (2) 2003 data.

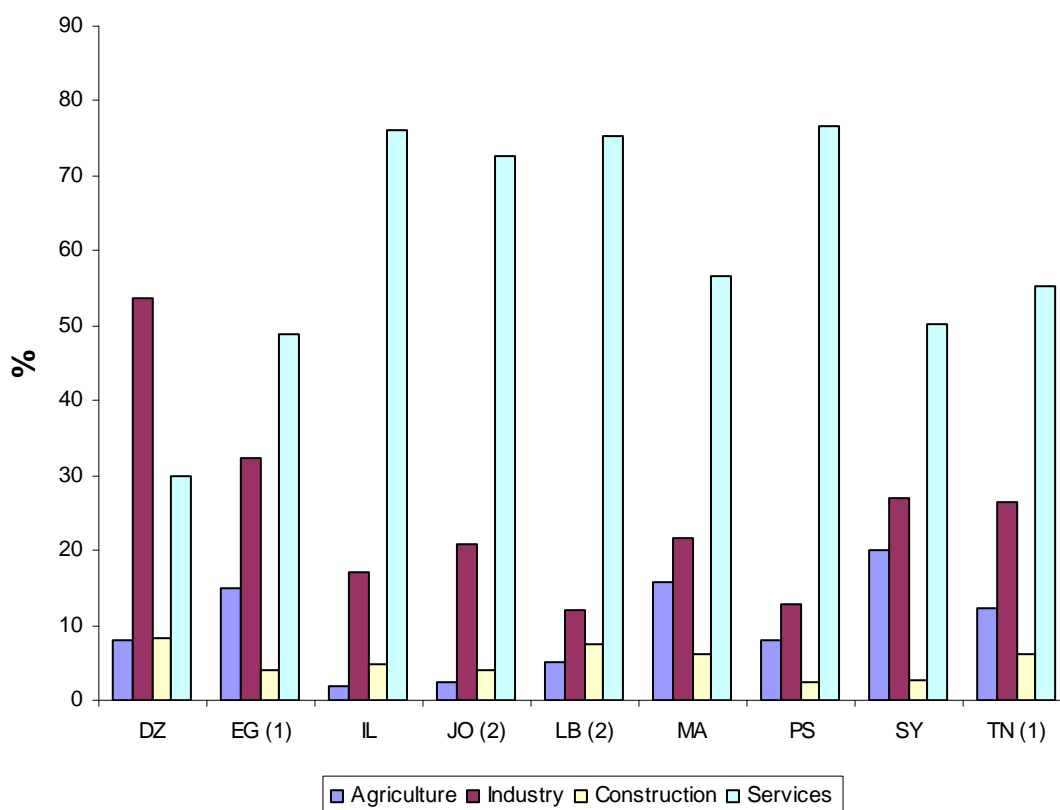
Table 3: GDP at current prices, expenditure approach

	Final consumption expenditure of the households and NPISH ¹								Final consumption expenditure of the general government								Gross fixed capital formation							
	2000	2001	2002	2003	2004	2005	2006		2000	2001	2002	2003	2004	2005	2006		2000	2001	2002	2003	2004	2005	2006	
DZ	41.6	43.7	44.0	40.5	38.6	33.8	31.8	:	13.6	14.8	15.5	14.8	13.8	11.5	11.3	:	20.7	22.8	24.6	24.1	24.1	22.3	23.1	:
EG	75.9	75.3	73.8	73.0	71.7	71.6	:	:	11.2	11.3	12.6	12.7	12.8	12.7	:	:	18.9	17.7	17.8	16.3	16.4	17.9	:	:
IL	52.6	53.9	54.9	55.2	55.6	55.1	54.8	:	26.8	28.2	29.7	28.9	27.5	26.9	26.9	:	19.1	18.4	17.9	17.1	16.9	16.8	17.3	:
JO	80.2	80.6	75.8	76.4	81.0	88.1	:	:	23.7	22.9	22.7	23.2	21.2	19.5	:	:	21.1	19.4	19.0	20.6	24.8	30.3	:	:
LB	85.6	85.3	84.2	85.1	85.5	:	:	:	17.6	17.6	17.1	16.7	15.0	:	:	:	:	:	:	:	:	:	:	:
MA	61.5	57.8	57.9	57.5	57.6	56.6	55.5	:	18.4	18.6	18.3	18.0	18.8	19.2	18.3	:	25.9	24.8	25.2	25.2	26.7	28.5	28.7	:
PS	95.6	96.9	98.8	102.0	:	:	:	:	25.8	31.7	30.4	27.1	:	:	:	:	33.1	27.6	17.0	26.8	:	:	:	:
SY	63.4	60.8	59.5	60.3	64.1	66.6	66.0	:	12.4	12.5	12.3	13.5	15.7	13.9	12.8	:	:	:	:	:	:	:	:	:
TN	60.7	61.1	62.7	63.1	63.2	63.5	:	:	15.6	15.6	15.9	15.7	15.2	15.1	:	:	26.0	26.2	25.4	23.4	22.8	22.3	:	:

	Change in stocks								Exports								Imports							
	2000	2001	2002	2003	2004	2005	2006		2000	2001	2002	2003	2004	2005	2006		2000	2001	2002	2003	2004	2005	2006	
DZ	2.9	4.0	6.1	6.2	9.1	9.3	6.5	:	42.1	36.7	35.4	38.3	40.1	47.3	49.0	:	20.8	22.0	25.6	23.9	25.7	24.1	21.7	:
EG	0.6	0.5	0.2	0.6	0.5	0.1	:	:	16.2	17.5	18.3	21.8	28.2	30.3	:	:	22.8	22.3	22.7	24.4	29.6	32.6	:	:
IL	1.8	2.0	0.7	-0.5	-0.4	0.9	0.3	:	38.2	34.1	36.0	37.7	43.1	44.6	44.5	:	38.5	36.6	39.2	38.4	42.7	44.3	43.8	:
JO	1.3	1.6	1.2	0.2	2.6	3.4	:	:	41.8	42.1	42.9	43.6	49.4	49.2	:	:	68.1	66.7	59.8	62.3	77.9	89.1	:	:
LB	:	:	:	:	:	:	:	:	13.6	15.1	16.3	16.7	19.9	:	:	:	37.1	41.0	35.6	37.7	42.1	:	:	:
MA	-0.4	1.3	0.8	2.2	2.1	1.7	2.9	:	27.9	29.3	29.9	28.3	29.2	31.6	33.0	:	33.3	31.9	32.1	31.3	34.4	37.8	38.4	:
PS	0.8	0.5	0.6	0.2	:	:	:	:	15.8	12.5	11.9	10.6	:	:	:	:	71.2	69.2	58.8	66.8	:	:	:	:
SY	:	:	:	:	:	:	:	:	36.1	36.9	39.8	32.4	40.6	41.5	40.1	:	29.2	30.5	31.9	29.5	37.8	39.5	36.4	:
TN	1.4	1.7	0.3	1.6	1.7	-0.3	:	:	44.5	47.7	45.2	43.7	46.8	49.6	50.1	:	48.2	52.3	49.5	47.5	49.7	50.1	52.1	:

Note: (1) NPISH: Non-Profit Institutions Serving Households

Graph 4: Gross value added by sector, 2006 (%)



Notes: (1) 2005 data. (2) 2004 data.

Table 4: Gross value added by sector (%)

	Agriculture								Industry								Construction								Services							
	2000	2001	2002	2003	2004	2005	2006		2000	2001	2002	2003	2004	2005	2006		2000	2001	2002	2003	2004	2005	2006		2000	2001	2002	2003	2004	2005	2006	
DZ	9.0	10.5	10.1	10.6	10.2	8.2	8.0	49.5	44.8	43.8	45.8	47.4	53.3	53.8	8.7	9.1	9.9	9.2	8.9	8.0	8.4	32.9	35.6	36.2	34.4	33.5	30.5	29.8				
EG	:	:	16.5	16.3	15.2	14.9	:	:	:	30.1	31.4	32.8	32.3	:	:	:	4.7	4.3	4.1	4.0	:	:	:	48.7	48.0	48.0	48.8	:				
IL	1.7	2.0	1.9	1.8	1.8	2.1	1.9	19.2	17.3	16.4	17.2	17.4	17.0	17.2	5.5	5.2	5.3	5.3	4.9	4.9	4.9	73.6	75.5	76.4	75.7	75.9	76.0	76.0				
JO	2.0	2.0	2.2	2.5	2.5	2.8	:	18.0	17.8	19.1	19.3	20.8	17.8	:	3.4	3.6	3.7	3.7	4.0	4.3	:	76.6	76.6	75.0	74.5	72.7	:	:				
LB	6.4	6.0	5.8	5.5	5.2	:	:	12.9	13.4	12.5	12.4	11.9	:	:	8.0	8.2	7.6	7.4	7.4	:	:	72.7	72.4	74.2	74.7	75.4	:	:				
MA	14.9	16.5	16.5	17.3	16.4	13.3	15.7	24.0	22.0	21.8	22.2	21.4	22.5	21.6	5.1	5.5	5.5	5.7	6.4	6.5	6.2	56.0	55.9	56.2	54.8	55.8	57.6	56.5				
PS	9.1	8.7	9.9	10.1	7.5	7.0	8.0	15.7	14.9	15.2	11.8	13.3	12.7	12.8	6.3	4.8	2.3	3.5	2.4	2.7	2.5	68.9	71.6	72.6	74.6	76.8	77.6	76.7				
SY	24.8	25.3	25.0	24.8	22.5	20.4	20.1	30.1	27.2	26.1	24.3	26.5	28.0	27.1	3.2	3.0	3.1	3.7	2.9	2.7	2.6	41.9	44.6	45.9	47.2	48.1	48.9	50.1				
TN	14.3	13.4	11.8	13.8	14.0	12.2	:	27.6	28.0	27.9	26.2	25.9	26.5	:	5.4	5.4	6.0	6.0	6.2	6.2	:	52.7	53.2	54.2	54.0	53.8	55.2	:				

Methodology

The Mediterranean Partner Countries (MPCs) endeavour to implement the SNA93, but it is a difficult and long-term process. A number of countries use at present the SNA93, while others compile their accounts on the basis of the SNA68, while preparing the shift to the SNA93.

Consequently, the data presented here have to be interpreted with caution, because comparability between the various countries cannot be fully ensured.

MPCs data were transmitted to the National Accounts sector of the MEDSTAT II programme in national currency. Conversion to euro was carried out using the annual average exchange rates between the national currency and the euro, provided by the MPCs.

Algeria (DZ): The data are compiled by the National Accounts Technical Directorate of the National Statistical Office according to the SNA68, based on the data available under the Algerian System of Economic Accounts. Algeria is currently preparing to move to the SNA93.

Egypt (EG): The National Accounts of Egypt are compiled by the National Accounts Department of the Ministry of Economic Development according to the SNA68; however accounts according to the SNA93 are also elaborated. Data refer to fiscal years (from July to the end June of the following year).

Israel (IL): The National Accounts of Israel are compiled by the Central Bureau of Statistics according to the SNA93.

Jordan (JO): The Jordanian National Accounts are compiled by the Department of Statistics according to the SNA68; however accounts according to the SNA93 are also elaborated.

Lebanon (LB): The estimation of the National Accounts of Lebanon is carried out by an ad-hoc Working Party attached to the Presidency of the Council of Ministers, according to the SNA93.

Morocco (MA): The Moroccan National Accounts are compiled by the National Accounts Directorate of the "Haut Commissariat au Plan", according to the SNA93.

Occupied Palestinian territory (PS): The National Accounts concerning the occupied Palestinian territory are compiled by the Central Bureau of Statistics according to the SNA93.

Syria (SY): The Syrian National Accounts are compiled by the Syrian Central Office of Statistics according to the SNA68.

Tunisia (TN): The Tunisian National Accounts are compiled by the Tunisian National Statistical Institute (INST) according to the SNA68; however the INST is preparing the move to the SNA93.

Symbol:

: not available

This document has been prepared with the co-operation of Mr. Pietro Benedetti, long-term expert in National Accounts in MEDSTAT II, the EU-funded regional Euro-Mediterranean Statistical Co-operation programme.

MEDSTAT II started in January 2006 and seeks to:

- Harmonise statistical methods in Mediterranean partner countries in line with European and international conventions and standards.
- Improve the comparability of data between the partner countries and with those from EU Member States and EFTA countries.
- Enhance the quality of services offered to users by the National Statistical Institutes and their partner organizations involved in the production of statistics.

Special attention is paid to **9 sectors**: Trade of goods and services, National Accounts, Social statistics, Energy, Agriculture (including Fisheries), Environment, Tourism, Transport and Migration.

MEDSTAT website: <http://ec.europa.eu/eurostat/medstat>

Contacts: EUROPEAID-INFO-MEDSTAT2@ec.europa.eu

Further information

European Statistical Data Support:

Contact details for this support network can be found on our Internet site:

<http://ec.europa.eu/eurostat/>