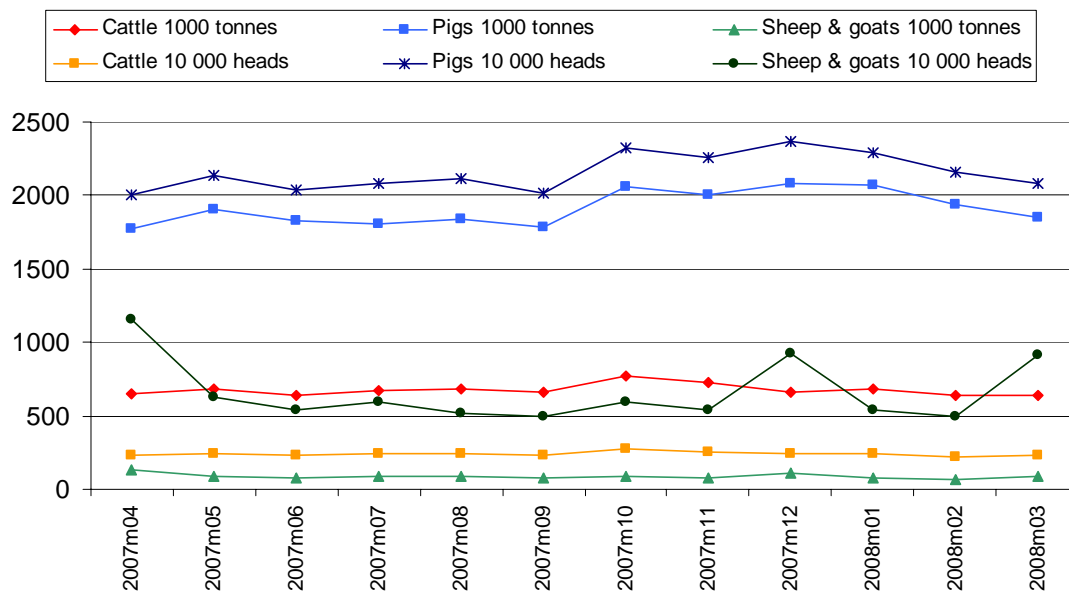


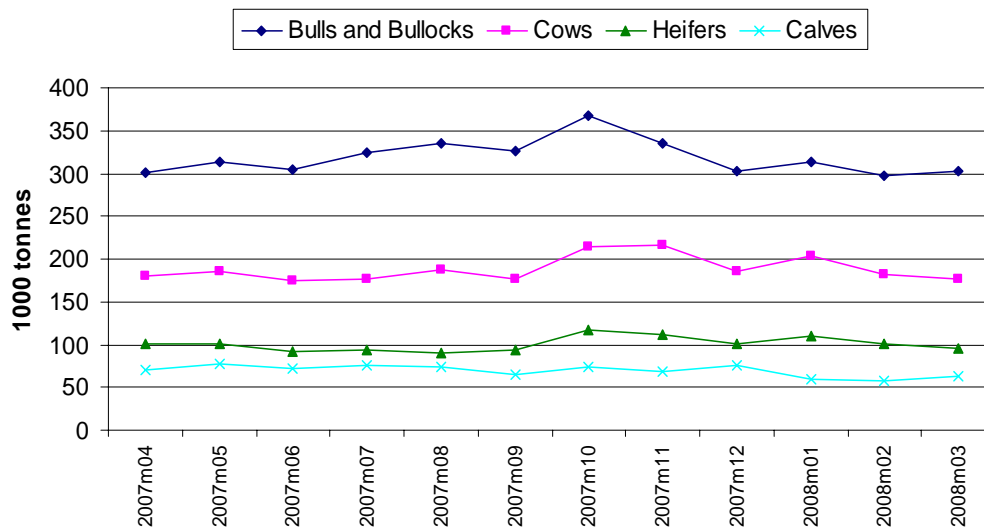
EU cattle, pigs, sheep and goats: monthly slaughter statistics to March 2008

Cattle, pigs, sheep and goats slaughtered (tonnes and heads)



Source: Eurostat

Cattle slaughtered by animal category (1000 tonnes)



Source: Eurostat

Total cattle slaughtered (1000 tonnes)

	2007m04	2007m05	2007m06	2007m07	2007m08	2007m09	2007m10	2007m11	2007m12	2008m01	2008m02	2008m03
BE	22.34	22.61	22.25	20.52	23.60	21.45	23.50	25.25	24.14	22.29	20.81	22.58
BG	0.38	0.42	0.51	0.58	0.59	0.57	0.63	0.62	0.55	0.51	0.46	0.44
CZ	6.58	6.82	6.21	6.34	6.80	6.21	7.43	6.98	5.92	7.00	6.49	6.41
DK	9.53	11.03	11.38	7.47	11.46	11.47	12.98	12.14	8.79	11.30	9.80	9.20
DE	90.84	93.52	89.52	90.76	100.25	95.83	115.27	113.45	94.28	102.90	100.70	97.08
EE	1.14	1.42	1.16	1.05	1.13	1.15	1.46	1.37	1.05	1.28	1.16	1.11
EL	4.59	4.80	5.07	5.23	5.16	4.83	4.80	4.60	5.16	4.57	4.42	4.33
ES	50.69	55.08	53.96	56.61	56.11	53.02	60.87	58.57	57.57	54.19	51.72	51.30
FR	127.70	135.31	124.62	125.11	136.63	120.54	137.63	125.00	116.61	127.76	116.92	122.12
IE	47.20	48.80	40.70	45.00	49.80	50.50	57.50	59.60	38.10	45.30	44.00	40.30
IT	76.78	85.64	87.49	88.43	92.15	95.44	108.26	100.13	103.60	94.93	86.15	89.37
CY	0.26	0.35	0.33	0.30	0.31	0.32	0.38	0.34	0.32	0.42	0.37	0.28
LV	1.82	1.93	1.58	1.79	1.86	1.99	2.37	2.16	1.81	1.69	1.53	1.61
LT	4.16	5.09	4.62	4.87	5.20	4.90	6.02	4.80	3.42	3.62	3.37	3.08
LU	0.72	0.73	0.75	0.71	0.73	0.80	0.86	0.90	0.73	0.83	0.71	0.76
HU	2.72	3.13	2.83	2.89	3.02	2.92	3.06	2.79	2.27	3.09	3.02	2.70
MT	0.13	0.11	0.10	0.12	0.11	0.10	0.12	0.11	0.13	0.12	0.12	0.09
NL	29.36	33.50	30.53	27.69	32.32	30.48	36.61	34.78	31.23	27.85	26.40	27.16
AT	16.55	17.35	15.35	16.55	18.13	18.00	21.19	20.15	18.54	19.15	17.93	17.74
PL	27.89	32.00	29.91	27.85	30.55	31.70	34.90	30.97	26.07	29.53	32.43	31.76
PT	7.74	7.96	7.11	8.38	8.46	6.73	8.25	7.40	8.21	8.19	7.24	8.15
RO	18.50	19.10	17.50	25.30	21.20	14.40	14.90	16.40	30.90	10.40	11.90	13.60
SI	3.02	2.92	2.65	2.64	2.74	2.72	3.46	4.25	3.76	2.87	2.84	2.99
SK	1.76	2.05	1.86	1.82	1.94	1.85	2.05	2.08	1.57	1.98	1.83	1.57
FI	7.03	7.54	6.62	6.82	7.59	7.09	8.51	8.26	5.65	7.69	6.56	6.07
SE	10.49	12.00	10.17	10.19	10.99	10.96	12.91	12.41	8.51	11.96	10.31	9.62
UK	82.56	67.18	69.11	83.70	58.09	66.95	87.78	75.61	65.65	83.10	70.57	65.67
EU	652.47	678.37	643.89	668.70	686.91	662.96	773.69	731.11	664.53	684.50	639.77	637.09

Source: Eurostat

Total pigs slaughtered (1000 tonnes)

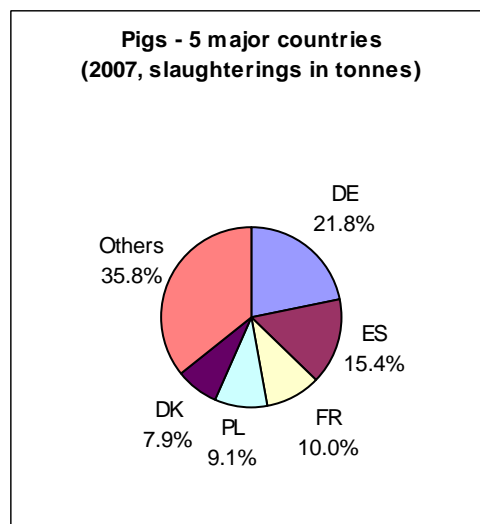
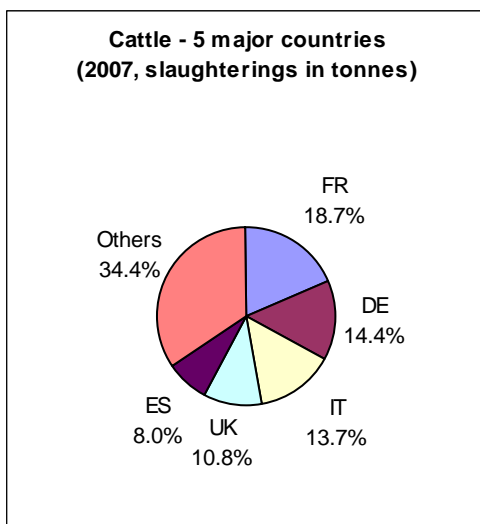
	2007m04	2007m05	2007m06	2007m07	2007m08	2007m09	2007m10	2007m11	2007m12	2008m01	2008m02	2008m03
BE	88.32	89.37	86.92	82.28	90.38	85.12	97.58	92.02	79.87	97.12	88.94	81.17
BG	3.89	3.71	3.46	3.31	3.38	3.21	3.21	3.23	4.10	2.59	3.11	3.41
CZ	30.31	29.91	27.98	27.49	29.11	27.49	33.69	33.49	30.03	29.78	30.17	30.38
DK	122.07	142.70	157.12	143.91	157.29	129.23	168.66	168.86	142.20	168.60	171.70	139.10
DE	398.08	402.67	396.53	396.66	416.12	412.73	461.14	449.18	407.99	452.90	406.68	415.02
EE	2.57	3.30	3.24	3.09	3.01	2.85	3.67	3.66	3.77	3.70	3.57	3.42
EL	8.81	8.44	8.86	9.02	9.28	8.95	8.71	10.08	19.54	10.70	9.09	7.94
ES	261.26	305.65	283.89	282.48	258.10	266.48	318.68	301.76	341.17	336.89	312.88	288.63
FR	184.50	183.13	177.90	184.96	192.38	178.44	207.79	193.59	184.01	212.51	193.33	178.49
IE	16.80	18.30	16.10	16.80	16.90	16.20	17.10	18.20	14.10	19.00	18.10	16.30
IT	123.99	145.54	123.63	125.69	124.34	128.91	147.24	142.80	136.60	148.63	131.49	132.60
CY	4.12	5.17	4.70	5.08	4.96	4.45	5.24	4.41	4.79	5.48	5.35	3.96
LV	3.58	3.49	3.70	2.93	2.78	2.80	3.13	3.60	4.33	3.24	3.03	3.35
LT	8.50	8.31	8.06	8.00	8.20	8.01	8.92	8.57	8.27	7.45	7.60	7.36
LU	0.84	0.85	0.82	0.83	0.85	0.83	0.96	0.88	0.76	0.85	0.75	0.81
HU	38.70	41.69	34.99	34.50	35.25	35.46	44.39	42.14	49.51	48.68	44.38	41.54
MT	0.55	0.79	0.62	0.69	0.74	0.65	0.79	0.76	0.76	0.74	0.62	0.61
NL	94.99	104.86	100.40	101.95	110.82	103.36	121.06	117.67	98.10	117.60	120.05	112.68
AT	43.77	45.01	41.11	43.04	43.32	41.52	49.70	46.58	43.90	47.96	43.58	43.77
PL	172.62	193.31	188.87	154.27	173.39	170.92	170.97	172.00	148.35	165.44	173.67	179.03
PT	28.55	29.72	26.84	29.18	31.35	28.06	34.35	32.17	32.84	33.81	29.60	30.76
RO	23.90	27.80	25.20	30.20	24.00	20.30	24.80	37.10	217.30	26.20	21.80	21.40
SI	2.94	2.90	2.63	2.69	2.61	2.52	2.82	2.57	3.29	2.75	2.79	2.76
SK	8.89	9.18	8.22	7.86	8.02	7.93	10.29	11.44	11.29	10.21	9.47	9.22
FI	16.74	18.45	16.93	17.91	18.14	16.59	19.42	18.94	16.02	19.11	18.34	16.97
SE	20.53	23.47	20.90	22.47	24.01	19.65	23.88	23.76	18.11	24.59	24.01	21.15
UK	67.63	53.80	56.68	68.85	50.58	58.94	76.46	67.19	58.56	72.21	60.00	56.71
EU	1777.41	1901.51	1826.28	1806.13	1839.30	1781.59	2064.66	2006.63	2079.54	2068.72	1934.12	1848.54

Source: Eurostat

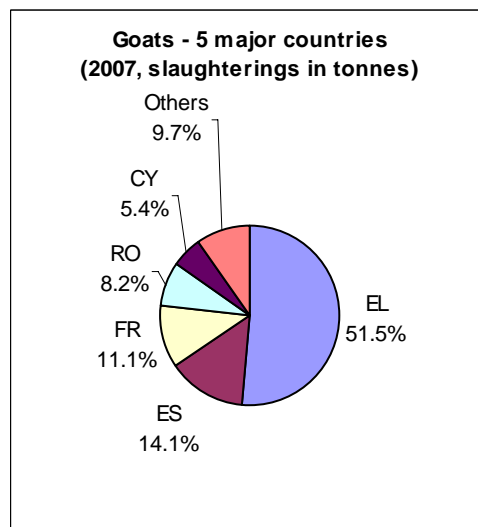
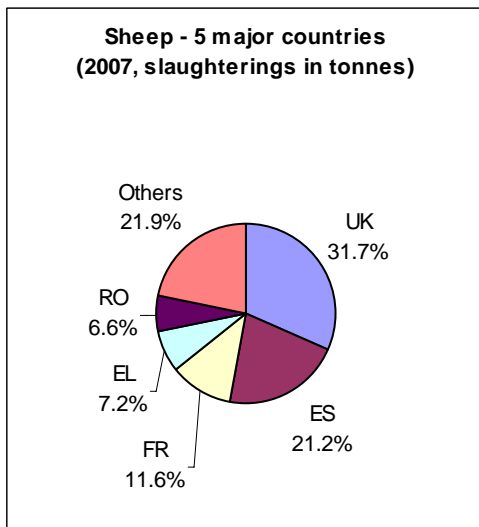
Total sheep and goats slaughtered (1000 tonnes)

	2007m04	2007m05	2007m06	2007m07	2007m08	2007m09	2007m10	2007m11	2007m12	2008m01	2008m02	2008m03
BE	0.13	0.10	0.09	0.10	0.12	0.13	0.15	0.10	0.20	0.09	0.08	0.10
BG	1.05	0.63	0.54	0.82	1.13	0.86	0.75	0.46	0.91	0.11	0.37	1.49
CZ	0.12	0.09	0.09	0.17	0.17	0.18	0.18	0.18	0.17	0.10	0.10	0.14
DK	0.13	0.09	0.08	0.08	0.14	0.18	0.25	0.25	0.22	0.10	0.10	0.10
DE	3.80	2.95	2.62	2.43	2.88	3.31	4.22	4.73	6.64	3.58	2.31	3.50
EE	0.01	0.04	0.03	0.04	0.05	0.05	0.08	0.08	0.07	0.01	0.00	0.00
EL	25.16	11.54	7.18	6.37	6.30	5.17	5.68	6.27	10.91	9.17	8.54	9.62
ES	20.30	20.27	19.64	19.67	19.01	15.77	17.08	15.23	24.17	12.17	12.88	16.32
FR	13.28	12.09	10.67	10.97	11.00	9.12	9.97	8.15	10.88	8.04	8.70	12.32
IE	4.70	5.90	5.50	6.10	7.90	6.90	7.30	5.20	4.60	4.30	3.50	3.80
IT	6.18	3.55	3.56	3.34	3.91	2.93	4.38	4.46	14.94	4.31	3.46	7.49
CY	1.03	0.56	0.58	0.73	0.88	0.54	0.49	0.27	0.95	0.35	0.44	0.33
LV	0.03	0.03	0.03	0.03	0.04	0.06	0.06	0.08	0.07	0.06	0.06	0.06
LT	0.06	0.06	0.06	0.07	0.07	0.07	0.07	0.07	0.07	0.06	0.06	0.06
LU	0.01	0.00	0.00	0.01	0.00	0.01	0.01	0.01	0.01	0.00	0.00	0.00
HU	0.08	0.08	0.08	0.08	0.05	0.05	0.05	0.05	0.04	0.05	0.06	0.07
MT	0.00	0.00	0.00	0.00	0.00	0.00	0.00	0.00	0.00	0.00	0.00	0.00
NL	1.38	1.57	1.74	1.19	1.30	1.46	1.59	1.24	1.22	1.08	1.03	1.21
AT	0.00	0.00	0.00	0.00	0.00	0.00	0.00	0.00	0.00	0.41	0.41	1.07
PL	0.11	0.26	0.19	0.23	0.16	0.09	0.09	0.09	0.07	0.05	0.08	0.10
PT	1.49	0.90	1.13	0.96	0.99	0.76	0.88	0.79	2.41	0.74	0.73	2.46
RO	27.00	5.60	4.30	7.00	4.70	3.90	5.70	4.40	5.80	1.40	1.40	4.20
SI	0.02	0.01	0.01	0.01	0.01	0.01	0.01	0.01	0.01	0.01	0.01	0.02
SK	0.17	0.05	0.04	0.05	0.05	0.06	0.06	0.07	0.13	0.04	0.06	0.51
FI	0.02	0.04	0.05	0.05	0.06	0.08	0.11	0.08	0.05	0.07	0.05	0.07
SE	0.23	0.27	0.27	0.30	0.44	0.56	0.67	0.53	0.36	0.31	0.25	0.32
UK	29.25	22.93	23.76	32.23	21.89	27.05	33.60	29.33	30.16	33.08	24.89	24.20
EU	135.73	89.62	82.25	93.00	83.24	79.28	93.42	82.11	115.08	79.67	69.58	89.55

Source: Eurostat



Source: Eurostat



Source: Eurostat

Methodology

Abbreviations:

Belgium	BE	Ireland	IE	Austria	AT
Bulgaria	BG	Italy	IT	Poland	PL
Czech Republic	CZ	Cyprus	CY	Romania	RO
Denmark	DK	Latvia	LV	Portugal	PT
Germany	DE	Lithuania	LT	Slovenia	SI
Estonia	EE	Luxembourg	LU	Slovak Republic	SK
Greece	EL	Hungary	HU	Finland	FI
Spain	ES	Malta	MT	Sweden	SE
France	FR	Netherlands	NL	United Kingdom	UK

EU European Union

Further information

European Statistical Data Support:

Contact details for this support network can be found on our Internet site:

<http://ec.europa.eu/eurostat/>

Data: [Estat Website/Agriculture, forestry and fisheries/Agriculture/Agricultural products/Animal production](#)

If you wish to receive an exhaustive data extraction on monthly animal production statistics via e-mail, please send a request to: Estat-Animal-Products@ec.europa.eu

Manuscript completed on: 11.07.2008

Data extracted on: 07.07.2008

ISSN 1977-0340

Catalogue number: KS-QA-08-028-EN-N

© European Communities, 2008