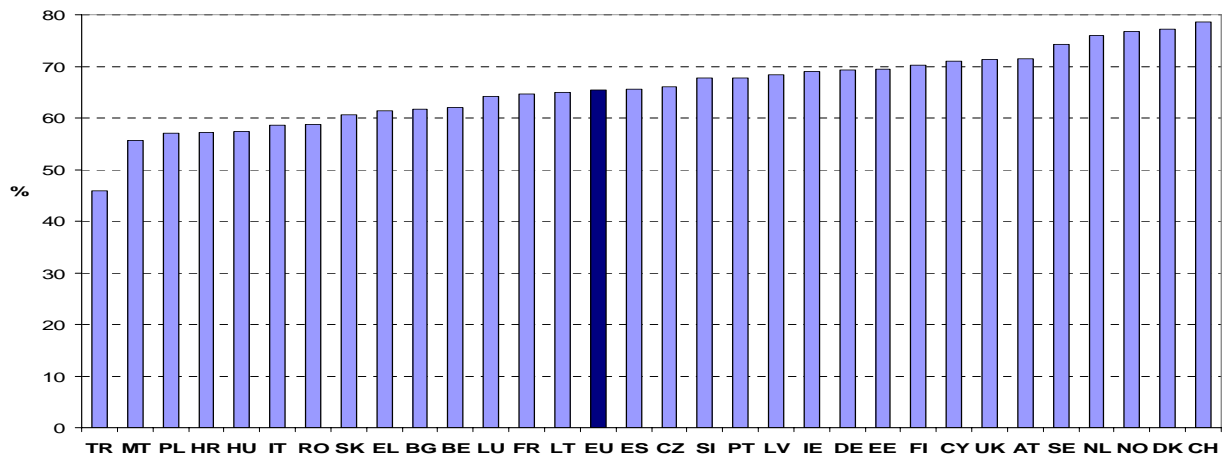


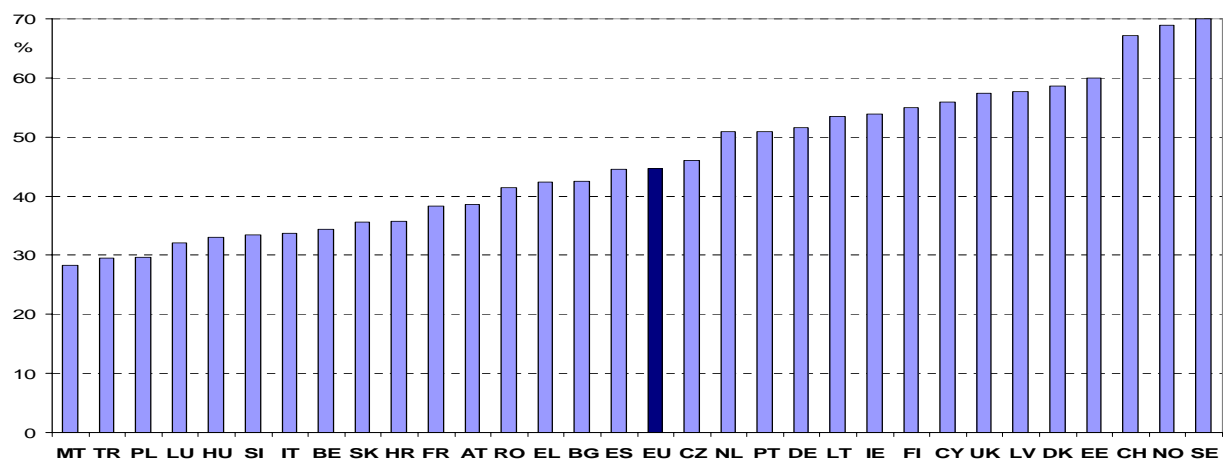
European Union Labour Force Survey-Annual results 2007

Chart 1: Total employment rate¹ (persons aged 15 to 64 years) in 2007



Source: Eurostat, EU-LFS

Chart 2: Employment rate¹ of older workers (persons aged 55 to 64 years) in 2007

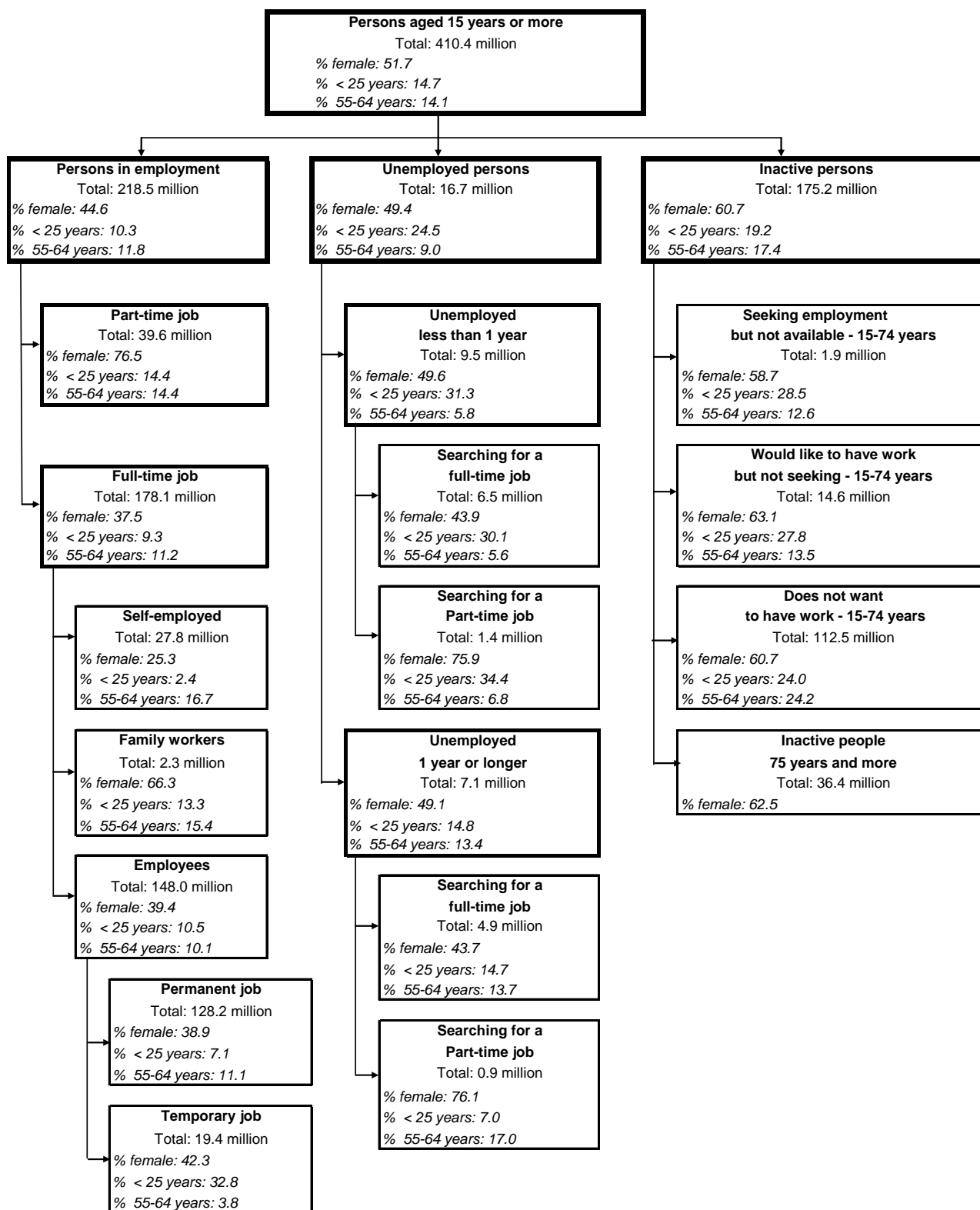


Source: Eurostat, EU-LFS

(1) Employment rates represent employed persons as a percentage of the same age population.

Notes: In chart 1 and chart 2, EU refers to EU-27

Work status of persons aged 15 years or more, EU-27, 2007 (1)



notes: (1) Due to non-response, certain sub-totals may not exactly sum up to the corresponding aggregate

Table 1 - Population employed 15 and more and employment rates, 2007

	Total employment (1000)				Total employment rates						Part-time employment as a share of total employment (%)			
	Total	Confidence limit	Men	Women	Age 15-64			Age 55-64			Age 15-64			
					Total	Confidence limit	Men	Women	Total	Men	Women	Total	Men	Women
EU-27	218 451	± 372	121 026	97 425	65.4	± 0.1	72.5	58.3	44.7	53.9	36.0	18.2	7.7	31.2
EA13	139 772	± 304	78 394	61 378	65.7	± 0.1	73.4	58.0	43.3	52.3	34.7	19.7	7.5	35.2
EA15	140 306	± 305	78 708	61 597	65.7	± 0.1	73.4	58.0	43.3	52.4	34.7	19.6	7.5	35.1
BE	4 380	± 29	2 444	1 937	62.0	± 0.4	68.7	55.3	34.4	42.9	26.0	22.1	7.5	40.6
BG	3 253	± 66	1 732	1 521	61.7	± 1.2	66.0	57.6	42.6	51.8	34.5	1.7	1.3	2.1
CZ	4 922	± 32	2 806	2 116	66.1	± 0.4	74.8	57.3	46.0	59.6	33.5	5.0	2.3	8.5
DK	2 804	± 10	1 494	1 310	77.1	± 0.3	81.0	73.2	58.6	64.9	52.4	24.1	13.5	36.2
DE	38 210	± 243	20 752	17 457	69.4	± 0.4	74.7	64.0	51.5	59.7	43.6	26.0	9.4	45.8
EE	655	± 14	330	325	69.4	± 1.4	73.2	65.9	60.0	59.4	60.5	8.2	4.3	12.1
IE	2 112	± 18	1 204	908	69.1	± 0.6	77.4	60.6	53.8	67.9	39.6	18.0	7.2	32.3
EL	4 510	± 75	2 760	1 750	61.4	± 1.0	74.9	47.9	42.4	59.1	26.9	5.6	2.7	10.1
ES	20 356	± 60	11 987	8 369	65.6	± 0.2	76.2	54.7	44.6	60.0	30.0	11.8	4.1	22.8
FR	25 642	± 101	13 619	12 023	64.6	± 0.3	69.3	60.0	38.3	40.5	36.2	17.2	5.7	30.2
IT	23 222	± 80	14 057	9 165	58.7	± 0.2	70.7	46.6	33.8	45.1	23.0	13.6	5.0	26.9
CY	378	± 9	209	168	71.0	± 1.7	80.0	62.4	55.9	72.5	40.3	7.3	4.4	10.9
LV	1 118	± 12	573	545	68.3	± 0.7	72.5	64.4	57.7	64.6	52.4	6.4	4.9	8.0
LT	1 534	± 35	778	757	64.9	± 1.5	67.9	62.2	53.4	60.8	47.9	8.6	7.0	10.2
LU	203	± 2	114	89	64.2	± 0.6	72.3	56.1	32.0	35.6	28.6	17.8	2.6	37.2
HU	3 926	± 28	2 143	1 783	57.3	± 0.4	64.0	50.9	33.1	41.7	26.2	4.1	2.8	5.8
MT	156	± 2	104	51	55.7	± 0.8	74.2	36.9	28.3	46.2	(11.8)	11.1	4.4	24.9
NL	8 464	± 43	4 631	3 832	76.0	± 0.4	82.2	69.6	50.9	61.5	40.1	46.8	23.6	75.0
AT	4 028	± 32	2 208	1 819	71.4	± 0.6	78.4	64.4	38.6	49.8	28.0	22.6	7.2	41.2
PL	15 240	± 98	8 403	6 838	57.0	± 0.4	63.6	50.6	29.7	41.4	19.4	9.2	6.6	12.5
PT	5 170	± 54	2 789	2 380	67.8	± 0.7	73.8	61.9	50.9	58.6	44.0	12.1	8.0	16.9
RO	9 353	± 121	5 116	4 237	58.8	± 0.8	64.8	52.8	41.4	50.3	33.6	9.7	9.2	10.4
SI	985	± 15	540	446	67.8	± 1.1	72.7	62.6	33.5	45.3	22.2	9.3	7.7	11.3
SK	2 358	± 17	1 322	1 036	60.7	± 0.4	68.4	53.0	35.6	52.5	21.2	2.6	1.1	4.5
FI	2 492	± 12	1 289	1 202	70.3	± 0.3	72.1	68.5	55.0	55.1	55.0	14.1	9.3	19.3
SE	4 541	± 17	2 390	2 150	74.2	± 0.3	76.5	71.8	70.0	72.9	67.0	25.0	11.8	40.0
UK	28 441	± 116	15 231	13 210	71.3	± 0.3	77.3	65.5	57.4	66.3	49.0	25.5	10.9	42.3
HR	1 614	± 70	897	717	57.1	± 2.5	64.4	50.0	35.8	48.4	24.2	8.6	6.4	11.3
TR	21 207	± 208	15 675	5 532	45.8	± 0.4	68.0	23.8	29.5	43.0	16.5	8.8	4.9	19.7
NO	2 434	± 26	1 281	1 153	76.8	± 0.8	79.5	74.0	69.0	73.8	64.0	28.2	13.9	44.1
EEA30	220 885	± 366	122 307	98 578	65.5	± 0.1	72.6	58.5	44.9	54.1	36.2	18.3	7.8	31.3
CH	4 122	± 48	2 259	1 863	78.6	± 0.9	85.6	71.6	67.2	76.4	58.1	33.5	12.4	59.0

Source: Eurostat, EU-LFS

Table 2 – Employed persons aged 15 and more by economic activity (main job), 2007

(%)	Total				Men				Women			
	agriculture	industry	market services	non-market services	agriculture	industry	market services	non-market services	agriculture	industry	market services	non-market services
EU-27	5.6	27.7	37.3	29.4	6.3	38.2	37.0	18.5	4.7	14.6	37.8	42.9
EA13	4.0	27.5	38.3	30.2	4.8	38.3	37.6	19.3	3.1	13.7	39.2	44.0
EA15	4.0	27.5	38.4	30.2	4.8	38.3	37.6	19.3	3.1	13.7	39.3	44.0
BE	1.9	24.4	37.3	36.5	2.3	35.0	38.7	24.0	1.3	11.0	35.5	52.2
BG	7.5	35.5	34.1	22.9	9.2	41.6	33.3	15.9	5.7	28.5	35.0	30.8
CZ	3.6	40.2	32.8	23.4	4.4	50.3	31.0	14.3	2.5	26.8	35.1	35.5
DK	3.0	23.2	36.9	36.9	4.2	32.7	40.7	22.4	1.5	12.4	32.5	53.5
DE	2.2	29.8	37.1	30.8	2.8	41.4	35.5	20.3	1.6	16.0	39.1	43.3
EE	4.7	35.2	34.8	25.2	6.4	48.2	32.5	12.9	3.0	22.0	37.2	37.7
IE	5.6	27.2	39.8	27.4	8.8	39.8	36.7	14.8	1.3	10.6	44.0	44.1
EL	11.5	22.5	39.7	26.3	11.0	30.5	38.8	19.7	12.4	9.9	41.0	36.7
ES	4.5	29.3	40.6	25.5	5.6	41.6	36.9	15.8	3.0	11.6	45.9	39.4
FR	3.4	23.3	37.2	36.1	4.6	33.6	39.0	22.8	2.1	11.5	35.2	51.1
IT	4.0	30.2	39.4	26.4	4.6	39.1	38.8	17.5	3.1	16.5	40.4	40.1
CY	4.4	22.5	43.5	29.6	6.0	32.9	40.6	20.6	2.4	9.7	47.2	40.8
LV	9.9	28.5	36.9	24.7	12.3	40.5	32.7	14.5	7.3	15.9	41.4	35.3
LT	10.4	30.7	32.9	26.0	12.9	41.2	31.9	14.0	7.9	19.8	33.9	38.5
LU	1.8	16.9	42.1	39.2	2.4	25.9	42.9	28.9	(1.2)	5.5	41.0	52.4
HU	4.6	32.7	36.3	26.5	6.5	42.2	35.0	16.3	2.3	21.2	37.8	38.7
MT	(1.8)	26.2	43.3	28.7	(2.5)	32.4	42.3	22.8	:	13.3	45.5	40.8
NL	3.1	20.0	41.6	35.2	4.1	29.9	44.1	21.9	2.0	8.2	38.6	51.3
AT	5.7	27.3	40.9	26.1	5.6	39.1	37.6	17.7	5.9	12.9	44.8	36.3
PL	14.7	30.7	31.8	22.7	15.2	41.2	30.1	13.5	14.2	17.9	33.8	34.1
PT	11.6	30.5	32.6	25.3	11.1	40.9	32.9	15.0	12.2	18.3	32.2	37.3
RO	29.5	31.4	23.0	16.0	28.3	37.0	22.7	12.0	31.0	24.7	23.4	20.9
SI	9.9	35.2	31.7	23.2	9.6	45.4	30.4	14.6	10.2	23.0	33.3	33.5
SK	4.2	39.4	32.3	24.1	5.7	51.2	29.6	13.5	2.2	24.3	35.7	37.7
FI	4.5	25.7	37.3	32.4	6.4	39.0	38.4	16.3	2.6	11.5	36.2	49.7
SE	2.3	21.6	38.2	37.9	3.4	32.9	43.6	20.1	0.9	9.1	32.3	57.6
UK	1.4	22.1	42.0	34.5	1.9	33.0	44.0	21.1	0.8	9.5	39.8	50.0
HR	13.0	30.6	34.7	21.7	12.0	40.3	33.1	14.6	14.3	18.5	36.7	30.6
TR	26.4	25.5	31.2	16.8	19.1	29.3	35.7	15.9	47.4	14.8	18.4	19.4
NO	2.9	21.2	37.1	38.8	4.3	33.0	40.8	21.9	1.3	8.0	33.0	57.6
EEA30	5.6	27.6	37.3	29.5	6.3	38.1	37.1	18.5	4.7	14.5	37.7	43.1
CH	4.0	22.5	40.7	32.7	5.0	32.3	42.0	20.7	2.8	10.7	39.2	47.3

Source: Eurostat, EU-LFS

Notes :

- The breakdown of employed persons by economic activity is based on the classification NACE Rev 1.1 (sections A and B for agriculture, C to F industry, G to K for market services, and L to Q for non market services).

- BG: due to the very high proportion of persons employed in agriculture in addition to another main occupation, the Labour Force Survey does not provide a precise estimate of total employment in this sector.

Table 3 - Employed persons aged 15 and more by occupation in the main job, 2007

Total				Men				Women				(%)
Skilled non manual	Low skilled non manual	Skilled manual	Elementary occup.	Skilled non manual	Low skilled non manual	Skilled manual	Elementary occup.	Skilled non manual	Low skilled non manual	Skilled manual	Elementary occup.	
38.3	24.4	27.4	9.9	36.7	13.6	40.9	8.7	40.2	37.7	10.8	11.3	EU-27
39.3	24.8	25.9	10.1	38.0	14.2	39.6	8.2	40.9	38.0	8.5	12.5	EA13
39.3	24.8	25.9	10.1	37.9	14.3	39.6	8.2	40.9	38.1	8.5	12.5	EA15
44.8	25.7	19.9	9.5	44.4	16.0	31.4	8.2	45.4	37.8	5.6	11.2	BE
28.7	23.3	35.1	12.9	24.8	15.3	46.2	13.7	33.1	32.4	22.6	11.9	BG
40.1	18.8	35.7	5.3	36.3	9.9	49.7	4.2	45.2	30.5	17.4	6.9	CZ
43.9	25.7	19.3	11.0	43.6	12.6	31.9	11.9	44.3	40.5	5.1	10.1	DK
41.9	25.1	24.4	8.5	40.0	13.3	39.4	7.4	44.3	39.0	6.9	9.8	DE
40.2	16.8	32.7	10.3	34.0	6.5	51.4	8.1	46.4	27.1	13.9	12.6	EE
37.8	30.4	22.6	9.1	36.9	15.9	36.8	10.4	39.1	49.6	3.8	7.5	IE
33.6	25.5	34.2	6.7	31.8	18.0	45.3	4.9	36.3	37.3	17.0	9.5	EL
31.8	24.8	28.3	15.1	29.9	15.1	43.4	11.6	34.6	38.7	6.8	19.9	ES
40.3	25.0	24.9	9.8	41.2	12.2	40.3	6.3	39.3	39.4	7.8	13.6	FR
40.7	22.6	27.5	9.2	37.8	15.6	38.3	8.2	45.0	33.2	11.2	10.6	IT
30.9	31.3	22.8	15.1	31.3	19.6	38.3	10.8	30.4	45.7	3.7	20.2	CY
38.3	17.4	32.1	12.3	29.6	8.0	49.8	12.6	47.3	27.2	13.5	11.9	LV
36.7	16.7	36.1	10.5	28.0	8.2	53.7	10.2	45.6	25.5	18.2	10.7	LT
45.1	24.9	18.1	11.8	43.9	17.9	30.1	8.2	46.7	33.8	3.0	16.5	LU
34.0	24.5	33.7	7.8	28.5	15.1	50.0	6.3	40.6	35.6	14.3	9.5	HU
34.9	28.6	23.8	12.8	33.6	21.1	30.9	14.4	37.5	43.5	9.3	9.7	MT
48.1	26.5	16.1	9.3	48.6	15.2	27.1	9.2	47.6	39.9	3.0	9.5	NL
36.9	26.6	25.2	11.3	38.0	14.5	38.3	9.2	35.6	41.1	9.5	13.8	AT
32.7	19.3	40.1	7.8	26.7	12.1	55.0	6.3	40.1	28.2	22.1	9.6	PL
24.2	24.3	38.7	12.9	24.5	15.3	51.7	8.4	23.7	34.7	23.5	18.1	PT
21.5	14.6	52.6	11.3	18.7	8.9	60.3	12.1	24.7	21.4	43.4	10.5	RO
37.3	20.4	34.6	7.7	32.5	14.5	47.1	5.9	43.0	27.5	19.6	9.9	SI
34.9	20.6	35.9	8.6	28.8	11.3	52.0	7.9	42.7	32.4	15.4	9.5	SK
44.3	22.5	25.0	8.2	43.7	8.6	40.8	6.8	44.9	37.4	8.0	9.7	FI
44.6	27.8	21.6	6.0	43.6	14.5	36.4	5.5	45.7	42.4	5.3	6.6	SE
42.1	30.2	16.9	10.7	44.4	14.0	29.1	12.4	39.5	48.8	3.0	8.7	UK
29.1	27.0	36.0	7.9	28.7	17.1	48.0	6.2	29.6	39.3	21.2	9.9	HR
21.1	17.9	46.8	14.3	21.9	17.7	47.4	13.0	18.6	18.4	45.2	17.9	TR
43.0	31.4	20.9	4.8	42.1	19.3	35.4	3.2	43.9	44.7	4.8	6.6	NO
38.3	24.5	27.3	9.8	36.8	13.7	40.8	8.7	40.2	37.8	10.8	11.3	EEA30
46.0	24.7	23.7	5.6	46.8	13.7	35.7	3.9	45.0	38.1	9.2	7.7	CH

Source: Eurostat, EU-LFS

Note: The breakdown of employed persons by occupation is based on the classification ISCO 88-COM (groups 1 to 3 for skilled non manual, 4 to 5 for low skilled non manual, 6 to 8 for skilled manual and 9 for elementary occupations).

Table 4 – Employees aged 15 and more, 2007

	Number of employees (1000)			Usual hours worked per week						% employees with limited duration contract		
				Full time			Part time					
	Total	Men	Women	Total	Men	Women	Total	Men	Women	Total	Men	Women
EU-27	181 558	96 657	84 900	40.5	41.3	39.3	20.2	19.2	20.4	14.5	13.9	15.2
EA13	116 713	62 914	53 800	39.9	40.6	38.7	20.1	19.2	20.3	16.8	15.9	17.7
EA15	117 148	63 155	53 993	39.9	40.6	38.7	20.1	19.2	20.3	16.7	15.9	17.7
BE	3 731	2 018	1 713	39.2	39.8	37.9	23.8	24.3	23.6	8.6	6.8	10.8
BG	2 849	1 471	1 378	41.5	41.8	41.1	20.7	21.5	20.3	5.2	5.0	5.5
CZ	4 125	2 233	1 893	41.4	42.1	40.5	22.7	21.8	23.0	8.6	7.3	10.2
DK	2 550	1 309	1 241	39.4	40.3	38.2	20.0	15.4	21.8	8.7	7.6	10.0
DE	33 649	17 788	15 860	40.3	40.7	39.6	18.0	16.6	18.3	14.6	14.7	14.5
EE	597	289	308	40.9	41.6	40.3	20.9	20.9	21.0	2.1	2.7	1.6
IE	1 749	906	843	38.9	40.2	37.0	18.9	19.7	18.7	7.3	6.0	8.6
EL	2 899	1 692	1 207	40.6	41.5	39.3	20.3	21.4	19.9	10.9	9.3	13.1
ES	16 760	9 522	7 238	40.8	41.5	39.6	19.4	19.3	19.4	31.7	30.6	33.1
FR	22 862	11 715	11 147	39.2	40.0	38.1	23.5	22.5	23.7	14.4	13.3	15.4
IT	17 167	9 834	7 333	39.2	40.5	36.9	22.0	22.4	21.9	13.2	11.2	15.9
CY	301	155	146	40.1	40.4	39.6	21.1	20.4	21.3	13.2	7.6	19.2
LV	998	498	499	41.7	42.4	40.9	21.2	21.5	21.0	4.2	5.5	2.9
LT	1 324	651	673	39.8	40.3	39.4	21.9	21.5	22.1	3.5	4.9	2.3
LU	188	104	84	39.9	39.9	39.8	22.2	25.6	21.9	6.8	6.2	7.6
HU	3 440	1 820	1 620	40.7	41.1	40.1	23.9	24.1	23.8	7.3	7.7	6.8
MT	134	87	47	40.4	41.1	38.8	21.4	21.5	21.4	5.2	3.7	8.0
NL	7 349	3 902	3 447	38.9	39.1	38.1	19.5	19.0	19.7	18.1	16.6	19.7
AT	3 450	1 854	1 596	42.4	43.0	41.1	20.8	18.8	21.1	8.9	8.8	9.0
PL	11 665	6 258	5 407	41.3	42.7	39.5	22.7	23.0	22.5	28.2	28.4	27.9
PT	3 902	2 061	1 841	40.2	40.9	39.3	19.8	20.4	19.7	22.4	21.8	23.0
RO	6 197	3 376	2 821	41.3	41.6	41.0	26.7	27.9	26.0	1.6	1.7	1.5
SI	829	442	387	41.4	41.9	40.9	19.1	19.0	19.2	18.5	16.5	20.8
SK	2 044	1 092	952	40.9	41.4	40.2	21.8	22.3	21.6	5.1	4.9	5.3
FI	2 178	1 075	1 103	39.2	40.1	38.2	20.2	19.5	20.5	15.9	12.4	19.4
SE	4 059	2 034	2 025	39.9	39.9	39.8	25.4	21.9	26.4	17.5	15.0	19.9
UK	24 561	12 471	12 090	42.5	44.0	40.1	19.1	18.2	19.4	5.8	5.2	6.4
HR	1 266	694	572	41.4	41.9	40.8	21.3	22.0	21.0	12.6	12.2	13.2
TR	12 333	9 651	2 682	52.6	53.6	48.8	20.5	21.4	19.5	12.6	12.6	12.4
NO	2 239	1 140	1 099	38.6	39.0	38.0	19.4	16.8	20.2	9.6	7.6	11.7
EEA30	183 797	97 797	86 000	40.5	41.3	39.3	20.2	19.2	20.4	14.4	13.8	15.1
CH	3 456	1 853	1 603	41.0	41.2	40.4	20.9	22.8	20.5	12.9	12.7	13.1

Source: Eurostat, EU-LFS

Table 5 – Unemployed aged 15 and more, 2007

Total unemployment (1000)				% of unemployed for 1 year and +			Youth unemployment ratio (%)	
Total	Confidence limit	Men	Women	Total	Men	Women		
16 735	± 130	8 475	8 260	42.8	43.1	42.5	6.8	EU-27
11 168	± 97	5 492	5 676	43.5	43.5	43.6	6.7	EA13
11 194	± 97	5 506	5 688	43.5	43.4	43.5	6.7	EA15
353	± 15	174	179	50.4	49.3	51.4	6.4	BE
240	± 17	121	120	58.8	56.6	61.0	4.4	BG
277	± 12	124	153	52.2	50.6	53.6	3.4	CZ
111	± 4	54	57	16.2	15.4	16.9	5.6	DK
3 602	± 48	1 939	1 663	56.6	56.7	56.5	6.1	DE
32	± 4	19	13	49.5	52.8	44.7	3.8	EE
101	± 5	61	40	30.0	35.5	21.5	5.0	IE
407	± 16	151	256	50.0	41.8	54.8	7.1	EL
1 834	± 31	815	1 019	20.4	17.3	22.9	8.7	ES
2 211	± 61	1 092	1 119	40.2	40.4	40.0	7.3	FR
1 506	± 32	722	784	47.4	45.5	49.1	6.3	IT
15	± 2	7	8	18.6	23.0	(14.6)	4.2	CY
71	± 6	39	32	26.4	29.8	22.3	4.6	LV
69	± 7	35	34	32.0	33.6	30.5	2.2	LT
9	± 1	4	4	28.7	(35.4)	(22.3)	4.0	LU
312	± 13	164	148	46.8	46.5	47.2	4.6	HU
11	± 1	7	4	41.0	47.6	:	7.1	MT
278	± 10	133	145	39.4	41.8	37.1	4.3	NL
186	± 9	90	96	26.8	26.6	27.1	5.3	AT
1 619	± 51	830	788	51.3	50.8	51.8	7.1	PL
449	± 23	197	252	47.1	47.6	46.7	6.9	PT
641	± 34	399	242	50.0	49.9	50.2	6.1	RO
50	± 3	22	28	45.7	45.3	46.1	4.2	SI
296	± 14	145	150	74.2	75.2	73.3	7.0	SK
183	± 5	90	93	22.9	26.4	19.5	8.8	FI
298	± 7	149	149	13.8	15.7	12.0	10.1	SE
1 576	± 50	890	686	23.9	28.7	17.6	8.8	UK
171	± 20	81	89	61.5	57.3	65.3	8.4	HR
1 969	± 58	1 456	512	26.2	23.3	34.7	6.1	TR
62	± 13	34	29	18.5	20.3	:	4.4	NO
16 797	± 131	8 508	8 289	42.7	43.0	42.4	6.8	EEA30
156	± 10	68	88	39.3	35.2	42.4	4.8	CH

Source: Eurostat, EU-LFS

Notes:

- The number of unemployed calculated here is directly derived from the Labour Force Survey data. The harmonised unemployment series published on a monthly basis by Eurostat can differ from these results.
- Long-term unemployed persons are persons who have been unemployed for one year or more, i.e. unemployed persons who have searched for employment for one year or longer of left last job one year or more ago, whichever period is shorter.
- The % of unemployed for 1 year or + represents long-term unemployed persons as a percentage of the unemployed persons.
- Youth unemployment ratio represents unemployed aged 15-24 years as a percentage of the total population of this age group.

Methodology

Source: the European Union Labour Force Survey (EU-LFS) is a quarterly, large sample survey providing results for the population in private households in the EU, EFTA, and the Candidate Countries. Data for the Former Yugoslav Republic of Macedonia are not yet available in the same format. Conscripts in military or community service are not included in the results.

The sampling rates vary between 0.14% and 1.98%. The concepts and definitions used in the survey follow the guidelines of International Labour Organisation.

Definitions of indicators presented in this publication are on the Eurostat website:

http://europa.eu.int/estatref/info/sdds/en/lfsi/lfs_series_sm.htm

Reference period: In Ireland, the reference period is December 2006 to November 2007.

Coverage: The data for France cover the metropolitan territory (excluding overseas regions)

Aggregates: When data are unavailable for a country, the calculation of the corresponding aggregates takes into account the data for the same country one year before.

Confidence limits: All confidence limits are calculated at a level of confidence of 95%. The country limits are derived from coefficients of variation calculated by the National Statistic Institutes. When a coefficient is not available, the coefficient for the last year available is taken. For the calculation of limits of aggregates, we assume that the EU-LFS is a stratified sample with the country as the first stratum.

Symbols: figures shown in brackets lack reliability due to small sample size; “:” colons are used for unavailable or extremely unreliable data.

Further information

European Statistical Data Support:

Contact details for this support network can be found on our Internet site:

<http://ec.europa.eu/eurostat/>

Data: [Eurostat website/Population and social conditions/Labour market](#)

Population and social conditions

 **Labour market**

 **Employment and unemployment (Labour Force Survey)**