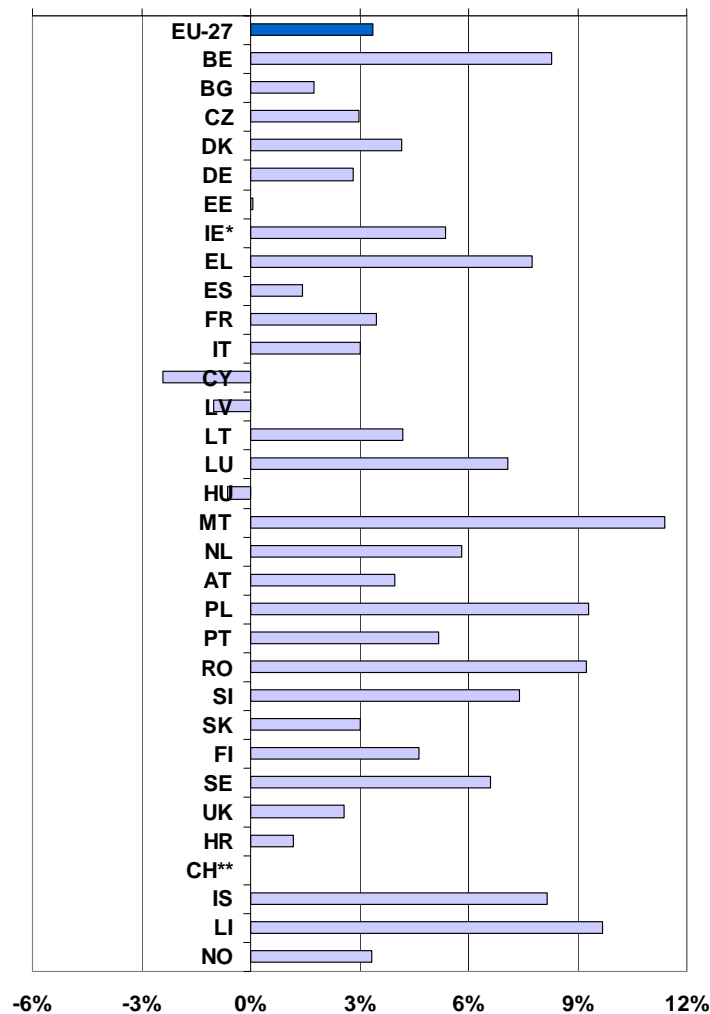


Summer tourism trends in 2007

Nearly 24 million more (+3.4%) nights were spent in hotels and similar establishments in EU-27 during the summer season of 2007 compared with the same period in 2006.

Figure 1: Percentage change in number of nights spent in hotels and similar establishments, non-residents and residents, June-September 2007 compared with the same period in 2006



Source: Eurostat, Tourism Statistics

(*) IE: Data comes from the demand side survey and might for this reason be not comparable.

(**) CH: 2006 data not available.

60% of the nights in hotels and similar establishments of EU-27 were spent in 4 countries: Italy, Spain, Germany and France. Non-residents' most popular EU-27 tourism destinations in terms of number of nights spent, were Spain, Italy, France and Greece.

Table 1: Nights spent in hotels and similar establishments, non-residents and residents, June-September 2007 compared with the same period in 2006

	June - September 2006				June - September 2007				2007/2006 change (in %)		
	Total	of which:		Non-residents as % of Total	Total	of which:		Non-residents as % of Total	Total	of which:	
		Non-residents	Residents			Non-residents	Residents			Non-residents	Residents
('000)											
EU-27	709 996	340 967	369 029	48.0%	733 817	350 594	383 223	47.8%	3.4%	2.8%	3.8%
BE	5 949	3 943	2 006	66.3%	6 441	4 257	2 184	66.1%	8.3%	8.0%	8.9%
BG	11 587	9 536	2 050	82.3%	11 788	9 504	2 284	80.6%	1.7%	-0.3%	11.4%
CZ	10 525	6 842	3 683	65.0%	10 840	6 920	3 920	63.8%	3.0%	1.1%	6.4%
DK	4 817	2 438	2 378	50.6%	5 016	2 330	2 686	46.5%	4.1%	-4.4%	12.9%
DE	85 666	18 135	67 532	21.2%	88 074	18 168	69 906	20.6%	2.8%	0.2%	3.5%
EE	1 658	1 284	375	77.4%	1 660	1 217	443	73.3%	0.1%	-5.2%	18.1%
IE*	12 701	9 122	3 579	71.8%	13 381	9 572	3 809	71.5%	5.4%	4.9%	6.4%
EL	38 674	31 384	7 289	81.2%	41 665	33 430	8 235	80.2%	7.7%	6.5%	13.0%
ES	129 611	76 657	52 954	59.1%	131 474	77 674	53 800	59.1%	1.4%	1.3%	1.6%
FR	82 922	32 128	50 794	38.7%	85 802	33 644	52 158	39.2%	3.5%	4.7%	2.7%
IT	132 034	52 517	79 517	39.8%	136 014	55 070	80 944	40.5%	3.0%	4.9%	1.8%
CY	7 884	7 169	715	90.9%	7 695	7 017	678	91.2%	-2.4%	-2.1%	-5.2%
LV	1 203	850	353	70.7%	1 191	818	373	68.7%	-1.0%	-3.8%	5.7%
LT	1 111	749	362	67.4%	1 158	741	417	64.0%	4.2%	-1.1%	15.2%
LU	536	508	28	94.8%	574	547	28	95.2%	7.1%	7.5%	-1.2%
HU	7 330	3 930	3 400	53.6%	7 282	3 880	3 402	53.3%	-0.6%	-1.3%	0.1%
MT	3 422	3 305	117	96.6%	3 812	3 691	121	96.8%	11.4%	11.7%	3.6%
NL	12 614	6 320	6 294	50.1%	13 346	6 305	7 041	47.2%	5.8%	-0.2%	11.9%
AT	29 531	21 405	8 126	72.5%	30 708	22 051	8 657	71.8%	4.0%	3.0%	6.5%
PL	8 940	3 566	5 374	39.9%	9 770	3 696	6 074	37.8%	9.3%	3.6%	13.0%
PT	17 451	11 874	5 578	68.0%	18 357	12 496	5 861	68.1%	5.2%	5.2%	5.1%
RO	9 211	1 525	7 687	16.6%	10 064	1 629	8 435	16.2%	9.3%	6.8%	9.7%
SI	2 254	1 575	679	69.9%	2 420	1 715	705	70.9%	7.4%	8.9%	3.9%
SK	2 834	1 638	1 196	57.8%	2 920	1 660	1 260	56.8%	3.0%	1.3%	5.3%
FI	6 154	1 833	4 321	29.8%	6 440	1 888	4 552	29.3%	4.6%	3.0%	5.3%
SE	10 016	2 793	7 223	27.9%	10 677	2 944	7 733	27.6%	6.6%	5.4%	7.1%
UK	73 360	27 940	45 420	38.1%	75 250	27 730	47 520	36.9%	2.6%	-0.8%	4.6%
HR	14 996	13 666	1 330	91.1%	15 172	13 762	1 411	90.7%	1.2%	0.7%	6.1%
CH	:	:	:	:	14 970	8 805	6 165	58.8%	:	:	:
IS	1 057	873	184	82.6%	1 143	940	204	82.2%	8.2%	7.7%	10.5%
LI	45	43	1	96.8%	49	48	1	97.6%	9.7%	10.5%	u
NO	8 008	2 823	5 185	35.2%	8 275	2 894	5 380	35.0%	3.3%	2.6%	3.8%

(*IE: Data comes from the demand side survey and might for this reason be not comparable.

Source: Eurostat, Tourism Statistics

With 95.6%, 89.8% and 82.0% respectively, Cyprus, Malta and Greece, were the three Member States with the highest net occupancy rates during their peak summer month.

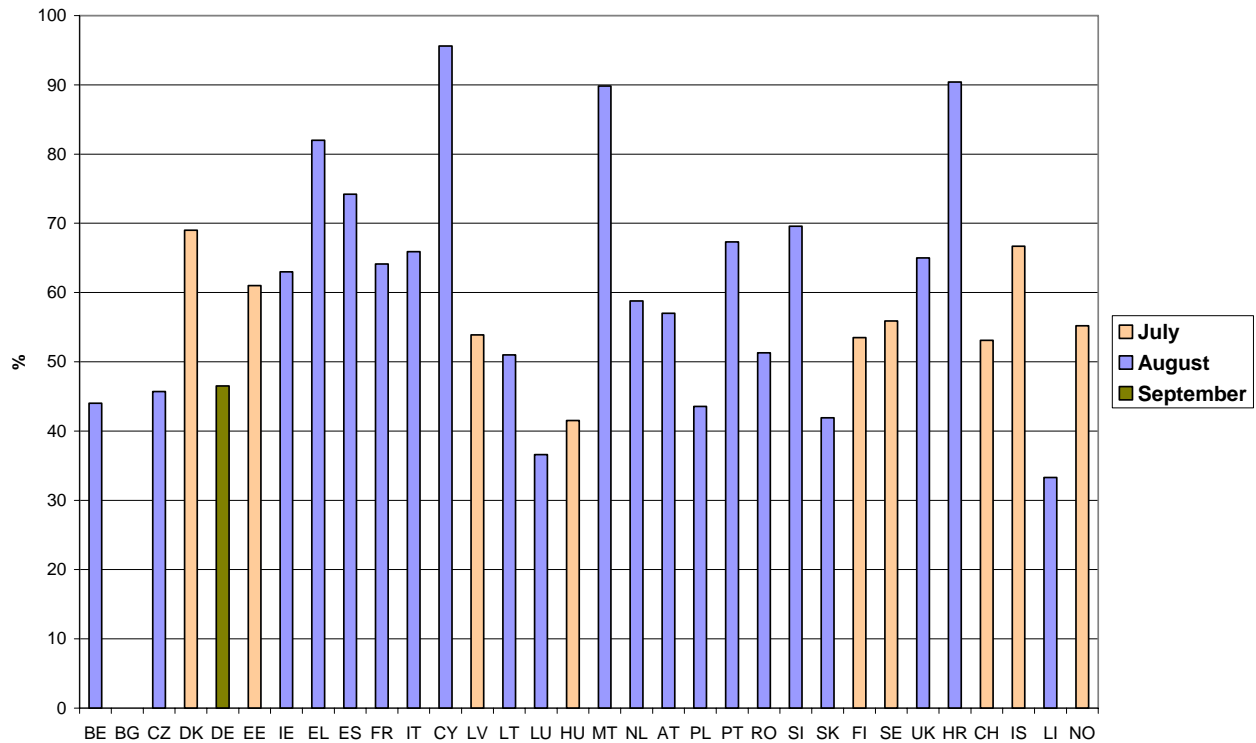
Table 2: Net occupancy rates of bed-places in hotels and similar establishments

%	Summer season 2006				Summer season 2007				Change in percentage points			
	JUN	JUL	AUG	SEP	JUN	JUL	AUG	SEP	JUN	JUL	AUG	SEP
BE	38.4	39.4	40.6	39.7	38.8	41.1	44.0	43.6	0.4	1.7	3.4	3.9
BG*	30.6	47.4	47.4	47.4	29.0	47.3	47.3	47.3	-1.6	-0.1	-0.1	-0.1
CZ	38.1	40.8	44.9	40.0	37.4	41.6	45.7	40.2	-0.7	0.8	0.8	0.2
DK	51.0	65.0	60.0	50.0	53.0	69.0	61.0	50.0	2.0	4.0	1.0	0.0
DE	40.8	41.1	43.5	47.1	41.7	42.4	45.1	46.5	0.9	1.3	1.6	-0.6
EE	54.0	65.0	59.0	47.0	49.0	61.0	54.0	41.0	-5.0	-4.0	-5.0	-6.0
IE	52.0	57.0	62.0	53.0	54.0	58.0	63.0	54.0	2.0	1.0	1.0	1.0
EL	68.2	83.0	89.9	73.4	65.6	77.1	82.0	67.9	-2.6	-5.9	-7.9	-5.5
ES	61.0	67.9	74.5	64.7	61.3	68.1	74.2	64.3	0.3	0.2	-0.3	-0.4
FR	53.9	57.4	61.7	53.8	54.8	59.1	64.1	55.3	0.9	1.7	2.4	1.5
IT	47.5	56.9	63.8	46.4	48.7	59.5	65.9	46.7	1.2	2.6	2.1	0.3
CY	71.2	78.8	89.4	72.6	72.1	83.7	95.6	78.7	0.9	4.9	6.2	6.1
LV	41.2	51.5	60.0	36.6	45.6	53.9	48.5	39.7	4.4	2.4	-11.5	3.1
LT	43.7	47.1	47.0	38.6	45.1	50.0	51.0	41.7	1.4	2.9	4.0	3.1
LU	32.7	32.7	33.8	33.9	33.5	35.9	36.6	36.0	0.8	3.2	2.8	2.1
HU	34.4	41.6	45.4	37.0	34.5	41.5	38.1	37.3	0.1	-0.1	-7.3	0.3
MT	61.2	77.8	83.8	63.9	66.5	87.7	89.8	74.5	5.3	9.9	6.0	10.6
NL	52.5	53.3	57.6	54.6	52.7	54.7	58.8	53.9	0.2	1.4	1.2	-0.7
AT	38.2	48.1	55.4	42.4	39.3	50.9	57.0	42.3	1.1	2.8	1.6	-0.1
PL	41.1	41.3	42.8	42.9	42.7	42.7	43.5	43.3	1.6	1.4	0.7	0.4
PT	47.3	54.5	67.4	53.2	48.4	55.5	67.3	53.2	1.1	1.0	-0.1	0.0
RO	32.7	44.6	49.9	35.8	39.2	46.9	51.3	39.1	6.5	2.3	1.4	3.3
SI	55.9	59.2	67.9	57.1	54.6	61.2	69.6	56.8	-1.3	2.0	1.7	-0.3
SK	38.9	42.7	46.2	39.9	37.5	40.0	41.9	36.3	-1.4	-2.7	-4.3	-3.6
FI	40.4	51.6	43.2	39.7	43.3	53.5	45.1	39.2	2.9	1.9	1.9	-0.5
SE	36.8	53.4	45.5	38.6	39.2	55.9	46.8	39.8	2.4	2.5	1.3	1.2
UK	53.0	58.0	61.0	57.0	57.0	59.0	65.0	56.0	4.0	1.0	4.0	-1.0
HR	67.2	86.3	88.9	64.2	66.1	86.9	90.4	65.0	-1.1	0.6	1.5	0.8
CH	:	:	:	:	45.4	53.1	52.9	46.4	:	:	:	:
IS	47.1	67.3	60.1	39.7	50.2	66.7	59.8	35.6	3.1	-0.6	-0.3	-4.1
NO	45.3	56.1	50.1	38.9	47.1	55.2	50.7	39.0	1.8	-0.9	0.6	0.1
LI	25.3	30.4	28.0	26.4	27.5	33.1	33.3	27.8	2.2	2.7	5.3	1.4

(*) BG: Figures based on quarterly data.

Source: Eurostat, Tourism Statistics

Figure 2: Net occupancy rates of bed-places in hotels and similar establishments in the peak month, summer season 2007



BG: Information on peak month not available, because figures based on quarterly data.

Source: Eurostat, Tourism Statistics

Methodology

CONCEPTS AND DEFINITIONS

Net occupancy rate

The net occupancy rate of bed-places in one month is obtained by dividing total overnight stays by the product of the bed-places on offer and the number of days when the bed-places are actually available for use (net of seasonal closures and other temporary closures for decoration, by police order, etc.) for the same group of establishments, multiplying the quotient by 100 to express the result as a percentage.

Hotels and similar establishments

Hotels, apartment hotels, motels, roadside inns, beach hotels and other similar establishments which provide hotel services including more than bed-making and cleaning of the room and sanitary facilities. Similar establishments are other similar types of accommodation which is let per room and has a limited number of hotel-type services, including bed-making and cleaning of rooms and sanitary facilities, on a daily basis.

Country codes

EU-27: European Union	IE: Ireland	LT: Lithuania	PT: Portugal	HR: Croatia
BG: Bulgaria	EL: Greece	LU: Luxembourg	RO: Romania	CH: Switzerland
BE: Belgium	ES: Spain	HU: Hungary	SI: Slovenia	IS: Iceland
CZ: Czech Republic	FR: France	MT: Malta	SK: Slovakia	LI: Liechtenstein
DK: Denmark	IT: Italy	NL: Netherlands	FI: Finland	NO: Norway
DE: Germany	CY: Cyprus	AT: Austria	SE: Sweden	
EE: Estonia	LV: Latvia	PL: Poland	UK: United Kingdom	

Symbols

"." data not available
 "u" unreliable data

Further information





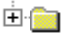
European Statistical Data Support:

Contact details for this support network can be found on our Internet site:

<http://ec.europa.eu/eurostat/>

Tourism statistics data:

Industry, trade and services

-  **Tourism** (tour)
 -  Capacity of collective tourist accommodation : establishments, bedrooms and bedplaces (tour_cap)
 -  Occupancy in collective accommodation establishments : domestic and inbound tourism (tour_occ)
 -  Tourism demand : domestic and outbound tourism (excluding day-trips) (tour_dem)
 -  Employment in the tourism sector (Source: Labour Force Survey 'LFS') (tour_lfs)

Eurostat tourism Website: <http://ec.europa.eu/eurostat/tourism>

Manuscript completed on: 04.06.2008
Data extracted on: 21.05.2008
ISSN 1977-0340
Catalogue number: KS-QA-08-018-EN-N
© European Communities, 2008