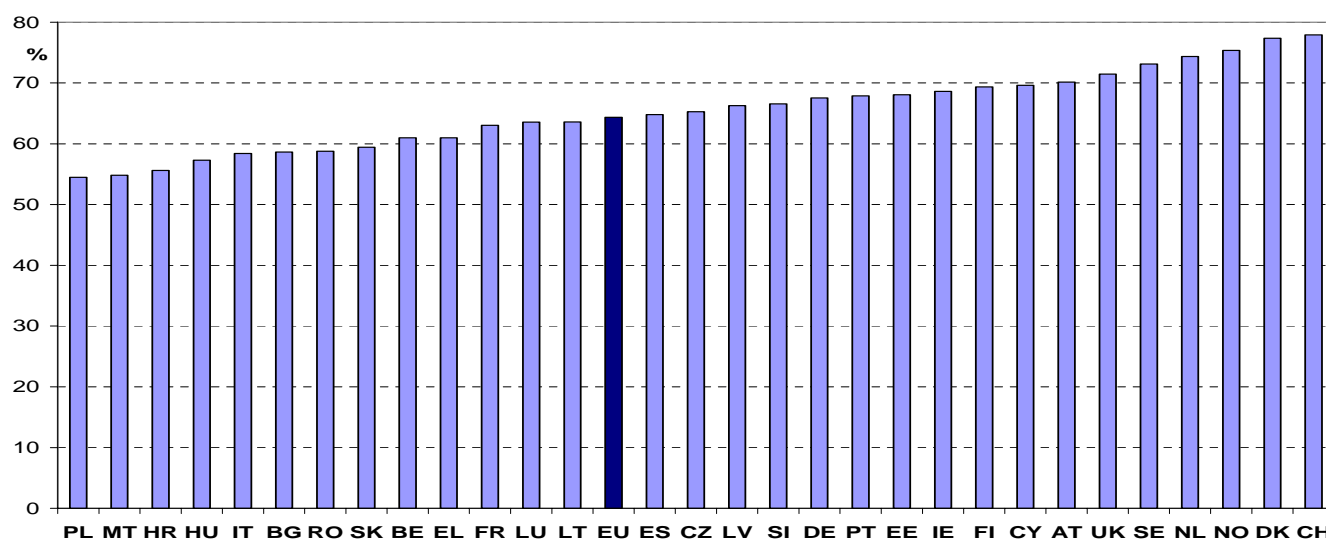
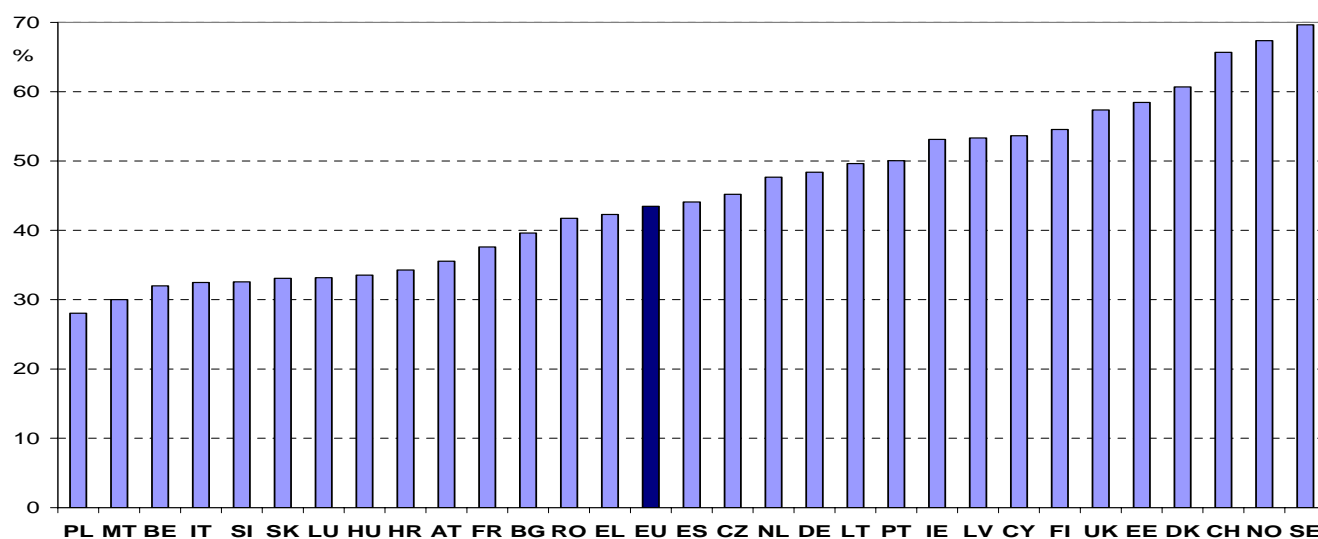


Chart 1: Total employment rate<sup>1</sup> (persons aged 15 to 64 years) in 2006



Source: Eurostat, EU-LFS

Chart 2: Employment rate<sup>1</sup> of older workers (persons aged 55 to 64 years) in 2006



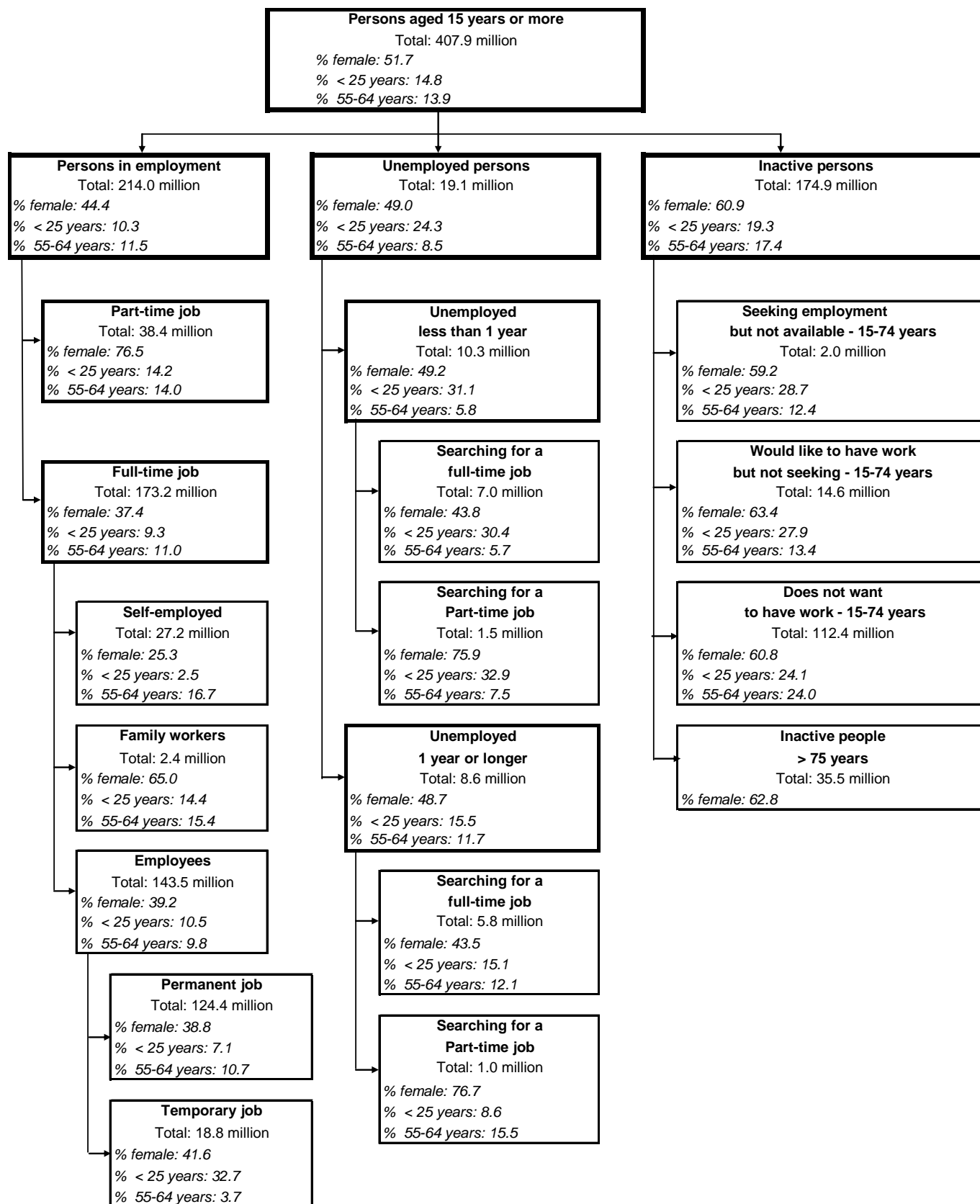
Source: Eurostat, EU-LFS

(1) Employment rates represent employed persons as a percentage of the same age population.

Notes: - In chart 1 and chart 2, EU refers to EU27

- French and German data for 2006 are provisional. This may lead to revisions of the data later this year.

**Chart 3 - Work status of persons aged 15 years or more, EU-27, 2006 (1)**



Source: Eurostat, EU-LFS

Notes: (1) Due to non-response or answers "Don't know", certain sub-totals may not exactly sum up to the corresponding aggregate (for instance, for the breakdown of unemployed persons between the categories 'search for a full time job' and 'search for a part time job' or for the distribution of inactive persons aged 15-74).

**Table 1 - Population employed 15 and more and employment rates, 2006**

	Total employment (1000)				Total employment rates						Part-time employment as a share of total employment			
	Total	Confidence limit	Men	Women	Age 15-64			Age 55-64			Age 15-64			
					Total	Confidence limit	Men	Women	Total	Men	Women	Total	Men	Women
<b>EU25</b>	<b>201 556</b>	<b>± 306</b>	<b>112 181</b>	<b>89 375</b>	<b>64.7</b>	<b>± 0.1</b>	<b>72.0</b>	<b>57.4</b>	<b>43.6</b>	<b>52.8</b>	<b>34.9</b>	<b>18.8</b>	<b>7.7</b>	<b>32.7</b>
<b>EA12</b>	<b>135 627</b>	<b>± 255</b>	<b>76 484</b>	<b>59 143</b>	<b>64.6</b>	<b>± 0.1</b>	<b>72.6</b>	<b>56.6</b>	<b>41.7</b>	<b>50.8</b>	<b>33.0</b>	<b>19.6</b>	<b>7.4</b>	<b>35.3</b>
<b>EU27</b>	<b>213 957</b>	<b>± 334</b>	<b>118 886</b>	<b>95 072</b>	<b>64.4</b>	<b>± 0.1</b>	<b>71.6</b>	<b>57.2</b>	<b>43.5</b>	<b>52.6</b>	<b>34.8</b>	<b>18.1</b>	<b>7.7</b>	<b>31.2</b>
<b>EA13</b>	<b>136 588</b>	<b>± 255</b>	<b>77 007</b>	<b>59 581</b>	<b>64.6</b>	<b>± 0.1</b>	<b>72.6</b>	<b>56.7</b>	<b>41.7</b>	<b>50.8</b>	<b>32.9</b>	<b>19.5</b>	<b>7.4</b>	<b>35.1</b>
BE	4 264	± 29	2 392	1 872	61.0	± 0.4	67.9	54.0	32.0	40.9	23.2	22.2	7.4	41.1
BG	3 110	± 60	1 653	1 457	58.6	± 1.1	62.8	54.6	39.6	49.5	31.1	2.0	1.5	2.5
CZ	4 828	± 32	2 742	2 086	65.3	± 0.4	73.7	56.8	45.2	59.5	32.1	5.0	2.2	8.7
DK	2 805	± 16	1 496	1 309	77.4	± 0.5	81.2	73.4	60.7	67.1	54.3	23.6	13.3	35.4
DE	37 379	± 107	20 346	17 033	67.5	± 0.2	72.8	62.2	48.4	56.4	40.6	25.8	9.3	45.6
EE	646	± 13	323	323	68.1	± 1.4	71.0	65.3	58.5	57.5	59.2	7.8	4.3	11.3
IE	2 039	± 17	1 172	866	68.6	± 0.6	77.7	59.3	53.1	67.0	39.1	:	:	:
EL	4 452	± 74	2 727	1 725	61.0	± 1.0	74.6	47.4	42.3	59.2	26.6	5.7	2.9	10.2
ES	19 748	± 70	11 743	8 005	64.8	± 0.2	76.1	53.2	44.1	60.4	28.7	12.0	4.3	23.2
FR	24 770	± 171	13 298	11 472	63.0	± 0.4	68.5	57.7	37.6	40.1	35.2	17.2	5.7	30.6
IT	22 988	± 81	13 939	9 049	58.4	± 0.2	70.5	46.3	32.5	43.7	21.9	13.3	4.7	26.5
CY	357	± 8	200	157	69.6	± 1.6	79.4	60.3	53.6	71.6	36.6	7.7	4.3	12.1
LV	1 087	± 16	557	530	66.3	± 1.0	70.4	62.4	53.3	59.5	48.7	6.5	4.7	8.3
LT	1 499	± 35	756	743	63.6	± 1.5	66.3	61.0	49.6	55.7	45.1	9.9	7.9	12.0
LU	195	± 2	111	84	63.6	± 0.6	72.6	54.6	33.2	38.7	27.8	17.1	2.6	36.2
HU	3 930	± 60	2 137	1 793	57.3	± 0.9	63.8	51.1	33.6	41.4	27.1	4.0	2.6	5.6
MT	152	± 3	104	48	54.8	± 0.9	74.5	34.9	30.0	50.4	(11.2)	10.1	4.8	21.8
NL	8 261	± 42	4 552	3 709	74.3	± 0.4	80.9	67.7	47.7	58.0	37.2	46.2	23.0	74.7
AT	3 928	± 38	2 147	1 781	70.2	± 0.7	76.9	63.5	35.5	45.3	26.3	21.8	6.5	40.2
PL	14 594	± 98	8 081	6 513	54.5	± 0.4	60.9	48.2	28.1	38.4	19.0	9.8	7.1	13.0
PT	5 159	± 54	2 790	2 370	67.9	± 0.7	73.9	62.0	50.1	58.2	42.8	11.3	7.4	15.8
RO	9 291	± 120	5 052	4 239	58.8	± 0.8	64.6	53.0	41.7	50.0	34.5	9.7	9.5	9.8
SI	961	± 15	524	438	66.6	± 1.0	71.1	61.8	32.6	44.5	21.0	9.2	7.2	11.6
SK	2 302	± 17	1 292	1 010	59.4	± 0.4	67.0	51.9	33.1	49.8	18.9	2.8	1.3	4.7
FI	2 443	± 16	1 266	1 178	69.3	± 0.5	71.4	67.3	54.5	54.8	54.3	14.0	9.3	19.2
SE	4 429	± 16	2 331	2 099	73.1	± 0.3	75.5	70.7	69.6	72.3	66.9	25.1	11.8	40.2
UK	28 337	± 108	15 154	13 183	71.5	± 0.3	77.3	65.8	57.4	66.0	49.1	25.5	10.6	42.6
HR	1 586	± 45	868	718	55.6	± 1.6	62.0	49.4	34.3	44.4	25.7	9.4	7.5	11.7
NO	2 354	± 13	1 243	1 111	75.4	± 0.4	78.4	72.2	67.4	73.0	61.6	28.7	13.9	45.2
<b>EEA30</b>	<b>216 311</b>	<b>± 325</b>	<b>120 129</b>	<b>96 182</b>	<b>64.5</b>	<b>± 0.1</b>	<b>71.6</b>	<b>57.3</b>	<b>43.7</b>	<b>52.8</b>	<b>35.1</b>	<b>18.3</b>	<b>7.7</b>	<b>31.4</b>
CH	4 051	± 29	2 214	1 837	77.9	± 0.5	84.7	71.1	65.7	74.9	56.6	33.3	12.6	58.4

Source: Eurostat, EU-LFS

Note: French and German data for 2006 are provisional. This may lead to revisions of the data later this year.

**Table 2 - Employed persons aged 15 and more by economic activity (main job), 2006**

(% )	Total				Men				Women			
	agriculture	industry	market services	non-market services	agriculture	industry	market services	non-market services	agriculture	industry	market services	non-market services
<b>EU25</b>	4.7	27.4	37.6	30.3	5.5	38.1	37.3	19.1	3.7	14.0	38.0	44.3
<b>EA12</b>	4.2	27.6	38.0	30.2	5.0	38.3	37.3	19.4	3.2	13.8	38.9	44.1
<b>EU27</b>	5.9	27.6	36.9	29.6	6.6	38.0	36.6	18.8	5.0	14.7	37.3	43.1
<b>EA13</b>	4.2	27.7	38.0	30.1	5.0	38.4	37.3	19.3	3.2	13.8	38.9	44.1
BE	2.0	24.7	37.1	36.3	2.5	35.6	38.4	23.5	1.3	10.8	35.3	52.6
BG	8.1	34.5	34.0	23.4	9.8	40.1	33.8	16.3	6.1	28.1	34.2	31.6
CZ	3.8	40.0	32.6	23.6	4.5	49.8	31.0	14.7	2.8	27.0	34.8	35.4
DK	3.1	23.3	37.1	36.5	4.5	33.6	40.0	22.0	1.5	11.6	33.7	53.2
DE	2.3	29.6	37.0	31.1	2.8	40.9	35.5	20.8	1.6	16.1	38.8	43.5
EE	5.0	33.6	35.3	26.2	6.7	45.6	34.0	13.7	3.2	21.6	36.6	38.6
IE	5.7	27.5	39.2	27.6	9.0	39.4	36.3	15.3	1.3	11.3	43.1	44.3
EL	12.0	22.1	39.8	26.1	11.2	29.8	39.2	19.8	13.1	9.9	40.9	36.1
ES	4.8	29.5	39.9	25.8	5.8	41.8	36.3	16.1	3.3	11.6	45.1	40.0
FR	3.9	24.2	36.6	35.2	5.3	35.0	38.0	21.8	2.4	11.8	35.0	50.8
IT	4.3	30.1	39.0	26.6	4.9	38.8	38.4	17.9	3.3	16.7	39.9	40.0
CY	4.3	22.6	42.8	30.3	5.3	32.4	41.3	21.0	2.9	10.2	44.7	42.2
LV	11.2	26.8	36.1	25.9	14.2	37.3	32.1	16.3	8.0	15.8	40.2	36.0
LT	12.4	29.7	32.5	25.4	14.6	39.7	32.0	13.7	10.2	19.5	33.1	37.2
LU	1.8	16.7	42.4	39.1	2.3	25.4	43.4	28.9	(1.2)	5.2	40.9	52.6
HU	4.8	32.4	35.9	26.9	6.5	41.9	34.8	16.7	2.7	21.0	37.2	39.2
MT	(1.7)	28.1	40.9	29.2	(2.4)	34.1	41.0	22.5	:	15.1	40.8	43.8
NL	3.3	20.2	41.9	34.6	4.3	30.0	44.1	21.7	2.1	8.2	39.1	50.6
AT	5.5	28.2	40.2	26.1	5.4	40.4	36.7	17.5	5.6	13.4	44.4	36.5
PL	15.8	30.0	30.4	23.8	16.4	40.1	29.1	14.4	15.0	17.5	32.0	35.5
PT	11.7	30.6	32.1	25.6	11.1	40.5	32.9	15.4	12.4	18.8	31.1	37.7
RO	30.6	30.7	22.1	16.5	29.9	35.2	22.0	12.8	31.4	25.3	22.3	21.0
SI	9.6	35.5	31.1	23.8	9.9	45.4	30.2	14.6	9.2	23.7	32.3	34.9
SK	4.4	38.8	31.8	25.0	5.9	49.8	29.2	15.1	2.4	24.8	35.2	37.7
FI	4.7	25.7	36.8	32.8	6.4	38.5	38.3	16.8	2.8	11.9	35.2	50.1
SE	2.2	21.9	37.5	38.3	3.3	33.3	43.0	20.4	1.0	9.3	31.5	58.2
UK	1.4	22.0	41.7	35.0	1.9	32.9	43.5	21.7	0.7	9.5	39.6	50.3
HR	14.2	29.3	34.6	21.8	13.7	38.9	32.9	14.6	15.0	17.8	36.6	30.7
NO	3.3	20.8	37.6	38.3	4.8	32.4	41.2	21.6	1.5	7.9	33.6	57.0
<b>EEA30</b>	<b>5.9</b>	<b>27.6</b>	<b>36.9</b>	<b>29.7</b>	<b>6.6</b>	<b>37.9</b>	<b>36.7</b>	<b>18.8</b>	<b>4.9</b>	<b>14.6</b>	<b>37.2</b>	<b>43.2</b>
CH	3.8	22.6	40.6	33.0	4.7	32.2	41.6	21.5	2.7	11.2	39.3	46.8

Source: Eurostat, EU-LFS

## Notes:

- French and German data for 2006 are provisional. This may lead to revisions of the data later this year.

- The breakdown of employed persons by economic activity is based on the classification NACE Rev 1.1 (sections A and B for agriculture, C to F for industry, G to K for market services, and L to Q for non market services).

- BG: due to the very high proportion of persons employed in agriculture in addition to another main occupation, the Labour Force Survey does not provide a precise estimate of total employment in this sector.

**Table 3 - Employed persons aged 15 and more by occupation (main job), 2006**

Total				Men				Women				(%)
Skilled non manual	Low skilled non manual	Skilled manual	Elementary occupations	Skilled non manual	Low skilled non manual	Skilled manual	Elementary occupations	Skilled non manual	Low skilled non manual	Skilled manual	Elementary occupations	
<b>38.9</b>	<b>24.9</b>	<b>26.4</b>	<b>9.8</b>	<b>37.5</b>	<b>13.9</b>	<b>40.1</b>	<b>8.5</b>	<b>40.7</b>	<b>38.6</b>	<b>9.4</b>	<b>11.3</b>	<b>EU25</b>
<b>39.0</b>	<b>24.8</b>	<b>26.2</b>	<b>10.1</b>	<b>37.7</b>	<b>14.3</b>	<b>39.8</b>	<b>8.2</b>	<b>40.5</b>	<b>38.2</b>	<b>8.8</b>	<b>12.5</b>	<b>EA12</b>
<b>38.0</b>	<b>24.4</b>	<b>27.7</b>	<b>9.9</b>	<b>36.5</b>	<b>13.7</b>	<b>41.1</b>	<b>8.7</b>	<b>39.9</b>	<b>37.7</b>	<b>11.1</b>	<b>11.3</b>	<b>EU27</b>
<b>38.9</b>	<b>24.7</b>	<b>26.2</b>	<b>10.1</b>	<b>37.7</b>	<b>14.3</b>	<b>39.9</b>	<b>8.2</b>	<b>40.6</b>	<b>38.1</b>	<b>8.9</b>	<b>12.5</b>	<b>EA13</b>
44.8	26.1	19.7	9.4	44.6	16.2	31.1	8.1	45.2	38.5	5.4	11.0	BE
28.2	23.8	35.6	12.4	24.2	15.8	46.6	13.4	32.7	32.7	23.3	11.3	BG
39.4	19.2	35.9	5.6	35.6	10.3	50.0	4.1	44.3	30.8	17.4	7.6	CZ
44.6	25.2	19.6	10.7	43.4	12.4	32.7	11.6	45.9	39.7	4.7	9.7	DK
42.2	25.2	24.3	8.4	40.4	13.4	39.0	7.2	44.2	39.1	6.9	9.8	DE
40.0	17.8	32.1	10.1	34.4	7.6	49.7	8.3	45.6	27.8	14.7	11.9	EE
38.1	30.1	22.7	9.2	37.2	15.7	36.5	10.6	39.3	49.4	4.0	7.3	IE
33.5	25.4	34.4	6.7	32.0	18.1	44.8	5.1	35.8	36.8	18.2	9.2	EL
31.1	25.1	28.7	15.1	29.1	15.5	43.5	11.9	33.9	39.2	7.2	19.8	ES
39.1	24.7	26.2	10.0	39.9	11.8	41.8	6.5	38.2	39.4	8.4	14.0	FR
40.1	22.6	27.9	9.5	37.5	15.6	38.6	8.3	44.1	33.0	11.6	11.2	IT
29.7	30.4	23.2	16.7	30.6	19.4	38.4	11.6	28.4	44.3	4.2	23.2	CY
35.7	18.5	33.7	12.0	29.3	7.4	50.9	12.3	42.5	30.1	15.7	11.7	LV
34.5	16.4	38.4	10.7	25.4	8.0	55.4	11.2	43.7	24.9	21.2	10.2	LT
45.6	26.1	17.9	10.4	44.4	18.9	29.5	7.2	47.3	35.6	2.7	14.5	LU
34.5	24.1	33.4	7.9	28.6	15.2	49.9	6.4	41.5	34.7	14.1	9.8	HU
36.3	28.1	23.5	12.1	34.5	21.8	29.9	13.8	40.1	41.7	9.9	8.3	MT
47.5	26.5	16.6	9.4	47.7	15.2	27.6	9.5	47.2	40.1	3.2	9.4	NL
37.7	25.8	25.9	10.6	38.4	14.1	39.1	8.3	36.9	39.8	10.0	13.4	AT
32.6	18.9	40.8	7.6	26.2	11.7	55.7	6.5	40.6	27.7	22.6	9.1	PL
25.3	24.1	38.7	11.9	25.6	15.4	51.3	7.7	25.0	34.2	24.0	16.8	PT
21.7	14.2	52.8	11.3	18.7	8.8	60.9	11.7	25.3	20.6	43.3	10.8	RO
38.4	20.3	34.3	7.0	34.3	13.9	46.2	5.7	43.2	28.0	20.2	8.6	SI
35.6	20.3	35.2	8.9	29.8	11.2	50.7	8.2	43.0	31.8	15.4	9.8	SK
44.1	22.8	24.9	8.2	43.6	9.0	40.6	6.9	44.7	37.5	8.2	9.5	FI
44.3	27.8	21.8	6.0	43.2	14.5	36.8	5.4	45.6	42.5	5.3	6.6	SE
42.0	30.5	17.0	10.6	44.5	14.2	29.2	12.1	39.1	49.2	2.9	8.8	UK
29.8	26.4	36.2	7.7	29.2	16.4	47.9	6.5	30.4	38.3	22.3	9.0	HR
42.1	31.7	21.1	5.1	41.7	19.1	35.7	3.5	42.5	45.8	4.8	6.9	NO
<b>38.1</b>	<b>24.5</b>	<b>27.6</b>	<b>9.8</b>	<b>36.6</b>	<b>13.7</b>	<b>41.0</b>	<b>8.6</b>	<b>39.9</b>	<b>37.8</b>	<b>11.0</b>	<b>11.2</b>	<b>EEA30</b>
45.5	25.6	23.4	5.4	47.2	14.4	34.7	3.8	43.5	39.1	9.9	7.4	CH

Source: Eurostat, EU-LFS

Notes: - French and German data for 2006 are provisional. This may lead to revisions of the data later this year.

- The breakdown of employed persons by occupation is based on the classification ISCO 88-COM (groups 1 to 3 for skilled non manual, 4 to 5 for low skilled non manual, 6 to 8 for skilled manual and 9 for elementary occupations).

**Table 4 - Employees aged 15 and more, 2006**

	Number of employees (1000)			Usual hours worked per week						% employees with limited duration contract		
	Total	Men	Women	Full time			Part time			Total	Men	Women
				Total	Men	Women	Total	Men	Women			
<b>EU25</b>	<b>168 517</b>	<b>90 027</b>	<b>78 490</b>	<b>40.5</b>	<b>41.3</b>	<b>39.2</b>	<b>20.1</b>	<b>19.3</b>	<b>20.3</b>	<b>14.9</b>	<b>14.4</b>	<b>15.5</b>
<b>EA12</b>	<b>112 930</b>	<b>61 243</b>	<b>51 687</b>	<b>39.9</b>	<b>40.6</b>	<b>38.7</b>	<b>20.0</b>	<b>19.3</b>	<b>20.2</b>	<b>16.6</b>	<b>15.9</b>	<b>17.5</b>
<b>EU27</b>	<b>177 364</b>	<b>94 720</b>	<b>82 644</b>	<b>40.5</b>	<b>41.3</b>	<b>39.3</b>	<b>20.1</b>	<b>19.3</b>	<b>20.3</b>	<b>14.3</b>	<b>13.9</b>	<b>14.9</b>
<b>EA13</b>	<b>113 736</b>	<b>61 669</b>	<b>52 067</b>	<b>40.0</b>	<b>40.7</b>	<b>38.8</b>	<b>20.0</b>	<b>19.3</b>	<b>20.2</b>	<b>16.7</b>	<b>15.9</b>	<b>17.6</b>
BE	3 621	1 970	1 651	39.0	39.7	37.7	23.5	24.3	23.3	8.7	6.9	10.9
BG	2 701	1 391	1 311	41.3	41.6	41.0	20.8	21.7	20.3	6.2	6.3	6.1
CZ	4 048	2 189	1 860	41.3	42.0	40.5	23.5	22.7	23.7	8.7	7.5	10.1
DK	2 551	1 318	1 234	39.4	40.4	38.0	19.0	14.6	20.7	8.9	8.0	10.0
DE	32 863	17 389	15 474	40.3	40.7	39.5	18.1	16.9	18.3	14.5	14.7	14.1
EE	595	287	308	41.0	41.6	40.4	20.8	21.5	20.6	2.7	3.3	2.2
IE	1 704	896	808	:	:	:	:	:	:	3.4	2.9	3.9
EL	2 830	1 657	1 173	40.7	41.6	39.5	20.7	21.8	20.3	10.7	9.1	13.0
ES	16 208	9 314	6 894	40.9	41.7	39.7	19.3	19.1	19.3	34.0	32.0	36.7
FR	21 979	11 392	10 587	39.1	39.8	38.0	23.2	22.7	23.3	13.5	13.0	14.0
IT	16 915	9 717	7 198	39.3	40.6	37.1	22.0	22.1	21.9	13.1	11.2	15.8
CY	281	147	134	39.9	40.3	39.4	21.1	21.1	21.1	13.1	7.9	19.0
LV	961	483	478	42.2	43.3	41.1	21.8	23.1	21.3	7.1	8.8	5.4
LT	1 264	623	641	39.7	40.2	39.3	22.3	21.8	22.5	4.5	6.4	2.7
LU	180	101	79	40.0	40.1	39.8	22.2	24.7	22.0	6.1	5.7	6.6
HU	3 431	1 801	1 630	40.7	41.1	40.2	24.0	24.6	23.8	6.7	7.4	6.0
MT	132	86	45	40.4	41.0	39.0	21.4	20.8	21.7	3.8	(2.7)	(6.0)
NL	7 207	3 866	3 342	38.9	39.1	38.1	19.5	19.3	19.6	16.6	15.4	18.0
AT	3 397	1 818	1 579	42.4	43.1	41.0	20.7	18.7	21.0	9.0	9.1	8.9
PL	11 028	5 933	5 096	41.2	42.8	39.4	22.8	23.2	22.6	27.3	28.5	26.0
PT	3 898	2 073	1 825	40.1	40.9	39.2	20.1	21.5	19.7	20.6	19.5	21.7
RO	6 145	3 302	2 843	41.3	41.6	41.0	25.8	27.4	25.1	1.8	2.0	1.6
SI	806	426	379	41.4	41.9	40.9	19.1	18.5	19.5	17.3	15.5	19.3
SK	2 003	1 074	929	40.9	41.4	40.3	21.6	20.7	22.0	5.1	5.0	5.2
FI	2 129	1 051	1 078	39.2	40.1	38.2	20.5	19.5	20.9	16.4	12.6	20.0
SE	3 955	1 978	1 978	39.9	39.9	39.8	25.4	21.5	26.5	17.3	15.4	19.1
UK	24 533	12 441	12 091	42.4	43.9	40.1	19.0	18.1	19.2	5.8	5.1	6.4
HR	1 222	656	566	41.4	41.9	40.9	23.1	25.2	22.3	12.9	13.1	12.6
NO	2 153	1 097	1 057	38.6	39.0	38.0	19.5	17.0	20.3	10.1	7.8	12.6
<b>EEA30</b>	<b>179 517</b>	<b>95 817</b>	<b>83 700</b>	<b>40.5</b>	<b>41.3</b>	<b>39.3</b>	<b>20.1</b>	<b>19.3</b>	<b>20.3</b>	<b>14.3</b>	<b>13.8</b>	<b>14.8</b>
CH	3 406	1 817	1 589	41.0	41.3	40.4	20.6	22.0	20.2	13.5	13.1	13.9

Source: Eurostat, EU-LFS

Notes: - French and German data for 2006 are provisional. This may lead to revisions of the data later this year.

**Table 5 - Unemployed aged 15 and more, 2006**

Total unemployment (1000)				% of unemployed for 1 year and +			Youth unemploy- ment ratio (%)	
Total	Confidence limit	Men	Women	Total	Men	Women		
<b>18 053</b>	<b>± 147</b>	<b>9 128</b>	<b>8 925</b>	<b>44.9</b>	<b>45.1</b>	<b>44.8</b>	<b>7.8</b>	<b>EU25</b>
<b>12 319</b>	<b>± 121</b>	<b>6 117</b>	<b>6 202</b>	<b>45.4</b>	<b>45.6</b>	<b>45.3</b>	<b>7.4</b>	<b>EA12</b>
<b>19 087</b>	<b>± 153</b>	<b>9 737</b>	<b>9 350</b>	<b>45.6</b>	<b>45.9</b>	<b>45.3</b>	<b>7.7</b>	<b>EU27</b>
<b>12 380</b>	<b>± 121</b>	<b>6 144</b>	<b>6 236</b>	<b>45.4</b>	<b>45.6</b>	<b>45.3</b>	<b>7.4</b>	<b>EA13</b>
383	± 15	191	192	51.2	49.8	52.6	7.1	BE
306	± 17	156	149	55.7	55.0	56.4	5.6	BG
372	± 14	169	202	54.2	53.1	55.2	5.9	CZ
114	± 6	52	62	20.8	20.8	20.8	5.4	DK
4 248	± 50	2 339	1 909	56.4	56.2	56.6	6.9	DE
41	± 4	21	19	48.2	50.6	45.6	4.3	EE
93	± 5	56	37	32.3	39.4	21.5	4.7	IE
434	± 17	162	272	54.3	46.5	59.0	8.2	EL
1 837	± 34	791	1 046	21.7	18.3	24.3	8.6	ES
2 477	± 93	1 213	1 263	42.3	42.8	41.7	8.6	FR
1 673	± 34	801	873	49.6	47.9	51.2	7.0	IT
17	± 2	8	9	19.3	(17.0)	21.3	4.1	CY
80	± 8	45	35	36.2	40.5	30.6	5.0	LV
89	± 9	47	43	44.3	43.6	45.1	2.6	LT
10	± 1	4	6	29.5	(34.4)	(26.0)	4.5	LU
317	± 14	165	152	45.1	46.1	44.1	5.1	HU
12	± 1	7	5	40.2	47.9	:	8.6	MT
336	± 10	167	169	43.0	45.8	40.3	4.6	NL
196	± 10	97	98	27.4	29.7	25.1	5.4	AT
2 344	± 64	1 202	1 142	56.1	54.7	57.7	10.2	PL
428	± 22	195	233	50.2	51.3	49.3	6.9	PT
728	± 39	452	276	57.8	57.6	58.1	6.6	RO
61	± 4	27	34	49.3	49.7	48.9	5.6	SI
355	± 16	181	175	76.3	76.8	75.9	9.4	SK
204	± 6	101	104	25.2	28.4	22.1	9.7	FI
337	± 9	173	164	15.2	17.0	13.2	11.0	SE
1 596	± 42	915	681	22.4	26.9	16.3	8.7	UK
199	± 13	94	104	60.1	59.0	61.1	10.4	HR
83	± 5	44	38	23.2	26.3	19.8	5.0	NO
<b>19 170</b>	<b>± 155</b>	<b>9 781</b>	<b>9 388</b>	<b>45.5</b>	<b>45.8</b>	<b>45.2</b>	<b>7.6</b>	<b>EEA30</b>
170	± 9	79	92	37.2	34.0	40.1	5.3	CH

Source: Eurostat, EU-LFS

Notes: - French and German data for 2006 are provisional. This may lead to revisions of the data later this year.

- The number of unemployed calculated here is directly derived from the Labour Force Survey data. The harmonised unemployment series published on a monthly basis by Eurostat can differ from these results.

- Long-term unemployed persons are persons who have been unemployed for one year of more, i.e. unemployed persons who have searched for employment for one year or longer of left last job one year or more ago, whichever period is shorter.

- The % of unemployed for 1 year or + represents long-term unemployed persons as a percentage of the unemployed persons.

- Youth unemployment ratio represents unemployed aged 15-24 years as a percentage of the total population of this age group.

## METHODOLOGICAL NOTES

**Source:** the European Union Labour Force Survey (EU-LFS) is a quarterly, large sample survey providing results for the population in private households in the EU, EFTA, and the Candidate Countries. Data for Turkey and the Former Yugoslav Republic Of Macedonia are not yet available in the same format. Conscripts in military or community service are not included in the results.

The sampling rates vary between 0.2% and 3.3%. The concepts and definitions used in the survey follow the guidelines of International Labour Organisation.

Definitions of indicators presented in this publication are on the Eurostat website:

[http://europa.eu.int/estatref/info/sdds/en/lfsi/lfs\\_series\\_sm.htm](http://europa.eu.int/estatref/info/sdds/en/lfsi/lfs_series_sm.htm)

**Provisional data:** French and German data for 2006 are provisional. This may lead to revisions of the data later this year.

**Reference period:** In Ireland, the reference period is December 2005 to November 2006.

**Coverage:** The data for France cover the metropolitan territory (excluding overseas regions)

**Aggregates:** When data are unavailable for a country, the calculation of the corresponding aggregates takes into account the data for the same country one year before.

**Confidence limits:** All confidence limits are calculated at a level of confidence of 95%. The country limits are derived from coefficients of variation calculated by the National Statistic Institutes. When a coefficient is not available, the coefficient for the last year available is taken. For the calculation of limits of aggregates, we assume that the EU-LFS is a stratified sample with the country as the first stratum.

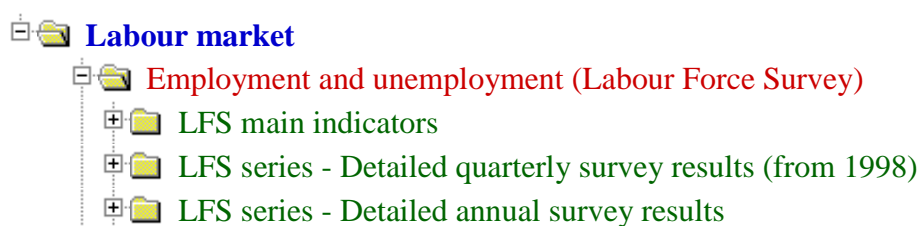
**Symbols:** figures shown in brackets lack reliability due to small sample size; “:” colons are used for unavailable or extremely unreliable data.

## FURTHER INFORMATION

### European Statistical Data Support

Contact details for this support network can be found on the Eurostat Internet site:  
<http://ec.europa.eu/eurostat> → Services: Help/Data support

**Data:** [EUROSTAT Website/Home page/Population and social conditions/Data](#)



## FURTHER INFORMATION

### European Statistical Data Support

Contact details for this support network can be found on the Eurostat Internet site:  
<http://ec.europa.eu/eurostat> → Services: Help/Data support