

# Roundwood production

## 2005

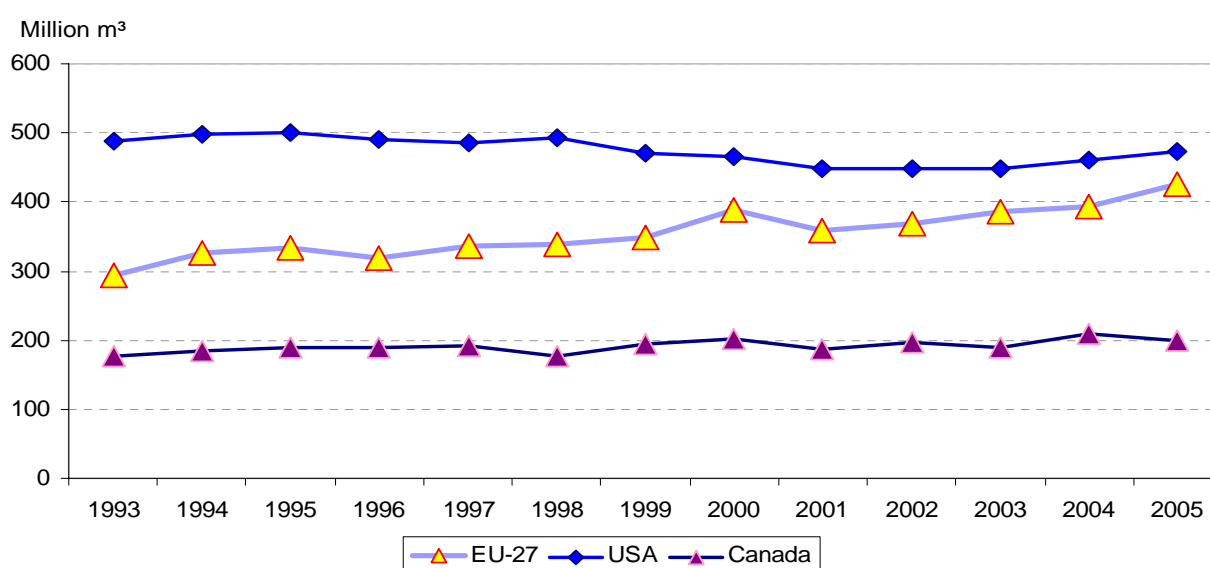
Author: Marilise WOLF-CROWTHER

AGRICULTURE AND FISHERIES

7/2007

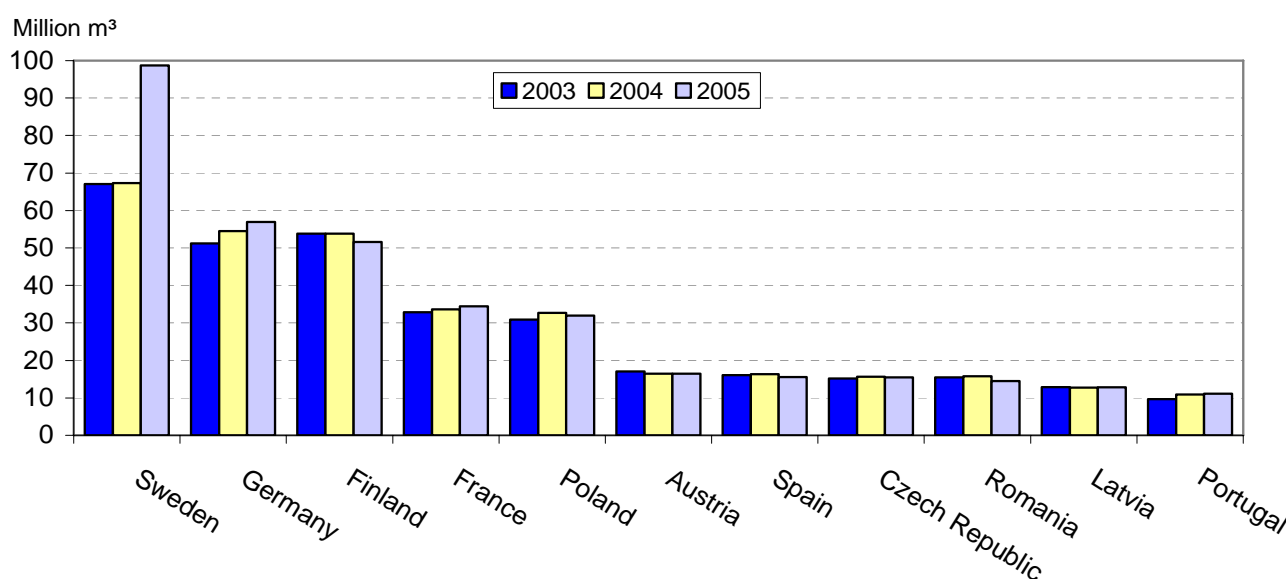
Forestry

**Chart 1: Roundwood production of the EU-27, Canada and USA**



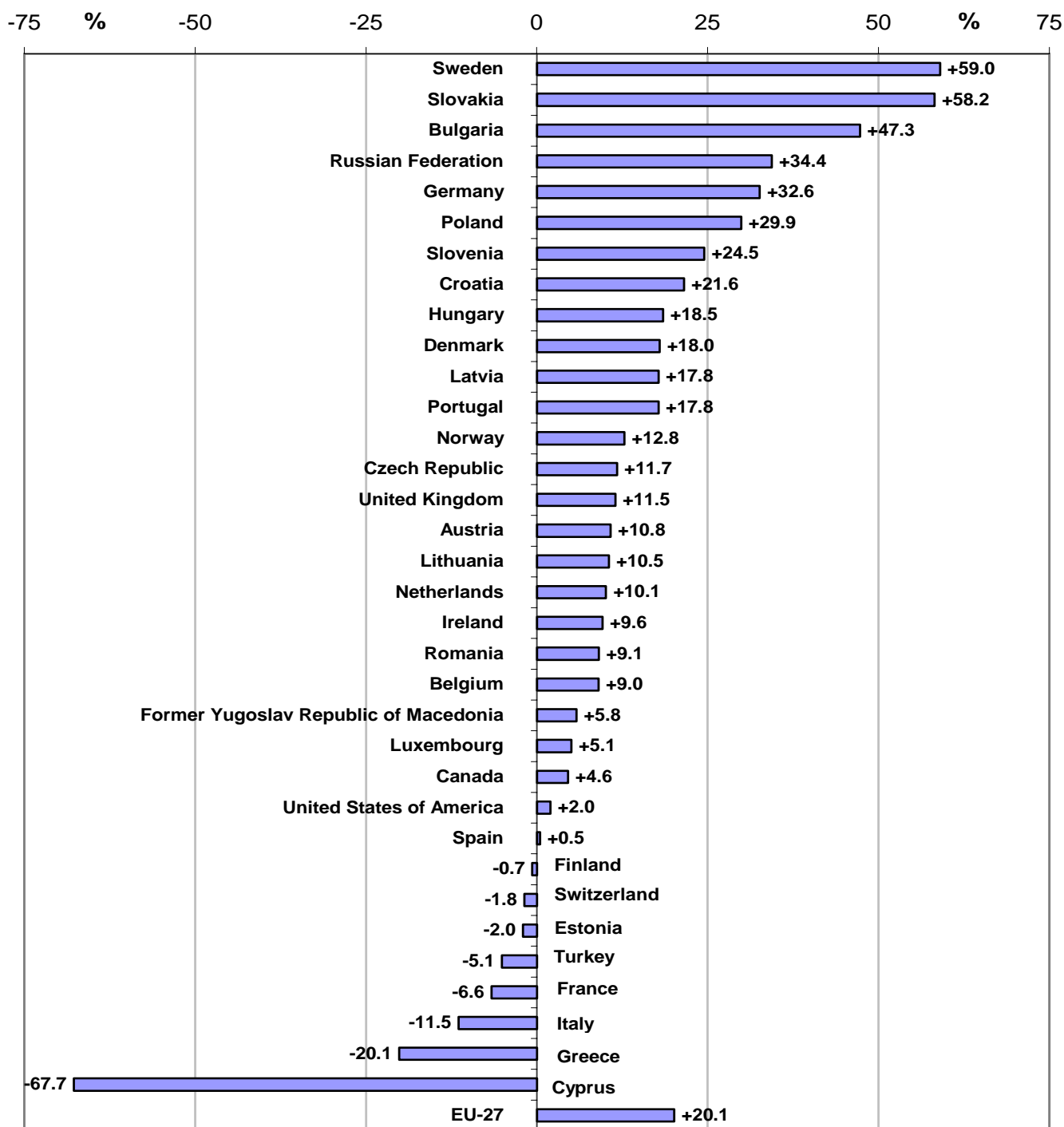
Source: Eurostat

**Chart 2: Main producers of roundwood in the EU-27 in 2003-2005**



Source: Eurostat

**Chart 3: Roundwood production 2005 in the EU-27 and other major wood-producing countries, in percent of long-term average**



Source: Eurostat

Long-term average : Arithmetic mean of the data for 1994-2004 (Belgium and Luxembourg 1999-2004, Former Yugoslav Republic of Macedonia 2000-2004).

Timber felled by windstorms in the winter of 2004/2005 make up a significant share of the production of Sweden, Slovakia, Denmark and Latvia. See also: <http://www.unece.org/trade/timber/storm/storm.htm> and [http://www.unece.org/trade/timber/docs/tc-sessions/tc-63/Presentations\\_MktDiscussions/Presentations\\_PDF/07\\_Karlsson.pdf](http://www.unece.org/trade/timber/docs/tc-sessions/tc-63/Presentations_MktDiscussions/Presentations_PDF/07_Karlsson.pdf)

Because of small production figures for Cyprus, the difference expressed as a percentage is very large.

**Table 1: Removals of roundwood by type of wood**

	<i>1000 m<sup>3</sup> without bark</i>								
	Coniferous			Broadleaved			Roundwood total		
	2003	2004	2005	2003	2004	2005	2003	2004	2005
<b>EU-27</b>	277 313	281 920	317 022	109 434	111 139	108 671	386 747	393 059	425 693
<b>EU-25</b>	269 139	273 976	309 201	97 335	97 289	96 130	366 474	371 264	405 331
<b>BE</b>	3 225	3 785	3 885	1 540	1 065	1 065	4 765	4 850	4 950
<b>BG</b>	1 606	2 097	2 247	3 227	3 889	3 615	4 833	5 986	5 862
<b>CZ</b>	13 660	13 920	13 883	1 480	1 681	1 627	15 140	15 601	15 510
<b>DK</b>	1 216	1 114	1 879	411	402	406	1 627	1 516	2 285
<b>DE</b>	40 327	43 819	45 941	10 855	10 685	11 005	51 182	54 504	56 946
<b>EE</b>	6 900	4 300	4 300	3 600	2 500	2 500	10 500	6 800	6 800
<b>IE</b>	2 643	2 549	2 630	40	13	18	2 683	2 562	2 648
<b>EL</b>	495	440	426	1 178	1 253	1 097	1 673	1 694	1 523
<b>ES</b>	8 975	9 070	8 714	7 130	7 220	6 817	16 105	16 290	15 532
<b>FR</b>	19 908	20 498	20 960	12 920	13 149	13 460	32 828	33 647	34 420
<b>IT</b>	1 457	1 559	1 620	6 762	7 138	6 429	8 219	8 697	8 049
<b>CY</b>	11	9	8	1	1	2	12	10	10
<b>LV</b>	7 009	6 738	8 655	5 907	6 016	4 188	12 916	12 754	12 843
<b>LT</b>	3 570	3 460	3 470	2 705	2 660	2 575	6 275	6 120	6 045
<b>LU</b>	128	96	96	129	181	181	257	277	277
<b>HU</b>	678	861	779	5 107	4 799	5 161	5 785	5 660	5 940
<b>MT</b>	-	-	-	-	-	-	-	-	-
<b>NL</b>	594	600	657	450	426	453	1 044	1 026	1 110
<b>AT</b>	14 734	14 070	14 008	2 321	2 413	2 463	17 055	16 483	16 471
<b>PL</b>	21 887	23 501	23 028	8 949	9 232	8 916	30 836	32 733	31 944
<b>PT</b>	3 532	4 177	4 036	6 141	6 692	7 070	9 673	10 869	11 106
<b>RO</b>	6 568	5 848	5 575	8 872	9 961	8 926	15 440	15 809	14 501
<b>SI</b>	1 549	1 556	1 713	1 042	995	1 020	2 591	2 551	2 733
<b>SK</b>	3 375	4 036	6 225	2 980	3 204	3 077	6 355	7 240	9 302
<b>FI</b>	45 135	45 236	42 921	8 643	8 563	8 679	53 778	53 800	51 599
<b>SE</b>	60 550	60 750	91 300	6 550	6 550	7 400	67 100	67 300	98 700
<b>UK</b>	7 581	7 831	8 068	494	450	521	8 075	8 281	8 589
<b>IS</b>	-	-	:	-	-	:	-	-	:
<b>NO</b>	7 450	7 991	8 890	848	791	777	8 298	8 782	9 667
<b>CH</b>	4 047	4 046	3 933	1 073	1 086	1 110	5 120	5 132	5 043
<b>HR</b>	532	575	623	3 315	3 266	3 395	3 847	3 841	4 018
<b>MK</b>	48	61	81	764	780	741	812	841	822
<b>TR</b>	7 350	8 134	8 119	8 460	8 369	8 066	15 810	16 503	16 185
<b>CA</b>	154 040	168 691	161 510	36 085	39 715	37 835	190 125	208 406	199 345
<b>RU</b>	110 794	119 900	124 500	63 206	58 500	62 000	174 000	178 400	186 500
<b>US</b>	288 664	303 838	312 700	159 849	157 902	159 162	448 513	461 739	471 862

*Source: Eurostat*

**Table 2: Removals of roundwood by category**

	<i>1000 m<sup>3</sup> without bark</i>								
	Fuelwood			Industrial roundwood			Roundwood total		
	2003	2004	2005	2003	2004	2005	2003	2004	2005
<b>EU-27</b>	50 805	51 703	53 742	335 943	341 356	371 951	386 747	393 059	425 693
<b>EU-25</b>	45 715	45 779	48 105	320 760	325 485	357 226	366 474	371 264	405 331
<b>BE</b>	550	600	650	4 215	4 250	4 300	4 765	4 850	4 950
<b>BG</b>	2 187	2 909	2 678	2 646	3 077	3 184	4 833	5 986	5 862
<b>CZ</b>	1 180	1 190	1 225	13 960	14 411	14 285	15 140	15 601	15 510
<b>DK</b>	817	948	1 260	810	568	1 025	1 627	1 516	2 285
<b>DE</b>	5 767	5 847	6 041	45 415	48 657	50 905	51 182	54 504	56 946
<b>EE</b>	2 100	1 300	1 300	8 400	5 500	5 500	10 500	6 800	6 800
<b>IE</b>	30	20	19	2 653	2 542	2 629	2 683	2 562	2 648
<b>EL</b>	1 074	1 225	1 004	599	469	519	1 673	1 694	1 523
<b>ES</b>	2 030	2 055	2 180	14 075	14 235	13 352	16 105	16 290	15 532
<b>FR</b>	2 288	2 358	2 800	30 540	31 289	31 620	32 828	33 647	34 420
<b>IT</b>	5 580	5 814	5 362	2 639	2 883	2 687	8 219	8 697	8 049
<b>CY</b>	4	3	4	8	7	6	12	10	10
<b>LV</b>	991	970	950	11 925	11 784	11 893	12 916	12 754	12 843
<b>LT</b>	1 320	1 260	1 130	4 955	4 860	4 915	6 275	6 120	6 045
<b>LU</b>	18	13	13	239	264	264	257	277	277
<b>HU</b>	2 781	2 672	3 136	3 004	2 988	2 804	5 785	5 660	5 940
<b>MT</b>	-	-	-	-	-	-	-	-	-
<b>NL</b>	290	290	290	754	736	820	1 044	1 026	1 110
<b>AT</b>	3 336	3 540	3 685	13 719	12 943	12 786	17 055	16 483	16 471
<b>PL</b>	3 632	3 396	3 413	27 204	29 337	28 531	30 836	32 733	31 944
<b>PT</b>	600	600	600	9 073	10 269	10 506	9 673	10 869	11 106
<b>RO</b>	2 903	3 015	2 959	12 537	12 794	11 542	15 440	15 809	14 501
<b>SI</b>	359	725	943	2 232	1 826	1 789	2 591	2 551	2 733
<b>SK</b>	304	304	297	6 051	6 936	9 005	6 355	7 240	9 302
<b>FI</b>	4 533	4 519	4 483	49 246	49 281	47 116	53 778	53 800	51 599
<b>SE</b>	5 900	5 900	7 000	61 200	61 400	91 700	67 100	67 300	98 700
<b>UK</b>	231	231	319	7 844	8 050	8 270	8 075	8 281	8 589
<b>IS</b>	-	-	:	-	-	:	-	-	:
<b>NO</b>	1 309	1 429	1 177	6 989	7 353	8 490	8 298	8 782	9 667
<b>CH</b>	1 107	1 148	1 066	4 013	3 984	3 978	5 120	5 132	5 043
<b>HR</b>	979	954	908	2 868	2 887	3 110	3 847	3 841	4 018
<b>MK</b>	688	705	664	124	136	158	812	841	822
<b>TR</b>	5 081	5 278	4 983	10 729	11 225	11 202	15 810	16 503	16 185
<b>CA</b>	2 768	2 789	2 903	187 357	205 617	196 442	190 125	208 406	199 345
<b>RU</b>	47 400	47 800	47 000	126 600	130 600	139 500	174 000	178 400	186 500
<b>US</b>	42 900	43 608	43 891	405 613	418 131	427 971	448 513	461 739	471 862

*Source: Eurostat*

**Table 3: Removals of industrial roundwood by assortment**

*1000 m<sup>3</sup> without bark*

	Sawlogs and veneer logs			Pulpwood			Other industrial roundwood			Industrial Roundwood total		
	2003	2004	2005	2003	2004	2005	2003	2004	2005	2003	2004	2005
<b>EU-27</b>	194 887	195 745	219 229	125 770	130 583	137 970	15 286	15 028	14 752	335 943	341 356	371 951
<b>EU-25</b>	185 354	186 213	210 015	122 313	126 434	134 369	13 093	12 838	12 842	320 760	325 485	357 226
<b>BE</b>	2 690	2 700	2 690	1 325	1 375	1 430	200	175	180	4 215	4 250	4 300
<b>BG</b>	1 581	1 334	1 367	971	1 649	1 723	94	94	94	2 646	3 077	3 184
<b>CZ</b>	8 605	8 428	8 153	4 965	5 593	5 742	390	390	390	13 960	14 411	14 285
<b>DK</b>	470	386	700	169	165	299	172	17	26	810	568	1 025
<b>DE</b>	30 590	32 241	34 432	11 127	12 695	12 964	3 698	3 721	3 509	45 415	48 657	50 905
<b>EE</b>	4 350	3 300	3 300	2 900	1 500	1 500	1 150	700	700	8 400	5 500	5 500
<b>IE</b>	1 893	1 723	1 763	623	722	759	138	98	107	2 653	2 542	2 629
<b>EL</b>	528	381	420	-	-	-	71	88	99	599	469	519
<b>ES</b>	7 700	7 795	7 343	5 470	5 520	5 207	905	920	801	14 075	14 235	13 352
<b>FR</b>	19 827	19 867	20 000	10 240	10 978	11 200	473	444	420	30 540	31 289	31 620
<b>IT</b>	1 632	1 448	1 147	594	533	664	413	902	876	2 639	2 883	2 687
<b>CY</b>	8	7	6	-	-	-	0	0	0	8	7	6
<b>LV</b>	7 842	7 892	7 951	3 525	3 292	3 318	558	600	624	11 925	11 784	11 893
<b>LT</b>	3 370	3 420	3 520	1 570	1 430	1 390	15	10	5	4 955	4 860	4 915
<b>LU</b>	133	136	136	89	122	122	18	6	6	239	264	264
<b>HU</b>	1 571	1 575	1 248	583	653	453	850	760	1 103	3 004	2 988	2 804
<b>MT</b>	-	-	-	-	-	-	-	-	-	-	-	-
<b>NL</b>	438	393	448	190	310	328	126	33	44	754	736	820
<b>AT</b>	10 578	10 021	9 892	3 141	2 922	2 894	-	-	-	13 719	12 943	12 786
<b>PL</b>	11 765	13 076	12 715	13 250	13 960	13 640	2 189	2 301	2 176	27 204	29 337	28 531
<b>PT</b>	2 553	2 246	2 161	6 340	7 843	8 165	180	180	180	9 073	10 269	10 506
<b>RO</b>	7 952	8 198	7 847	2 486	2 500	1 878	2 099	2 096	1 817	12 537	12 794	11 542
<b>SI</b>	1 291	1 372	1 403	572	283	288	369	171	99	2 232	1 826	1 789
<b>SK</b>	2 533	3 119	4 845	3 217	3 397	3 629	301	420	531	6 051	6 936	9 005
<b>FI</b>	24 577	24 257	22 444	24 669	25 024	24 672	-	-	-	49 246	49 281	47 116
<b>SE</b>	35 500	35 400	58 200	25 200	25 500	33 000	500	500	500	61 200	61 400	91 700
<b>UK</b>	4 912	5 030	5 099	2 555	2 617	2 705	377	403	466	7 844	8 050	8 270
<b>IS</b>	-	-	:	:	:	:	:	:	:	-	-	:
<b>NO</b>	3 938	4 057	4 625	3 025	3 266	3 840	26	30	25	6 989	7 353	8 490
<b>CH</b>	3 500	3 424	3 355	513	560	595	-	-	29	4 013	3 984	3 978
<b>HR</b>	2 055	2 074	2 234	594	558	610	219	255	266	2 868	2 887	3 110
<b>MK</b>	118	126	144	-	-	-	6	10	14	124	136	158
<b>TR</b>	5 137	5 235	5 107	3 650	4 278	4 403	1 942	1 712	1 692	10 729	11 225	11 202
<b>CA</b>	158 496	172 749	166 181	25 546	29 286	26 785	3 315	3 582	3 476	187 357	205 617	196 442
<b>RU</b>	54 574	67 900	74 200	50 886	48 000	49 700	21 140	14 700	15 600	126 600	130 600	139 500
<b>US</b>	230 012	247 958	254 113	166 596	161 168	164 853	9 005	9 005	9 005	405 613	418 131	427 971

Source: Eurostat

## METHODOLOGICAL NOTES

This publication refers to roundwood measured in cubic metres solid volume underbark (i.e. excluding bark)

Figures for Malta are missing due to lack of removals.

### Definitions

*Removals of roundwood* (the term is used as a synonym for "roundwood production") comprise all quantities of wood removed from the forest and other wooded land or other felling site during a certain period of time.

*Roundwood* is divided into two principal categories: *industrial roundwood* and *fuelwood*. Industrial roundwood comprises the following assortment: *logs*, *pulpwood* and *other industrial roundwood*. The final use determines the category to which roundwood is attributed. *Logs* are used for the production of sawnwood (including sleepers) and veneer sheets. *Pulpwood* is wood in the rough other than logs, for the manufacture of pulp, particleboard and fibreboard. *Fuelwood* is wood in the rough (from trunks and tree branches) to be used as fuel for purposes such as cooking, heating and power production.

*Coniferous*: Wood derived from trees botanically classified as Gymnospermae.

*Broadleaved*: Wood derived from trees botanically classified as Angiospermae.

*Underbark*: excluding bark. Removals are normally measured overbark, but these data were collected through the Eurostat/UNECE/FAO/ITTO Joint Forest Sector Questionnaire, which also covers trade in wood and that data concerns wood without bark.

### Symbols used

- : data not available
- .
- 0 less than half the final digit shown
- nil or not applicable

### Country codes

EU-27: The 27 Member States of the EU as of 1.1.2007 – EU-25: The 25 Member States of the EU as of 1.5.2004 – BE Belgium – BG Bulgaria – CZ Czech Republic – DK Denmark – DE Germany – EE Estonia – IE Ireland – EL Greece – ES Spain – FR France – IT Italy – CY Cyprus – LV Latvia – LT Lithuania – LU Luxembourg – HU Hungary – MT Malta – NL Netherlands – AT Austria – PL Poland – PT Portugal – RO Romania – SI Slovenia – SK Slovakia – FI Finland – SE Sweden – UK United Kingdom – IS Iceland – NO Norway – CH Switzerland – HR Croatia – MK Former Yugoslav Republic of Macedonia – TR Turkey – CA Canada – RU Russian Federation – US United States of America.

## FURTHER INFORMATION

### European Statistical Data Support

Contact details for this support network can be found on the Eurostat Internet site:  
<http://ec.europa.eu/eurostat> → Services: Help/Data support