

Asia–Europe Meeting's 20th anniversary

ASEM 1996–2016: 20 YEARS OF DIALOGUE
AND COOPERATION



The Asia-Europe Meeting celebrates 20 years of dialogue and cooperation

The first ASEM Summit was held on 1-2 March 1996. It marked the start of a process that engaged both regions in dialogue and cooperation on political, economic and socio-cultural issues. The origins of the ASEM process lay in the recognition that the relationship between the two regions, Asia and Europe, could be strengthened.

For the past 2 decades ASEM has played a pivotal role as a forum for dialogue and cooperation. ASEM celebrates its 20th anniversary on 15-16 July 2016 at the 11th ASEM Summit (ASEM11) in Ulaanbaatar, Mongolia.

Managing growing Europe-Asia relations

ASEM was established as a new process between Asia-Europe, complementing existing Europe-Asia relations. ASEM is not a substitute for other bilateral or multilateral forums between Asia and Europe, and it can help to facilitate and stimulate progress in other forums. As a new layer of dialogue and cooperation, ASEM has enhanced synergies in Europe-Asia relations and served as catalyst for overall Asia-Europe relations.

ASEM has helped Europe and Asia to have a more global vision of the two regions. By remaining an informal dialogue-based process, ASEM aims to promote overall Asia-Europe relations on international and inter-regional issues of common interest. By bringing together different cultures and civilisations, ASEM is a unique process to foster common understanding and dialogue.

From the initial Summit with 26 partners, ASEM now brings together 51 countries and 2 international institutions. This growth has taken place in several stages. Partly, it has followed naturally through the enlargement of the European Union and ASEAN, partly additional countries have seen the value of joining in this fruitful process. The following illustrations present the current ASEM partners and show the development in ASEM membership over these 20 years.

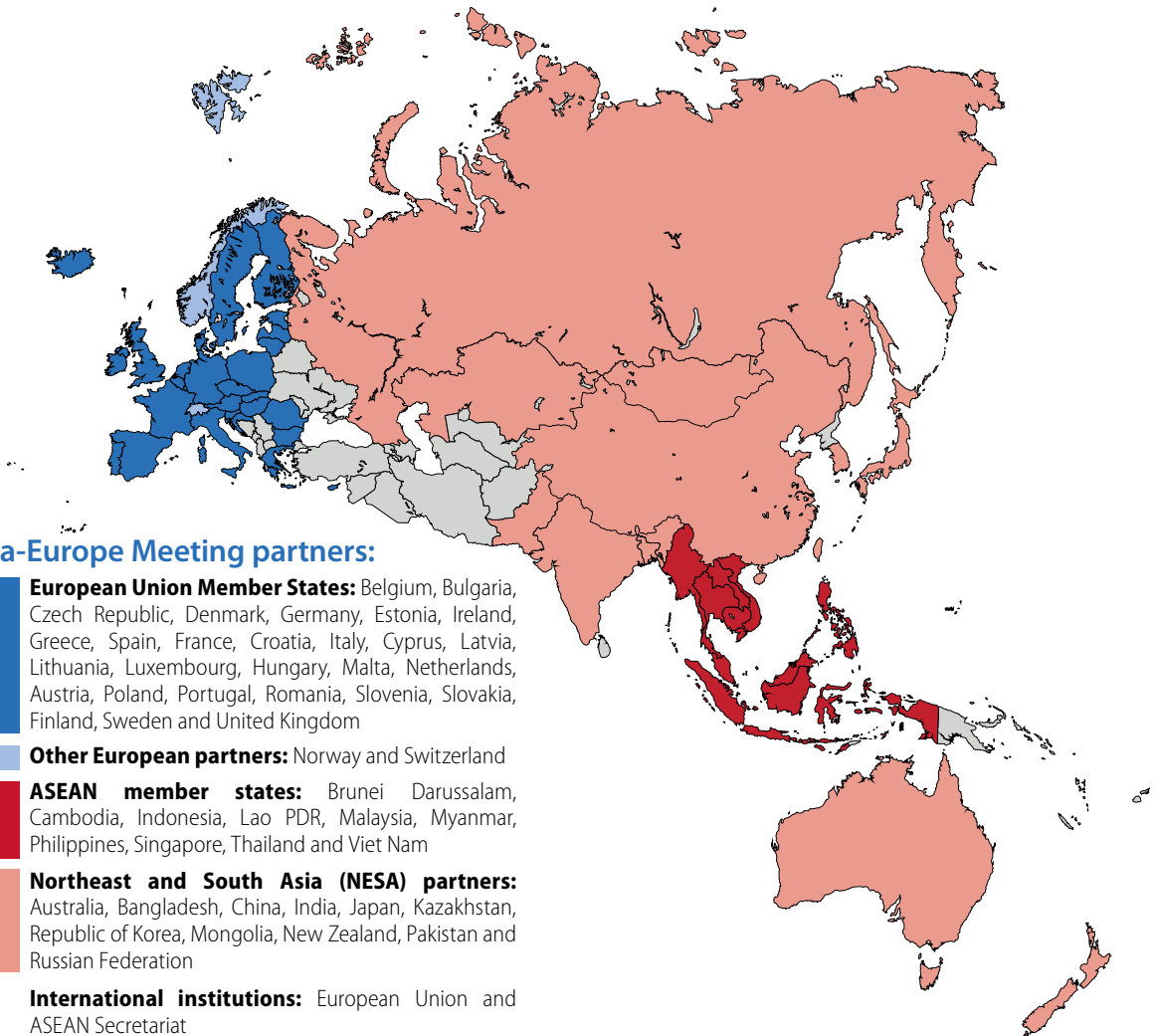
Today, almost two thirds of the world population is living in countries participating in the ASEM process. Over the last 20 years, the population living in ASEM partner countries has grown from just under 2.2 billion in 1996 to 4.5 billion in 2014, (the most recent year for which data are available).

Social and economic progress

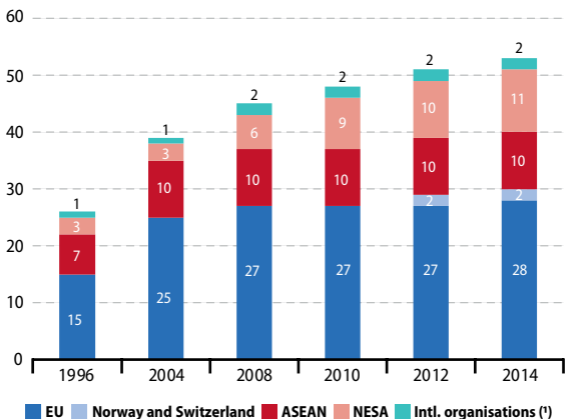
Across the ASEM partners, data show that there has been a trend over the last 20 years for people to move from the countryside into cities, in particular into cities with more than one million inhabitants, most notably among the Asian ASEM partners. This trend reinforces and creates new social challenges that are common to all ASEM partners, calling for exchange of experiences and solutions.

While there are variations in the share of the population at school age or below (0-14 years) across the ASEM partners, it is interesting to note that the share of the population of working age (15-64 years) is relatively similar between the regions.

It is notable how much the GDP in the ASEM partners has grown since 1996, both in total and measured per inhabitant. The data also reflect the rapid emergence of the 'information society', with rapid growth in both mobile phone and internet usage.



Number of ASEM partners at each enlargement

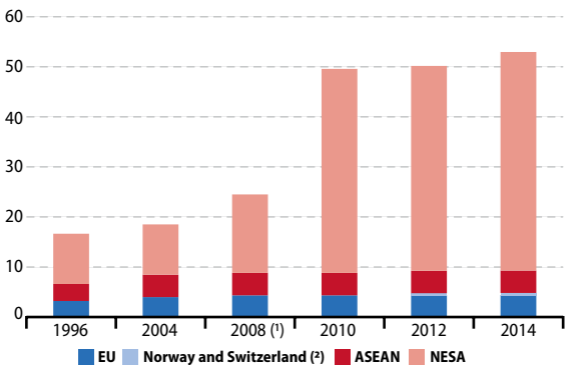


■ EU ■ Norway and Switzerland ■ ASEAN ■ NESA ■ Intl. organisations (¹)

(¹) European Union from 1996 onwards; ASEAN Secretariat from 2008 onwards

Source: ASEM Infoboard

Surface area of ASEM at each enlargement (million square kilometres)

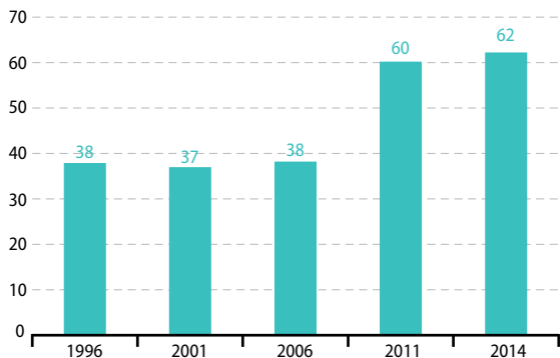


■ EU ■ Norway and Switzerland (²) ■ ASEAN ■ NESA

(¹) 2008: Major enlargement, including India; (²) Norway and Switzerland are ASEM members since 2012

Source: ASEM Infoboard

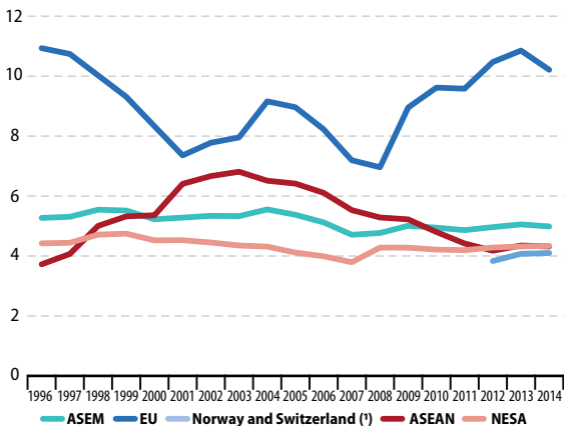
Share of ASEM in the world population (¹) (%)



(¹) Total ASEM population corresponds to the population of the countries who were ASEM partners in the year in question

Source: World Bank World Development indicators

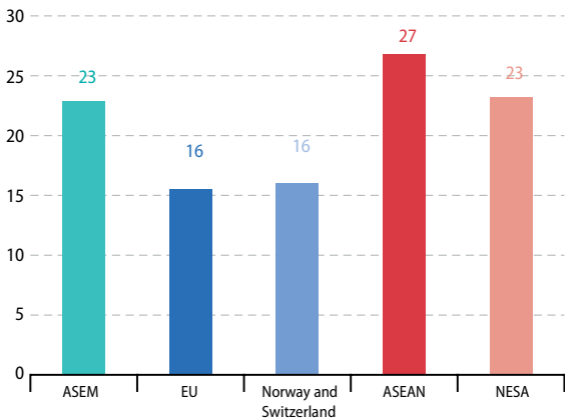
Unemployment rate in ASEM, 1996–2014 (% of the labour force)



(¹) Norway and Switzerland are ASEM members since 2012

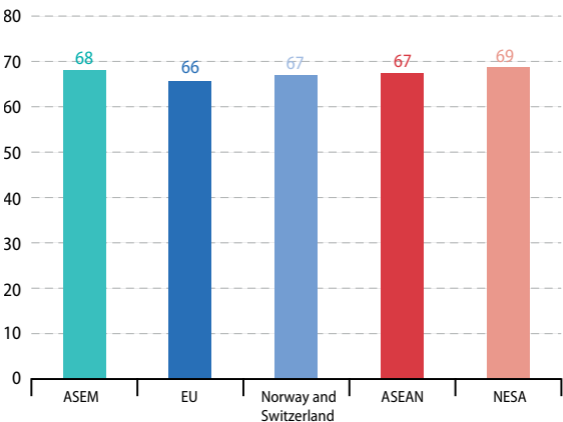
Source: International Labour Organization

Share of ASEM population aged 0 to 14 years, 2014 (% of total population)



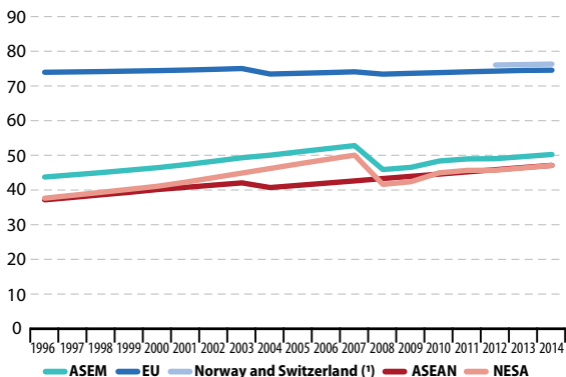
Source: World Bank World Development indicators

Share of ASEM population of working age (aged 15 to 64 years), 2014 (% of total population)



Source: World Bank World Development indicators

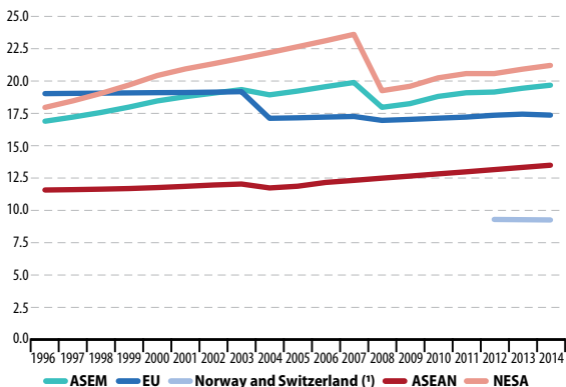
Share of urban population in ASEM, 1996–2014 (% of total population)



(!) Norway and Switzerland are ASEM members since 2012.

Source: United Nations, World Urbanization Prospects

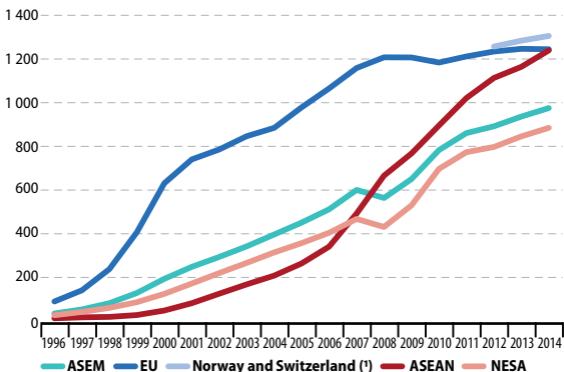
Population in cities with more than 1 million inhabitants in ASEM, 1996–2014 (% of total population)



(!) Norway and Switzerland are ASEM members since 2012.

Source: United Nations, World Urbanization Prospects

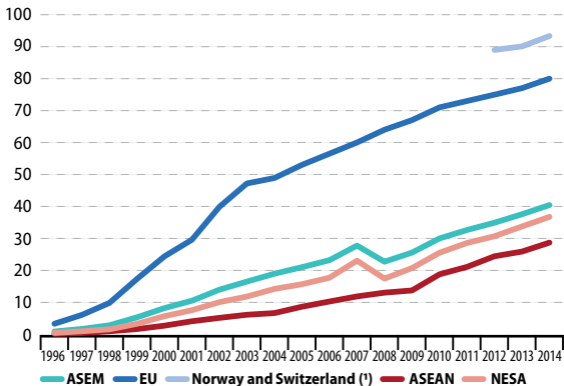
Mobile phone penetration in ASEM, 1996–2014 (subscriptions per thousand inhabitants)



(*) Norway and Switzerland are ASEM members since 2012

Source: International Telecommunication Union

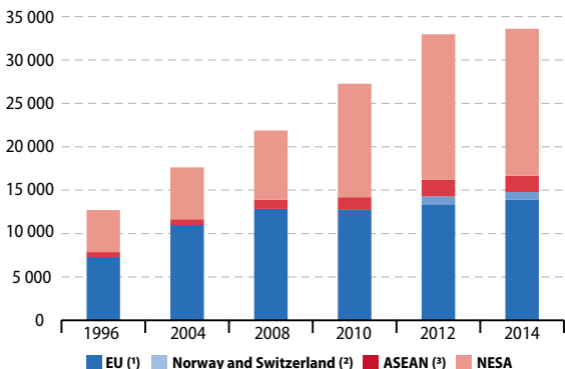
Internet users in ASEM, internet use in the last 12 months, 1996–2014 (% of the population)



(*) Norway and Switzerland are ASEM members since 2012

Source: Eurostat (online data code: isoc_ci_ifp_iu) for EU, Norway and Switzerland; International Telecommunication Union for other ASEM partners

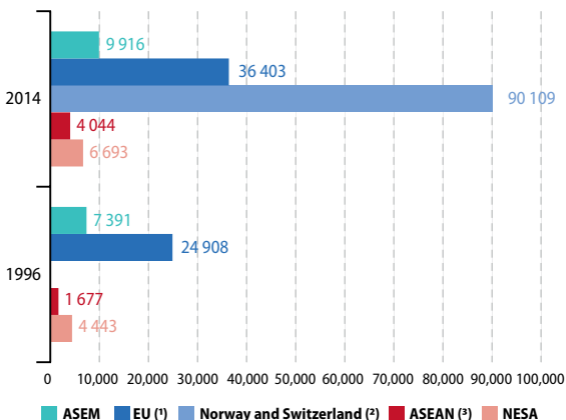
ASEM gross domestic product at market prices, by enlargement round (billion current EUR)



(¹) Malta not available for 2014; (²) Norway and Switzerland are ASEM members since 2012; (³) Myanmar only available from 2012 onwards

Source: World Bank national accounts data, OECD national accounts data

GDP per capita in ASEM, 1996 and 2014 (current USD)



(¹) Malta not available for 2014; (²) Norway and Switzerland are ASEM members since 2012; (³) Myanmar not available for 1996

Source: WorldBank national accounts data and OECD national accounts data

ASIA-EUROPE MEETING (ASEM)

For information on the Asia-Europe Meeting:

ASEM Infoboard: <http://www.aseminfoboard.org>



The future of the Asia-Europe Meeting (ASEM): Looking ahead into ASEM's third decade



ASEM at 20: The challenge of connectivity

EUROSTAT COOPERATION RESOURCES

For information on Eurostat's statistical cooperation activities: <http://ec.europa.eu/eurostat/web/international-statistical-cooperation/overview>

E-mail: ESTAT-STATISTICAL-COOPERATION@ec.europa.eu



**Asia-Europe Meeting
A statistical portrait**

2016 edition



**Essential SNA:
Building the basics**

2014 edition



Snapshot

A user-friendly tool to
assess National Statistical
Systems



**Guide to statistics in
European Commission
development cooperation**

2013 edition

See 'Statistics explained' for further insight into Eurostat's international cooperation activities:

http://ec.europa.eu/eurostat/statistics-explained/index.php/Non-EU_countries

See in particular the article 'Asia-Europe Meeting (ASEM) - a statistical portrait - key facts'

http://ec.europa.eu/eurostat/statistics-explained/index.php/Asia-Europe_Meeting_%28ASEM%29_-_a_statistical_portrait_-_key_facts

See also

European External Action Service (EEAS):

<http://eeas.europa.eu>

