

Asylum and managed migration statistics

2020 edition



COMPACT
GUIDES

eurostat 

Asylum and managed migration statistics in a nutshell

Eurostat's statistics on asylum and managed migration provide detailed information on third-country nationals (non-EU citizens, including stateless persons)

- applying for asylum
- entering and residing in an EU country, or
- who are subject to immigration law enforcement.

A large proportion of the statistics are closely linked with EU legislation on asylum and managed migration, in particular:

- international protection
- the Dublin procedure
- return of non-EU nationals who have been staying in the EU under irregular circumstances
- residence and access to work
- guaranteeing a common set of rights for third-country nationals residing in the EU.

The data provided by the Member States are based on the Migration Statistics Regulation (Regulation (EC) No 862/2007). They are made available on Eurostat's website in the form of tables, multi-dimensional databases and analytical articles.

What information is available?

Asylum and managed migration statistics cover the following areas:

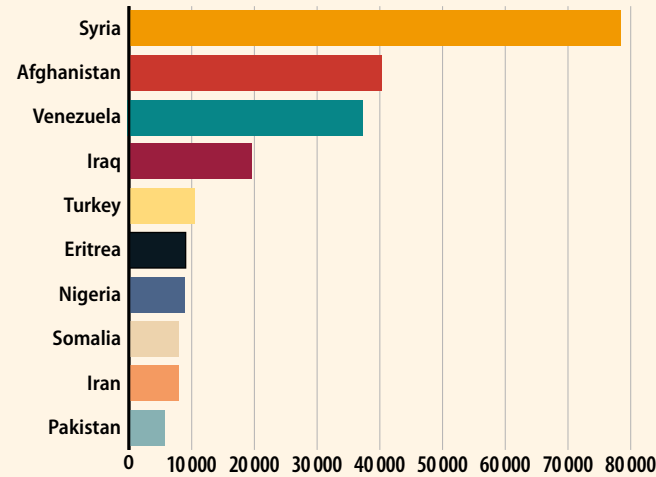
- asylum statistics
- Dublin procedure statistics
- statistics on residence permits
- statistics on the enforcement of immigration legislation.

Asylum statistics provide information on:

- the number of asylum seekers (asylum applicants and first-time asylum applicants)
- unaccompanied minors applying for asylum
- decisions on asylum applications (first instance decisions and final decisions in appeal or review)
- the number of resettled persons.

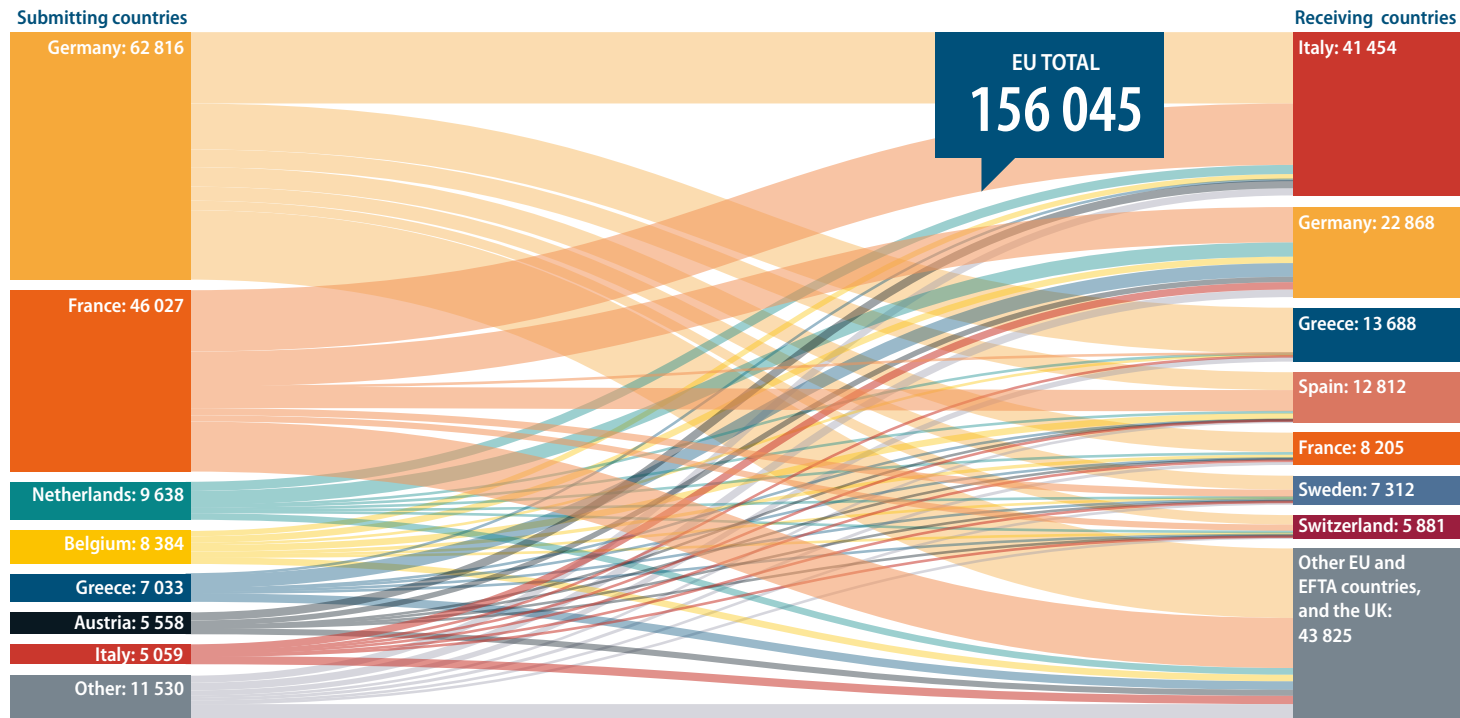
These data are presented by citizenship, age group and sex.

Top 10 citizenships granted protection status in the EU, 2019



Note: Figures include positive decisions issued at first and final instance, and decisions may refer also to applications lodged before 2019.
Source: Eurostat (online data codes: migr_asydcfst and migr_asydcfina)

Outgoing Dublin requests in the EU (2018)



Source: Eurostat (online data code: migr_dubro)

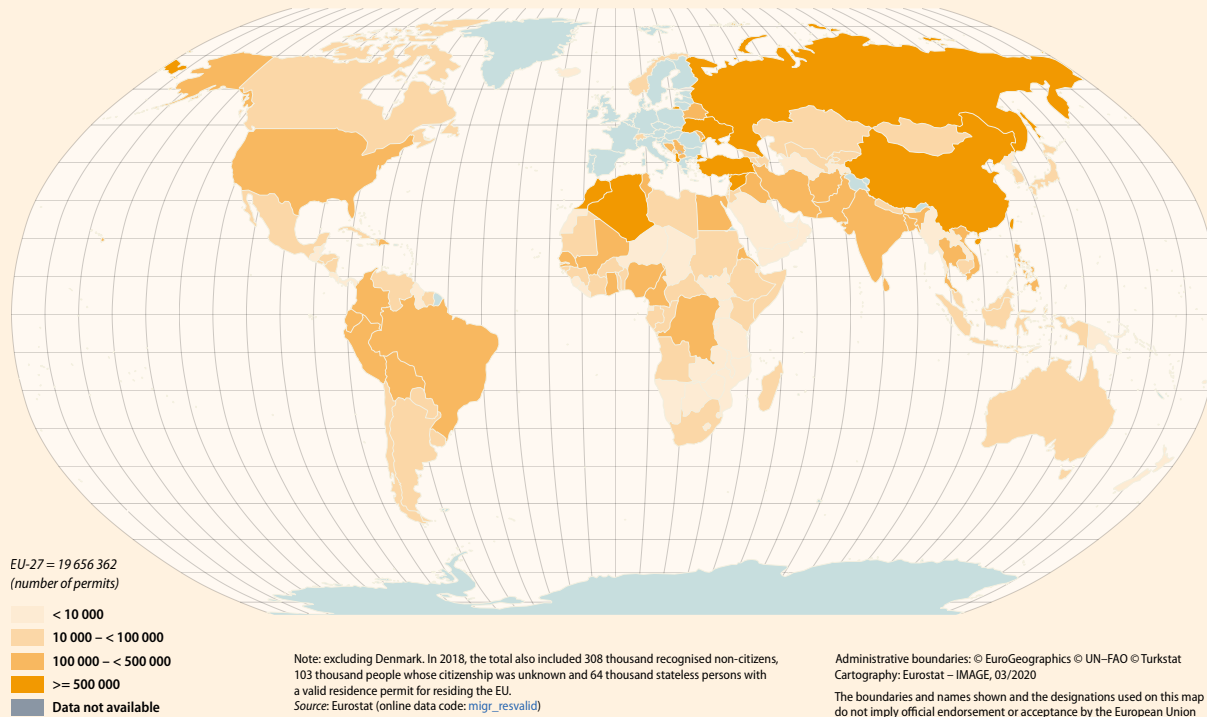
Dublin statistics provide information on how the Dublin Regulation is being applied. The regulation itself establishes which Member State is responsible for the examination of the asylum application, based on a list of criteria (from family considerations, to whether the applicant has first entered the EU regularly or irregularly).

Eurostat's statistics cover:

- the number of requests submitted and received by the Member States to take charge of or to take back an asylum applicant
- the number of accepted and rejected requests
- the number of people transferred from one EU country to another.

The data are broken down by the countries submitting and receiving requests, and where appropriate, they are broken down by the type of request, the criteria forming the basis of the request, the type of decision, and the duration of the transfer.

Distribution of valid residence permits in the EU by country of citizenship, 2018 (number of permits)



Residence permit statistics provide information on non-EU nationals who have been granted an authorisation to stay for at least 3 months in an EU country. They include:

- the number of first residence permits granted
- the number of permits for a change of immigration status or reason to stay
- the number of valid residence permits at the end of the year
- data on some specific types of residence permits directly connected with EU directives in the field of EU migration policy (e.g. EU Blue Card, Single Permit, residence permits for seasonal work purposes, long-term residence permits, intra-corporate transfers).

These data are generally broken down by citizenship, the reason for issuing the permit, and length of validity.

Children in migration statistics

This special section presents statistics on non-EU nationals aged under 18. It covers:

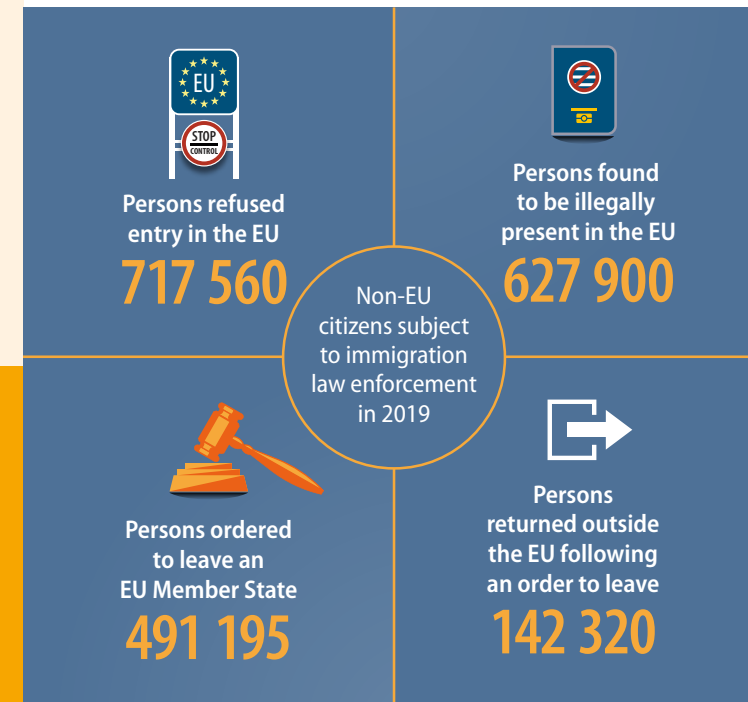
- asylum statistics
- residence permit statistics
- statistics on the enforcement of immigration legislation.

These data are broken down by citizenship, age group and sex.

Statistics on the enforcement of immigration legislation provide information on the number of third-country nationals:

- refused entry at EU external borders
- found to be illegally present in the territory of an EU country
- who have been issued an order to leave an EU country, or
- who have been returned from an EU country following an order to leave.

These data are broken down by citizenship. In addition, data on entry refusals are broken down by grounds for refusal and type of border, while data on apprehensions are broken down by sex and age group.



Source: Eurostat (online data codes: [migr_eipre](#), [migr_eiord](#), [migr_eirtn](#) and [migr_eirfs](#))

Dissemination products



Statistics Explained

An official Eurostat website presenting articles on statistical topics in a clear, understandable and accessible way.

<https://ec.europa.eu/eurostat/statistics-explained>



Statistical articles

- Migration and migrant population statistics
- People in the EU - statistics on origin of residents
- EU citizens living in another Member State - statistical overview
- EU and EFTA born population living in another EU or EFTA country - statistical overview
- Enforcement of immigration legislation statistics

Topics

- Acquisition of citizenship
- Asylum
- First and second-generation immigrants
- Migrant integration
- Migration by area and region
- Residence permits

Online publications

- First and second-generation immigrants - a statistical overview
- Migrant integration statistics

Methodology

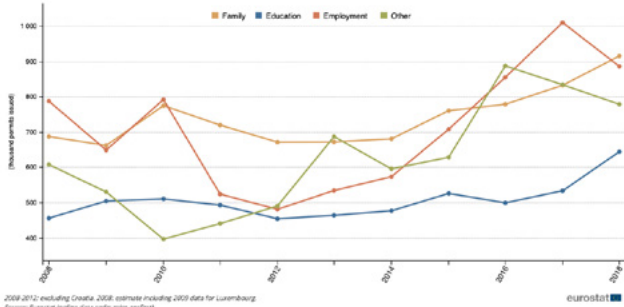
- Background articles
- Migrant integration statistics introduced
- Residence permits – a methodological and analytical overview

Residence permits - statistics on first permits issued during the year

Highlights

- Trend** In 2018, some 3.2 million residence permits were issued across the EU to people from non-member countries.
- Trend** In 2018, the main reason for a first residence permit being issued in the EU was for family reasons (915 000 first residence permits).
- Trend** There were 527 000 first residence permits issued across the EU to citizens of Ukraine in 2018; this was 2.6 times as high as the number to citizens of China (206 000, the second highest value).

Number of first residence permits issued by reason, EU-28, 2008-2018



ASYLUM AND MANAGED MIGRATION DATABASE

Overview 'Population'

Background

Data

Main tables

DATABASE

Visualisations

Publications

Methodology

Legislation

- Asylum and managed migration (mig)
- Asylum and Dublin statistics (mig_asy)
- Enforcement of Immigration Legislation (mig_eil)
- Residence permits (mig_res)
- Children in migration (asylum and managed migration) (mci)
- Asylum statistics on children (mci_asy)
- Residence permits statistics on children (mci_res)
- Enforcement of immigration legislation statistics on children (mci_eil)



Asylum and first time asylum applicants by citizenship, age and sex annual aggregated data (rounded) [mig_asyappctz]

Last update: 02-04-2020

*Data collection year

Country of citizenship (Euro-EU27 from 2020)

Year	2011	2012	2013	2014	2015	2016	2017	2018	2019
European Union - 27 countries	225,260	262,130	350,490	405,510	584,180	1,282,040	1,221,195	877,470	608,335
European Union - 28 countries	299,620	369,690	503,290	601,360	826,760	1,820,090	1,580,560	1,123,290	842,210
Belgium	28,280	35,010	28,070	27,830	27,730	46,840	18,280	18,240	22,530
Bulgaria	1,020	2,960	2,800	7,140	12,880	26,360	34,430	23,890	2,910
Croatia	770	750	760	890	1,140	3,310	1,470	1,480	1,840
Cyprus	1,000	2,960	2,950	7,170	12,880	26,360	34,430	23,890	2,910
Denmark	48,480	13,240	27,400	128,700	203,640	474,710	745,140	222,160	184,160
Estonia	70	60	70	100	100	200	200	100	100
Finland	1,030	1,290	950	940	4,030	3,270	2,240	2,830	3,470
France	88,670	8,460	8,670	8,860	8,430	13,910	31,210	58,450	46,460
Germany	1,740	4,430	2,500	4,460	5,610	14,760	15,750	36,810	54,760
Greece	34,770	50,170	64,440	1,080	430	710	2,270	1,970	100
Hungary	30,660	46,610	13,030	26,000	68,760	141,310	184,270	197,410	199,410
Ireland	40	40	40	40	40	40	40	40	40
Italy	3,470	1,770	1,470	1,240	1,740	8,340	5,260	120,460	64,710
Lithuania	70	70	70	70	70	70	70	70	70
Latvia	40	40	40	40	40	40	40	40	40
Luxembourg	2,830	3,130	2,070	3,970	1,730	2,390	2,490	2,370	2,370
Malta	70	70	70	70	70	70	70	70	70
Netherlands	160	1,890	2,080	3,230	3,890	1,840	1,840	1,840	2,120
Poland	18,130	14,280	13,070	15,860	42,170	49,470	39,760	39,510	35,510
Portugal	11,240	16,620	17,410	17,200	26,870	88,140	40,290	24,710	15,710
Romania	830	6,980	16,720	15,640	16,820	12,190	12,260	1,640	4,110
Slovakia	180	270	290	300	440	800	1,400	1,200	1,800
Slovenia	800	1,730	2,810	1,490	1,890	1,890	1,890	1,890	2,130
Spain	740	300	290	270	380	270	1,310	3,470	2,870
Sweden	740	460	770	480	370	500	500	500	570
Switzerland	1,930	2,810	3,090	3,210	3,620	5,890	4,390	4,390	4,390
United Kingdom	24,830	29,460	54,830	94,870	81,480	162,460	188,760	201,330	212,860
Other	24,230	26,910	24,800	20,980	21,790	40,140	39,770	34,760	38,840
Other EU	40	70	110	130	190	1,120	1,090	1,090	270
Liechtenstein	100	70	70	70	70	70	70	70	70
Norway	18,670	6,790	9,690	11,300	11,470	190	490	930	2,060
Switzerland	18,470	28,610	28,480	21,300	22,840	39,490	37,240	38,210	35,140
Total	395,120	561,460	870,830	994,610	1,464,730	3,290,990	3,282,740	2,242,610	1,604,950

Database

Data on asylum and managed migration can be viewed from multi-dimensional databases using Data Explorer. This tool allows users to select across all dimensions of a table (i.e. geography, time, citizenship).

<https://ec.europa.eu/eurostat/web/asylum-and-managed-migration/data/database>

Main tables



This section offers a selection of the most important data, extracted from Eurostat's statistical database and presented in a user-friendly way as tables, graphs or maps.

<https://ec.europa.eu/eurostat/web/asylum-and-managed-migration/data/main-tables>

ASYLUM AND MANAGED MIGRATION MAIN TABLES

Overview 'Population'

Background

Data

MAIN TABLES

Database

Visualisations

Publications

Methodology

Legislation

- Asylum and managed migration (Lmig)
- Asylum and first time asylum applicants - monthly data (rounded) (tps00189)
- Persons subject of asylum applications pending at the end of the month - monthly data (tps00190)
- Asylum and first time asylum applicants - annual aggregated data (rounded) (tps00191)
- First instance decisions on asylum applications by type of decision - annual aggregated data (tps00192)
- Final decisions on asylum applications - annual data (tps00193)
- Asylum applicants considered to be unaccompanied minors - annual data (tps00194)
- Resettled persons - annual data (tps00195)
- First permits by reason (tps00170)
- All valid permits by reason on 31 December of each year (tps00171)

Data visualisations

A range of interactive and static graphics presenting Eurostat data in the clearest and most simple way.

<https://ec.europa.eu/eurostat/web/asylum-and-managed-migration/visualisations>

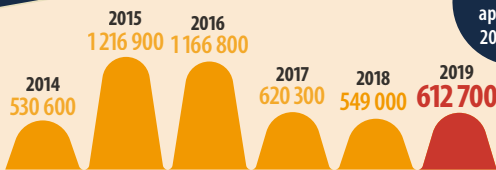
DATA VISUALISATION ON ASYLUM

The infographic below shows first time asylum applications from third country nationals registered in the EU. Member States, the United Kingdom and EFTA countries in 2019.

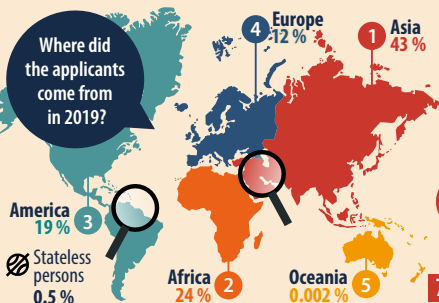


Asylum seekers in the European Union

THE 2019 SITUATION



Where did the applicants come from in 2019?



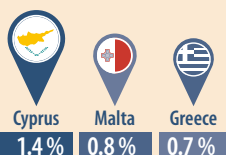
Main 3 countries of citizenship



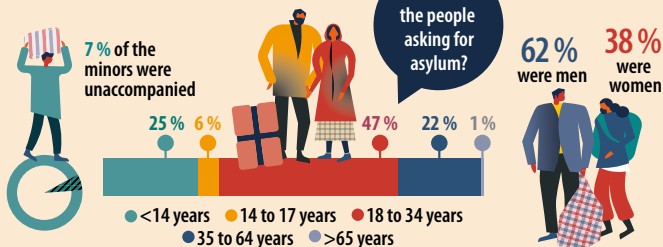
Main 3 receiving countries by ...



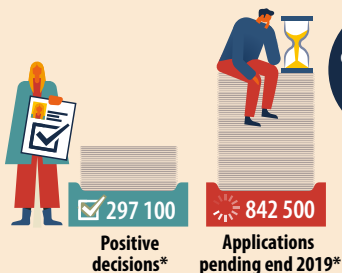
... number of applicants



Who were the people asking for asylum?



Outcomes of applications and resettlement



Resettled refugees**

21 200



* Figures include positive decisions issued at first and final instance, and decisions may refer also to applications lodged before 2019.

** Resettlement means the transfer of third country nationals, on request from UNHCR, to a Member State where they are being granted protection status.

User support

Eurostat and other members of the European Statistical System have set up a system of multilingual user support. To access it click the 'Help' tab on Eurostat's home page.

<https://ec.europa.eu/eurostat/help/support>



USER SUPPORT

Eurostat multilingual user support

We offer a Multilingual User Support for European statistics that allows you to submit questions in the language of your choice.

To send a request please choose an appropriate User Support centre from the list below and use the subsequent registration form.

français Nederlands Deutsch	български	čeština	dansk (*)
Deutsch	eesti keel	English	ελληνικά
español	français	hrvatski	italiano
ελληνικά	latviešu valoda	lietuvių kalba	français Deutsch
magyar	Malti (*) English	Nederlands	Deutsch
polski	português	româna	slovenski jezik
slovenský jazyk	suomi (*)	svenska	íslenska (*)
norsk	Deutsch français italiano	Crnogorski	македонски
Shqip	Српски (Тиркивица) srpski (latinica)	türkçe	bosanski hrvatski Српски
shqip srpski	Central support		

Media and institutional support

The Eurostat Press Office is especially useful for journalists. It publishes news on a range of data relating to the EU, the euro area, EU countries, and their partners.

To receive press releases on the day of publication and the release calendars:

Tel: (+352) 4301 33444, eurostat-pressoffice@ec.europa.eu

To request data or ask questions on Eurostat statistics:

Tel: (+352) 4301 33408, eurostat-mediasupport@ec.europa.eu

Follow Eurostat on Twitter:
twitter.com/EU_Eurostat