

# EU Agricultural Prices in 2004<sup>1</sup>

## Statistics in focus

### AGRICULTURE AND FISHERIES

27/2005

#### Agriculture

Author

Dolores LINARES

## Contents

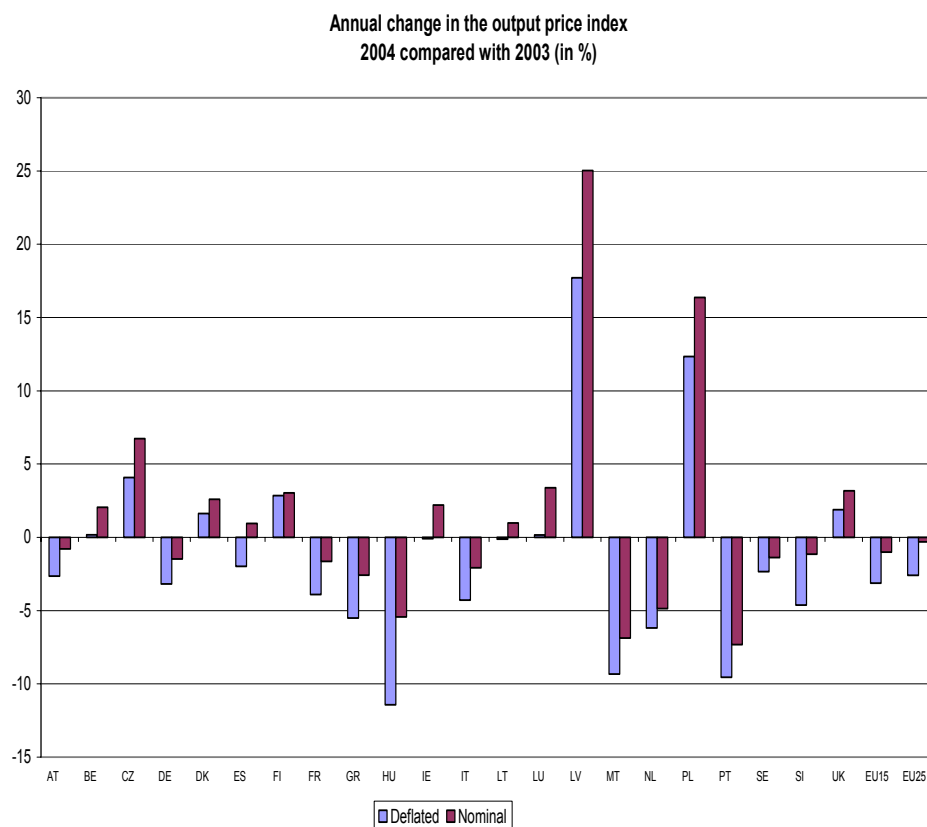
Output prices decreased by 2.5% .....

Input prices increased by 1.6% .  
.....

Terms of Trade down by 4.2% ...  
.....



Manuscript completed on: 19.05.2005  
Data extracted on: 4.05.2005  
ISSN 1562-1340  
Catalogue number: KS-NN-05-027-EN-N  
© European Communities, 2005



The Agricultural Price Index figures for 2004 indicate that output prices for the European Union (EU-25) went down by 0.2% in nominal terms compared to 2003. When adjusted for inflation this becomes a 2.5% decrease. After a slight recuperation of real output prices in 2003 (1.0%), these have returned to a negative rate of change. The decrease is particularly due to a sharp drop in the real prices of *crop products* (-5.2%), mainly as result of the extraordinary harvest of 2004.

The real price index for the *Means of Agricultural Production*, i.e. the input price index shows an increase of 1.6% for EU-25, breaking the decrease observed in the previous two years.

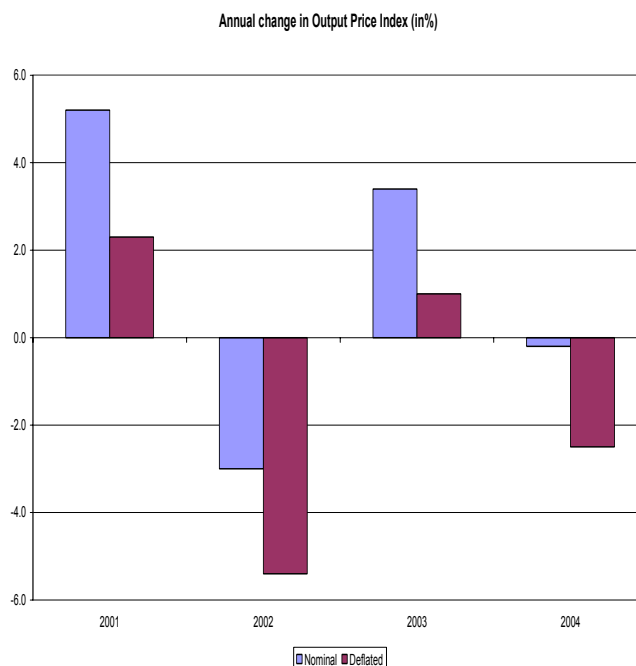
Among the 22 Member States, (see graph) for which information is available, 14 had a decrease in their real output price index overall, especially Hungary (-11.4%), Portugal (-9.5%) and Malta (-9.3%). Falls of more than 4% were recorded in the Netherlands (-6.2%), Greece (-5.5%), Slovenia (-4.6%) and Italy (-4.3%).

<sup>1</sup> Eurostat and the Member States are rebasing the agricultural price indices from 1995=100 to 2000=100, and all the indices in this report are now expressed on the new base. Due to a lack of data, the estimate does not include: Cyprus, Estonia and Slovakia. In addition, Eurostat has made ad hoc calculations for Italy and Portugal, which provide the indices in the old base 1995=100 (further details may be found in the methodological notes).

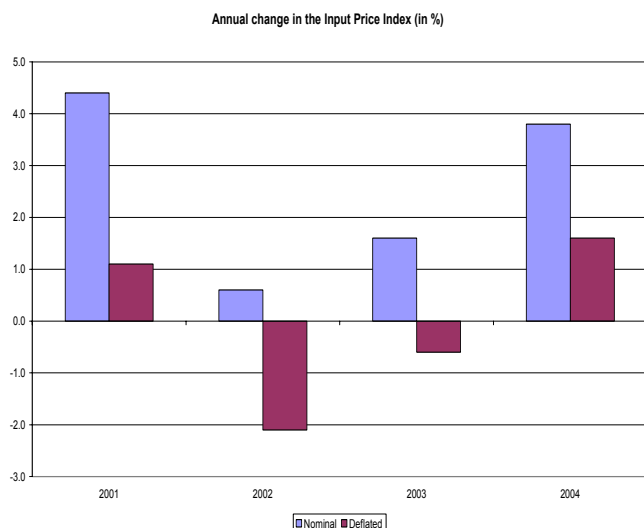
## Output prices decreased by 2.5%

Real output prices for EU-25 decreased by 2.5% compared to 2003. *Crop prices* went down by 5.2% with all individual crop groups within the category showing decreases, except olive oil (+6.6%) and *Forage plants* (+5.4%). The largest fall in prices were recorded for *Eggs* (-13.8%) and *Vegetables and horticultural products* (-10.6%). Real price decreases were also significant for *Wine* (-5.3%) and *Other crop products* (-3.3%).

Prices for *Animals and animal products* remained almost the same than a year before (+0.5%) because the increase on the price of *animals* almost offset the fall of the prices of *Animal products*. The most important price rises were observed for *Pigs* (+8.6), after two consecutive years of sharp decreases, for *Other animal products* (+3.9%) and *Cattle* (+1.9%). In contrast, the price for *Eggs* showed a significant decline which makes the index more in line with the evolution in the years 2001 and 2002. The price of Milk went down by 1.6% continuing the long downwards trend as can be seen in the previous years. 11 Member States had a drop in the deflated output prices of *animals and animal products*, ranging from -0.3% in Spain to -4.4% in Portugal and Sweden. In contrast, prices increased significantly in Latvia (+19.5%), Poland (+19.3%) and Lithuania (11.5%).



## Input prices increased by 1.6%



The deflated index of the purchase prices of the means of agricultural production increased by 1.6% from the previous year. The real price index of *Goods and*

*services for current consumption in agriculture (Input I)* went up 2.4%, breaking the downward trend observed for the period 2000-2003. This was mainly due to the prices of *Energy; lubricants, Fertilisers and soil improvers and Animal feedingstuffs* which all registered increases over 3%. On the other hand, prices showed falls for *Seeds and planting stock, Veterinary expenses and Plant protection products and pesticides* which was the product with the most significant decrease, -1.6%. The real price index for *Goods and services contributing to Agricultural investment (Input II)* had a small increase (+0.7%). All the components show increase on prices, being the most relevant the 1.3% registered for buildings.

Among the 22 Member States for which information is available only 4 countries -Malta, Belgium, Luxembourg and Lithuania- show a negative rate of change between -1.4% and -4.3%. In contrast, there were 18 Member States with a positive rate of change, ranging from +0.2% in the Netherlands to +5.6% in the United Kingdom.

## Terms of Trade down by 4.2%

Annual change in agricultural Terms of Trade				
	( % )			
	2001	2002	2003	2004
EU25	1.2	-3.4	1.6	-4.2
EU15	1.2	-3.0	1.9	-4.7
BE	1.9	-9.8	3.1	1.7
CZ	5.9	-8.5	-2.2	0.2
DK	1.5	-10.8	-3.4	-0.5
DE	3.1	-6.0	0.7	-5.0
EE	:	:	:	:
EL	3.9	4.1	4.7	-9.4
ES	0.2	-3.5	4.1	-2.8
FR	0.3	-3.7	1.9	-5.3
IE	-0.2	-5.7	-2.7	-1.2
IT	1.0	0.2	3.1	-6.6
CY	:	:	:	:
LV	1.1	-3.4	-6.7	15.7
LT	19.0	-4.4	-6.7	4.4
LU	-1.7	-3.4	-0.3	3.2
HU	-5.1	-2.8	0.1	-13.9
MT	8.6	-0.2	-3.6	-8.1
NL	0.2	-3.3	-0.6	-6.3
AT	4.7	-4.4	-1.5	-3.9
PL	-2.2	-11.3	-1.6	8.2
PT	-0.8	-0.7	-0.7	-11.4
SI	-2.6	-2.2	-1.4	-9.3
SK	:	:	:	:
FI	2.9	-2.0	-5.8	0.2
SE	0.0	-4.7	-3.5	-5.0
UK	4.5	-4.3	3.8	-3.6

The agricultural terms of trade are calculated by dividing the output price index by the input price index. Since it is a ratio, the movement in both these indices has an effect. The rise in the real prices of means of production (+1.6%) will reduce the terms of trade figure, since the cost of items is greater, and the decrease in the real output prices (-2.5%) will also have a negative impact in the terms of trade figure. The combination of both effects resulted in a decrease of the terms of trade for the EU-25 of -4.2%, compared to 2003.

Across Member States, there were 15 countries with a negative rate of change. For Malta, Slovenia, Greece, Portugal and Hungary, this was between -8% and -14%. In contrast, the evolution was positive for 7 Member States with a range which goes from +0.2% in Finland and the Czech Republic to +15.7% in Latvia.

### ➤ ESSENTIAL INFORMATION – METHODOLOGICAL NOTES

Calculation of national indices: The EU Agricultural Price Indices are calculated by each Member State on the basis of the Laspeyres formula with base and reference year 2000.

The value weight attached to each elementary index in the output index is equal to the value of the sales of this product (exclusive of VAT) over the base period.

Means of production have to be valued at the purchase price which is the price the purchaser actually pays for the products. It includes *taxes less subsidies on products* (but excludes *deductible taxes like deductible VAT*).

The index is expressed in the form of the weighted average of the elementary indices with fixed base weights. The weights used are values (of sales or purchases) and not quantities. In the case of highly seasonal products such as fresh fruits and fresh vegetables the method of variable baskets with fixed monthly weights in the base year is used for the monthly indices. Thus for each of the two groups (*Fresh fruits* and *Fresh vegetables*) each Member State determines 12 monthly baskets of representative products.

Calculation of indices for EU: for this purpose the following steps should be applied:

(i) Estimation of the API for the European Monetary Union (EMU) with the national weights.

(ii) Conversion of the EMU weight and weights of the non-EMU Member States into Purchasing Power Standards (PPS);

(iii) Calculation of the API for the EU with the PPS weights

Availability of data and Eurostat estimations: When writing these notes the following information was available in Eurostat:

Weights: For EU-25, weights for the new rebasing are available for all the Member States except Cyprus, Italy, Latvia, Poland and Portugal. The symbol (:) is used when data are not available.

For calculating the weights for EU-25, Eurostat has made the estimation without Cyprus, Latvia and Poland. For Italy and Portugal weights were estimated from the Agriculture Economic Accounts.

Indices: In the new base, price indices for year 2004 are available for all the Member States except for Cyprus, Italy, Estonia, Slovakia and Portugal. For Italy and Portugal, price indices were provided in the old base 1995=100.

**Table 1**  
**EU Index of producer prices of agricultural products:**  
**Rates of change of the price indices for EU-25\***

API Code		%			
		2001	2002	2003	2004
<b>NOMINAL INDICES</b>					
140000	<b>AGRICULTURAL GOODS OUTPUT (100000+130000)**</b>	<b>5.2</b>	<b>-3.0</b>	<b>3.4</b>	<b>-0.2</b>
100000	<b>CROP OUTPUT (010000 TO 090000)**</b>	<b>4.2</b>	<b>0.7</b>	<b>6.9</b>	<b>-2.9</b>
010000	CEREALS (including seeds)	1.0	-6.6	7.9	0.1
020000	INDUSTRIAL CROPS	7.8	0.1	3.3	1.6
030000	FORAGE PLANTS	17.8	2.0	-1.0	7.8
040000	VEGETABLES AND HORTICULTURAL PRODUCTS	3.6	4.2	6.7	-8.6
050000	POTATOES	33.6	-6.3	15.5	0.4
060000	FRUITS	9.2	4.6	12.1	-4.5
070000	WINE	-16.4	-0.4	5.7	-2.9
080000	OLIVE OIL	-2.8	8.5	8.1	9.5
090000	OTHER CROP PRODUCTS	3.0	-1.1	3.9	-1.5
130000	<b>ANIMAL OUTPUT (110000+120000)</b>	<b>6.1</b>	<b>-6.6</b>	<b>-0.4</b>	<b>3.0</b>
110000	<b>ANIMALS</b>	<b>6.0</b>	<b>-8.6</b>	<b>-0.7</b>	<b>6.0</b>
111000	Cattle	-11.0	6.6	2.3	4.2
112000	Pigs	18.8	-18.7	-6.6	11.2
114000	Sheep and goats	15.9	-1.3	1.7	0.7
115000	Poultry	5.7	-7.6	3.3	2.2
119000	Other animals	10.6	-16.1	15.0	0.1
120000	<b>ANIMAL PRODUCTS</b>	<b>6.1</b>	<b>-3.5</b>	<b>0.5</b>	<b>-0.9</b>
121000	Milk	-2.0	-4.1	-1.5	0.6
122000	Eggs	0.0	0.5	15.6	-11.7
129000	Other animal products	12.5	3.9	-4.2	5.6
<b>DEFLATED INDICES</b>					
140000	<b>AGRICULTURAL GOODS OUTPUT (100000+130000)**</b>	<b>2.3</b>	<b>-5.4</b>	<b>1.0</b>	<b>-2.5</b>
100000	<b>CROP OUTPUT (010000 TO 090000)**</b>	<b>1.4</b>	<b>-2.0</b>	<b>4.3</b>	<b>-5.2</b>
010000	CEREALS (including seeds)	-1.8	-8.8	5.6	-2.3
020000	INDUSTRIAL CROPS	4.7	-2.2	1.3	-0.9
030000	FORAGE PLANTS	14.7	-0.8	-3.6	5.4
040000	VEGETABLES AND HORTICULTURAL PRODUCTS	0.6	1.4	4.1	-10.6
050000	POTATOES	30.0	-8.5	13.1	-1.6
060000	FRUITS	6.1	1.5	9.0	-7.0
070000	WINE	-18.4	-3.2	2.7	-5.3
080000	OLIVE OIL	-5.5	5.0	4.9	6.6
090000	OTHER CROP PRODUCTS	-0.3	-3.8	1.6	-3.3
130000	<b>ANIMAL OUTPUT (110000+120000)</b>	<b>3.1</b>	<b>-8.8</b>	<b>-2.4</b>	<b>0.5</b>
110000	<b>ANIMALS</b>	<b>2.9</b>	<b>-10.8</b>	<b>-2.8</b>	<b>3.5</b>
111000	Cattle	-13.2	4.1	0.1	1.9
112000	Pigs	15.1	-20.6	-8.5	8.6
114000	Sheep and goats	12.8	-4.1	-0.9	-1.8
115000	Poultry	2.5	-9.9	1.0	-0.4
119000	Other animals	7.7	-18.3	11.7	-2.2
120000	<b>ANIMAL PRODUCTS</b>	<b>3.0</b>	<b>-5.7</b>	<b>-1.5</b>	<b>-3.1</b>
121000	Milk	-4.5	-6.2	-3.3	-1.6
122000	Eggs	-2.8	-1.9	13.2	-13.8
129000	Other animal products	8.8	1.0	-6.3	3.9

(\*) Without the inclusion of Cyprus, Estonia and Slovakia

(\*\*) Including fruits (060000) and vegetables (040000)

**Table 2**  
**Index of producer prices of agricultural products:**  
**Rates of change by Member State**

%

	TOTAL AGRICULTURAL GOODS				CROP PRODUCTS				ANIMALS AND ANIM. PRODUCTS				
	2001	2002	2003	2004	2001	2002	2003	2004	2001	2002	2003	2004	
<b>Deflated Indices</b>													
<b>EU25*</b>	2.3	-5.4	1.0	-2.5	1.4	-2.0	4.3	-5.2	3.1	-8.8	-2.4	0.5	<b>EU25*</b>
<b>EU15</b>	2.4	-5.0	1.3	-3.1	1.8	-2.0	4.0	-5.1	2.8	-8.2	-1.8	-0.9	<b>EU15</b>
<b>BE</b>	2.0	-10.8	1.7	0.2	15.9	-13.5	2.6	-5.5	1.2	-10.7	0.6	-1.1	<b>BE</b>
<b>CZ</b>	6.1	-11.0	-3.6	4.1	10.6	-8.7	-0.8	6.0	3.8	-12.4	-5.1	2.8	<b>CZ</b>
<b>DK</b>	5.1	-11.9	-6.4	1.6	-2.3	-3.3	1.4	-0.9	7.8	-14.9	-9.4	2.7	<b>DK</b>
<b>DE</b>	5.3	-7.6	-0.1	-3.2	5.6	-3.9	5.4	-8.7	5.0	-10.0	-4.0	1.1	<b>DE</b>
<b>EE</b>	:	:	:	:	:	:	:	:	:	:	:	:	<b>EE</b>
<b>EL</b>	2.3	3.0	5.3	-5.5	1.6	6.8	7.9	-7.0	3.8	-5.8	-2.1	-1.0	<b>EL</b>
<b>ES</b>	0.2	-6.0	2.2	-2.0	-4.0	-1.9	5.0	-3.2	6.4	-11.5	-1.8	-0.3	<b>ES</b>
<b>FR</b>	1.6	-5.0	1.1	-3.9	2.5	-4.4	3.4	-5.1	0.5	-5.8	-1.8	-2.4	<b>FR</b>
<b>IE</b>	0.3	-8.5	-4.2	-0.1	7.8	-6.1	1.1	-12.0	-1.0	-9.0	-5.1	2.3	<b>IE</b>
<b>IT</b>	2.6	-1.2	2.4	-4.3	3.4	1.8	3.2	-4.7	1.3	-6.4	0.9	-3.4	<b>IT</b>
<b>CY</b>	:	:	:	:	:	:	:	:	:	:	:	:	<b>CY</b>
<b>LV</b>	0.2	-4.6	-5.6	17.7	-3.6	-1.4	1.9	16.8	8.7	-4.1	-14.1	19.5	<b>LV</b>
<b>LT</b>	13.2	-0.9	-9.9	-0.1	11.9	12.1	-9.0	-8.0	14.8	-15.0	-11.1	11.5	<b>LT</b>
<b>LU</b>	-0.6	-4.2	-1.5	0.2	5.3	5.0	2.6	-2.2	-1.9	-6.4	-2.6	0.7	<b>LU</b>
<b>HU</b>	-2.8	-6.7	1.4	-11.4	-16.3	-1.9	15.3	-19.3	11.1	-10.3	-10.5	-2.8	<b>HU</b>
<b>MT</b>	6.8	-1.8	-5.6	-9.3	18.9	0.1	-2.0	-18.0	-1.2	-3.3	-8.5	-1.7	<b>MT</b>
<b>NL</b>	0.9	-5.9	-1.0	-6.2	2.9	-1.3	0.8	-10.0	-1.3	-11.0	-3.3	-1.4	<b>NL</b>
<b>AT</b>	4.3	-6.4	-0.9	-2.6	2.6	-1.0	6.8	-9.4	5.1	-9.0	-4.9	1.3	<b>AT</b>
<b>PL</b>	-1.0	-10.9	0.6	12.3	-6.5	-3.4	12.6	-1.7	1.8	-14.1	-4.9	19.3	<b>PL</b>
<b>PT</b>	2.0	-7.7	0.0	-9.5	2.1	-6.6	1.4	-13.5	1.8	-9.2	-1.9	-4.4	<b>PT</b>
<b>SI</b>	0.4	-6.1	-2.3	-4.6	0.9	-2.8	4.3	-12.8	0.2	-7.7	-5.4	-0.5	<b>SI</b>
<b>SK</b>	:	:	:	:	:	:	:	:	:	:	:	:	<b>SK</b>
<b>FI</b>	2.5	-3.4	-5.8	2.8	-2.8	-0.4	1.6	2.9	5.1	-4.7	-9.3	2.7	<b>FI</b>
<b>SE</b>	2.4	-4.7	-3.8	-2.3	6.8	-6.8	-0.5	0.8	-0.3	-3.4	-5.7	-4.4	<b>SE</b>
<b>UK</b>	7.0	-5.8	4.9	1.9	10.6	-8.3	5.0	2.8	4.5	-4.2	5.2	1.2	<b>UK</b>

(\*) Without the inclusion of Cyprus, Estonia and Slovakia

**Table 3**  
**Index of purchase prices of the means of agricultural production:**  
**Rates of change of the price indices for EU-25\***

API		2001	2002	2003	2004
Code	Nominal Indices				%
220000	<b>INPUT TOTAL (INPUT 1 + INPUT 2)</b>	<b>4.4</b>	<b>0.6</b>	<b>1.6</b>	<b>3.8</b>
200000	<b>GOODS AND SERVICES CURRENTLY CONSUMED IN AGR. (INPUT 1)</b>	<b>-17.3</b>	<b>-0.1</b>	<b>1.4</b>	<b>4.8</b>
201000	SEEDS AND PLANTING STOCK	4.2	2.2	3.3	2.1
202000	ENERGY; LUBRICANTS	-0.1	-3.0	5.2	6.2
203000	FERTILISERS AND SOIL IMPROVERS	12.8	-3.7	0.9	6.0
204000	PLANT PROTECTION PRODUCTS AND PESTICIDES	0.7	0.7	0.0	0.7
205000	VETERINARY EXPENSES	2.2	1.2	3.1	1.9
206000	ANIMAL FEEDINGSTUFFS	6.9	-0.8	-0.4	5.8
207000	MAINTENANCE OF MATERIALS	3.3	4.5	4.1	4.1
208000	MAINTENANCE OF BUILDINGS	3.5	2.3	2.2	2.6
209000	OTHER GOODS AND SERVICES	2.5	2.0	1.0	3.6
210000	<b>GOODS AND SERVICES CONTRIBUTING TO AGR. INVESTMENT (INPUT 2)</b>	<b>2.7</b>	<b>2.4</b>	<b>2.1</b>	<b>2.8</b>
211000	MATERIALS	2.1	2.1	1.9	2.6
212000	BUILDINGS	3.2	2.5	2.2	3.5
219000	OTHER GOODS AND SERVICES	4.4	3.2	3.0	3.0
<b>Deflated indices</b>					
220000	<b>INPUT TOTAL (INPUT 1 + INPUT 2)</b>	<b>1.1</b>	<b>-2.1</b>	<b>-0.6</b>	<b>1.6</b>
200000	<b>GOODS AND SERVICES CURRENTLY CONSUMED IN AGR. (INPUT 1)</b>	<b>-19.4</b>	<b>-2.5</b>	<b>-0.8</b>	<b>2.4</b>
201000	SEEDS AND PLANTING STOCK	1.0	-0.5	0.5	-0.2
202000	ENERGY; LUBRICANTS	-3.2	-5.4	2.9	3.8
203000	FERTILISERS AND SOIL IMPROVERS	9.8	-6.0	-1.3	3.7
204000	PLANT PROTECTION PRODUCTS AND PESTICIDES	-1.9	-1.7	-2.2	-1.6
205000	VETERINARY EXPENSES	-1.2	-0.8	-0.1	-0.9
206000	ANIMAL FEEDINGSTUFFS	3.7	-3.3	-2.7	3.4
207000	MAINTENANCE OF MATERIALS	0.6	2.1	2.0	2.0
208000	MAINTENANCE OF BUILDINGS	0.9	0.0	0.1	0.5
209000	OTHER GOODS AND SERVICES	-0.3	-0.4	-1.2	1.4
210000	<b>GOODS AND SERVICES CONTRIBUTING TO AGR. INVESTMENT (INPUT 2)</b>	<b>-0.4</b>	<b>-0.2</b>	<b>-0.1</b>	<b>0.7</b>
211000	MATERIALS	-0.8	-0.3	-0.2	0.5
212000	BUILDINGS	0.5	0.1	0.1	1.3
219000	OTHER GOODS AND SERVICES	1.1	0.3	0.5	0.7

(\*) Without the inclusion of Cyprus, Estonia and Slovakia

**Table 4**  
**Index of purchase prices of agricultural products:**  
**Rates of change by Member State**

%

	INPUT TOTAL (Input 1 + Input 2)				GOODS AND SERV. CONSUMED IN AGRICULTURE (Input 1)				GOODS AND SERV. CONTRIB.TO AGRIC. INVEST. (Input 2)				
	2001	2002	2003	2004	2001	2002	2003	2004	2001	2002	2003	2004	
	Deflated Indices												
<b>EU25*</b>	1.1	-2.1	-0.6	1.6	-19.4	-2.5	-0.8	2.4	-0.4	-0.2	-0.1	0.7	<b>EU25*</b>
<b>EU15</b>	1.1	-2.1	-0.6	1.6	-21.0	-2.4	-0.8	2.3	-0.4	-0.3	-0.1	0.7	<b>EU15</b>
<b>BE</b>	0.1	-1.0	-1.3	-1.5	0.1	-1.3	-1.5	-1.9	0.2	0.5	-0.2	-2.0	<b>BE</b>
<b>CZ</b>	0.1	-2.7	-1.5	3.9	0.5	-3.0	-2.0	4.7	-2.4	-0.9	1.3	-0.4	<b>CZ</b>
<b>DK</b>	3.5	-1.3	-3.1	2.2	4.3	-1.4	-3.9	1.9	0.6	-0.9	0.2	3.0	<b>DK</b>
<b>DE</b>	2.1	-1.8	-0.8	1.9	3.2	-2.3	-1.0	2.5	-0.7	-0.2	-0.2	0.1	<b>DE</b>
<b>EE</b>	:	:	:	:	:	:	:	:	:	:	:	:	<b>EE</b>
<b>EL</b>	-1.6	-1.0	0.5	4.3	-2.1	-1.7	0.8	5.7	0.2	0.5	-0.1	0.0	<b>EL</b>
<b>ES</b>	0.0	-2.6	-1.8	0.9	-0.5	-2.9	-1.9	1.0	2.4	-0.8	-0.8	-0.1	<b>ES</b>
<b>FR</b>	1.3	-1.4	-0.8	1.4	1.6	-2.0	-1.2	1.5	0.5	0.6	0.3	1.3	<b>FR</b>
<b>IE</b>	0.4	-3.0	-1.5	1.2	0.7	-3.3	-1.4	1.6	-0.6	-1.6	-2.3	-0.5	<b>IE</b>
<b>IT</b>	1.6	-1.4	-0.7	2.4	3.0	-2.4	-1.0	2.5	-0.4	0.1	-0.2	2.4	<b>IT</b>
<b>CY</b>	:	:	:	:	:	:	:	:	:	:	:	:	<b>CY</b>
<b>LV</b>	-0.8	-1.3	1.3	1.7	-1.1	-1.3	1.5	1.8	1.0	-1.0	0.0	0.6	<b>LV</b>
<b>LT</b>	-4.8	3.7	-3.4	-4.3	-4.8	3.7	-3.4	-4.3	:	:	:	:	<b>LT</b>
<b>LU</b>	1.1	-0.8	-1.2	-2.9	1.5	-1.5	-1.5	-3.3	0.6	0.2	-0.9	-2.2	<b>LU</b>
<b>HU</b>	2.4	-4.0	1.3	2.8	2.7	-4.8	1.3	3.4	-0.4	1.3	1.5	-0.8	<b>HU</b>
<b>MT</b>	-1.7	-1.6	-2.1	-1.4	-1.7	-1.5	-2.2	-1.4	-3.2	-2.3	-1.1	-1.6	<b>MT</b>
<b>NL</b>	0.7	-2.7	-0.4	0.2	2.5	-3.1	-0.6	:	-1.7	-1.2	-0.4	0.4	<b>NL</b>
<b>AT</b>	-0.4	-2.0	0.7	1.4	-0.3	-3.2	1.0	1.9	-0.6	-0.1	0.3	0.6	<b>AT</b>
<b>PL</b>	1.2	0.4	2.3	3.8	1.4	0.7	2.4	3.4	-1.4	0.3	1.4	11.5	<b>PL</b>
<b>PT</b>	2.8	-7.0	0.8	2.1	3.8	-8.1	0.9	2.5	-3.0	-0.6	-0.1	-0.1	<b>PT</b>
<b>SI</b>	3.1	-4.0	-0.9	5.1	5.2	-5.4	-1.0	4.6	-2.0	-0.4	-0.6	5.9	<b>SI</b>
<b>SK</b>	:	:	:	:	:	:	:	:	:	:	:	:	<b>SK</b>
<b>FI</b>	-0.4	-1.4	0.0	2.6	-0.8	-2.3	-0.3	2.4	0.5	0.3	1.1	3.2	<b>FI</b>
<b>SE</b>	2.4	0.0	-0.3	2.7	2.9	-0.4	-0.4	2.8	0.2	1.5	0.3	2.6	<b>SE</b>
<b>UK</b>	2.3	-1.7	1.1	5.6	3.0	-1.9	1.3	6.2	-2.2	-0.3	0.1	1.6	<b>UK</b>

(\*) Without the inclusion of Cyprus, Estonia and Slovakia

## ***Further information:***

### **Databases**

[EUROSTAT website/Agriculture, forestry and fisheries/Agriculture/Agricultural prices and price indices](#)

---

### **Journalists can contact the media support service:**

Bech Building Office A4/017  
L - 2920 Luxembourg

Tel. (352) 4301 33408  
Fax (352) 4301 35349

E-mail: [eurostat-mediasupport@cec.eu.int](mailto:eurostat-mediasupport@cec.eu.int)

### **European Statistical Data Support:**

Eurostat set up with the members of the 'European statistical system' a network of support centres, which will exist in nearly all Member States as well as in some EFTA countries.

Their mission is to provide help and guidance to Internet users of European statistical data.

The complete details concerning this support network can be found on our Internet site:

[www.europa.eu.int/comm/eurostat/](http://www.europa.eu.int/comm/eurostat/)

---

A list of worldwide sales outlets is available at the:

### **Office for Official Publications of the European Communities.**

2, rue Mercier  
L - 2985 Luxembourg

URL: <http://publications.eu.int>

E-mail: [info-info-opoce@cec.eu.int](mailto:info-info-opoce@cec.eu.int)

---