

# Statistics in focus

## AGRICULTURE AND FISHERIES

THEME 5 – 5/2003

### AGRICULTURE

## Contents

### Cows' milk collection in EU 15

November 2002

# NOVEMBER 2002

## Cows' milk collection decreased by 4.1 % in EU 15

*Franco Zampogna, Alain Bisval*

### Monthly comparison

In most Member States cows' milk collection decreased due to a seasonal influence and a good control of the production.

Ireland reported a decrease of 44.1% compared with October.

Only France and Italy had a higher collection in November compared with the previous month (+0.9% in each case).

### Evolution of cows' milk collection by dairies, November 2001- November 2002

	Collection 1000T	Comparative importance /EU15	Comparison with the previous month (in %)												Rate of change (%)		
			Nov 2001	Nov 2001	Dec 2001	Jan 2002	Feb 2002	Mar 2002	Apr 2002	May 2002	Jun 2002	Jul 2002	Aug 2002	Sep 2002		Oct 2002	Nov 2002
B	230.6	2.6	1.7	2.2	-8.0	11.5	7.8	7.6	-12.8	4.8							
DK	347.8	3.9	5.3	2.8	-9.0	10.1	-0.1	5.8	-4.6	0.5	-2.0	-4.4	0.4	-2.2		1.2	
D	2073.6	23.5	5.1	2.5	-7.5	11.8	-0.4	5.4	-6.0	1.3	-4.9	-4.6	1.9	-3.3		-0.5	
EL	45.7	0.5	-3.1	2.4	-10.7	23.8	6.5	-4.7									
E	468.1	5.3	2.3	-3.2	-4.6	13.9	5.4	3.1	-5.2	0.6	-4.4	-6.9	1.1	-4.5		-4.2	
F	1883.1	21.3	6.5	4.3	-8.0	9.2	6.8	0.9	-12.7	-7.0	-6.3	-1.0	9.4	0.9		0.0	
IRL	260.1	2.9	-44.4	-16.5	40.8	104.3	76.7	18.9	-8.1	-3.2	-9.5	-14.6	-16.6	-44.1		-10.1	
I	771.6	8.7	4.9	8.8	-9.1	16.6	-2.2	0.6	-7.0	1.8	-4.2	-2.4	1.8	0.9		8.1	
L	19.8	0.2	9.3	3.8	-8.9	8.5	3.1	7.6	-6.5	-0.9	-7.3	-5.1	0.0	-2.4		-0.8	
NL	860.5	9.7	4.9	-1.1	-12.0	8.3	5.4	3.4	-3.7	0.8	-1.7	-5.6	3.7	-2.3		-1.8	
A	198.0	2.2	4.5	4.3	-6.0	11.8	1.3	9.6	-8.3	1.3	-5.1	-5.4	1.4	-6.6		0.5	
P	136.7	1.5	5.6	4.6	-2.7	16.6	3.5	6.7	-6.1	-0.5	-7.6	-8.1	-1.2	-5.5		2.5	
FIN	194.0	2.2	6.2	3.3	-8.7	10.8	-1.8	4.6	-5.1	-2.9	-1.3	-4.6	0.6	-0.8		-1.4	
S	257.4	2.9	6.7	2.8	-8.0	11.2	-1.9	3.3	-6.8	-0.8	-2.8	-4.6	0.4	-1.9		-4.0	
UK	1095.7	12.4	6.9	3.3	-7.7	13.3	3.6	6.3	-10.2	-1.3	-5.1	-6.0	0.5	-4.8		-3.7	
EU-15	8842.7	100.0	3.9	2.7	-7.5	13.5	5.3	4.7	-8.1	-1.1	-4.9	-4.9	2.0	-4.1		-0.7	

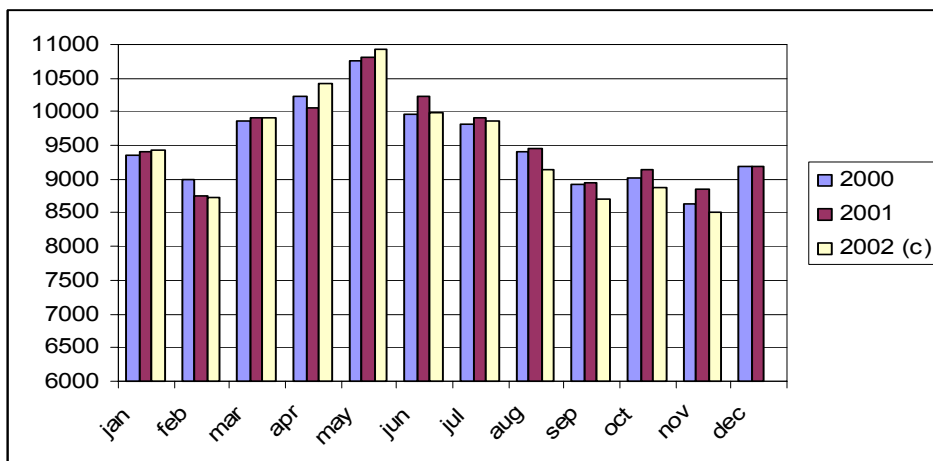
(a) : Rate of increase EU-15 without Greece

(b) : Rate of increase EU-15 without Belgium and Greece

### Annual Comparison

Cows' milk collection in EU-15 decreased by 0.7 % in November 2002 compared with November 2001. The change varied from -10.1% in Ireland to +8.1% in Italy.

### Monthly milk collection EU-15, 1000 t January 2000 – November 2002



(c) data from June to November 2002 are incomplete.

(Source : Eurostat New Cronos 04/02/2003)



# Further information:

## ➤ Databases

NewCronos, Domain ZPA 1

To obtain information or to order publications, databases and special sets of data, please contact the **Data Shop** network:

BELGIQUE/BELGIË	DANMARK	DEUTSCHLAND	ESPAÑA	FRANCE	ITALIA – Roma
<b>Eurostat Data Shop</b> Bruxelles/Brussel Planistat Belgique Rue du Commerce 124 Handelsstraat 124 B-1000 BRUXELLES / BRUSSEL Tel. (32-2) 234 67 50 Fax (32-2) 234 67 51 E-mail: <a href="mailto:datashop@planistat.be">datashop@planistat.be</a> URL: <a href="http://www.datashop.org/">http://www.datashop.org/</a>	<b>DANMARKS STATISTIK</b> Bibliotek og Information Eurostat Data Shop Sejrogade 11 DK-2100 KØBENHAVN Ø Tlf. (45) 39 17 30 30 Fax (45) 39 17 30 03 E-mail: <a href="mailto:bjb@dst.dk">bjb@dst.dk</a> URL: <a href="http://www.dst.dk/bibliotek">http://www.dst.dk/bibliotek</a>	<b>STATISTISCHES BUNDESAMT</b> Eurostat Data Shop Berlin Otto-Braun-Straße 70-72 (Eingang: Karl-Marx-Allee) D-10178 BERLIN Tel. (49) 1888 644 94 27/28 Fax (49) 1888-644 94 30 E-Mail: <a href="mailto:datashop@destatis.de">datashop@destatis.de</a> URL: <a href="http://www.eu-datashop.de/">http://www.eu-datashop.de/</a>	<b>INE Eurostat Data Shop</b> Paseo de la Castellana, 183 Despacho 011B Entrada por Estébanez Calderón E-28046 MADRID Tel. (34-91) 583 91 67/ 583 95 00 Fax (34-91) 583 03 57 E-mail: <a href="mailto:datashop.eurostat@ine.es">datashop.eurostat@ine.es</a> URL: <a href="http://www.datashop.org/">http://www.datashop.org/</a>	<b>INSEE Info Service</b> Eurostat Data Shop 195, rue de Bercy Tour Gamma A F-75582 PARIS CEDEX 12 Tél. (33-1) 53 17 88 44 Fax (33-1) 53 17 88 22 E-mail: <a href="mailto:datashop@insee.fr">datashop@insee.fr</a>	<b>ISTAT</b> Centro di Informazione Statistica Sede di Roma, Eurostat Data Shop Via Cesare Balbo, 11a I-00184 ROMA Tel. (39-06) 46 73 31 02/06 Fax (39-06) 46 73 31 01/07 E-mail: <a href="mailto:dipdff@istat.it">dipdff@istat.it</a> URL: <a href="http://www.istat.it/Prodotti-e/Allegati/Eurostatdatashop.html">http://www.istat.it/Prodotti-e/Allegati/Eurostatdatashop.html</a>
ITALIA – Milano	LUXEMBOURG	NEDERLAND	NORGE	PORTUGAL	SCHWEIZ/SUISSE/SVIZZERA
<b>ISTAT</b> Ufficio Regionale per la Lombardia Eurostat Data Shop Via Fieno 3 I-20123 MILANO Tel. (39-02) 80 61 32 460 Fax (39-02) 80 61 32 304 E-mail: <a href="mailto:mileuro@tin.it">mileuro@tin.it</a> URL: <a href="http://www.istat.it/Prodotti-e/Allegati/Eurostatdatashop.html">http://www.istat.it/Prodotti-e/Allegati/Eurostatdatashop.html</a>	<b>Eurostat Data Shop Luxembourg</b> 46A, avenue J.F. Kennedy BP 1452 L-1014 LUXEMBOURG Tél. (352) 43 35-2251 Fax (352) 43 35-2221 E-mail: <a href="mailto:dslux@eurostat.datashop.lu">dslux@eurostat.datashop.lu</a> URL: <a href="http://www.datashop.org/">http://www.datashop.org/</a>	<b>STATISTICS NETHERLANDS</b> Eurostat Data Shop-Voorburg Postbus 4000 2270 JM VOORBURG Nederland Tel. (31-70) 337 49 00 Fax (31-70) 337 59 84 E-mail: <a href="mailto:datashop@cbs.nl">datashop@cbs.nl</a>	<b>Statistics Norway</b> Library and Information Centre Eurostat Data Shop Kongens gate 6 Boks 8131 Dep. N-0033 OSLO Tel. (47) 21 09 46 42/43 Fax (47) 21 09 45 04 E-mail: <a href="mailto:Datashop@ssb.no">Datashop@ssb.no</a> URL: <a href="http://www.ssb.no/bibliotek/datashop/">http://www.ssb.no/bibliotek/datashop/</a>	<b>Eurostat Data Shop Lisboa</b> INE/Serviço de Difusão Av. António José de Almeida, 2 P-1000-043 LISBOA Tel. (351-21) 842 61 00 Fax (351-21) 842 63 64 E-mail: <a href="mailto:data.shop@ine.pt">data.shop@ine.pt</a>	<b>Statistisches Amt des Kantons Zürich, Eurostat Data Shop</b> Bleicherweg 5 CH-8090 Zürich Tel. (41-1)225 12 12 Fax (41-1)225 12 99 E-mail: <a href="mailto:datashop@statistik.zh.ch">datashop@statistik.zh.ch</a> URL: <a href="http://www.statistik.zh.ch">http://www.statistik.zh.ch</a>
SUOMI/FINLAND	SVERIGE	UNITED KINGDOM	UNITED STATES OF AMERICA		
<b>STATISTICS FINLAND</b> Eurostat Data Shop Helsinki Tilastokirjasto PL 2B FIN-00022 Tilastokeskus Työpajakatu 13 B, 2 Kerros, Helsinki P. (358-9) 17 34 22 21 F. (358-9) 17 34 22 79 Sähköposti: <a href="mailto:datashop@stat.fi">datashop@stat.fi</a> URL: <a href="http://www.tilastokeskus.fi/tik/kk/datashop/">http://www.tilastokeskus.fi/tik/kk/datashop/</a>	<b>STATISTICS SWEDEN</b> Information service Eurostat Data Shop Karlavägen 100 - Box 24 300 S-104 51 STOCKHOLM Tfn (46-8) 50 69 48 01 Fax (46-8) 50 69 48 99 E-post: <a href="mailto:infoservice@scb.se">infoservice@scb.se</a> URL: <a href="http://www.scb.se/tjanster/datashop/d/datashop.asp">http://www.scb.se/tjanster/datashop/d/datashop.asp</a>	<b>Eurostat Data Shop</b> Office for National Statistics Room 1.015 Cardiff Road Newport South Wales NP10 8XG United Kingdom Tel. (44-1633) 81 33 69 Fax (44-1633) 81 33 33 E-mail: <a href="mailto:eurostat.datashop@ons.gov.uk">eurostat.datashop@ons.gov.uk</a>	<b>HAVER ANALYTICS</b> Eurostat Data Shop 60 East 42nd Street Suite 3310 NEW YORK, NY 10165 USA Tel. (1-212) 986 93 00 Fax (1-212) 986 69 81 E-mail: <a href="mailto:eurodata@haver.com">eurodata@haver.com</a> URL: <a href="http://www.haver.com/">http://www.haver.com/</a>		

### Media Support Eurostat (for professional journalists only):

Bech Building Office A4/017 • L-2920 Luxembourg • Tel. (352) 4301 33408 • Fax (352) 4301 35349 • e-mail: [eurostat-mediasupport@cec.eu.int](mailto:eurostat-mediasupport@cec.eu.int)

## For information on methodology

Franco Zampogna, Eurostat / F2, L-2920 Luxembourg, Tel. (352) 4301 37268, Fax (352) 4301 37318, E-mail: [franco.zampogna@cec.eu.int](mailto:franco.zampogna@cec.eu.int)

Alain Bisval, Eurostat / F2, L-2920 Luxembourg, Tel. (352) 4301 37023, Fax (352) 4301 37318, E-mail: [alain.bisval@cec.eu.int](mailto:alain.bisval@cec.eu.int)

ORIGINAL: English

Please visit our web site at [www.europa.eu.int/comm/eurostat/](http://www.europa.eu.int/comm/eurostat/) for further information!

A list of worldwide sales outlets is available at the **Office for Official Publications of the European Communities**.

2 rue Mercier – L-2985 Luxembourg  
Tel. (352) 2929 42118 Fax (352) 2929 42709  
URL: <http://publications.eu.int>  
E-mail: [info-info-opoce@cec.eu.int](mailto:info-info-opoce@cec.eu.int)

BELGIQUE/BELGIË – DANMARK – DEUTSCHLAND – GRECE/ELLADA – ESPAÑA – FRANCE – IRELAND – ITALIA – LUXEMBOURG – NEDERLAND – ÖSTERREICH  
PORTUGAL – SUOMI/FINLAND – SVERIGE – UNITED KINGDOM – ISLAND – NORGE – SCHWEIZ/SUISSE/SVIZZERA – BALGARJA – ČESKÁ REPUBLIKA – CYPRUS  
EESTI – HRVATSKA – MAGYARORSZÁG – MALTA – POLSKA – ROMÂNIA – RUSSIA – SLOVAKIA – SLOVENIA – TÜRKIYE – AUSTRALIA – CANADA – EGYPT – INDIA  
ISRAËL – JAPAN – MALAYSIA – PHILIPPINES – SOUTH KOREA – THAILAND – UNITED STATES OF AMERICA

## Order form

I would like to subscribe to Statistics in focus (from 1.1.2003 to 31.12.2003):

(for the Data Shop and sales office addresses see above)

All 9 themes (approximately 200 issues)

Paper: EUR 240

Language required:  DE  EN  FR

Statistics in focus can be downloaded (pdf file) free of charge from the Eurostat web site. You only need to register. For other solutions, contact your Data Shop.

Please send me a free copy of 'Eurostat mini-guide' (catalogue containing a selection of Eurostat products and services)

Language required:  DE  EN  FR

I would like a free subscription to 'Statistical References', the information letter on Eurostat products and services

Language required:  DE  EN  FR

Mr  Mrs  Ms

(Please use block capitals)

Surname: \_\_\_\_\_ Forename: \_\_\_\_\_

Company: \_\_\_\_\_ Department: \_\_\_\_\_

Function: \_\_\_\_\_

Address: \_\_\_\_\_

Post code: \_\_\_\_\_ Town: \_\_\_\_\_

Country: \_\_\_\_\_

Tel.: \_\_\_\_\_ Fax: \_\_\_\_\_

E-mail: \_\_\_\_\_

Payment on receipt of invoice, preferably by:

Bank transfer

Visa  Eurocard

Card No: \_\_\_\_\_ Expires on: \_\_\_\_/\_\_\_\_/\_\_\_\_

Please confirm your intra-Community VAT number:

If no number is entered, VAT will be automatically applied. Subsequent reimbursement will not be possible.