

# ELECTRICITY STATISTICS

*Marielle BASSAN*

## Statistics in focus

### ENVIRONMENT AND ENERGY

THEME 8 – 8/2001

### ENERGY

## Contents

PROVISIONAL DATA FOR 2000

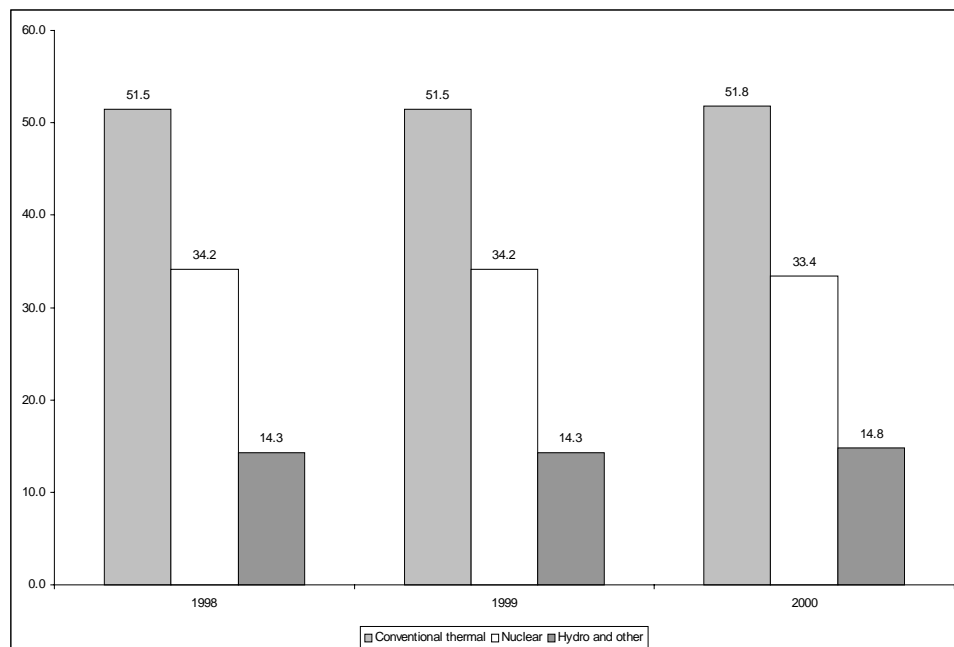


Figure 1: Contribution of the sources to the production in % for EU-15

Electricity production in the European Union increased between 1999 and 2000 by 1.7%. There were substantial increases in Luxembourg (+10%), Greece (+8.7%), Ireland (+8.6%), Austria (+5.1%), Italy (+3.8%), France (+3.3%) and the Netherlands (+3.2%), while production rose more moderately in the United-Kingdom, Portugal, Spain, Germany and Finland. There were fairly substantial decreases in production in Denmark (-7.3%), Sweden (-6.9%) and Belgium (-1.1%).

With regard to the structure of production in the European Union it can be seen that in 2000:

- conventional thermal power generation increased (+2.3%) and accounted for 51.8% of total production;
- electricity generation from nuclear power stations fell by 0.5% and represented 33.4% of total production;
- hydroelectric power generation increased (5.1%) and accounted for 14.8% of the total.

In 2000, total net imports for the European Union were 39.1TWh, representing 1.6% of production. France, Germany and Austria were net exporters, while Italy, the Netherlands, the United Kingdom, Finland and Luxembourg remained the largest net importers.

Electricity supplied in the European Union in 2000 amounted to 2448.6 TWh, an increase of 2.2% compared with 1999.

In 2000, Norway saw an increase of 17.5% in total production, which is almost entirely from hydroelectric power generation.



	EU-15	B	DK	D	EL	E	F	IRL	I	L	NL	A	P	FIN	S	UK	N																	
<b>Gesamt-Nettoerzeugung</b>	<b>Total net production</b>																	<b>Production totale nette</b>																
1998	2367.6	79.5	39.1	517.6	42.7	187.1	487.0	20.0	246.9	1.2	87.7	55.9	37.5	67.3	153.7	344.4	116.0																	
1999	2405.5	80.9	37.0	517.1	45.8	199.3	500.3	20.9	252.7	1.0	83.1	58.8	41.7	66.7	150.9	349.3	121.7																	
2000	2446.5	80.0	34.3	522.0	49.8	202.4	517.0	22.7	262.4	1.1	85.8	61.8	42.6	67.2	140.5	356.9	143.0																	
99/98	1.6%	1.8%	-5.4%	-0.1%	7.3%	6.5%	2.7%	4.5%	2.3%	-16.7%	-5.2%	5.2%	11.2%	-0.9%	-1.8%	1.4%	4.9%																	
00/99	1.7%	-1.1%	-7.3%	0.9%	8.7%	1.6%	3.3%	8.6%	3.8%	10.0%	3.2%	5.1%	2.2%	0.7%	-6.9%	2.2%	17.5%																	
<b>Davon :</b>	<b>Of which :</b>																	<b>Dont :</b>																
<b>Herkömmliche Wärmekraftwerke</b>	<b>Conventional thermal</b>																	<b>Thermique classique</b>																
1998	1220.4	34.1	36.4	339.0	38.8	93.6	52.7	18.7	195.3	0.2	83.1	17.6	24.5	31.5	9.4	245.5	0.7																	
1999	1239.0	32.7	33.8	327.7	40.8	114.9	48.7	19.6	196.4	0.2	78.6	17.5	34.0	32.0	9.5	252.6	0.8																	
2000	1267.0	32.9	30.0	329.0	45.2	110.7	50.0	20.7	207.2	0.2	81.0	18.3	30.8	31.2	8.8	271.0	0.7																	
99/98	1.5%	-4.1%	-7.1%	-3.3%	5.2%	22.8%	-7.6%	4.8%	0.6%	0.0%	-5.4%	-0.6%	38.8%	1.6%	1.1%	2.9%	14.3%																	
00/99	2.3%	0.6%	-11.2%	0.4%	10.8%	-3.7%	2.7%	5.6%	5.5%	0.0%	3.1%	4.6%	-9.4%	-2.5%	-7.4%	7.3%	-12.5%																	
<b>Kernenergie</b>	<b>Nuclear</b>																	<b>Nucléaire</b>																
1998	808.4	43.9		153.0		56.7	368.5				3.6			21.0	70.5	91.2																		
1999	822.5	46.7		160.8		56.5	374.9				3.6			22.1	70.2	87.7																		
2000	818.0	45.4		159.6		59.6	395.0				3.7			21.6	54.8	78.3																		
99/98	1.7%	6.4%		5.1%		-0.4%	1.7%				0.0%			5.2%	-0.4%	-3.8%																		
00/99	-0.5%	-2.8%		-0.7%		5.5%	5.4%				2.8%			-2.3%	-21.9%	-10.7%																		
<b>Wasserkraft &amp; Sonstige</b>	<b>Hydro and other</b>																	<b>Hydraulique &amp; autres</b>																
1998	338.8	1.5	2.7	25.6	3.9	36.8	65.8	1.3	51.6	1.0	1.0	38.3	13.0	14.8	73.8	7.7	115.3																	
1999	344.0	1.5	3.2	28.6	5.0	27.9	76.7	1.3	56.3	0.8	0.9	41.3	7.7	12.6	71.2	9.0	120.9																	
2000	361.5	1.7	4.3	33.4	4.6	32.1	72.0	2.0	55.2	0.9	1.1	43.5	11.8	14.4	76.9	7.6	142.3																	
99/98	1.5%	0.0%	18.5%	11.7%	28.2%	-24.2%	16.6%	0.0%	9.1%	-20.0%	-10.0%	7.8%	-40.8%	-14.9%	-3.5%	16.9%	4.9%																	
00/99	5.1%	13.3%	34.4%	16.8%	-8.0%	15.1%	-6.1%	53.8%	-2.0%	12.5%	22.2%	5.3%	53.2%	14.3%	8.0%	-15.6%	17.7%																	
<b>Einfuhren</b>	<b>Imports</b>																	<b>Importations</b>																
1998	167.8	7.8	2.7	38.3	2.5	9.0	4.6	0.2	41.6	6.3	12.2	10.3	4.0	9.6	6.1	12.6	8.0																	
1999	194.5	9.1	5.0	40.6	1.8	12.0	5.0	0.3	42.5	6.2	22.4	11.6	3.6	11.4	8.5	14.5	6.5																	
2000	218.8	11.7	8.3	43.9	1.7	12.3	3.3	0.2	44.8	6.4	22.9	13.8	4.7	12.2	18.3	14.3	1.5																	
99/98	15.9%	16.7%	85.2%	6.0%	-28.0%	33.3%	8.7%	50.0%	2.2%	-1.6%	83.6%	12.6%	-10.0%	18.8%	39.3%	15.1%	-18.8%																	
00/99	12.5%	28.6%	66.0%	8.1%	-5.6%	2.5%	-34.0%	-33.3%	5.4%	3.2%	2.2%	19.0%	30.6%	7.0%	115.3%	-1.4%	-76.9%																	
<b>Ausfuhren</b>	<b>Exports</b>																	<b>Exportations</b>																
1998	155.0	6.4	7.1	39.0	0.9	5.6	62.2	0.1	0.9	0.9	0.4	10.5	3.7	0.3	16.8	0.2	4.4																	
1999	170.9	8.2	7.3	39.6	1.6	6.2	68.1	0.1	0.5	0.7	4.0	13.5	4.5	0.2	16.1	0.3	8.3																	
2000	179.7	7.4	7.7	44.2	1.7	7.8	72.7	0.1	0.5	0.7	4.0	15.1	3.8	0.3	13.6	0.1	20.5																	
99/98	10.3%	28.1%	2.8%	1.5%	77.8%	10.7%	9.5%	0.0%	-44.4%	-22.2%		28.6%	21.6%	-33.3%	-4.2%	50.0%	88.6%																	
00/99	5.1%	-9.8%	5.5%	11.6%	6.2%	25.8%	6.8%	0.0%	0.0%	0.0%	0.0%	11.9%	-15.6%	50.0%	-15.5%	-66.7%	147.0%																	
<b>Energieverbrauch der Pumpspeicherwerke</b>	<b>Absorbed by pumping</b>																	<b>Energie absorbée pour le pompage</b>																
1998	29.5	1.4	0.0	5.4	0.2	2.6	5.6	0.4	8.4	1.2	0.0	1.6	0.1	0.0	0.0	2.6	0.8																	
1999	33.2	1.5	0.0	5.3	0.3	3.7	6.3	0.4	8.9	0.9	0.0	1.5	0.5	0.0	0.1	3.8	0.6																	
2000	37.0	1.6	0.0	6.7	0.6	4.9	6.6	0.4	9.1	1.0	0.0	2	0.6	0.0	0.0	3.5	0.9																	
99/98	12.5%	7.1%		-1.9%	50.0%	42.3%	12.5%	0.0%	6.0%	-25.0%		-6.3%				46.2%	-25.0%																	
00/99	11.4%	6.7%		26.4%	100.0%	32.4%	4.8%	0.0%	2.2%	11.1%		33.3%	20.0%			-7.9%	50.0%																	
<b>Erzeugte Energie</b>	<b>Energy supplied</b>																	<b>Energie appelée</b>																
1998	2350.9	79.5	34.7	511.5	44.1	187.9	423.8	19.7	279.2	5.4	99.5	54.1	37.7	76.6	143.0	354.2	118.8																	
1999	2395.9	80.3	34.7	512.8	45.7	201.4	430.9	20.7	285.8	5.6	101.5	55.4	40.3	77.9	143.2	359.7	119.3																	
2000	2448.6	82.7	34.9	515.0	49.2	202.0	441.0	22.4	297.6	5.8	104.7	58.5	42.9	79.1	145.2	367.6	123.1																	
99/98	1.9%	1.0%	0.0%	0.3%	3.6%	7.2%	1.7%	5.1%	2.4%	3.7%	2.0%	2.4%	6.9%	1.7%	0.1%	1.6%	0.4%																	
00/99	2.2%	3.0%	0.6%	0.4%	7.7%	0.3%	2.3%	8.2%	4.1%	3.6%	3.2%	5.6%	6.5%	1.5%	1.4%	2.2%	3.2%																	

Table 1: Electricity statistics (TWh)

Beitrag zur Elektrizitätserzeugung  
nach Herkunft in %

Contribution of the sources  
to the production in %

Contribution des sources  
à la production en %

	EU-15	B	DK	D	EL	E	F	IRL	I	L	NL	A	P	FIN	S	UK	N	
<b>Herkömmliche Wärmekraftwerke</b>	<b>Conventional thermal</b>																	<b>Thermique classique</b>
1998	51.5	42.9	93.1	65.5	90.9	50.0	10.8	93.5	79.1	16.7	94.8	31.5	65.3	46.8	6.1	71.3	0.6	
1999	51.5	40.4	91.4	63.4	89.1	57.7	9.7	93.8	77.7	20.0	94.6	29.8	81.5	48.0	6.3	72.3	0.7	
2000	51.8	41.1	87.5	63.0	90.8	54.7	9.7	91.2	79.0	18.2	94.4	29.6	72.3	46.4	6.3	75.9	0.5	
<b>Kernenergie</b>	<b>Nuclear</b>																	<b>Nucléaire</b>
1998	34.2	55.2	0.0	29.6	0.0	30.3	75.7	0.0	0.0	0.0	4.1	0.0	0.0	31.2	45.9	26.5	0.0	
1999	34.2	57.7	0.0	31.1	0.0	28.3	74.9	0.0	0.0	0.0	4.3	0.0	0.0	33.1	46.5	25.1	0.0	
2000	33.4	56.8	0.0	30.6	0.0	29.4	76.4	0.0	0.0	0.0	4.3	0.0	0.0	32.1	39.0	21.9	0.0	
<b>Wasserkraft &amp; Sonstige</b>	<b>Hydro and other</b>																	<b>Hydraulique et autres</b>
1998	14.3	1.9	6.9	4.9	9.1	19.7	13.5	6.5	20.9	83.3	1.1	68.5	34.7	22.0	48.0	2.2	99.4	
1999	14.3	1.9	8.6	5.5	10.9	14.0	15.3	6.2	22.3	80.0	1.1	70.2	18.5	18.9	47.2	2.6	99.3	
2000	14.8	2.1	12.5	6.4	9.2	15.9	13.9	8.8	21.0	81.8	1.3	70.4	27.7	21.4	54.7	2.1	99.5	

Contribution of the sources to the production in 2000

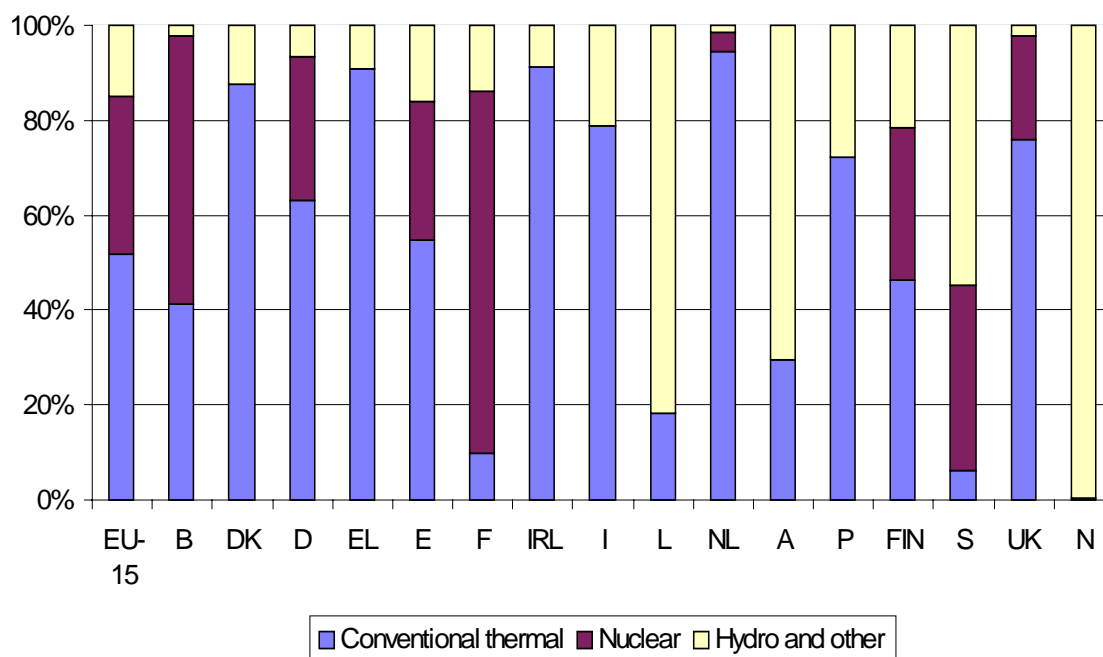


Table 3: Contribution of the sources to the production of electricity

# Further information:

## ➤ Databases

New Cronos, Domain 8

To obtain information or to order publications, databases and special sets of data, please contact the **Data Shop** network:

BELGIQUE/BELGIË	DANMARK	DEUTSCHLAND	ESPAÑA	FRANCE	ITALIA – Roma
<b>Eurostat Data Shop</b> <b>Bruxelles/Brussel</b> Rue du Commerce 124 Handelsstraat 124 B-1049 BRUXELLES / BRUSSEL Tel. (32-2) 234 67 50 Fax (32-2) 234 67 51 E-mail: datashop.brussels@cec.eu.int	<b>DANMARKS STATISTIK</b> <b>Bibliotek og Information</b> <b>Eurostat Data Shop</b> Sejrøgade 11 DK-2100 KØBENHAVN Ø Tlf. (45) 39 17 30 30 Fax (45) 39 17 30 03 E-mail: bib@dst.dk	<b>STATISTISCHES BUNDESAMT</b> <b>Eurostat Data Shop Berlin</b> Otto-Braun-Straße 70-72 (Eingang: Karl-Marx-Allee) D-10178 BERLIN Tel. (49) 1888-644 94 27/28 Fax (49) 1888-644 94 30 E-mail: datashop@statistik-bund.de	<b>INE Eurostat Data Shop</b> Paseo de la Castellana, 183 Oficina 009 Entrada por Estébanez Calderón E-28046 MADRID Tel. (34-91) 583 91 67 Fax (34-91) 579 71 20 E-mail: datashop.eurostat@ine.es	<b>INSEE Info Service</b> <b>Eurostat Data Shop</b> 195, rue de Bercy Tour Gamma A F-75582 PARIS CEDEX 12 Tel. (33-1) 53 17 88 44 Fax (33-1) 53 17 88 22 E-mail: datashop@insee.fr	<b>ISTAT</b> <b>Centro di Informazione Statistica</b> <b>Sede di Roma, Eurostat Data Shop</b> Via Cesare Balbo, 11a I-00184 ROMA Tel. (39) 06 46 73 31 02/06 Fax (39) 06 46 73 31 01/07 E-mail: dipdiff@istat.it
ITALIA – Milano	LUXEMBOURG	NEDERLAND	NORGE	PORTUGAL	SCHWEIZ/SUISSE/SVIZZERA
<b>ISTAT</b> <b>Ufficio Regionale per la Lombardia</b> <b>Eurostat Data Shop</b> Via Fieno 3 I-20123 MILANO Tel. (39) 02 80 61 32 460 Fax (39) 02 80 61 32 304 E-mail: mileuro@tin.it	<b>Eurostat Data Shop Luxembourg</b> BP 453 L-2014 LUXEMBOURG 4, rue A. Weicker L-2721 LUXEMBOURG Tel. (352) 43 35-2251 Fax (352) 43 35-22221 E-mail: dslux@eurostat.datashop.lu	<b>STATISTICS NETHERLANDS</b> <b>Eurostat Data Shop-Voorburg</b> Postbus 4000 2270 JM VOORBURG Nederland Tel. (31-70) 337 49 00 Fax (31-70) 337 59 84 E-mail: datashop@csb.nl	<b>Statistics Norway</b> <b>Library and Information Centre</b> <b>Eurostat Data Shop</b> Kongens gate 6 Boks. 81 31, Dep. N-0033 OSLO Tel. (47) 21 09 46 42/43 Fax (47) 21 09 45 04 E-mail: datashop@ssb.no	<b>Eurostat Data Shop Lisboa</b> <b>INE/Serviço de Difusão</b> Av. António José de Almeida, 2 P-1000-043 LISBOA Tel. (351) 21 842 61 00 Fax (351) 21 842 63 64 E-mail: data.shop@ine.pt	<b>Statistisches Amt des Kantons</b> <b>Zürich, Eurostat Data Shop</b> Bleicherweg 5 CH-8090 Zürich Tel. (41-1) 225 12 12 Fax (41-1) 225 12 99 E-mail: datasshop@statistik.zh.ch Internet: http://www.zh.ch/statistik
SUOMI/FINLAND	SVERIGE	UNITED KINGDOM	UNITED KINGDOM	UNITED STATES OF AMERICA	
<b>STATISTICS FINLAND</b> <b>Eurostat Data Shop Helsinki</b> <b>Tilastokirjasto</b> PL 2B FIN-00022 Tilastokeskus Työpajakatu 13 B, 2 Kerros, Helsinki P. (358-9) 17 34 22 21 F. (358-9) 17 34 22 79 Sähköposti: datashop.tilastokeskus@tilastokeskus.fi Internet: http://www.tilastokeskus.fi/tk/ kk/datashop.html	<b>STATISTICS SWEDEN</b> <b>Information service</b> <b>Eurostat Data Shop</b> Karlavägen 100 - Box 24 300 S-104 51 STOCKHOLM Tfn. (46-8) 50 69 48 01 Fax (46-8) 50 69 48 99 E-post: info@scb.se Internet: http://www.scb.se/info/ datashop/e/udatasshop.asp	<b>Eurostat Data Shop</b> <b>Enquiries &amp; advice and publications</b> <b>Office for National Statistics</b> Customers & Electronic Services Unit 1 Drummond Gate - B1/05 LONDON SW1V 2QQ Tel. (44-20) 75 33 56 76 Fax (44-1633) 81 27 62 E-mail: eurostat.datashop@ns.gov.uk	<b>Eurostat Data Shop</b> <b>Electronic Data Extractions,</b> <b>Enquiries &amp; advice - R.CADE</b> Unit 1L Mounjoey Research Centre University of Durham DURHAM DH1 3SW Tel: (44-191) 374 73 50 Fax: (44-191) 384 49 71 E-mail: r-cade@dur.ac.uk URL: http://www.rcade.dur.ac.uk	<b>HAVER ANALYTICS</b> <b>Eurostat Data Shop</b> 60 East 42nd Street Suite 3310 NEW YORK, NY 10165 Tel. (1-212) 986 93 00 Fax (1-212) 986 69 81 E-mail: eurodata@haver.com	

Media Support Eurostat (for professional journalists only):

Bech Building Office A3/48 - L-2920 Luxembourg - Tel. (352) 4301 33408 - Fax (352) 4301 32649 - e-mail: eurostat-mediasupport@cec.eu.int

## For information on methodology:

Marielle Bassan, Eurostat/F4, L-2920 Luxembourg, Tel. (352) 4301 32040, Fax (352) 4301 32839, E-mail: Marielle.Bassan@cec.eu.int  
 ORIGINAL: English

Please visit our web site at [www.europa.eu.int/comm/eurostat/](http://www.europa.eu.int/comm/eurostat/) for further information!

A list of worldwide sales outlets is available at the **Office for Official Publications of the European Communities**.

2 rue Mercier - L-2985 Luxembourg  
 Tel. (352) 2929 42118 Fax (352) 2929 42709  
 Internet Address <http://eur-op.eu.int/fr/generals-ad.htm>  
 e-mail: info.info@cec.eu.int

BELGIQUE/BELGIË - DANMARK - DEUTSCHLAND - GREECE/ELLADA - ESPAÑA - FRANCE - IRELAND - ITALIA - LUXEMBOURG - NEDERLAND - ÖSTERREICH  
 PORTUGAL - SUOMI/FINLAND - SVERIGE - UNITED KINGDOM - ISLAND - NORGE - SCHWEIZ/SUISSE/SVIZZERA - BALGARIJA - CESHÁ REPUBLIKA - CYPRUS  
 EESTI - HRVATSKA - MAGYARORSZÁG - MALTA - POLSKA - ROMÂNIA - RUSSIA - SLOVAKIA - SLOVENIA - TÜRKIYE - AUSTRALIA - CANADA - EGYPT - INDIA  
 ISRAËL - JAPAN - MALAYSIA - PHILIPPINES - SOUTH KOREA - THAILAND - UNITED STATES OF AMERICA

## Order form

I would like to subscribe to Statistics in focus (from 1.1.2001 to 31.12.2001):  
 (for the Data Shop and sales office addresses see above)

**Formula 1:** All 9 themes (approximately 140 issues)

Paper: EUR 360

Language required:  DE  EN  FR

**Formula 2:** One or more of the following seven themes:

Theme 1 'General statistics'

Paper: EUR 42

Theme 2 'Economy and finance'

Theme 3 'Population and social conditions'

Theme 4 'Industry, trade and services'

Theme 5 'Agriculture and fisheries'

Theme 6 'External trade'

Theme 8 'Environment and energy'

Paper: EUR 84

Language required:  DE  EN  FR

Statistics in focus can be downloaded (pdf file) free of charge from the Eurostat web site. You only need to register. For other solutions, contact your Data Shop.

Please send me a free copy of 'Eurostat mini-guide' (catalogue containing a selection of Eurostat products and services)  
 Language required:  DE  EN  FR

I would like a free subscription to 'Statistical References', the information letter on Eurostat products and services  
 Language required:  DE  EN  FR

Mr  Mrs  Ms

(Please use block capitals)

Surname: \_\_\_\_\_ Forename: \_\_\_\_\_

Company: \_\_\_\_\_ Department: \_\_\_\_\_

Function: \_\_\_\_\_

Address: \_\_\_\_\_

Post code: \_\_\_\_\_ Town: \_\_\_\_\_

Country: \_\_\_\_\_

Tel.: \_\_\_\_\_ Fax: \_\_\_\_\_

E-mail: \_\_\_\_\_

### Payment on receipt of invoice, preferably by:

Bank transfer

Visa  Eurocard

Card No: \_\_\_\_\_ Expires on: \_\_\_\_/\_\_\_\_/\_\_\_\_

### Please confirm your intra-Community VAT number:

If no number is entered, VAT will be automatically applied. Subsequent reimbursement will not be possible.