

# Pig population survey in December 2000 and production forecasts for 2001<sup>1</sup>

*Francis Weiler, Robert Poschacher*

On the basis of the market forecasts submitted by the Member States, pig production will fall by 0.5 % in 2001 to give a total of 202.8 million animals. Even so, pigmeat production remains at a fairly high level by comparison with previous years. Thus, the 2001 forecast is almost 7 % above the 1997 figure. An examination of pig stock trends confirms this picture: although the total EU-15 pig population fell by approximately 1.1 % in December 2000 compared with 1999, this was still above the 1997 level (+3.3 %).

## Despite falling, pig production remains at a high level.

Figure 1 shows the Gross Indigenous Production (GIP) of pigs from Q1 1997 to Q4 2001. Thus, production was almost 25% higher in Q4 1998 than in Q2 1997. Overall, pigmeat production is always highest in the last quarter. An examination of GIP trends in the Member States (see Table) shows that IRL, NL and UK<sup>2</sup>, in particular, are reducing production. The five biggest pigmeat producers (EU-15) are Denmark, Germany, Spain, France and the Netherlands, which together account for more than 73 % of total Community output.

## Declining trend in EU pig stocks

Although the pig population surveys conducted in the Member States in December 2000 reveal a slight decline compared with 1999 (-1.1 %), the overall level remains high (122.9 million animals). The biggest falls were recorded in A, FIN, S and UK, whilst the total pig population rose by approximately 6.1% in Denmark. The category breakdown shows a disproportionately high reduction in boar stocks.

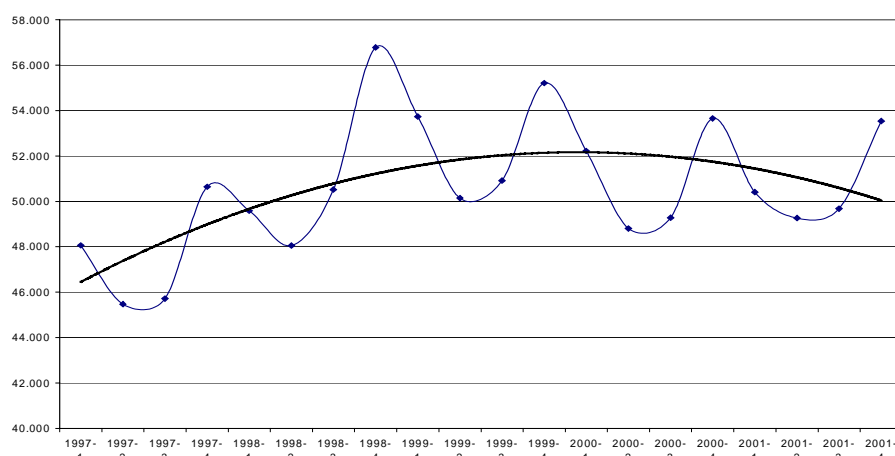


Figure 1: EU-15 Gross Indigenous Production: Q1 1997–Q4 2001 (in 1.000 head)

<sup>1</sup> The data do not include the impact of the Foot and Mouth Disease.

<sup>2</sup> Abbreviations used for Member States: B = Belgium, DK = Denmark, D = Germany, EL = Greece, E = Spain, F = France, IRL = Ireland, I = Italy, L = Luxembourg, NL = Netherlands, A = Austria, P = Portugal, FIN = Finland, S = Sweden, UK = United Kingdom

## Statistics in focus

### AGRICULTURE AND FISHERIES

THEME 5 – 11/2001

### AGRICULTURE

## Contents

Despite falling, pig production remains at a high level..... 1

Declining trend in EU pig stocks ..... 1



DECEMBER  
1000 STÜCK

DECEMBER  
1000 HEAD

DECEMBER  
1000 TETES

|                                     | DECEMBER 1000 HEAD                    |       |        |        |        |        |        |       |       |       | DECEMBER 1000 TETES                      |       |       |       |       |       |        |  |  |  |
|-------------------------------------|---------------------------------------|-------|--------|--------|--------|--------|--------|-------|-------|-------|--|-------|-------|-------|-------|-------|--------|--|--|--|
|                                     | EU-15                                 | B     | DK     | D      | GR     | E      | F      | IRL   | I     | L     | NL                                       | A     | P     | FIN   | S     | UK    | TOTAL  |  |  |  |
| <b>1 INSGESAMT</b>                  | <b>TOTAL</b>                          |       |        |        |        |        |        |       |       |       | <b>TOTAL</b>                             |       |       |       |       |       |        |  |  |  |
| 1998                                | 125.385                               | 7.551 | 11.991 | 26.294 | 933    | 21.562 | 15.863 | 1.801 | 8.323 | 81    | 13.418                                   | 3.810 | 2.341 | 1.541 | 2.321 | 7.554 | 1998   |  |  |  |
| 1999                                | 124.277                               | 7.322 | 11.914 | 26.003 | 906    | 22.418 | 15.993 | 1.763 | 8.403 | 82    | 13.139                                   | 3.433 | 2.350 | 1.493 | 2.021 | 7.037 | 1999   |  |  |  |
| 2000                                | 122.886 e                             | 7.266 | 12.642 | 25.775 | 896 e  | 22.435 | 15.921 | 1.731 | 8.329 | 83    | 12.822                                   | 3.348 | 2.338 | 1.456 | 1.896 | 5.948 | 2000   |  |  |  |
| %98/97                              | 5,4                                   | 2,7   | 4,3    | 6,0    | -0,5   | 10,7   | 2,5    | 4,9   | 0,5   | 9,8   | 17,3                                     | 3,5   | -1,0  | 6,7   | -1,3  | -6,0  | %98/97 |  |  |  |
| %99/98                              | -0,9                                  | -3,0  | -0,6   | -1,1   | -2,9   | 4,0    | 0,8    | -2,1  | 1,0   | 1,5   | -2,1                                     | -9,9  | 0,4   | -3,1  | -12,9 | -6,8  | %99/98 |  |  |  |
| %00/99                              | -1,1 e                                | -0,8  | 6,1    | -0,9   | -1,1 e | 0,1    | -0,5   | -1,8  | -0,9  | 0,6   | -2,4                                     | -2,5  | -0,5  | -2,5  | -6,2  | -15,5 | %00/99 |  |  |  |
| <b>1.1 FERKEL (&lt;20 KG)</b>       | <b>PIGLET (&lt;20 KG)</b>             |       |        |        |        |        |        |       |       |       | <b>PORCELETS (&lt;20 KG) 1.1</b>         |       |       |       |       |       |        |  |  |  |
| 1998                                | 34.223                                | 2.075 | 3.667  | 6.574  | 267    | 5.922  | 3.817  | 469   | 1.520 | 25    | 5.158                                    | 967   | 656   | 437   | 693   | 1.976 | 1998   |  |  |  |
| 1999                                | 33.222                                | 1.979 | 3.706  | 6.519  | 230    | 5.702  | 3.800  | 486   | 1.467 | 31    | 4.791                                    | 863   | 682   | 420   | 588   | 1.950 | 1999   |  |  |  |
| 2000                                | 33.396 e                              | 2.013 | 4.001  | 6.468  | 231 e  | 5.914  | 3.802  | 482   | 1.437 | 27    | 4.935                                    | 853   | 679   | 420   | 564   | 1.569 | 2000   |  |  |  |
| %98/97                              | 7,2                                   | 3,4   | 1,5    | 6,9    | -2,2   | 11,4   | 3,3    | 3,6   | 1,6   | -3,1  | 28,4                                     | 1,6   | -1,9  | 4,5   | -3,4  | -7,5  | %98/97 |  |  |  |
| %99/98                              | -2,9                                  | -4,6  | 1,1    | -0,8   | -13,9  | -3,7   | -0,4   | 3,5   | -3,5  | 24,5  | -7,1                                     | -10,8 | 4,0   | -4,1  | -13,8 | -1,3  | %99/98 |  |  |  |
| %00/99                              | 0,5 e                                 | 1,7   | 8,0    | -0,8   | 0,4 e  | 3,7    | 0,1    | -0,8  | -2,0  | 3,0   | -1,1                                     | -1,1  | -0,4  | 0,0   | -5,6  | -19,5 | %00/99 |  |  |  |
| <b>1.3 MASTSCHWEINE (&gt;50 KG)</b> | <b>PIGS FOR FATTENING (&gt;50 KG)</b> |       |        |        |        |        |        |       |       |       | <b>PORCS A L'ENGRAIS (&gt;50 KG) 1.3</b> |       |       |       |       |       |        |  |  |  |
| 1998                                | 46.949                                | 2.859 | 3.603  | 10.083 | 325    | 8.433  | 5.884  | 603   | 4.393 | 26    | 4.588                                    | 1.375 | 704   | 543   | 809   | 2.720 | 1998   |  |  |  |
| 1999                                | 47.367                                | 2.832 | 3.504  | 10.155 | 336    | 9.225  | 5.972  | 4.501 | 4.501 | 27    | 4.668                                    | 1.251 | 721   | 531   | 705   | 2.372 | 1999   |  |  |  |
| 2000                                | 46.946 e                              | 2.834 | 3.713  | 10.140 | 333 e  | 9.087  | 5.949  | 5.51  | 4.518 | 26    | 4.560                                    | 1.212 | 718   | 526   | 686   | 2.093 | 2000   |  |  |  |
| %96/95                              | 1                                     | -2    | 3      | 2      | 2      | 1      | 4      | 8     | 0     | 22    | -1                                       | -4    | -5    | -2    | -3    | 4     |        |  |  |  |
| %97/96                              | 0                                     | 4     | 12     | 1      | 13     | -2     | 2      | 4     | 2     | -14   | -21                                      | 1     | 1     | 4     | 14    | 3     |        |  |  |  |
| %98/97                              | 6,5                                   | 2,3   | 6,9    | 7,7    | -0,3   | 13,4   | 1,7    | 10,8  | -0,8  | 15,8  | 17,3                                     | 8,4   | -0,1  | 4,3   | 2,6   | -3,2  | %98/97 |  |  |  |
| %99/98                              | 0,9                                   | -0,9  | -2,7   | 0,7    | 3,4    | 9,4    | 1,5    | -6,1  | 2,5   | 3,3   | 1,7                                      | -9,0  | 2,4   | -2,2  | -12,9 | -12,8 | %99/98 |  |  |  |
| %00/99                              | -0,9 e                                | 0,0   | 6,0    | -0,1   | -0,9 e | -1,5   | -0,4   | -2,7  | 0,4   | -2,8  | -2,3                                     | -3,1  | -0,4  | -0,8  | -2,7  | -11,8 | %00/99 |  |  |  |
| <b>1.4 ZUCHTSCHWEINE &gt;= 50kg</b> | <b>BREEDINGS PIGS &gt;= 50kg</b>      |       |        |        |        |        |        |       |       |       | <b>REPRODUCTEURS &gt;= 50 kg 1.4</b>     |       |       |       |       |       |        |  |  |  |
| 1998                                | 13.435                                | 769   | 1.298  | 2.730  | 131    | 2.598  | 1.563  | 192   | 745   | 10    | 1.390                                    | 386   | 347   | 199   | 243   | 833   | 1998   |  |  |  |
| 1999                                | 12.971                                | 733   | 1.289  | 2.646  | 127    | 2.514  | 1.506  | 190   | 739   | 9     | 1.338                                    | 344   | 347   | 192   | 211   | 785   | 1999   |  |  |  |
| 2000                                | 12.858 e                              | 728   | 1.377  | 2.586  | 126 e  | 2.563  | 1.494  | 189   | 746   | 8     | 1.285                                    | 334   | 344   | 188   | 210   | 681   | 2000   |  |  |  |
| %98/97                              | 0,6                                   | -0,1  | 4,0    | 1,7    | -7,7   | 9,0    | -0,2   | -2,6  | 2,5   | 1,2   | -4,1                                     | -2,9  | -2,8  | 4,6   | -9,2  | -12,9 | %98/97 |  |  |  |
| %99/98                              | -3,5                                  | -4,7  | -0,7   | -3,1   | -3,1   | -3,2   | -3,6   | -3,1  | -0,8  | -10,3 | -3,7                                     | -11,0 | 0,0   | -3,4  | -13,4 | -5,7  | %99/98 |  |  |  |
| %00/99                              | -0,9 e                                | -0,8  | 6,8    | -2,3   | -0,8 e | 1,9    | -0,8   | -0,9  | 0,9   | -9,1  | -4,0                                     | -2,8  | -0,9  | -2,3  | -0,6  | -13,3 | %00/99 |  |  |  |
| <b>1.4.1 EBER</b>                   | <b>BOARS</b>                          |       |        |        |        |        |        |       |       |       | <b>VERRATS 1.4.1</b>                     |       |       |       |       |       |        |  |  |  |
| 1998                                | 414                                   | 15    | 35     | 74     | 8      | 92     | 45     | 5     | 37    | 1     | 22                                       | 12    | 22    | 7     | 5     | 36    | 1998   |  |  |  |
| 1999                                | 375                                   | 14    | 33     | 64     | 7      | 84     | 39     | 4     | 35    | 0     | 18                                       | 11    | 20    | 7     | 5     | 35    | 1999   |  |  |  |
| 2000                                | 357 e                                 | 13    | 33     | 59     | 7 e    | 85     | 36     | 4     | 38    | 0     | 13                                       | 10    | 20    | 6     | 4     | 28    | 2000   |  |  |  |
| %98/97                              | -6,0                                  | -9,0  | -2,8   | 3,3    | -11,1  | -9,8   | -2,8   | -10,6 | 5,7   | -11,1 | -21,4                                    | -2,9  | -4,3  | 6,5   | -11,7 | -17,6 | %98/97 |  |  |  |
| %99/98                              | -9,6                                  | -7,4  | -5,7   | -13,7  | -12,5  | -8,7   | -12,9  | -10,4 | -5,4  | -52,1 | -18,2                                    | -9,8  | -9,1  | 1,5   | -15,1 | -3,2  | %99/98 |  |  |  |
| %00/99                              | -4,7 e                                | -6,5  | 0,0    | -7,6   | 0,0 e  | 1,2    | -6,7   | -4,3  | 8,6   | 24,6  | -27,8                                    | -7,5  | 0,0   | -4,5  | -8,9  | -19,1 | %00/99 |  |  |  |
| <b>1.4.2 ZUCHTSAUEN</b>             | <b>BREEDING SOWS</b>                  |       |        |        |        |        |        |       |       |       | <b>TRUIES D'ELEVAGE 1.4.2</b>            |       |       |       |       |       |        |  |  |  |
| 1998                                | 13.020                                | 755   | 1.263  | 2.656  | 123    | 2.506  | 1.518  | 188   | 708   | 10    | 1.368                                    | 374   | 325   | 192   | 238   | 797   | 1998   |  |  |  |
| 1999                                | 12.596                                | 720   | 1.256  | 2.582  | 120    | 2.430  | 1.467  | 186   | 704   | 9     | 1.320                                    | 333   | 327   | 186   | 206   | 750   | 1999   |  |  |  |
| 2000                                | 12.501 e                              | 715   | 1.344  | 2.527  | 119 e  | 2.478  | 1.457  | 185   | 708   | 8     | 1.272                                    | 324   | 324   | 181   | 206   | 653   | 2000   |  |  |  |
| %98/97                              | 0,9                                   | 0,0   | 4,2    | 1,6    | -7,5   | 9,9    | -0,1   | -2,4  | 2,3   | 2,0   | -3,8                                     | -2,9  | -2,7  | 4,6   | -9,1  | -12,7 | %98/97 |  |  |  |
| %99/98                              | -3,3                                  | -4,6  | -0,6   | -2,8   | -2,4   | -3,0   | -3,3   | -0,8  | -0,6  | -7,7  | -3,5                                     | -11,0 | 0,6   | -3,5  | -13,4 | -5,8  | %99/98 |  |  |  |
| %00/99                              | -0,8 e                                | -0,6  | 7,0    | -2,1   | -0,8 e | 2,0    | -0,7   | -0,8  | 0,6   | -10,2 | -3,6                                     | -2,6  | -0,9  | -2,2  | -0,4  | -13,0 | %00/99 |  |  |  |
| <b>1.4.2.1 GEDECKTE SAUEN</b>       | <b>MATED SOWS</b>                     |       |        |        |        |        |        |       |       |       | <b>TRUIES SALLIES 1.4.2.1</b>            |       |       |       |       |       |        |  |  |  |
| 1998                                | 8.775                                 | 559   | 810    | 1.804  | 71     | 1.630  | 1.047  | 133   | 558   | 7     | 862                                      | 241   | 199   | 137   | 161   | 556   | 1998   |  |  |  |
| 1999                                | 8.588                                 | 543   | 808    | 1.768  | 71     | 1.585  | 1.031  | 132   | 553   | 7     | 866                                      | 222   | 200   | 134   | 145   | 523   | 1999   |  |  |  |
| 2000                                | 8.580 e                               | 546   | 861    | 1.749  | 71 e   | 1.636  | 1.030  | 133   | 557   | 6     | 834                                      | 222   | 198   | 133   | 142   | 461   | 2000   |  |  |  |
| %98/97                              | 0,9                                   | 0,7   | 3,6    | 0,9    | -4,1   | 7,8    | 0,2    | -3,8  | 2,4   | 0,0   | 1,7                                      | -4,0  | -2,9  | 5,3   | -10,3 | -12,3 | %98/97 |  |  |  |
| %99/98                              | -2,1                                  | -2,9  | -0,2   | -2,0   | 0,0    | -2,8   | -1,5   | -0,8  | -0,9  | -8,7  | 0,5                                      | -7,7  | 0,5   | -2,2  | -9,9  | -5,9  | %99/98 |  |  |  |
| %00/99                              | -0,1 e                                | 0,7   | 6,6    | -1,1   | 0,0 e  | 3,2    | -0,1   | 0,7   | 0,7   | -9,6  | -3,7                                     | -0,1  | -1,0  | -0,9  | -11,9 | -11,9 | %00/99 |  |  |  |

: nicht verfügbar  
p. vorläufige Angabe  
e Eurostat Schätzung

: unavailable  
p. provisional data  
e estimated by Eurostat

: données non disponibles  
p. données provisoires  
e. estimé par Eurostat

**BRUTTOEIGENERZEUGUNG VON SCHWEINEN GROSS INDIGENOUS PRODUCTION OF PIGS PRODUCTION INDIGENE BRUTE DE PORCINS**

|        | 1000 STÜCK                |          |          |          |         |                           |          |         |          |       | 1000 HEAD                 |         |         |         |         | 1000 TETES |        |  |  |  |
|--------|---------------------------|----------|----------|----------|---------|---------------------------|----------|---------|----------|-------|---------------------------|---------|---------|---------|---------|------------|--------|--|--|--|
|        | EU-15                     | B        | DK       | D        | EL      | E                         | F        | IRL     | I        | L     | NL                        | A       | P       | FIN     | S       | UK         |        |  |  |  |
| JAHR   | YEAR                      |          |          |          |         |                           |          |         |          |       |                           |         |         |         |         |            | ANNEE  |  |  |  |
| 1999   | 210.010 p                 | 10.917 p | 22.873 p | 41.880 p | 2.180 p | 35.188 p                  | 27.059 p | 3.548 p | 11.855 p | 147 p | 23.479 p                  | 5.234   | 4.965 p | 2.174   | 3.798 p | 14.714 p   | 1999   |  |  |  |
| 2000   | 203.966 f                 | 11.226 p | 22.414 p | 40.696 p | 2.197 f | 35.128 p                  | 26.648 p | 3.274 p | 11.895 p | 137 p | 22.654 p                  | 5.063 p | 4.930 p | 2.052 p | 3.250 p | 12.403 p   | 2000   |  |  |  |
| 2001   | 202.888 e                 | 11.167 e | 23.309 p | 40.350 p | 2.185 e | 36.279 p                  | 26.669 p | 3.166 p | 11.860 p | 137 f | 21.550 p                  | 5.036 e | 4.935 p | 2.041 p | 3.160 p | 11.044 p   | 2001   |  |  |  |
| %01/00 | -0,5 e                    | -0,5 e   | 4,0 p    | -0,9 p   | 3,3 p   | 3,3 p                     | 0,1 p    | -3,3 p  | -0,3 p   | 0,0 f | -4,9 p                    | -0,5 e  | 0,1 p   | -0,5 p  | -2,8 p  | -11,0 p    | %01/00 |  |  |  |
|        | JANUAR/FEBRUAR/MÄRZ       |          |          |          |         | JANUARY/FEBRUARY/MARCH    |          |         |          |       | JANVIER/FEVRIER/MARS      |         |         |         |         |            |        |  |  |  |
| 1999   | 53.735 p                  | 2.929 p  | 5.997 p  | 10.559   | 537 p   | 8.798                     | 6.935    | 926     | 3.114    | 37 p  | 5.912 p                   | 1.385   | 1.170   | 540     | 992 p   | 3.904      | 1999   |  |  |  |
| 2000   | 52.225 p                  | 2.901 p  | 5.714 p  | 10.086 p | 526 p   | 8.852 p                   | 6.944 p  | 873 p   | 3.176 p  | 34 p  | 5.893 p                   | 1.300 p | 1.189 p | 522 p   | 814 p   | 3.401 p    | 2000   |  |  |  |
| 2001   | 50.408 p                  | 2.827 p  | 5.913 p  | 10.050 p | 536 p   | 8.934 p                   | 6.902 p  | 796 p   | 3.200 p  | 34 p  | 5.000 p                   | 1.255 p | 1.189 p | 514 p   | 740 p   | 2.518 p    | 2001   |  |  |  |
| %01/00 | -3,5 p                    | -2,6 p   | 3,5 p    | -0,4 p   | 2,0 p   | 0,9 p                     | -0,6 p   | -8,8 p  | 0,8 p    | 0,0 p | -15,2 p                   | -3,5 p  | 0,0 p   | -1,5 p  | -9,1 p  | -26,0 p    | %01/00 |  |  |  |
|        | APRIL/MAI/JUNI            |          |          |          |         | APRIL/MAY/JUNE            |          |         |          |       | AVRIL/MAI/JUIN            |         |         |         |         |            |        |  |  |  |
| 1999   | 50.146 p                  | 2.276 p  | 5.516 p  | 10.323 p | 454 p   | 8.074 p                   | 6.600 p  | 861     | 2.766    | 37 p  | 5.663 p                   | 1.310   | 1.223   | 536     | 955 p   | 3.552      | 1999   |  |  |  |
| 2000   | 48.808 p                  | 2.708 p  | 5.291 p  | 9.930 p  | 452 p   | 8.113 p                   | 6.367 p  | 801 p   | 2.844 p  | 34 p  | 5.460 p                   | 1.249 p | 1.209 p | 492 p   | 800 p   | 3.057 p    | 2000   |  |  |  |
| 2001   | 49.265 f                  | 2.858 p  | 5.624 p  | 9.900 p  | 468 p   | 8.280 p                   | 6.402 p  | 745 p   | 2.830 p  | 34 f  | 5.800 p                   | 1.250 p | 1.210 p | 483 p   | 763 p   | 2.618 p    | 2001   |  |  |  |
| %01/00 | 0,9 f                     | 5,5 p    | 6,3 p    | -0,3 p   | 3,6 p   | 2,1 p                     | 0,5 p    | -7,0 p  | -0,5 p   | 0,0 f | 6,2 p                     | 0,0 p   | 0,1 p   | -1,9 p  | -4,6 p  | -14,4 p    | %01/00 |  |  |  |
|        | JULI/AUGUST/SEPTEMBER     |          |          |          |         | JULI/AUGUST/SEPTEMBER     |          |         |          |       | JUILLET/AOUT/SEPTEMBRE    |         |         |         |         |            |        |  |  |  |
| 1999   | 50.917 p                  | 2.831 p  | 5.573 p  | 10.127 p | 500 p   | 8.324 p                   | 6.774 p  | 883 p   | 2.611 p  | 37 p  | 5.681 p                   | 1.235   | 1.281 p | 523     | 929 p   | 3.607 p    | 1999   |  |  |  |
| 2000   | 49.280 p                  | 2.755 p  | 5.621 p  | 9.930 p  | 513 p   | 8.183 p                   | 6.587 p  | 818 p   | 2.545 p  | 34 p  | 5.521 p                   | 1.222 p | 1.242 p | 503 p   | 788 p   | 3.018 p    | 2000   |  |  |  |
| 2001   | 49.680 f                  | 2.889 p  | 5.729 p  | 9.900 p  | 522 p   | 8.698 p                   | 6.601 p  | 850 p   | 2.530 p  | 34 f  | 5.300 p                   | 1.230 p | 1.244 p | 505 p   | 788 p   | 2.859 p    | 2001   |  |  |  |
| %01/00 | 0,8 f                     | 4,9 p    | 1,9 p    | -0,3 p   | 1,8 p   | 6,3 p                     | 0,2 p    | 3,9 p   | -0,6 p   | 0,0 f | -4,0 p                    | 0,7 p   | 0,2 p   | 0,4 p   | 0,0 p   | -5,3 p     | %01/00 |  |  |  |
|        | OKTOBER/NOVEMBER/DEZEMBER |          |          |          |         | OKTOBER/NOVEMBER/DECEMBER |          |         |          |       | OCTOBRE/NOVEMBRE/DECEMBRE |         |         |         |         |            |        |  |  |  |
| 1999   | 55.213 p                  | 2.881 p  | 5.787 p  | 10.871   | 689 p   | 9.992 p                   | 6.750 p  | 877 p   | 3.364 p  | 37 p  | 6.223 p                   | 1.304   | 1.291 p | 574     | 922 p   | 3.651 p    | 1999   |  |  |  |
| 2000   | 53.653 f                  | 2.862 p  | 5.788 p  | 10.750 p | 706 f   | 9.980 p                   | 6.750 p  | 781 p   | 3.330 p  | 34 p  | 5.780 p                   | 1.291 p | 1.290 p | 535 p   | 848 p   | 2.927 p    | 2000   |  |  |  |
| 2001   | 53.536 e                  | 2.593 e  | 6.043 p  | 10.500 p | 659 e   | 10.367 p                  | 6.764 p  | 775 p   | 3.300 p  | 34 f  | 5.450 p                   | 1.301 e | 1.292 p | 540 p   | 869 p   | 3.049 p    | 2001   |  |  |  |
| %01/00 | -0,2 e                    | -9,4 e   | 4,4 p    | -2,3 p   | -6,7 e  | 3,9 p                     | 0,2 p    | -0,8 p  | -0,9 p   | 0,0 f | -5,7 p                    | 0,7 e   | 0,2 p   | 0,9 p   | 2,5 p   | 4,2 p      | %01/00 |  |  |  |

: nicht verfügbar  
 p vorläufige Angabe  
 e Eurostat Schätzung  
 f Vorausschätzung

: unavailable  
 p provisional data  
 e estimated by Eurostat  
 f forecast

: donnée non disponible  
 p donnée provisoire  
 e: estimé par Eurostat  
 f prévisions

# Further information:

## ➤ Databases

New Cronos  
Domain ZPA 1

To obtain information or to order publications, databases and special sets of data, please contact the **Data Shop** network:

| BELGIQUE/BELGIË  | DANMARK   | DEUTSCHLAND  | ESPAÑA  | FRANCE  | ITALIA – Roma   |
|--|---|--|---|---|---|
| <b>Eurostat Data Shop</b><br>Bruxelles/Brussel<br>Rue du Commerce 124<br>Handelsstraat 124<br>B-1049 BRUXELLES / BRUSSEL<br>Tel. (32-2) 234 67 50<br>Fax (32-2) 234 67 51<br>E-mail: datashop.brussels@cec.eu.int  | <b>DANMARKS STATISTIK</b><br>Bibliotek og Information<br><b>Eurostat Data Shop</b><br>Sejrogade 11<br>DK-2100 KØBENHAVN Ø<br>Tlf. (45) 39 17 30 30<br>Fax (45) 39 17 30 03<br>E-mail: bib@dst.dk  | <b>STATISTISCHES BUNDESAMT</b><br><b>Eurostat Data Shop Berlin</b><br>Otto-Braun-Straße 70-72<br>(Eingang: Karl-Marx-Allee)<br>D-10178 BERLIN<br>Tel. (49) 1888-644 94 27/28<br>Fax (49) 1888-644 94 30<br>E-mail: datashop@statistik-bund.de  | <b>INE Eurostat Data Shop</b><br>Paseo de la Castellana, 183<br>Oficina 009<br>Entrada por Estébanez Calderón<br>E-28046 MADRID<br>Tel. (34-91) 583 91 67<br>Fax (34-91) 579 71 20<br>E-mail: datashop.eurostat@ine.es  | <b>INSEE Info Service</b><br><b>Eurostat Data Shop</b><br>195, rue de Bercy<br>Tour Gamma A<br>F-75582 PARIS CEDEX 12<br>Tel. (33-1) 53 17 8844<br>Fax (33-1) 53 17 8822<br>E-mail: datashop@insee.fr     | <b>ISTAT</b><br><b>Centro di Informazione Statistica</b><br><b>Sede di Roma, Eurostat Data Shop</b><br>Via Cesare Balbo, 11a<br>I-00184 ROMA<br>Tel. (39) 06 46 73 31 02/06<br>Fax (39) 06 46 73 31 01/07<br>E-mail: dipdiff@istat.it     |
| ITALIA – Milano  | LUXEMBOURG  | NEDERLAND  | NORGE   | PORTUGAL  | SCHWEIZ/SUISSE/SVIZZERA   |
| <b>ISTAT</b><br><b>Ufficio Regionale per la Lombardia</b><br><b>Eurostat Data Shop</b><br>Via Fieno 3<br>I-20123 MILANO<br>Tel. (39) 02 80 61 32 460<br>Fax (39) 02 80 61 32 304<br>E-mail: mileuro@tin.it   | <b>Eurostat Data Shop Luxembourg</b><br>BP 453<br>L-2014 LUXEMBOURG<br>4, rue A. Weicker<br>L-2721 LUXEMBOURG<br>Tel. (352) 43 35-2251<br>Fax (352) 43 35-22221<br>E-mail: dslux@eurostat.datashop.lu   | <b>STATISTICS NETHERLANDS</b><br><b>Eurostat Data Shop-Voorburg</b><br>Postbus 4000<br>2270 JM VOORBURG<br>Nederland<br>Tel. (31-70) 337 49 00<br>Fax (31-70) 337 59 84<br>E-mail: datashop@csb.nl   | <b>Statistics Norway</b><br><b>Library and Information Centre</b><br><b>Eurostat Data Shop</b><br>Kongens gate 6<br>Boks. 81 31, Dep.<br>N-0033 OSLO<br>Tel. (47) 21 09 46 42/43<br>Fax (47) 21 09 45 04<br>E-mail: datashop@ssb.no   | <b>Eurostat Data Shop Lisboa</b><br><b>INE/Serviço de Difusão</b><br>Av. António José de Almeida, 2<br>P-1000-043 LISBOA<br>Tel. (351) 21 842 61 00<br>Fax (351) 21 842 63 64<br>E-mail: data.shop@ine.pt | <b>Statistisches Amt des Kantons</b><br><b>Zürich, Eurostat Data Shop</b><br>Bleicherweg 5<br>CH-8090 Zürich<br>Tel. (41-1) 225 12 12<br>Fax (41-1) 225 12 99<br>E-mail: datashop@statistik.zh.ch<br>Internet: http://www.zh.ch/statistik |
| SUOMI/FINLAND  | SVERIGE   | UNITED KINGDOM   | UNITED KINGDOM  | UNITED STATES OF AMERICA  |   |
| <b>STATISTICS FINLAND</b><br><b>Eurostat Data Shop Helsinki</b><br><b>Tilastokirjasto</b><br>PL 28<br>FIN-00022 Tilastokeskus<br>Työpajakatu 13 B, 2 Kerros, Helsinki<br>P. (358-9) 17 34 22 21<br>F. (358-9) 17 34 22 79<br>Sähköposti:<br>datashop.tilastokeskus@tilastokeskus.fi<br>Internet: http://www.tilastokeskus.fi/tilk/<br>kk/datashop.html | <b>STATISTICS SWEDEN</b><br><b>Information service</b><br><b>Eurostat Data Shop</b><br>Karlavägen 100 - Box 24 300<br>S-104 51 STOCKHOLM<br>Tfn. (46-8) 50 69 48 01<br>Fax (46-8) 50 69 48 99<br>E-post: info@scb.se<br>Internet: http://www.scb.se/info/<br>datashop/e/udatashop.asp | <b>Eurostat Data Shop</b><br><b>Enquiries &amp; advice and publications</b><br><b>Office for National Statistics</b><br>Customers & Electronic Services Unit<br>1 Drummond Gate - B1/05<br>LONDON SW1V 2QQ<br>Tel. (44-20) 75 33 56 76<br>Fax (44-1633) 81 27 62<br>E-mail: eurostat.datashop@ons.gov.uk | <b>Eurostat Data Shop</b><br><b>Electronic Data Extractions,</b><br><b>Enquiries &amp; advice - R.CADE</b><br>Unit 1L Mounjoey Research Centre<br>University of Durham<br>DURHAM DH1 3SW<br>Tel: (44-191) 374 73 50<br>Fax: (44-191) 384 49 71<br>E-mail: r-CADE@dur.ac.uk<br>URL: http://www.rcade.dur.ac.uk | <b>HAVER ANALYTICS</b><br><b>Eurostat Data Shop</b><br>60 East 42nd Street<br>Suite 3310<br>NEW YORK, NY 10165<br>Tel. (1-212) 986 93 00<br>Fax (1-212) 986 69 81<br>E-mail: eurodata@haver.com           |   |

**Media Support Eurostat (for professional journalists only):**

Bech Building Office A3/48 • L-2920 Luxembourg • Tel. (352) 4301 33408 • Fax (352) 4301 32649 • e-mail: eurostat-mediasupport@cec.eu.int

## For information on methodology:

Robert Poschacher, Eurostat/F2, L-2920 Luxembourg, Tel. (352) 4301 35042, Fax (352) 4301 37318,

E-mail: robert.poschacher@cec.eu.int

ORIGINAL: German

Please visit our web site at [www.europa.eu.int/comm/eurostat/](http://www.europa.eu.int/comm/eurostat/) for further information!

A list of worldwide sales outlets is available at the **Office for Official Publications of the European Communities**.

2 rue Mercier – L-2985 Luxembourg  
Tel. (352) 2929 42118 Fax (352) 2929 42709  
Internet Address <http://eur-op.eu.int/fr/generals-ad.htm>  
e-mail: info.info@cec.eu.int

BELGIQUE/BELGIË – DANMARK – DEUTSCHLAND – GREECE/ELLADA – ESPAÑA – FRANCE – IRELAND – ITALIA – LUXEMBOURG – NEDERLAND – ÖSTERREICH  
PORTUGAL – SUOMI/FINLAND – SVERIGE – UNITED KINGDOM – ISLAND – NORGE – SCHWEIZ/SUISSE/SVIZZERA – BALGARIJA – ČESKÁ REPUBLIKA – CYPRUS  
EESTI – HRVATSKA – MAGYARORSZÁG – MALTA – POLSKA – ROMÂNIA – RUSSIA – SLOVAKIA – SLOVENIA – TÜRKIYE – AUSTRALIA – CANADA – EGYPT – INDIA  
ISRAËL – JAPAN – MALAYSIA – PHILIPPINES – SOUTH KOREA – THAILAND – UNITED STATES OF AMERICA

## Order form

I would like to subscribe to Statistics in focus (from 1.1.2001 to 31.12.2001):

(for the Data Shop and sales office addresses see above)

**Formula 1:** All 9 themes (approximately 140 issues)

Paper: EUR 360

Language required:  DE  EN  FR

**Formula 2:** One or more of the following seven themes:

Theme 1 'General statistics'

Paper: EUR 42

Theme 2 'Economy and finance'

Theme 3 'Population and social conditions'

Theme 4 'Industry, trade and services'

Theme 5 'Agriculture and fisheries'

Theme 6 'External trade'

Theme 8 'Environment and energy'

Paper: EUR 84

Language required:  DE  EN  FR

Statistics in focus can be downloaded (pdf file) free of charge from the Eurostat web site. You only need to register. For other solutions, contact your Data Shop.

Please send me a free copy of 'Eurostat mini-guide' (catalogue containing a selection of Eurostat products and services)

Language required:  DE  EN  FR

I would like a free subscription to 'Statistical References', the information letter on Eurostat products and services

Language required:  DE  EN  FR

Mr  Mrs  Ms

(Please use block capitals)

Surname: \_\_\_\_\_ Forename: \_\_\_\_\_

Company: \_\_\_\_\_ Department: \_\_\_\_\_

Function: \_\_\_\_\_

Address: \_\_\_\_\_

Post code: \_\_\_\_\_ Town: \_\_\_\_\_

Country: \_\_\_\_\_

Tel.: \_\_\_\_\_ Fax: \_\_\_\_\_

E-mail: \_\_\_\_\_

### Payment on receipt of invoice, preferably by:

Bank transfer

Visa  Eurocard

Card No: \_\_\_\_\_ Expires on: \_\_\_\_/\_\_\_\_/\_\_\_\_

### Please confirm your intra-Community VAT number:

If no number is entered, VAT will be automatically applied. Subsequent reimbursement will not be possible.