

## Contents

Latest construction trends.....	1
Production indices for construction.....	2
Production indices for building and civil engineering.....	3
New orders.....	4
Employment.....	4
Hours worked.....	5
Wages and salaries.....	5
Input prices.....	6
Building permits.....	6
Indices for building permits in square metres.....	7
Definitions.....	7



# EU-15 construction activity falls by 1.2%

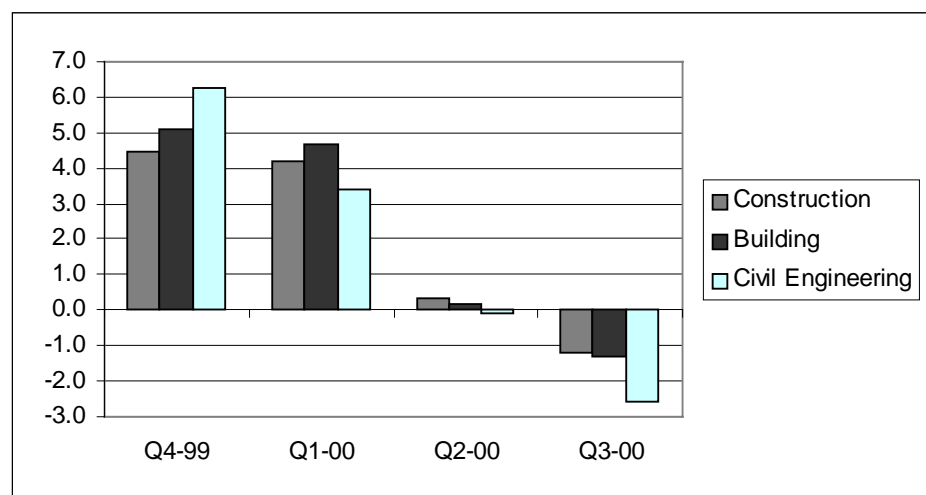
*between the third quarter of 1999 and 2000*

*Gunter Schäfer*

## Latest construction trends

Following robust growth of 4.2% in the first quarter of 2000, and a moderate growth of 0.3% in the second quarter, activity within the European construction sector (EU-15) decreased by 1.2% in the third quarter of 2000, when compared to the third quarter of 1999. Both building and civil engineering followed the same general trend, with their output falling by 1.3% and 2.6% between the third quarter of 1999 and 2000.

The evolution of construction activity in the euro-zone was similar to the EU-15 during the recent periods. On a quarter to quarter comparison the production remained stable. In an annual comparison, production fell by 1.2%.



*Figure 1: EU-15 working day adjusted production volume index for construction, building and civil engineering, growth rates, compared to the same quarter of the previous year (%)*

Quarter on quarter growth rates, seasonally adjusted series				Year on year growth rates, working day adjusted series			
EU-15		EUR-11		EU-15		EUR-11	
Q1-00	0.7	Q1-00	0.0	Q1-00	4.2	Q1-00	4.0
Q2-00	-0.7	Q2-00	-1.4	Q2-00	0.3	Q2-00	0.1
Q3-00	0.1	Q3-00	0.0	Q3-00	-1.2	Q3-00	-1.2

*Table 1: Production volume index for construction, growth rates (%)*

## Production indices for construction

Within the larger Member States, Germany recorded the most pronounced downward trend with its production index for construction falling by 9.5% in the third quarter of 2000 (when compared to the same quarter a year before). German construction industry reported three consecutive quarter on quarter decreases in 2000, equal to -2.0%, -5.5% and -2.7% followed by a positive growth of 7.4% in the last quarter of 2000.

In France, the production index for construction was up by 1.6% in the last quarter of 2000 when compared to same period a year before; on a quarter on quarter comparison there was a slight decrease of 0.4% in the

third quarter, followed by a positive growth of 1.9% in the last quarter of 2000.

There was growth in Italy, where construction output rose by 8.6% between the second quarter of 1999 and 2000, and by 1.5% when compared to the first quarter of 2000 (marking a fourth positive rate in excess of 1.0% using this measure – see table 2).

In Spain, construction output continued to grow at a rapid pace, with a quarter on quarter growth rate of 1.1% in the third quarter of 2000, and growth of 6.9% between the third quarter of 1999 and 2000.

There was a mixed picture for the remaining Member States, with a negative rate of change in United Kingdom and Finland (-1.4% and -4.3% respectively, between the second and third quarters of 2000) and growth of 4.8% in Belgium and of 1.5% in the Netherlands (both fourth quarter 2000) and of 1.2% in Luxembourg and of 0.7% in Austria (third quarter 2000).

In terms of a comparison with the same quarter of a year before, in the third quarter of 2000, Belgium, Luxembourg, the Netherlands and Finland recorded a positive growth, whereas Austria and United Kingdom had a negative rate (-2.7% and -1.1%).

	Quarter on quarter growth rates, seasonally adjusted series						Year on year growth rates, working day adjusted series					
	Q3-99	Q4-99	Q1-00	Q2-00	Q3-00	Q4-00	Q3-99	Q4-99	Q1-00	Q2-00	Q3-00	Q4-00
EU-15	1.0	-0.3	0.7	-0.7	0.1	:	2.5	4.5	4.2	0.3	-1.2	:
EUR-11	0.9	0.7	0.0	-1.4	0.0	2.6	2.5	4.6	4.0	0.1	-1.2	0.9
B	6.4	2.9	-3.7	-0.9	2.3	4.8	3.4	14.5	6.4	4.2	1.2	1.0
DK	:	:	:	:	:	:	:	:	:	:	:	:
D	0.2	-0.9	-2.0	-5.5	-2.7	7.4	0.3	2.5	0.0	-7.7	-9.5	-1.7
EL (1)	:	:	:	:	:	:	:	:	:	:	:	:
E	0.0	2.4	2.3	0.9	1.1	:	6.6	5.8	7.3	5.7	6.9	:
F	0.9	1.0	0.0	0.1	-0.4	1.9	3.6	5.6	3.3	2.0	0.6	1.6
IRL (1)	:	:	:	:	:	:	:	:	:	:	:	:
I (2)	2.2	3.4	1.3	1.5	:	:	2.0	3.4	8.7	8.6	:	:
L	0.5	2.4	1.0	-0.5	1.2	:	1.5	9.2	7.1	2.2	3.6	:
NL	1.3	1.0	0.4	1.1	0.4	1.5	4.3	7.5	3.1	4.5	1.3	4.6
A	0.3	1.1	-1.9	-2.4	0.7	:	2.8	3.0	4.1	-3.5	-2.7	:
P (1)	:	:	:	:	:	:	:	:	:	:	:	:
FIN	-2.5	3.3	6.5	-0.7	-4.3	:	1.8	3.5	13.9	6.3	4.1	:
S (1)	:	:	:	:	:	:	:	:	:	:	:	:
UK	1.7	0.4	0.9	-0.9	-1.4	:	3.1	3.5	5.2	2.3	-1.1	:

Table 2: Production volume index for construction, growth rates (%)

<sup>1</sup> Derogation until end 2001; <sup>2</sup> 4 month delay permitted until end 2001.

## Production indices for building and civil engineering

Within the European building industry, the production index fell in Germany by 11.3% between the third quarter of 1999 and 2000, whilst increasing in Italy, Luxembourg and Spain by 12.4%, 9.4% and 8.1% respectively. In civil engineering the range was less pronounced (from -9.5% in Belgium to 2.1% in Spain) – all data for the third quarter of 2000.

	Quarter on quarter growth rates, seasonally adjusted series						Year on year growth rates, working day adjusted series					
	Q3-99	Q4-99	Q1-00	Q2-00	Q3-00	Q4-00	Q3-99	Q4-99	Q1-00	Q2-00	Q3-00	Q4-00
EU-15 (*)	0.5	1.1	1.5	-2.9	-1.1	:	3.3	5.1	4.7	0.2	-1.3	:
EUR-11	1.0	0.4	0.7	-1.8	-0.1	3.2	3.3	5.1	4.7	0.2	-1.3	1.7
B	6.9	-1.0	2.2	-1.6	-1.9	8.9	29.6	43.2	13.7	6.3	-3.2	7.5
DK	:	:	:	:	:	:	:	:	:	:	:	:
D	-0.1	-1.6	-2.2	-6.0	-3.2	7.6	-1.5	0.1	-1.7	-9.3	-11.3	-2.8
EL (1)	:	:	:	:	:	:	:	:	:	:	:	:
E	2.1	2.2	2.9	1.3	1.5	:	10.2	8.5	11.4	8.9	8.1	:
F	0.8	1.0	0.1	-0.4	0.0	1.5	4.1	5.7	3.5	1.3	0.5	1.3
IRL (1)	:	:	:	:	:	:	:	:	:	:	:	:
I (2)	1.3	0.7	7.0	2.0	2.3	:	2.6	3.2	11.6	11.3	12.4	:
L	-3.6	3.8	7.0	-6.3	4.0	:	-9.8	1.2	0.7	0.1	9.4	:
NL	0.4	1.1	0.2	1.2	1.3	1.6	1.8	7.3	0.8	2.9	3.4	5.4
A	0.4	1.0	-1.2	-2.6	0.5	:	2.3	1.8	4.3	-3.0	-2.4	:
P (3)	:	:	:	:	:	:	:	:	:	:	:	:
FIN	-2.0	4.0	7.5	0.5	-5.2	:	1.9	4.0	12.4	10.2	6.4	:
S (4)	:	:	:	:	:	:	:	:	:	:	:	:
UK	:	:	:	:	:	:	:	:	:	:	:	:

Table 3: Production volume index for building, growth rates (%)

	Quarter on quarter growth rates, seasonally adjusted series						Year on year growth rates, working day adjusted series					
	Q3-99	Q4-99	Q1-00	Q2-00	Q3-00	Q4-00	Q3-99	Q4-99	Q1-00	Q2-00	Q3-00	Q4-00
EU-15 (*)	0.9	1.2	-0.1	-2.0	-1.8	:	3.6	6.2	3.4	-0.1	-2.6	:
EUR-11	0.9	1.0	0.0	-2.0	-1.8	1.5	3.6	6.2	3.4	-0.1	-2.6	-2.2
B	2.1	2.9	1.6	1.0	-13.5	:	22.7	36.9	12.1	6.8	-9.5	:
DK	:	:	:	:	:	:	:	:	:	:	:	:
D	0.7	0.3	-1.8	-4.5	-1.9	6.8	3.5	7.1	3.5	-4.4	-6.3	0.3
EL (5)	:	:	:	:	:	:	:	:	:	:	:	:
E	-3.4	2.5	-0.2	-0.8	0.6	:	-0.2	-0.6	-2.3	-2.0	2.1	:
F	1.2	0.9	-0.2	1.5	-0.9	1.9	2.6	5.5	2.8	3.5	0.8	2.3
IRL (1)	:	:	:	:	:	:	:	:	:	:	:	:
I (6)	3.0	7.5	-7.1	-0.2	:	:	0.5	4.0	1.7	2.5	:	:
L	1.2	1.1	9.7	-6.4	-4.9	:	13.8	17.9	14.1	4.3	-1.4	:
NL	6.9	-1.1	1.8	0.8	-3.2	3.7	12.0	8.0	15.2	9.9	-4.7	1.8
A	-0.4	0.7	-2.8	-3.1	0.8	:	4.0	6.8	2.8	-5.0	-3.3	:
P (3)	:	:	:	:	:	:	:	:	:	:	:	:
FIN	-4.4	0.8	2.5	-5.5	-0.8	:	2.4	1.8	11.6	-6.4	-4.0	:
S (4)	:	:	:	:	:	:	:	:	:	:	:	:
UK	:	:	:	:	:	:	:	:	:	:	:	:

Table 4: Production volume index for civil engineering, growth rates (%)

\* EU-15 and EUR-11 in wda presentation are identical for the common period but have different lengths; thus the subsequent seasonal adjusted series differ; <sup>1</sup> Derogation until June 2003; <sup>2</sup> 1 month delay permitted until 2003; <sup>3</sup> Derogation until June 2002; <sup>4</sup> Derogation until end 2001; <sup>5</sup> Derogation until end 2002; <sup>6</sup> 4 month delay permitted until 2003. \*

## New orders

The index of new orders fell for the fifth consecutive quarter in Germany when compared to the quarter before. In the United Kingdom demand increased by 11.6% between the first and second quarters of 2000, at almost the same pace as in Spain (11.5%).

	Quarter on quarter growth rates, seasonally adjusted series						Year on year growth rates, gross series					
	Q2-99	Q3-99	Q4-99	Q1-00	Q2-00	Q3-00	Q2-99	Q3-99	Q4-99	Q1-00	Q2-00	Q3-00
EU-15 (*)	:	:	:	:	:	:	:	:	:	:	:	:
EUR-11	:	:	:	:	:	:	:	:	:	:	:	:
B	5.2	4.1	5.2	-2.7	-6.4	7.7	4.3	15.8	10.9	12.1	-0.2	3.2
DK (1)	:	:	:	:	:	:	:	:	:	:	:	:
D	1.2	-3.0	-4.3	-2.4	-5.9	-6.3	2.7	-3.5	-6.2	-9.0	-13.5	-16.4
EL (1)	:	:	:	:	:	:	:	:	:	:	:	:
E	-4.2	-5.3	7.1	7.2	11.5	:	15.6	-12.4	0.2	4.1	23.5	:
F (1)	:	:	:	:	:	:	:	:	:	:	:	:
IRL (2)	:	:	:	:	:	:	:	:	:	:	:	:
I (1)	:	:	:	:	:	:	:	:	:	:	:	:
L	-7.7	-4.1	-20.6	19.5	6.2	-11.4	24.4	9.7	-42.4	-15.6	2.4	-11.8
NL (2)	:	:	:	:	:	:	:	:	:	:	:	:
A	3.4	4.0	2.6	-2.8	2.5	-2.8	11.1	14.2	14.7	4.7	8.2	0.1
P (3)	:	:	:	:	:	:	:	:	:	:	:	:
FIN (4)	:	:	:	:	:	:	:	:	:	:	:	:
S (5)	:	:	:	:	:	:	:	:	:	:	:	:
UK	1.3	-4.8	1.4	1.1	11.6	-3.6	-1.3	-15.3	-11.2	-1.2	8.7	10.4

Table 5: New orders index for construction, growth rates (%)

## Employment

The EU-15 employment index fell by 0.8% in the third quarter of 2000 (compared to the previous quarter), following growth of 1.2% and 0.1% in the previous quarters.

	Quarter on quarter growth rates, seasonally adjusted series						Year on year growth rates, gross series					
	Q2-99	Q3-99	Q4-99	Q1-00	Q2-00	Q3-00	Q2-99	Q3-99	Q4-99	Q1-00	Q2-00	Q3-00
EU-15	0.4	0.5	-0.2	1.2	0.1	-0.8	2.6	2.8	0.8	1.9	1.7	0.3
EUR-11	0.6	:	:	:	:	:	3.1	:	:	:	:	:
B	2.8	3.1	2.0	0.3	0.9	1.1	5.4	8.4	9.6	8.3	6.2	4.2
DK	-3.0	-0.8	0.7	:	:	:	0.3	-0.3	-1.0	:	:	:
D	-0.1	-0.5	-1.8	-0.7	-2.1	-2.1	0.1	0.5	-3.3	-3.1	-4.9	-6.3
EL (6)	:	:	:	:	:	:	:	:	:	:	:	:
E	:	:	:	:	:	:	:	:	:	:	:	:
F	0.7	0.8	0.9	1.0	1.1	1.2	1.9	2.5	2.9	3.4	3.7	4.2
IRL	1.6	2.3	0.5	2.2	1.6	1.5	6.4	7.8	5.3	6.8	6.9	6.0
I	2.0	:	:	:	:	:	2.9	:	:	:	:	:
L	0.5	0.3	0.4	0.4	0.4	0.4	2.4	1.7	1.5	1.6	1.7	1.6
NL	0.7	0.5	0.4	0.9	0.5	0.4	2.4	2.3	1.7	2.6	2.4	2.2
A	-0.5	-1.1	-1.4	0.6	-0.5	-0.1	-3.0	-4.3	-4.8	-1.9	-2.4	-1.9
P (3)	:	:	:	:	:	:	:	:	:	:	:	:
FIN	-1.2	4.1	-0.3	1.2	:	:	4.1	10.2	5.9	3.9	:	:
S	1.0	0.8	1.5	:	:	:	5.2	5.0	6.1	:	:	:
UK	0.1	5.1	-1.8	3.6	2.0	0.2	-0.1	2.9	1.0	7.5	9.8	3.9

Table 6: Employment index for construction, growth rates (%)

\* Data available represent less than 60% of the weight of all Member States; thus the European aggregates are not calculated; <sup>1</sup> Derogation until end 2002; <sup>2</sup> Derogation until mid-2001; <sup>3</sup> Derogation until June 2002. <sup>4</sup> Derogation until end 2001; <sup>5</sup> Derogation until April 2002; <sup>6</sup> Derogation until June 2003.

## Hours worked

In the third quarter of 2000 when compared with the previous quarter, the index of hours worked ranged from -3.2% in Germany to 1.4% in the United Kingdom.

	Quarter on quarter growth rates, seasonally adjusted series						Year on year growth rates, gross series					
	Q2-99	Q3-99	Q4-99	Q1-00	Q2-00	Q3-00	Q2-99	Q3-99	Q4-99	Q1-00	Q2-00	Q3-00
EU-15 (*)	:	:	:	:	:	:	:	:	:	:	:	:
EUR-11	:	:	:	:	:	:	:	:	:	:	:	:
B	4.2	5.2	4.5	-2.7	0.1	1.1	24.6	27.4	39.2	11.4	6.2	1.9
DK (1)	:	:	:	:	:	:	:	:	:	:	:	:
D	1.9	-0.6	-1.9	0.0	-4.5	-3.2	4.4	2.5	-0.8	-0.3	-6.4	-8.6
EL (2)	:	:	:	:	:	:	:	:	:	:	:	:
E	:	:	:	:	:	:	:	:	:	:	:	:
F (3)	:	:	:	:	:	:	:	:	:	:	:	:
IRL	-0.5	1.5	-0.1	:	:	:	-3.0	1.5	1.8	:	:	:
I (2)	:	:	:	:	:	:	:	:	:	:	:	:
L	1.5	1.1	1.9	1.0	-0.7	-0.2	2.4	0.5	9.4	8.4	2.5	0.0
NL	0.7	0.7	0.6	0.7	0.7	0.7	2.6	2.7	2.3	3.0	2.6	2.4
A	-0.2	-0.7	-1.2	-0.1	-1.2	-1.2	-2.2	-4.4	-4.5	-0.2	-2.7	-5.2
P (4)	:	:	:	:	:	:	:	:	:	:	:	:
FIN	1.8	3.0	-0.1	-0.2	-2.7	-2.6	8.2	10.7	6.6	5.8	-0.1	-5.9
S (1)	:	:	:	:	:	:	:	:	:	:	:	:
UK	0.3	0.4	0.1	0.4	3.1	1.4	0.0	0.7	1.1	1.3	3.9	5.2

Table 7: Hours worked index for construction, growth rates (%)

## Wages and salaries

Wages and salaries remained practically unchanged in the euro-zone in the third quarter of 2000, when compared to the previous quarter.

	Quarter on quarter growth rates, seasonally adjusted series						Year on year growth rates, gross series					
	Q2-99	Q3-99	Q4-99	Q1-00	Q2-00	Q3-00	Q2-99	Q3-99	Q4-99	Q1-00	Q2-00	Q3-00
EU-15	1.2	1.2	0.7	1.0	0.8	:	3.7	5.0	3.1	5.3	3.7	:
EUR-11	1.5	0.4	-0.6	0.4	-0.4	-0.1	3.4	2.9	1.0	3.0	-0.3	-1.6
B	5.4	1.4	3.6	0.1	-0.8	-0.1	11.0	13.0	18.5	11.7	4.0	2.4
DK	0.5	2.9	0.3	3.8	2.7	1.1	9.1	6.5	2.2	10.1	12.3	6.6
D	1.6	-0.7	-2.2	0.7	-2.5	-2.0	1.7	1.6	-1.7	-0.1	-4.5	-6.0
EL (2)	:	:	:	:	:	:	:	:	:	:	:	:
E	:	:	:	:	:	:	:	:	:	:	:	:
F (3)	:	:	:	:	:	:	:	:	:	:	:	:
IRL	3.5	9.3	1.7	:	:	:	1.6	13.7	15.5	:	:	:
I	0.8	0.0	0.5	:	:	:	4.0	2.1	1.7	:	:	:
L	-1.3	1.8	2.7	-0.2	1.1	1.7	0.3	3.4	8.3	3.0	5.0	5.4
NL	2.1	1.9	1.2	3.0	1.3	0.9	7.5	7.2	5.6	11.1	7.3	5.9
A	-0.3	-0.6	-0.2	0.6	0.1	0.0	-0.1	-2.3	-2.5	0.0	0.5	0.1
P (4)	:	:	:	:	:	:	:	:	:	:	:	:
FIN	3.2	4.4	0.3	5.4	5.0	-1.2	11.9	9.4	7.9	14.2	17.1	9.2
S (1)	:	:	:	:	:	:	:	:	:	:	:	:
UK	-4.2	11.4	2.3	2.9	1.9	:	3.8	14.0	12.1	12.6	19.4	:

Table 8: Wages and salaries index for construction, growth rates (%)

\* Data available represent less than 60% of the weight of all Member States; thus the European aggregates are not calculated; <sup>1</sup> Derogation until end 2001; <sup>2</sup> Derogation until June 2003; <sup>3</sup> Derogation until end 2000; <sup>4</sup> Derogation until June 2002.

## Construction costs

Construction costs for residential buildings in the EU-15 continued to show positive increases of between 0.7% and 1.0% per quarter. In terms of a comparison with the same quarter of a year before, they rose by 3.2% in the EU-15 in the third quarter of 2000. There was no change in Germany in the third quarter of 2000 (compared to the quarter before), whilst Luxembourg also recorded stability in the second quarter of 2000 – otherwise recent growth rates were positive. Output prices are used as proxies for Germany, France, Luxembourg and the United Kingdom.

	Quarter on quarter growth rates, gross series						Year on year growth rates, gross series					
	Q2-99	Q3-99	Q4-99	Q1-00	Q2-00	Q3-00	Q2-99	Q3-99	Q4-99	Q1-00	Q2-00	Q3-00
EU-15	0.8	0.8	0.7	1.0	0.7	0.7	1.9	2.3	2.5	3.4	3.3	3.2
EUR-11	0.4	0.5	0.2	1.1	0.6	0.5	0.5	0.9	0.9	2.3	2.5	2.4
B (1)	:	:	:	:	:	:	:	:	:	:	:	:
DK	2.0	0.0	0.6	-1.1	0.6	2.0	5.4	4.0	3.3	1.4	0.1	2.1
D (2)	-0.1	0.1	0.9	0.1	0.2	0.0	-1.6	-1.4	-0.2	1.0	1.3	1.2
EL	0.8	0.6	0.5	:	:	:	4.6	3.5	3.3	:	:	:
E (3)	0.5	0.9	0.5	2.3	0.8	0.6	1.0	1.9	2.8	4.2	4.4	4.2
F (2)	0.3	0.6	-1.4	1.7	:	:	1.5	2.2	-0.8	1.1	:	:
IRL (1)(4)	3.2	1.4	1.9	1.0	0.5	0.5	5.0	5.2	6.8	7.7	4.8	3.8
I	0.7	0.4	0.5	1.3	0.5	0.7	1.9	1.6	1.7	3.0	2.7	3.0
L (2)	0.0	1.2	0.0	1.5	0.0	:	1.9	2.3	2.3	2.7	2.7	:
NL	0.6	1.1	0.6	1.1	0.5	1.5	1.0	1.9	2.7	3.4	3.4	3.8
A	1.7	1.0	0.2	0.2	0.8	0.6	1.9	2.8	3.1	3.1	2.2	1.7
P (5)	:	:	:	:	:	:	:	:	:	:	:	:
FIN (4)	0.6	0.8	0.4	0.7	1.2	0.7	1.0	1.4	1.9	2.5	3.1	3.0
S (4)	1.1	0.5	0.7	1.2	:	:	2.7	2.4	2.7	3.5	:	:
UK (2)	2.5	2.5	2.4	0.8	:	:	8.0	8.8	9.5	8.5	:	:

Table 9: Construction cost index for residential buildings, growth rates (%)

## Building permits

	Quarter on quarter growth rates, seasonally adjusted series						Year on year growth rates, gross series					
	Q2-99	Q3-99	Q4-99	Q1-00	Q2-00	Q3-00	Q2-99	Q3-99	Q4-99	Q1-00	Q2-00	Q3-00
EU-15	1.1	-2.4	-0.4	1.2	-3.5	:	3.1	-0.7	-6.8	-0.5	-5.0	:
EUR-11	1.2	-2.6	1.2	-0.8	-2.3	:	3.6	-0.2	-8.4	-1.0	-4.5	:
B	-5.5	-4.9	7.9	3.0	-13.1	-5.6	9.2	-1.0	19.6	0.8	-8.2	-8.9
DK	4.8	5.5	-11.3	-2.5	-4.4	-5.0	-8.6	-4.8	-4.7	-4.3	-12.8	-21.5
D	0.8	-2.4	-6.9	-10.7	-17.6	:	-12.1	-7.0	-10.6	-17.7	-33.7	:
EL	:	:	:	:	:	:	:	:	:	:	:	:
E	14.3	-14.7	12.9	:	:	:	27.2	-0.2	9.5	:	:	:
F	-19.4	3.8	5.2	4.0	6.6	-0.1	-5.8	-1.1	-29.8	-8.4	21.2	16.7
IRL	1.3	5.4	-13.6	5.9	:	:	13.4	0.8	-5.4	-2.3	:	:
I (6)	2.7	11.1	10.2	:	:	:	10.9	15.1	17.3	:	:	:
L	-28.1	-2.2	33.8	-28.5	41.3	8.0	-2.9	-2.6	26.8	-40.1	38.2	54.6
NL	20.3	-0.8	-14.7	17.1	-2.6	:	12.3	16.0	-17.0	19.6	-3.1	:
A (7)	:	:	:	:	:	:	:	:	:	:	:	:
P	2.7	1.6	-2.3	3.2	-10.1	-3.0	10.1	5.6	6.3	6.9	-8.6	-12.6
FIN	4.2	13.2	1.0	-0.4	-9.8	-17.1	14.8	22.7	19.4	21.4	1.2	-31.8
S (8)	:	:	:	:	:	:	:	:	:	:	:	:
UK	-2.6	-1.6	2.7	2.2	:	:	6.3	-1.7	6.1	3.8	-11.6	-24.9

Table 10: Number of residential building permits issued, growth rates (%)

<sup>1</sup> Derogation until end 2001; <sup>2</sup> Output prices for new residential buildings; <sup>3</sup> Construction costs for new buildings; <sup>4</sup> Construction costs for 1-dwelling residential buildings; <sup>5</sup> Derogation until June 2002; <sup>6</sup> 3 month delay permitted until June 2003; <sup>7</sup> Data available from 1Q00 onwards; <sup>8</sup> Data available from 1996 onwards - however, due to the lack of value in the base year it is impossible to compute an index.

## Indices for building permits in square metres

In the third quarter of 2000 the total area for which residential building permits were granted declined in all five countries that were able to report data for the third quarter of 2000.

	Q4-97	Q1-98	Q2-98	Q3-98	Q4-98	Q1-99	Q2-99	Q3-99	Q4-99	Q1-00	Q2-00	Q3-00
EU-15	:	:	:	:	:	:	:	:	:	:	:	:
EUR-11	:	:	:	:	:	:	:	:	:	:	:	:
B	133.0	78.9	95.5	103.5	85.6	104.2	98.7	95.2	92.4	96.5	90.3	85.6
DK	137.2	185.2	237.0	180.8	154.5	146.7	205.5	163.1	127.1	136.2	176.9	136.4
D	88.5	74.7	100.1	93.1	87.9	74.5	91.8	91.3	83.6	83.2	79.1	:
EL	184.0	128.6	209.3	166.9	146.4	120.1	:	:	:	:	:	:
E	120.2	114.2	130.8	125.7	152.3	127.6	168.6	127.7	167.7	:	:	:
F (1)	:	:	:	:	:	:	:	:	:	:	:	:
IRL	134.3	160.7	161.3	221.8	164.4	187.2	197.2	209.3	176.0	200.4	:	:
I	75.1	64.4	69.0	61.9	70.2	64.3	76.7	65.8	83.5	:	:	:
L	153.4	95.5	122.6	212.9	105.7	93.9	106.9	85.1	210.0	78.1	135.0	97.7
NL	126.1	95.7	87.6	92.5	127.4	86.8	104.2	108.5	116.9	95.0	98.7	:
A (2)	:	:	:	:	:	:	:	:	:	:	:	:
P	133.7	126.2	138.6	148.0	148.0	146.2	157.5	157.3	161.3	158.8	148.4	145.1
FIN	112.2	152.2	267.1	174.1	130.6	169.9	301.3	207.3	153.6	211.2	329.7	161.6
S (3)	:	:	:	:	:	:	:	:	:	:	:	:
UK (2)	:	:	:	:	:	:	:	:	:	:	:	:

Table 11: Total area for which residential building permits were granted (index) (1995=100)

<sup>1</sup> Data are available from 1998 onwards – however, due to the lack of a value in the base year it is impossible to compute an index;

<sup>2</sup> Derogation until June 2003; <sup>3</sup> Data available from 1996 onwards - however, due to the lack of value in the base year it is impossible to compute an index.

## Definitions

**Production:** measures output volume through the trend in value added at factor costs.

**Construction and civil engineering production:** the two main Sections in the classification of types of construction (CC)

**New orders:** an indication of future production. An order is the value of the contract linking a producer and a third party for the provision of goods and services. The order is accepted if there is sufficient evidence for a valid agreement.

**Employment:** number of persons employed is the total working within and outside the observation unit (including working proprietors, sales representatives and so on). It also includes persons absent for a short, definite period or persons on strike. Part time, trainee and seasonal workers are also included.

**Hours worked:** aggregate number of hours worked, excluding hours paid but not actually worked such as for meals, holidays and sick leave.

**Wages and salaries:** total remuneration, in cash or in kind, payable to all persons counted on the payroll, in return for work done during the accounting period. Includes taxes and social contributions paid by the employee.

**Construction costs** measure the evolution of the costs of the factors employed in the activity of construction and incurred by the contractor; these factors are, among others, the materials, the wages and salaries, the plant and equipment hire; **output prices** show the evolution of prices paid by the client to the contractor.

**Building permits:** shows the future development of construction activity. A building permit is an authorisation to start work on a building project.

**For more information please consult the following web site:**

<http://forum.europa.eu.int/irc/dsis/bmethods/info/data/new/embs/sts/part3a.html>

E-mail: digna.amil@cec.eu.int

# Further information:

## ➤ Reference publications

Title Monthly Panorama of European Business – Annual subscription  
 Catalogue No KS-AM-01-000-EN-C Price EUR 162

## ➤ Databases

New Cronos Theme 4  
 Domain EBT (European Business Trends)

To obtain information or to order publications, databases and special sets of data, please contact the **Data Shop** network:

BELGIQUE/BELGIË	DANMARK	DEUTSCHLAND	ESPAÑA	FRANCE	ITALIA – Roma
<b>Eurostat Data Shop</b> Bruxelles/Brussel Rue du Commerce 124 Handelsstraat 124 B-1049 BRUXELLES / BRUSSEL Tel. (32-2) 299 66 66 Fax (32-2) 295 01 25 E-mail: datashop.brussels@cec.eu.int	<b>DANMARKS STATISTIK</b> Bibliotek og Information <b>Eurostat Data Shop</b> Sejrogade 11 DK-2100 KØBENHAVN Ø Tlf. (45) 39 17 30 30 Fax (45) 39 17 30 03 E-mail: bib@dst.dk	<b>STATISTISCHES BUNDESAMT</b> <b>Eurostat Data Shop Berlin</b> Otto-Braun-Straße 70-72 (Eingang: Karl-Marx-Allee) D-1 0178 BERLIN Tel. (49) 1888-644 94 27/28 Fax (49) 1888-644 94 30 E-mail: datashop@statistik-bund.de	<b>INE Eurostat Data Shop</b> Paseo de la Castellana, 183 Oficina 009 Entrada por Estébanez Calderón E-28046 MADRID Tel. (34-91) 583 91 67 Fax (34-91) 579 71 20 E-mail: datashop.eurostat@ine.es	<b>INSEE Info Service</b> <b>Eurostat Data Shop</b> 195, rue de Bercy Tour Gamma A F-75582 PARIS CEDEX 12 Tel. (33-1) 53 17 88 44 Fax (33-1) 53 17 88 22 E-mail: datashop@insee.fr	<b>ISTAT</b> <b>Centro di Informazione Statistica</b> <b>Sede di Roma, Eurostat Data Shop</b> Via Cesare Balbo, 11a I-00184 ROMA Tel. (39) 06 46 73 31 02/06 Fax (39) 06 46 73 31 01/07 E-Mail: dipdiff@istat.it
ITALIA – Milano	LUXEMBOURG	NEDERLAND	NORGE	PORTUGAL	SCHWEIZ/SUISSE/SVIZZERA
<b>ISTAT</b> <b>Ufficio Regionale per la Lombardia</b> <b>Eurostat Data Shop</b> Via Fieno 3 I-20123 MILANO Tel. (39) 02 80 61 32 460 Fax (39) 02 80 61 32 304 E-mail: mileuro@tin.it	<b>Eurostat Data Shop Luxembourg</b> BP 453 L-2014 LUXEMBOURG 4, rue A. Weicker L-2721 LUXEMBOURG Tel. (352) 43 35 2251 Fax (352) 43 35 2221 E-mail: dslux@eurostat.datashop.lu	<b>STATISTICS NETHERLANDS</b> <b>Eurostat Data Shop-Voorburg</b> Postbus 4000 2270 JM VOORBURG Nederland Tel. (31-70) 337 49 00 Fax (31-70) 337 59 84 E-mail: datashop@csb.nl	<b>Statistics Norway</b> <b>Library and Information Centre</b> <b>Eurostat Data Shop</b> Kongens gate 6 Boks 8131, Dep. N-0033 OSLO Tel. (47) 21 09 46 42/43 Fax (47) 21 09 45 04 E-mail: datashop@ssb.no	<b>Eurostat Data Shop Lisboa</b> <b>INE/Serviço de Difusão</b> Av. António José de Almeida, 2 P-1000-043 LISBOA Tel. (351) 21 842 61 00 Fax (351) 21 842 63 64 E-mail: data.shop@ine.pt	<b>Statistisches Amt des Kantons</b> <b>Zürich, Eurostat Data Shop</b> Bleicherweg 5 CH-8090 Zürich Tel. (41-1) 225 12 12 Fax (41-1) 225 12 99 E-Mail: datashop@zh.ch Internet: http://www.zh.ch/statistik
SUOMI/FINLAND	SVERIGE	UNITED KINGDOM	UNITED KINGDOM	UNITED STATES OF AMERICA	
<b>STATISTICS FINLAND</b> <b>Eurostat Data Shop Helsinki</b> <b>Tilastokirjasto</b> PL 2B FIN-00022 Tilastokeskus Työpajakatu 13 B, 2 Kerros, Helsinki P. (358-9) 17 34 22 21 F. (358-9) 17 34 22 79 Sähköposti: datashop.tilastokeskus@tilastokeskus.fi Internet: http://www.tilastokeskus.fi/tilk/datashop.html	<b>STATISTICS SWEDEN</b> <b>Information service</b> <b>Eurostat Data Shop</b> Karlavägen 100 - Box 24 300 S-104 51 STOCKHOLM Tfn. (46-8) 50 69 48 01 Fax (46-8) 50 69 48 99 E-Post: infoserice@scb.se Internet: http://www.scb.se/info/ datashop/edatashop.asp	<b>Eurostat Data Shop</b> <b>Enquiries &amp; advice and publications</b> <b>Office for National Statistics</b> Customers & Electronic Services Unit 1 Drummond Gate - B1/05 LONDON SW1V 2QQ Tel. (44-20) 75 33 56 76 Fax (44-1 633) 81 27 62 E-mail: eurostat.datashop@ons.gov.uk	<b>Eurostat Data Shop</b> <b>Electronic Data Extractions,</b> <b>Enquiries &amp; advice - R.CADE</b> Unit 1L Mounjoij Rese arch Centre University of Durham DURHAM DH1 3SW Tel: (44-191) 374 73 50 Fax: (44-191) 384 49 71 E-mail: r-cade@dur.ac.uk Internet: http://www.rcade.dur.ac.uk	<b>HAVER ANALYTICS</b> <b>Eurostat Data Shop</b> 60 East 42nd Street Suite 3310 NEW YORK, NY 10165 Tel. (1-212) 986 93 00 Fax (1-212) 986 69 81 E-mail: eurodata@haver.com	

### Media Support Eurostat (for professional journalists only):

Bech Building Office A3/48 - L-2920 Luxembourg - Tel. (352) 4301 33408 - Fax (352) 4301 32649 - e-mail: eurostat-mediasupport@cec.eu.int

## For information on methodology

Digna Amil, Eurostat/D3, L-2920 Luxembourg, Tel. (352) 4301 32321, Fax (352) 4301 34359, E-mail: digna.amil@cec.eu.int

ORIGINAL: English

Please visit our web site at [www.europa.eu.int/comm/eurostat/](http://www.europa.eu.int/comm/eurostat/) for further information!

A list of worldwide sales outlets is available at the **Office for Official Publications of the European Communities**.

2 rue Mercier - L-2985 Luxembourg  
 Tel. (352) 2929 42118 Fax (352) 2929 42709  
 Internet Address <http://eur-op.eu.int/tfr/general/s-ad.htm>  
 e-mail: info.info@cec.eu.int

BELGIQUE/BELGIË - DANMARK - DEUTSCHLAND - GREECE/ELLADA - ESPAÑA - FRANCE - IRELAND - ITALIA - LUXEMBOURG - NEDERLAND - ÖSTERREICH  
 PORTUGAL - SUOMI/FINLAND - SVERIGE - UNITED KINGDOM - ISLAND - NORGE - SCHWEIZ/SUISSE/SVIZZERA - BALGARIJA - ČESKÁ REPUBLIKA - CYPRUS  
 EESTI - HRVATSKA - MAGYARORSZÁG - MALTA - POLSKA - ROMÂNIA - RUSSIA - SLOVAKIA - SLOVENIA - TÜRKIYE - AUSTRALIA - CANADA - EGYPT - INDIA  
 ISRAËL - JAPAN - MALAYSIA - PHILIPPINES - SOUTH KOREA - THAILAND - UNITED STATES OF AMERICA

# Order form

I would like to subscribe to Statistics in focus (from 1.1.2001 to 31.12.2001):  
 (for the Data Shop and sales office addresses see above)

**Formula 1:** All 9 themes (approximately 140 issues)

Paper: EUR 360  
 Language required:  DE  EN  FR

**Formula 2:** One or more of the following seven themes:

Theme 1 'General statistics'  
 Paper: EUR 42

Theme 2 'Economy and finance'

Theme 3 'Population and social conditions'

Theme 4 'Industry, trade and services'

Theme 5 'Agriculture and fisheries'

Theme 6 'External trade'

Theme 8 'Environment and energy'  
 Paper: EUR 84

Language required:  DE  EN  FR

Statistics in focus can be downloaded (pdf file) free of charge from the Eurostat web site. You only need to register. For other solutions, contact your Data Shop.

Please send me a free copy of 'Eurostat mini-guide' (catalogue containing a selection of Eurostat products and services)  
 Language required:  DE  EN  FR

I would like a free subscription to 'Statistical References', the information letter on Eurostat products and services  
 Language required:  DE  EN  FR

Mr  Mrs  Ms

(Please use block capitals)

Surname: \_\_\_\_\_ Forename: \_\_\_\_\_

Company: \_\_\_\_\_ Department: \_\_\_\_\_

Function: \_\_\_\_\_

Address: \_\_\_\_\_

Post code: \_\_\_\_\_ Town: \_\_\_\_\_

Country: \_\_\_\_\_

Tel.: \_\_\_\_\_ Fax: \_\_\_\_\_

E-mail: \_\_\_\_\_

### Payment on receipt of invoice, preferably by:

Bank transfer  
 Visa  Eurocard

Card No: \_\_\_\_\_ Expires on: \_\_\_\_/\_\_\_\_/\_\_\_\_

### Please confirm your intra-Community VAT number:

If no number is entered, VAT will be automatically applied. Subsequent reimbursement will not be possible.