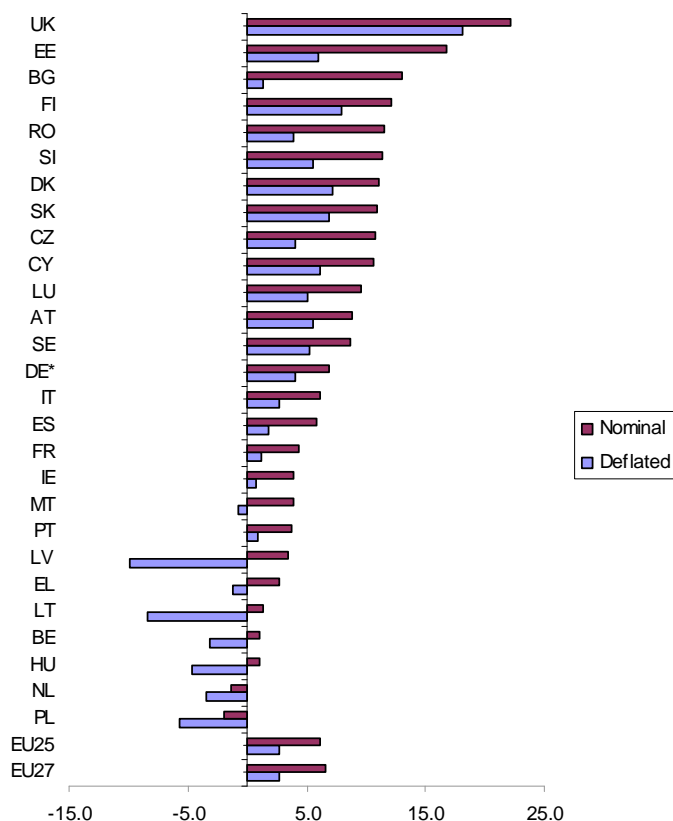


EU Agricultural Prices in 2008

According to the estimates for Agricultural Price Indices (API) that the Member States have supplied to Eurostat, output prices in nominal terms are reckoned to have increased by 6.5% in the European Union (EU-27) in 2008 compared to 2007. When adjusted for inflation (deflated or in

real terms) the result is a 2.7% increase in 2008, following a 6.5% rise in 2007. The increase in the total output index was driven by the rise in real prices of Animal output (6.6%), while Crop output remained at almost the same level as in 2007.

Annual change in the 2008 output price index compared to 2007 (%)



(*) For calculating EU-27 Eurostat has estimated annual output prices for Germany

The 2008 API estimate reveals that eight out of the 27 Member States registered a decrease in the real output price index. The most significant of these were for Latvia (-9.9%), Lithuania (-8.4%) and

Poland (-5.7%). Among the nineteen Member States which registered an increase, the biggest were for the United Kingdom (+18.1%), Finland (+7.9%) and Denmark (+7.2%).

Real output prices increased by 2.7%

In the EU-27, real output prices increased by 2.7% in 2008 compared to 2007.

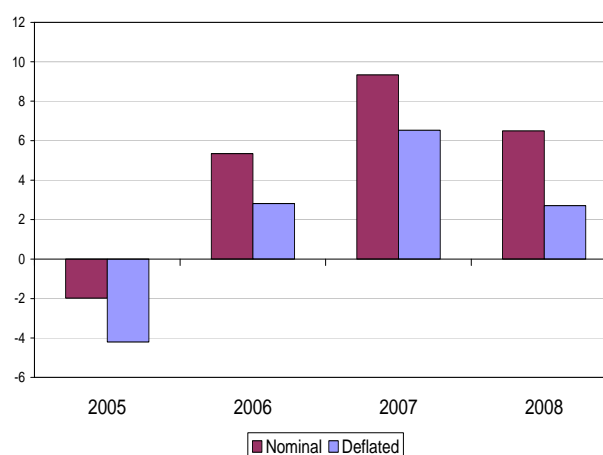
Crop prices registered a slight decrease by 0.6% in 2008. This was the result of sharp decreases for *Potatoes* (-16.4%), *Olive Oil* (-7.2%) and *Wine* (-6.2%). Price increases were observed for *Industrial crops* (+10.8%), *Forage plants* (+7.4%) and *Fruits* (+6.1%) while *Cereal* prices (+1.3%) were only slightly above the prices registered in 2007.

Of the 27 Member States, 13 registered decreases in the real crop prices index. The biggest falls, of more than 10%, were recorded for Ireland (-17.1%), Lithuania (-15.1%), Hungary (-12.9%) and Poland (-10.7%). Increases in the real crop price indices were observed in the other 14 Member States, the strongest in the United Kingdom (+12.4%) and Slovakia (+12.1%).

Prices for *Animals and Animal products* were estimated to be up by 6.6%. The rise in *Animal products* (+6.9%) was almost the same as for *Animals* (+6.4%). The most significant price increases were for *Other animals* (+11.2%), *Pigs* (+10.3%) and *Milk* (+7.5%). The only item that registered a small decrease is *Other animal products*, down by 0.2%.

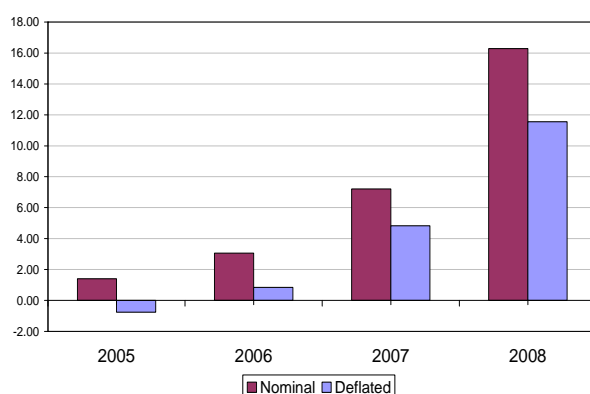
At Member State level, two countries registered a fall; significant in Latvia (-9.9%), while Spain (-0.1%) remained at near the same level as the previous year. The strongest increases were observed in United Kingdom (+22.8%), Sweden (+13.8%), Finland (+10.3%) and Cyprus (+10.2%), while all the other countries registered increases between 9.1% and 0.1%.

Annual change in Output Price index (%)



Input prices up 11.6%

Annual Change in Input Price Index (%)



Despite relatively small increase in real output prices, the EU-27 nominal index of the purchase prices of the *Means of agricultural production* increased by 16.3% in 2008 over 2007. This represents in deflated terms an increase of 11.6%. The real price index of *Goods and services for*

current consumption in agriculture (Input 1) grew by +14.0%.

Real price increases were estimated for all components of *Input 1*. The strongest rise was for *Fertilisers and soil improvers*, which were up 60.6% compared to 2007. The other components with substantial increases were *Energy and Lubricants* (+16.9%) and *Animal feeding-stuffs* (+14.6%). The price level of *Goods and services contributing to Agricultural investment (Input 2)* was 2.3% higher in 2008 than in the previous year. All the three components of *Input 2* were up, the index for *Buildings* (+3.7%) by the most.

All the 22 Member States for which input prices are available registered a positive rate of change for *Means of Agricultural Production (Input total)* in 2008. Stronger increases, of more than 10%, were registered in eleven countries, with real input price index rises of between 21.4% in United Kingdom and 10.1% in France.

Table 1
EU Index of producer prices of agricultural products:
Rates of change of the price indices for EU-27*

API Code		%			
		2005	2006	2007	2008
NOMINAL INDICES					
140000	AGRICULTURAL GOODS OUTPUT (100000+130000)	-2.0	5.3	9.3	6.5
100000	CROP OUTPUT (010000 TO 090000)*	-4.7	8.3	14.2	3.2
010000	CEREALS (including seeds)	-16.2	13.1	54.3	5.6
020000	INDUSTRIAL CROPS	-6.5	-1.7	8.7	15.0
030000	FORAGE PLANTS	-15.8	-2.5	15.0	11.4
040000	VEGETABLES AND HORTICULTURAL PRODUCTS	7.0	2.0	3.8	0.2
050000	POTATOES	-8.7	56.4	-1.6	-12.5
060000	FRUITS	-3.3	1.6	9.7	10.3
070000	WINE	-9.7	0.2	6.7	-2.7
080000	OLIVE OIL	17.0	11.5	-17.0	-3.7
090000	OTHER CROP PRODUCTS	0.8	2.9	16.0	-2.1
130000	ANIMAL OUTPUT (110000+120000)	1.2	2.2	3.9	10.4
110000	ANIMALS	2.7	4.1	-2.5	10.0
111000	Cattle	7.0	7.5	-2.5	5.9
112000	Pigs	1.1	3.6	-8.3	14.4
114000	Sheep and goats	0.4	2.1	-5.2	7.9
115000	Poultry	-1.1	0.4	12.8	9.4
119000	Other animals	-0.4	4.1	-9.8	15.4
120000	ANIMAL PRODUCTS	-1.0	-0.5	13.5	10.9
121000	Milk	-0.3	-1.8	13.5	11.5
122000	Eggs	-5.8	8.3	16.8	7.9
129000	Other animal products	-2.0	6.9	-5.1	4.5
DEFLATED INDICES**					
140000	AGRICULTURAL GOODS OUTPUT (100000+130000)	-4.2	2.8	6.5	2.7
100000	CROP OUTPUT (010000 TO 090000)	-6.7	5.4	11.0	-0.6
010000	CEREALS (including seeds)	-17.0	11.1	49.2	1.3
020000	INDUSTRIAL CROPS	-8.7	-3.8	5.7	10.8
030000	FORAGE PLANTS	-17.6	-4.6	12.5	7.4
040000	VEGETABLES AND HORTICULTURAL PRODUCTS	4.1	0.4	0.4	-3.2
050000	POTATOES	-10.8	51.4	-3.2	-16.4
060000	FRUITS	-6.6	-1.0	6.7	6.1
070000	WINE	-11.9	-2.5	4.7	-6.2
080000	OLIVE OIL	13.7	8.3	-18.9	-7.2
090000	OTHER CROP PRODUCTS	-1.1	1.0	14.1	-4.8
130000	ANIMAL OUTPUT (110000+120000)	-1.4	0.1	1.6	6.6
110000	ANIMALS	-0.1	2.0	-4.5	6.4
111000	Cattle	4.5	5.1	-4.6	2.4
112000	Pigs	-1.7	1.5	-10.2	10.3
114000	Sheep and goats	-2.4	-1.4	-7.3	4.5
115000	Poultry	-3.8	-2.0	10.7	6.1
119000	Other animals	-2.5	1.9	-11.6	11.2
120000	ANIMAL PRODUCTS	-3.5	-2.6	10.9	6.9
121000	Milk	-2.7	-3.9	10.9	7.5
122000	Eggs	-8.5	6.3	14.1	3.7
129000	Other animal products	-4.1	5.3	-8.4	-0.2

(*) For calculating EU-27 Eurostat has estimated annual output prices for Germany

(**) Consumer price indices used for the deflated indices in 2008 are Eurostat estimates

Table 2
Price indices of agricultural products
Rate of change by Member States

	AGRICULTURAL GOODS OUTPUT				CROP OUTPUT				ANIMAL OUTPUT				
	2005	2006	2007	2008	2005	2006	2007	2008	2005	2006	2007	2008	
NOMINAL INDICES													
EU27	-2.0	5.3	9.3	6.5	-4.7	8.3	14.2	3.2	1.2	2.2	3.9	10.4	EU27
EU25	-1.6	5.1	8.7	6.1	-3.8	7.4	13.0	2.7	0.7	2.7	3.9	10.2	EU25
BE	1.1	7.8	3.6	1.1	1.5	11.4	4.7	-3.8	0.9	5.2	2.9	4.6	BE
BG	-13.8	3.7	20.6	13.1	-17.1	11.6	42.9	12.2	-11.9	-0.8	6.1	13.6	BG
CZ	-6.5	1.1	16.8	10.7	-19.8	7.0	32.8	13.6	1.9	-3.9	1.7	9.4	CZ
DK	-1.6	5.8	3.4	11.1	-6.9	5.2	22.4	7.0	0.7	6.2	-4.0	13.0	DK
DE*	-0.9	8.8	10.0	6.9	-4.2	18.2	12.9	4.6	1.3	2.7	7.8	8.7	DE*
EE	2.7	2.1	8.8	16.8	-3.0	10.3	22.4	14.3	3.8	0.5	6.0	17.4	EE
IE	0.5	5.0	9.9	3.9	7.3	19.6	21.1	-14.5	-0.7	2.3	7.4	8.5	IE
EL	3.1	6.6	7.1	2.7	2.4	7.1	9.6	2.1	5.2	4.9	0.2	4.7	EL
ES	3.2	-0.9	6.0	5.9	4.3	-4.6	9.3	7.0	1.5	4.9	1.6	4.0	ES
FR	-4.3	5.0	11.3	4.4	-8.1	7.7	19.0	-0.3	0.3	2.0	2.1	11.0	FR
IT	-5.3	3.1	3.9	6.1	-7.8	2.3	5.7	6.1	-0.1	4.5	0.9	6.0	IT
CY	0.7	5.6	4.7	10.6	0.2	22.6	5.8	7.9	1.5	-10.3	3.1	14.9	CY
LV	13.1	4.9	19.2	3.4	8.6	7.7	37.6	3.6	15.7	3.3	8.3	3.3	LV
LT	13.1	18.0	19.9	1.3	12.8	31.0	25.2	-6.1	13.4	2.2	11.7	14.3	LT
LU	-0.7	1.8	8.7	9.6	-3.1	4.9	11.6	3.6	0.0	0.9	7.9	11.3	LU
HU	0.7	10.6	22.2	1.0	-0.6	18.0	40.5	-7.7	1.8	4.0	3.6	13.0	HU
MT	-1.0	-0.6	6.4	3.9	1.9	0.6	15.8	-1.7	-2.1	-1.0	2.8	6.3	MT
NL	1.4	11.3	5.0	-1.4	0.7	18.9	2.9	-7.9	2.5	2.4	7.7	7.1	NL
AT	1.1	5.1	8.0	8.8	-2.5	8.8	18.1	4.6	3.1	3.2	2.5	11.3	AT
PL	-1.9	7.5	14.5	-2.0	-2.7	18.1	20.8	-7.2	-1.0	-2.3	7.5	4.7	PL
PT	-2.0	4.0	4.4	3.7	-3.3	3.8	4.3	2.1	0.2	4.3	4.6	6.1	PT
RO	-6.5	9.5	19.4	11.5	-19.1	24.2	32.3	9.7	10.6	-5.3	3.8	14.3	RO
SI	1.3	4.6	8.2	11.4	1.3	9.9	18.4	9.8	1.4	2.2	3.1	12.3	SI
SK	-2.4	-0.2	5.4	10.9	-10.8	1.1	24.0	16.3	1.4	-0.7	-2.0	8.2	SK
FI	-3.0	4.4	5.9	12.1	-7.5	4.8	18.4	7.8	-0.6	4.2	-0.3	14.6	FI
SE	-1.5	4.0	13.4	8.7	-4.7	6.6	27.4	-2.2	0.6	2.3	4.1	17.6	SE
UK	-3.1	4.1	13.2	22.2	-5.6	8.8	21.9	16.3	-1.4	1.1	7.1	27.0	UK
DEFLATED INDICES**													
EU27	-4.2	2.8	6.5	2.7	-6.7	5.4	11.0	-0.6	-1.4	0.1	1.6	6.6	EU27
EU25	-3.8	2.8	6.3	2.7	-6.0	5.1	10.5	-0.7	-1.4	0.5	1.7	6.6	EU25
BE	-1.4	5.4	1.7	-3.2	-1.0	8.9	2.8	-7.8	-1.6	2.8	1.1	0.1	BE
BG	-18.7	-3.5	12.1	1.4	-21.8	3.9	32.8	0.6	-16.9	-7.6	-1.4	1.8	BG
CZ	-8.0	-0.9	13.4	4.1	-21.0	4.8	29.0	6.8	0.2	-5.9	-1.2	2.8	CZ
DK	-3.3	3.9	1.7	7.2	-8.5	3.3	20.4	3.3	-1.1	4.3	-5.5	9.1	DK
DE*	-2.8	6.9	7.5	4.0	-6.0	16.1	10.4	1.7	-0.6	0.9	5.4	5.8	DE*
EE	-1.4	-2.2	2.0	6.0	-6.9	5.6	14.7	3.7	-0.3	-3.8	-0.7	6.5	EE
IE	-1.6	2.2	6.9	0.8	5.0	16.4	17.8	-17.1	-2.8	-0.4	4.4	5.2	IE
EL	-0.3	3.2	4.0	-1.3	-1.1	3.7	6.4	-1.9	1.7	1.5	-2.7	0.6	EL
ES	-0.2	-4.3	3.1	1.7	0.9	-7.9	6.2	2.8	-1.8	1.3	-1.2	-0.1	ES
FR	-6.1	3.1	9.6	1.2	-9.8	5.7	17.2	-3.4	-1.6	0.1	0.5	7.6	FR
IT	-7.4	0.9	1.9	2.6	-9.9	0.1	3.6	2.6	-2.3	2.3	-1.2	2.5	IT
CY	-1.3	3.3	2.5	6.1	-1.8	19.9	3.5	3.5	-0.6	-12.2	1.0	10.2	CY
LV	5.8	-1.6	8.3	-9.9	1.6	1.0	25.0	-9.7	8.2	-3.1	-1.6	-9.9	LV
LT	10.2	13.7	13.3	-8.4	9.9	26.2	18.3	-15.1	10.5	-1.5	5.5	3.3	LT
LU	-4.3	-1.2	5.9	5.1	-6.6	1.8	8.7	-0.7	-3.6	-2.0	5.1	6.8	LU
HU	-2.7	6.3	13.2	-4.7	-4.0	13.4	30.2	-12.9	-1.6	-0.1	-4.0	6.7	HU
MT	-3.5	-3.1	5.7	-0.7	-0.7	-1.9	15.0	-6.0	-4.5	-3.5	2.1	1.6	MT
NL	-0.1	9.5	3.4	-3.5	-0.8	16.9	1.3	-9.8	1.0	0.7	6.0	4.8	NL
AT	-1.0	3.3	5.7	5.5	-4.5	7.0	15.5	1.4	1.0	1.5	0.3	7.9	AT
PL	-4.0	6.1	11.7	-5.7	-4.8	16.6	17.7	-10.7	-3.1	-3.6	4.8	0.7	PL
PT	-4.0	1.0	1.9	0.9	-5.4	0.7	1.8	-0.7	-1.9	1.2	2.1	3.3	PT
RO	-14.3	2.7	13.8	3.8	-25.8	16.5	26.1	2.1	1.4	-11.1	-1.1	6.5	RO
SI	-1.1	2.0	4.2	5.5	-1.1	7.1	14.1	4.0	-1.1	-0.3	-0.6	6.3	SI
SK	-5.1	-4.3	3.5	6.9	-13.2	-3.1	21.7	12.1	-1.4	-4.8	-3.8	4.3	SK
FI	-3.8	3.0	4.3	7.9	-8.2	3.5	16.6	3.8	-1.4	2.8	-1.8	10.3	FI
SE	-2.3	2.5	11.5	5.2	-5.5	5.0	25.3	-5.4	-0.2	0.8	2.4	13.8	SE
UK	-5.0	1.8	10.6	18.1	-7.5	6.3	19.1	12.4	-3.4	-1.2	4.6	22.8	UK

(*) For calculating EU-27 Eurostat has estimated annual output prices for Germany

(**) Consumer price indices used for the deflated indices in 2008 are Eurostat estimates

Table 3
EU Index of purchase prices of the means of agricultural production
Rates of change of the price indices for EU-27*

API Code		2005	2006	2007	2008
	NOMINAL INDICES				%
220000	INPUT TOTAL (INPUT 1 + INPUT 2)	1.4	3.1	7.2	16.3
200000	GOODS AND SERVICES CURRENTLY CONSUMED IN AGR. (INPUT 1)	1.0	3.1	8.4	18.9
201000	SEEDS AND PLANTING STOCK	-1.2	1.0	11.3	8.3
202000	ENERGY; LUBRICANTS	14.5	6.3	2.5	22.1
203000	FERTILISERS AND SOIL IMPROVERS	7.4	5.0	9.9	67.1
204000	PLANT PROTECTION PRODUCTS AND PESTICIDES	0.5	1.4	1.6	6.5
205000	VETERINARY EXPENSES	1.3	2.2	2.2	9.8
206000	ANIMAL FEEDINGSTUFFS	-8.1	1.7	17.5	19.5
207000	MAINTENANCE OF MATERIALS	3.4	4.1	3.4	6.2
208000	MAINTENANCE OF BUILDINGS	0.9	2.9	9.6	7.4
209000	OTHER GOODS AND SERVICES	3.5	2.3	2.8	4.0
210000	GOODS AND SERVICES CONTRIBUTING TO AGR. INVESTMENT (INPUT 2)	3.1	3.0	3.5	6.6
211000	MATERIALS	3.1	2.2	2.5	6.9
212000	BUILDINGS	3.2	4.3	4.9	7.2
219000	OTHER	4.4	5.1	4.0	7.4
	DEFLATED INDICES**				
220000	INPUT TOTAL (INPUT 1 + INPUT 2)	-0.8	0.8	4.8	11.6
200000	GOODS AND SERVICES CURRENTLY CONSUMED IN AGR. (INPUT 1)	-1.2	0.9	5.9	14.0
201000	SEEDS AND PLANTING STOCK	-3.4	-1.4	8.9	3.6
202000	ENERGY; LUBRICANTS	12.1	4.2	0.0	16.9
203000	FERTILISERS AND SOIL IMPROVERS	5.2	2.7	7.4	60.6
204000	PLANT PROTECTION PRODUCTS AND PESTICIDES	-1.7	-0.8	-0.7	2.1
205000	VETERINARY EXPENSES	-0.9	0.0	-0.1	3.9
206000	ANIMAL FEEDINGSTUFFS	-10.1	-0.7	14.9	14.6
207000	MAINTENANCE OF MATERIALS	1.3	1.9	1.2	1.8
208000	MAINTENANCE OF BUILDINGS	-1.2	1.0	7.0	2.8
209000	OTHER GOODS AND SERVICES	1.1	0.0	0.4	0.1
210000	GOODS AND SERVICES CONTRIBUTING TO AGR. INVESTMENT (INPUT 2)	0.9	0.8	1.3	2.3
211000	MATERIALS	0.9	-0.1	0.3	2.5
212000	BUILDINGS	1.0	2.2	2.8	3.1
219000	OTHER	1.8	2.7	1.7	3.7

(*) For calculating EU-27, Eurostat has estimated annual Input prices for Poland. The aggregation at EU-27 level does not include Bulgaria, Estonia, Lithuania, Romania and Germany (2008).

(**) Consumer price indices used for the deflated indices in 2008 are Eurostat estimates.

Table 4
Index of purchase prices of the means of agricultural production
Rates of change by Member State

	%												
	INPUT TOTAL (Input 1 + Input 2)				Goods and services consumed in agriculture (Input 1)				Goods and services contributing to agricultural investment (Input 2)				
	2005	2006	2007	2008	2005	2006	2007	2008*	2005	2006	2007	2008*	
NOMINAL INDICES													
EU27*	1.4	3.1	7.2	16.3	1.0	3.1	8.4	18.9	3.1	3.0	3.5	6.6	EU27*
EU25	1.4	3.1	7.2	16.3	1.0	3.1	8.4	18.9	3.1	3.0	3.5	6.6	EU25
BE	4.0	4.8	10.6	15.2	5.4	5.0	8.3	17.3	11.5	6.0	4.3	6.7	BE
BG	:	:	:	:	:	:	10.5	14.3	:	:	:	:	BG
CZ	-0.6	0.7	6.5	13.8	-1.1	0.7	7.3	15.7	3.2	0.7	0.8	-0.5	CZ
DK	1.6	1.6	8.6	20.0	1.0	1.2	9.9	24.6	3.4	3.3	4.1	3.9	DK
DE	0.4	3.0	7.1	:	-0.1	3.3	8.6	:	1.6	2.1	2.8	:	DE
EE	:	:	:	:	5.1	3.7	9.7	18.4	:	:	:	:	EE
IE	4.0	4.0	6.0	16.7	4.3	4.3	6.7	19.8	2.7	2.7	2.8	3.1	IE
EL	5.1	4.0	6.3	15.3	5.6	4.2	7.4	18.8	3.8	3.3	3.0	3.9	EL
ES	1.9	3.3	5.7	20.4	1.5	3.1	7.9	20.9	4.7	3.9	4.6	6.8	ES
FR	1.9	2.8	5.6	13.6	1.5	2.7	6.5	16.5	3.1	3.1	3.0	5.2	FR
IT	-1.9	3.0	7.0	11.7	-5.3	3.1	9.3	16.3	3.2	3.0	3.7	4.7	IT
CY	7.9	2.1	9.7	15.9	8.3	1.5	10.9	16.2	3.6	7.6	-1.2	0.8	CY
LV	18.0	8.8	11.8	23.0	17.1	9.5	12.9	23.8	23.2	5.0	5.4	18.1	LV
LT	:	:	:	:	8.7	7.4	10.3	30.5	:	:	:	:	LT
LU	1.2	-0.1	6.4	11.5	3.6	-1.1	8.7	16.9	-2.9	1.7	2.6	2.0	LU
HU	-0.1	5.7	14.1	15.5	-0.8	5.5	15.7	17.3	4.5	6.6	4.5	4.4	HU
MT	3.1	2.6	5.1	22.2	3.2	2.6	5.2	22.5	-3.7	1.7	1.6	-1.5	MT
NL	1.5	5.8	7.7	8.6	1.3	6.6	9.4	9.9	2.7	2.5	2.0	3.1	NL
AT	1.3	2.8	6.5	9.1	-0.2	2.4	8.8	12.3	3.8	3.0	2.9	3.4	AT
PL ⁽¹⁾	2.3	0.3	8.0	11.5	2.4	0.3	8.2	11.8	-5.0	0.6	5.5	8.5	PL ⁽¹⁾
PT	3.4	1.5	7.0	10.2	3.4	1.5	7.6	10.7	3.4	1.1	1.9	4.4	PT
RO	:	:	:	:	:	:	:	:	:	:	:	:	RO
SI	1.3	3.6	9.2	20.2	0.0	4.6	11.7	26.4	4.3	1.2	3.6	4.6	SI
SK	0.9	5.3	5.1	13.6	0.4	6.4	5.7	16.2	2.9	1.1	3.0	2.9	SK
FI	3.5	4.8	9.6	10.7	3.0	5.1	10.2	14.5	4.5	4.1	8.2	2.4	FI
SE	1.9	2.9	7.2	15.0	1.3	2.8	8.0	17.4	4.3	3.5	4.6	5.6	SE
UK	2.0	4.0	8.9	25.5	1.8	4.1	9.7	28.4	4.1	2.8	3.3	3.4	UK
DEFLATED INDICES***													
EU27*	-0.8	0.8	4.8	11.6	-1.2	0.9	5.9	14.0	0.9	0.8	1.3	2.3	EU27*
EU25	-0.8	0.8	4.8	11.6	-1.2	0.9	5.9	14.0	0.9	0.8	1.3	2.3	EU25
BE	1.4	2.5	8.6	10.3	2.8	2.6	6.4	12.4	8.8	3.6	2.5	2.2	BE
BG	:	:	:	:	:	:	2.8	2.4	:	:	:	:	BG
CZ	-2.1	-1.3	3.5	7.0	-2.7	-1.3	4.2	8.8	1.6	-1.3	-2.1	-6.4	CZ
DK	-0.2	-0.2	6.8	15.8	-0.7	-0.6	8.1	20.3	1.6	1.4	2.4	0.3	DK
DE	-1.5	1.1	4.7	:	-2.0	1.5	6.2	:	-0.3	0.3	0.6	:	DE
EE	:	:	:	:	0.9	-0.8	2.8	7.4	:	:	:	:	EE
IE	1.8	1.3	3.1	13.2	2.1	1.6	3.7	16.1	0.6	0.0	0.0	0.0	IE
EL	1.6	0.6	3.2	10.8	2.0	0.8	4.3	14.2	0.3	-0.1	0.0	-0.1	EL
ES	-1.4	-0.2	2.8	15.7	-1.8	-0.5	5.0	16.2	1.2	0.4	1.7	2.7	ES
FR	0.0	0.9	3.9	10.1	-0.4	0.8	4.8	13.0	1.2	1.2	1.3	2.0	FR
IT	-4.1	0.8	4.9	8.0	-7.4	0.9	7.1	12.5	1.0	0.7	1.6	1.3	IT
CY	5.8	-0.2	7.3	11.2	6.1	-0.7	8.5	11.5	1.6	5.2	-3.3	-3.3	CY
LV	10.4	2.1	1.5	7.2	9.6	2.7	2.5	7.9	15.2	-1.5	-4.3	2.9	LV
LT	:	:	:	:	5.9	3.5	4.3	18.0	:	:	:	:	LT
LU	-2.5	-3.0	3.7	7.0	-0.1	-3.9	5.9	12.1	-6.4	-1.3	0.0	-2.2	LU
HU	-3.4	1.6	5.7	8.9	-4.1	1.5	7.2	10.7	1.0	2.5	-3.2	-1.5	HU
MT	0.6	0.1	4.3	16.8	0.7	0.1	4.4	17.1	-6.0	-0.8	0.9	-5.8	MT
NL	0.0	4.1	6.1	6.3	-0.2	4.9	7.6	7.6	1.2	0.8	0.4	0.9	NL
AT	-0.8	1.1	4.2	5.7	-2.2	0.7	6.5	8.9	1.7	1.2	0.7	0.3	AT
PL ⁽¹⁾	0.2	-1.0	5.3	7.2	0.3	-1.0	5.5	7.6	-7.0	-0.7	2.9	4.3	PL ⁽¹⁾
PT	1.2	-1.5	4.5	7.2	1.2	-1.5	5.1	7.7	1.2	-1.8	-0.5	1.6	PT
RO	:	:	:	:	:	:	:	:	:	:	:	:	RO
SI	-1.1	1.0	5.2	13.8	-2.4	2.0	7.6	19.8	1.8	-1.3	-0.1	-0.9	SI
SK	-1.9	1.0	3.1	9.5	-2.4	2.1	3.8	12.0	0.1	-3.1	1.1	-0.8	SK
FI	2.7	3.5	7.9	6.6	2.2	3.8	8.5	10.3	3.7	2.8	6.5	-1.5	FI
SE	1.1	1.4	5.5	11.3	0.5	1.3	6.2	13.7	3.5	1.9	2.8	2.2	SE
UK	0.0	1.7	6.4	21.4	-0.3	1.7	7.2	24.1	2.0	0.5	0.9	0.0	UK

* The estimated EU-27 figure does not include Bulgaria, Estonia, Lithuania and Romania. 2008 data regarding input not available for Germany.

** Eurostat estimation

⁽¹⁾ Eurostat estimation based on the quarterly data

➤ **Essential information — Methodological notes**

.....

Calculation of national indices: The EU Agricultural Price Indices are calculated by each Member State on the basis of the Laspeyres formula with base and reference year 2000.

The value weight attached to each elementary index in the output index is equal to the value of the sales of this product (exclusive of VAT) over the base period.

Means of production have to be valued at the purchase price, which is the price the purchaser actually pays for the products. It includes *taxes less subsidies on products (but excludes deductible taxes like deductible VAT)*.

The index is expressed in the form of the weighted average of the elementary indices with fixed base

weights. The weights used are values (of sales or purchases) and not quantities.

The symbol (:) is used when data are not available.

The calculation of the Agricultural Price Indices is based on the methodology from the Handbook for EU Agricultural Price Indices, 2000=100 (January 2005).

The concept of Agricultural price indices (API) from Agricultural price statistics is slightly different from the producer prices in Economic accounts for agriculture (EAA). API are based on the weighting structure of the year 2000 sales/ purchases prices, while the price indices in EAA are based on an average previous year price of the total output/ input prices of the previous year.

Further information

Data: [Eurostat Website:](#)

<http://epp.eurostat.ec.europa.eu/portal/page/portal/eurostat/home/>

Data: [Eurostat Web site/Agriculture and Fisheries](#)

Agriculture, forestry and fisheries

  Agriculture

  Agricultural prices and price indices

Journalists can contact the media support service:

Bech Building Office A4/125 L — 2920 Luxembourg

Tel. (352) 4301 33408 Fax (352) 4301 35349

E-mail: eurostat-mediasupport@ec.europa.eu

European Statistical Data Support:

Eurostat has set up, with the members of the 'European statistical system', a network of support centres in nearly all the Member States and in some of the EFTA countries.

Their mission is to provide help and guidance to Internet users of European statistical data.

Contact details for this support network can be found on our Internet site:

<http://ec.europa.eu/eurostat/>

A list of worldwide sales outlets is available at the:

Office for Official Publications of the European Communities.

2, rue Mercier

L — 2985 Luxembourg

URL: <http://publications.europa.eu>

E-mail: info@publications.europa.eu

Manuscript completed on: 09.02.2009

Data extracted on: 12.01.2009

ISSN 1977-0316

Catalogue number: KS-SF-09-010-EN-N

© European Communities, 2009