

93/2017 - 14 June 2017

First quarter of 2017 compared with the fourth quarter of 2016 Employment up by 0.4% in both the euro area and in the EU28

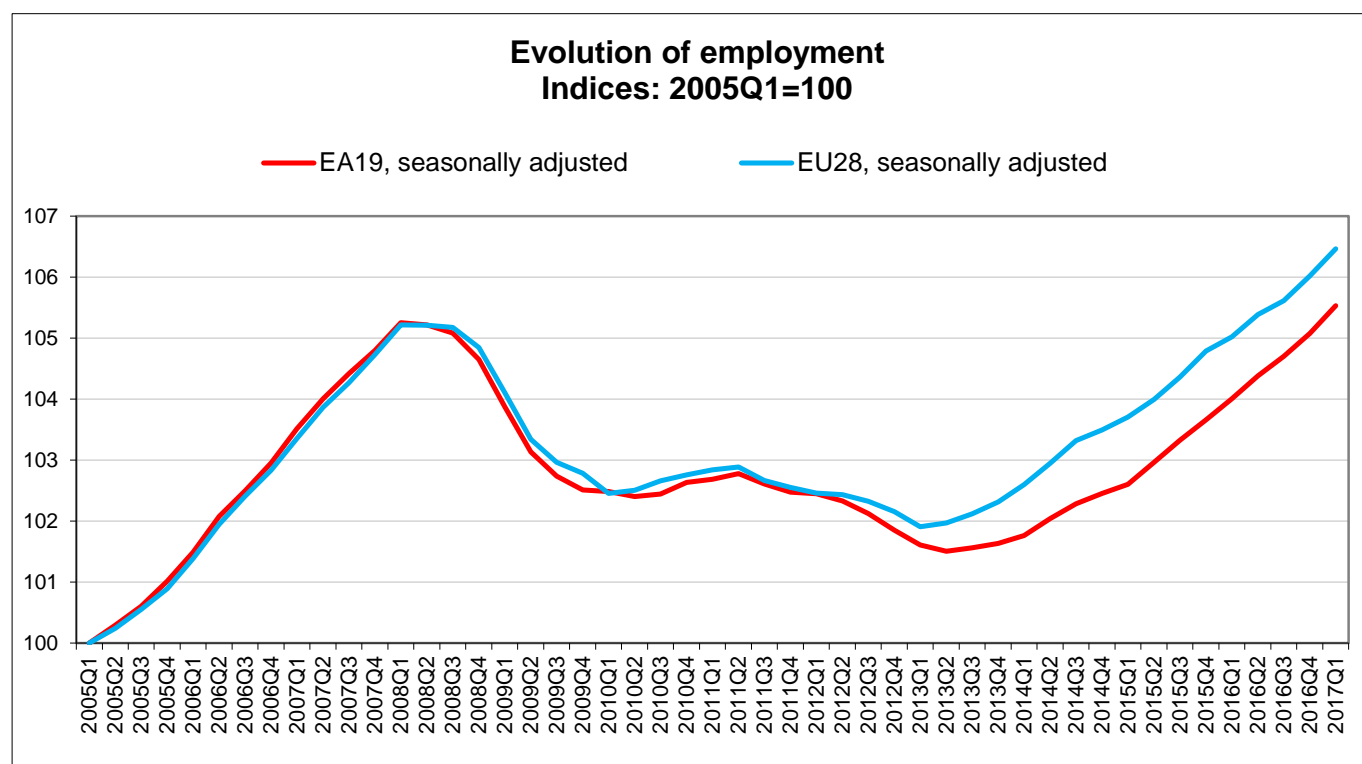
+1.5% and +1.4% respectively compared with the first quarter of 2016

The number of persons employed increased by 0.4% in both the **euro area** (EA19) and in the **EU28** in the first quarter of 2017 compared with the previous quarter, according to national accounts estimates published by **Eurostat, the statistical office of the European Union**. In the fourth quarter of 2016, employment increased also by 0.4% in both areas. These figures are seasonally adjusted.

Compared with the same quarter of the previous year, employment increased by 1.5% in the **euro area** and by 1.4% in the **EU28** in the first quarter of 2017 (after +1.4% and +1.1% respectively in the fourth quarter of 2016).

Eurostat estimates that, in the first quarter of 2017, 234.2 million men and women were employed in the **EU28**, of which 154.8 million were in the **euro area**, highest levels ever recorded in both areas. These figures are seasonally adjusted.

These quarterly data on employment provide a picture of labour input consistent with the output and income measure of national accounts.

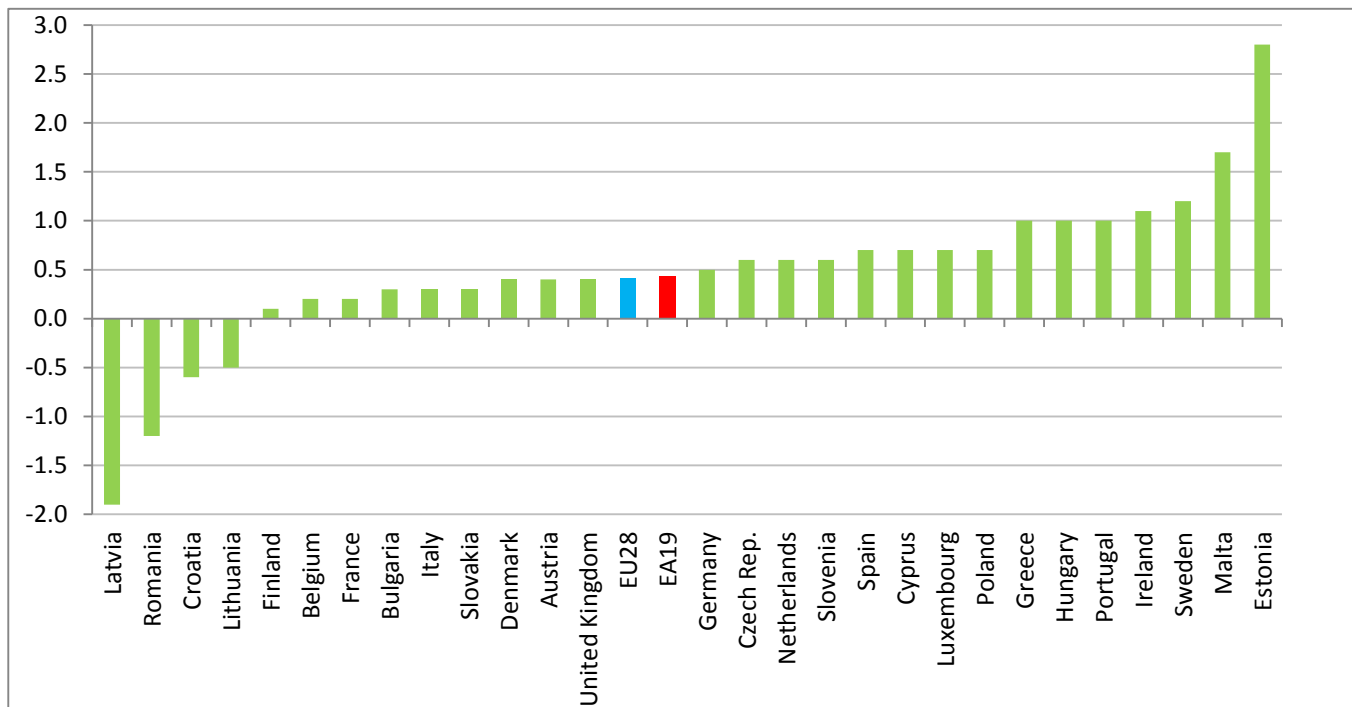


Employment growth in Member States

Among Member States, **Estonia** (+2.8%), **Malta** (+1.7%), **Sweden** (+1.2%) and **Ireland** (+1.1%) recorded the highest increases in the first quarter of 2017 compared with the previous quarter. In contrast, decreases in employment were observed in **Latvia** (-1.9%), **Romania** (-1.2%), **Croatia** (-0.6%) and **Lithuania** (-0.5%).

Member States' growth rates for employment in the first quarter of 2017

% change over the previous quarter, seasonally adjusted



Geographical information

The **euro area** (EA19) includes Belgium, Germany, Estonia, Ireland, Greece, Spain, France, Italy, Cyprus, Latvia, Lithuania, Luxembourg, Malta, the Netherlands, Austria, Portugal, Slovenia, Slovakia and Finland.

The **European Union** (EU28) includes Belgium, Bulgaria, the Czech Republic, Denmark, Germany, Estonia, Ireland, Greece, Spain, France, Croatia, Italy, Cyprus, Latvia, Lithuania, Luxembourg, Hungary, Malta, the Netherlands, Austria, Poland, Portugal, Romania, Slovenia, Slovakia, Finland, Sweden and the United Kingdom.

Methods and definitions

Employment covers employees and self-employed working in resident production units (i.e. the domestic employment concept). Unless otherwise stated, all employment estimates in this release use *persons* as the measurement unit. ESA2010 acknowledges other possible measures for employment: jobs and total hours worked.

For more information

Employment in national accounts - [methodology](#)


Eurostat €-indicators [release calendar](#)

Issued by: **Eurostat Press Office**

Vincent BOURGEAIS
Tel: +352-4301-33 444
eurostat-pressoffice@ec.europa.eu

 [EurostatStatistics](#)

 [@EU_Eurostat](#)


 ec.europa.eu/eurostat/

For further information on data:

Jenny RUNESSON
Tel: +352-4301-36 130

Christine GERSTBERGER
Tel: +352-4301-30 175

estat-gdp-query@ec.europa.eu

 **Media requests:** Eurostat media support / Tel: +352-4301-33408 / eurostat-mediasupport@ec.europa.eu

Employment growth rates*

	Percentage change compared to the previous quarter				Percentage change compared to the same quarter of the previous year			
	2016			2017	2016			2017
	Q2	Q3	Q4	Q1	Q2	Q3	Q4	Q1
EA19	0.4	0.3	0.4	0.4	1.4	1.3	1.4	1.5
EU28	0.4	0.2	0.4	0.4	1.4	1.1	1.1	1.4
Member States								
Belgium	0.5	0.5	0.1	0.2	1.3	1.5	1.3	1.3
Bulgaria	0.5	-0.7	0.5	0.3	1.5	-1.0	0.6	1.2
Czech Republic	0.3	0.0	0.7	0.6	1.6	1.7	2.1	1.5
Denmark	0.4	0.4	0.5	0.4	1.7	1.7	1.7	1.7
Germany	0.3	0.3	0.4	0.5	1.2	1.2	1.3	1.5
Estonia	1.3	-0.9	-1.0	2.8	2.0	-1.1	-0.6	2.2
Ireland	1.0	0.5	0.8	1.1	2.9	2.8	3.1	3.5
Greece	0.6	0.5	-0.8	1.0	1.4	1.6	-0.1	1.3
Spain	0.6	0.7	0.4	0.7	2.6	2.8	2.4	2.4
France	0.1	0.2	0.2	0.2	0.6	0.7	0.7	0.7
Croatia	0.1	0.1	0.5	-0.6	0.7	0.5	0.3	0.0
Italy	0.5	-0.1	0.4	0.3	1.8	1.0	1.1	1.0
Cyprus	0.9	0.8	1.0	0.7	2.7	2.8	3.0	3.4
Latvia	0.1	-1.5	0.5	-1.9	0.9	-1.1	-0.9	-2.8
Lithuania	0.5	-0.2	-0.2	-0.5	2.4	1.5	1.5	-0.4
Luxembourg	0.8	0.8	0.9	0.7	2.9	3.0	3.2	3.2
Hungary	0.5	0.4	0.6	1.0	2.4	1.8	1.9	2.8
Malta	1.6	0.7	1.7	1.7	3.9	3.3	4.4	6.0
Netherlands	0.3	0.4	0.7	0.6	0.8	0.9	1.6	2.0
Austria	0.3	0.4	0.4	0.4	1.1	1.3	1.6	1.5
Poland	0.7	-0.1	0.2	0.7	1.0	0.2	0.0	1.8
Portugal	0.4	1.3	0.4	1.0	0.8	2.2	2.4	3.3
Romania	-0.6	-0.7	1.8	-1.2	-1.5	-1.4	-1.0	-0.4
Slovenia	0.6	0.6	0.6	0.6	2.0	2.1	2.4	2.6
Slovakia	0.6	0.6	0.5	0.3	2.3	2.4	2.6	2.1
Finland	-0.1	0.2	0.1	0.1	0.5	0.8	0.6	0.4
Sweden	0.7	-0.6	1.1	1.2	2.3	1.1	1.6	2.4
United Kingdom	0.5	0.1	0.1	0.4	2.0	1.5	0.9	1.2
EFTA countries								
Norway	0.2	0.1	0.2	0.1	0.1	0.1	0.4	0.5
Switzerland	0.3	0.4	0.0	:	1.7	2.0	1.5	:

: Data not available.

* Percentage change in the number of persons employed in resident production units compared with the previous quarter based on seasonally adjusted data. Percentage change compared with the same quarter of the previous year based on non-seasonally adjusted data.

T1a TOTAL EMPLOYMENT AND EMPLOYMENT BY INDUSTRY

t/t-1 PERCENTAGE CHANGE OVER THE PREVIOUS QUARTER – SEASONALLY ADJUSTED

NACE Rev 2	Total economy				Agriculture, forestry and fishing				Industry (mining, manufacturing, electricity, water and waste)				of which: Manufacturing				Construction				Trade, transport, accommodation and food service activities			
Section					A				B, C, D and E				C				F				G, H and I			
	2016			2017	2016			2017	2016			2017	2016			2017	2016			2017	2016			2017
	Q2	Q3	Q4	Q1	Q2	Q3	Q4	Q1	Q2	Q3	Q4	Q1	Q2	Q3	Q4	Q1	Q2	Q3	Q4	Q1	Q2	Q3	Q4	Q1
EA19	0.4	0.3	0.4	0.4	0.1	0.2	0.5	0.1	0.1	0.2	0.1	0.2	0.1	0.2	0.1	0.2	0.2	-0.1	0.4	0.8	0.6	0.3	0.4	0.3
EU28	0.4	0.2	0.4	0.4	-0.7	-1.8	0.8	0.5	0.4	0.0	0.3	0.3	0.6	-0.1	0.1	0.5	0.4	-0.1	0.3	0.5	0.5	0.4	0.3	0.2

T1b TOTAL EMPLOYMENT AND EMPLOYMENT BY INDUSTRY

t/t-1 PERCENTAGE CHANGE OVER THE PREVIOUS QUARTER – SEASONALLY ADJUSTED

NACE Rev 2	Information and communication				Financial and insurance activities				Real estate activities				Professional and support service activities				Administration and other public services				Arts, entertainment and other services			
Section	J				K				L				M and N				O, P and Q				R, S, T and U			
	2016			2017	2016			2017	2016			2017	2016			2017	2016			2017	2016			2017
	Q2	Q3	Q4	Q1	Q2	Q3	Q4	Q1	Q2	Q3	Q4	Q1	Q2	Q3	Q4	Q1	Q2	Q3	Q4	Q1	Q2	Q3	Q4	Q1
EA19	0.7	0.7	0.8	0.3	0.2	0.0	0.1	-0.4	0.8	0.8	-0.4	0.4	0.5	0.7	0.6	1.0	0.3	0.3	0.3	0.4	0.1	-0.1	0.5	0.4
EU28	1.0	0.9	0.6	2.2	0.0	0.0	-0.1	-0.3	-0.6	-1.0	0.4	2.0	0.7	0.7	0.9	0.9	0.2	0.3	0.3	0.3	0.3	0.4	0.2	-0.1

T2a TOTAL EMPLOYMENT AND EMPLOYMENT BY INDUSTRY

t/t-4 PERCENTAGE CHANGE OVER THE SAME QUARTER OF THE PREVIOUS YEAR – NON-SEASONALLY ADJUSTED

NACE Rev 2	Total economy				Agriculture, forestry and fishing				Industry (mining, manufacturing, electricity, water and waste)				of which: Manufacturing				Construction				Trade, transport, accommodation and food service activities			
Section					A				B, C, D and E				C				F				G, H and I			
	2016			2017	2016			2017	2016			2017	2016			2017	2016			2017	2016			2017
	Q2	Q3	Q4	Q1	Q2	Q3	Q4	Q1	Q2	Q3	Q4	Q1	Q2	Q3	Q4	Q1	Q2	Q3	Q4	Q1	Q2	Q3	Q4	Q1
EA19	1.4	1.3	1.4	1.5	-0.8	-0.4	0.4	0.6	0.6	0.6	0.7	0.7	0.6	0.7	0.8	0.7	-0.1	0.0	0.5	1.4	2.1	1.9	1.8	1.6
EU28	1.4	1.1	1.1	1.4	-3.5	-4.9	-4.5	-2.3	1.1	1.1	1.2	1.1	1.4	1.3	1.3	1.2	1.5	0.8	0.9	1.6	2.1	1.7	1.6	1.5

T2b TOTAL EMPLOYMENT AND EMPLOYMENT BY INDUSTRY

t/t-4 PERCENTAGE CHANGE OVER THE SAME QUARTER OF THE PREVIOUS YEAR – NON-SEASONALLY ADJUSTED

NACE Rev 2	Information and communication				Financial and insurance activities				Real estate activities				Professional and support service activities				Administration and other public services				Arts, entertainment and other services			
Section	J				K				L				M and N				O, P and Q				R, S, T and U			
	2016			2017	2016			2017	2016			2017	2016			2017	2016			2017	2016			2017
	Q2	Q3	Q4	Q1	Q2	Q3	Q4	Q1	Q2	Q3	Q4	Q1	Q2	Q3	Q4	Q1	Q2	Q3	Q4	Q1	Q2	Q3	Q4	Q1
EA19	1.9	2.1	2.6	2.7	0.0	0.1	0.3	-0.3	1.1	1.9	2.1	1.6	2.9	2.7	2.6	2.9	1.3	1.3	1.2	1.2	0.9	0.6	0.6	0.9
EU28	1.3	1.9	2.6	5.1	-0.8	-0.4	-0.2	-0.5	-0.4	-0.9	0.6	0.8	3.1	2.7	2.6	3.2	1.1	1.2	0.9	1.1	1.7	1.6	1.3	0.9