

June 2016

Euro area international trade in goods surplus

€29.2 bn

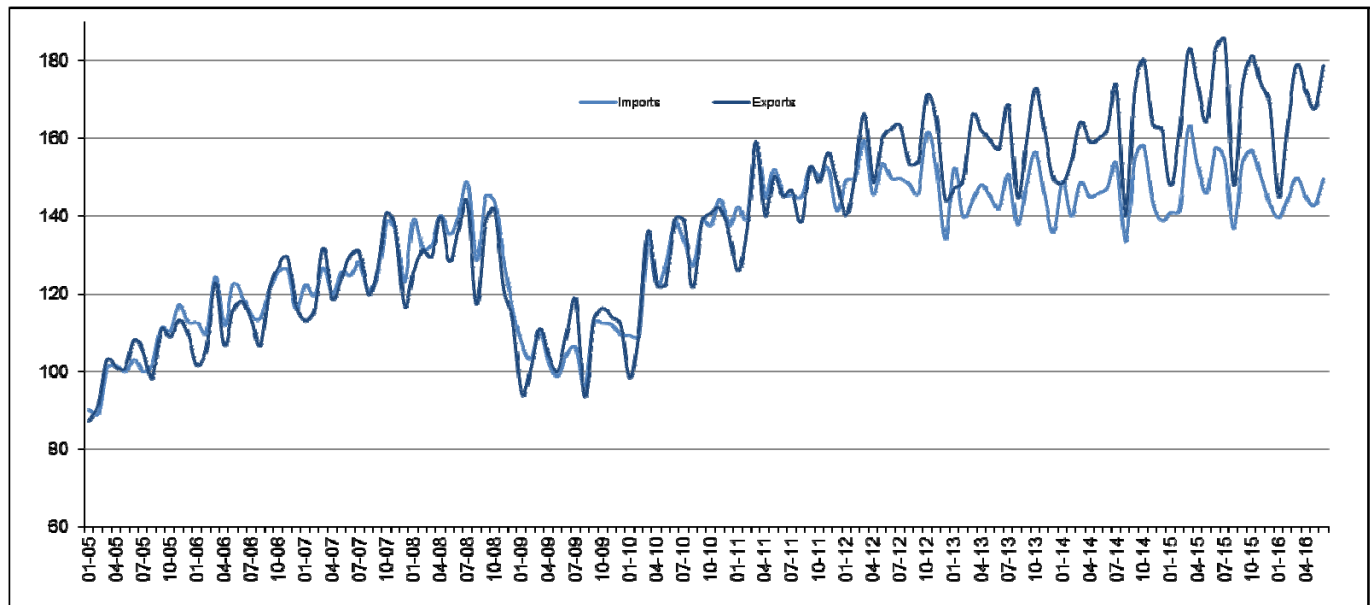
€7.7 bn surplus for EU28

Euro area

The first estimate for **euro area** (EA19) exports of goods to the rest of the world in June 2016 was €178.8 billion, a decrease of 2% compared with June 2015 (€182.8 bn). Imports from the rest of the world stood at €149.5 bn, a fall of 5% compared with June 2015 (€157.4 bn). As a result, the **euro area** recorded a €29.2 bn surplus in trade in goods with the rest of the world in June 2016, compared with +€25.5 bn in June 2015. **Intra-euro area** trade fell to €150.2 bn in June 2016, down by 1% compared with June 2015.

These data are released by **Eurostat**, the statistical office of the European Union.

International trade in goods of the euro area, €bn



In January to June 2016, **euro area** exports of goods to the rest of the world fell to €1 005.5 bn (-1% compared with January-June 2015), while imports fell to €871.0 bn (-3% compared with January-June 2015). As a result the **euro area** recorded a surplus of €134.5 bn, compared with +€111.4 bn in January-June 2015. **Intra-euro area** trade remained nearly stable at €855.9 bn in January-June 2016.

EA19 trade - non seasonally adjusted data

bn €

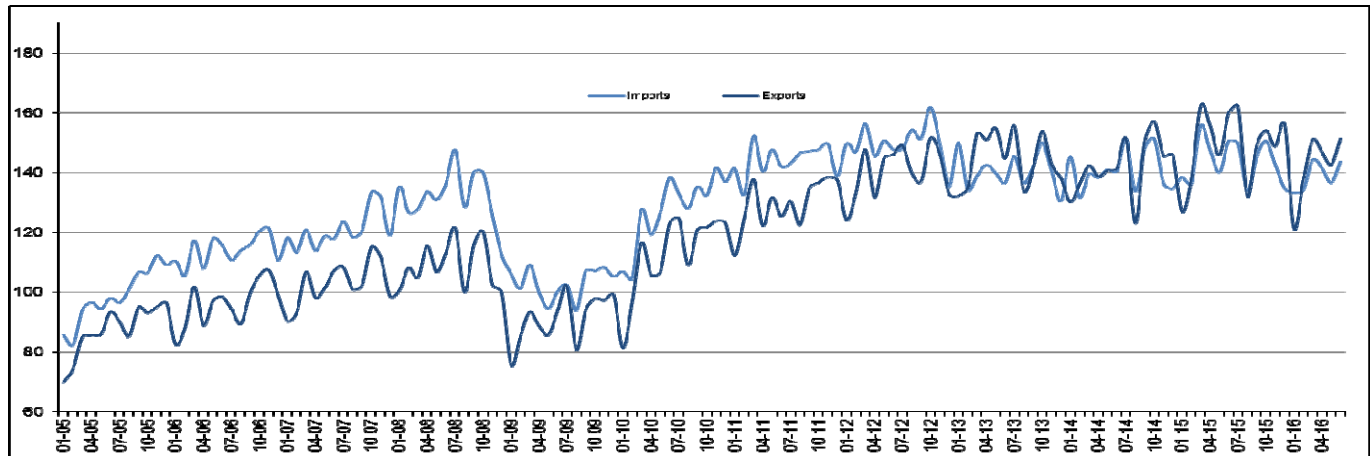
Flows	Jun 15	Jun 16	Growth	Jan-Jun 15	Jan-Jun 16	Growth
Extra-EA19 exports	182.8	178.8	-2%	1 013.0	1 005.5	-1%
Extra-EA19 imports	157.4	149.5	-5%	901.7	871.0	-3%
Extra-EA19 trade balance	25.5	29.2		111.4	134.5	
Intra-EA19 trade	152.3	150.2	-1%	852.6	855.9	0%

The source dataset is available [here](#).

European Union

The first estimate for **extra-EU28** exports of goods in June 2016 was €151.4 billion, -5% compared with June 2015 (€159.8 bn). Imports from the rest of the world stood at €143.8 bn, -4% compared with June 2015 (€150.5 bn). As a result, the **EU28** recorded a €7.7 bn surplus in trade in goods with the rest of the world in June 2016, compared with +€9.3 bn in June 2015. **Intra-EU28 trade** fell to €272.1 bn in June 2016, -1% compared with June 2015.

International trade in goods of the EU28, € bn



In January to June 2016, **extra-EU28** exports of goods fell to €850.4 bn (-4% compared with January-June 2015), while imports fell to €833.5 bn (also -4% compared with January-June 2015). As a result, the **EU28** recorded a surplus of €16.9 bn, compared with +€19.8 bn in January-June 2015. **Intra-EU28 trade** rose to €1 556.1 bn in January-June 2016, +1% compared with January-June 2015.

EU28 trade - non seasonally adjusted data

bn €

Flows	Jun 15	Jun 16	Growth	Jan-Jun 15	Jan-Jun 16	Growth
Extra-EU28 exports	159.8	151.4	-5%	888.7	850.4	-4%
Extra-EU28 imports	150.5	143.8	-4%	868.9	833.5	-4%
Extra-EU28 trade balance	9.3	7.7		19.8	16.9	
Intra-EU28 dispatches	273.6	272.1	-1%	1 538.1	1 556.1	1%

The source dataset is available [here](#).

Main products - EU28

bn €

	Extra-EU28 exports			Extra-EU28 imports			Trade balance	
	Jan-Jun 15	Jan-Jun 16	Growth	Jan-Jun 15	Jan-Jun 16	Growth	Jan-Jun 15	Jan-Jun 16
Total	888.7	850.4	-4%	868.9	833.5	-4%	19.8	16.9
Primary goods:	122.6	109.9	-10%	264.1	206.6	-22%	-141.4	-96.7
<i>Food & drink</i>	55.1	56.1	2%	54.2	54.6	1%	0.9	1.4
<i>Raw materials</i>	23.0	21.2	-8%	37.0	33.9	-8%	-14.1	-12.8
<i>Energy</i>	44.6	32.7	-27%	172.8	118.1	-32%	-128.3	-85.3
Manufactured goods:	731.4	714.6	-2%	581.3	587.3	1%	150.1	127.3
<i>Chemicals</i>	158.6	155.6	-2%	94.3	94.9	1%	64.3	60.8
<i>Machinery & vehicles</i>	370.6	363.3	-2%	262.8	269.8	3%	107.7	93.5
<i>Other manuf'd goods</i>	202.3	195.7	-3%	224.2	222.6	-1%	-21.9	-27.0
Other	34.7	25.9	-25%	23.5	39.6	69%	11.2	-13.7

The source dataset is available [here](#).

Main trading partners - EU28

bn €

	EU28 exports to			EU28 imports from			Trade balance	
	Jan-Jun 15	Jan-Jun 16	Growth	Jan-Jun 15	Jan-Jun 16	Growth	Jan-Jun 15	Jan-Jun 16
United States	185.0	181.0	-2%	126.6	124.2	-2%	58.3	56.8
China	84.2	81.8	-3%	167.4	165.0	-1%	-83.3	-83.2
Switzerland	74.1	68.2	-8%	50.8	60.5	19%	23.3	7.7
Russia	35.4	33.6	-5%	72.3	55.9	-23%	-36.9	-22.3
Turkey	41.1	39.7	-3%	30.3	33.8	12%	10.8	5.9
Japan	26.5	27.3	3%	30.1	33.1	10%	-3.6	-5.8
Norway	24.8	23.7	-4%	38.3	30.3	-21%	-13.5	-6.6
South Korea	24.3	21.4	-12%	20.9	20.9	0%	3.3	0.4
India	19.6	18.7	-5%	20.4	20.3	-1%	-0.9	-1.6
Canada	17.5	17.2	-2%	14.9	14.0	-6%	2.6	3.2

The source dataset is available [here](#).

Member States' total trade (intra-EU + extra-EU)

bn €

	Total exports						Total imports						Trade balance					
	Total		Intra-EU		Extra-EU		Total		Intra-EU		Extra-EU		Total		Intra-EU		Extra-EU	
	Jan-Jun 16	Growth / Jan-Jun 15	Jan-Jun 16	Growth / Jan-Jun 15	Jan-Jun 16	Growth / Jan-Jun 15	Jan-Jun 16	Growth / Jan-Jun 15	Jan-Jun 16	Growth / Jan-Jun 15	Jan-Jun 16	Growth / Jan-Jun 15	Jan-Jun 16	Jan-Jun 15	Jan-Jun 16	Jan-Jun 15	Jan-Jun 16	Jan-Jun 15
Belgium	175.5	-3%	125.8	-3%	49.6	-4%	163.2	-5%	100.6	-7%	62.5	-4%	12.3	9.1	25.2	22.0	-12.9	-12.9
Bulgaria	11.0	-3%	7.5	4%	3.5	-15%	12.2	-6%	8.2	-1%	4.0	-17%	-1.1	-1.6	-0.7	-1.0	-0.5	-0.6
Czech Republic	74.8	7%	63.0	8%	11.8	0%	63.9	4%	50.8	7%	13.0	-5%	10.9	8.7	12.2	10.7	-1.3	-2.0
Denmark	42.3	-3%	26.1	-3%	16.3	-3%	37.4	-3%	27.0	2%	10.5	-14%	4.9	5.1	-0.9	0.5	5.8	4.7
Germany	604.4	1%	358.5	3%	246.0	-1%	471.6	0%	314.9	2%	156.8	-3%	132.8	125.3	43.6	38.4	89.2	86.9
Estonia	5.8	0%	4.4	-1%	1.5	2%	6.7	3%	5.5	6%	1.2	-7%	-0.9	-0.7	-1.2	-0.8	0.3	0.2
Ireland	55.0	1%	28.4	-4%	26.6	7%	30.8	-7%	21.2	-1%	9.6	-17%	24.2	21.4	7.2	8.1	17.0	13.3
Greece	12.0	-8%	7.1	1%	4.9	-18%	21.5	-4%	11.9	0%	9.6	-7%	-9.5	-9.3	-4.8	-4.9	-4.7	-4.4
Spain	130.7	2%	87.8	5%	42.9	-3%	139.3	-1%	86.8	3%	52.5	-6%	-8.6	-12.0	1.0	-0.7	-9.6	-11.3
France	228.1	-1%	138.5	1%	89.5	-4%	259.7	0%	181.6	3%	78.1	-6%	-31.6	-29.1	-43.0	-39.8	11.4	10.8
Croatia	5.8	4%	3.9	3%	2.0	7%	9.5	4%	7.5	5%	2.0	0%	-3.6	-3.5	-3.6	-3.4	0.0	-0.2
Italy	206.8	0%	117.7	3%	89.1	-4%	183.4	-3%	110.8	1%	72.6	-9%	23.3	17.8	6.9	4.8	16.5	13.1
Cyprus	0.8	-21%	0.4	-26%	0.4	-14%	3.0	18%	2.3	28%	0.6	-9%	-2.2	-1.5	-1.9	-1.3	-0.3	-0.2
Latvia	5.1	-3%	3.6	-4%	1.5	-1%	6.0	-5%	4.8	-3%	1.2	-12%	-1.0	-1.1	-1.3	-1.3	0.3	0.2
Lithuania	10.7	-2%	6.6	-4%	4.1	0%	11.8	-5%	8.3	0%	3.5	-16%	-1.1	-1.5	-1.7	-1.4	0.6	-0.1
Luxembourg	7.8	1%	6.5	0%	1.3	7%	9.6	-9%	7.4	-3%	2.2	-23%	-1.9	-2.9	-1.0	-1.2	-0.9	-1.7
Hungary	46.1	4%	37.8	5%	8.2	0%	42.0	2%	32.6	3%	9.4	-3%	4.1	2.9	5.3	4.5	-1.2	-1.5
Malta	1.3	5%	0.5	0%	0.8	9%	3.1	8%	1.4	-21%	1.7	56%	-1.8	-1.6	-0.9	-1.3	-0.9	-0.4
Netherlands	249.0	-3%	188.7	-2%	60.2	-4%	219.4	-4%	104.5	1%	114.9	-8%	29.5	27.8	84.3	90.2	-54.7	-62.5
Austria	68.5	1%	48.6	2%	19.9	-1%	70.0	1%	54.4	3%	15.6	-4%	-1.5	-1.3	-5.8	-5.2	4.3	3.9
Poland	90.0	1%	71.7	2%	18.3	0%	85.8	-1%	62.0	1%	23.8	-5%	4.2	2.2	9.8	9.1	-5.5	-6.9
Portugal	24.8	-2%	19.1	3%	5.7	-16%	29.8	-1%	23.3	1%	6.5	-9%	-5.0	-5.0	-4.2	-4.7	-0.8	-0.3
Romania	28.2	4%	21.3	7%	6.9	-4%	32.6	8%	25.4	9%	7.2	3%	-4.5	-3.3	-4.1	-3.4	-0.4	0.2
Slovenia	14.8	4%	11.4	4%	3.5	3%	13.5	1%	9.6	3%	3.9	-2%	1.3	1.0	1.8	1.7	-0.5	-0.7
Slovakia	34.7	3%	29.7	4%	5.0	0%	33.1	3%	26.7	5%	6.5	-6%	1.6	1.4	3.0	3.2	-1.4	-1.8
Finland	25.8	-5%	15.4	-3%	10.4	-8%	26.6	-1%	19.7	1%	6.9	-6%	-0.8	0.3	-4.3	-3.7	3.5	4.0
Sweden	63.0	-1%	37.4	0%	25.6	-3%	62.3	1%	44.8	5%	17.6	-7%	0.7	2.2	-7.3	-5.4	8.0	7.5
United Kingdom	183.9	-11%	88.8	-5%	95.1	-16%	286.2	2%	146.7	-3%	139.5	7%	-102.3	-74.7	-57.8	-57.4	-44.4	-17.2

The source dataset is available [here](#).

Geographical information

The **euro area** (EA19) includes Belgium, Germany, Estonia, Ireland, Greece, Spain, France, Italy, Cyprus, Latvia, Lithuania, Luxembourg, Malta, the Netherlands, Austria, Portugal, Slovenia, Slovakia and Finland.

The **European Union** (EU28) includes Belgium, Bulgaria, the Czech Republic, Denmark, Germany, Estonia, Ireland, Greece, Spain, France, Croatia, Italy, Cyprus, Latvia, Lithuania, Luxembourg, Hungary, Malta, the Netherlands, Austria, Poland, Portugal, Romania, Slovenia, Slovakia, Finland, Sweden and the United Kingdom.

Methods and definitions

Since the introduction of Intrastat for intra-EU trade on 1 January 1993, the value of dispatches has been consistently higher than that of arrivals. In theory, as dispatches are declared FOB and arrivals CIF, the value of arrivals should be slightly higher than that of dispatches. Eurostat uses dispatches as the more reliable measure of total intra-EU trade as, at aggregated levels, total dispatches has better coverage than total arrivals. Due to this divergence in intra-EU trade, and to the difficulties of interpreting figures in absolute terms at the level of individual Member States, trade balances for individual Member States must be interpreted with caution. The same caution applies to the trade balance of the euro area, which includes some intra-EU trade.

National concepts may differ from the harmonised methodology used by Eurostat, leading to differences between figures in this release and those published nationally, both for raw data and for seasonally adjusted series.

Products are classified according to the Standard international trade classification (SITC), Revision 4.

Revisions and timetable

This News Release is based on data available on 10 August 2016. These are provisional figures based on information provided by Member States. They are subject to frequent revision for up to two years after the month in question.

For more information

Eurostat website section on international trade in goods

Eurostat database section on international trade in goods

Eurostat Statistics Explained article on international trade in goods statistics


Eurostat €-indicators release calendar

Issued by: **Eurostat Press Office**

Tim ALLEN

Tel: +352-4301-33 444

eurostat-pressoffice@ec.europa.eu

 ec.europa.eu/eurostat/


For further information on data:

Anne BERTHOMIEU-CRISTALLO

Tel: +352-4301-33 616

estat-etfree@ec.europa.eu

 [@EU_Eurostat](https://twitter.com/EU_Eurostat)

 **Media requests:** Eurostat media support / Tel: +352-4301-33 408 / eurostat-mediasupport@ec.europa.eu

Annex - Seasonally adjusted data

In June 2016 compared with May 2016, **euro area** seasonally adjusted exports increased by 0.5%, while imports increased by 1.5%. The seasonally adjusted balance was +€23.4 bn, a fall compared with May (+€24.6 bn).

EA19 trade - seasonally adjusted data

bn €

Flows	Jul 15	Aug 15	Sep 15	Oct 15	Nov 15	Dec 15	Jan 16	Feb 16	Mar 16	Apr 16	May 16	Jun 16
Extra-EA19 exports	171.0	165.7	165.9	169.0	168.9	171.3	167.4	167.0	168.1	168.7	165.8	166.7
Extra-EA19 imports	149.5	147.5	147.4	148.8	146.8	147.7	147.0	147.0	143.4	143.4	141.2	143.3
Extra-EA19 trade balance	21.5	18.1	18.4	20.2	22.0	23.6	20.4	20.0	24.7	25.3	24.6	23.4
Intra-EA19 trade	142.4	138.5	140.6	141.4	141.5	140.8	140.3	140.2	139.6	139.8	137.7	140.3

The source dataset is available [here](#).

In June 2016 compared with May 2016, **EU28** seasonally adjusted exports rose by 0.7%, while imports rose by 2.1%. The seasonally adjusted balance was +€3.1 bn, a fall compared with May (+€5.1 bn).

EU28 trade - seasonally adjusted data

bn €

Flows	Jul 15	Aug 15	Sep 15	Oct 15	Nov 15	Dec 15	Jan 16	Feb 16	Mar 16	Apr 16	May 16	Jun 16
Extra-EU28 exports	148.4	146.1	143.4	145.4	146.0	151.0	143.8	141.9	144.2	143.6	140.8	141.8
Extra-EU28 imports	144.2	140.2	140.2	143.4	140.3	139.1	138.3	139.1	140.2	140.5	135.7	138.7
Extra-EU28 trade balance	4.2	5.9	3.2	2.0	5.7	11.8	5.4	2.8	4.0	3.1	5.1	3.1
Intra-EU28 trade	257.3	252.5	255.7	257.5	258.9	256.8	256.1	255.9	254.7	255.9	251.2	255.7

The source dataset is available [here](#).

Contribution of EU28 Member States to extra-EU28 trade - seasonally adjusted data

bn €

	Total exports			Total imports			Trade balance	
	May 16	Jun 16	Growth	May 16	Jun 16	Growth	May 16	Jun 16
EU28	140.8	141.8	0.7%	135.7	138.7	2.1%	5.1	3.1
Belgium	8.2	7.8	-4.2%	9.9	10.0	0.4%	-1.8	-2.1
Bulgaria	0.6	0.6	7.3%	0.7	0.7	0.9%	-0.1	-0.1
Czech Republic	1.9	1.9	0.1%	2.1	2.2	1.3%	-0.2	-0.2
Denmark	2.5	2.7	9.9%	1.7	1.8	4.8%	0.8	0.9
Germany	40.2	41.3	2.7%	25.6	25.8	0.9%	14.6	15.5
Estonia	0.2	0.3	16.9%	0.2	0.2	-3.6%	0.0	0.1
Ireland	4.2	4.9	16.0%	1.7	1.5	-12.8%	2.5	3.4
Greece	0.8	0.8	-6.2%	1.5	1.4	-4.8%	-0.7	-0.6
Spain	7.1	7.0	-0.9%	8.4	8.9	5.8%	-1.3	-1.8
France	16.0	13.7	-14.5%	12.4	12.0	-2.9%	3.6	1.7
Croatia	0.3	0.4	8.3%	0.4	0.3	-14.3%	0.0	0.1
Italy	14.6	15.0	3.1%	11.7	11.8	0.8%	2.9	3.3
Cyprus	0.1	0.1	-2.1%	0.1	0.1	-19.3%	-0.1	0.0
Latvia	0.3	0.3	-8.3%	0.2	0.2	-6.1%	0.1	0.1
Lithuania	0.7	0.7	-5.3%	0.7	0.7	0.2%	0.1	0.0
Luxembourg	0.2	0.2	8.0%	0.3	0.5	39.7%	-0.1	-0.3
Hungary	1.3	1.5	9.8%	1.6	1.6	3.7%	-0.2	-0.2
Malta	0.2	0.1	-7.8%	0.2	0.2	-0.9%	-0.1	-0.1
Netherlands	10.0	10.4	4.2%	18.9	19.6	3.7%	-8.8	-9.1
Austria	3.3	3.3	-1.8%	2.5	2.5	-1.0%	0.8	0.8
Poland	3.3	3.1	-4.3%	3.8	4.0	5.4%	-0.6	-0.9
Portugal	1.0	1.0	6.6%	1.0	1.2	11.2%	-0.1	-0.1
Romania	1.1	1.2	4.7%	1.3	1.2	-1.5%	-0.1	0.0
Slovenia	0.6	0.6	-0.8%	0.6	0.6	5.4%	0.0	-0.1
Slovakia	0.8	0.9	5.8%	1.1	1.2	5.7%	-0.3	-0.3
Finland	1.7	1.8	3.7%	1.2	1.2	-0.7%	0.5	0.6
Sweden	4.0	4.3	5.8%	2.9	3.1	7.6%	1.1	1.1
United Kingdom	15.6	16.0	2.5%	23.0	24.3	5.3%	-7.4	-8.3

The source dataset is available [here](#).

International trade in goods balance, seasonally adjusted, €bn

