

July 2015

Euro area international trade in goods surplus €31.4 bn

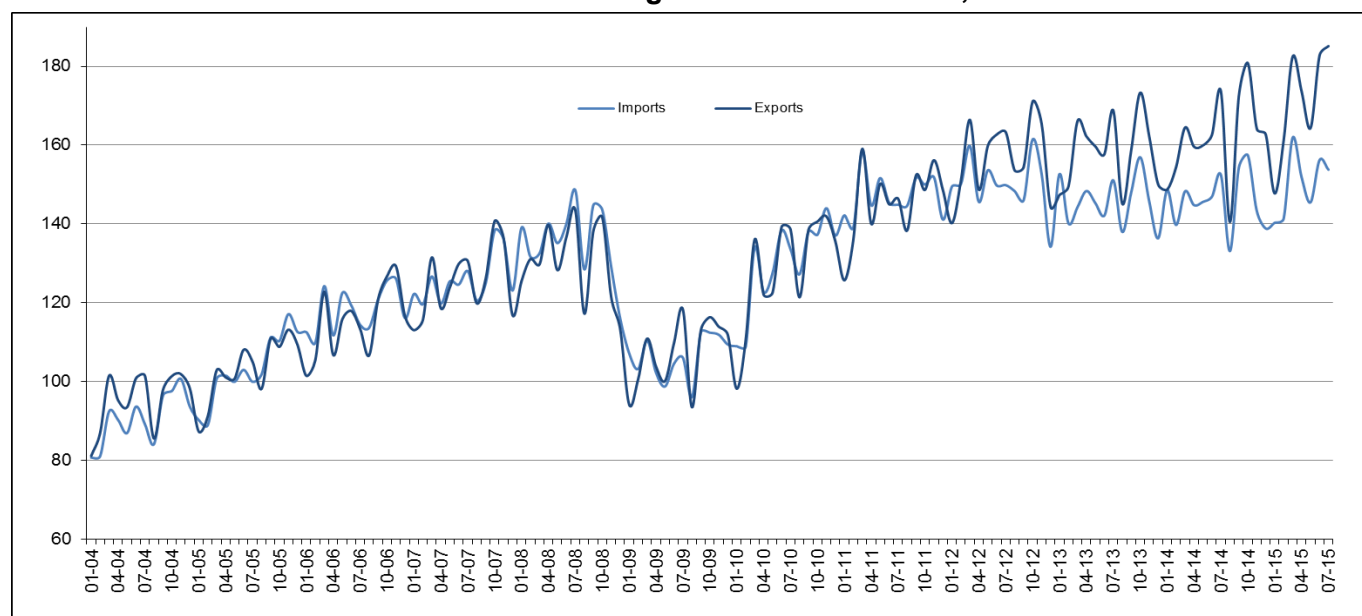
€12.9 bn surplus for EU28

Euro area

The first estimate for **euro area** (EA19) exports of goods to the rest of the world in July 2015 was €185.2 billion, an increase of 7% compared with July 2014 (€173.7 bn). Imports from the rest of the world stood at €153.8 bn, a rise of 1% compared with July 2014 (€152.4 bn). As a result, the **euro area** recorded a €31.4 bn surplus in trade in goods with the rest of the world in July 2015, compared with +€21.2 in July 2014. **Intra-euro area** trade rose to €147.0 bn in July 2015, up by 4% compared with July 2014.

These data are released by **Eurostat, the statistical office of the European Union.**

International trade in goods of the euro area, € bn



In January to July 2015, **euro area** exports of goods to the rest of the world rose to €1197.3 bn (an increase of 7% compared with January-July 2014), while imports rose to €1050.8 bn (an increase of 2% compared with January-July 2014). As a result the **euro area** recorded a surplus of €146.5 bn, compared with +€97.1 bn in January-July 2014. **Intra-euro area** trade rose to €998.3 bn in January-July 2015, up by 3% compared with January-July 2014.

EA19 trade - non seasonally adjusted data

bn €

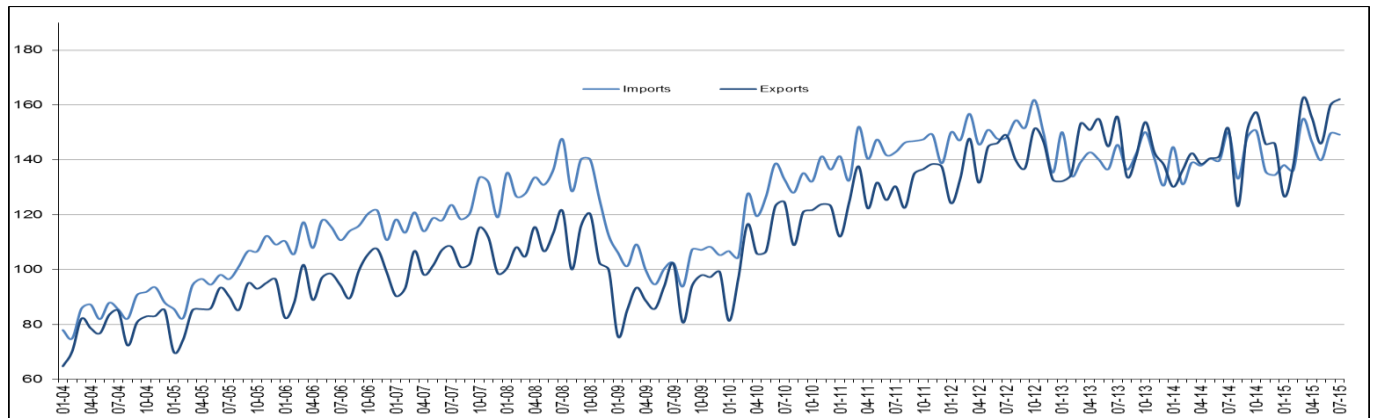
Flows	Jul 14	Jul 15	Growth	Jan-Jul 14	Jan-Jul 15	Growth
Extra-EA19 exports	173.7	185.2	7%	1 123.5	1 197.3	7%
Extra-EA19 imports	152.4	153.8	1%	1 026.4	1 050.8	2%
Extra-EA19 trade balance	21.2	31.4		97.1	146.5	
Intra-EA19 trade	141.9	147.0	4%	969.3	998.3	3%

The source dataset is available [here](#).

European Union

The first estimate for **extra-EU28** exports of goods in July 2015 was €162.1 billion, up by 7% compared with July 2014 (€151.3 bn). Imports from the rest of the world stood at €149.2 bn, down by 1% compared with July 2014 (€150.0 bn). As a result, the **EU28** recorded a €12.9 bn surplus in trade in goods with the rest of the world in July 2015, compared with +€1.2 bn in July 2014. **Intra-EU28** trade rose to €262.3 bn in July 2015, +4% compared with July 2014.

International trade in goods of the EU28, € bn



In January-July 2015, **extra-EU28** exports of goods rose to €1050.4 bn (an increase of 7% compared with January-July 2014), while imports rose to €1014.4 bn (an increase of 3% compared with January-July 2014). As a result, the **EU28** recorded a surplus of €36.0 bn, compared with a deficit of €2.8 bn in January-July 2014. **Intra-EU28** trade rose to €1796.7 bn in January-July 2015, +4% compared with January-July 2014.

EU28 trade - non seasonally adjusted data

bn €

Flows	Jul 14	Jul 15	Growth	Jan-Jul 14	Jan-Jul 15	Growth
Extra-EU28 exports	151.3	162.1	7%	980.2	1 050.4	7%
Extra-EU28 imports	150.0	149.2	-1%	983.0	1 014.4	3%
Extra-EU28 trade balance	1.2	12.9		-2.8	36.0	
Intra-EU28 trade	252.4	262.3	4%	1 721.1	1 796.7	4%

The source dataset is available [here](#).

Main products - EU28

bn €

	Extra-EU28 exports			Extra-EU28 imports			Trade balance	
	Jan-Jul 14	Jan-Jul 15	Growth	Jan-Jul 14	Jan-Jul 15	Growth	Jan-Jul 14	Jan-Jul 15
Total	980.2	1 050.4	7%	983.0	1 014.4	3%	-2.8	36.0
Primary goods:	152.5	143.8	-6%	369.3	307.6	-17%	-216.8	-163.8
<i>Food & drink</i>	60.8	64.8	7%	56.9	62.9	11%	3.9	1.8
<i>Raw materials</i>	25.5	26.8	5%	43.7	43.3	-1%	-18.2	-16.5
<i>Energy</i>	66.3	52.2	-21%	268.7	201.3	-25%	-202.5	-149.2
Manufactured goods:	790.1	864.3	9%	589.5	677.6	15%	200.6	186.7
<i>Chemicals</i>	161.3	185.7	15%	97.7	109.4	12%	63.5	76.3
<i>Machinery & vehicles</i>	405.6	439.6	8%	258.1	303.6	18%	147.5	136.1
<i>Other manuf'd goods</i>	223.3	239.0	7%	233.6	264.6	13%	-10.4	-25.6
Other	37.6	42.4	13%	24.2	29.2	21%	13.4	13.1

The source dataset is available [here](#).

Main trading partners - EU28

bn €

	EU28 exports to			EU28 imports from			Trade balance	
	Jan-Jul 14	Jan-Jul 15	Growth	Jan-Jul 14	Jan-Jul 15	Growth	Jan-Jul 14	Jan-Jul 15
United States	176.5	217.7	23%	117.5	144.7	23%	58.9	73.0
China	94.4	100.2	6%	166.9	197.9	19%	-72.5	-97.7
Switzerland	82.1	86.9	6%	57.2	60.2	5%	24.9	26.7
Russia	61.9	42.5	-31%	112.4	83.4	-26%	-50.5	-40.9
Turkey	42.8	48.2	13%	32.0	35.6	11%	10.8	12.6
Norway	28.8	28.7	0%	51.2	44.8	-13%	-22.4	-16.1
Japan	30.9	32.1	4%	32.0	34.8	9%	-1.1	-2.6
South Korea	24.3	28.6	18%	23.0	24.3	6%	1.3	4.2
India	20.0	22.9	14%	21.7	23.7	9%	-1.7	-0.9
Brazil	22.1	21.3	-4%	18.2	18.6	2%	3.9	2.7

The source dataset is available [here](#).

Member States' total trade (intra-EU + extra-EU)

bn €

	Total exports						Total imports						Trade balance					
	Total		Intra-EU		Extra-EU		Total		Intra-EU		Extra-EU		Total		Intra-EU		Extra-EU	
	Jan-Jul 15	Growth / Jan-Jul 14	Jan-Jul 15	Growth / Jan-Jul 14	Jan-Jul 15	Growth / Jan-Jul 14	Jan-Jul 15	Growth / Jan-Jul 14	Jan-Jul 15	Growth / Jan-Jul 14	Jan-Jul 15	Growth / Jan-Jul 14	Jan-Jul 15	Jan-Jul 14	Jan-Jul 15	Jan-Jul 14	Jan-Jul 15	Jan-Jul 14
Belgium	212.4	2%	151.7	4%	60.7	-2%	197.7	-1%	123.0	-6%	74.7	9%	14.6	8.7	28.7	15.6	-14.1	-6.9
Bulgaria	13.5	9%	8.6	10%	4.9	8%	15.4	5%	9.8	8%	5.6	0%	-2.0	-2.3	-1.2	-1.3	-0.7	-1.1
Czech Republic	81.8	7%	68.0	8%	13.8	3%	72.0	8%	55.6	8%	16.4	9%	9.8	9.7	12.4	11.4	-2.5	-1.6
Denmark	50.5	4%	30.9	0%	19.6	11%	44.7	3%	30.5	2%	14.2	5%	5.8	5.1	0.4	1.0	5.4	4.1
Germany	703.5	7%	407.4	6%	296.1	8%	552.5	3%	362.3	3%	190.2	4%	151.0	123.7	45.1	32.8	105.9	90.9
Estonia	6.8	-1%	5.1	3%	1.7	-12%	7.6	-4%	6.2	-5%	1.5	2%	-0.8	-1.0	-1.1	-1.5	0.2	0.5
Ireland	61.6	22%	33.7	23%	27.9	20%	34.8	13%	23.5	12%	11.3	17%	26.8	19.9	10.2	6.3	16.6	13.6
Greece	15.3	-3%	8.4	11%	6.9	-15%	25.3	-10%	13.4	1%	11.9	-20%	-10.0	-12.4	-5.0	-5.7	-5.0	-6.7
Spain	151.9	5%	98.8	6%	53.1	3%	165.1	4%	99.3	11%	65.7	-4%	-13.1	-13.5	-0.5	3.1	-12.6	-16.6
France	270.0	5%	159.3	2%	110.7	10%	303.5	0%	206.3	0%	97.2	1%	-33.6	-45.1	-47.0	-49.6	13.5	4.5
Croatia	6.6	12%	4.4	16%	2.2	4%	10.7	6%	8.3	9%	2.4	-5%	-4.1	-4.2	-3.9	-3.8	-0.2	-0.4
Italy	247.7	5%	136.0	4%	111.7	7%	221.2	5%	128.4	8%	92.8	1%	26.5	24.1	7.6	11.3	18.9	12.8
Cyprus	1.1	24%	0.6	12%	0.5	42%	2.9	3%	2.1	2%	0.8	4%	-1.9	-2.0	-1.6	-1.6	-0.3	-0.4
Latvia	6.1	0%	4.3	2%	1.8	-2%	7.4	-1%	5.9	-2%	1.5	2%	-1.3	-1.4	-1.6	-1.8	0.3	0.4
Lithuania	13.1	-4%	8.2	7%	4.9	-18%	14.9	2%	9.8	2%	5.1	1%	-1.8	-1.0	-1.6	-1.9	-0.2	0.9
Luxembourg	8.9	8%	7.5	12%	1.4	-10%	12.3	6%	9.1	-4%	3.2	52%	-3.4	-3.3	-1.5	-2.7	-1.9	-0.6
Hungary	51.8	6%	42.1	8%	9.7	1%	48.5	6%	37.1	8%	11.4	-2%	3.3	2.8	5.0	4.8	-1.7	-2.0
Malta	1.4	8%	0.6	-10%	0.8	28%	3.3	21%	2.1	15%	1.2	32%	-1.9	-1.4	-1.5	-1.1	-0.4	-0.3
Netherlands	298.8	2%	224.9	1%	73.9	5%	265.2	2%	120.3	0%	144.9	4%	33.6	33.8	104.6	103.4	-71.0	-69.6
Austria	79.5	2%	55.6	1%	23.9	3%	80.8	0%	61.8	0%	19.1	1%	-1.4	-2.3	-6.2	-6.7	4.8	4.4
Poland	102.1	7%	80.7	10%	21.5	-2%	98.7	2%	69.1	3%	29.7	1%	3.4	-1.3	11.6	6.2	-8.2	-7.5
Portugal	30.0	6%	21.8	7%	8.1	3%	35.6	4%	27.2	6%	8.4	-4%	-5.6	-6.0	-5.3	-5.1	-0.3	-0.9
Romania	32.1	6%	23.5	8%	8.6	0%	36.0	7%	27.7	9%	8.4	1%	-3.9	-3.4	-4.2	-3.7	0.2	0.3
Slovenia	16.9	7%	12.8	8%	4.0	3%	15.6	5%	10.9	6%	4.7	3%	1.3	0.9	1.9	1.5	-0.7	-0.6
Slovakia	39.3	4%	33.5	5%	5.8	-3%	37.6	6%	29.6	10%	8.0	-7%	1.7	2.3	3.9	4.8	-2.1	-2.6
Finland	31.5	-2%	18.3	-2%	13.2	-3%	30.9	-9%	22.3	-2%	8.6	-22%	0.6	-1.5	-4.0	-4.2	4.6	2.7
Sweden	73.1	1%	42.6	1%	30.5	1%	70.5	0%	48.5	1%	22.0	-1%	2.6	1.8	-5.9	-6.1	8.5	7.9
United Kingdom	240.0	10%	107.6	0%	132.4	19%	329.9	11%	176.3	11%	153.5	10%	-89.9	-78.9	-68.8	-51.0	-21.1	-27.9

The source dataset is available [here](#).

Geographical information

The **euro area** (EA19) includes Belgium, Germany, Estonia, Ireland, Greece, Spain, France, Italy, Cyprus, Latvia, Lithuania, Luxembourg, Malta, the Netherlands, Austria, Portugal, Slovenia, Slovakia and Finland.

The **European Union** (EU28) includes Belgium, Bulgaria, the Czech Republic, Denmark, Germany, Estonia, Ireland, Greece, Spain, France, Croatia, Italy, Cyprus, Latvia, Lithuania, Luxembourg, Hungary, Malta, the Netherlands, Austria, Poland, Portugal, Romania, Slovenia, Slovakia, Finland, Sweden and the United Kingdom.

Methods and definitions

Since the introduction of Intrastat for intra-EU trade on 1 January 1993, the value of dispatches has been consistently higher than that of arrivals. In theory, as dispatches are declared FOB and arrivals CIF, the value of arrivals should be slightly higher than that of dispatches. Eurostat uses dispatches as the more reliable measure of total intra-EU trade as, at aggregated levels, total dispatches has better coverage than total arrivals. Due to this divergence in intra-EU trade, and to the difficulties of interpreting figures in absolute terms at the level of individual Member States, trade balances for individual Member States must be interpreted with caution. The same caution applies to the trade balance of the euro area, which includes some intra-EU trade.

National concepts may differ from the harmonised methodology used by Eurostat, leading to differences between figures in this release and those published nationally, both for raw data and for seasonally adjusted series.

Products are classified according to the Standard international trade classification (SITC), Revision 4.

Revisions and timetable

This News Release is based on data available on 10 September 2015. These are provisional figures based on information provided by Member States. They are subject to frequent revision for up to two years after the month in question.

For more information

Eurostat's website section on international trade in goods

Eurostat's database section on international trade in goods

Eurostat's Statistics Explained article on international trade in goods statistics


Eurostat's €-indicators release calendar


Issued by: **Eurostat Press Office**

Tim ALLEN
Tel: **+352-4301-33 444**
[**eurostat-pressoffice@ec.europa.eu**](mailto:eurostat-pressoffice@ec.europa.eu)

For further information on data:

Anne BERTHOMIEU
Tel: **+352-4301-33 616**
[**estat-etfree@ec.europa.eu**](mailto:estat-etfree@ec.europa.eu)

 **Media requests:** Eurostat media support / Tel: +352-4301-33 408 / eurostat-mediasupport@ec.europa.eu

 ec.europa.eu/eurostat/

 [@EU_Eurostat](https://twitter.com/EU_Eurostat)

Annex - Seasonally adjusted data

In July 2015 compared with June 2015, **euro area** seasonally adjusted exports decreased by 0.7%, while imports decreased by 1.1%. The seasonally adjusted balance was +€22.4 bn, an increase compared with June (+€21.9 bn).

EA19 trade - seasonally adjusted data

bn €

Flows	Aug 14	Sep 14	Oct 14	Nov 14	Dec 14	Jan 15	Feb 15	Mar 15	Apr 15	May 15	Jun 15	Jul 15
Extra-EA19 exports	159.3	165.8	166.0	166.8	165.6	163.8	168.6	171.4	173.5	171.0	173.2	172.0
Extra-EA19 imports	144.9	147.8	146.6	146.1	143.4	143.1	147.5	153.9	151.8	149.6	151.2	149.6
Extra-EA19 trade balance	14.4	18.0	19.4	20.7	22.3	20.7	21.1	17.6	21.7	21.3	21.9	22.4
Intra-EA19 trade	138.1	138.2	138.6	139.0	136.6	136.5	138.5	139.7	140.1	141.6	143.3	142.8

The source dataset is available [here](#).

In July 2015 compared with June 2015, **EU28** seasonally adjusted exports fell by 1.2%, while imports fell by 0.6%. The seasonally adjusted balance was +€6.1 bn, a fall compared with June (+€7.1 bn).

EU28 trade - seasonally adjusted data

bn €

Flows	Aug 14	Sep 14	Oct 14	Nov 14	Dec 14	Jan 15	Feb 15	Mar 15	Apr 15	May 15	Jun 15	Jul 15
Extra-EU28 exports	137.8	145.9	145.1	147.0	144.3	142.1	145.9	156.2	156.1	151.5	152.2	150.4
Extra-EU28 imports	141.1	143.0	141.0	139.3	138.7	138.9	144.1	149.4	146.4	144.1	145.1	144.2
Extra-EU28 trade balance	-3.3	2.9	4.1	7.6	5.6	3.3	1.7	6.8	9.7	7.4	7.1	6.1
Intra-EU28 trade	244.3	246.8	247.9	249.7	245.9	246.4	251.2	253.4	253.6	255.6	259.1	256.7

The source dataset is available [here](#).

Contribution of EU28 Member States to extra-EU28 trade - seasonally adjusted data

bn €

	Total exports			Total imports			Trade balance	
	Jun 15	Jul 15	Growth	Jun 15	Jul 15	Growth	Jun 15	Jul 15
EU28	152.2	150.4	-1.2%	145.1	144.2	-0.6%	7.1	6.1
Belgium	8.6	8.2	-5.4%	10.7	10.6	-0.3%	-2.0	-2.5
Bulgaria	0.7	0.7	-0.4%	0.8	0.8	0.6%	-0.1	-0.1
Czech Republic	2.0	2.1	3.7%	2.4	2.7	12.4%	-0.4	-0.6
Denmark	2.7	2.7	-0.3%	2.1	2.0	-3.3%	0.6	0.7
Germany	43.1	43.1	0.0%	27.8	27.4	-1.5%	15.3	15.7
Estonia	0.2	0.3	2.4%	0.2	0.2	-12.6%	0.0	0.1
Ireland	3.9	3.7	-4.5%	1.6	1.6	0.1%	2.3	2.1
Greece	0.9	0.9	-5.1%	1.5	1.4	-0.9%	-0.6	-0.6
Spain	7.5	7.6	1.5%	9.3	9.4	1.2%	-1.8	-1.8
France	16.7	15.7	-6.0%	14.1	13.4	-5.0%	2.5	2.3
Croatia	0.3	0.3	0.3%	0.3	0.4	18.8%	0.0	-0.1
Italy	15.5	15.8	1.8%	13.2	12.7	-3.9%	2.3	3.1
Cyprus	0.1	0.1	-1.2%	0.1	0.1	-10.8%	-0.1	0.0
Latvia	0.3	0.3	16.4%	0.2	0.2	2.5%	0.0	0.1
Lithuania	0.7	0.8	13.6%	0.8	0.8	1.1%	-0.1	0.0
Luxembourg	0.2	0.2	-2.5%	0.5	0.4	-15.9%	-0.3	-0.2
Hungary	1.4	1.4	-0.8%	1.5	1.6	3.5%	-0.1	-0.2
Malta	0.1	0.1	-6.7%	0.2	0.2	-14.9%	-0.1	-0.1
Netherlands	10.8	11.0	1.1%	20.7	20.2	-2.4%	-9.9	-9.3
Austria	3.4	3.4	-1.6%	2.7	2.7	2.7%	0.8	0.6
Poland	3.1	3.1	1.1%	4.3	4.6	7.9%	-1.2	-1.5
Portugal	1.2	1.2	-5.0%	1.2	1.2	3.1%	0.1	0.0
Romania	1.2	1.3	5.5%	1.2	1.3	2.0%	0.0	0.0
Slovenia	0.6	0.6	3.5%	0.7	0.7	-0.9%	-0.1	-0.1
Slovakia	0.8	0.8	-1.1%	1.2	1.2	1.7%	-0.3	-0.4
Finland	1.9	1.9	-2.0%	1.1	1.2	8.9%	0.8	0.6
Sweden	4.5	4.3	-5.4%	3.3	3.2	-4.5%	1.2	1.1
United Kingdom	19.6	19.1	-2.6%	21.4	22.0	2.7%	-1.8	-2.9

The source dataset is available [here](#).

International trade in goods balance, seasonally adjusted, € bn

