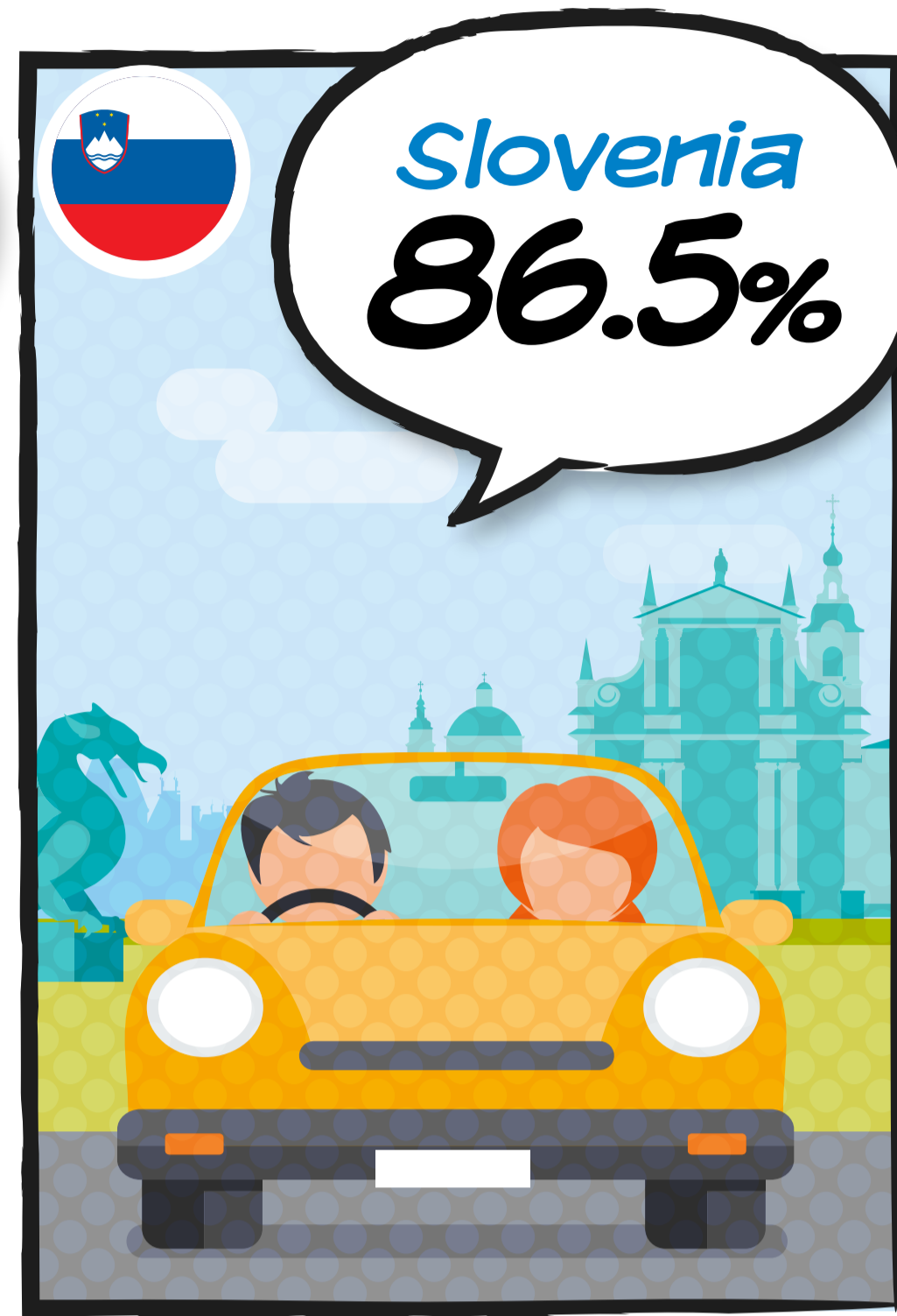
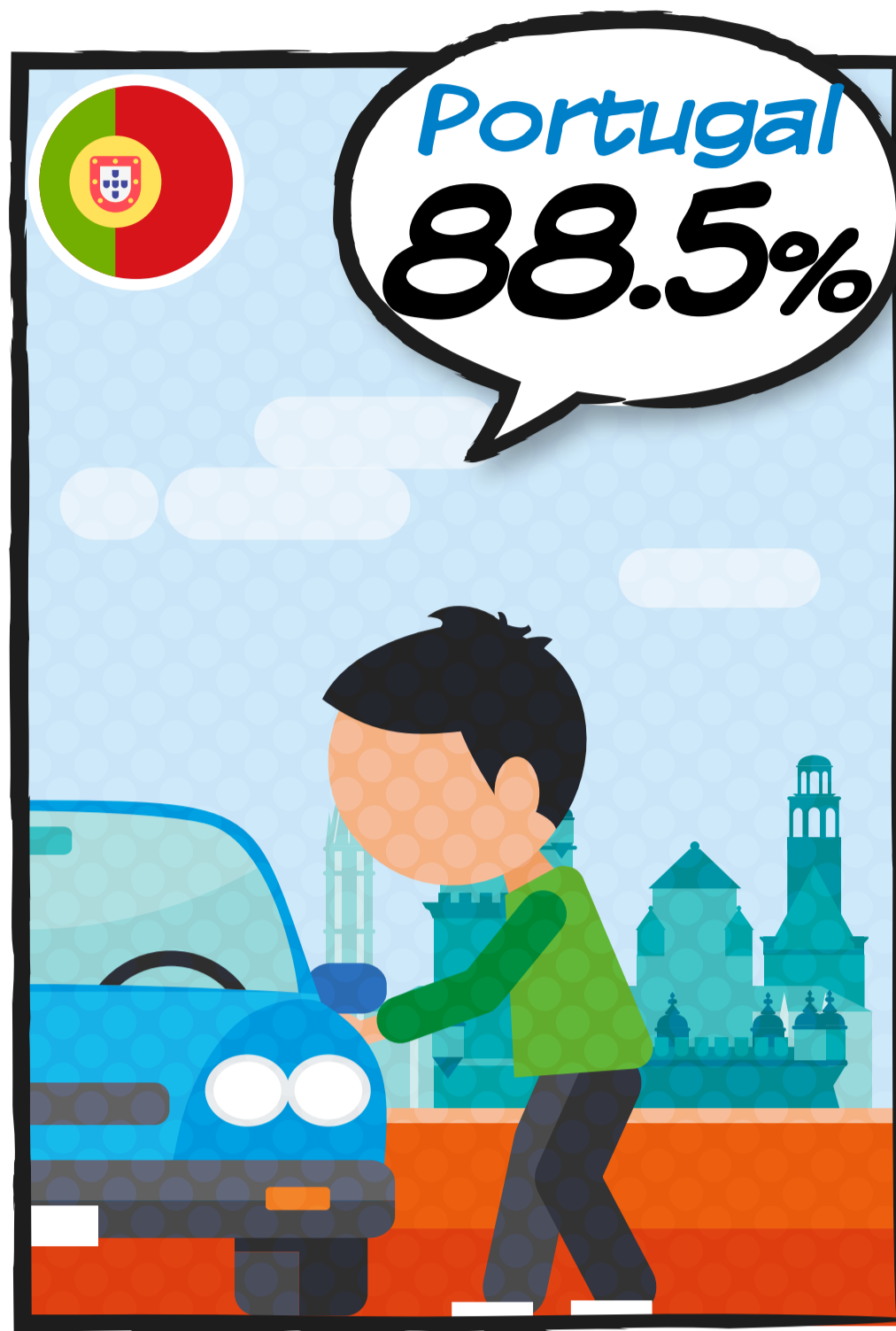
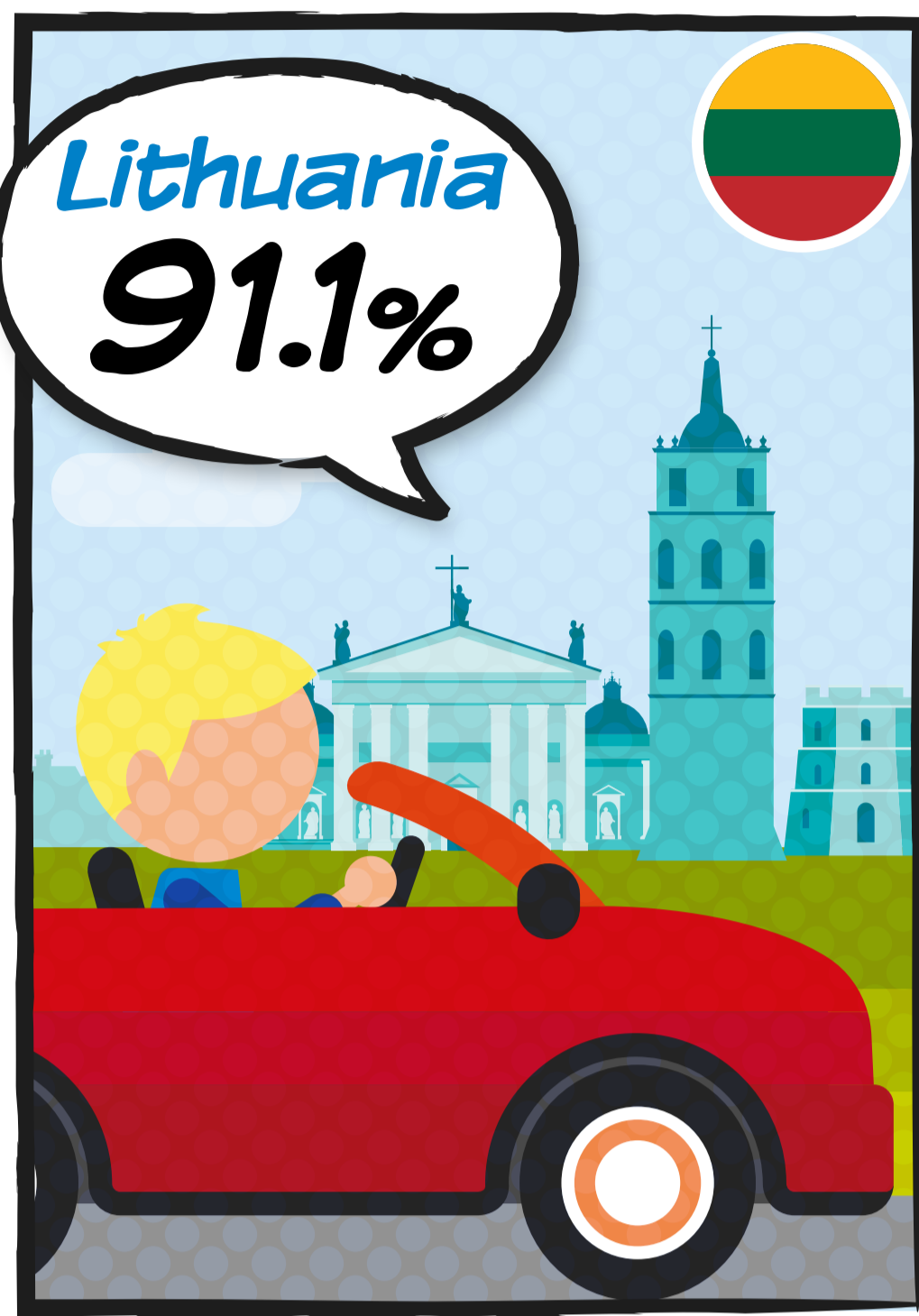


EU citizens on the move

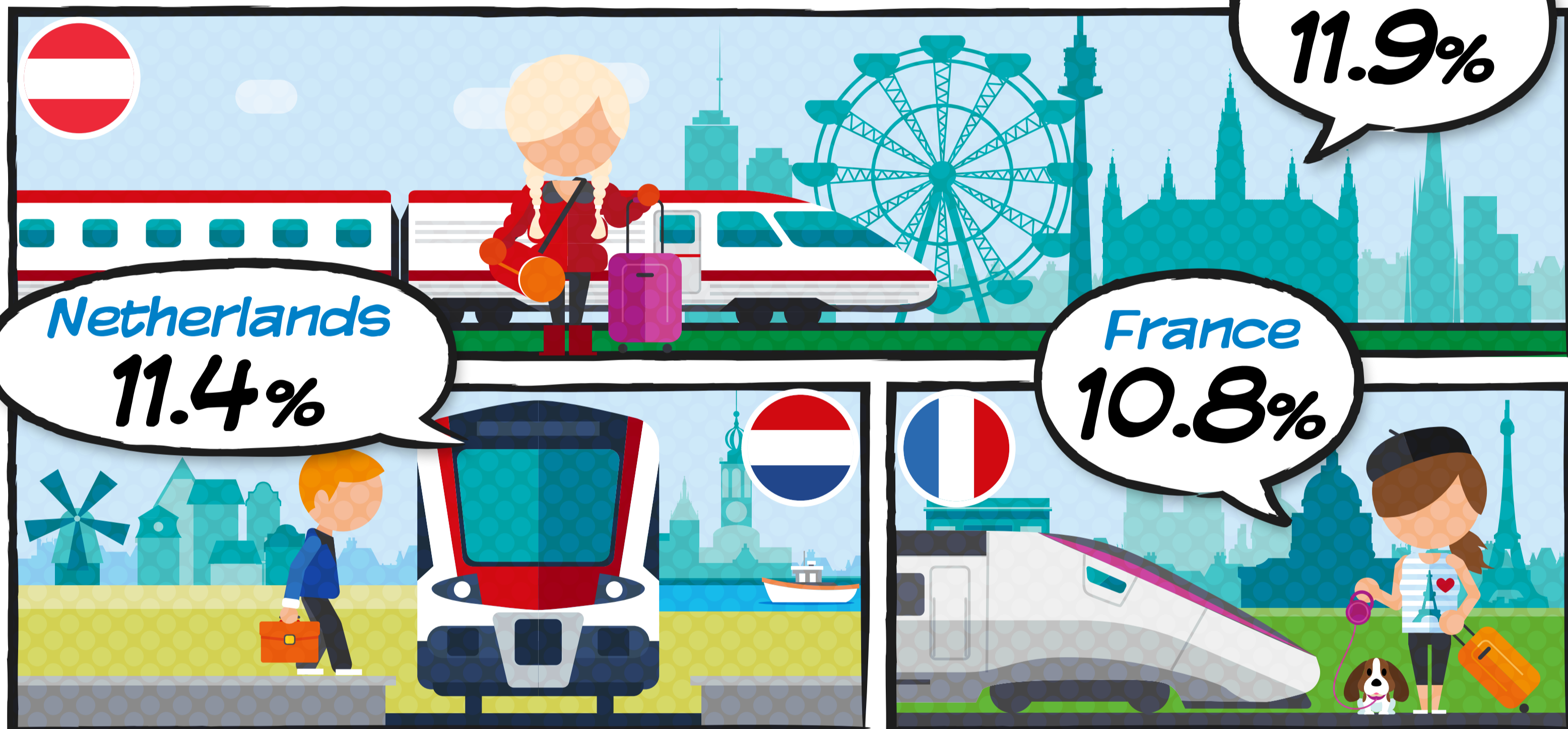
Top 3 countries

(% of total inland transport in passenger-km)

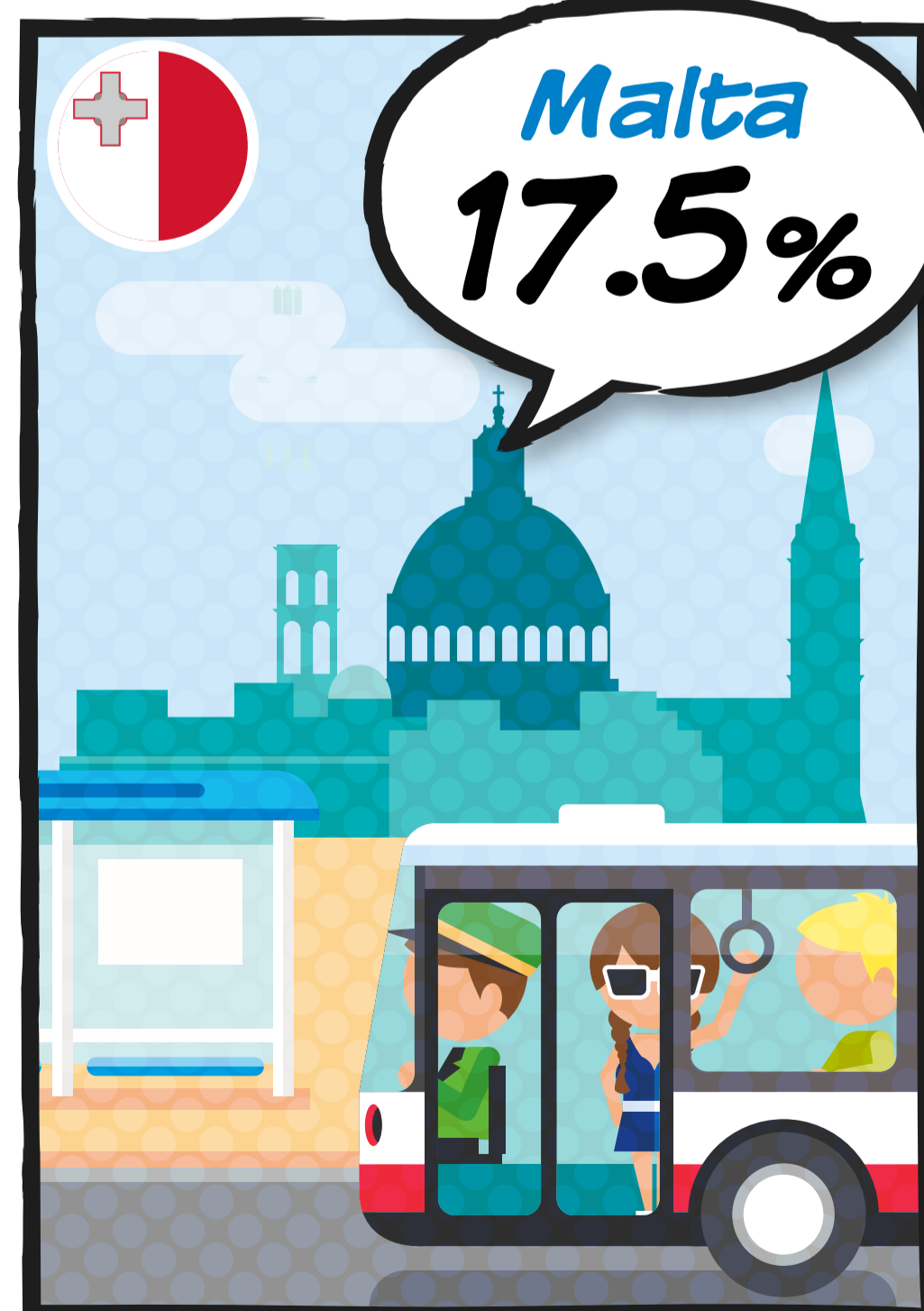
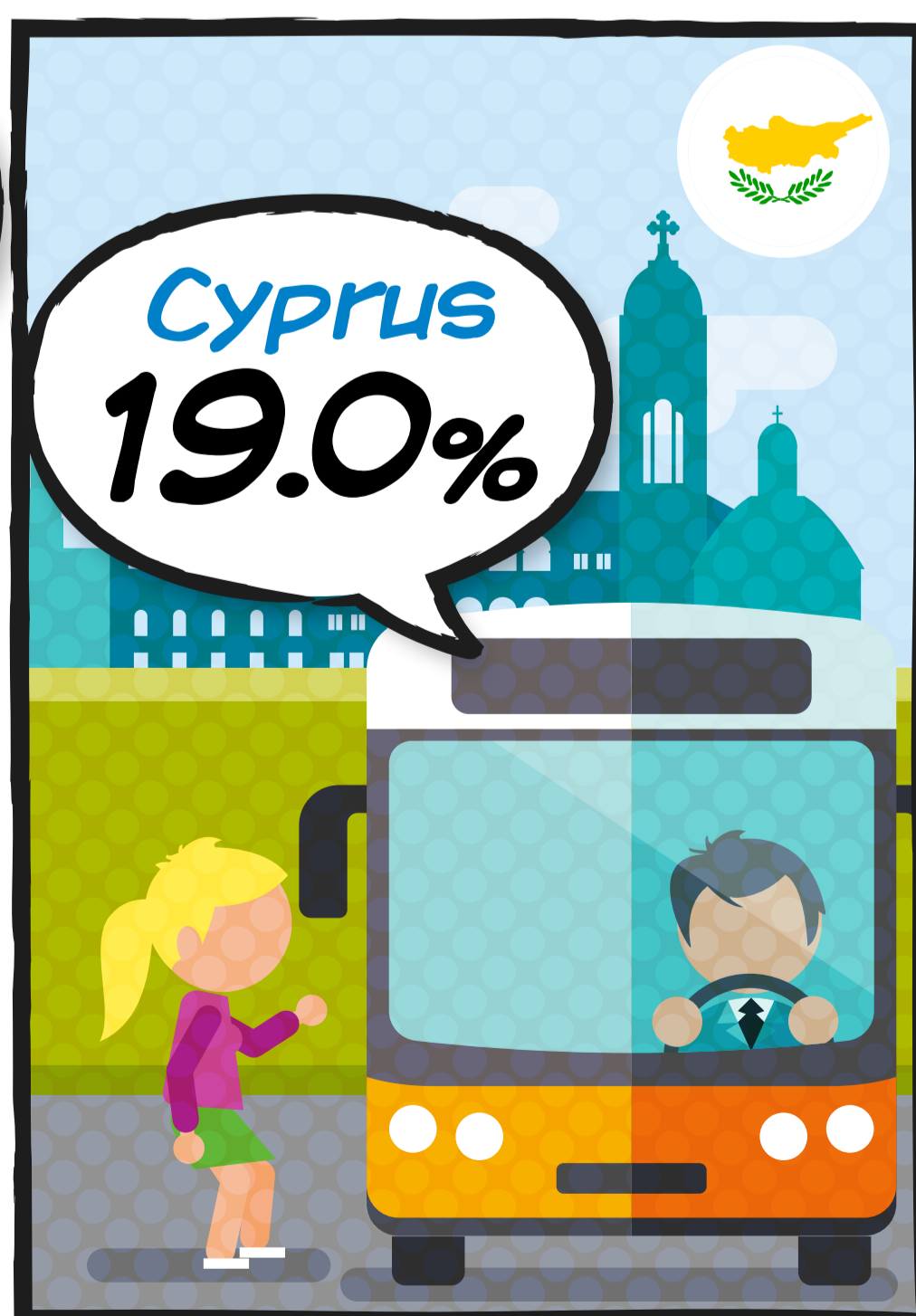
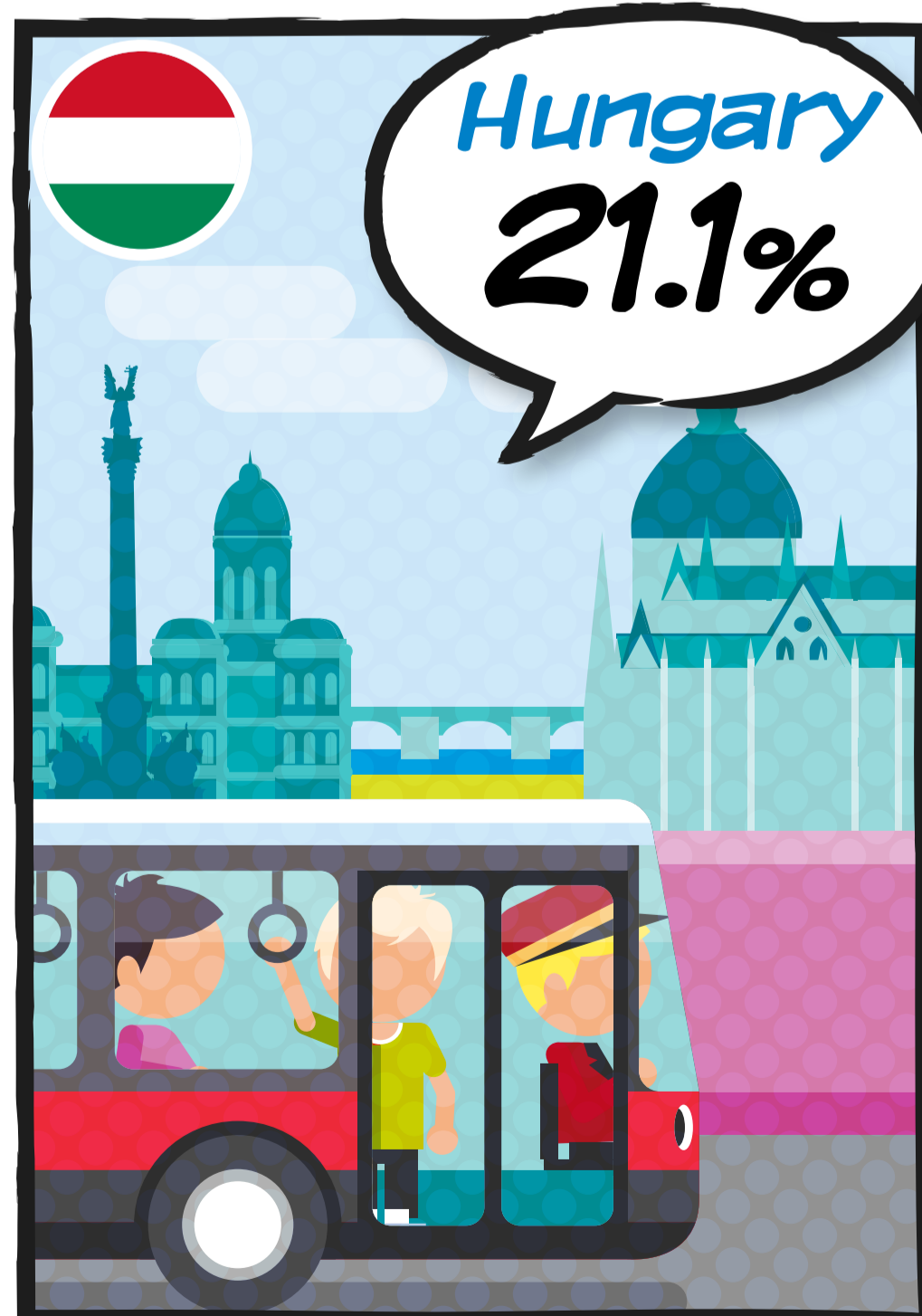
Travelling by car



Travelling by train



Travelling by bus, coach or trolley bus



Data are for 2017 and show, for each country, the percentage of total inland transport measured in passenger-kilometres. A passenger-kilometre is the unit of measurement representing the transport of one passenger by a defined mode of transport over one kilometre.

Source: Eurostat, Modal split of passenger transport [tran_hv_psmod](https://ec.europa.eu/eurostat/tgm/table.do?tab=table&init=1&language=en&code=tran_hv_psmod)

ec.europa.eu/eurostat