

The Netherlands in the EU



Share in EU area

1.1%
41 540 km²

Population density (per km²)
2013 data

498.4



116.4

NL

EU

Share in EU population

3.3%

16.9 million inhabitants

Share in EU GDP

4.7%



Overall life satisfaction

2013 data



GDP per capita

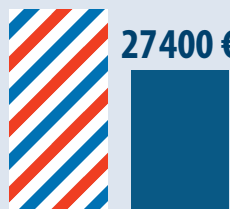
Life expectancy at birth

(Years – 2013 data)

81.4 80.6

39 300 €

27 400 €



NL

EU

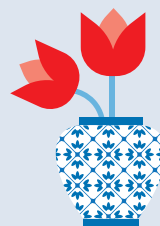


NL

EU

Did you know that...

Amsterdam/Schiphol is the 4th **busiest airport** in terms of passengers in the EU and handles the most passengers on intra-EU transport.



The Netherlands is the **biggest exporter of cut flowers** in the EU and the biggest producer of onions.



Among the EU Member States Dutch holiday-makers have the **highest share of tourism nights** spent in **campsites, caravan and trailer parks**.

Greenhouse gas emissions*

(percentage change 2013/1990)

NL -7.9%

EU -19.8%

* including international aviation

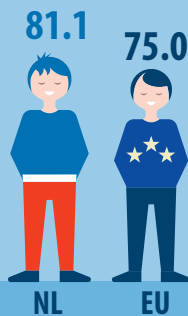


Half of Dutch employed persons (50.3%) work **part-time**; more than ¾ of women and ¼ of men work part-time.

The Netherlands has the **third highest share** of people employed in the **cultural sector** (3.9%) in the EU.

Employment rate men

(aged 20 to 64)



NL

EU

Employment rate women

(aged 20 to 64)



NL

EU

Hourly labour costs

34.0 €

24.6 €



NL

EU

The Netherlands in the EU

On the occasion of the Netherlands Presidency of the Council of the European Union (from 1 January 2016), Eurostat, the statistical office of the European Union, releases some indicators and infographics to show the Netherlands in comparison with the European Union.
(based on data for 2014)

January 2016

Indicator	Netherlands	EU	Notes
Economy			
Government surplus/deficit (% GDP)	-2.4	-3.0	
Government gross debt (% GDP)	68.2	86.8	
GDP per capita in PPS (EU = 100)	131	100	
Tax to GDP ratio	38.0	40.0	
Annual inflation rate	0.4	0.1	November 2015
Gross business investment rate	16.87	21.85	
Gross business profit share	41.09	39.31	
Gross household saving rate	14.84	10.49	
Population and social			
Share of population aged 65 or over	17.3	18.5	
Fertility rate (children per woman)	1.68	1.55	2013 data
Unemployment rate (total)	6.9	9.3	October 2015
Unemployment rate (less than 25 years)	11.6	20.0	October 2015
Risk-of-poverty or social exclusion (% of population)	16.5	24.4	
Participation in tourism for personal purposes (% of population)	82.2	61.1	EU aggregate 2012
Self-reported unmet needs for medical care due to being too expensive (% of population)	0.1	2.4	2013 data
Housing costs overburden (% of population)	15.4	11.4	
Education			
Tertiary educational attainment (% of persons aged 30-34)	44.8	37.9	
Early leavers from education (% of persons aged 18-24 years)	8.7	11.2	
Science and Technology			
R&D expenditure (% of GDP)	1.97	2.03	
Individuals having purchased online (% of persons aged 16 to 74)	71.0	53.0	
Environment and energy			
Recycling rate of municipal waste	49.8	42.8	2013 data
Share of renewables in final energy consumption	4.5	15.0	2013 data
Energy dependence (%)	26.0	53.2	2013 data

Issued by:
Eurostat Press Office
Tel: +352-4301-33 444
eurostat-pressoffice@ec.europa.eu

ec.europa.eu/eurostat

 @EU_Eurostat

Media requests:
Eurostat media support
Tel: +352-4301-33 408
eurostat-mediasupport@ec.europa.eu

