

MALTA

Popolazzjoni (1.1.2019)

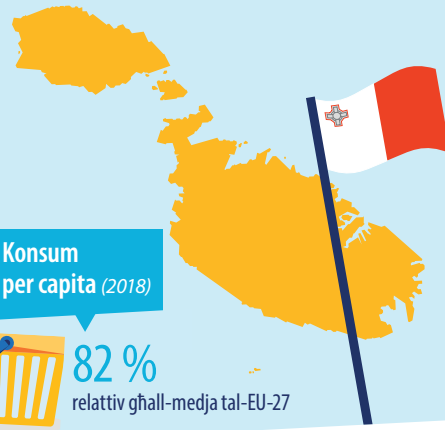
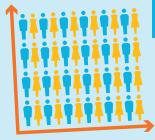
0.5 miljun
0.1% tat-total tal-EU-27

Densità tal-popolazzjoni (2018)

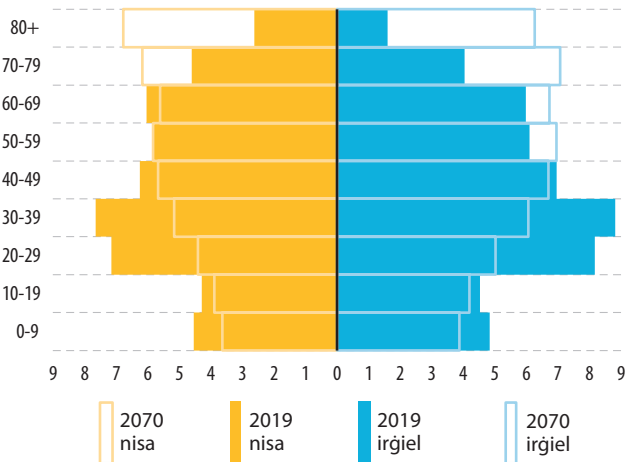
1 548
persuni ghal kull km²

Konsum per capita (2018)

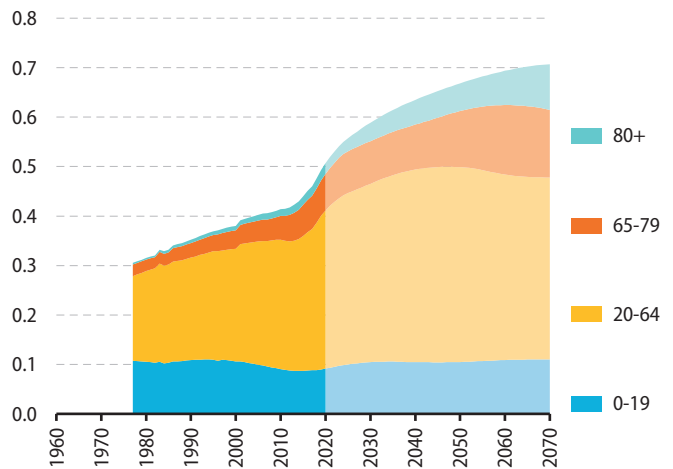
82%
relattiv għall-medja tal-EU-27



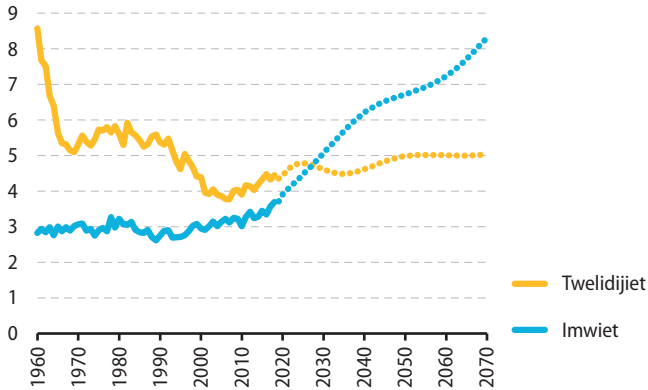
Piramidi tal-popolazzjoni, sehem tal-grupp ta' età mill-popolazzjoni totali (%)



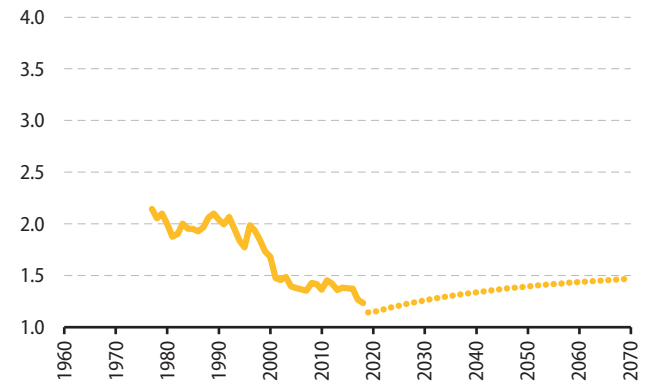
Struttura tal-età tal-popolazzjoni, gruppi ta' età (miljuni)



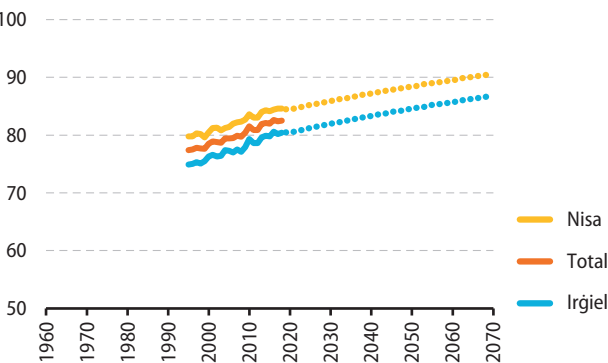
Twelidijiet u mwiet ('000s)



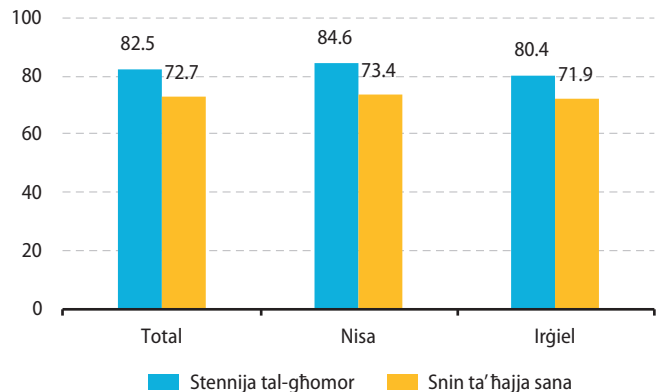
Rata tal-fertilità totali (twelidijiet għal kull mara)



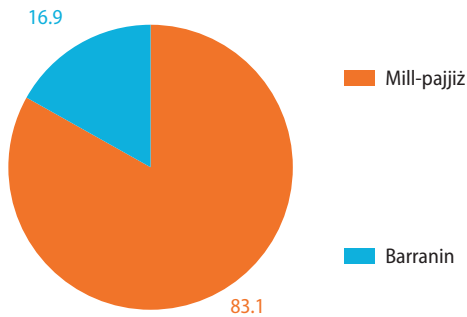
Stennija tal-ġhomor fit-twelid (snin)



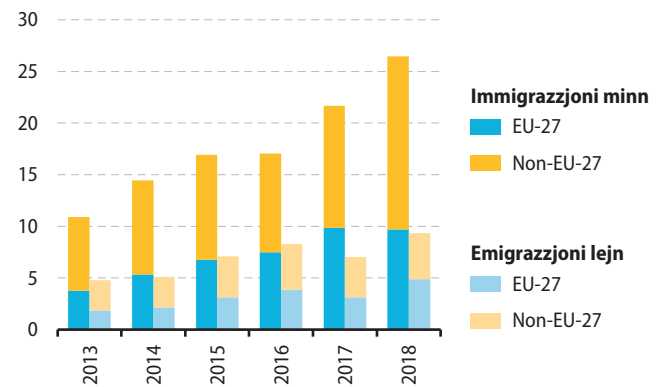
Stennija tal-ġhomor u s-snin ta' ħajja sana fit-twelid, 2018 (snin)



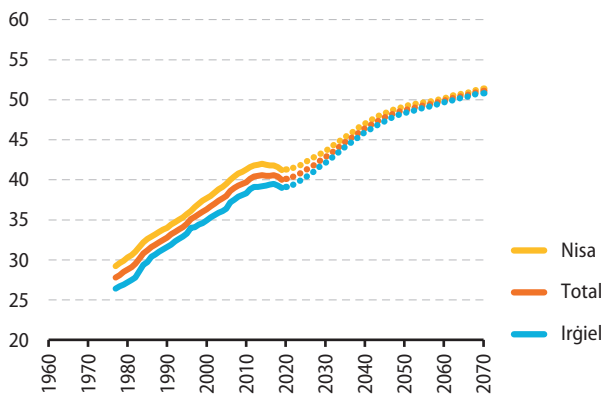
Popolazzjoni skont iċ-ċittadinanza, 2019 (%)



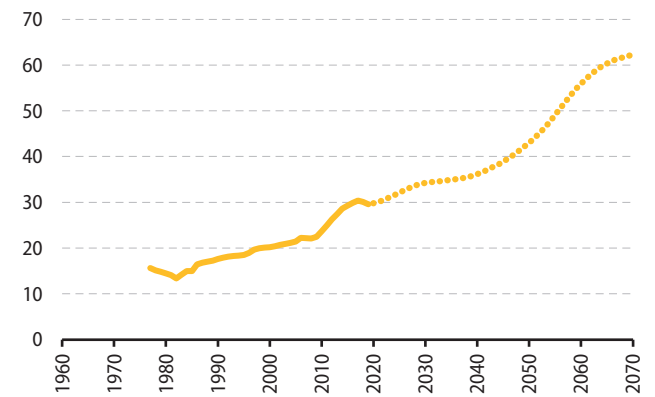
Immigrazzjoni u emigrazzjoni ('000s)



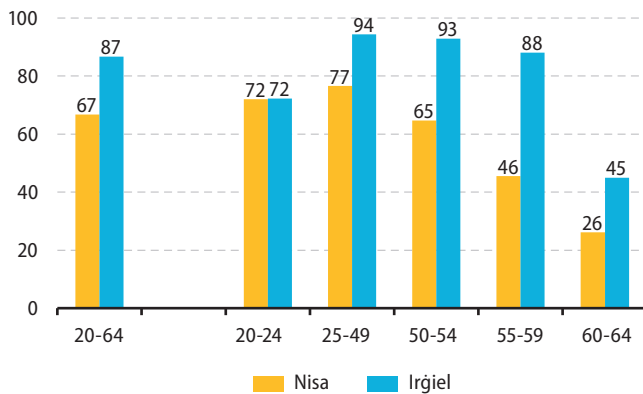
Età medjana (snin)



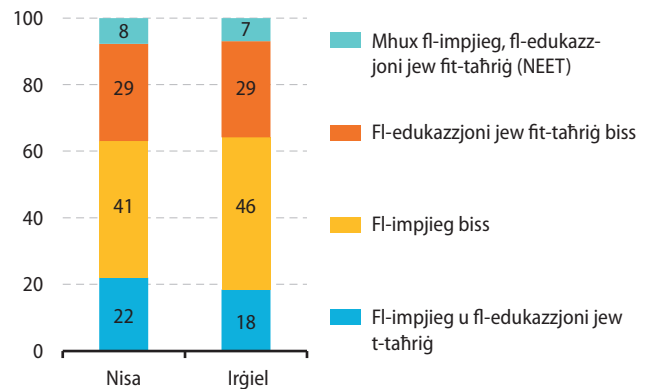
Proporzjon ta' dipendenza tax-xjuħija (%)



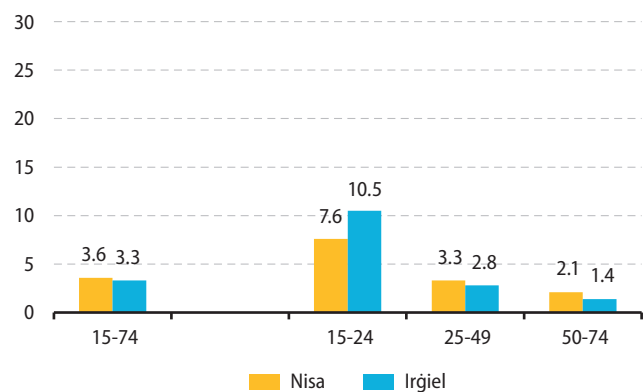
Rata tal-impjegji skont l-età u l-ġeneru, 2019 (%)



Status tal-edukazzjoni u tal-impjegji tal-adulti zgħażaġħ (18-24 sena), 2019 (%)



Rata tal-qgħad skont l-età u l-ġeneru, 2019 (%)



Rata tal-qgħad skont il-livell tal-edukazzjoni (15-74 sena), 2019 (%)

