

ESSnet on Data Collection for Social Surveys Using Multiple Modes (DCSS)



ESSnet Workshop Rome 2012

by Karen Blanke, Destatis Germany

Background and aims

- **Project initiated by Eurostat to support NSIs by:**
 - **Developing web data collection tools**
 - **Implementing and assessing the impacts of mixed mode data collection (CAPI, CATI, CAWI, PAPI) in social statistics**

- **Labor Force Survey (LFS) chosen as a concrete example**

- **Duration of the project: autumn 2012 – 2014**

- **Budget: 400.000 €grant (MBGA)**

- **Aims: Offering methodological guidance on CAWI and further harmonisation of MM data collection in the ESS**

-

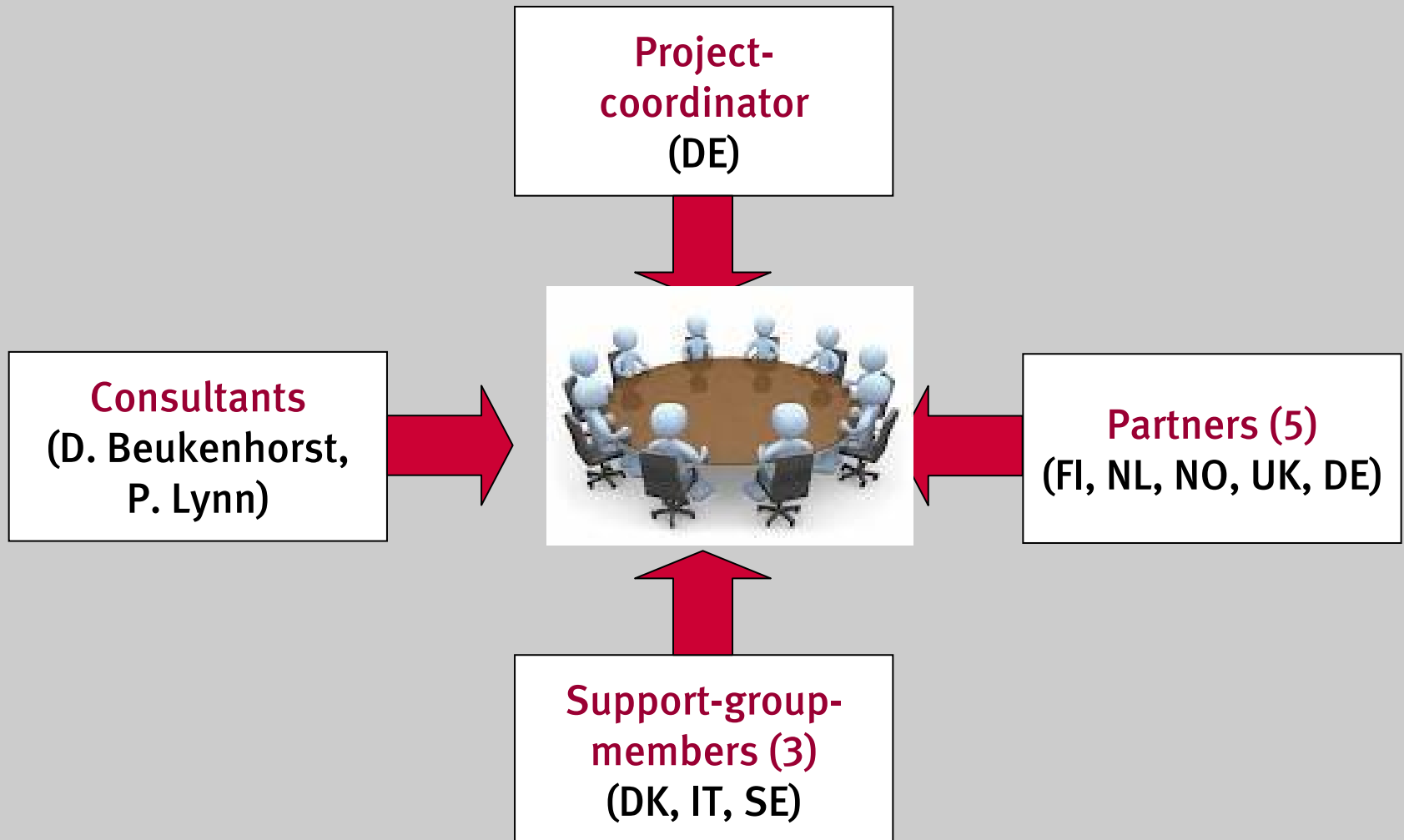
Outline

- **Background and aims**

- **Work packages**
 - **Management & Dissemination**
 - **Topics and tasks**



Members of the consortium



Work packages

- **WP I: Management**
- **WP II: Web data collection**
- **WP III: Multimode data collection**
- **WP IV: Dissemination**



WP I: Management

It is to ...

- **establish good communication within the consortium**
- **manage conflicts**
- **communicate with Eurostat**
- **organise effective meetings**
- **be responsible for dissemination**
- **safeguard time schedules and tasks**
- **deliver reports: Progress reports, intermediate & final reports**



WP II: Web data collection

CAWI questionnaires are ...

- self-administered instruments
- computerised
- distributed via the net
- rich on functionalities and layout

However, ...

- “A product by itself has no value, it has value only insofar as it is used”

(Dumas/Redish 1999)



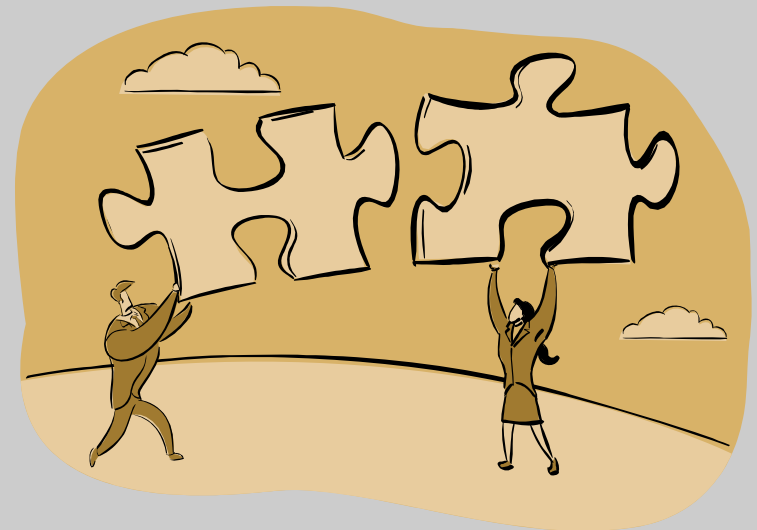
WP II: Web data collection

Objectives

- Review on LFS CAWI

- Common practice and experiences on CAWI instrument

- Technical features
 - Recommendations for future CAWI software tools



WP II: Web data collection

Three subtasks:

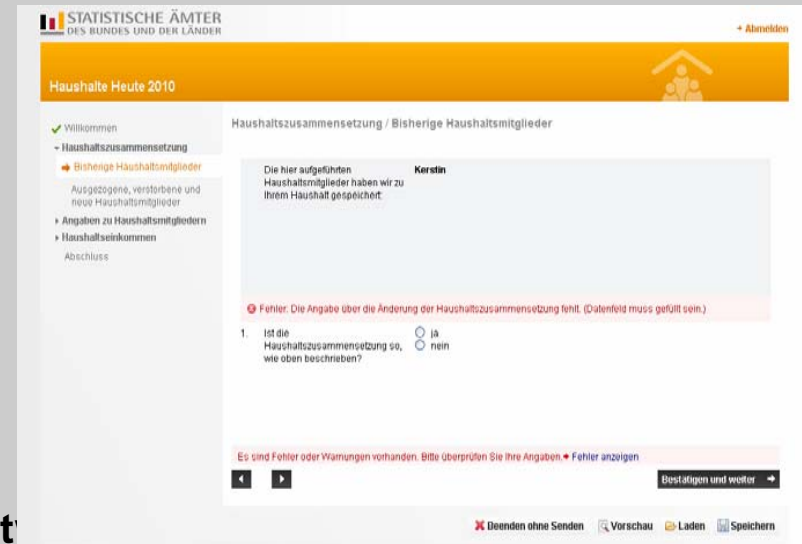
1. **Query** on the currently applied LFS CAWI instruments

2. **Development and testing** of LFS CAWI instruments

- Navigation
- Error checks
- Filter questions
- Instructions
- “Don’t know” options

3. **Technical features**

- To implement different CAWI soft
- To define a list of requirements on software tools



The screenshot shows a web form titled "Haushalte Heute 2010" from the "STATISTISCHE ÄMTER DES BUNDES UND DER LÄNDER". The form is in German and is for recording household composition. It includes a navigation menu on the left with options like "Willkommen", "Haushaltszusammensetzung", "Bisherige Haushaltsmitglieder", "Ausgezogene, verstorbene und neue Haushaltsmitglieder", "Angaben zu Haushaltsmitgliedern", "Haushaltseinkommen", and "Abschluss". The main content area is titled "Haushaltszusammensetzung / Bisherige Haushaltsmitglieder" and contains a text box for entering household members, with the name "Kerstin" already entered. Below the text box, there is a red error message: "Fehler: Die Angabe über die Änderung der Haushaltszusammensetzung fehlt. (Datenfeld muss gefüllt sein.)". A question follows: "1. Ist die Haushaltszusammensetzung so, wie oben beschrieben?" with radio buttons for "ja" and "nein". At the bottom, there is a "Bestätigen und weiter" button and a "Fehler anzeigen" link. The footer contains links for "Beenden ohne Senden", "Vorschau", "Laden", and "Speichern".

WP III: Multimode data collection

■ Objectives:

- **Multimode and the impact on the organisation of fieldwork and case-management and software requirements**
- **Increase knowledge of mode and selection effects within the LFS (especially for the main variables)**
- **Assess the possibilities for a harmonised approach of MM data collection for the LFS**
- **Recommend methodological activities to further harmonisation of MM data collection in the ESS**

WP III: Multimode data collection

- **Review** on the current use of multimode data collection with emphasis on the LFS: state-of-the-art, experiences, further strategies

- **Three sub tasks:**
 - **Organisation of multimode data collection:** e.g. fieldwork, case management, non-response, panel attrition, timeliness, costs, software, data confidentiality and security

 - **Measurement issues:** e.g. mode-effects: sensitive and less sensitive questions; unimode or mode-specific approaches, consecutive or concurrent implementation, selection effects

 - **Data processing, weighting and estimation**

WP IV: Dissemination

- **Addressing different target groups:**
 - Exchange of knowledge inside the consortium (using synergies)
 - Members of the entire ESS
 - International organisations/research community (other projects)

- **Using different channels to distribute results and proposals:**
 - ESSnet portal
(<http://www.essnet-portal.eu/data-collection-dcss>)
 - Conferences, workshops and working groups (e.g. UNECE, ISM, LAMAS, ESRA 2013, Q2014)
 - Final workshop

Thank you for your attention!

Karen Blanke (karen.blanke@destatis.de)

Federal Statistical Office of Germany (Destatis)