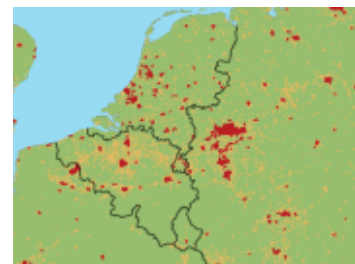


GEOPORTAL OF THE EUROPEAN COMMISSION (EUROSTAT)

High-density clusters, 2011, version 2 - Population distribution - Dataset



[Metadata](#) | [Metadata \(XML\)](#)

Title	High-density clusters, 2011, version 2 - Population distribution - Dataset
Date	2017-01-25
Date type	Publication
Abstract	This dataset contains high-density urban clusters, based on local population data of 2011. High-density clusters are defined as groups of contiguous raster cells of 1 square kilometre size, having a population density of at least 1 500 inhabitants per square kilometre and a total population of at least 50 000. The definition of high-density clusters underpins the degree of urbanisation classification of local administrative (LAU2) units and the definition of the Urban Audit cities. Data are available for EU countries (excluding the outermost regions of France and Portugal), Norway, Switzerland, Iceland and Serbia.
Unique resource identifier	{7D993DD7-E1F7-4ECF-8B0B-37A9E494CD10}
Metadata language	eng
Hierarchy level	Dataset

OnLine resource

Linkage	http://ec.europa.eu/eurostat/web/degree-of-urbanisation/overview
Linkage	http://ec.europa.eu/eurostat/web/gisco/geodata/reference-data/population-distribution-demography
Linkage	https://myintracomm.ec.europa.eu/dg/ESTAT/6-tools/GISCO/AccessGeographicalRef%20Database/Pages/AccessGeographicalRefDatabase.aspx

Point of contact

Organisation name	European Commission, Eurostat (ESTAT), GISCO
Role	Author
Topic category	Society

Keyword

Keyword	Population distribution — demography
Type	Theme
Keyword	urban population
Keyword	INSPIREGEOPORTAL

Keyword	urban population
---------	------------------

Extent

Geographic bounding box

West bound	-39.382
East bound	52.416
South bound	27.566
North bound	67.344

Spatial resolution

Distance	m
Distance	1000
Distance	m
Distance	1000

Lineage

Statement	The data are derived from population grid data supplied by NSIs to create a population grid. From this, High density clusters are calculated using a python geoprocessing script. 23/01/2017 - refinements undertaken to the script which generates the clusters by DG REGIO. A Python script is available from GISCO upon request.
-----------	---

Resource constraints

Use limitation	This dataset is publicly available and can be used for non commercial purposes. The source and intellectual property have always to be acknowledged for the original data and for any derived data. To this end, an acknowledgement as specified below must be visible on any printed or electronic publication using the data. Acknowledgement notice: Data source population grid information: Eurostat, EFGS.
File identifier	6908964d-4c02-411c-acd4-280bb9ea373d
Metadata language	eng

Metadata author

Organisation name	European Commission, Eurostat (ESTAT), GISCO
Role	Point of contact
Date stamp	2017-01-30T17:15:19