



ROMANIA

From waste to resources

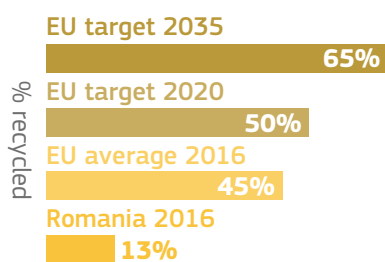
EU Member States, including Romania, can make further progress towards turning waste into a resource and building a circular economy by decreasing waste generation, increasing recycling and reducing landfilling. The EU has ambitious targets and new rules in place to make all Member States top performers in waste management. This will bring jobs, more sustainable growth and a cleaner environment with less marine litter.

How is Romania doing? The latest numbers

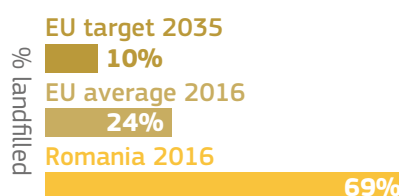
Total municipal waste generated in 2016 per person: **261 kg** (EU average: 483 kg)



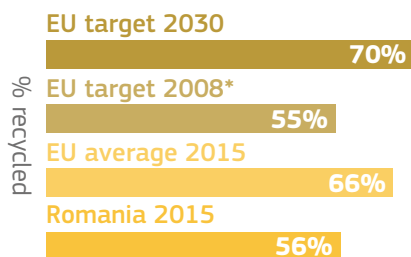
Municipal Waste Recycling



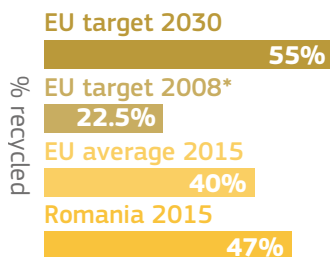
Municipal Waste Landfilling



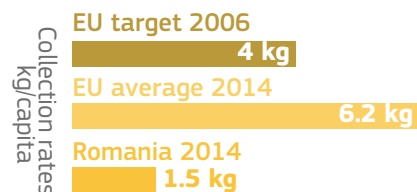
Packaging Waste Recycling



Plastic Packaging Waste Recycling

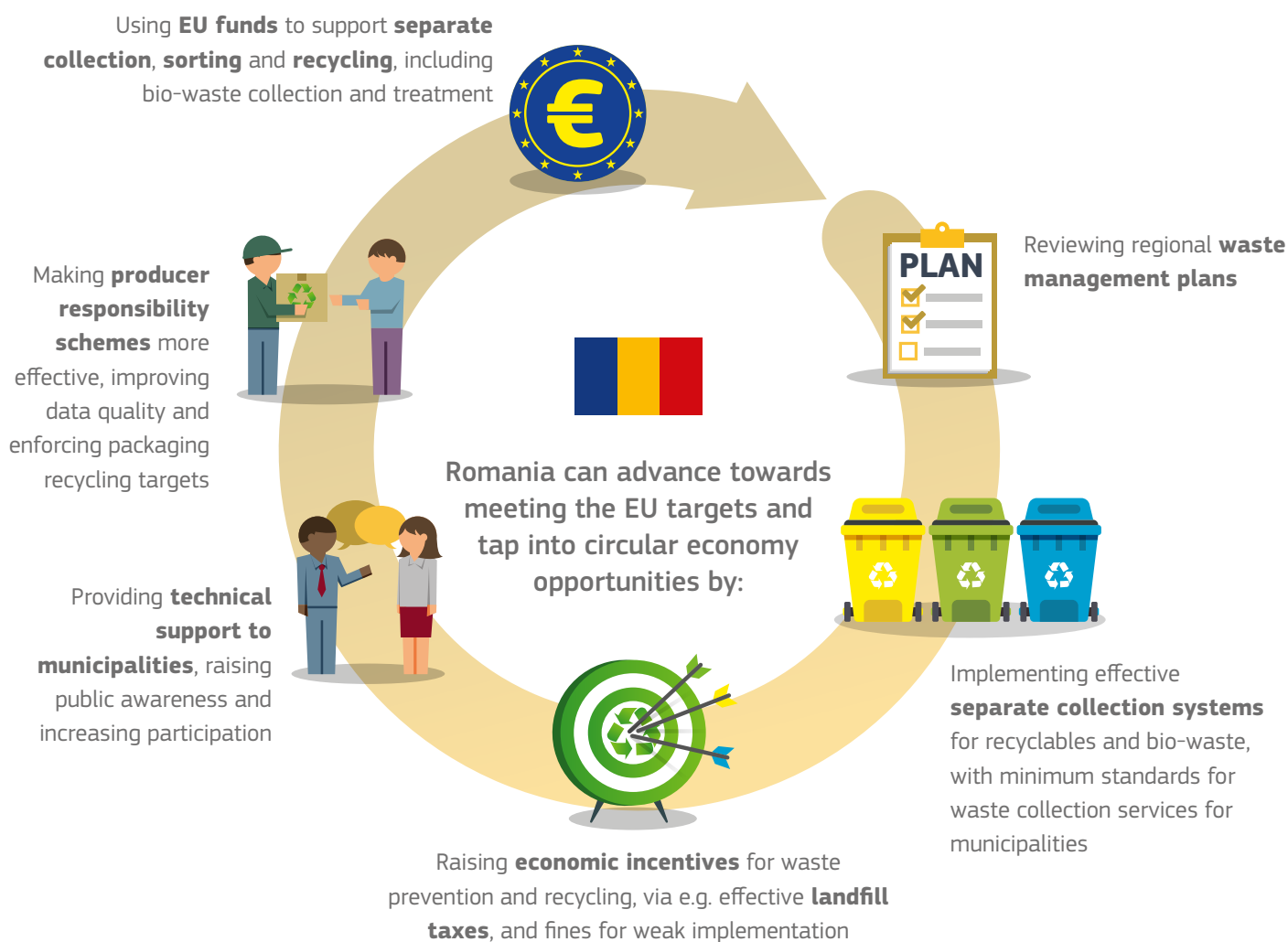


Waste Electrical and Electronic Equipment



* Romania was due to meet this target in 2013.

Steps to success



This factsheet is based on the early warning report for Romania, which is part of the European Commission's overall waste implementation report. It aims to help EU countries at risk of failing to meet the 2020 target of 50% for preparing for re-use and recycling of municipal waste; acknowledging the specific challenges faced by each of these countries. The statistics are from Eurostat.

EU waste policy: ec.europa.eu/environment/waste/index.htm

EU early warning reports on waste: ec.europa.eu/environment/waste/framework/early_warning.htm

[#WasteToResource](#) [#CircularEconomy](#)



[EU_ENV](#)



[EUEnvironment](#)



Publications Office

Print

ISBN 978-92-79-95876-2

doi:10.2779/54474

KH-06-18-144-EN-C

PDF

ISBN 978-92-79-95873-1

doi:10.2779/7143

KH-06-18-144-EN-N