

# Biodiversity protection under RDP 2014–2020 in Poland

**ENRD Workshop  
„Agriculture and Environment”  
November 2019**

Magdalena Nowicka

Poland



# Main measures

- M04. Investments in agricultural holdings in Natura 2000 areas
- M13. Payments for areas with natural or other specific restrictions (LFA payment)
- **M10. Agri-environment-climate measure (AECM)**

## **AECM packages:**

- 1. Sustainable farming
- 2. Protection of soil and water
- 3. Preservation of orchards of traditional varieties of fruit trees
- **4. Valuable habitats and endangered birds species in the Natura 2000 areas**
- **5. Valuable habitats outside the Natura 2000 areas**
- 6. Preservation of endangered plant genetic resources in agriculture
- 7. Preservation of endangered animal genetic resources in agriculture



# “Biodiversity packages”

<p><b>Package 4.</b></p> <p><b>Valuable habitats and endangered birds species in the Natura 2000 areas</b></p>	<p><b>Protection of natural habitats:</b></p>
	4.1. Variably wet Molinion litter meadows
	4.2. Alluvial Cnidion meadows and salt marshes
	4.3. Dry grasslands
	4.4. Semi-natural wet meadows
	4.5. Semi-natural mesic meadows
	4.6. Peat bogs
	<p><b>Protection of breeding habitats of birds:</b></p>
	4.7. Extensive use of grasslands in Special Protection Areas
	4.8. Protection of breeding habitats of black-tailed godwit, common snipe, common redshank, lapwing
	4.9. Protection of breeding habitats of aquatic warbler
4.10. Protection of breeding habitats of great snipe, eurasian curlew	
4.11. Protection of breeding habitats of corncrake	
<p><b>Package 5.</b></p> <p><b>Valuable habitats outside the Natura 2000 areas</b></p>	<p><b>Protection of natural habitats:</b></p>
	5.1. Variably wet Molinion litter meadows
	5.2. Alluvial Cnidion meadows and salt marshes
	5.3. Dry grasslands
	5.4. Semi-natural wet meadows
	5.5. Semi-natural mesic meadows
5.6. Peat bogs	



## Examples of habitat variants with Natura 2000 sites



### 4.1. Variably wet Molinion litter meadows

6410 Molinia meadows

*Photo: A. Szczepaniuk*



### 4.2. Alluvial Cnidion meadows and salt marshes

6440 Alluvial meadows

1330 Atlantic salt meadows

1310 Salicornia

1340 Inland salt meadows

*Photo: A. Kazuń*



## Examples of habitat variants with Natura 2000 sites



### 4.3. Dry grasslands

6120 Xeric sand calcareous grasslands

6210 Semi-natural dry grasslands

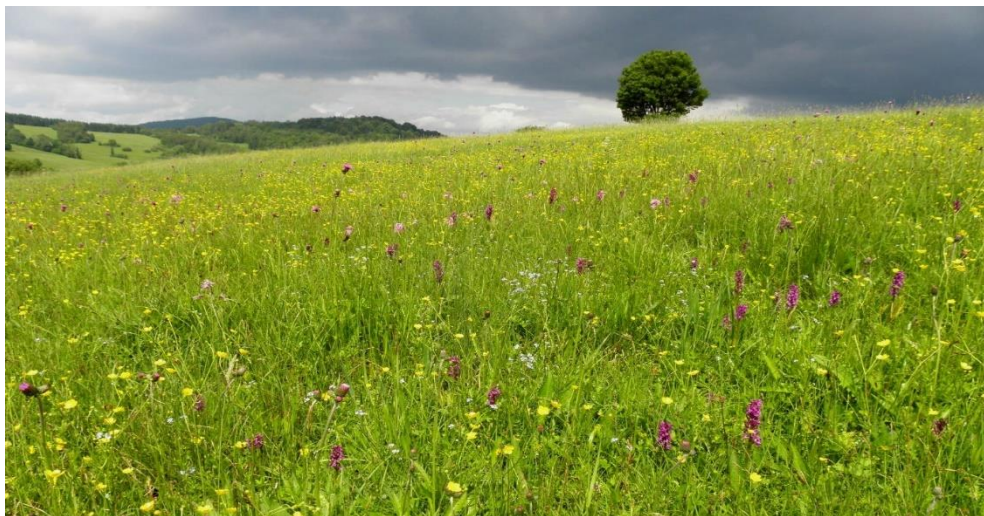
6230 Species-rich *Nardus* grasslands

2230 *Malcolmietalia* dune grasslands

5130 *Juniperus communis* formations

4030 European dry heaths

*Photo: Ł. Krajewski*



### 4.4. Semi-natural wet meadows

*Photo: A. Kazuń*



## Examples of habitat variants with Natura 2000 sites



### 4.5. Semi-natural mesic meadows

6510 Lowland hay meadows

6520 Mountain hay meadows

*Photo: A. Szczepaniuk*



### 4.6. Peat bogs

7110 Active raised bogs

7120 Degraded raised bogs

7140 Transition mires and quaking bogs

7210 Calcareous fens

7230 Alkaline fens

4010 Northern Atlantic wet heaths

7220 Petrifying springs

*Photo: A. Kazuń*



## Bird variants - Natura 2000 sites



### 4.7. Extensive use of grasslands in Special Protection Areas

*Photo: P. Szatański*



### 4.8. Protection of breeding habitats of black-tailed godwit

A156 *Limosa limosa*

*Photo: M. Jobda*



## Bird variants - Natura 2000 sites



### 4.8. Protection of breeding habitats of common snipe

A153 Gallinago gallinago

*Photo: M. Jobda*



### 4.8. Protection of breeding habitats of common redshank

A162 Tringa totanus

*Photo: M. Jobda*





## Bird variants - Natura 2000 sites



### 4.8. Protection of breeding habitats of lapwing

A142 Vanellus vanellus

*Photo: P. Szalański*



### 4.9. Protection of hatching habitats of aquatic warbler

A294 Acrocephalus paludicola

*Photo: P. Szalański*



## Bird variants - Natura 2000 sites



### 4.10. Protection of breeding habitats of great snipe

A154 Gallinago media

*Photo: M. Matysiak*



### 4.10. Protection of breeding habitats of eurAsian curlew

A160 (Numenius arquata)

*Photo: M. Jobda*



## Bird variants - Natura 2000 sites



### 4.11. Protection of breeding habitats of corncrake

A122 Crex crex

Photo: P. Szałański



## Implementation of „biodiversity packages” (Package 4. i 5.)

- Habitats / Birds documentation - expert (ornitologist or botanist involved)
- Agri-environmental plan – adviser involved
- Requirements: mowing, extensive grazing on dates adapted to the needs of a particular habitat /species and farm



# Planned and estimated effects

- **Agri-environment-climate measure**
  - Total budget – 1 367 mln EUR
  - Total area supported – 1,8 mln ha
- **Package 4. Valuable habitats and endangered birds species in the Natura 2000 areas**
  - Total expenditure - 364 mln EUR
  - Supported area - 392 000 ha
- **Package 5. Valuable habitats outside the Natura 2000 areas (including ongoing commitments under RDP 2007-2013)**
  - Total expenditure - 295 mln EUR
  - Supported area - 363 000 ha



# Thank you for your attention!

