



Supporting farm competitiveness

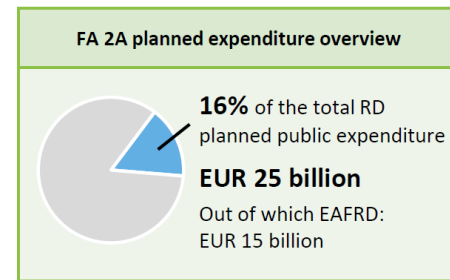
Lessons learnt from the implementation of rural development programmes

Jose Manuel Hernandez Luque
Unit F.1 Conception and Consistency of Rural Development
DG Agriculture and Rural Development

EAFRD priorities

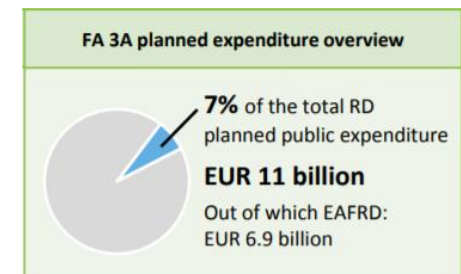
- Priority 2: enhancing farm viability and competitiveness

- Focus Area 2A: improving **economic performance** and facilitating farm **restructuring** and **modernisation**



- Priority 3: promoting food chain organisation & risk management

- Focus Area 3A: improving **competitiveness** of primary producers by better integrating them into the agri-food chain

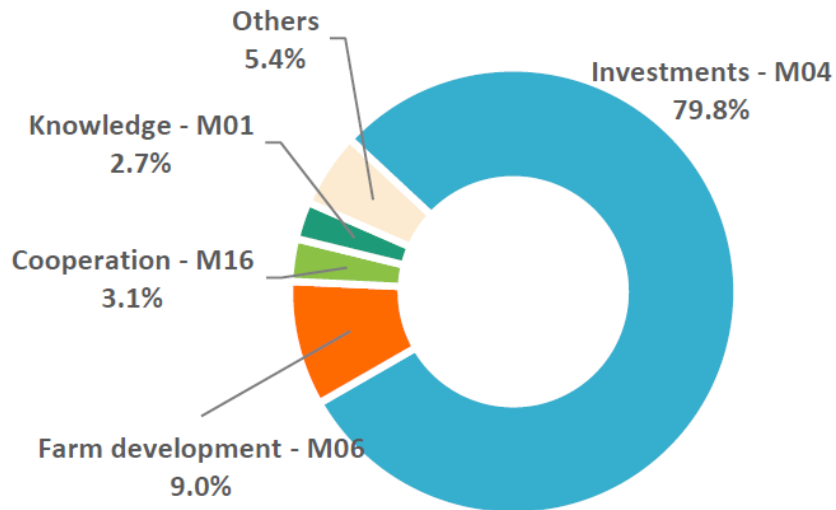


EAFRD measures

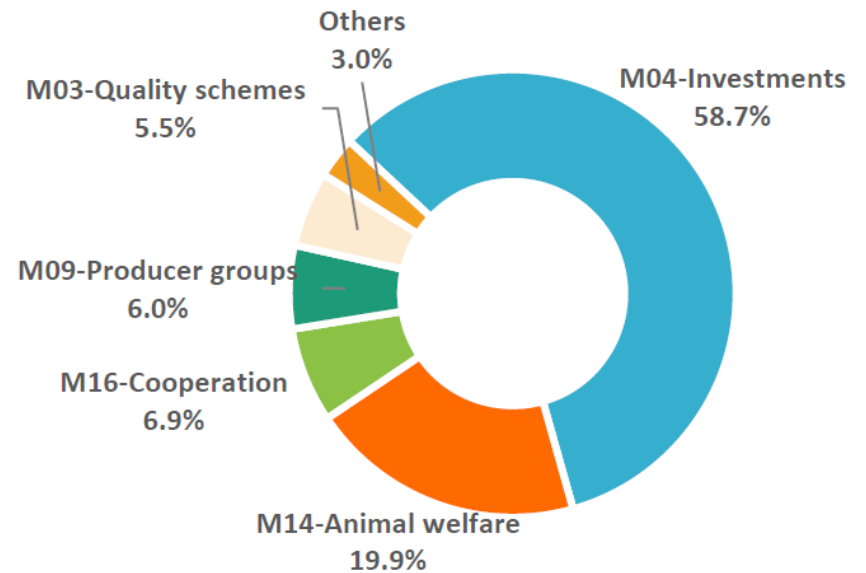
- Investments
- Knowledge transfer and information actions
- Advisory services and farm relief services
- Cooperation
- Farm development
- Quality schemes
- Producer organisations
- Risk Management
- Start-up aid for non-agricultural activities
- Basic services in rural areas

EAFRD measures

Planned public expenditure on Focus Area 2A per measure
(% of the FA planned public expenditure)



Planned public expenditure on Focus Area 3A per measure
(% of the FA planned public expenditure)



Source: ENRD FA summaries

Expected achievements

Focus area 2A



335 000 agricultural holdings supported for restructuring and modernisation



2.8 % of EU agricultural holdings supported for restructuring and modernisation



47.2 billion EUR (public and private) of investment realised for enhancing the competitiveness of farming businesses



16 % of the planned total public expenditure is allocated to Focus Area 2A

Focus area 3A



300 000 agricultural holdings supported for participating in quality schemes, local markets and short supply circuits.



2.6 % of EU agricultural holdings supported for participating in quality schemes, local markets and short supply circuits.



16.8 billion EUR (public and private) of investment realised for participating in quality schemes, local markets and short supply circuits.



7 % of the planned total public expenditure is allocated to Focus Area 3A

State of play

Focus area 2A



82 000 agricultural holdings supported
(25 % of the target)



0.6 % of agricultural holdings supported
(25 % of the target)



9.6 billion EUR (public and private) of investment realized
for enhancing the competitiveness of
farming business (20 % of target)

Focus area 3A



37 500 agricultural holdings supported
(15 % of the target)



0.3 % of agricultural holdings supported
(15 % of the target)



2.5 billion EUR (public and private) of investment realized
for enhancing the competitiveness of
farming business (15 % of target)

State of play

Focus Area	Total Public amount in the Financing plan	Total Public declared amount	Execution rate %
2A	23.548.671.270	7.453.194.171	31,7%
2B	6.649.657.506	2.537.888.324	38,2%
2C+	415.559.923	126.510.033	30,4%
P2	30.613.888.699	10.117.592.527	33,0%
3A	11.080.023.229	3.343.738.051	30,2%
3B	4.080.656.100	1.532.047.908	37,5%
3C+	203.076.301	31.815.194	15,7%
P3	15.363.755.630	4.907.601.153	31,9%
P4	68.543.457.489	36.874.844.512	53,8%
5A	3.061.202.165	483.110.932	15,8%
5B	1.011.201.027	193.822.299	19,2%
5C	1.136.911.548	174.453.338	15,3%
5D	1.617.882.988	704.664.199	43,6%
5E	3.593.844.945	1.208.025.414	33,6%
5F+	42.081.421	9.997.402	23,8%
P5	10.463.124.093	2.774.073.585	26,5%
6A	3.775.686.173	778.761.367	20,6%
6B	16.611.040.647	4.097.541.374	24,7%
6C	1.914.896.702	337.497.556	17,6%
P6	22.301.623.523	5.213.800.297	23,4%
DM/ TA	4.126.400.103	1.518.944.161	36,8%
TOTAL	151.412.249.537	61.406.856.236	40,6%

Source: expenditure declared by MS by 31/05/2019

Lessons learnt from implementation of RDPs 2014-2020

- Investment support is an important measure
- Importance of targeting
- Combining investment support with training and advice is not always easy
- Supported investments must be sustainable
- Reasonableness of costs deserves some attention
- Possible deadweight effects should be avoided

Lessons learnt from implementation of RDPs 2007-2013

- Important positive effects of investment support in farm competitiveness
- Training actions have a positive impact
- Young farmers bring new ideas and triggered modernisation processes
- Advice improves management and agricultural practices, although services offered were not always attractive for farmers

Thank you for your attention

More information available here:

https://ec.europa.eu/agriculture/rural-development-2014-2020_en

https://enrd.ec.europa.eu/policy-in-action/rural-development-policy-figures/priority-focus-area-summaries_en