




# RDP-Support and Natura 2000: the Bavarian approach



**Wolfram GÜthler**  
Head of Unit – Financing nature and landscape conservation  
Bavarian State Ministry of the Environment and Consumer Protection

# Natura 2000 in Bavaria

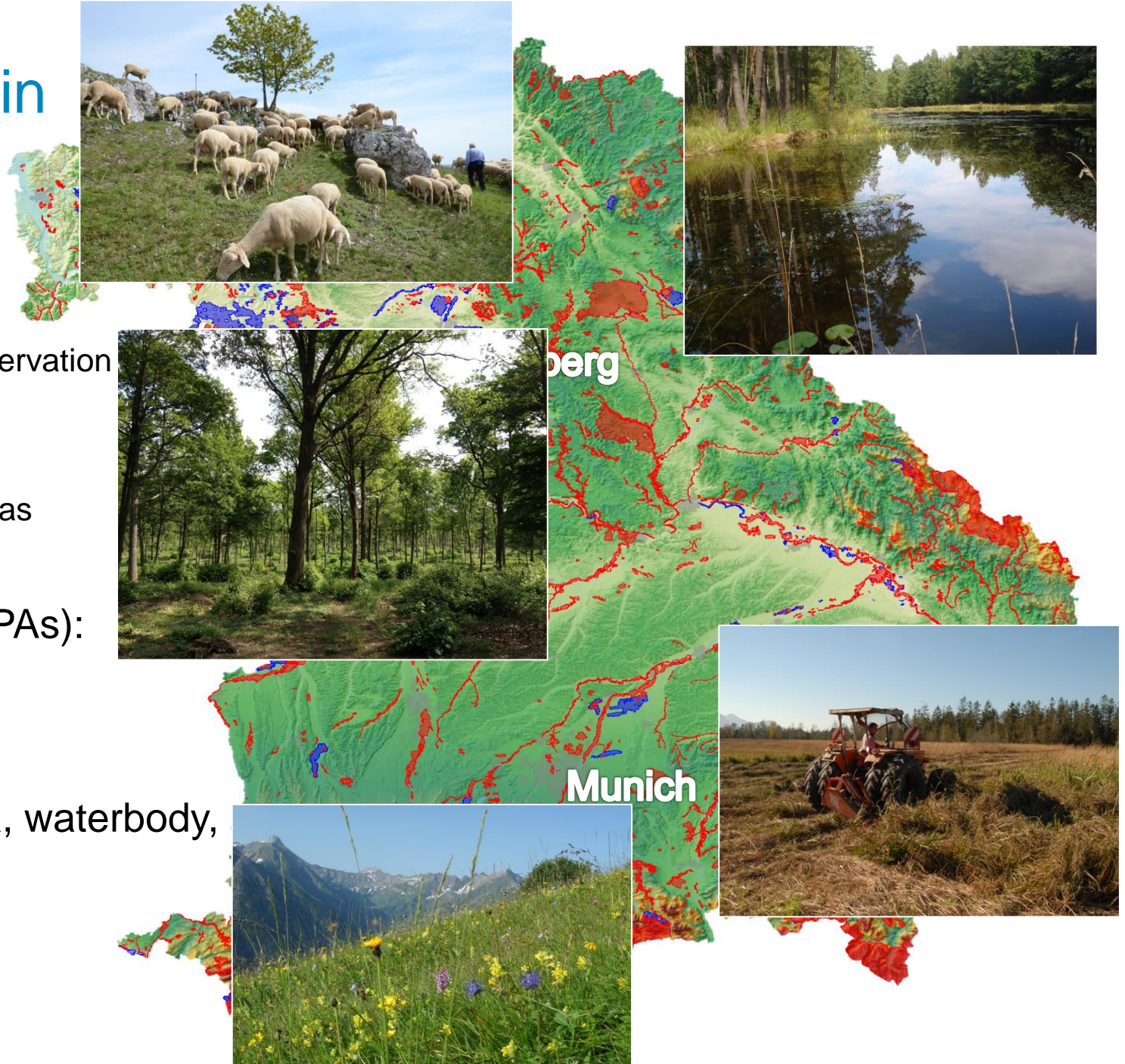


 (SACs)  
Special Areas of Conservation

 (SPAs)  
Special Protection Areas

total area (SACs + SPAs):  
800.000 ha

56% woodland  
44% agricultural area, waterbody,  
etc.





## Required Measures and EU-Money

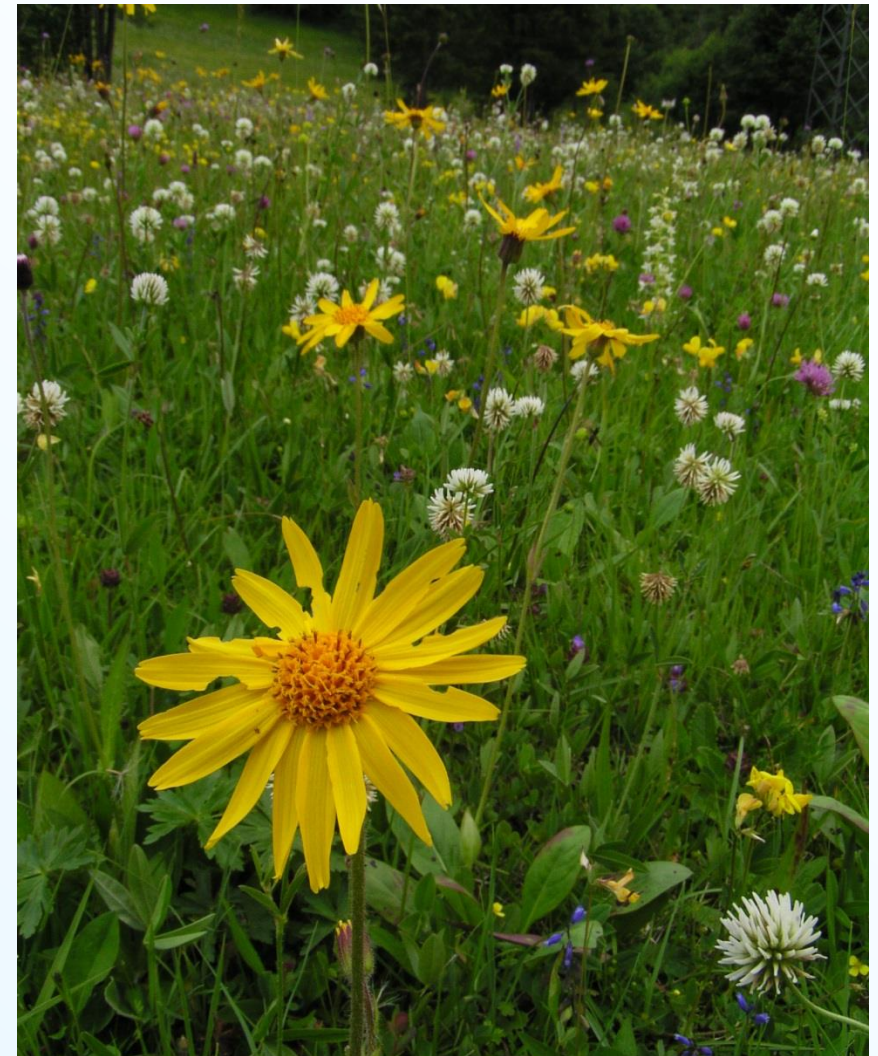
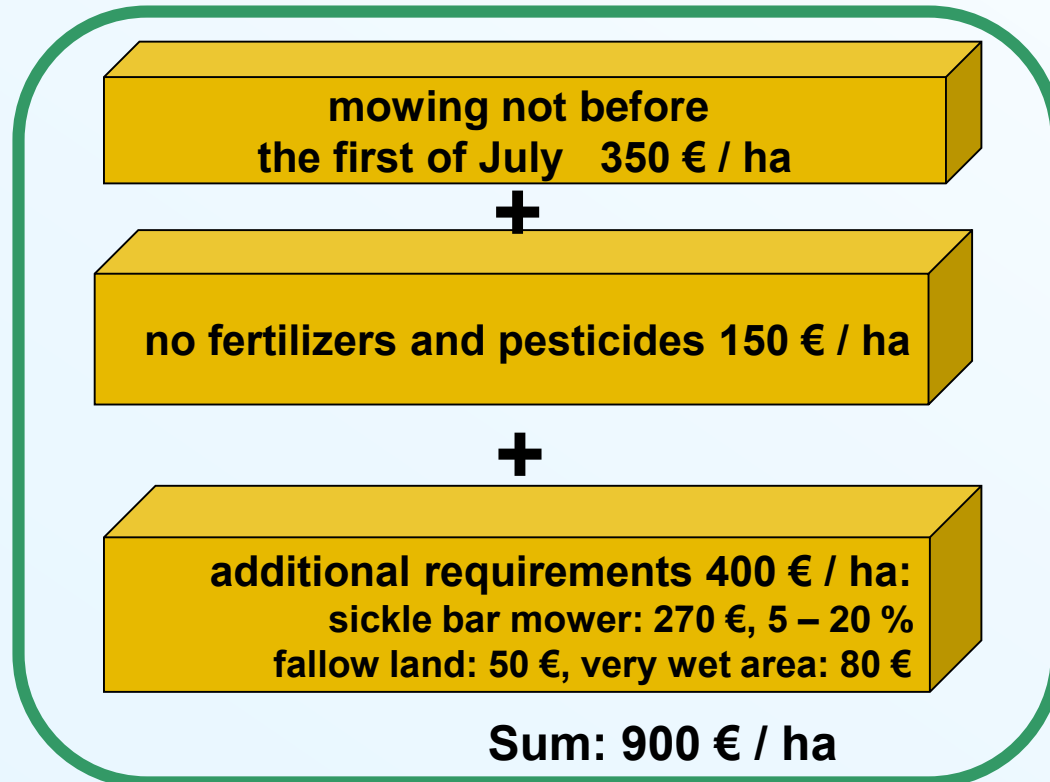
- Bavarian Conservation Programme  
**dark green Agri-environment-climate Measure -> mainly with RDP-Support**
- Bavarian Conservation Programme for forests  
**No RDP-Support (Bureaucracy, Cross Compliance, ...)**
- Investment Measures  
**No RDP-Support (Bureaucracy, Selection criteria for operations, ...)**
- Consulting, Planning, Public Relations, Monitoring, Evaluation  
**No RDP-Support (Bureaucracy, partly not eligible)**





## Bavarian Conservation Programmes

Modular system: you can combine about  
50 different measures, e.g.:





# Bavarian Conservation Programmes

Modular system: you can combine about  
50 different measures:

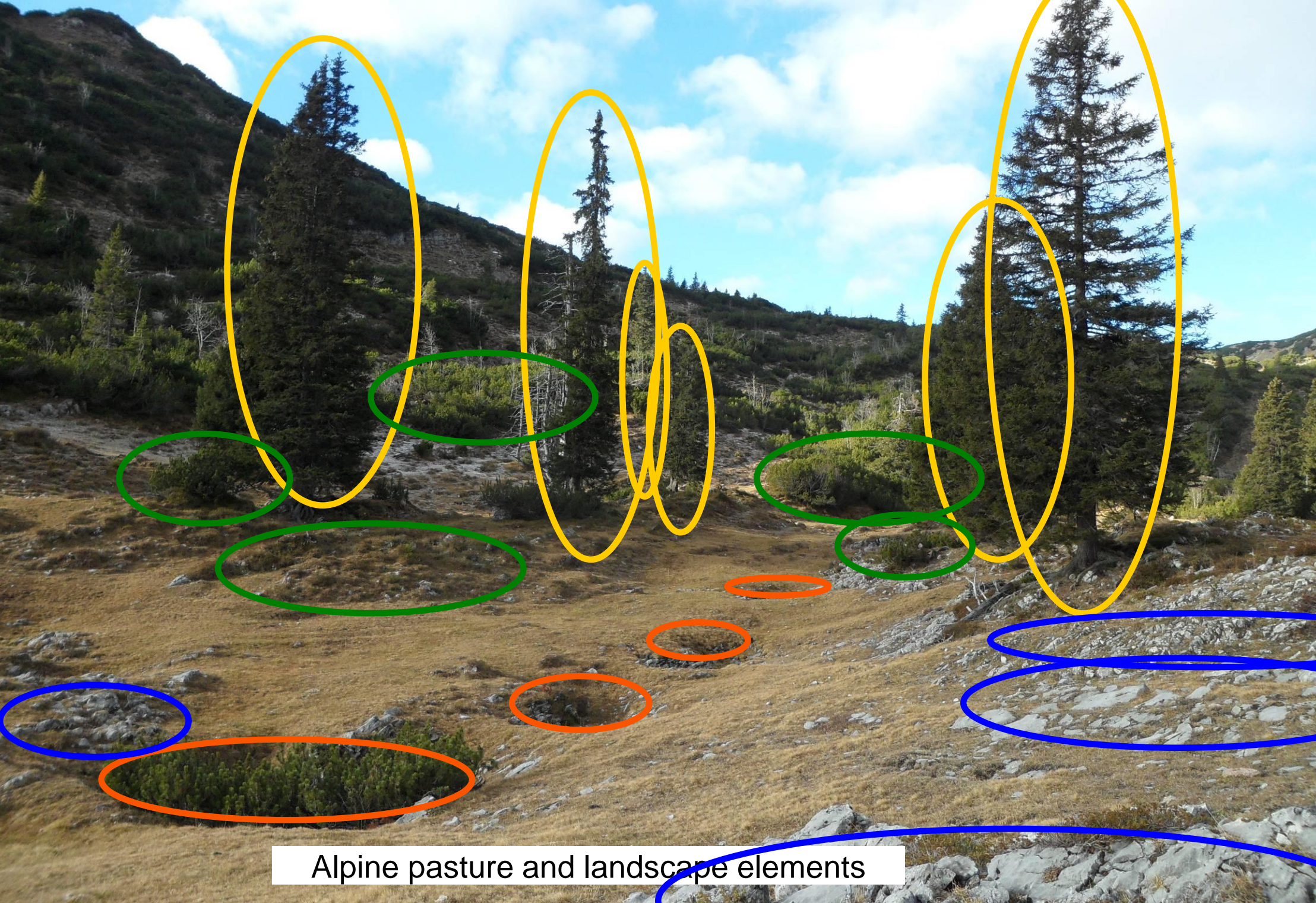


## advantage

- Very targeted to Natura habitats and species etc.
- Proven effectiveness
- Obligatory counseling interview by nature conservation authorities
- High acceptance: more than 18.000 farmers; 41 Mio. € annual premiums

## disadvantage

- EU-Commission wants simple measures
- Controllability and verifiability are more difficult, some important measures have to be implemented in national programmes



Alpine pasture and landscape elements



## Involvement of stakeholders in the Bavarian Conservation Programme

- More than 20 workshops with farmers and ecologists whilst program planning
- regular meetings with representatives of farmer associations, shepherds, mountain farmers
- obligatory counselling interviews with participants by authorities of nature conservation (at least every 5 years)





## Bavarian Conservation Programme in forests

- Started in 2005, co-funded by EU until 2013:  
little acceptance by forest-holders, hardly ecologically efficient (only 5 years commitment period)
- Withdrawal from co-funding in 2015 essential for implementation of Natura 2000, demand increasing (2017: approx. 4.5 million €) ,  
especially for biotope tree measure (one-off payment for 12 years)
- less bureaucracy:
  - no submission to the cross-compliance system, no annual payments order
- more efficiency:
  - deadwood, biotope trees and non utilization with 12 years commitment period, no detailed determination for forest parcels







## Conclusion

- Targeted, dark green Agri-environment-climate Measures are a very good option (and challenge) to implement Natura 2000 with farmers
- Forest: implementation of ecologically reasonable measures hardly possible due to EU-restrictions

→ need for change!

Policy paper about Financing Natura 2000:

<https://www.lpv.de/themen/agrar-und-regional-politik/agrarreform.html>

-> integration strategy to implement Natura 2000 not successful (common position of the nature conservation administrations in Germany)





**Thank you very  
much for your  
attention!**