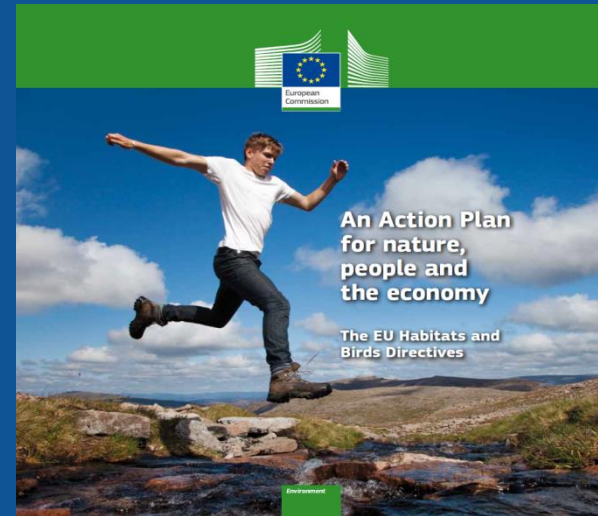




European  
Commission

# The Birds and Habitats Directive and the Nature Action Plan



**ENRD Workshop, 28/09/2017**  
**Jérémie CRESPIAN, DG ENV Unit D.3**



# The EU Nature Directives

## Birds Directive (1979) + Habitats Directive (1992)

Central EU policies for **biodiversity protection** in the EU27, focussing on the conservation of :

- all wild bird species naturally occurring in the EU (Birds Directive)
- ca.1300 species and 231 habitat types of Community interest (Habitats Directive)

Aim at **favourable conservation status**, defined as:

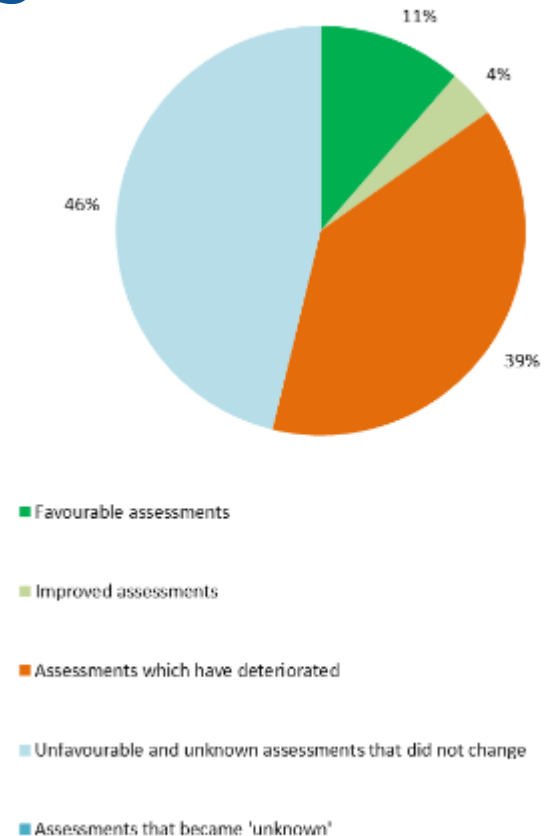
- natural range & distribution within range either stable or increasing
- structure and functions for its long-term maintenance at there
- habitats: conservation status of the typical species is favourable
- species: sufficiently large habitat to maintain populations in long term

Both directives have a **site protection** & a **species protection** pillar

# State of nature report 2015

## Changes (2007-2012 vs 2001-2006) in conservation status for habitats of Community interest associated with agricultural ecosystems (grassland and cropland)

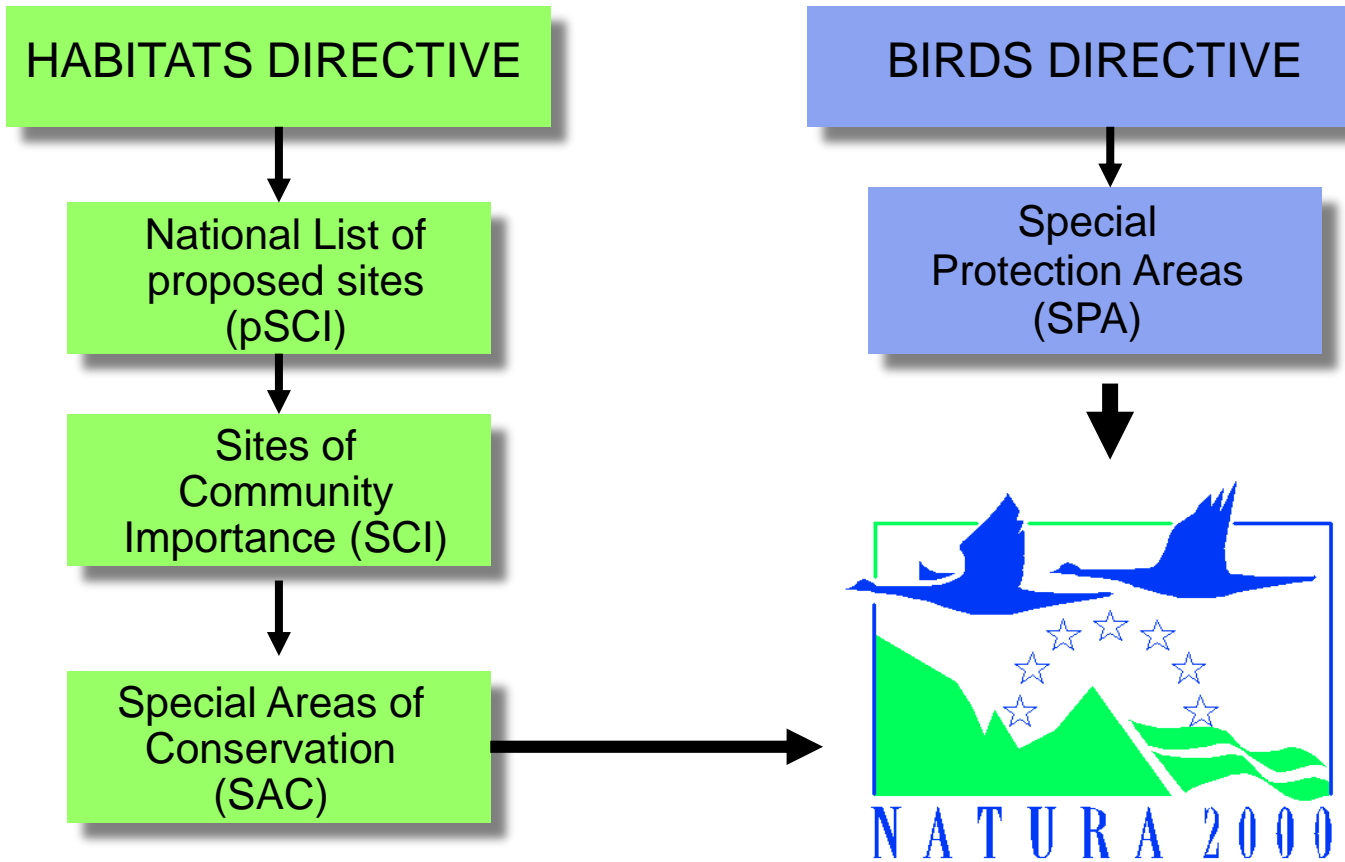
Source : EEA 2015





European  
Commission

# Natura 2000 – based on two EU Directives





# Natura 2000: main features

**Site protection pillar** of EU Nature Directives, focussing on:

- 193 bird (sub)species in Annex I + regularly occurring migratory bird species (Birds Directive)

- 869 taxa (at species or genus level), incl.  $\geq 297$  animal species, and 231 habitat types of Community interest (Habitats Directive)

**A coherent network** of sites, **selected on scientific criteria:**

- representativeness of sites in terms of distribution and area for each of the species & habitats of Community Interest

- should cover species & habitats across their entire natural range in the EU, irrespective of political boundaries

**Management of the sites** to maintain or improve conservation status

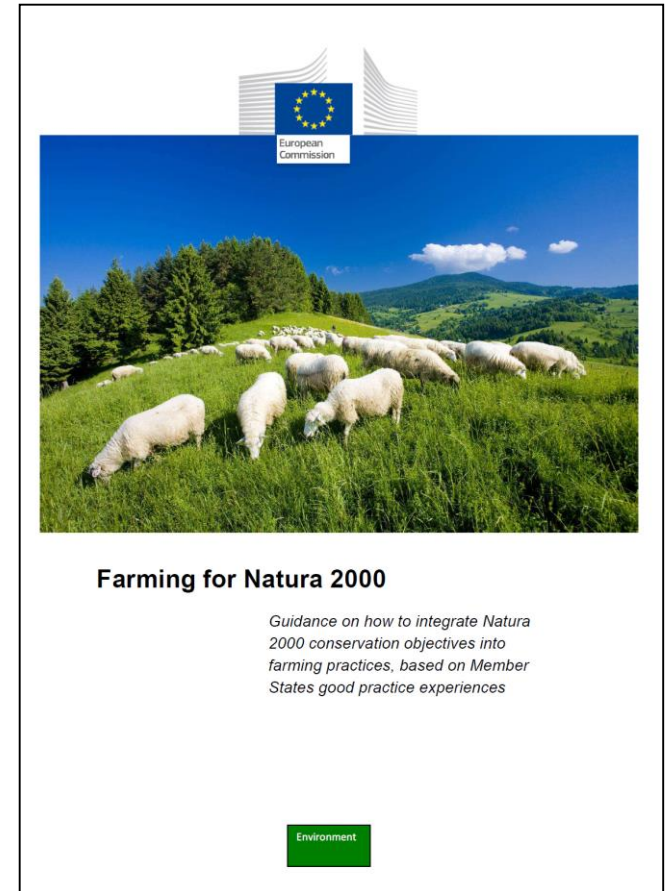
Strong **legal protection at site level**, although new activities or developments are not automatically excluded

# Farming for Natura 2000

**Guidance:** *how to integrate Natura 2000 conservation objectives into farming practices*

*Based on Member States good practice experiences*

*Prepared through an active dialogue with relevant stakeholders (agricultural and environmental authorities, farmers' organisations, environmental NGOs)*



# The Prioritized Action Framework

- Member State assessments of the necessary investments in the Natura 2000 network of areas of high biodiversity value
- Based on Article 8 of the Habitats Directive
- Contains :
  - **a strategic assessment of the investment needs necessary to achieve the objectives of the Natura 2000 network**
  - **together with information on necessary conservation measures and**
  - **the most appropriate financing instruments to implement these measures including EAFRD**



# An Action Plan for nature, people and the economy

- Ambitious and strategic response to the Fitness Check
- The ENRD workshop is one particular operational action in relation to Action 9 which is about "promoting synergies with the Common Agricultural Policy"
- CAP has the potential to support Natura 2000 implementation. Need to make the best of existing tools.
- [http://ec.europa.eu/environment/nature/legislation/fitness\\_check/action\\_plan/index\\_en.htm](http://ec.europa.eu/environment/nature/legislation/fitness_check/action_plan/index_en.htm)



# Approach of Action Plan

- **4 priority areas of Action**

- Improving guidance and knowledge and ensuring better coherence with broader socio-economic objectives
- Building political ownership and strengthening compliance
- **Strengthening investment in Natura 2000 and improving synergies with EU funding instruments**
- Better communication and outreach, engaging citizens, stakeholders and communities

- **15 Actions** (detailed factsheets in SWD), **7 involving CAP**

- **Timeframe 2017-2019** (cannot pre-empt next MFF and on-going debate on the future of CAP)

- **Key Actors: MS, COM, CoR, EIB, EEA, Stakeholders**

## Focus on Action 9-for COM

SUBACTIONS	STATE OF PLAY- What to do
64. Carry out an evaluation of the impact of the CAP on biodiversity, including on the use of financial resources for biodiversity protection and Natura 2000	<b>Evaluation planned early 2018.</b>

## Focus on Action 9- for COM

SUBACTIONS	STATE OF PLAY- What to do
<p>65. Encourage the full and effective use of the financial resources available for Natura 2000 sites and wider biodiversity protection in the period 2014-2020 under the European Agricultural Rural Development Fund (EARDF)</p>	<p><b><u>Identify RDPs/MS for which more effort is needed and identify good practices</u></b> <b><u>Rural Development Network : one day workshop with MS on 28 september</u></b> <b><u>RDC on 4 october.</u></b> <b>Presentation of the action plan + summary of needs</b> <b><u>Use existing dialog between COM and MS to communicate needs.</u></b></p>

## Focus on Action 9- for COM

SUBACTIONS	STATE OF PLAY- What to do
<p>67. Assess existing experience on result-based payment schemes for farmers under Rural Development, identifying opportunities and limitations as well as potential areas of application in order to promote their wider use</p>	<p><b>Follow and use results of the EU pilot project on Result Based Payment Scheme, managed by DG ENV</b></p>

## Focus on Action 9- for COM

SUBACTIONS	STATE OF PLAY- What to do
<p>69. In response to the ECA recommendation to the Commission to establish cross-cutting Natura 2000 indicators for all EU funds, consider improvement to existing indicators and the possibility to establish new ones</p>	<p><b>Wait for first discussion on future CMEF</b></p>

## Focus on Action 9-for MS

SUBACTIONS	STATE OF PLAY- What to do
<p>70. Assess the current use of financial allocations for biodiversity protection and Natura 2000</p>	<p><b>Action for MS. Stimulate and support MS in performing the action: Point to raise in RDC /CGBN/ENRD workshop</b> <b>Use the action on the update of PAFs</b></p>
<p>71. In response to the ECA recommendation to Member States, ensure that agricultural and environmental authorities share relevant information for the management of Natura 2000 sites</p>	<p><b>Stimulate and support MS in performing the action. Point to raise in RDC, CGBN, ENRD workshop.</b></p>

## Focus on Action 9- for MS

SUBACTIONS	STATE OF PLAY- What to do
<p>72. Support training and awareness raising for farmers and other relevant stakeholders in rural areas, e.g. forest owners, in particular through Farming Advisory Services about the measures implementing the Nature Directives.</p>	<p><b>Stimulate and support MS in performing the action</b> <b>Use results of current FAS questionnaire</b></p>

## Focus on Action 15-

**Involve young people by giving them the opportunity to get involved in nature protection in Natura 2000 sites (European Solidarity Corps)**

### SUBACTIONS

94. Carry out LIFE preparatory actions for young people under the European Solidarity Corps for the conservation of Natura 2000 sites. This will focus on in-country activities

95. Contribute through EU funding to offer young Europeans cross-border volunteering opportunities or professional experience in the field of disaster prevention and nature conservation.





European  
Commission

# Assessment of the integration of Natura into the RDPs :Funding



- Funding for Natura 2000 in all RDPs
- Broad consistency with the PAFs



- No proper natura tracking by RD indicators (ECA observation)
- Not always adequate coverage of the funding needs according to the PAFs
- NCA and light green measures absorb most of the money available

# Assessment of the integration :RDPs measures specifically dedicated to Natura 2000



- Some RDPs good combination of measures
- Grassland
- Landscapes features
- Agrienvironment widely used
- Better integration in the RDPs than other OPs



## Lack of

- actions to improve ecological connectivity (M4,4)
- submeasure 7.1 to support the establishment of management plans
- measures to help the coexistence with large Carnivores, with focus on prevention rather than compensation
- Result Based payment Schemes
- Forest measures dedicated to Nature protection

# Examples of good practices of M10 commitments for Natura 2000

- Ban of pesticides and fertilisers
- livestock units limits compatible with achieving favourable status of grasslands:
- measures adequate to site requirements/managements plans
- Specific actions for species and habitats of Annex I and II of the Directives
- Actions to fight against invasive species

# Useful links

- [http://ec.europa.eu/environment/nature/index\\_en.htm](http://ec.europa.eu/environment/nature/index_en.htm)
- Farming for Natura 2000:  
<http://ec.europa.eu/environment/nature/natura2000/management/docs/FARMING%20FOR%20NATURA%202000-final%20guidance.pdf>
- Habitat types dependent on agricultural practises:  
<http://ec.europa.eu/environment/nature/natura2000/management/docs/FARMING%20FOR%20NATURA%202000-ANNEXES%20A-D-final.pdf>
- EU-wide Natura 2000 database: <https://www.eea.europa.eu/data-and-maps/data/natura-8>
- Natura 2000 Viewer: <http://natura2000.eea.europa.eu/>
- EU-wide Article 17 datase: <https://www.eea.europa.eu/data-and-maps/data/article-17-database-habitats-directive-92-43-eec-1>
- Article 17 Reporting Viewer: <https://bd.eionet.europa.eu/article17/reports2012/>



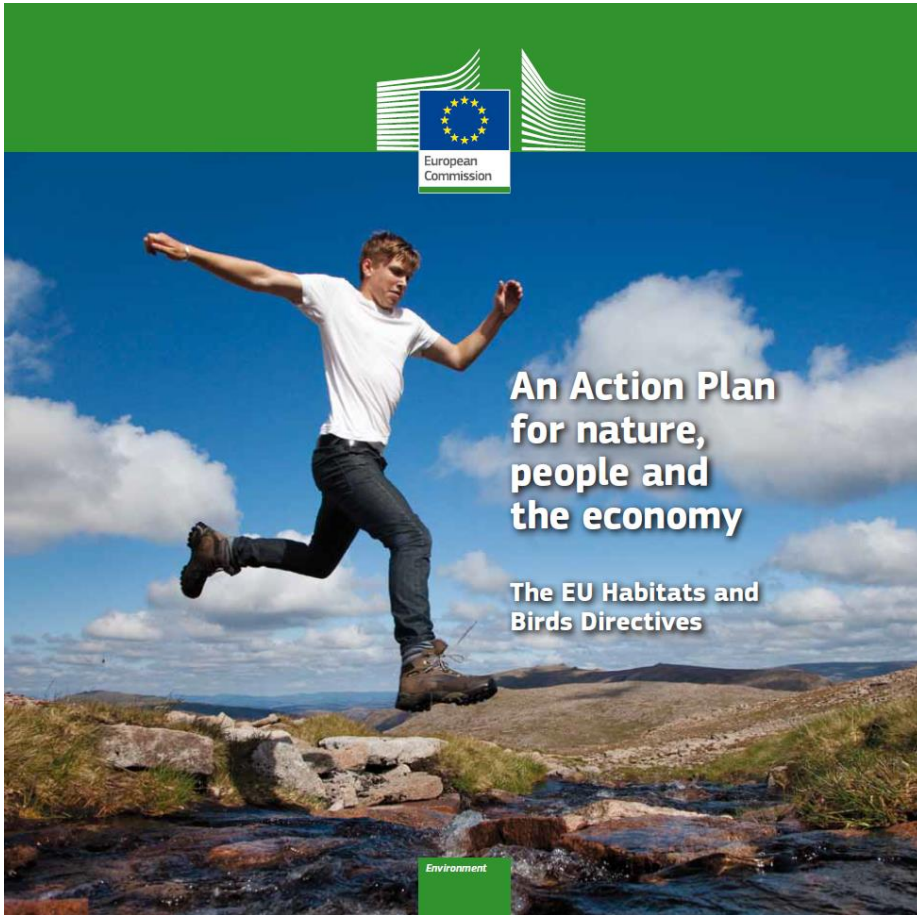
European  
Commission

The European Natura 2000 Award aims to raise the awareness about the Natura 2000 network of protected sites

To apply : <http://ec.europa.eu/environment/nature/natura2000/awards/>



**LAST CHANCE  
TO APPLY:  
DEADLINE  
EXTENDED UNTIL  
15 OCTOBER!**



**Thank you for your attention**