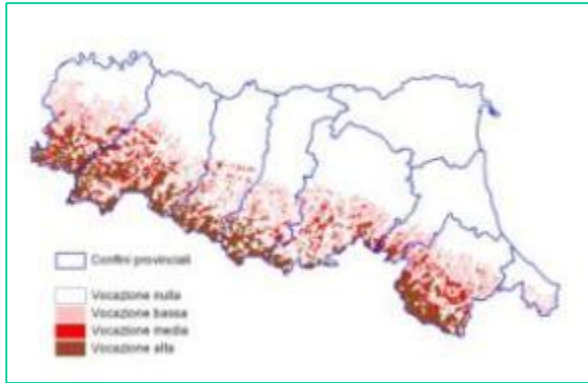


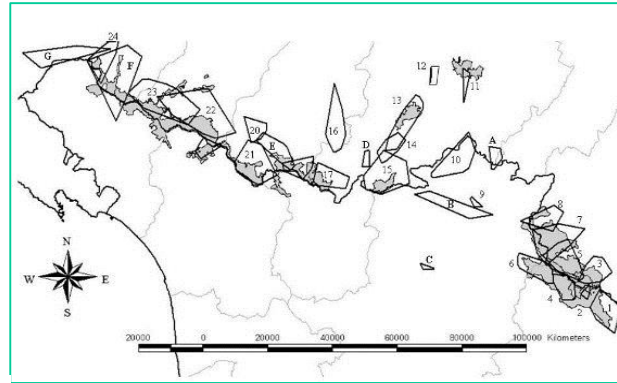
Wolf and R.D.P. in R.E.R. (Regione Emilia-Romagna) – Italia



(Zanni Maria Luisa – Duccio Berzi)



Wolf: previsional model



Wolf packs 2000-2010



Wolf: economic compensation
2010 – 2016

**Recent recolonization of wolves +
Unprepared breeders +
= bad acceptance!**

**Goal of the policy: conservation of the wolf
compatibly with zootechnical breeding**

1. From 1998 R.E.R. finances preventive measures for wildlife damages



2. In 2014 and 2015 a specific Pilot Project has been financed to spread preventive measures accompanied by the assistance of an expert technician , using a “case by case” approach.

3. In 2016 the R.D.P. has financed preventive projects with a value between 3.000 - 30.000 euro (100% of the entire value). Other fundings are offered by Leader Program and Regional Adm. for smaller interventions

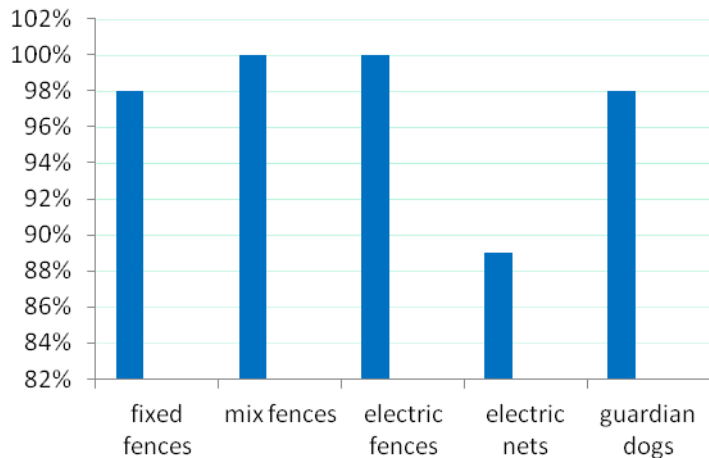


Pilot project (2014 and 2015)

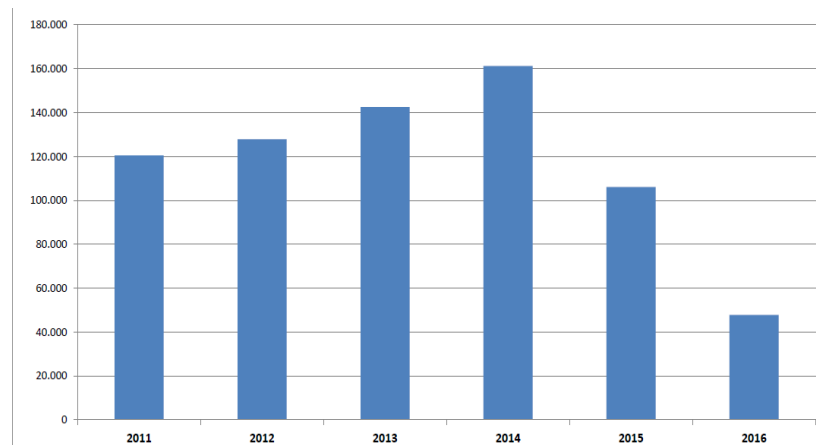
| Resources | Admitted demands | Achieved interventions | Used funds (approx) |
|------------------|------------------|------------------------|---------------------|
| 425.000 € | 166 | 86 | 230.000€ |

Average cost for each intervention 2.680€ (*de minimis* regime)

| <u>Type of intervention</u> | N° |
|-----------------------------|----|
| Fixed fences | 50 |
| Mix fences | 12 |
| Electric fences | 6 |
| Electric nets | 22 |
| Electronic devices | 11 |
| Guardian dogs | 3 |



Effectiveness of preventive measures (reduction of attacks)



Regional economic compensation 2011 – 2016

R.D.P. 2014-2020 in R.E.R.

2016: Call for preventive measures for wildlife damages

Rural Development Program

Measure 4 – Op. 4.4.02 – Focus area 4

| Total amount of presented requests | Total requests admitted | Total amount requested <u>for wolf</u> preventive measures | N° of requests <u>for wolf</u> preventive measures |
|------------------------------------|-------------------------|--|--|
| Euro 8.900.000 | <u>356</u> | Euro 2.950.000 | <u>132</u> |

| BUDGET | N° of financed interv. | Total € of financed interv. <u>for wolf</u> | Total n° of financed interv. <u>for wolf</u> |
|---------------------------------|------------------------|---|--|
| Euro 3.000.000 | <u>149</u> | Euro 1.050.000 | <u>57</u> |

| INTERVENTIONS | N° | Importo |
|-----------------|----|---------|
| Fixed fences | 34 | 800.000 |
| Mix fences | 3 | 89.000 |
| Electric fences | 7 | 97.700 |
| Electric nets | 9 | 25.470 |
| Guardian dogs | 3 | 10.200 |
| Others | 1 | 22.000 |

Planned field verifications, in 2017/8, of all the preventive measures financed, in order to re-calibrate next R.D.P. call

Stakeholders involvement

Before the issue of the R.D.P. call for proposal, through the Pilot Project, in 2014-2015 were organized 14 local meetings in order to involve the stakeholders foreseeing the RDP call

Local meetings were organized before the issue of the R.D.P. call for proposal in collaboration with Agricultural Organization in order to present the specifics of the call

The R.D.P. call was shared with Agriculture Organization through the Survey Committee and the Regional Agriculture Committee

Despite the wide adherence manifested by the breeders and the full support of the environmental organizations, the agricultural representatives have expressed disagreement for the call

Critical issues

Difficulties leading the choices of individual farms through the support of a specialized technician with specific competences

Long and expensive authorization processes for structural measures, which are the most requested ones

In Parks & Natura 2000 sites, conflicts emerging between preventive measures and conservation purposes

Necessity to identify standard costs to justify the congruity of the expenses, instead of the “lowest bid of the three” method

Despite a large adherence to the calls there is still the presence of a consistent core of breeders , that are not available to implement preventive measures as these involve costs and burdens that the local Administrations cannot support