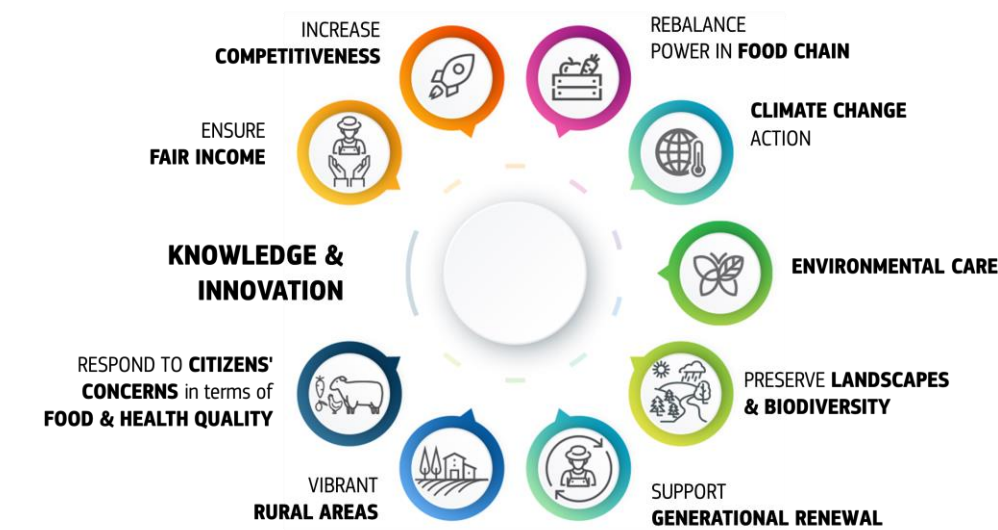


SUPPORT THROUGH THE CAP STRATEGIC PLAN 2021-2027

Member States set targets and design interventions in CAP Strategic Plans

- *According to SWOT analysis and assessment of needs*
- *Contributing to one or more of the 9 CAP objectives*



E. g. combination of interventions under cooperation, digital solutions, LEADER, knowledge exchange and information, investments...

Build on and complement existing structures

– combine with other funding sources

THE FRAME

We're at an early stage...

- Legal framework for future policy unknown – negotiations in Council and Parliament.
- Informal discussions, based on ENRD thematic work so far.

... but don't wait!

- *CAP Strategic plans under preparation – we need to prepare well to find the right solutions.*

Be creative!

- The legal framework will allow great flexibility for putting together relevant solutions!
- MS are crucial for finding the solutions that will work.
- Several ways of doing it – take away ideas and adapt to the situation in your MS.
- Networking plays a crucial role – that's why we're here!

COMING UP

Preparatory Action on Smart Rural Areas of the 21st Century (European Parliament)

- Experience with animation of design and implementation of strategies for selected villages.
- Explore and find best ways of supporting Smart Villages.
- Contract by the end of the year.



NEW COMMISSION 2019-2024

President-elect Ursula von der Leyen

- *"Our rural areas are home to more than 50% of Europeans. They are the fabric of our society and the heartbeat of our economy. The diversity of landscape, culture and heritage is one of Europe's most defining and remarkable features. They are a core part of our identity and our economic potential. We will cherish and preserve our rural areas and invest in their future."*

Mission Letter to Janusz Wojciechowski, Commissioner-designate, Agriculture

- *"You will develop a new long-term vision for rural areas, working closely with the Vice-President for Democracy and Demography. You will ensure that the needs of rural areas are specifically catered for in national Strategic Plans under the new Common Agricultural Policy."*

Thank you!