



MAASEUTU.FI

Smart Villages in Finland

19.11.2019

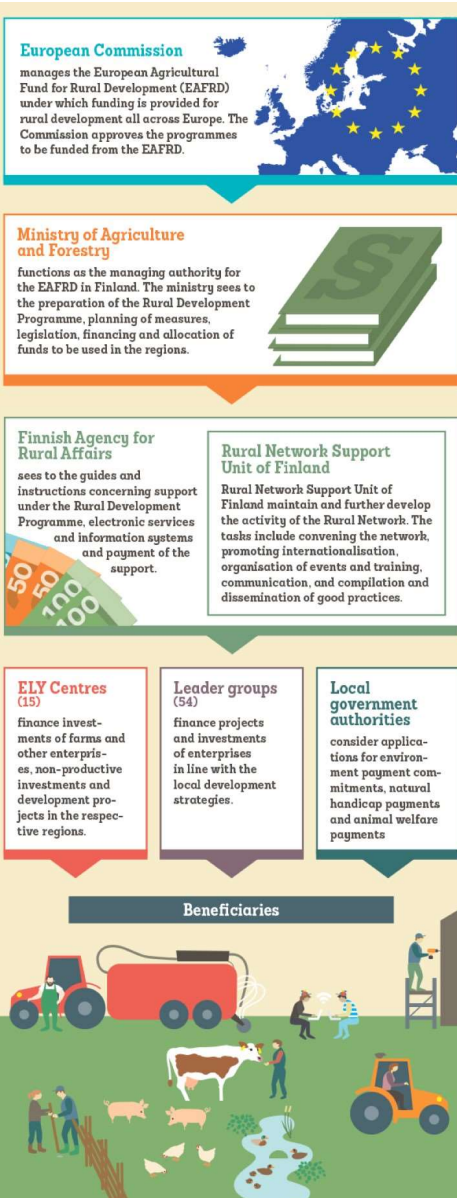
Marianne Selkänaho, Ministry of Agriculture and Forestry

The existing policy landscape for supporting Smart Villages in Finland

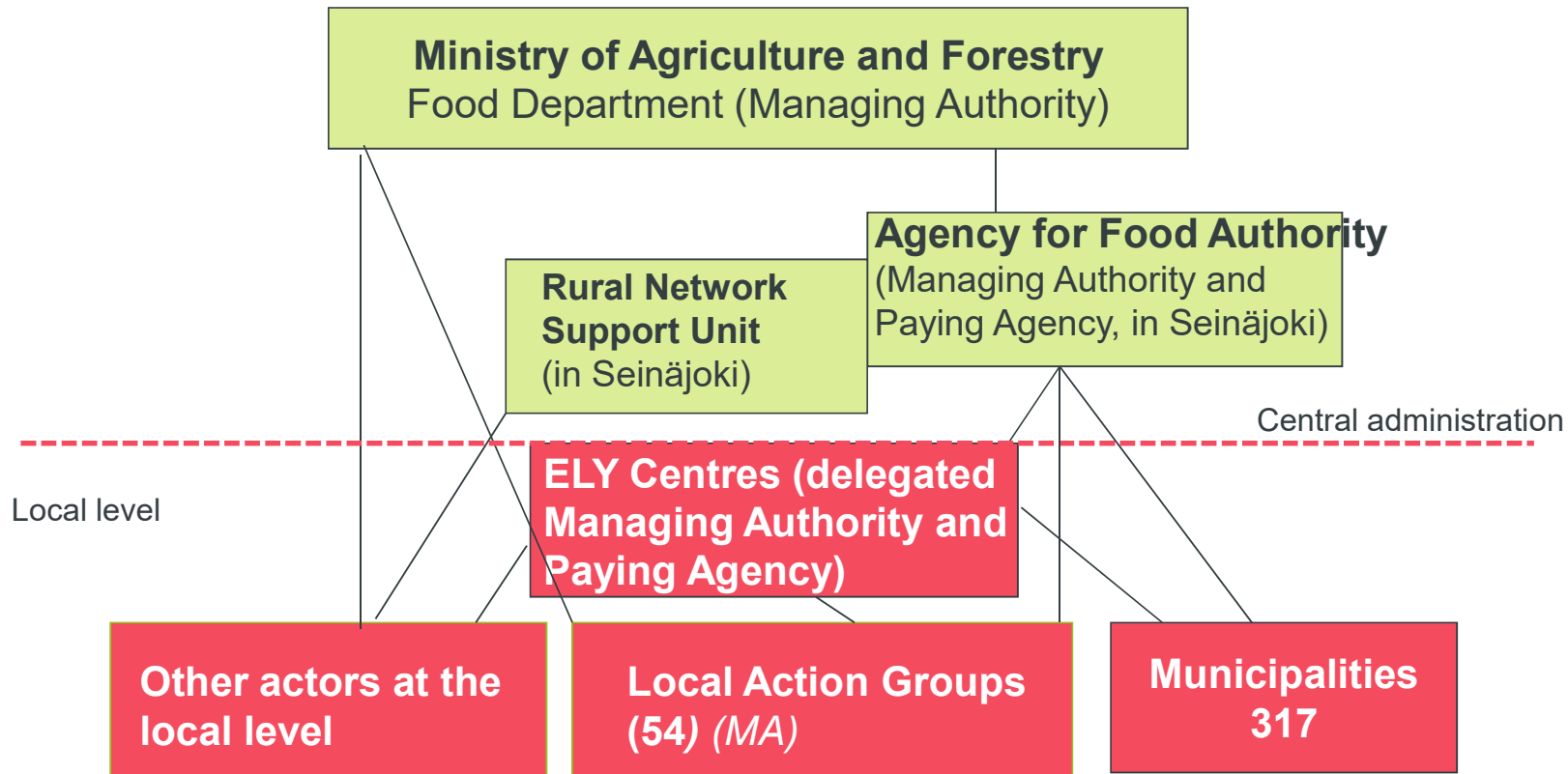
- 2008 the first national strategy for Fast broadband, **national funding** for rural broadband -> 2018
- 2016: Study for Smart countryside, governmental project
- 2017: New governmental decision for **Rural Digitalization**
- 2018: Governmental alignment: Priority of digital services (public sector)
- **Co-operation** between national administration and other actors → **Broadband Competence Office** Finland www.bco.fi
- National Rural policy council: **target setting** for rural areas
- National Village Action Association
- **Rural Development Programme 2014-2020**, regional and local actions (M07, Leader),
 - **Broadband funding (village broadband)**
 - **Digitalisation projects**
 - **Smartest Village of Finland -competition 2018-2020:** <https://www.maaseutu.fi/en/topical-greetings-from-countryside-and-around-the-world/32-villages-want-to-be-the-smartest-in-finland/>
- Draft for national plan for traffic system may include something for SV?
- **CAP 2022 - 2027**

Actors of RDP of Mainland Finland

- **Ministry of Agriculture and Forestry:** managing authority of the programme, planning of the programme and amendments to it, provisions, competent authority as regards the paying agency
- **Finnish Agency for Food** management of support payments, application forms and instructions, paying agency tasks: payment of support, control and further measures (some tasks transferred to ELY Centres and municipalities)
- **Rural Network and Rural Network Support Unit**
- **Centres for Economic Development, Transport and the Environment (ELY Centres):** support for enterprises (incl. setting-up aid for young farmers and agricultural investments) and development projects, special agri-environment contracts, non-productive investments, certain paying agency tasks
- **Leader groups:** projects and support for enterprises under local development strategies
- **Municipalities:** commitments to basic agri-environment measures, natural handicap payments, animal welfare payments, certain paying agency tasks



Actors of RDP of Mainland Finland



Public funding for the Rural Development Programme

Measure	EUR million
Knowledge transfer and information actions	80
Advice	34
Investments in psysical assets - of which fully national additional financing	1,035 656
Farm and business development - of which fully national additional financing	402 67
Development of rural services and villages	80
Environment payments	1,586
Organic production	326
Natural constraint payments - of which fully national additional financing	3,734 1,924
Animal welfare	458
Cooperation and innovations (incl. EIP)	160
Leader	300
Technical assistance	70
Total *Additional to private inputs, e.g. investments and voluntary work	8,265

Activities in relation to smart villages

- Digital know-how for seniors and entrepreneurs (M07, Leader)
- Digital tutor actions (M01, Leader)
- Digitalisation of cultural heritage and other activities (M07, Leader)
- Multiservice centers, integrated services (M07, Leader)
- Digital tools for tourism and different kind of sports (M07 and M16 and Leader)
- e-health service and other services for different age groups, local experiments, planning, pilots (M07, Leader)
- e-learning, distance learning (M01, Leader)
- skills and know-how for using digital services (M01 and M07 and M16)
- digitalisation of rural businesses, new co-operation (M16)
- integration of immigrants (M07, M16, Leader)
- certain tangible and certain intangible investments and start-up aid for rural enterprises (M6.2 and 4.2)

<https://www.maaseutu.fi/en/the-rural-network/good-finnish-ideas/>

Good Finnish ideas

Check out also coordination projects!



Intelligent fodder helps in cattle feeding



Thermal imaging aiding dairy cow management



A new way of providing local services in the Järvikylät area



Sisters find success with bottle-teat innovation

The existing policy landscape for supporting Smart Villages in Finland

Rural Development Programme for Mainland Finland 2014-2020: Especially Measure 7 and Leader

7.1 the drawing up and updating of plans for the development of municipalities and villages in rural areas and their basic services and of protection and management plans relating to Natura 2000 sites and other areas of high nature value;

7.2 investments in the creation, improvement or expansion of all types of small scale infrastructure, including investments in renewable energy and energy saving;

7.3 broadband infrastructure, including its creation, improvement and expansion, passive broadband infrastructure and provision of access to broadband and public e-government;

7.4 investments in the setting up, improvement or expansion of local basic services for the rural population, including leisure and culture, and the related infrastructure;

7.5 investments for public use in recreational infrastructure, tourist information and small scale tourism infrastructure;

7.6 studies and investments associated with the maintenance, restoration and upgrading of the cultural and natural heritage of villages, rural landscapes and high nature value sites, including related socio-economic aspects, as well as environmental awareness actions

Measure 7: Development of services and villages

- More than 3800 projects (80 M€ and Leader)
- Development projects and investment projects (investments for public use)
- Part of projects funded from Leader
- Broadband funding for rural village broadband networks (7.3)
- Investments for improvement or expansion of local services for the rural population, including leisure and culture
 - Multiservice houses
 - Safety and common preparation
 - Digitalisation of services
 - Common environmental actions, water conservation actions, decarbonisation
- The whole measure and selection criteria for that are targeting to Smart Villages

Measure 16: Co-operation



- More than 820 co-operation projects (about 123 milj. €)
 - Appr. 189 000 euros / project
 - More than 200 enterprise groups (3-10 entrepreneurs / group)
 - Measure 16.1: **Rural Innovation Groups** The measure aims to create an optimal setting for developing innovations that promote agriculture and forestry by making the best possible knowledge and expertise available for the group developing the innovation, ensuring that an idea, once suggested, can be turned into a deployable innovation.
 - 10 projects
 - <https://www.maaseutu.fi/en/the-rural-network/good-finnish-ideas/innovation-groups/>
- Digitalisation, innovations (also social) and all kind of co-operation (energy, wellbeing and co-operation of farmers, environmental solutions, circular economy, tourism, different industries, new ways of doing things)

Leader: The phases of mainstreaming

<u>Time</u>	<u>Forms</u>	<u>Area</u>
• 1996	22 Leader II groups	1/3 of rural areas
• 1997	26 Pomo groups	1/3 of rural areas
• 2001	25 Leader+ groups	almost 40% of rural areas
• 2001-2002	26 Alma or Objective 1 groups	almost 50% of rural areas
• 2001	7 Pomo+ groups	about 10% of rural areas
• 2002-2006	58 LAGs	almost all rural areas, only 6 rural municipalities outside
• 2007-2013	55+1 LAGs	All rural areas covered by LAGs. RDPs' for Mainland Finland and Åland Islands
• 2014-2020	54+1 LAGs	All rural areas covered by LAGs

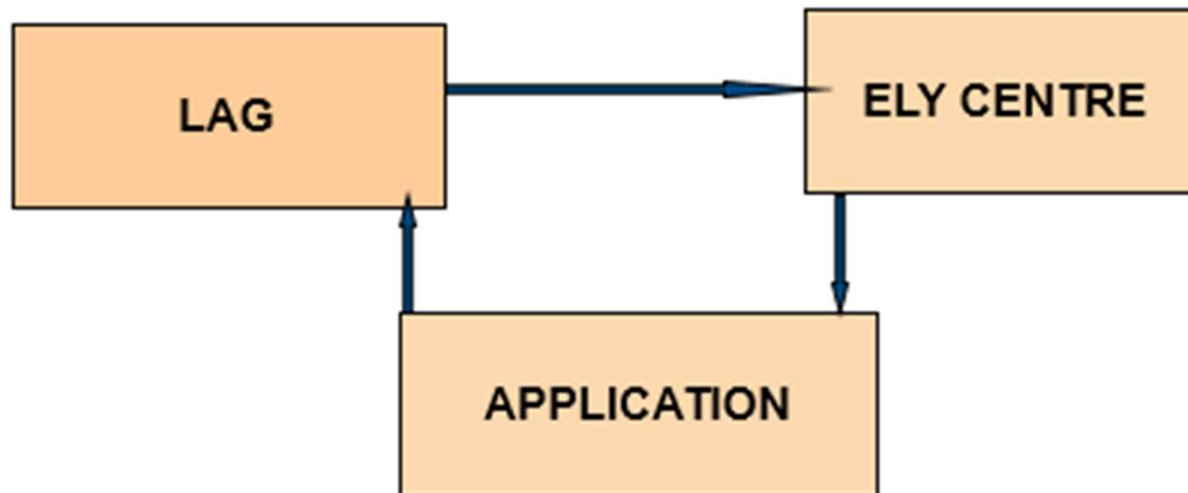
Sivu 7 15.11.2019

Euroopan maaseudun
kehittämisen maatalousrahoitus:
Eurooppa investoi maaseutualueisiin.



Decision making procedure in Leader: a simple picture

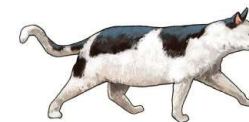
- A double-layered decision making procedure: statement of approval from a Leader group is needed for the decision making at the ELY Centre



A LAG's duty is to advise the applicant and check the application, while the ELY Centre conducts the legal verification

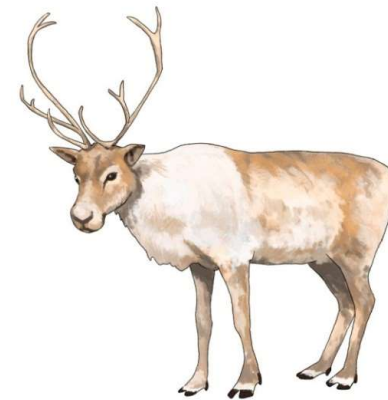
Finnish principles for Leader are

- Members in the board of the LAG:
 - 1/3 representatives of municipalities
 - 1/3 local associations and enterprises
 - 1/3 rural inhabitants
- National public funding: municipalities of the LAG area must cover 20% of total public financing
- All rural areas covered by LEADER methodology
- LAGs, ministry and NRN work closely together – easy, straightforward, trustful dialogue
- Active voluntary network of LAGs – one voice instead of 55 voices
- Continuous improvement of Leader work



Finnish Leader 2014-2020

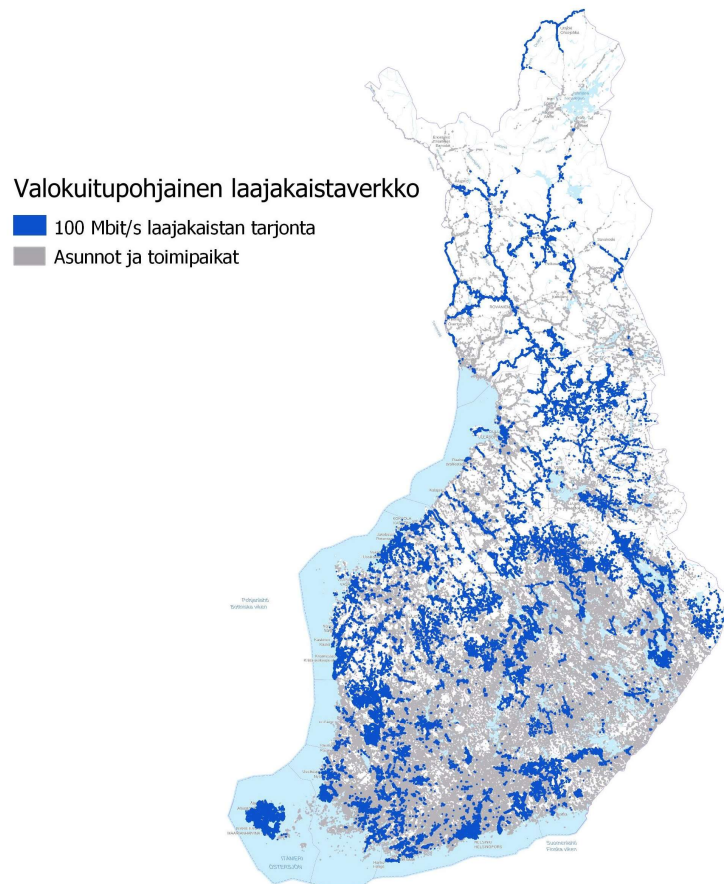
- 55 LAGs cover the rural areas of Finland
- 300 million euros of public funding is allocated to Leader work through Rural Development Programme
 - EU 42 %, national 38 %, municipalities 20 %
- Aim: 35 % of private funding
- 2,9 – 11,1 millions euros of public funding per LAG



Leader projects

- Theme projects
 - More than 300 projects
 - 44 Leader groups have their own theme projects
 - Leader group as a manager of the project, the aim is to activate small actors, new developers, young people..
 - Theme project as a collector of small but important activities
 - Small investments, village houses, sport and leisure investments
 - Restoration of natural areas and landscapes
 - Digital tools for villages, safety issues
 - Activation of young people

Outstanding Challenges. What is needed for delivering smart village?



- Broadband infrastructure (fast broadband)
- The activators, “the priests” are needed and a lot of work. Somebody to collect and coordinate actors and work. Activists are getting older..
- New attitude and know-how
- **CO-OPERATION:** Strong communication and interaction in the region and between regions
- Quality and reliability of services, Know-how and knowledge transfer
- Change in attitudes towards technology – information gap, knowledge
- New people (immigrants) and young people. Amount of elderly people: dependency ratio 146 in 2016 in Finland

www.mawww.maaseutu.fi/en/the-rural-network/smart-villages/seutu.fi/suomenalykkain
<https://www.rural.fi>

<https://mmm.fi/cap27>

