

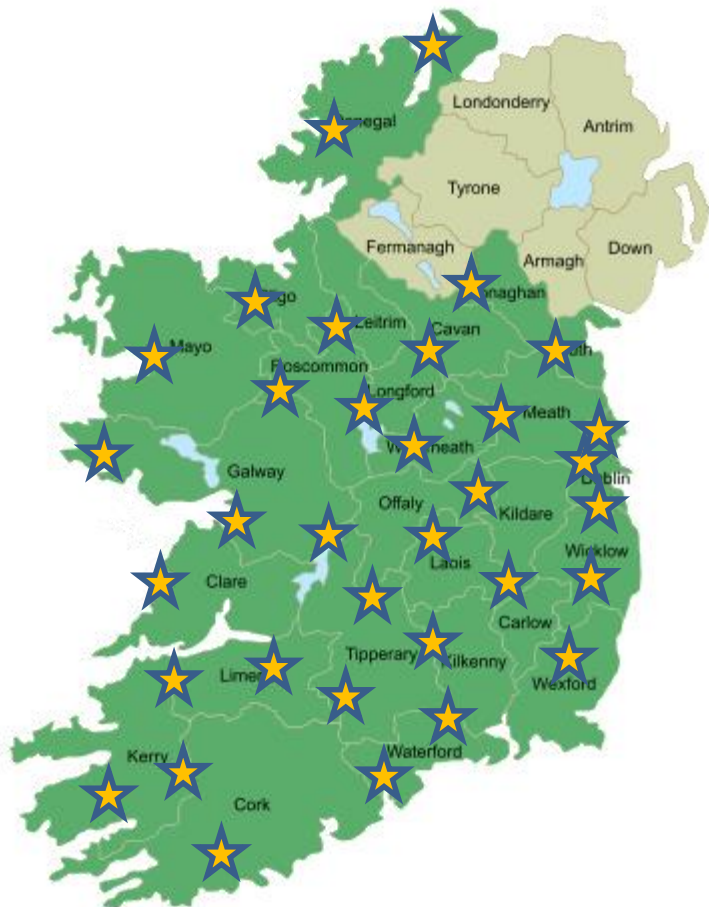


Smart Villages

An Irish Perspective

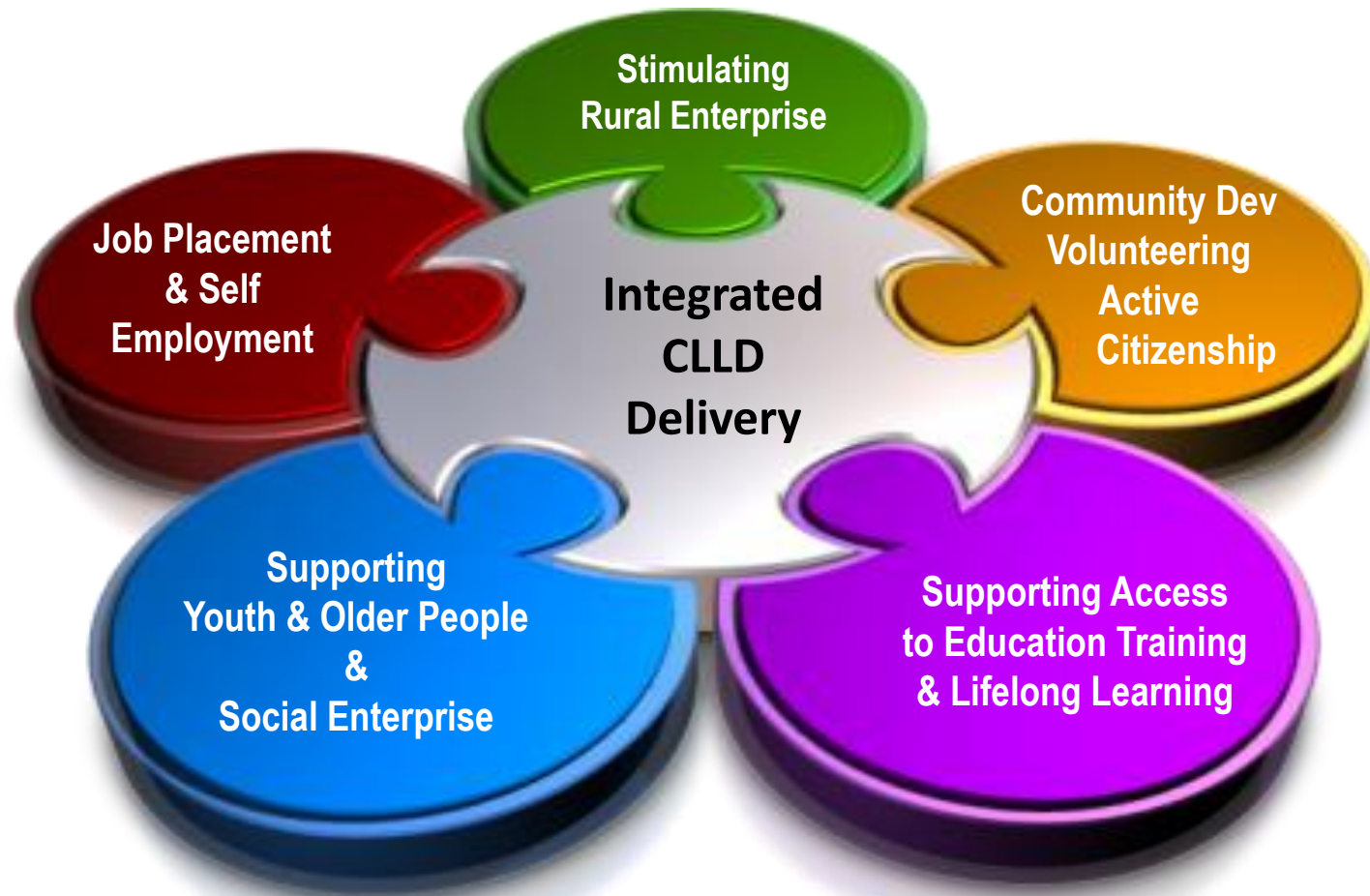
From Irelands Network of Local Development Companies

Gabriel O'Connell & Declan Rice
ENRD Thematic Working Group on Smart Villages
5th December 2018



- 49 Local Development Companies (LDCs) in Ireland
- 35 (Rural) deliver LEADER
- + Complementary Programmes:
 - SICAP (Social Inclusion Prog)
 - Local Employment Service
 - Jobs Club
 - Community Employment Schemes
 - Migrant & Belonging Services
 - Volunteer Centres
 - PEACE Prog (Border Region)
 - Environment Initiatives
 - Community Health & Wellbeing

INTEGRATED COMMUNITY LED LOCAL DEVELOPMENT



- Needs of rural communities are often **multi faceted and complex** – requiring an **integrated approach** to rural development
- LDCs in Ireland have been working to employ a **‘one-stop-shop’ approach**, **blending programme funds** to achieve an integrated approach for rural communities

Policy Context

National Rural Development Programme 2014 - 2020

+ Action Plan for Rural Development



Realising our Rural Potential

Action Plan for Rural Development



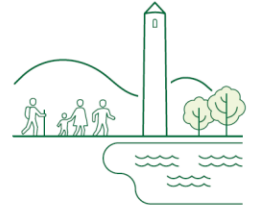
ACTION PLAN FOR RURAL DEVELOPMENT

Key Deliverables



Support **135,000**
NEW JOBS by 2020

Increase
overseas
visitors
by **12%**



Invest **€50+ million**
in sports, recreation
& cultural facilities



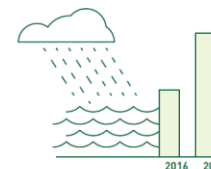
Revitalise **600+**
towns and villages



**PROTECT VITAL
LOCAL SERVICES**



Ensure **ALL** homes
& businesses are
**CONNECTED TO
BROADBAND**



Double investment in
**FLOOD RELIEF
WORKS** by 2021



Support **4,000**
new community
projects



Realising our Rural Potential

Action Plan for Rural Development



Local Development Company Contribution (2017)

Pillar 1: Supporting Sustainable Communities

11,237

***Communities**

- 3,882 Tús
- 2,141 RSS
- 1,916 SICAP
- 281 CE
- 3,017 Others

Plus LEADER

83,400

***Individuals**

- 28,749 SICAP
- 26,997 Rural Dev.
- 6,029 Education & Training
- 5,649 Health
- 3,994 Environment
- 11,982 Others

* Some may avail of more than one service

Pillar 2: Supporting Enterprise and Employment

EMPLOYMENT

17,866 persons

- 5,731 in Jobs
- 5,606 Tús
- 3,116 Self Employed
- 2,729 RSS
- 684 CE

51,171

***Individuals**

EMPLOYMENT SUPPORTS

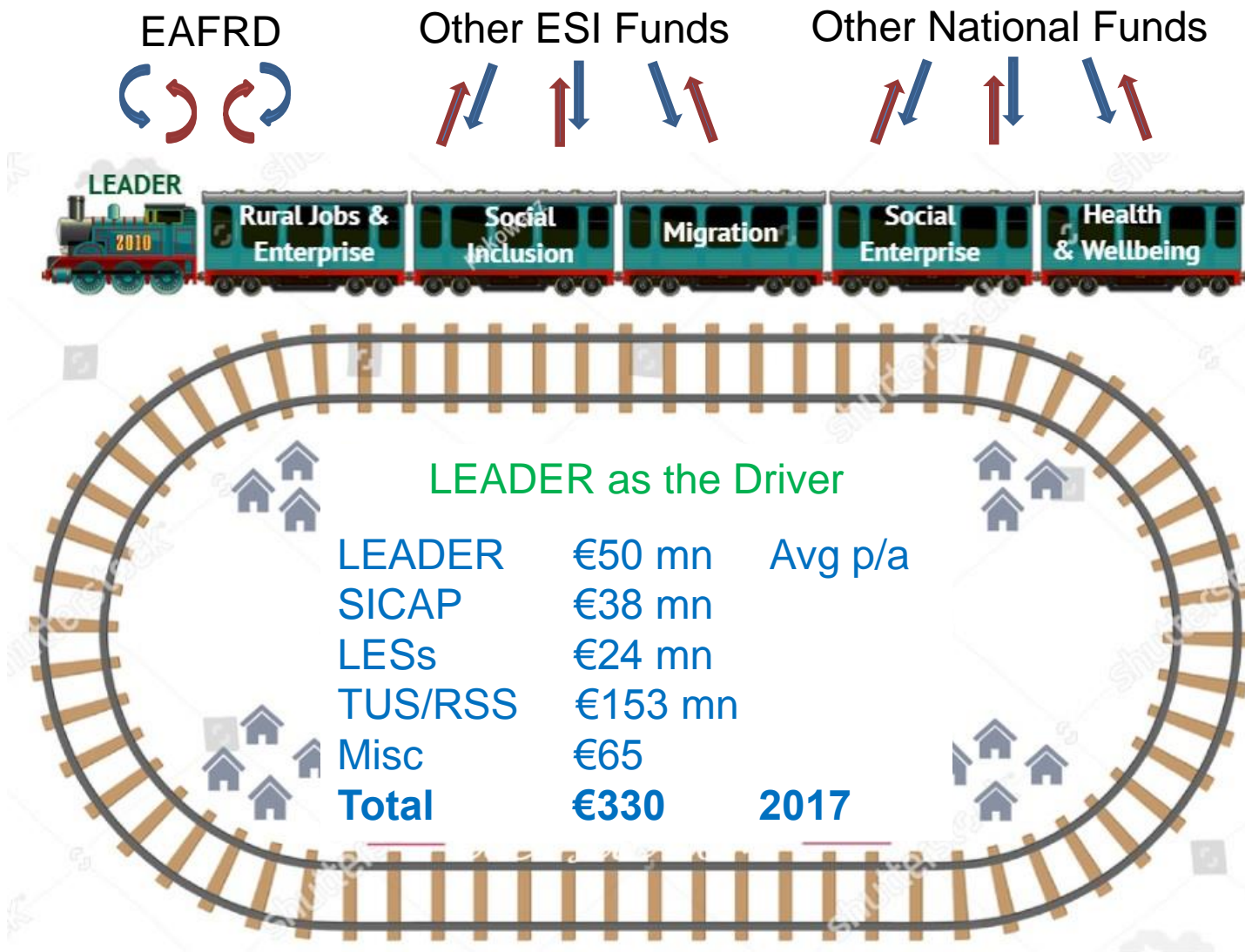
33,305 persons

- 18,323 SICAP Supports
- 8,630 LES
- 3,650 Jobs Clubs
- 2,702 Self Employment Supports

* Some may avail of more than one service

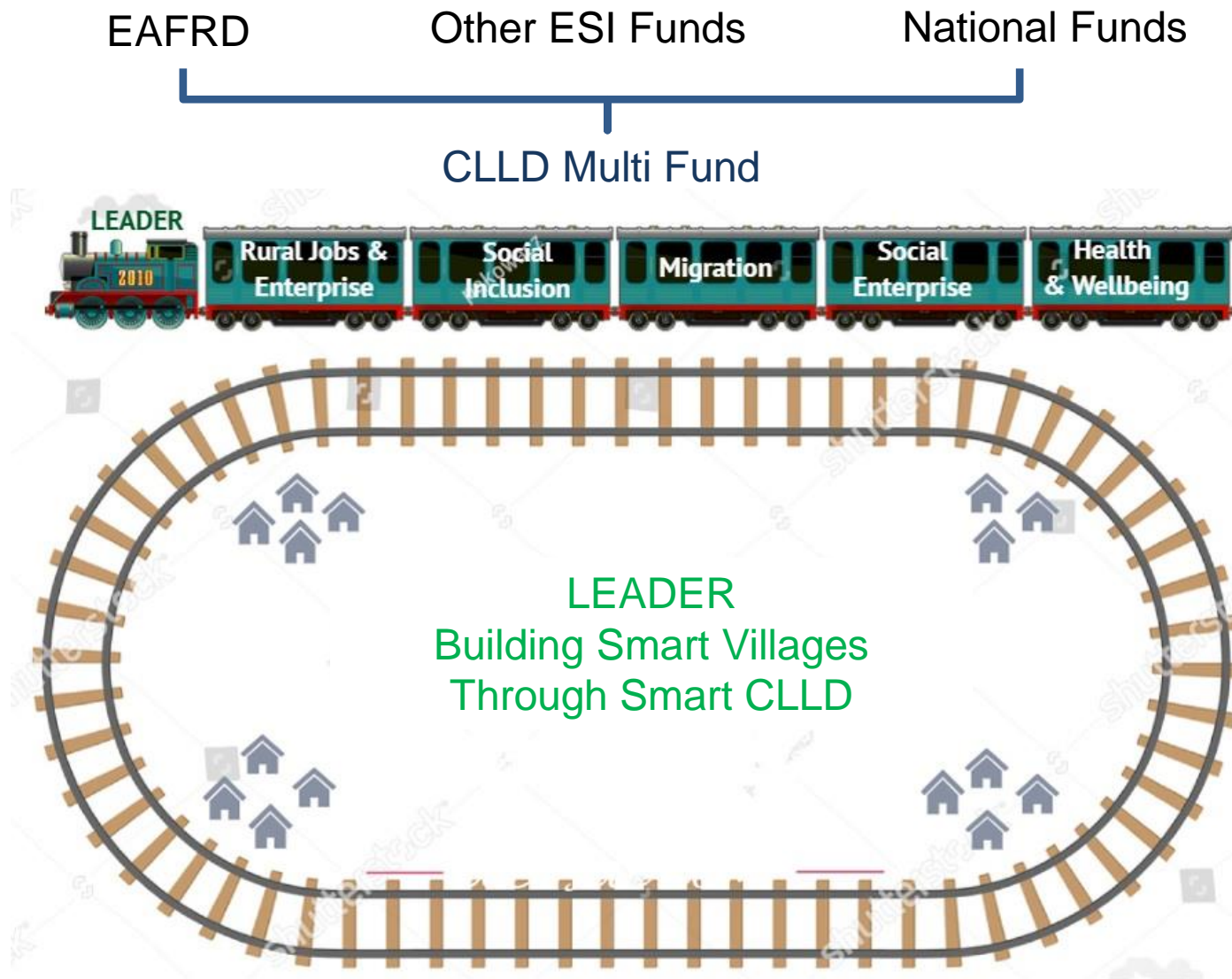
Current Model

Integrated CLLD – Through Social Innovation



Ideal Model

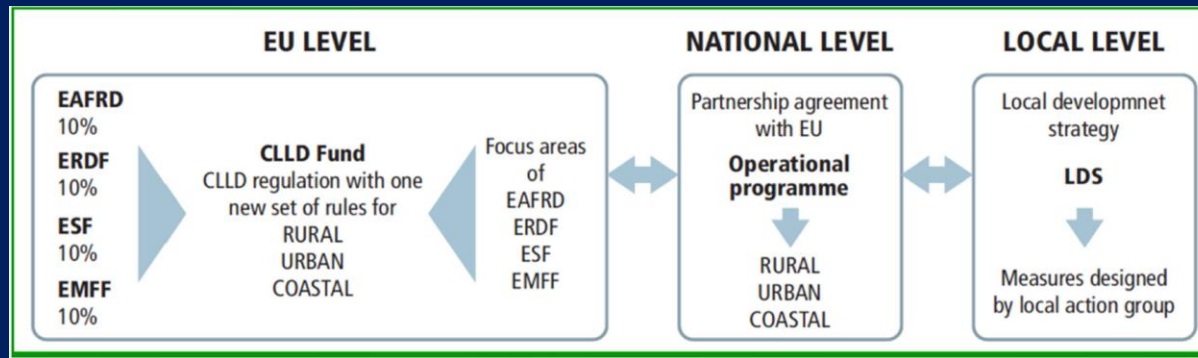
Integrated Smart CLLD – Through Social Innovation



So what is needed to realise our ambition for Smart Villages?

- **Evolving context - right wing** populism is an emerging challenge. EU must free up Rural Development from bureaucracy & allow it **to demonstrate value added of EU**
- **Reduce risk & complexity of Multi Fund approach**, Structural Fund rules need to be aligned, simplified and administration burden disincentives removed
- **Simplify drawdown and reporting of multi fund CLLD** – Single MAs to take responsibility and act as the conduit to align multi fund with LEADER
- **Avoid creating parallel structures and use existing toolbox** - Use **LEADER experience & capacity** as the vehicle to drive Smart CLLD at local level for Smart Villages
- MSs need to **embrace bottom-up development** and **empower rural communities to reach their potential** –using LEADER / CLLD to **build social capital in communities;**
- **Social innovation is an investment** in improving social capital – **communities with high social capital are more likely to initiate positive community actions and attributes** – a key requirement for Smart Villages and countryside's
- **LEADER / CLLD is a proven example of social innovation at governance level** through institutional innovation, **we** need to **ensure LEADER / CLLD** has the **agility / flexibility** to face the SV challenges

The Venhorst Declaration 2017 calls for a reshaping of CLLD beyond 2020



- Establish a separate **decentralised Fund for Citizen-led local development**
- The fund to receive **10% of the European Structural Investment Funds** with **no distinction or demarcation** between the ESI funds
- The **fund to be deployed on a decentralised basis**, through **citizen-led local partnerships which are not institutionalised** (The LDCs in Ireland as one example);
- so that **local strategies can respond to local needs** / challenges (integrated way)
- There needs to be **a shift from compliance to achieving goals and respecting the agreed principals / methods** of the LEADER/CLLD approach
- This is more than a simplification of CLLD, it would be **a radical rejuvenation of the Institutional innovation that is LEADER / CLLD**
- This new Citizen-led CLLD approach **needs to be strengthened and copper fastened in the CPR**, as currently there is no obligation for the ESI funds (outside of EAFRD) to put any funding into CLLD & **EAFRD no longer part of cohesion policy**



Thank You

Gabriel O'Connell goconnell@midl.ie

Declan Rice declan.rice@cklp.ie