



Mainstreaming WFD objectives into sectoral policies – an example of Rural Development Programmes

Josselin Rouillard, Ecologic Institute



www.ecologic.eu

H2020 AQUACROSS project:
<http://aquacross.eu/>

Tackling drivers of loss of aquatic biodiversity

- ▶ Common Agricultural Policy
 - ▶ Direct payments: 290 billion EUR (2014-2020)
- ▶ EMFF (maritime and fisheries): 6.4 billion EUR (+ co-financing by member state)
- ▶ Regional Funds (Cohesion Fund + ERDF): 350 billion EUR (+ co-financing by member state)

Driver	Significance to European Economy	Future trends
Agriculture	<ul style="list-style-type: none"> • Utilised agricultural area: 170 million hectares (2013) • 10.8 million farms operating in the EU-28 (2014) • Employs 9.5 million people, 4.4% of total employment (EU-28, 2013) • GVA of the sector is around 160 billion EUR (2013) • Share of agriculture in EU-27's GDP (GVA/GDP): 1.2% (2013) 	↗
Urban areas	<ul style="list-style-type: none"> • 67% of EU GDP in metropolitan regions of more than 250 000 inhabitants • 7% of the EU's population live in cities of over 5 million inhabitants • In the EU: 26 cities of more than 1 million inhabitants, and 373 cities of more than 100 000 inhabitants 72.4% of the EU's population lives in cities, towns and suburbs 	↗
Water utilities	<ul style="list-style-type: none"> • Involves 75 400 enterprises and employs 1.5 million people. • A GVA of 97.5 billion EUR 	↗
Commercial fishing	<ul style="list-style-type: none"> • GVA of EU fisheries amounts to 3.4 billion EUR • Provides 127 686 jobs • 83 590 fishing vessels registered in the EU fleet 	↗
Aquaculture	<ul style="list-style-type: none"> • Supplies 24% of Europe's seafood (2014) • GVA of 1 500 million EUR (EU-28) (2013) • 80 000 employees in a full time equivalent of around 27 000 jobs (2013) • 8th biggest aquaculture producer in the world (2015) 	↗
Energy	<ul style="list-style-type: none"> • Renewable sources supply 25% of primary energy production in Europe. • Hydropower accounts for 16.6% of primary energy production, the EU 28's largest renewable energy resource (2013). • Offshore wind: 10% of total wind energy in Europe; 35 000 employees; GVA of 2.4 billion EUR. • Crude oil and gas: 9.1% and 15.5%, respectively, of energy supply. • Oil and gas: GVA 107-133 billion EUR, and 25 000- 50 000 jobs (2011). 	↗
Transport	<ul style="list-style-type: none"> • Road transport: 49.4% of total good transport within the EU, inland waterways: 4%, intra-EU maritime transport: 31% (2015). • Turnover for road freight: 312 billion EUR; 2 945 700 employees • Turnover for road passenger: 121 billion EUR; 1 988 500 employees • Shipping: 75% of imported and exported goods by weight in Europe (2015). • Value of shipping to overall trade: 1,733.7 billion EUR (50.7% of EU trade) 	↗
Industry	<ul style="list-style-type: none"> • 1.2 million employees in chemical industry; generates 551 billion EUR; the 5th largest industry of Europe; contributes 7% of Europe's manufacturing added value; 17% of global production. • 19 000 firms in the mining and quarrying industry in EU-28; 614 400 jobs; turnover: 260 222 million EUR; added value: 85 903 million EUR (2012). • 3.3 million firms in construction; 12.7 million employees; turnover of 1 545 459 million EUR; and 492 897 million EUR of value added (2012). • Blue biotechnology industry: GVA of 800 million EUR; 18 000 natural products and 4 900 patents associated with genes of marine organisms 	↗
Waste sector	<ul style="list-style-type: none"> • Turnover of 137 billion EUR; 2 million jobs • 1.1% of EU GDP 	↗
Tourism	<ul style="list-style-type: none"> • Tourism contributes up 10% of EU GDP.; employs 12 million people (2013). • Turnover of 941 075 million EUR. • Coastal and maritime tourism: 3.2 million jobs and 183 billion EUR in 	↗

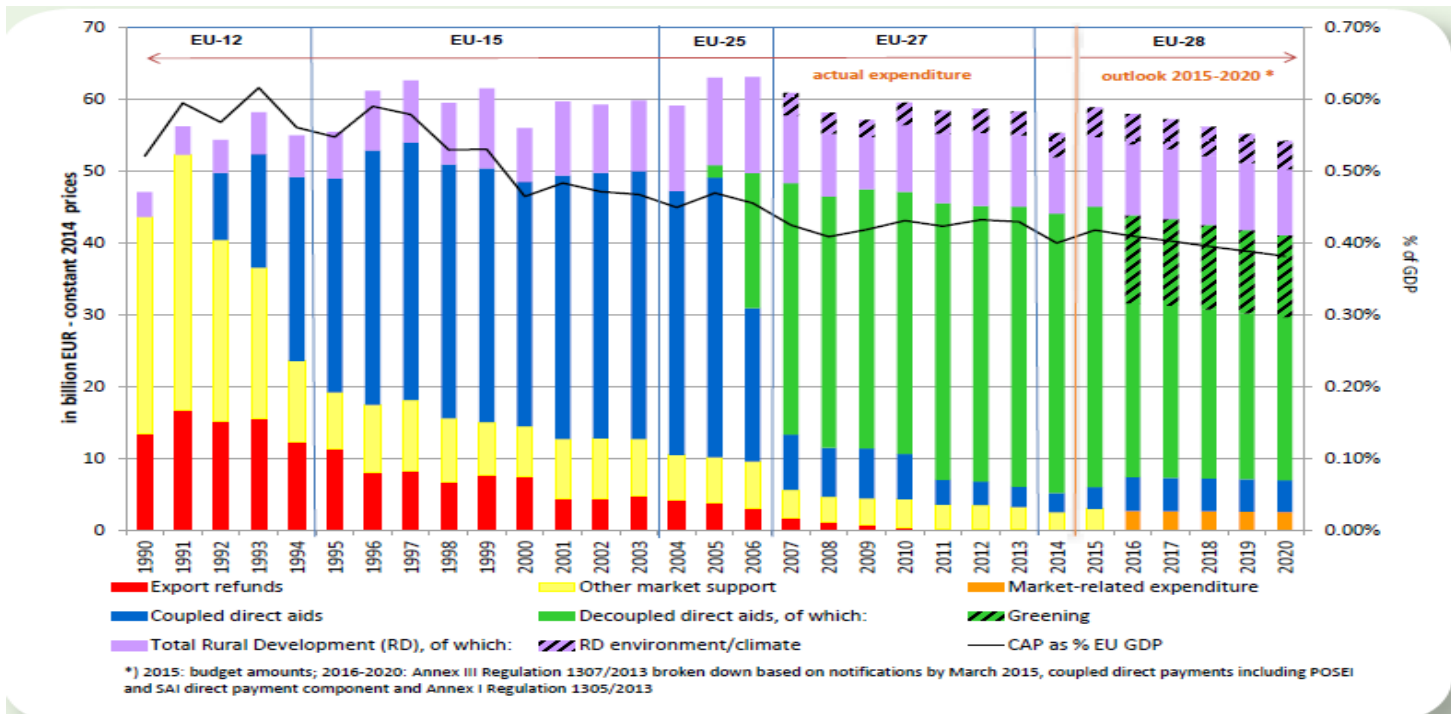


Some mechanisms for mainstreaming at EU level

- ▶ **Establishing standards, best practice technologies or best management practice** (e.g. Industrial Emissions Directive)
- ▶ **Certification schemes to promote best practice** (e.g. “green” tourism)
- ▶ **Leveraging WFD / Biodiversity protection investments** (e.g. LIFE IP and Regional / Agricultural Funds)
- ▶ **Establishing financial mechanisms** aiming for reaching multiple objectives in sectoral / territorial development (e.g. Rural development programmes, organic farming)
- ▶ **Decoupling subsidies** from production and intensification of drivers (e.g. on-going reforms of the Common Agricultural Policy)
- ▶ **Introducing ex-ante conditionalities and environmental safeguards** into EU financial mechanisms (e.g. cross-compliance requirements on Common Agricultural policy direct payments)



Common Agricultural Policy expenditure change





Rural development programmes

- ▶ **Funding to help the rural areas of the EU to meet the wide range of economic, environmental and social challenges**
- ▶ **RDPs have three overarching objectives**
 - ▶ Fostering the competitiveness of agriculture
 - ▶ Ensuring the sustainable management of natural resources, and climate change
 - ▶ Achieving a balanced territorial development of rural economies and communities including the creation and maintenance of employment



Rural development programmes and WFD: a survey

- ▶ **EC Commission survey on whether**
 - ▶ Funded measures tackle agricultural pressures and contribute to protect and restore the water environment
 - ▶ Fulfil minimum regulatory requirements (e.g. ex-ante conditionalities, cross-compliance,)
 - ▶ Go beyond compliance and offer good practice that can help ensure waters are restored to good status and reduce flood risk

- ▶ **Available at:**
 - ▶ http://ec.europa.eu/environment/water/pdf/EU_overview_report_RDPs.pdf
 - ▶ http://ec.europa.eu/environment/water/pdf/Good_practice_RDP_guidance%20.pdf



Collected evidence

- ▶ 52 RDPs (out of 118), covering a total of 129.3 million ha of agricultural land, including 6.6 million ha of irrigated land, and 113 billion Euros of planned (European and national/regional) public spending
- ▶ All MS were covered, including a selection of RDPs from MS which

RDP chapter	Dimensions assessed
SWOT	Linking with WFD Article 5 river basin characterisation report Reporting of all relevant pressures
Strategy	Selected Priorities and Focus Areas Linkages made with WFD and FD
Measures	Concrete activities being funded Level of targeting in relation to WFD and FD objectives Ensuring synergies and avoiding conflicts
Budget and indicators	Level of ambition in relation to water and flood management



Overall results on level of integration

▶ Progress in integration

- ▶ Compared to the first programming period, rural development programmes of most Member States now present an improved level of integration with water management issues
- ▶ Majority of RDPs are largely consistent with WFD information on the status of water bodies and key nutrient and pesticide pressures, and propose a diverse range of measures to tackle those pressures
- ▶ Good level of commitment to environmental management (in general), as demonstrated by the average RDP budget reserved to environmental priorities



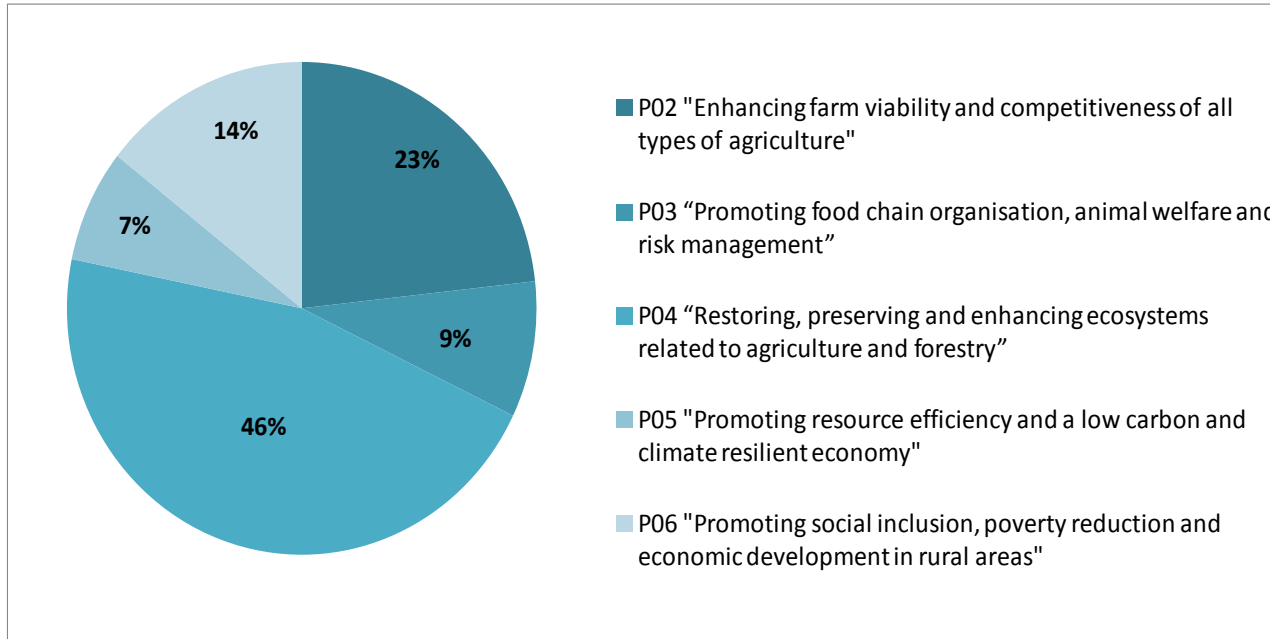
Overall results on level of integration

► Challenges

- Large differences / variation between Member States / regions
- Limited integration on hydro-morphological pressures (especially drainage, embankments, dredging, etc) and flood management
- Limited optimisation of measures to contribute to local RBMP objectives (e.g. spatial targeting)
- Low ambition (especially on irrigation and water scarcity)
- Need better / more explicit links with WFD conditionalities and requirement

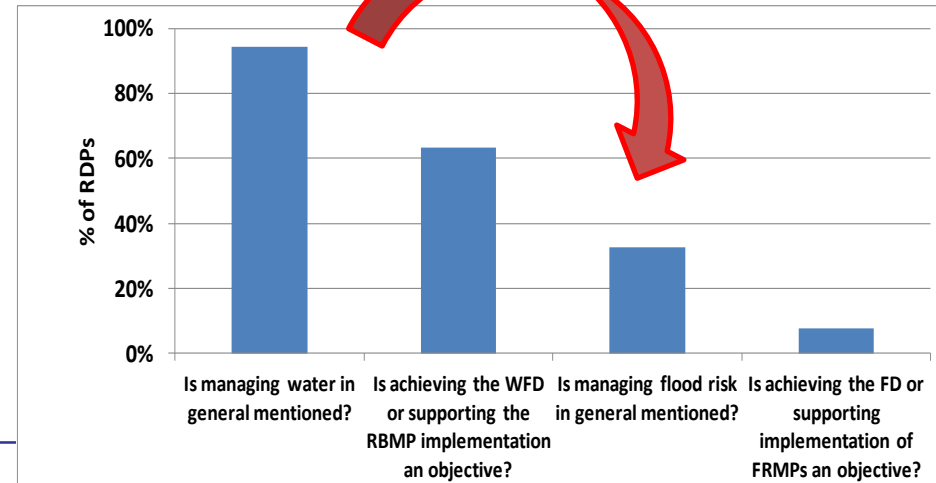
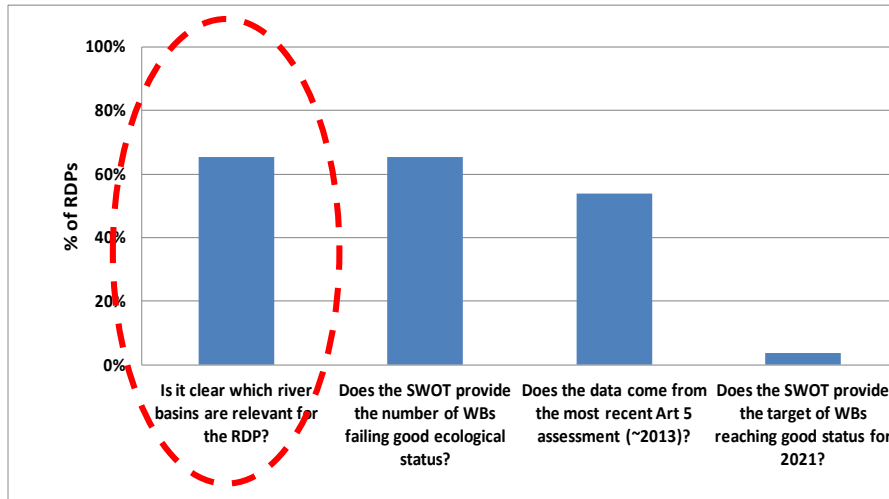


Average budget per priority (% of total budget of RDP, N=52)



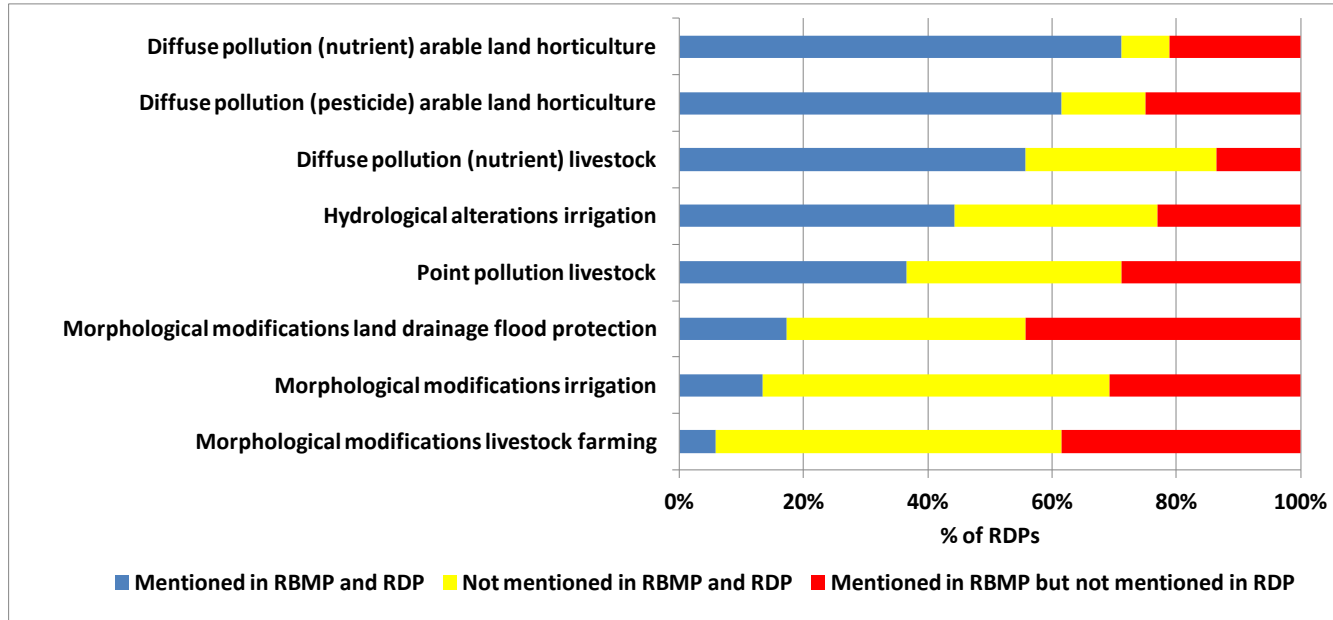


References to WFD implementation in RDP (% of RDPs, N=52)



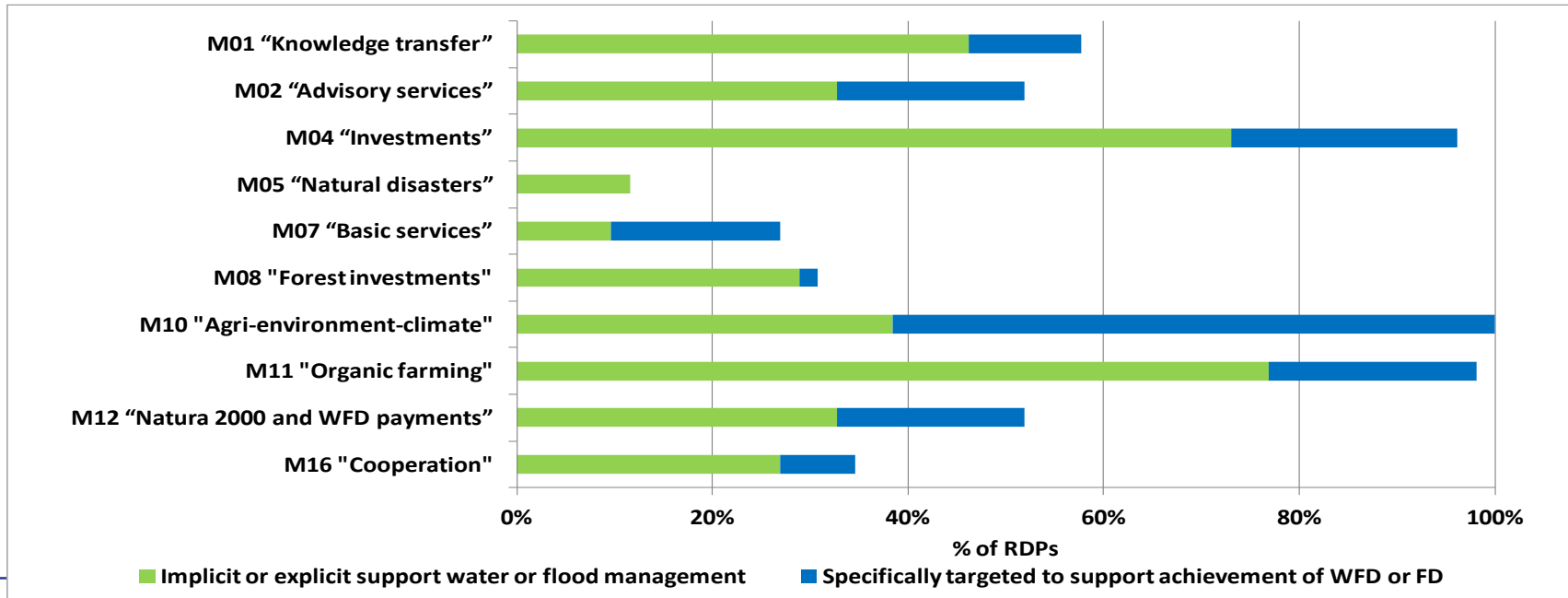


Coherence between RDP and RBMP pressure assessment (% of RDPs, N=52)



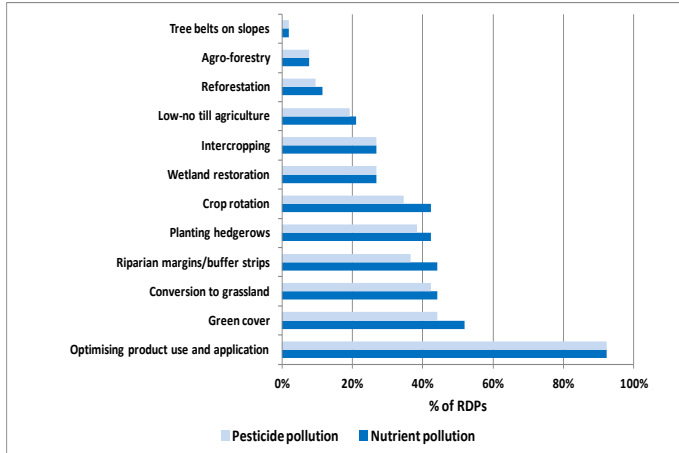


Are measures targeted to support WFD and FD implementation? (% of RDPs, N=52)



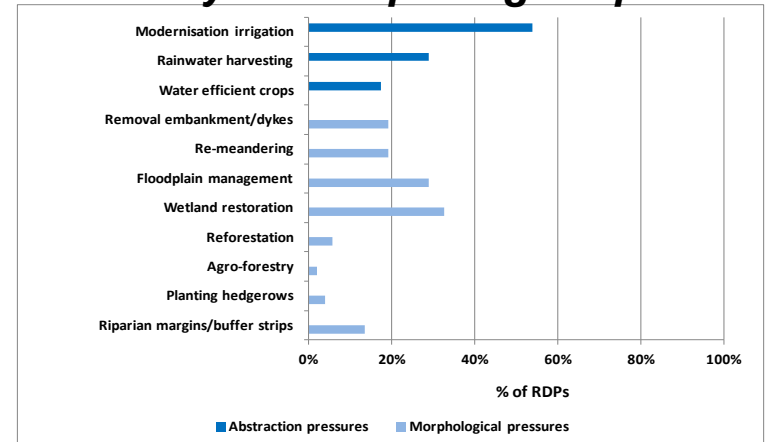


Measures proposed (% RDPs, N=52)



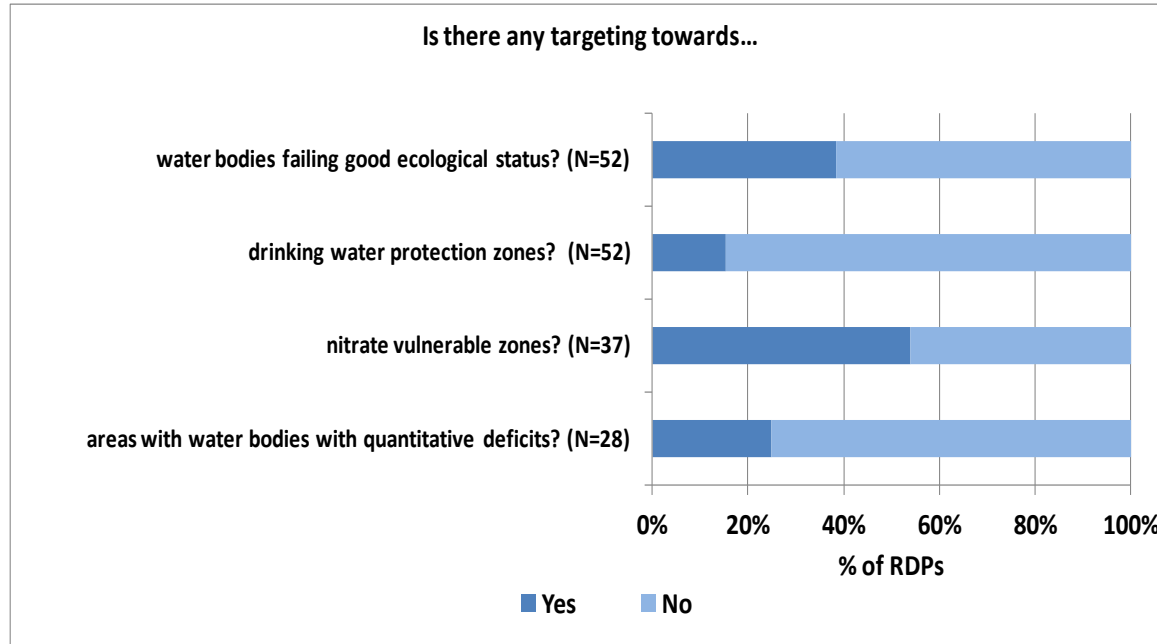
On pollution from arable farming

On hydro-morphological pressures





Use of spatial targeting in RDPs (% of RDPs, N=52)





Meeting legal requirements on irrigation investment

- ▶ Article 46 of the RDP regulation
 - ▶ Investment in irrigation, whether in new or existing irrigated areas, should meet a number of criteria taking into account water body status
 - ▶ Referred to fully in 68% of RDPs which fund the modernisation and/or the expansion of irrigation (19 out of 28 RDPs)
 - ▶ 32% (9 out of 28 RDPs) describe Article 46 but not fully



Meeting legal requirements on new developments

- ▶ Article 4(7) of the WFD
 - ▶ Conditions which must be met before any new developments which may deteriorate water body status are realised
 - ▶ 89% of RDPs funding the expansion of irrigation do not refer to WFD Article 4(7) (25 RDPs out of 28).
 - ▶ 71% of RDPs funding drainage and flood prevention measures do not refer to WFD Article 4(7) (12 out of 17 RDPs)



Are there measures that may maintain and or increase agricultural pressures on water bodies?

- ▶ Expansion of irrigation (50% of RDPs)
- ▶ New land drainage (17% of RDPs)
- ▶ New embankments (14% of RDPs)



References

- ▶ **More results available (e.g. on use of RDP Article 46; integration of WFD Article 4.7; etc) in the following reports**
- ▶ Rouillard, J.J. & Berglund, M. (2017). European level report: Key descriptive statistics on the consideration of water issues in the Rural Development Programmes 2014-2020. European Commission, Brussels, Belgium.
 - ▶ http://ec.europa.eu/environment/water/pdf/EU_overview_report_RDPs.pdf
- ▶ Berglund, M., Rouillard, J.J., Dworak, T. (2017). Guidance on a "Good Practice" RDP from a water perspective. European Commission, Brussels, Belgium.
 - ▶ http://ec.europa.eu/environment/water/pdf/Good_practice_RDP_guidance%20.pdf



Thank you for your interest

Contact: josselin.rouillard@ecologic.eu