



RETERURALE  
NAZIONALE  
20142020

Speed Date Italy – France

LAG of “Pays de Chaumont”

CREA - PB

Rome, 15<sup>th</sup> of December 2017



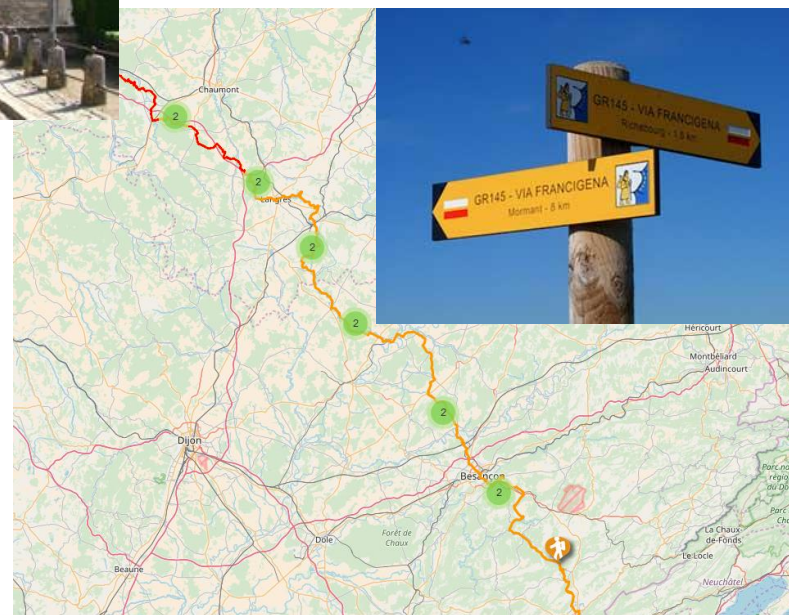
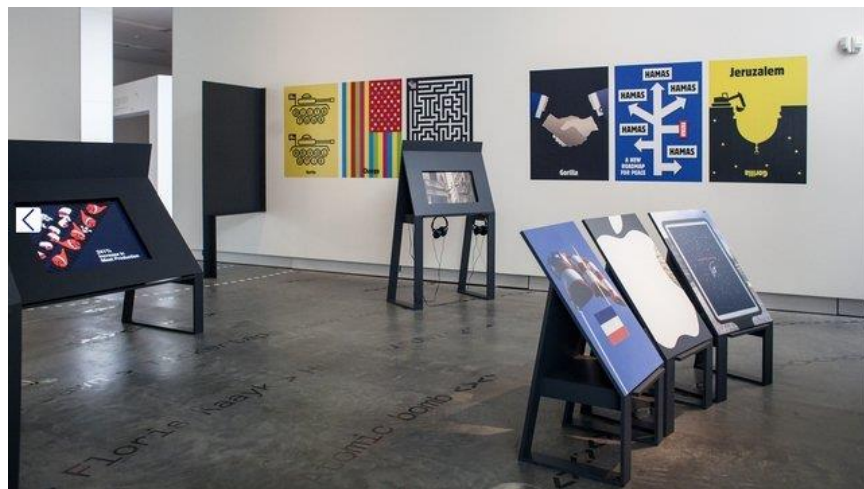
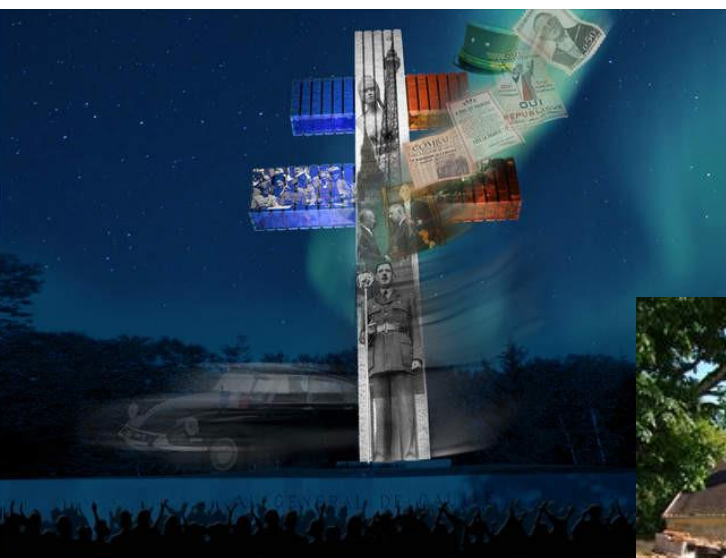


## Description of the territory



- 65 000 inhabitants
- 154 villages or towns
- A density of population of 28 inhabitants per km<sup>2</sup>
- 1 main city : Chaumont (22 000 inhabitants)
- 4 secondary towns (more than 1 500 inhabitants)
- Gastronomy and local products : Champagne, truffles, cheese (Caprice des Dieux), honey, snails, liqueurs, beer, local wines...
- Tourism :
  - Chaumont : International Graphic Art Festival + The National Centre for Graphic Design
  - Colombey-les-Deux-Eglises : Charles de Gaulle Memorial + Cross of Lorraine + Champagne
  - Via Francigena
  - Petites Cités de Caractère ®
  - Champagne Burgundy National Park (under construction)
- Protected environment : wildlife areas (forests, rivers, meadow...)
- Fresh air activities : fishing, hunting, climbing, bicycle touring, pedestrian walkings, deltawing, horse riding, archery, railway cycling and other outdoors activities
- Economy : forestry and husbandry, Metalworking industries, food processing

# Tourism



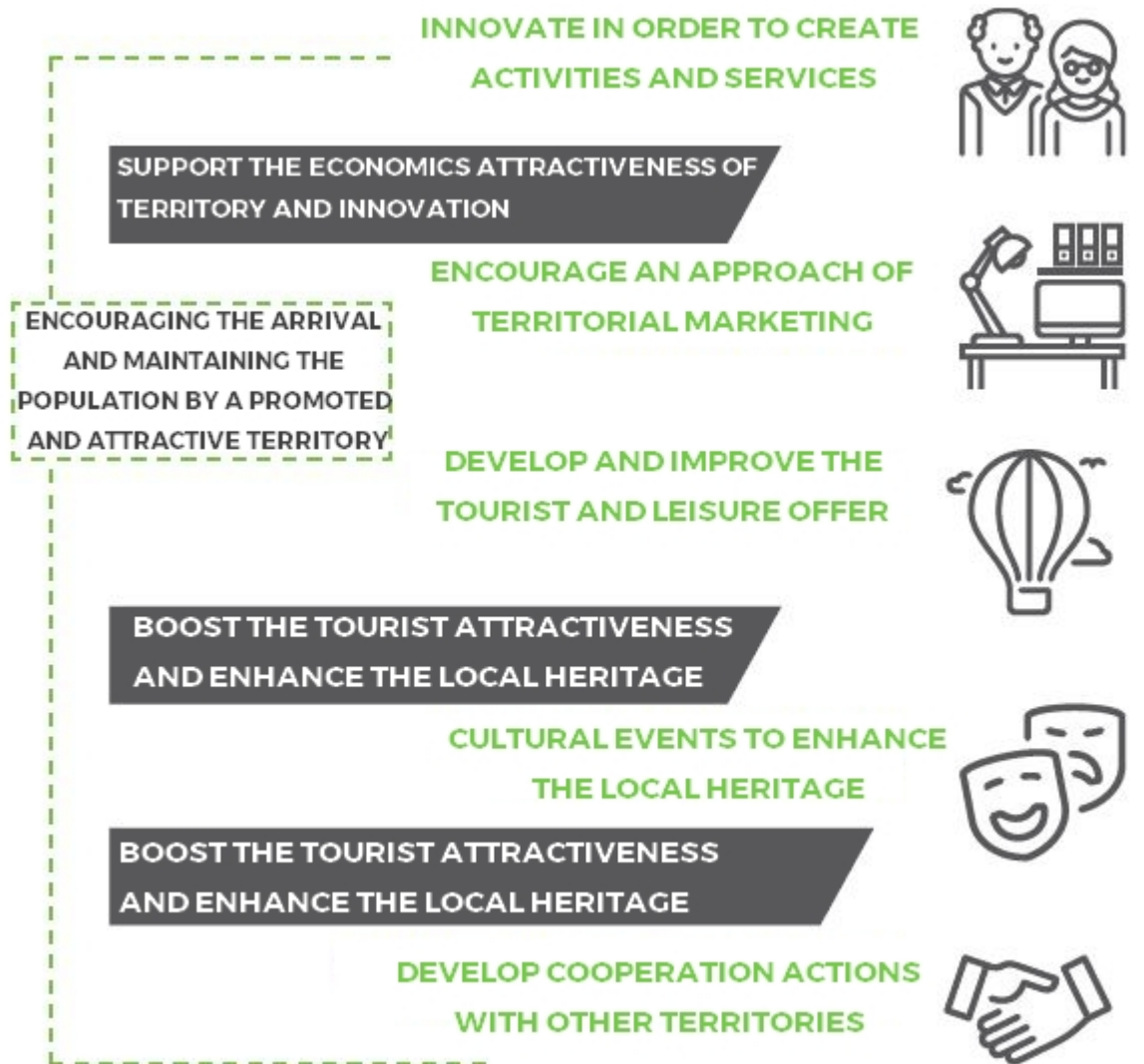
## Protected environment & fresh air activities



# Economy



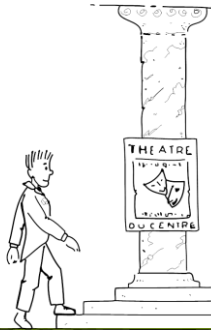
## Description of the strategy



## Description of LEADER cooperation

### Brief description of the cooperation strategy (thematic areas of interest)

- Tourism
- Local food / Gastronomy
- Cultural events



### Brief description of the project ideas

- *Via Francigena* : develop facilities for pilgrim, reinforce the *Via Francigena* visibility (signage, communication...), create new touristic products, develop cultural events, lecture tour, excursion...
- Cultural events in our *Petites Cités de Caractère* \* (festival, concert...)
- Reinforce our summer local produce market (develop and value local quality products)



\* *Petites Cités de Caractère* in Pays de Chaumont : [https://www.youtube.com/watch?time\\_continue=31&v=fbqSusDeEQE](https://www.youtube.com/watch?time_continue=31&v=fbqSusDeEQE)



## Contact details

Name of the LAG: Pays de Chaumont

Oriane KLEIN, director

Address: 40 bis avenue Foch, 52000 CHAUMONT

E-mail address: [oriane.klein@pays-chaumont.com](mailto:oriane.klein@pays-chaumont.com)

Phone number: 00 33 7 86 02 63 79



Contact person for cooperation: Elodie LORIN

E-mail address: [elodie.lorin@pays-chaumont.com](mailto:elodie.lorin@pays-chaumont.com)

Phone number: 00 33 6 48 14 14 35

Website : <http://www.pays-chaumont.com/>

Facebook : /paysdechaumont

