

# Update on the activities of the ENRD Contact Point

Rural Networks' Steering Group

Brussels, 23 October 2017

# Priorities for ENRD CP work

## Capacity building and peer exchange

1. More effective and simpler programme implementation
2. Strengthening NRNs and NSUs
3. Simpler and more effective CLLD



## Thematic work

4. Smart and competitive rural areas
5. Supporting the transition to a green economy in rural areas
6. Responding to demographic change and promoting social inclusion in rural areas



## Cross-cutting activities

RDP Analysis  
Good Practices  
Communication  
Network coordination

## **P1 - Support to more effective and simpler programme implementation**

**Q2**

- Workshop 1: **Moving from compliance to performance based delivery systems** (second half of January 2018 - TBC)

**Q3**

- Workshop 2: **Preparing for the performance review exercise** (End of February 2018 - TBC)
- Workshop 3: **Changes introduced by the Omnibus** (March 2018 – TBC)



Stronger links with thematic work and RDP analysis (depending on topic)



Increase involvement with MAs and PAs



More targeted outputs (events highlights, factsheets, GP examples)

## P2 - Networking

Capacity Building and Peer Exchange

EU-level linkages

Stakeholder involvement

Communication of networking activity

Support for clusters, demand-led initiatives and communities of practice

## P3 – Leader/ CLLD

Major LAG survey

At least two PWGs – relaunched

Two workshops, ‘simplification into practice’ & PWGs

Outreach e.g. joint CLLD event & open days, Lisbon, LINC, ELARD, MS events etc

Cooperation; partner search, fiches, database, events etc

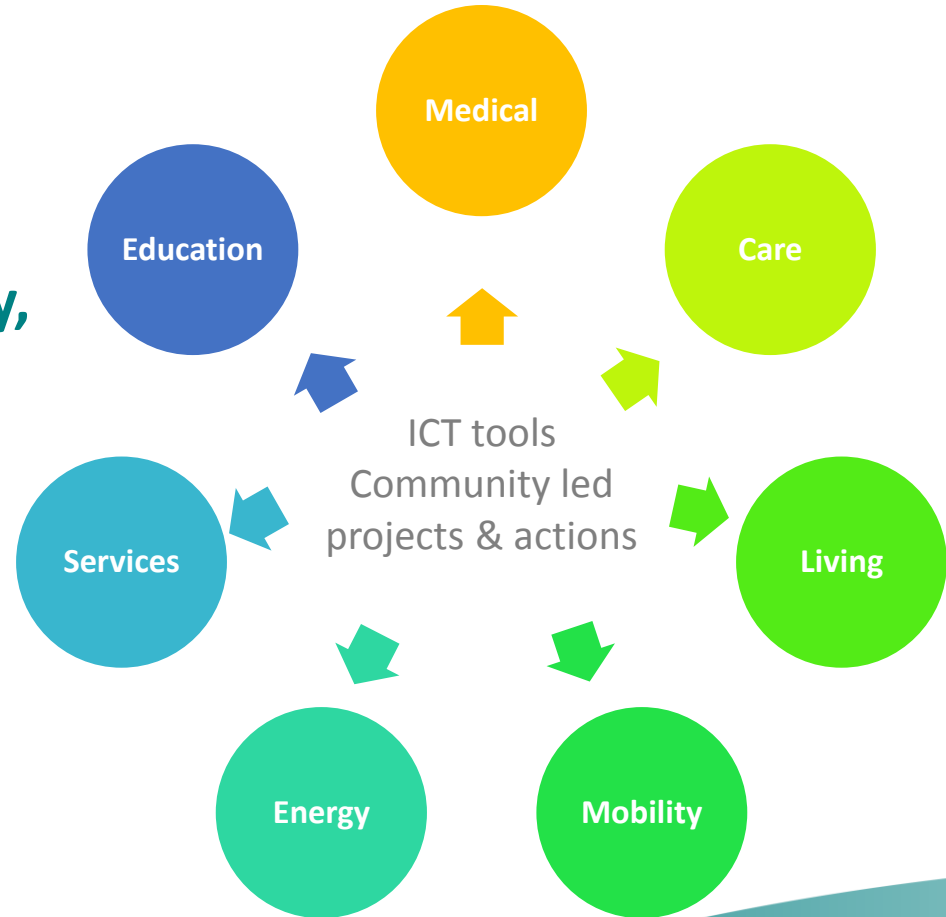
Strengthen info base & analysis

LAG self assessment

## P4 – Smart Villages TG

The TG will explore how rural services in areas such as **health, social services, education, energy, transport, retail and others**, can be improved and made more sustainable through

- a) the deployment of **ICT tools** and/or
- b) by supporting **community led actions** and projects.



## **P4 – Smart Villages TG**

**To share examples of emerging strategies for the revitalization of rural services (digital innovation or social innovation or both).**

**To make recommendations about how the the RDPs can be used to support these strategies in coordination with other policies ( especially M7 Basic Services and M19 LEADER.**

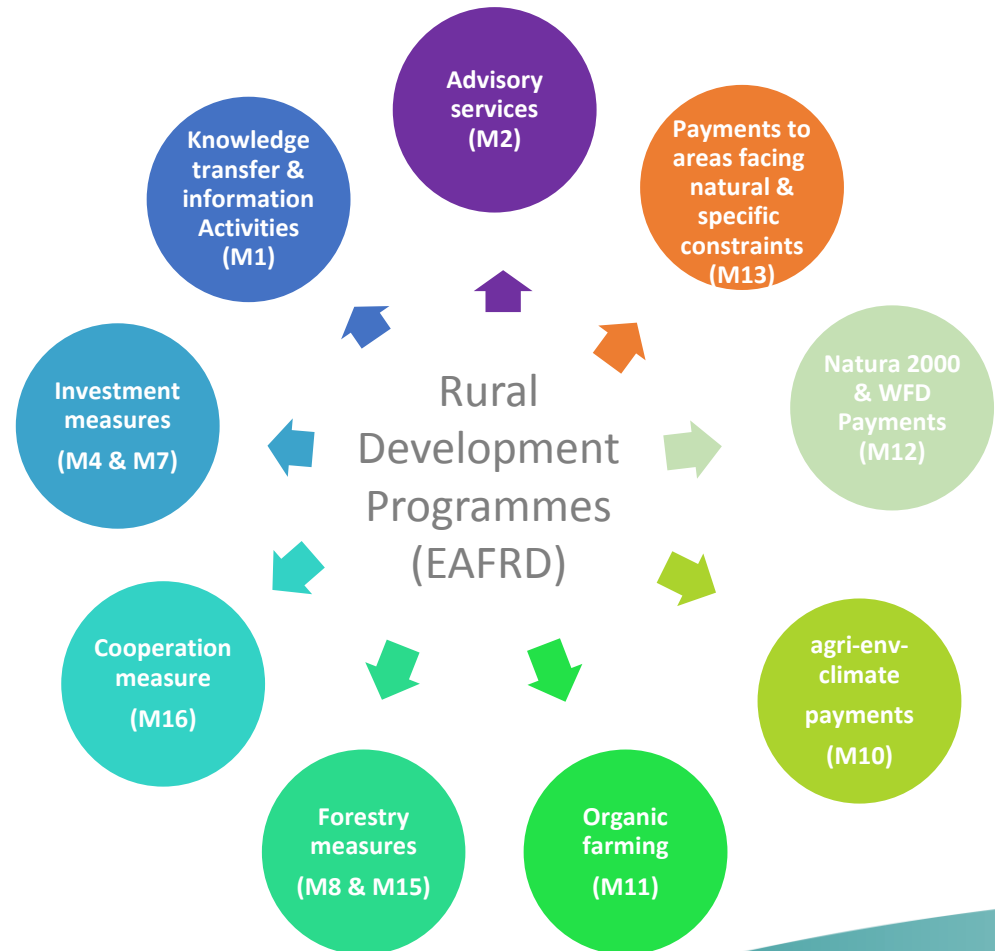
**To provide links to guidance, tools and project examples which can help rural help rural communities improve rural services.**



## P5 – Soil and Water Management TG

The TG will explore opportunities for a **more efficient use of Rural Development Programmes (RDPs)** to support the sustainable management of water and soils.

The aim is to formulate concrete recommendations on how the **design and implementation** of measures programmed under the RDPs can be improved to better address soil protection and water management.



## **P5 – Soil & Water Management TG**

Main focus on: water management, both supply and water quality.

To include: Nutrient Management Plans.

First TG meeting of Y4 used to define the exact scope of the work and the Focus Area(s) and Measures to fall within its remit.

## P6 - Making rural communities attractive and inclusive

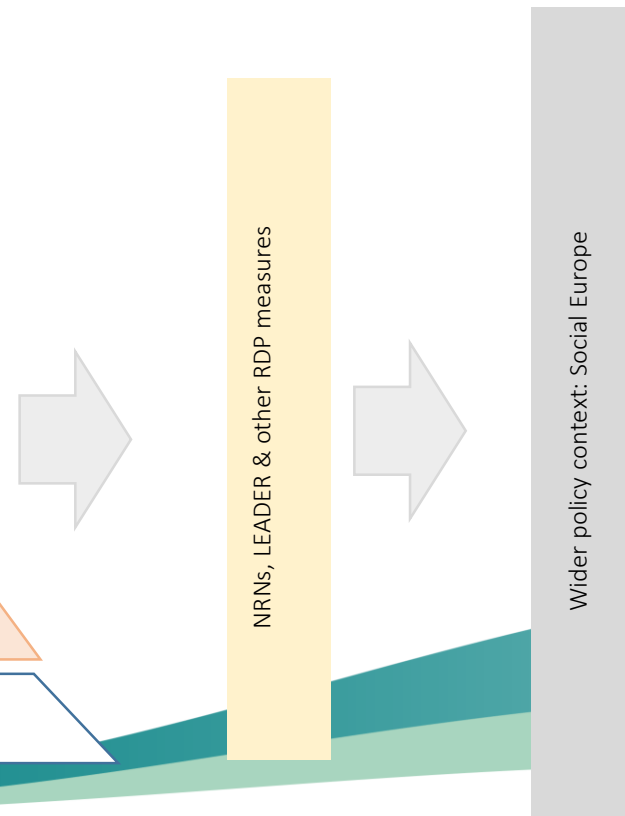
### Hierarchy of needs:

Different rural areas have very different social and demographic needs



### Social proofing:

How to make sure that RDPs & other policies contribute to social inclusion?



## **P6 - Making rural communities attractive and inclusive**

### **OBJECTIVES:**

- To **support stakeholders** in addressing demographic and social inclusion issues in rural areas through the identification of inspiring approaches and practices;
- To **identify ways in which RDPs could most effectively respond** to demographic change and promote social inclusion in rural areas.

### **ACTIVITIES:**

- **5 thematic briefs**
- **Stakeholder discussions** through the online platform of VIIMA
- Supporting **communities of practice** on specific sub-themes
- **Face-to-face meetings** (1<sup>st</sup> meeting with NRNs & other stakeholders in Cyprus, 16 Nov)
- **Background research:** background paper, case studies, etc.

## CAPACITY BUILDING ACTIVITIES

### 1) RDPs

- From compliance to results (WS 2018, TBC)
- Preparing for the performance reserve exercise (WS 2018, TBC)
- Changes introduced by the 'Omnibus' (WS 2018, TBC)

### 2) NRNs

- NRNs + RDP implementation in regionalised countries (WS 2018 TBC)
- NRN Communication (WS-2018 TBC)
- 3 NRN meetings on specific topics (1st in Cyprus 11/17, 2<sup>nd</sup> & 3<sup>rd</sup> TBC)
- Exchange + capacity building with newer networks, toolkit

### 3) LEADER

- Progressing Cooperation & Innovation Practitioner WGs: workshops, factsheets, recommendations and guidance.
- Simplification – WS 2018

## THEMATIC ACTIVITIES

### 4) SMART

- TG Smart Villages. Revitalising rural services through digital and social innovation.
- 4 TG meetings (1st mtg on 26/10/17)
- Seminar (2018)
- Various outputs: Publications, factsheets, website.

### 5) GREEN

- TG Water and soil management, 4 TG meetings (1st mtg on 24/10/17), Seminar (2018)
- Natura 2000 Action Plan (WS 28/09/17)
- Conservation agriculture in drought-prone countries (TBC, 2018)
- Outputs: as above.

### 6) INCLUSIVE

- Social support systems making rural communities attractive and inclusive
- 2 WS (1<sup>st</sup> workshop Cyprus, 2<sup>nd</sup> workshop tbc) + Practitioner WG

# ENRD Communications



## Website

- *Most important communications tool*

## On-line forums and social media

- Thematic – networking – LEADER / CLLD exchanges
- Twitter – ‘what’s happening today’
- Youtube videos

## Publications

- Monthly Newsletter
- Rural Connections – The ENRD Magazine
- EU Rural Review – The ENRD’s Thematic publication
- EAFRD Projects Brochures



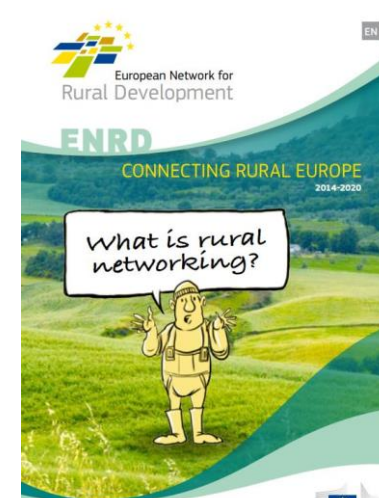
<https://enrd.ec.europa.eu>



<https://enrd.ec.europa.eu>



<https://enrd.ec.europa.eu>



<https://enrd.ec.europa.eu>



Subscribe to ENRD publications by writing to [subscribe@enrd.eu](mailto:subscribe@enrd.eu)

## ENRD Contact Point

Rue de la Loi / Wetstraat, 38 (bte 4)

1040 Bruxelles/Brussel

BELGIQUE/BELGIË

Tel. +32 2 801 38 00

[info@enrd.eu](mailto:info@enrd.eu)

[www.enrd.ec.europa.eu](http://www.enrd.ec.europa.eu)





European Network for  
Rural Development

[www.enrd.ec.europa.eu](http://www.enrd.ec.europa.eu)

### ENRD Contact Point

Rue de la Loi / Wetstraat, 38 (bte 4)

1040 Bruxelles/Brussel

BELGIQUE/BELGIË

Tel. +32 2 801 38 00

[info@enrd.eu](mailto:info@enrd.eu)

Funded by the

