



European Rural Networks'  
Steering Group

# Planned Network Activities

## Upcoming activities of the ENRD Evaluation Helpdesk

Hannes WIMMER, Team Leader

10<sup>th</sup> Meeting of the European Rural Networks' Steering Group  
Brussels, 22 October 2018



POWERED BY





# Needs of our stakeholders



## MAAs

- Preparing for the evaluations in 2019
- Understanding the evaluation requirements
- Get quick replies to evaluation-related queries

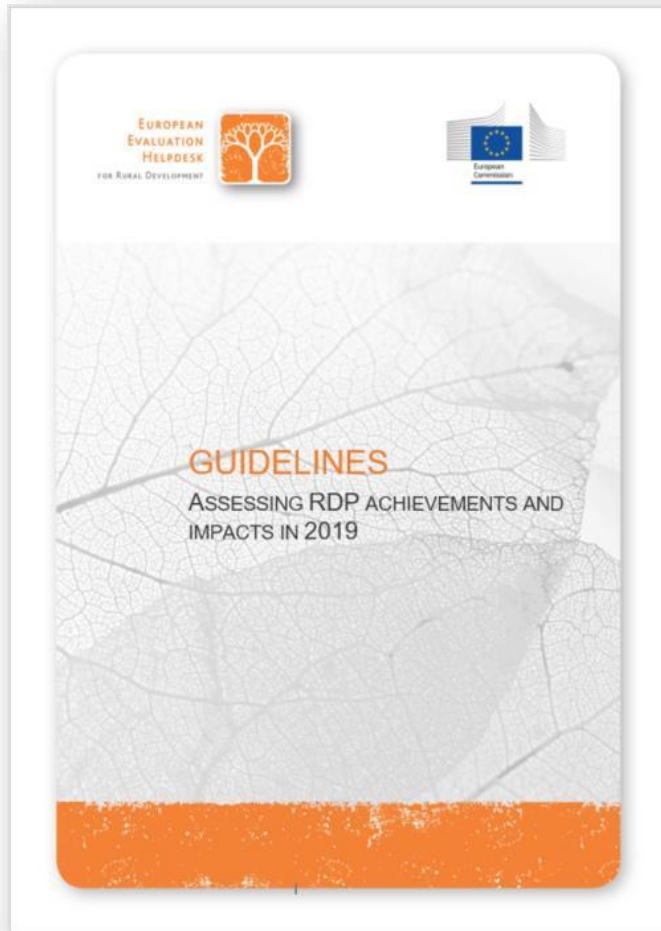
## Evaluators

- Get to know optimal/alternative evaluation approaches
- Exchange about ways to do counterfactual evaluation
- Understand how to net out impacts

## NRN & LAG

- Learn how to support RDP evaluation activities
- Communicate and disseminate evaluation findings

...



## TWG-5. “Assessment of RDP achievements and impacts in 2019“

- How to assess the achievements and impacts of RDPs in 2019?
- Counterfactual / netting out
- How to answer the Common Evaluation Questions no. 22-30?

## TWG-6. “Data for evaluation of impacts”

- Interactive decision tool for assessing RDP impacts

## Working document

- Evaluation-related queries

*Send your questions to [info@ruralevaluation.eu](mailto:info@ruralevaluation.eu)*

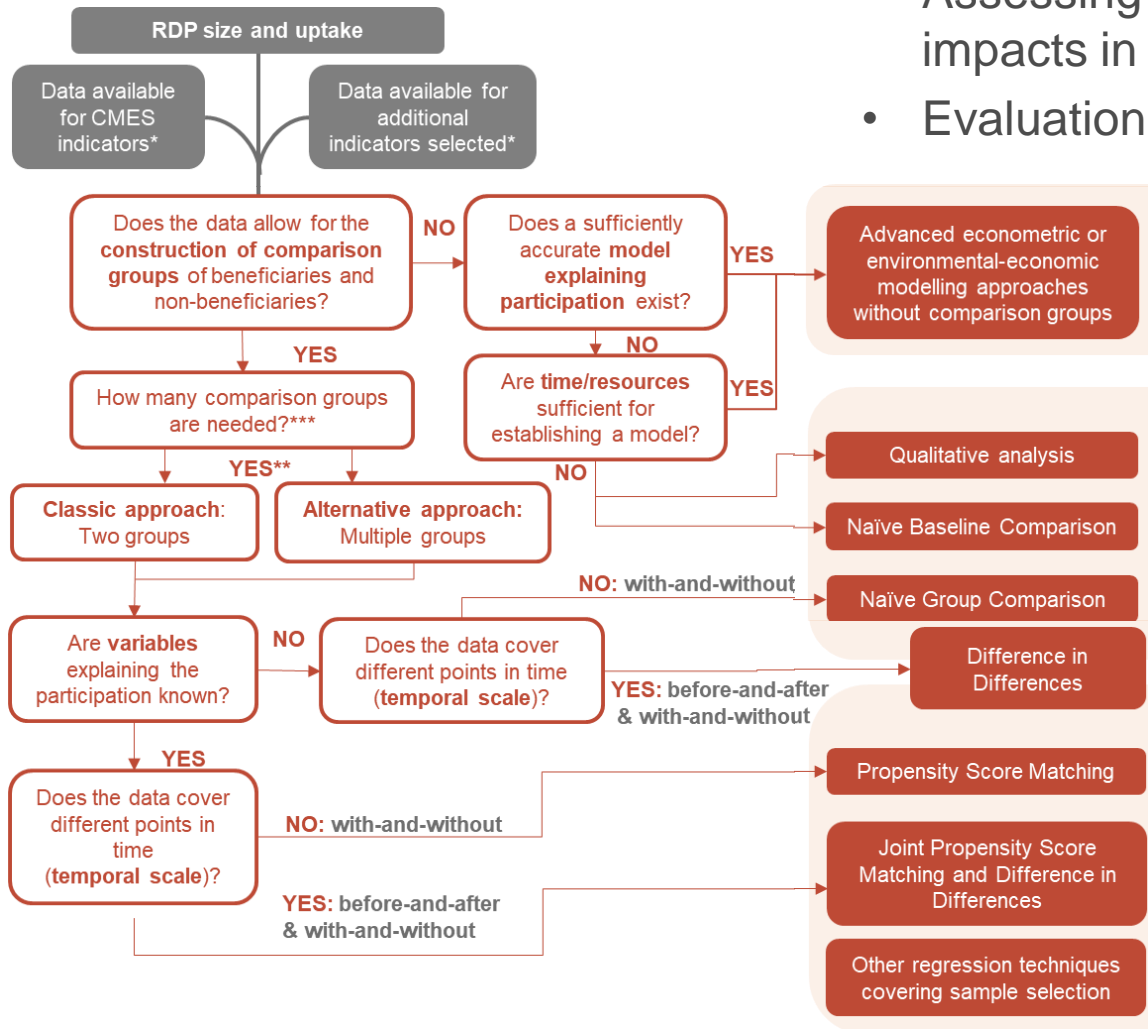




# Building capacities

## Yearly Capacity building events in MS

- Assessing RDP achievements and impacts in 2019
- Evaluation of LEADER/CLLD



*How to choose the most appropriate evaluation approach in a given RDP context?*



# Sharing knowledge

## Good Practice Workshop no. 8

Approaches to assess socio-economic and sectorial RDP impacts

24-25 Oct. in Warsaw (PL)

AT: How to use a sectorial model?

LV: How to use a beneficiary survey for a counterfactual evaluation?

PL: How to use GPSM based on NUTS4-regional data?

GR: How to use a Computational General Equilibrium (CGE) model?

## Good Practice Workshops no. 9

Approaches to assess environmental impacts

12-13 Dec. in Bratislava (SK)



*Send any suggestions for interesting case studies to [info@ruralevaluation.eu](mailto:info@ruralevaluation.eu)*



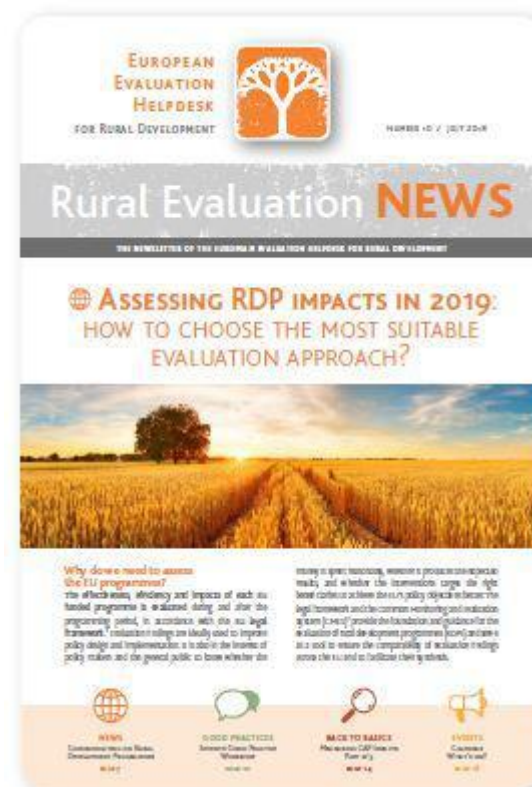
# Sharing knowledge

## Rural Evaluation NEWS no. 11

- Examples of completed evaluations studies
- Measuring CAP impacts (socio-economic)
- New proposals for the CAP 2021-27

## Factsheets

- NRN support to evaluation in CZ (November 2018)
- Evaluation of RDP support on broadband expansion in Sweden (December 2018)



# Timeline



## Providing guidance



Guidelines  
for AIR in 2019



Data for RDP  
impacts



Working document on  
evaluation related queries

## Building capacities



Yearly capacity building  
in Member States

## Sharing knowledge



Good practice workshop  
socio-economic and  
sectorial impacts



Good practice workshop  
environmental impacts



Newsletter no. 11



**What evaluation support  
needs do you see in 2019?**





# Thank you for your attention!

European Evaluation Helpdesk for Rural Development  
Boulevard Saint Michel 77-79  
B-1040 Brussels  
Tel. +32 2 7375130  
E-mail [info@ruralevaluation.eu](mailto:info@ruralevaluation.eu)  
<http://enrd.ec.europa.eu/evaluation>