

# The Austrian Approach to LEADER

## Implementation and Delivery

Christa Rockenbauer-Peirl  
Directorate Innovation, Local Development  
and Innovation  
Rust, 17. October 2018

## LEADER



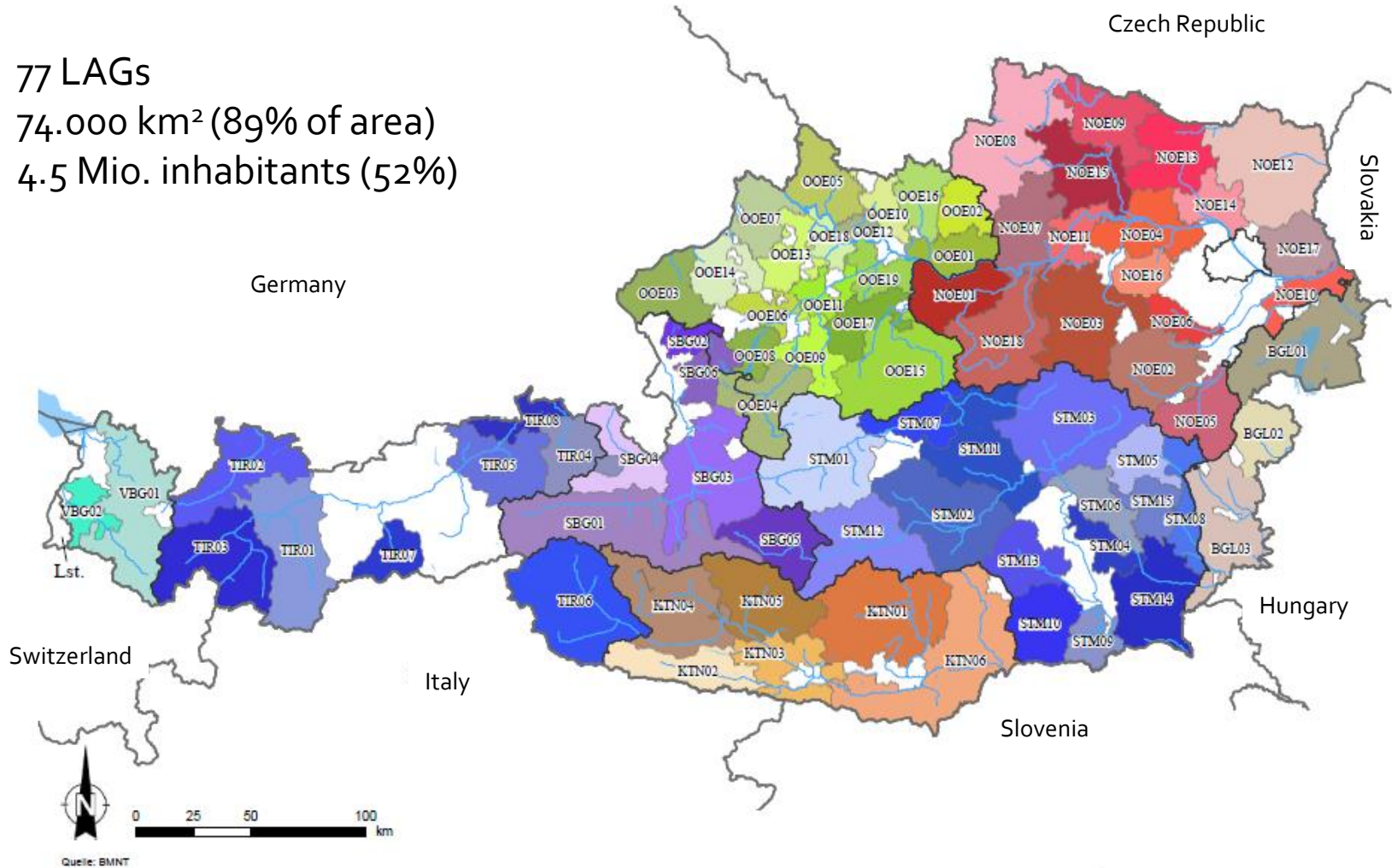
- Austrian Programme for Rural Development 2014-2020:
  - 5% of EAFRD → 247 Mio. €
  - In rural areas
  - CLLD/ multi-funded approach with ERDF is possible

## Austrian Programme for Rural Development 2014 – 2020:

77 LAGs

74.000 km<sup>2</sup> (89% of area)

4.5 Mio. inhabitants (52%)

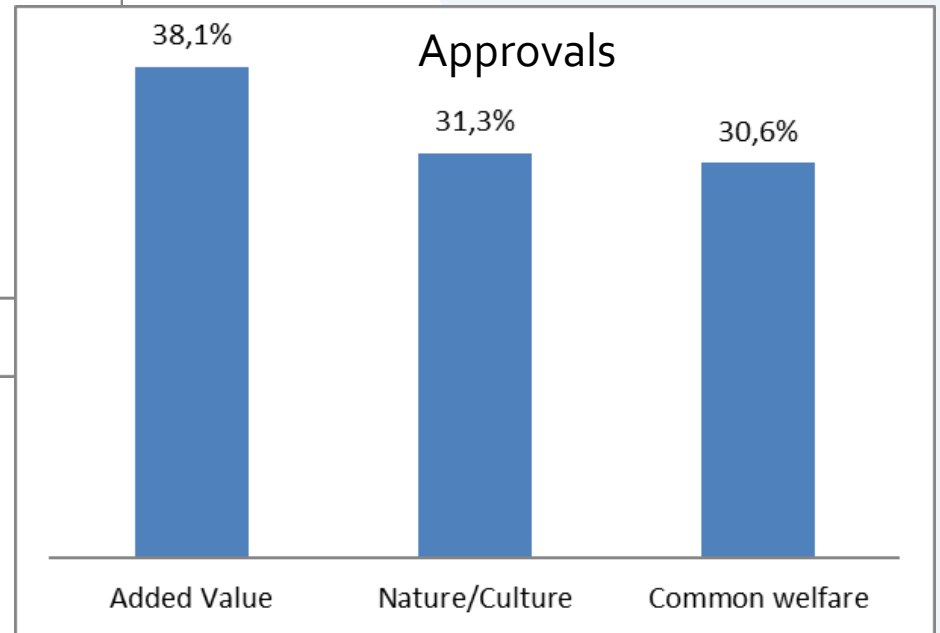
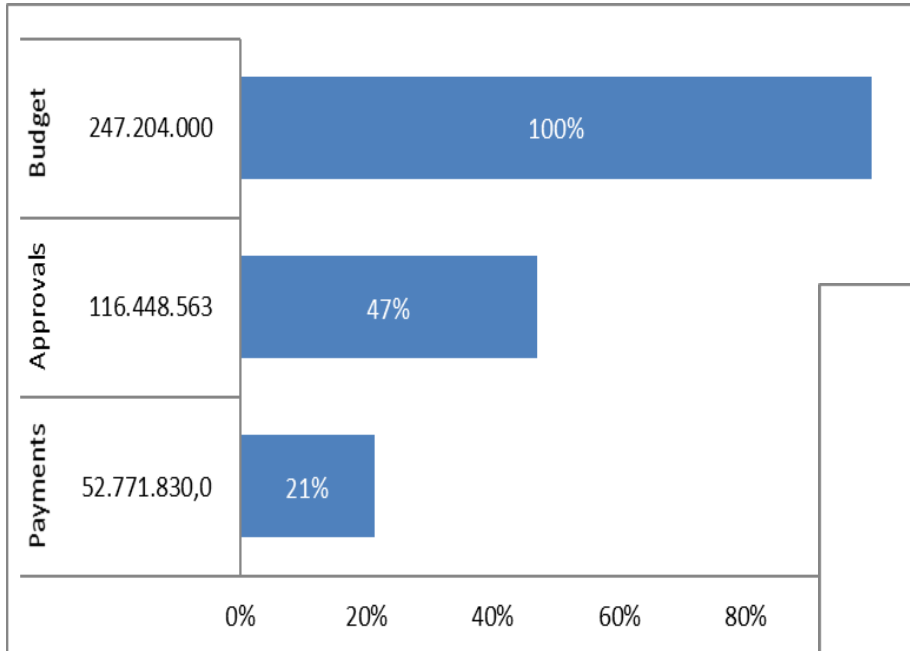


## Thematic structure in LDS

- **Added value**
  - Agriculture and forestry
  - Tourism, Economy, SME, commerce
  - Energy production
- **Natural resources and cultural heritage**
  - Nature and ecosystems
  - Culture
  - craftsmanship
- **Common welfare**
  - Basic services, local supply
  - local learning, participation



## Implementation (Sept. 2018)



## Bottom up Approach

- **Allocated Budget**
  - Average approximately 3 Mio. € / LAG (EAFRD+ national co-financing)
  - 9 multi-funded LAGs (ERDF): plus 1.35 Mio. € average
  - LAG: indicative allocation to thematic headlines in LDS
- **LAG structure**
  - Percentage of interest groups corresponding to Regulation 1303/2018
  - Composition of project selection board: at least 1/3 women
  - Professional LAG-management (at least 60h full time equivalent employed at the LAG)
- **Project selection**
  - Project criteria approved with LAG selection
  - Amount of support fixed in LDS for project categories

## Managing structures and key players

- **Managing authority EAFRD:** Federal Ministry of Sustainability and Tourism
- **Paying Agency:** Agrarmarkt Austria (AMA)
- **Administration of applications of support and payment claims:** Provinces (delegated tasks by paying agency)
- **National Cofinancing:** Federal Ministry of Sustainability and Tourism, Provinces
- **Managing Authorities for ERDF (IGJ, INTERREG)**
- **LEADER-Forum:** association of all 77 LAGs
- **NRN:** Netzwerk Zukunftsraum Land

## Decision making - processes

- **LDS-Selection board:** all Managing authorities, Provinces, Advisory: NRN, Paying Agency
- **Management and strategic questions:** regular meetings (app. 4 / year) with managing authority, Paying Agency, Provinces, LEADER-Forum, sometimes NRN
- **Administration:** LAGs -> Provinces -> Management Authority, Paying agency
- **NRN yearly program:** NRN, LEADER-Forum, Management Authority, Provinces delegate

### ➤ **Cooperation and Communication are the key factors!**

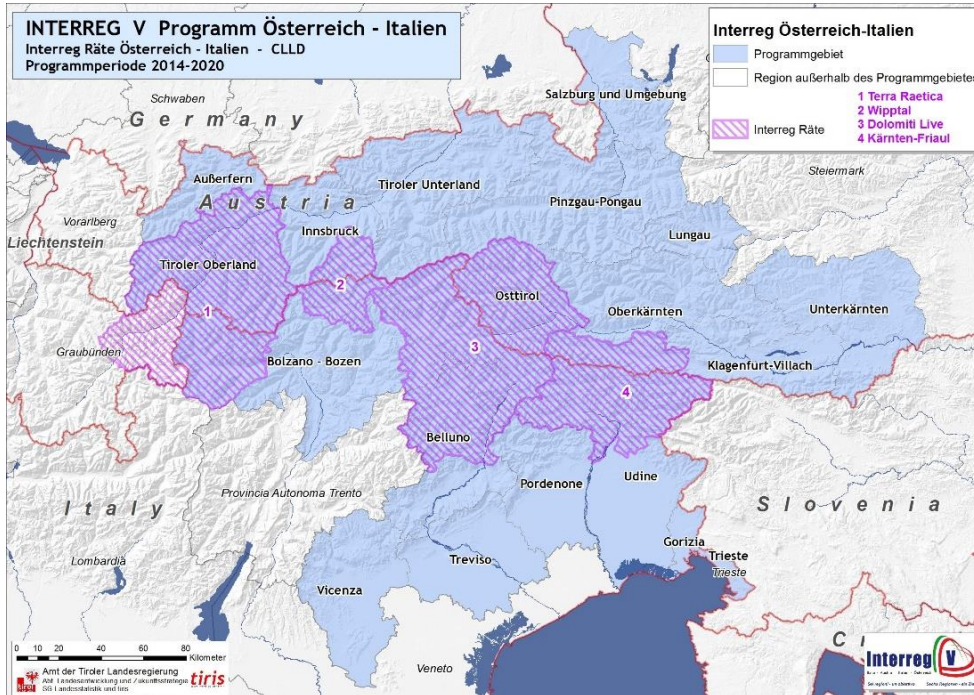
- Regular meetings with all players
- Information transparency



## Simplification

- Lump sum for small projects up to 5.700 € total costs (19.2.1):
  - non-profit, total 5% of LAG Budget maximum
- Flat rate for indirect costs for running costs and animation (19.4.1):
  - 15% of eligible direct staff costs
- Reference costs for some types of costs (rooms, print, experts)
- Facilitations regarding checks reasonableness of costs (Reg. 809/2014) are possible:
  - Projects up to 5.000 €
  - Umbrella projects for specific topics (basic services, culture, environment): up to 200.000 € eligible costs per umbrella, 50.000€ per project

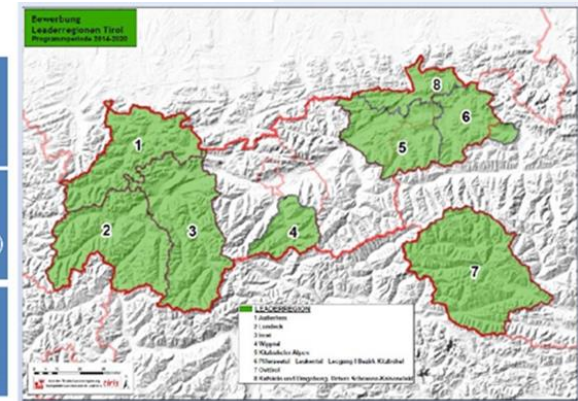
## CLLD/ Multi-funded in Austria



- Multi-funded - additional to EAFRD: ERDF-Programmes
- 4 LAGs with IGJ (Tyrol)
- 4 LAGs with ETC and IGJ (Tyrol)
- 1 LAG with ETC (Carinthia)

### Funding for CLLD

- ERDF – c.€7.8 million
- ETC ERDF – €4.5 million (share for Tirol)
- EAFRD – c.€26 million



## CLLD/multi-funded in Austria

- One LDS for all programmes, selection committee with all relevant managing authorities
- One joint official letter of approval to selected LAGs
  - Allocation of EAFRD and ERDF (Investment for growth and jobs)
- Allocation of ETC-Funds by the competent managing authority after selection of INTERREG Regions
- EAFRD is lead fund and supports running costs and animations
- Joint annual Report of LAGs to EAFRD-managing authority (finances, projects, outcomes)
- One Stop shop for more programs: avoiding double structures on local level
  - **Regular meetings, cooperation and coordination is crucial**

## LEADER post 2020

- Discussions with all partners starting in autumn 2018, working groups
- First Ideas and Questions
  - Position paper of LEADER-Forum
  - Simplification: SCOs, questioning each provision in terms of administrative effort
  - Higher strategic focus in LDS?
  - More focus on projects with added value for the whole region?
  - Extension of CLLD-multi-funded approach?
  - Governance: right balance of bottom up and top down?
  - Integration of Smart Villages?

# Strengthen LEADER for the Future!



Christa Rockenbauer-Peirl  
VII/6, Innovation, Local Development and  
Cooperation  
[christa.rockenbauer@bmnt.gv.at](mailto:christa.rockenbauer@bmnt.gv.at)