

Sarah Brühl | Municipality of Betzdorf-Gebhardshain

The community as a (digital) networking agency





Germany

56 Mio.

in rural areas

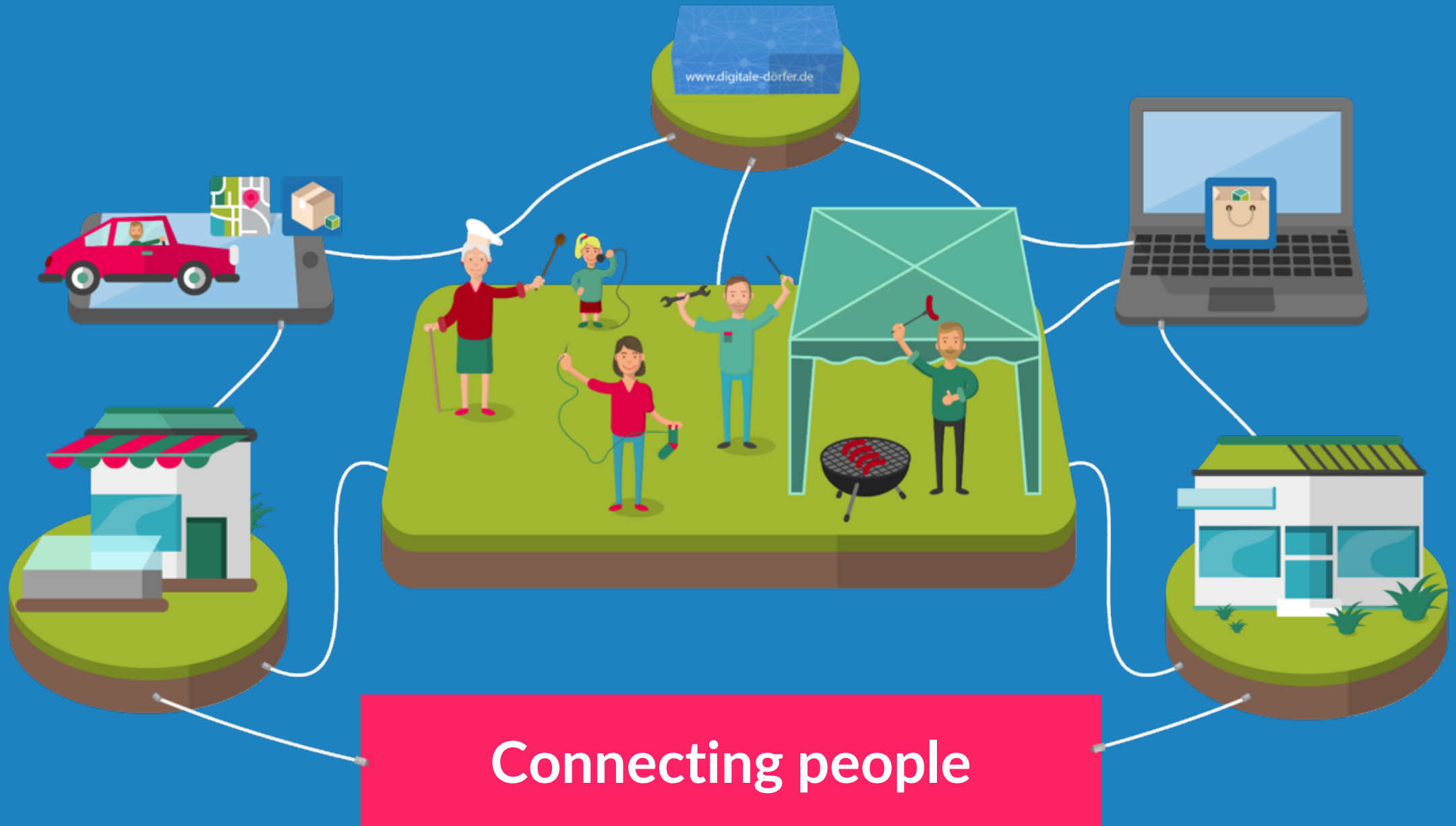
Betzdorf-Gebhardshain

km² **73,5** **26000** Einwohner



50°47'16"N

7°52'25"E



Connecting people



What works for us:

- Local contact persons
- Trust & Enlightenment
- Recognizing people's needs
- Permanent involvement of trend leaders
- Trial and error

Our best practices

- Communicating (success and results)
- Networking!
- Involve all stakeholders
- Digital council
- Professional support





Sarah Brühl

Project Coordinator
“Digital Villages”/“Betzdorf digital”

+49 2741 / 291-125
sarah.bruehl@vg-bg.de

fb.com/Betzdorfdigital
twitter.com/betzdorfdigital

Municipality of Betzdorf-Gebhardshain, Germany

