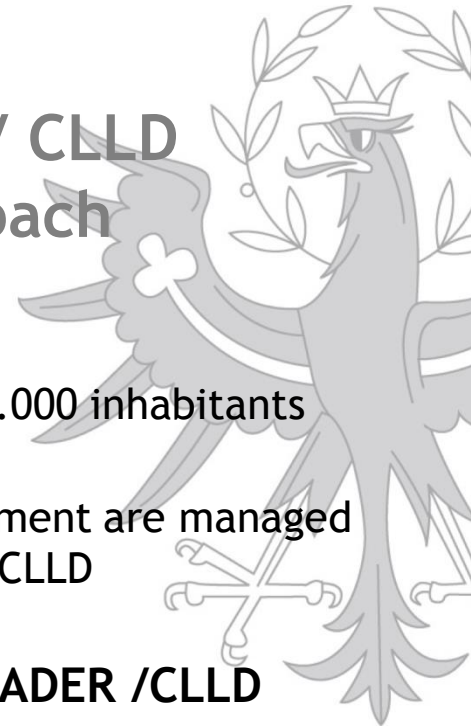




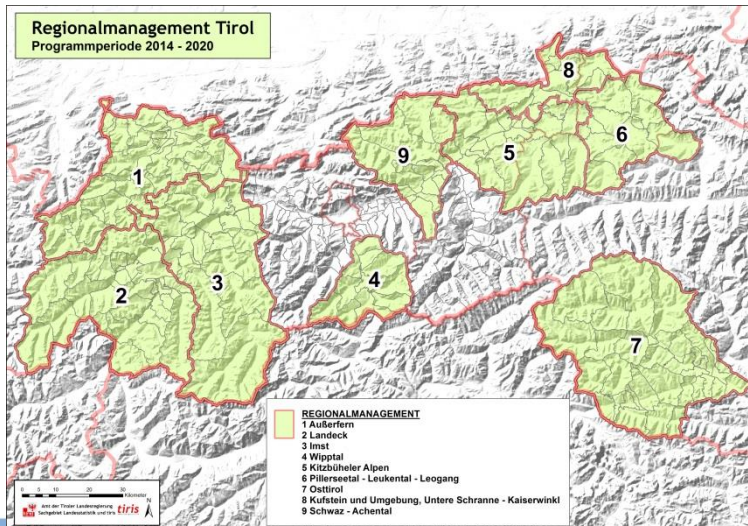
# Tyrol/ Austria - using the LEADER/ CLLD method for an integrated approach



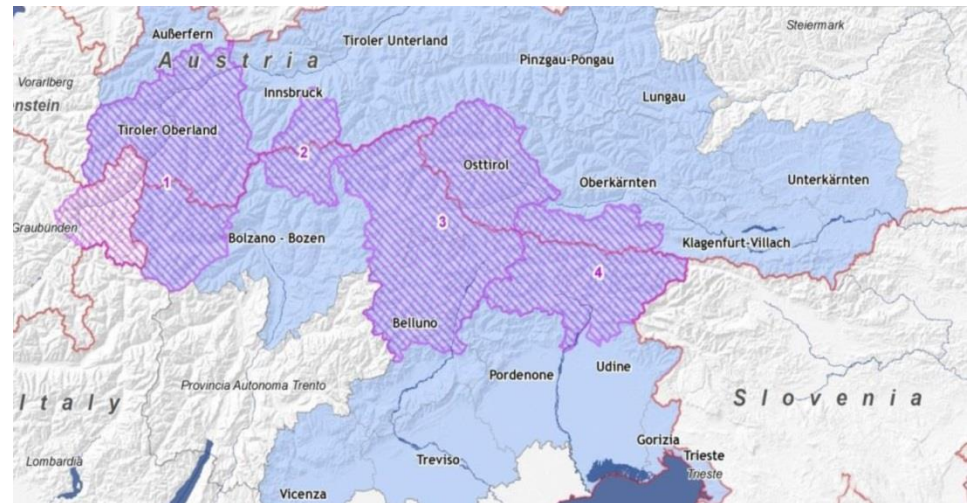
Tyrol is one of 9 Austrian regions

- It is divided into 9 districts with an average of around 75.000 inhabitants outside the capital of Innsbruck
- All EU and national programmes related to local development are managed through local partnerships according to the principles of CLLD

## Domestic LEADER/ CLLD

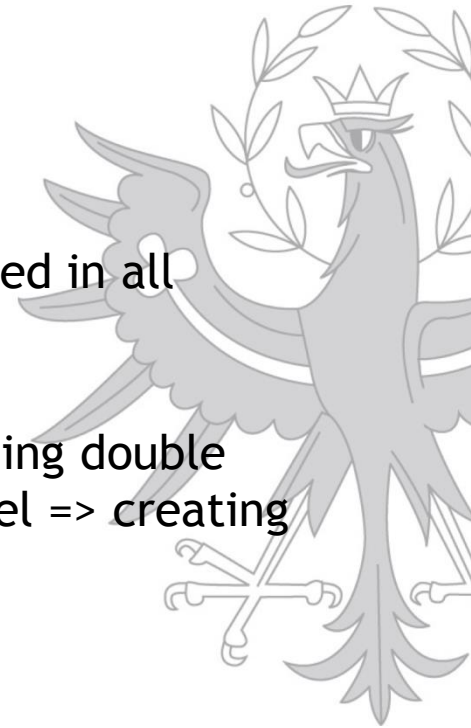


## Crossborder LEADER /CLLD



## Actual situation in Tyrol

1. Platform of all relevant stakeholders on local level involved in all programmes established at local level
2. One stop shop for management of all programmes - avoiding double structures on local level and coordination on regional level => creating linkages
3. Governance of policy makers
  - One department ensures cooperation between regional and local level - working towards the same goal
  - Innovation on local level leads to innovation at regional level
  - Regional level is assisting local initiatives
4. Governance of implementers
  - Streamlining different initiatives, programmes and funds



**Conclusion: EU tools and programmes were crucial for the success**

# Example: rural urban linkages in combination with SMART villages



## Main achievements

1. Common strategy and management of 14 villages and 1 city since 2013
  - Platform for ongoing integrated development in the area to foster competitiveness, create income and synergies between the partners
2. Local ownership of broadband infrastructure (300 Mbits/ 5 G)
  - - Creating a business-model and open sharing for telecom companies
3. SMART solutions
  - Common local management of water resources, mobility, smart buildings
  - Common strategy for business development including splitting the taxes between the villages

# What is missing and how to get there



1. Integration of different funds in one programme (as in LEADER I + II)
  - Rules of LEAD Fund and earmarking the different funds
  
2. Multilevel Governance
  - One MA or lead MA within joint monitoring committee
  - Partnership between EU - national - regional and local level
  - Takes time and will not be sustainable within one EU programming period
  
3. Minimum funding for integrated local development must be mandatory for all funds
  - Helping to overcome monosectoral thinking towards an integrated approach
  - Additional incentives for more cooperation
  
4. Flexibility regarding the area and partners
  - SMART solutions needs external input and partnerships



## Contact

**Martin Traxl**

Region of Tyrol - Unit EU regional policies

Tel.: +43-512/508 - 3618

E-Mail: [martin.traxl@tirol.gv.at](mailto:martin.traxl@tirol.gv.at)

