



Cronfa Amaethyddol Ewrop ar
gyfer Datblygu Gwledig:
Ewrop yn Buddsoddi mewn Ardaloedd Gwledig
European Agricultural Fund for
Rural Development:
Europe Investing in Rural Areas

Llywodraeth Cymru
Welsh Government



Llywodraeth Cymru
Welsh Government

Wales RDP 2014-20: Supporting the Green Economy

Dr Kevin Austin

Head of Agriculture Strategy and Policy Unit
Welsh Government



Wales RDP Programme : Headline Objectives

- Increase the productivity, diversity and efficiency of farming and forestry businesses, improving their competitiveness and resilience, reducing their reliance on subsidies
- Improve the environment, encouraging sustainable land management practices, the sustainable management of our natural resources and climate action
- Promote strong, sustainable rural economic growth and encourage community-led local development

Wales RDP Programme Budget €1.12billion

Human and social	£104,865,475	11%
Investment	£142,998,374	15%
Agri-environment and Climate	£562,460,275	59%
Local development	£104,865,476	11%
Technical Assistance	£38,132,898	4%
	£953,322,498	



Cronfa Amaethyddol Ewrop ar
gyfer Datblygu Cwledig
Ewrop yn Baidoddol i rewi Ardalau Cwledig
European Agricultural Fund for
Rural Development
Europe Investing in Rural Areas



Llywodraeth Cymru
Welsh Government

Generating Green Growth through Investment in businesses and people

- Sustainable Production Grant
- Timber Business Investment Grant
- Small Investment Grants (see Grass roots approach)
- Farming Connect – Knowledge Transfer and Innovation scheme
- FC Knowledge Exchange Hub support the development of the Wales EIP.

Mainstreaming agri-environment, forestry and organic interventions into the Economy

Encompassed within our Glastir suite of schemes including:

- ❖ Advanced
- ❖ Commons
- ❖ Woodland Creation
- ❖ Small Grants
- ❖ Organics

Vision is to ensure expenditure is aligned with our core objectives and can become self sustaining

A “Grass roots” approach to Green Growth

LEADER/Rural Community Development Fund

Local infrastructure e.g. community transport

Small scale renewables

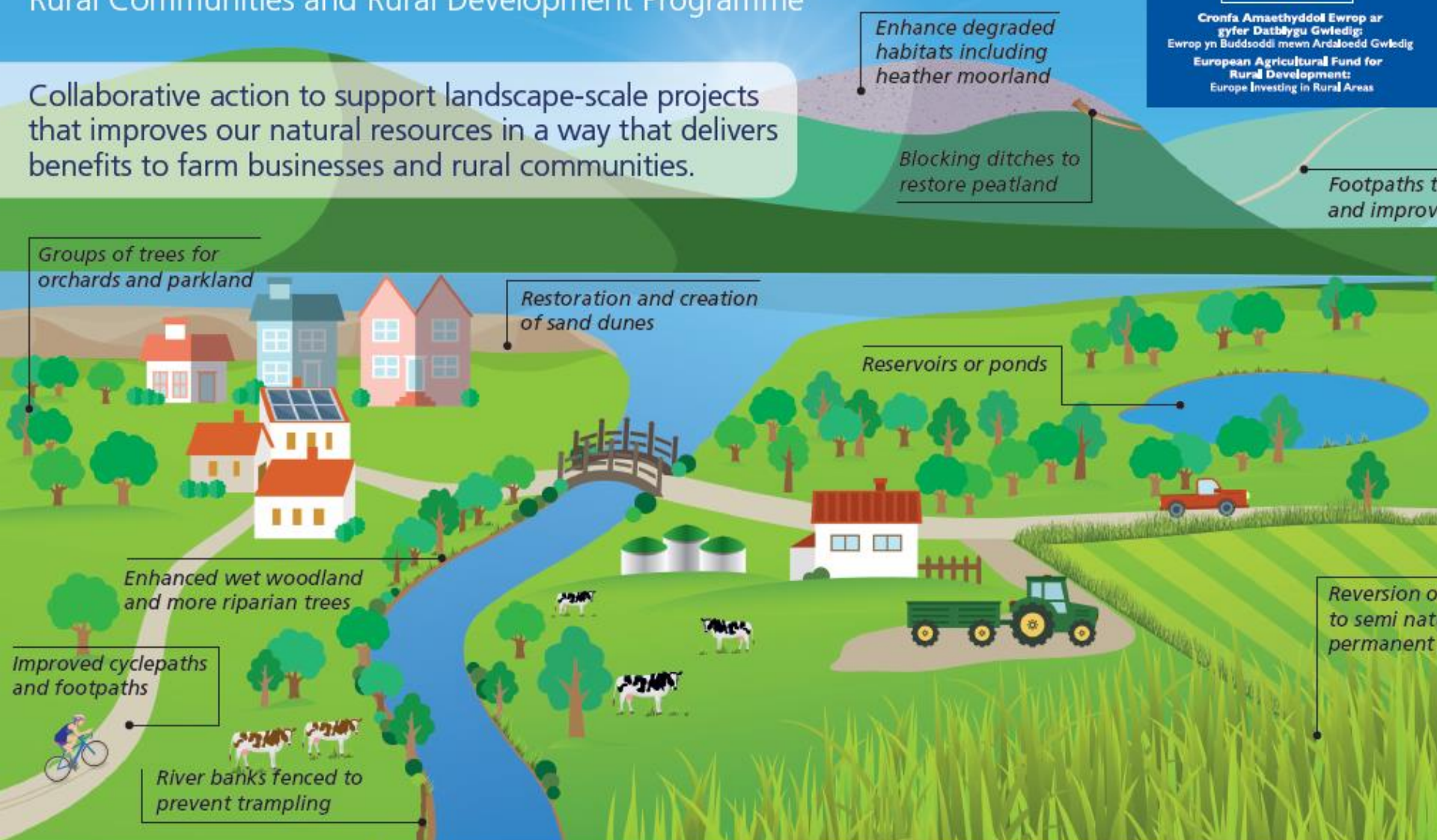
Energy efficiency initiatives

Co-operation and Supply Chain Development Scheme

Sustainable provision of biomass

Strategic Initiatives – Industry Led approach

Collaborative action to support landscape-scale projects that improves our natural resources in a way that delivers benefits to farm businesses and rural communities.



Collaborative actions undertaken with a view to mitigating or adapting to climate change and/or landscape-scale, land management work for the sustainable management of natural resources.

Communication and dissemination of project approaches, lessons and outcomes; dissemination of information amongst communities and other interested parties.

Research, technical advice and feasibility studies – for technical assessments of the area involved, or understanding of the new market being targeted.

Development and Coordination – development of groups, partnerships and management of projects.

Monitoring – activities, outcomes, actions, impacts