



# Palopuro agroecological symbiosis

Efficient resource use by land managers and other rural businesses

Presented by Kari Koppelmäki

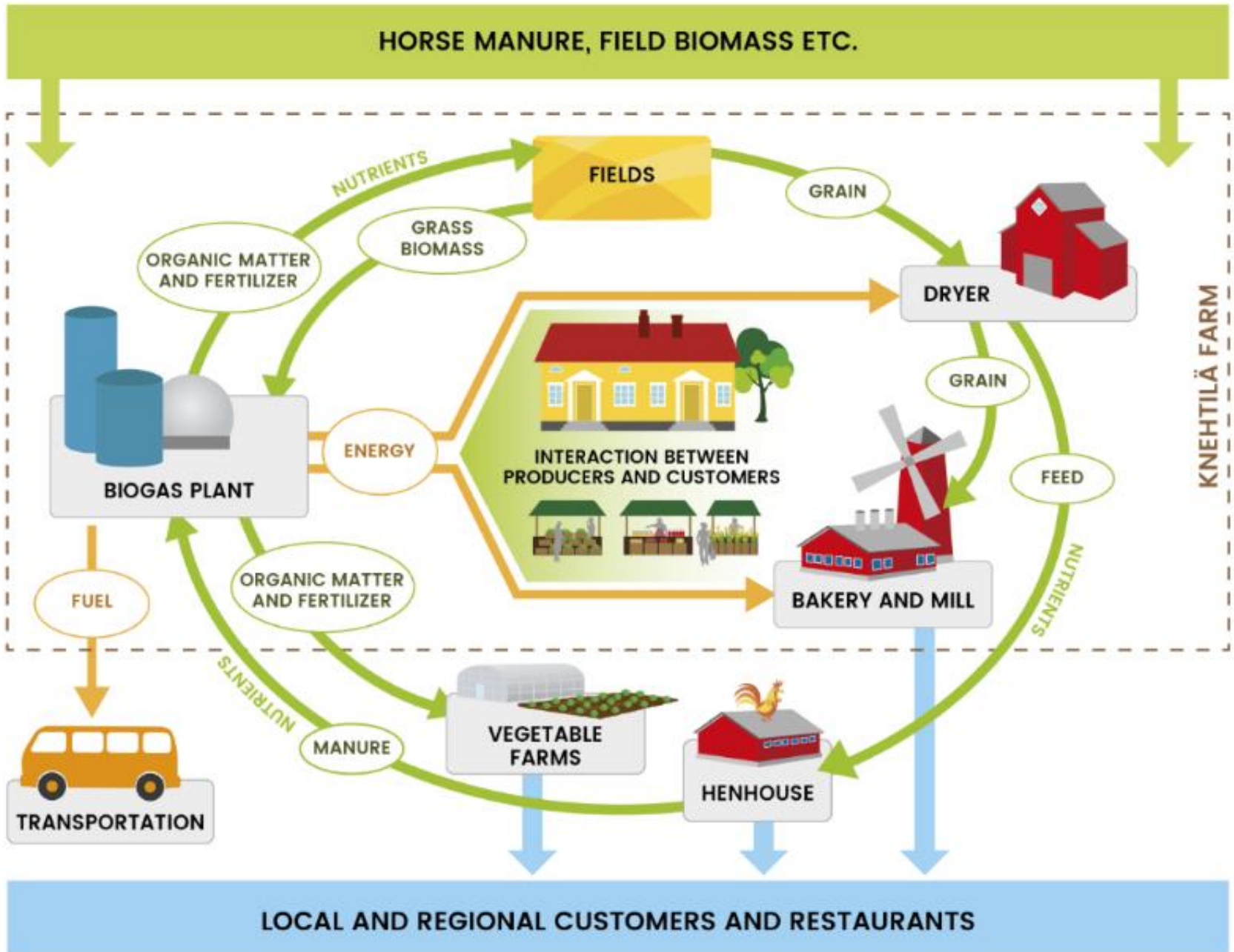
ENRD SEMINAR “Changing our Mindsets -  
Seizing opportunities in the Green Economy”

Brussels, 1 July 2016

An aerial photograph of a farm complex. The farm consists of several buildings, including a large barn with a gabled roof, a smaller house-like structure, and a long, low shed. The buildings are surrounded by fields and a dense forest in the background. The text "Agroecological symbiosis?" is overlaid in the center of the image.

# Agroecological symbiosis?

# Palopuro Agroecological Symbiosis



# Increased efficiency in use of resources

- Added value in grain production
  - Baking quality grain from the fields baked to bread in the farm
  - Feed quality grain to the henhouse
  - Losses from the mill and the bakery can be used in henhouse
- Biogas from green manure leys, fallows, and manure
  - Renewable energy used in baking, grain drying and for sale to 130 passenger cars
  - Organic fertilizer for 150 hectares
  - More carbon to soil
- Increase in social resources and countryside viability



# Why cooperation?

- Agronomical benefits
- Enables investments
- New sources of income from energy sales
- Better price for the products
- Social aspects
  - Increased viability



# The need of RDP and challenges

- High investment costs and risks
- Cooperation between stakeholders from different sectors and RDP?
- Innovations and RDP?



**Kiitos  
(Thank you!)**



HELSINGIN YLIOPISTO  
HELSINGFORS UNIVERSITET  
UNIVERSITY OF HELSINKI

MAATALOUS-METSÄTIETEELLINEN TIEDEKUNTA  
AGRIKULTUR-FORSTVETENSKÄPLIGA FAKULTETEN  
FACULTY OF AGRICULTURE AND FORESTRY



LUONNONVARAKESKUS

