

Joint Research Centre

the European Commission's in-house science service

*Serving society
Stimulating innovation
Supporting legislation*

Developing Smart Specialisation through Targeted Support

Martina Pertoldi
Smart Specialisation Platform/IPTS/JRC

ENRD SEMINAR

*Forging the Links – connecting RDP support to the Food & Drink Supply Chain
Bruxelles, 26 May 2016*

www.ec.europa.eu/jrc



Agenda

1 Smart Specialisation:

targeting R&I towards smart, sustainable and inclusive growth.

2 Smart Specialisation Strategies (RIS3) and agri-food priorities:

How regions/MSs are approaching food related domains?

What are the main issues and challenges?

3 Targeted support from the S3Platform:

- **Territorial focus** (regional development in rural areas)

Hands-on pilot in a specific region.

- **Thematic focus** (Agri-food)

The launch of the new S3 platform on Agri-food.

Smart Specialisation in EU policy

Europe 2020 supports a better relationship between economy and nature (sustainable), society (inclusive) and knowledge (smart).

Research and innovation strategies for smart specialisation (RIS3) are integrated place-based economic transformation agendas aiming at investing more and better in research, innovation and entrepreneurship as part of Europe's response to the present economic crisis, addressing all the Europe2020 objectives.

Smart specialisation was designed with a dual purpose in mind:

- (i) to **reduce duplication** in regional investments in science and technology and
- (ii) to encourage regional players, especially regional governments, to “**particularise** themselves by generating and stimulating the growth of **new** exploration and research activities” (Foray, 2015).

RIS3 is a legal requirement for investing ERDF in R&I (TO1)

What is Smart Specialisation?

the policy concept - S3

- Promote **smart, inclusive and sustainable growth**
 - Investments in R&I as a main factor for economic development
 - Valorise existing assets and local specificities
 - Mobilize local economic players as the main actors of economic change
- Based on **selection of economic activities** with high transformative potential for the economy
- Shift from industrial support to more cross-sectoral supports for **value chain developments**

the process - RIS3

- National or regional **agenda for economic transformation**
- **Coordinate financial and entrepreneurial resources** to support the selected economic activities
- From policy programmes to evolving **policy trajectories** (experimental nature of the policy)
- Define **governance and monitoring mechanisms**

Design Principles for RIS3

- 1. ANALYSIS (READING/INTERPRETATION):** discovery of the socio-economic and innovation engines of regional growth, competitive advantages, weaknesses, challenges
- 2. FUTURE-ORIENTED:** shift from "current economic performance" to "development potential"
- 3. MAKE CHOICES:** identify a limited set of priorities for development where to concentrate investment
- 4. STAKEHOLDERS' INVOLVEMENT:** setting priorities should be an inclusive and interactive process through Entrepreneurial Discovery Process
- 5. BROAD VIEW OF INNOVATION:** support technological as well as practice-based and social innovation
- 6. MONITORING AND EVALUATION:** feeding back information into the policy cycle and allowing strategy revision



RIS3 Guide of the European Commission

Available on the **S3 Platform webpage**
<http://s3platform.jrc.ec.europa.eu>

Main novelties in Smart Specialisation

Not a "neutral" policy

- Smart Specialisation does not act only through horizontal measures that cut across the whole economy
- It requires **policy makers to take the risk** associated with selection of a limited number of activities to support



Choices based on shared entrepreneurial knowledge

- No central and omniscient planner
- Policy makers will rely on and exploit the fundamental knowledge of the local entrepreneurial actors (e.g. firms, higher education institutions, public research institutes, independent innovators)
- Interactive process of knowledge exchange and creation: the ***Entrepreneurial Discovery Process***



The Smart Specialisation Platform

Created in 2011, managed by JRC

Guidance - Analysis - Support

Comprehensive guidance tools:

RIS3 Guide, Digital Agenda Toolbox, FAQs

S3 Publication series:

contributing to conceptual and empirical developments of smart specialisation

Online interactive tools (e.g. Eye@RIS3)

Methodologies: Peer review methodology

Some achievements

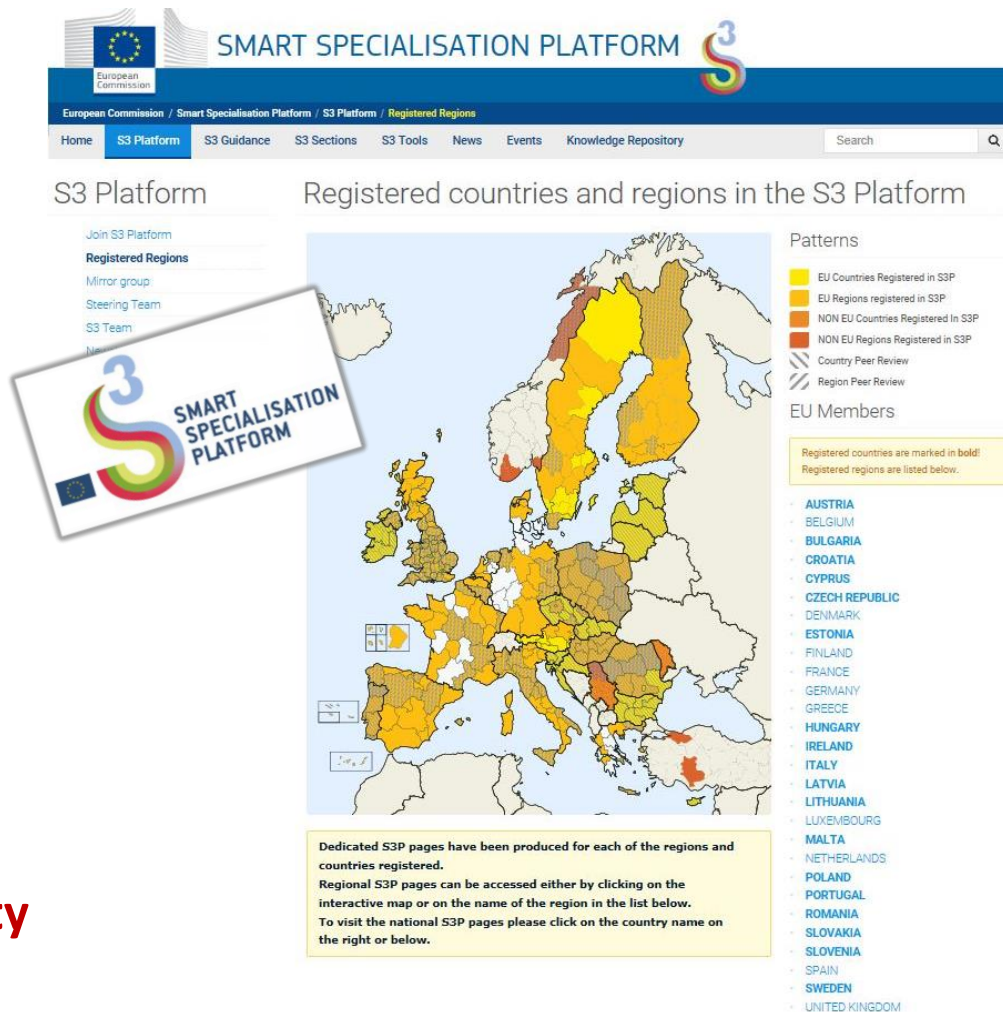
Wide membership: 168 regions, 18 countries

Strong endorsement by policy makers at the regional and EU level

The Smart Specialisation Community

S3 Platform as a unique meeting point and information hub for the S3 community

- Community of language
- Community of practice
- Peer review (more than 70 regions across Europe)



The screenshot displays the 'Registered Regions' page of the Smart Specialisation Platform. It features a map of Europe where regions are color-coded: yellow for EU countries, orange for EU regions, and red for non-EU countries. A legend on the right explains these patterns and lists EU member states. A text box at the bottom provides instructions on how to access regional S3P pages.

European Commission / Smart Specialisation Platform / S3 Platform / Registered Regions

Home S3 Platform S3 Guidance S3 Sections S3 Tools News Events Knowledge Repository Search

S3 Platform Registered countries and regions in the S3 Platform

Join S3 Platform
Registered Regions
Mirror group
Steering Team
S3 Team

Patterns

- EU Countries Registered in S3P
- EU Regions registered in S3P
- NON EU Countries Registered in S3P
- NON EU Regions Registered in S3P
- Country Peer Review
- Region Peer Review

EU Members

Registered countries are marked in bold.
Registered regions are listed below.

- AUSTRIA
- BELGIUM
- BULGARIA**
- CROATIA
- CYPRUS
- CZECH REPUBLIC
- DENMARK
- ESTONIA**
- FINLAND
- FRANCE
- GERMANY
- GREECE
- HUNGARY
- IRELAND
- ITALY
- LATVIA
- LITHUANIA
- LUXEMBOURG
- MALTA
- NETHERLANDS
- POLAND
- PORTUGAL
- ROMANIA
- SLOVAKIA
- SLOVENIA
- SPAIN
- SWEDEN
- UNITED KINGDOM

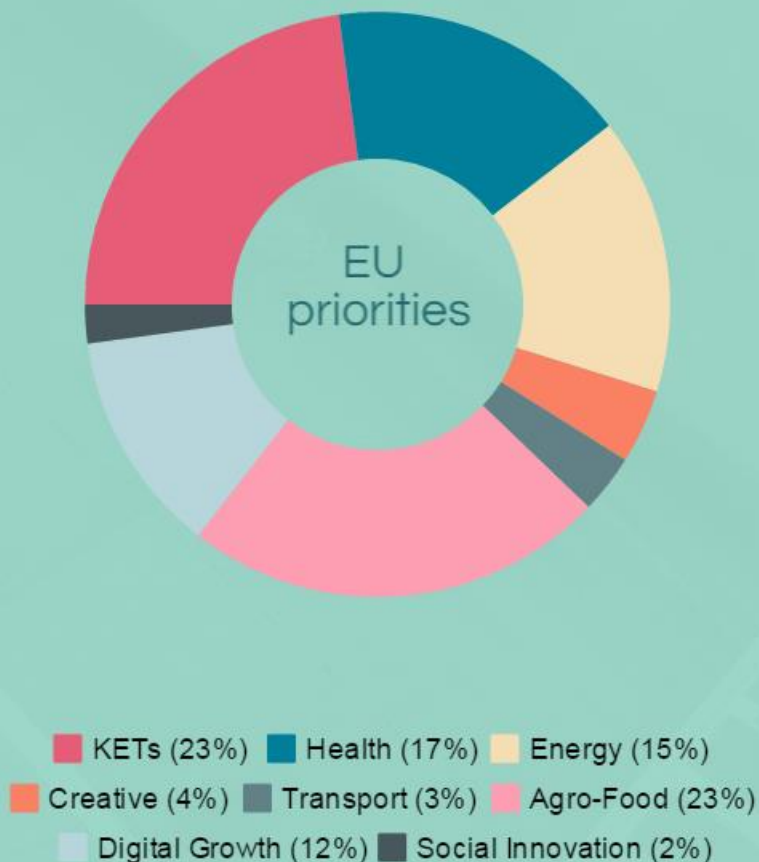
Dedicated S3P pages have been produced for each of the regions and countries registered.
Regional S3P pages can be accessed either by clicking on the interactive map or on the name of the region in the list below.
To visit the national S3P pages please click on the country name on the right or below.

RIS3s and agri-food priorities

1,260+

The number of priorities encoded in the Eye@RIS3 database

Main RIS3 categories (2015)



Many RIS3 priorities are linked to several such categories

Source: **Eye@RIS3** (online S3P tool)

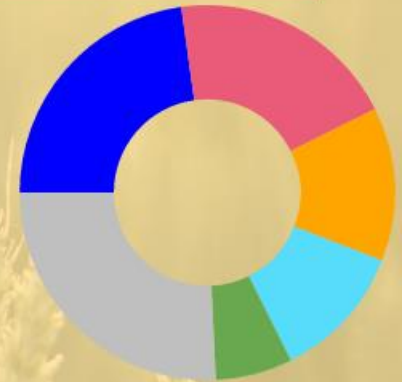
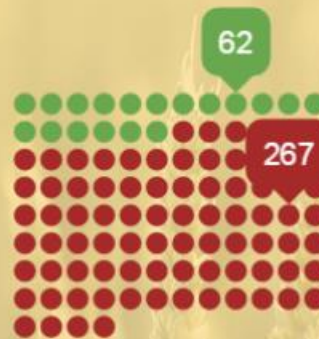
RIS3s and agri-food priorities

Agro-Food and related priorities

Top Category
2015

270+

The number of encoded Agro-Food priorities

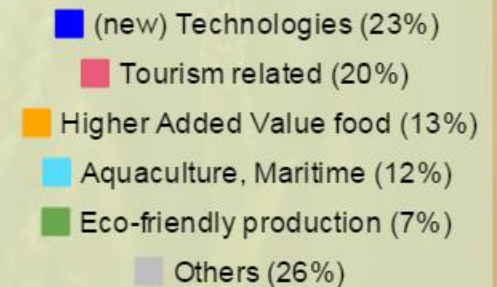


3 in 4

regions selected an Agro-Food related priority

1 in 5

Agro-Food priorities focus on new technologies

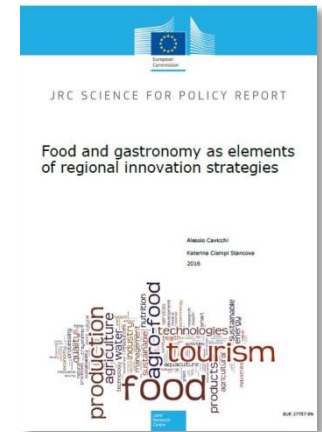


Source: Eye@RIS3 (online S3P tool)

RIS3 and Agri-food: common issues

Main criticalities:

- Collaboration between industry and academia;
- Incentives for SMEs to invest in R&D;
- Funding mix;
- Investment priorities;
- Local branding strategies;
- Public support to innovation processes;
- Added value of food products
 - need to move from commodity/ingredients to added value consumer products;
 - debate about mainstream (meat, milk) versus niche areas (artisan, organic);
- KETs in agro-food;
- **Collaboration among stakeholders in agri-food GVCs.**

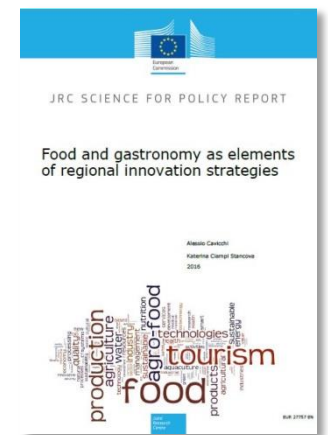
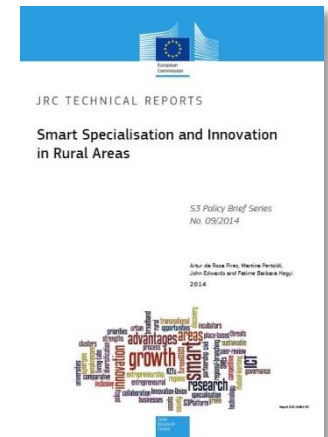


Source: Cavicchi, A. and Ciampi Stancova K. (2016). Food and gastronomy as elements of regional innovation strategies. European Commission, Joint Research Centre, Institute for Prospective Technological Studies

RIS3 and Agri-food: policy challenges

Main policy challenges (1/3):

- **Identifying niche activities able to produce a structural change**
 - Assessing local development potential.
 - Mapping existing and potential dynamics of change.
 - Mapping the links between agricultural activities and the wider rural economy.
- **Entrepreneurial discovery process**
 - Who are relevant stakeholders and agents of change?
What is the added value of this specialisation? Is it a cross-sectoral activity or a niche activity?
 - Mapping capabilities/expertise in the region and outside the region.
 - Need to involve different professional communities.



RIS3 and Agri-food: policy challenges

Main policy challenges (2/3):

- **Policy delivery (resources and initiatives)**
 - Bring together the relevant local actors and jointly explore possible collaboration in the prioritised niches of growth.
 - Network local stakeholders with external scientific and entrepreneurial knowledge on the basis of local needs and resources.
 - Identify complementary investments associated with the priority.
 - Project calls and selection criteria: individual projects (a chance to be) vs the resulting pattern of change.
- **Establishment of collaborative practices** with other communities engaged in RIS3.
 - Trans-regional and international collaborations. No easy identification of common ground. Very different understandings of sub-areas.

RIS3 and Agri-food: policy challenges

Main policy challenges (3/3):

- **Institutional capacity**
 - adequate technical skills inside the body responsible for RIS3 design and implementation (from policy programme to policy trajectories).
 - Learn from past R&I policies in food, gastronomy, bio-economy, food tourism, etc. and take stock of their impact and induced dynamics.
- **Multilevel cooperation and synergies among policy areas**
 - Search for strategic alignments between local, regional, national and supra-national policy agendas.
 - Search for synergies with other EU programmes and initiatives (and related funding opportunities).

Source: Rosa Pires A., Pertoldi M., Edwards J. and Hegyi F. (2014). Smart Specialisation and Innovation in Rural Areas. JCR Technical Reports. S3 Policy Briefs 09/2014.
Cavicchi, A. and Ciampi Stancova K. (2016). Food and gastronomy as elements of regional innovation strategies. European Commission, Joint Research Centre, Institute for Prospective Technological Studies

Targeted support from the S3Platform:

Territorial focus: REMTH project

- pilot hands-on approach experience
- tested in Eastern Macedonia and Thrace (Greece)
- in the period September 2014 - November 2015

3 main objectives:

1. Stocktaking and assessment of the development of the RIS3 strategy;
 2. **Support to the EDP process;**
 3. **Capacity building.**
- to be soon replicated in 9 regions (Romania, Poland, Hungary , Bulgaria , Portugal, Spain , Italy , Greece)

Targeted support from the S3Platform:

Territorial focus: REMTH project

- **Entrepreneurial Discovery Process Focus Groups**
 - participation of stakeholders from the Triple and Quadruple Helix in the priority sectors of the RIS3 (as agrifood);
 - aimed at identifying potential avenues for innovation activities;
 - engagement of stakeholders in international networks;
 - focus on **Wine, Dairy and Meat products, Tourism and Marble.**
- **Project Development Labs**
 - **Wine** (14 ideas), **Dairy and Meat** (13 ideas), **Tourism** (10 ideas) and **Marble** (6 ideas)
 - **8 case studies** on ideas explored further during the PDL workshops
- **RDI funding guide**

provides summary information on the national and regional sources of funding that can support the implementation of the RIS3 in Eastern Macedonia and Thrace.

Targeted support from the S3Platform:

Thematic focus: new S3 platform on Agri-food

Objectives:

- **Support** the development and enhancement of **European interregional collaboration** based on areas of **Smart Specialisation**.
- **Facilitate** the exchange of experience, **mutual learning and cooperation** to **achieve better matching of business entities with research**, as well as innovation actors with their business counterparts.
- **Prepare** guidance material on **the role of regional authorities in co-creating and developing European value chains** in key Smart Specialisation niches also through tailored guidance for **access to finance for investment projects** that result from the platform (ESIF, Horizon 2020, etc.)
- Better **align and integrate the EU framework for innovation and investment policies to regional development**, using a **value chain approach**.

Targeted support from the S3Platform:

Thematic focus: new S3 platform on Agri-food

Role of the EU Commission_S3Platform <DG REGIO< DG AGRI< DG RTD

1. Initiate the platform, facilitate an annual event and provide **methodological support** to structure the subsequent process (mapping and other intelligence methods/tools)
2. Facilitate **access to finance for investment projects** that result from the platform (ESIF, Horizon 2020, etc.)
3. Better **align and integrate its EU framework for innovation and investment policies to regional development**, using a **value chain approach**.

Main actors are regions and MSs!

Launch of the Agri-food platform: **1-2 June 2016** in Brussels

Thank you!

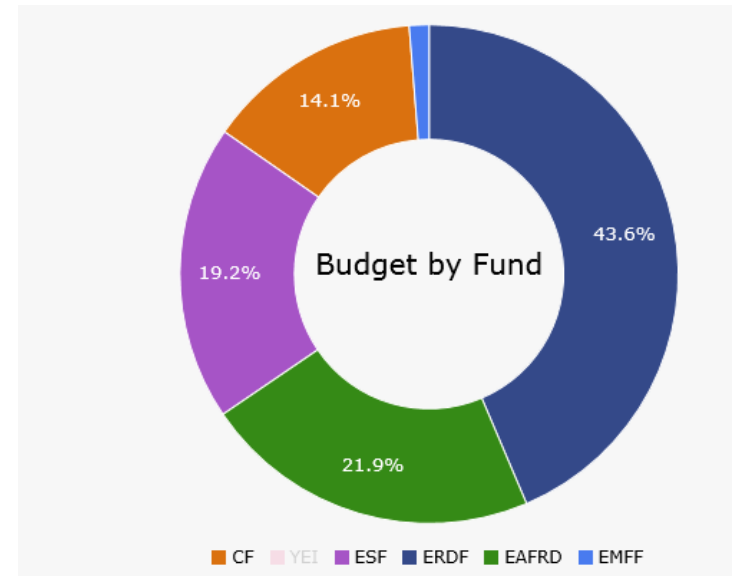
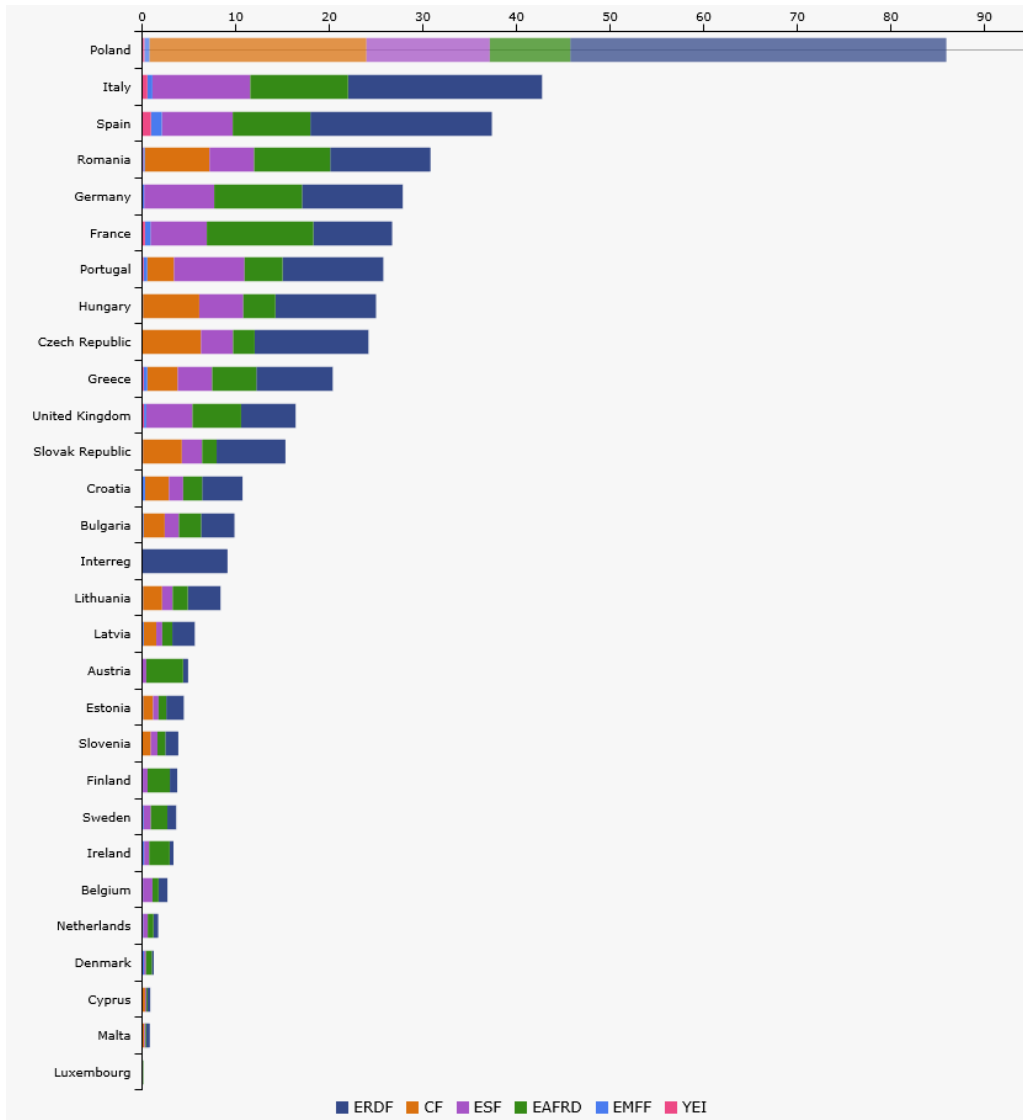
Smart Specialisation - S3 Platform
<http://s3platform.jrc.ec.europa.eu>

martina.pertoldi@ec.europa.eu



Appendix 1. EU ESIF budget

Source: Cohesion Data web portal



TO1 Research & Innovation

