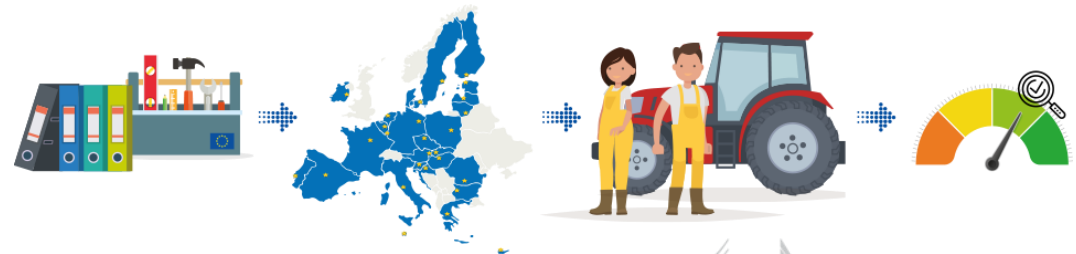




Overview of the CAP Strategic Plan

ENRD seminar 'Key Steps for CAP Strategic Planning'

23 OCTOBER 2018



This presentation is only intended to facilitate the work of ENRD seminar. It has no interpretative value as regards the draft Regulation for the CAP post-2020.

A SIMPLER EU FRAMEWORK

01



PLANNING

Streamlined
CAP plan

02



**POLICY
IMPLEMENTATION**

Potential for simpler
requirements

03



ASSURANCE

General rules on
controls, audit and
penalties

04



**PERFORMANCE
evaluation**

Streamlined
reporting
fewer indicators



More **flexibility**, **fewer** rules ...



A STREAMLINED CAP PLAN

Three different administrative processes **will be integrated into a single one.**

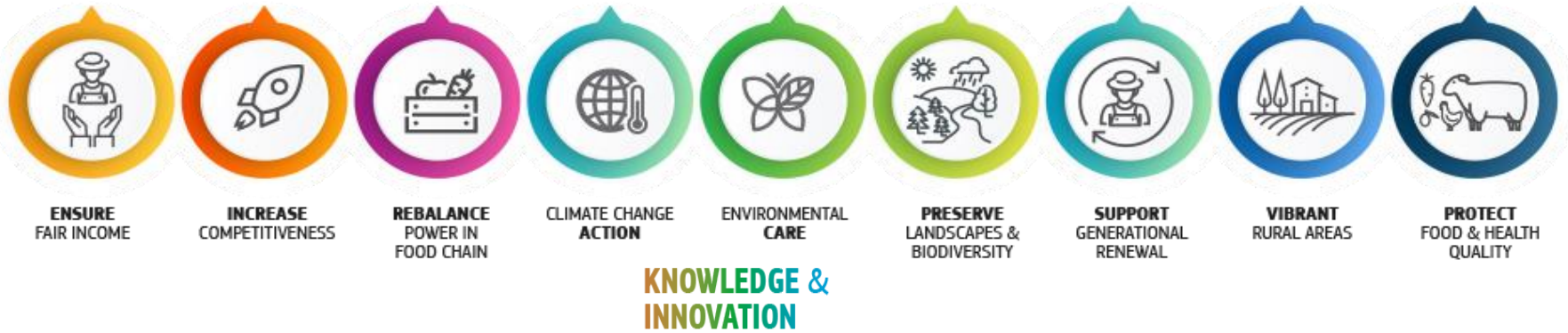
- Single strategic approach based on a needs assessment
- Ensuring level-playing field and legal certainty

26 Direct Payments notifications per MS
118 rural development programmes
65 sectorial strategies



27 CAP plans
At the level of MS

THE 9 CAP OBJECTIVES and main policy principles



SIMPLIFICATION



Reduce
administrative
burden

PERFORMANCE BASED SYSTEM



Ensure
policy results

BETTER TARGETING



Rules with better
**links to local
realities**

KEEP STRONG COMMON ELEMENTS



Keep a level
playing field

Enhanced ambition

The 9 Specific Objectives

Entry point for the Strategic Planning

Types of interventions

Support viable farm income and resilience across the Union to enhance food security

Enhance market orientation and increase competitiveness, including greater focus on research, technology and digitalisation

Improve the farmers' position in the value chain

Contribute to climate change mitigation and adaptation, as well as sustainable energy

Foster sustainable development and efficient management of natural resources such as water, soil and air

Contribute to the protection of biodiversity, enhance ecosystem services and preserve habitats and landscapes

Attract young farmers and facilitate business development in rural areas

Promote employment, growth, social inclusion and local development in rural areas, including bio-economy and sustainable forestry

Improve the response of EU agriculture to societal demands on food and health, including safe, nutritious and sustainable food, food waste, as well as animal welfare

CAP
Strategic
Plan

BISS

CRISS

CIS-YF

Eco-schemes

Coupled support

Sectorial types of interventions

Management commitments

Natural constraints

Area-specific disadvantages

Investments

Installation of YF and start-up

RM tools

Cooperation

Knowledge exchange and information



European
Commission



Content of the CAP Strategic Plan

- An assessment of the needs
- An intervention strategy
- A description of the interventions
 - *Common elements*
 - *Each intervention (direct payments, sectoral and rural development)*
- Target and financial plans
- A description of the governance and coordination system
- A description of the elements that ensure modernisation and simplification of the CAP



ASSESSMENT OF NEEDS AND INTERVENTION STRATEGY

- Summary of the SWOT analysis
- Identification, prioritisation and ranking of needs
- Selection of the interventions, following a sound intervention logic
- Targets for result indicators and related milestones
- Allocation and justification of financial resources



ELEMENTS COMMON TO SEVERAL INTERVENTIONS

- Definitions and minimum requirements
- Conditionality
- Elements related to direct payments
 - ❖ Value of payment entitlements and functioning of the reserve
 - ❖ Reduction of direct payments
- Technical Assistance, CAP Network, Coordination





DESCRIPTION OF THE INTERVENTIONS

- Description of the design/requirements of the intervention
- Relevant baseline elements (e.g. relevant GAEC or statutory management requirements (SMR)), where applicable, and explanation as to how the commitment goes beyond the mandatory requirements





GOVERNANCE SYSTEMS AND COORDINATION SYSTEMS

- Identification of governance and coordination bodies
 - ❖ Competent Authority, Managing Authority, Paying agencies, Coordinating Body, Certification Body, Monitoring Committee, other delegated and intermediate bodies
 - ❖ Competent bodies responsible for conditionality
 - ❖ AKIS coordination bodies, including farm advice
- Description of the monitoring and reporting structure
- Information on the management, area monitoring and control systems, including penalties
 - ❖ IACS
 - ❖ Non-IACS
 - ❖ Conditionality



MODERNISATION AND SIMPLIFICATION

- **Modernisation:**
 - ❖ Identification of the needs, based on the SWOT analysis, in relation to the cross-cutting objective related to fostering and sharing of knowledge innovation and digitalisation, including information about the functioning of the AKIS and related structures
 - ❖ Overall organisational set-up of the AKIS
 - ❖ Description of the farm advisory services provided
 - ❖ Description of how advisory services, research and CAP networks will work together within AKIS, and how advice and innovation support services are provided
 - ❖ Digitalisation strategy and for the use of technology and data-driven solutions
- **Simplification** and reduction of administrative burden for final beneficiaries



Annexes of the CAP Strategic Plan

1. Ex-ante evaluation + Strategic Environmental Assessment (SEA)

- Summary of the main results
- How have been addresses/why have not been taken into account
- Link to the complete reports

2. SWOT analysis

3. Consultation of the partners (outcome + brief description of how it was carried out)

4. Crop-specific payment for cotton (and its complementarity with other interventions)

5. Additional national financing provided within the scope of the CAP Strategic Plan

- Short description, including the amounts per measure and indication of the compliance with the requirements
- Complementarity with the CAP Plan interventions
- Indication of whether falls outside of Art. 42 TFEU and subject to State aid assessment

